

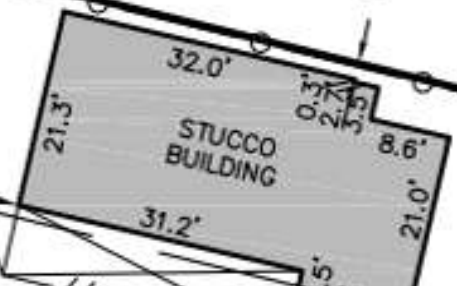
4400 6TH STREET N.W.
(60' R/W)

BACK OF CURB

FENCES APPEAR TO
EXTEND INTO R/W
BY AS MUCH AS ±15.6'

74.10'

142.00'



LOT 14
28.9'

LOT 13

LOT 13
LOT 12

STUCCO SHED ON
CONCRETE FOUNDATION

74.10'
16' ALLEY



142.00'

DIRT DITCH

