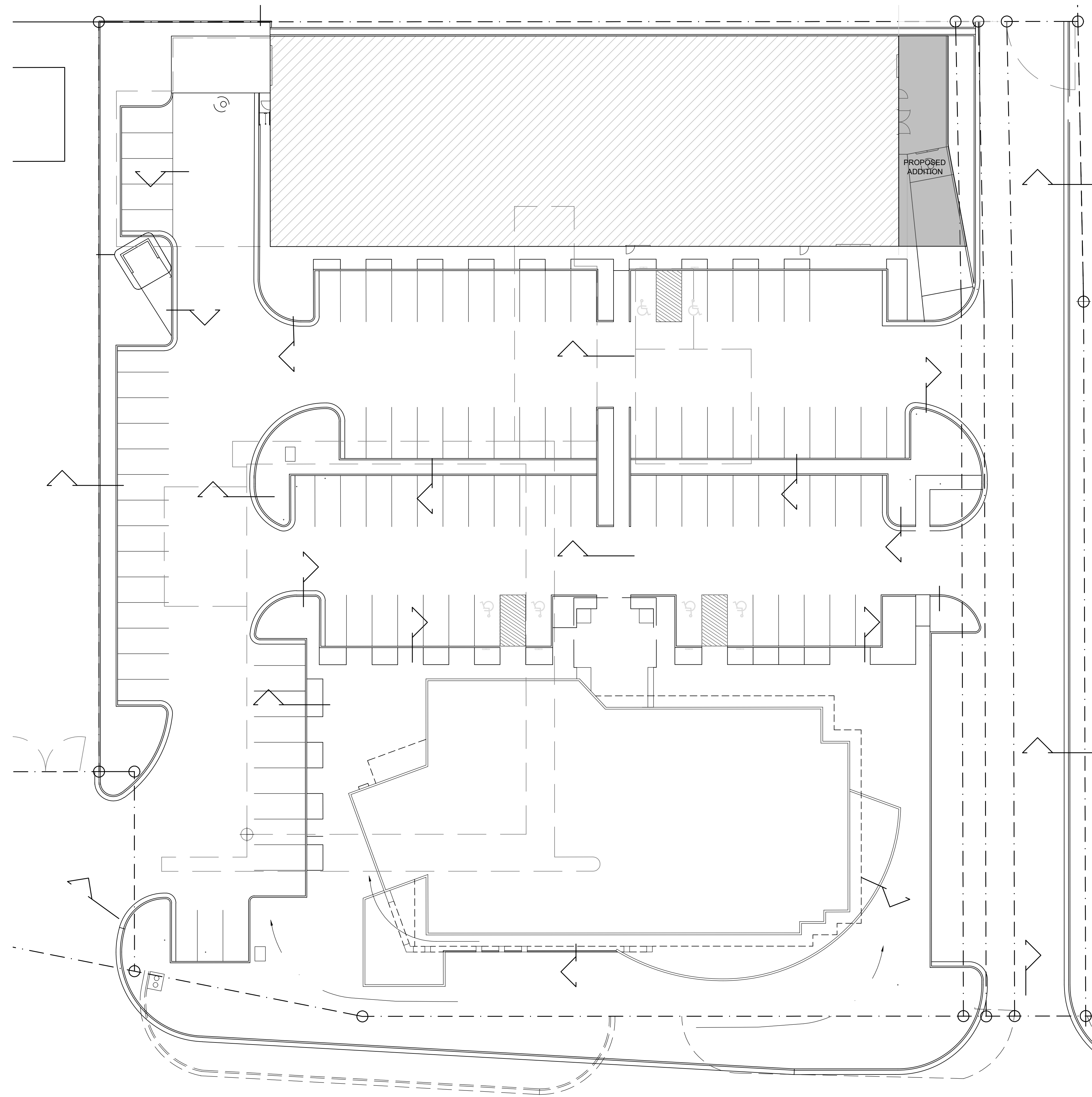


ADMINISTRATIVE AMENDMENT

FILE # _____ PROJECT # _____

APPROVED BY

DATE

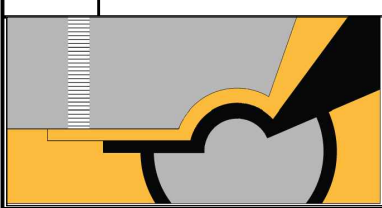
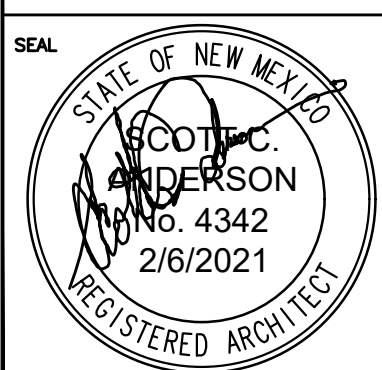


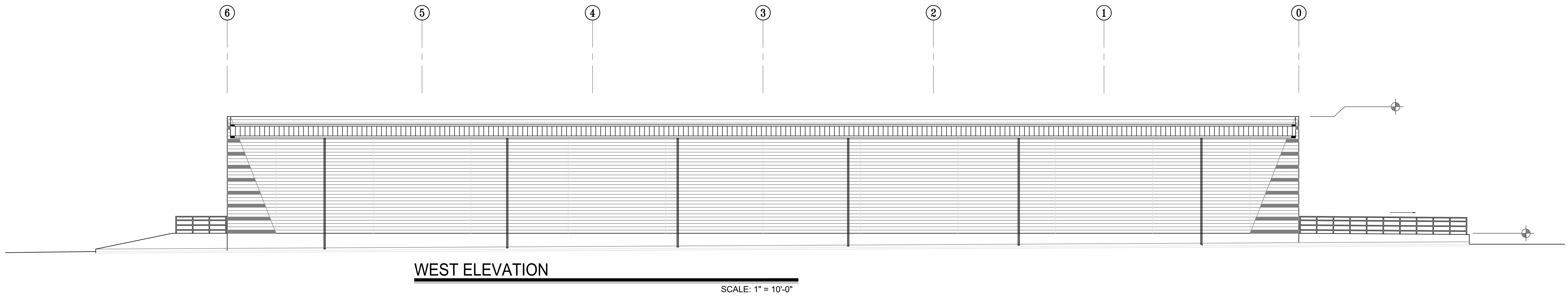
SITE PLAN

PAN AMERICAN FREEWAY FRONTAGE ROAD NW

SCALE: 1" = 10'-0"

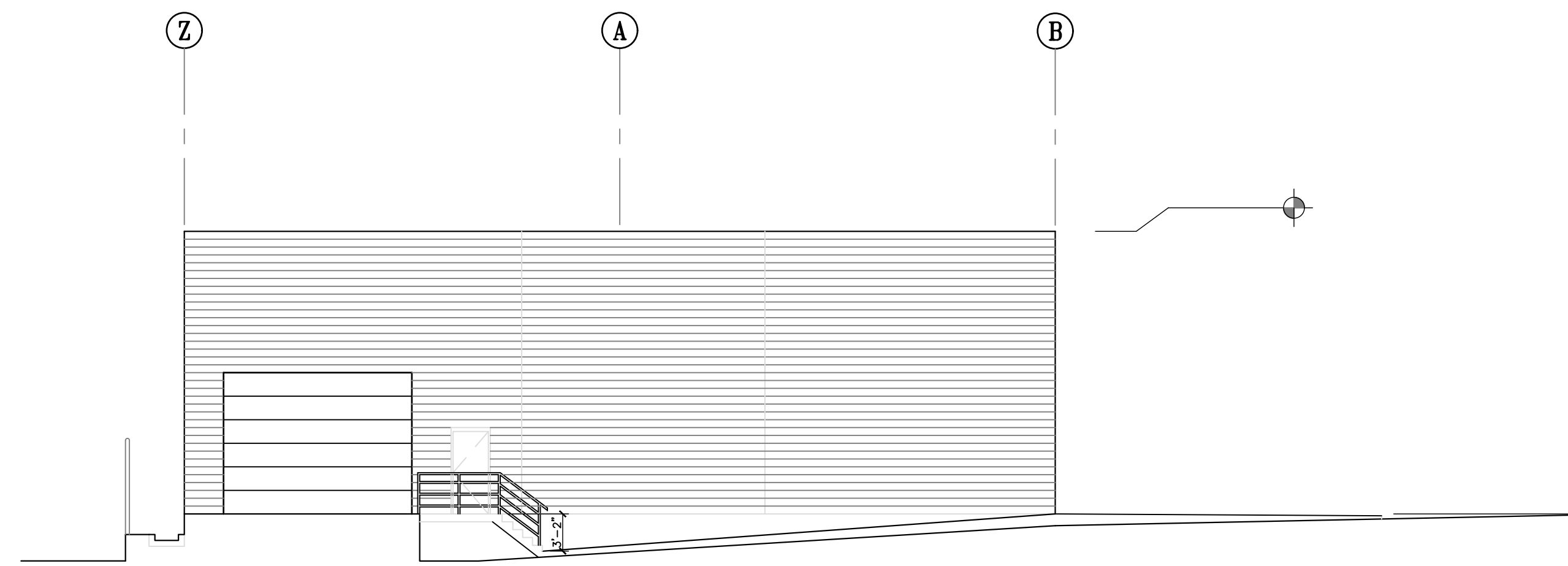
No	Revision Item	Date

 SCOTT C. ANDERSON & associates architects <small>1604 2nd Avenida NE Albuquerque, NM 87120 scott@scottcanderson.com 505.401.7575</small>	LOADING DOCK ENCLOSURE 7447 PAN AMERICAN FWY NE ALBUQUERQUE, NM 87109	
	DRAWING TITLE <p align="center">SITE PLAN</p>	
	DESIGNED	PROJECT NO
	DRAWN	SCALE
	CHECKED	DRAWING NO
	REVIEWED	A-100
	DATE	



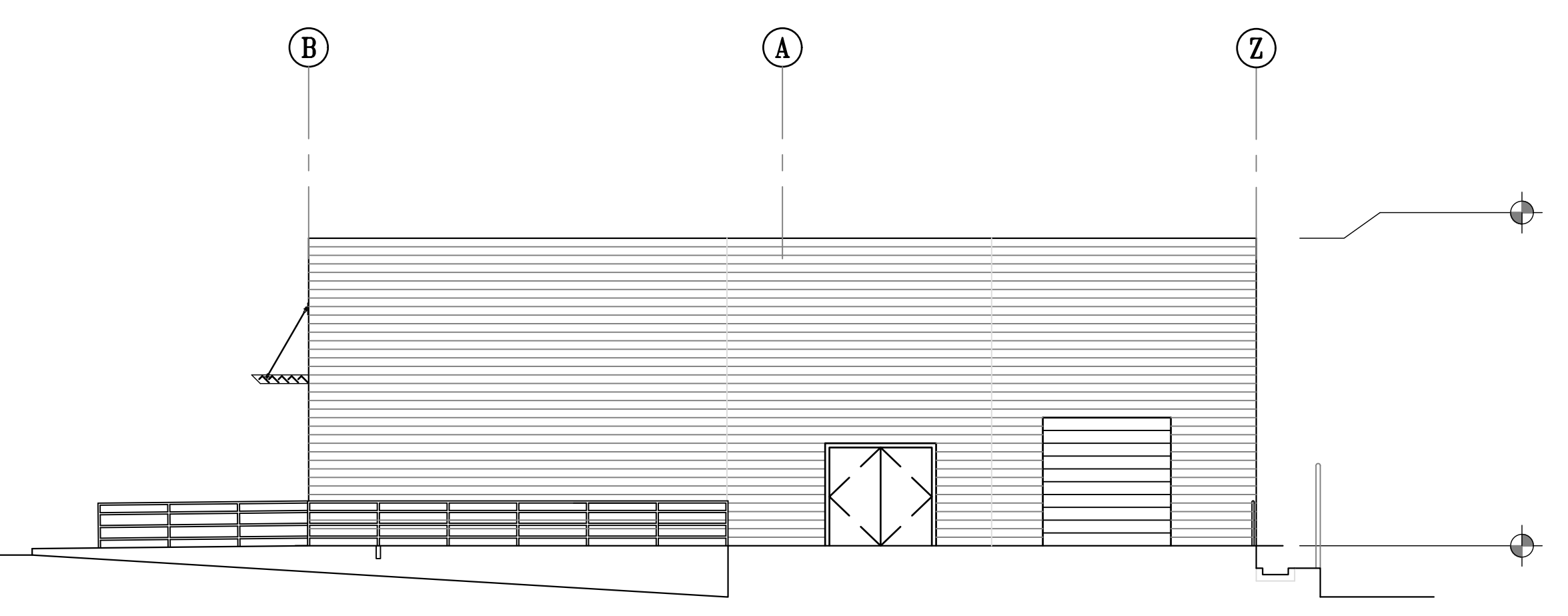
WEST ELEVATION

SCALE: 1" = 10'-0"



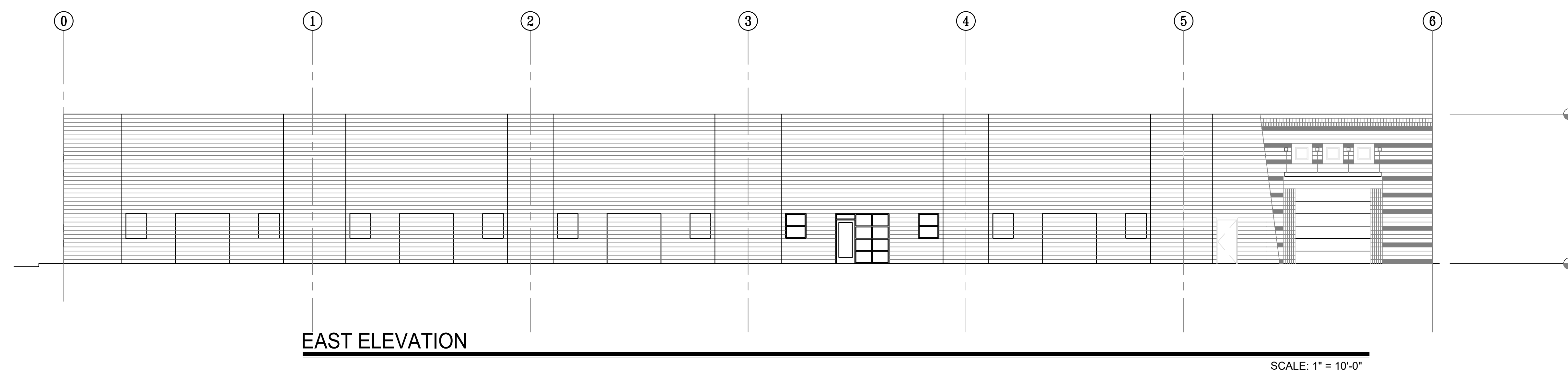
SOUTH ELEVATION

SCALE: 1" = 10'-0"



NORTH ELEVATION

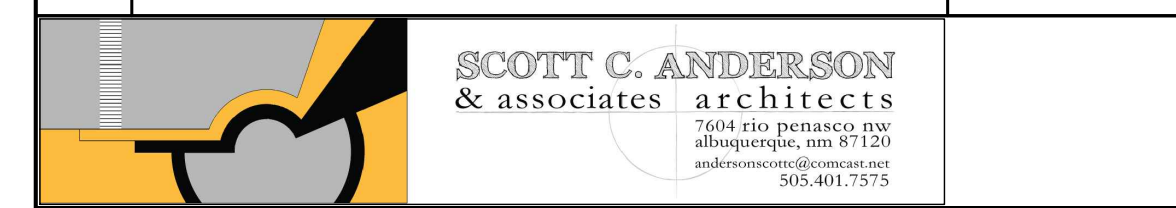
SCALE: 1" = 10'-0"



EAST ELEVATION

SCALE: 1" = 10'-0"

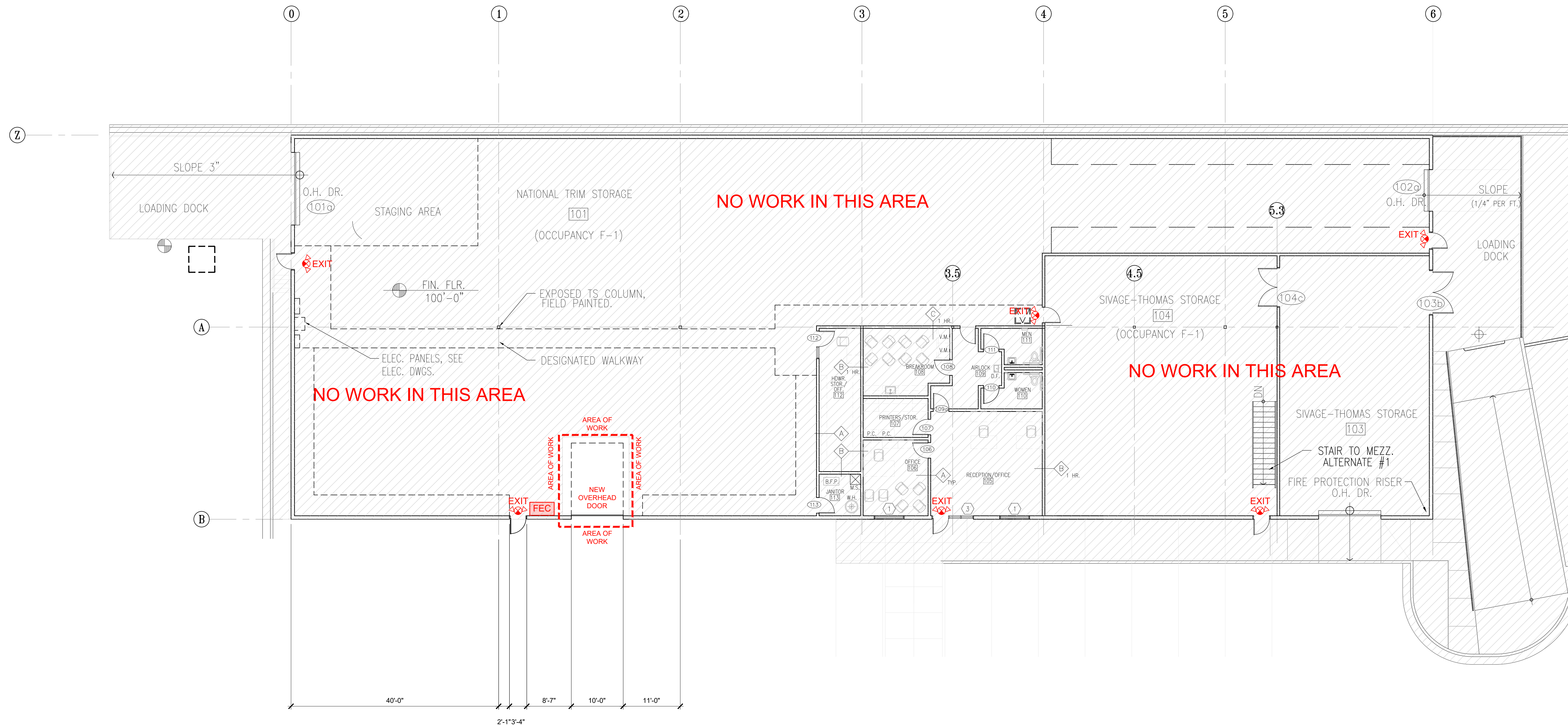
No	Revision Item	Date



LOADING DOCK ENCLOSURE
7447 PAN AMERICAN FWY NE
ALBUQUERQUE, NM 87109

DRAWING TITLE
EXISTING BUILDING ELEVATIONS

	DESIGNED	PROJECT NO
	DRAWN	SCALE
	CHECKED	DRAWING NO
	REVIEWED	A-201
DATE	9/2/2020	OF



CODE ANALYSIS / FIRE 2 PLAN

SCALE: 1" = 10'-0"



CODE ANALYSIS
 IBC 2015
 OCCUPANCY CLASSIFICATION STORAGE GROUP F-1
 SCOPE OF WORK: ADD NEW OVERHEAD DOOR ALTERATION LEVEL 2

BUILDING TYPE:
 IBC TABLE 601 & SECTION 602.2
 CONSTRUCTION TYPE TYPE II-B-S1

FIRE-RESISTIVE REQUIREMENTS PER IBC TABLE 601

STRUCTURAL FRAME	0 HR
BEARING WALLS	0 HR
NON-BEARING WALLS	0 HR
ROOF CONSTRUCTION	0 HR

ALLOWABLE GROSS FLOOR AREA:
 IBC TABLE 506.2

F-1 OCC. / TYPE II-B-S1 CONST	
2 FLOORS / 55 FT	62,000 SQ. FT.

ACTUAL FLOOR AREA:
 TOTAL BUILDING AREA 16,250 SQ. FT.

CODE ANALYSIS

AREA SEPARATION:
 IBC TABLE 508.4
 NONE REQUIRED

OCCUPANT LOAD:
 IBC TABLE 1004.1.1
 UNCHANGED

AUTOMATIC SPRINKLER SYSTEM:
 PROVIDED

FIRE ALARM & DETECTION SYSTEM: IBC 907.2.2
 PROVIDED

GROUP F-1 PLUMBING:
 IBC 2902.1
 NO CHANGE TO OCCUPANCY OR OCCUPANT LOAD
 EXISTING FIXTURE COUNT TO REMAIN PER IBC

CODE LEGEND

- 3 HOUR FIRE RATED ASSEMBLY
 - 2 HOUR FIRE RATED ASSEMBLY
 - 1 HOUR FIRE RATED ASSEMBLY
 - SMOKE BARRIER 1 HOUR RATED
 - DIRECTION OF EGRESS
 - DIRECTION OF EGRESS WITH NUMBER OF OCCUPANTS INDICATED
 - FIRE EXTINGUISHER CABINET
 - FIRE DEPARTMENT HOSE CONNECTION
- FIRE EXTINGUISHER IN AREAS OTHER THAN THE KITCHEN ARE TO BE 2A-10BC SURFACE MOUNTED TYPE ABC. FIRE EXTINGUISHER IN THE KITCHEN TO BE TYPE K.

NOTE:

- SHOP DRAWINGS SHALL BE SUBMITTED TO THE FIRE MARSHAL'S OFFICE FOR REVIEW AND APPROVAL FOR ANY INSTALLATION OR MODIFICATION TO THE FIRE SPRINKLER SYSTEM, FIRE ALARM SYSTEM, OR ANY OTHER FIRE RELATED SYSTEM.
- THE FIRE SPRINKLER SYSTEM SHALL BE SUPERVISED.

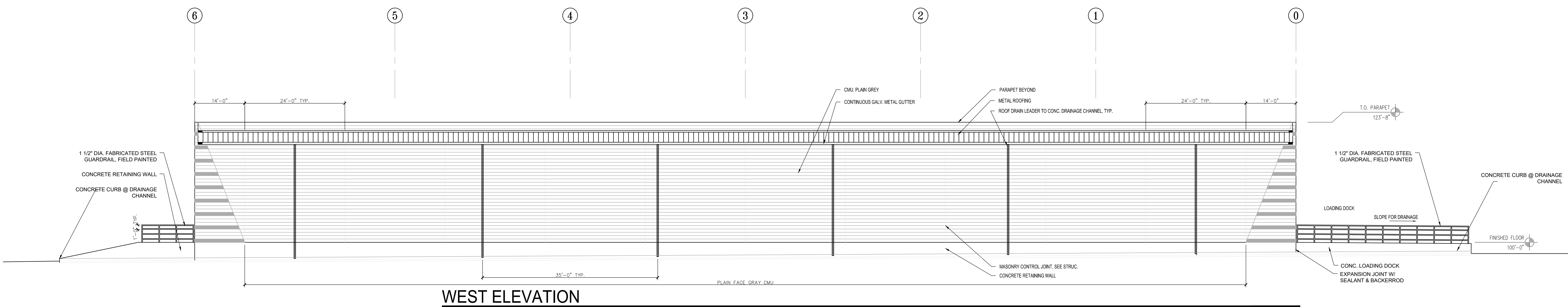
No	Revision	Item	Date

SCOTT C. ANDERSON
 & ASSOCIATES ARCHITECTS

WAREHOUSE DOOR ADDITION
 7447 PAN AMERICAN FWY NE
 ALBUQUERQUE, NM 87109

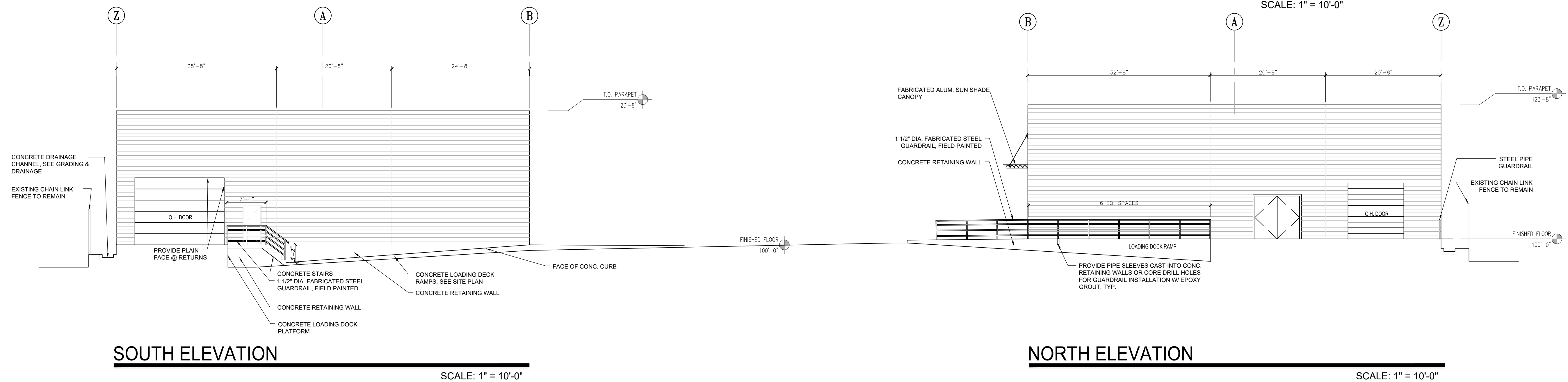
DRAWING TITLE **CODE ANALYSIS PLAN**
FIRE 2 PLAN

DESIGNED	PROJECT NO
DRAWN	SCALE
CHECKED	DRAWING NO
REVIEWED	G-101
DATE 8/14/2020	OF



WEST ELEVATION

SCALE: 1" = 10'-0"

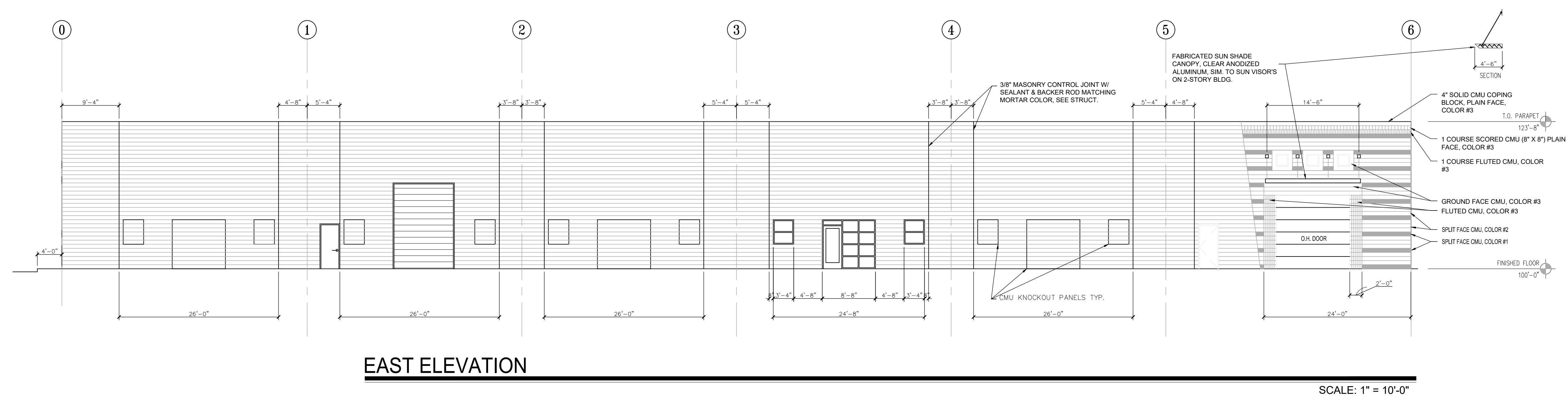


SOUTH ELEVATION

SCALE: 1" = 10'-0"

NORTH ELEVATION

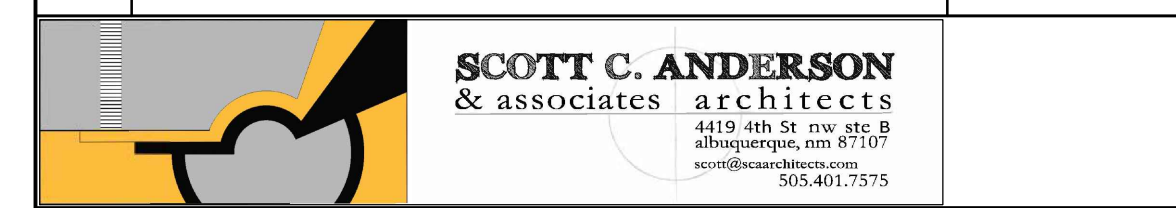
SCALE: 1" = 10'-0"



EAST ELEVATION

SCALE: 1" = 10'-0"

No	Revision	Item	Date



WAREHOUSE DOOR ADDITION
 7447 PAN AMERICAN FWY NE
 ALBUQUERQUE, NM 87109

DRAWING TITLE
NEW BUILDING ELEVATIONS

	DESIGNED	PROJECT NO
	DRAWN	SCALE
	CHECKED	DRAWING NO
	REVIEWED	A-202
DATE	9/2/2020	OF