

**ADMINISTRATIVE AMENDMENT**

**FILE # \_\_\_\_\_ PROJECT # \_\_\_\_\_**

\_\_\_\_\_

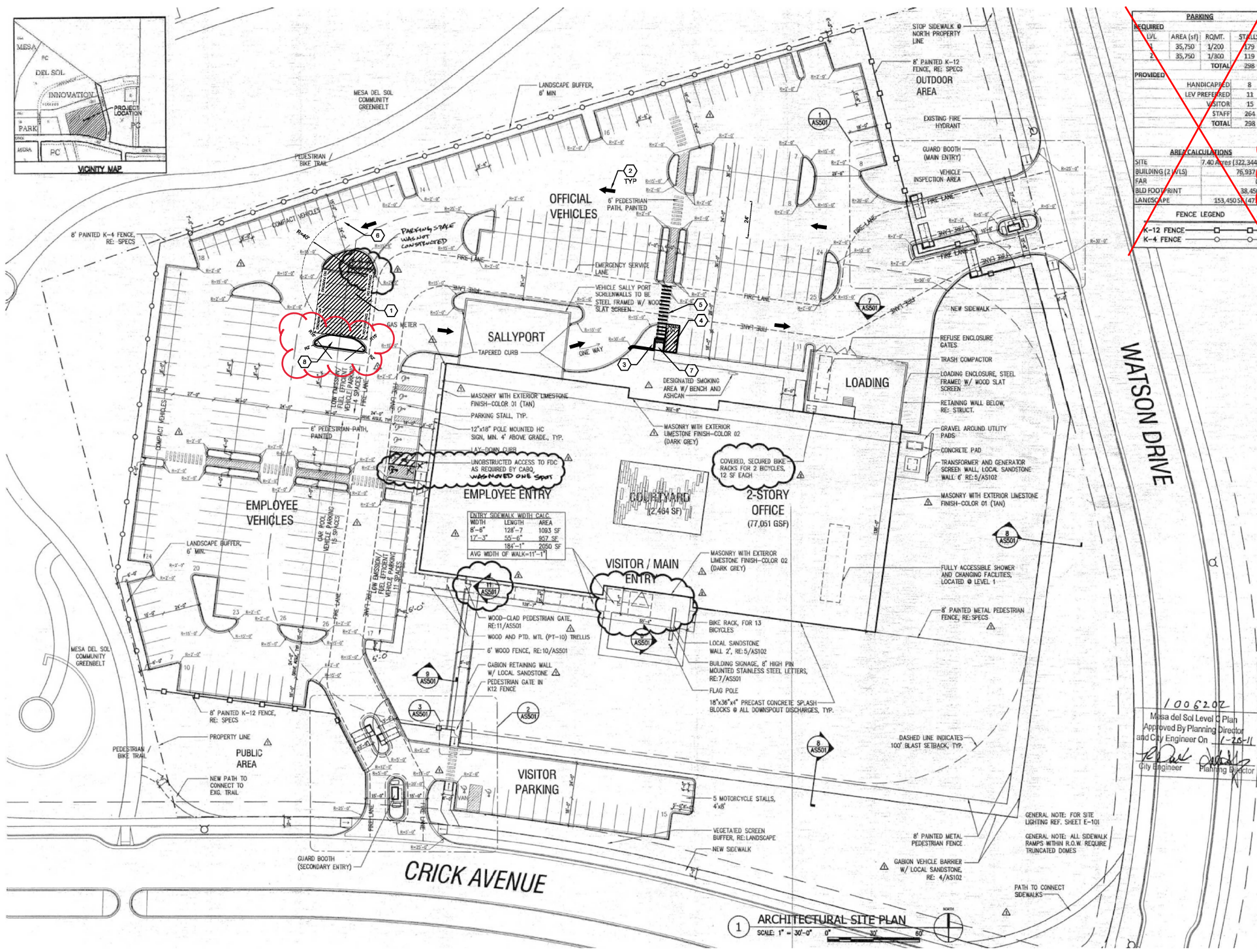
\_\_\_\_\_

\_\_\_\_\_

**APPROVED BY**

**DATE**





| REQUIRED PARKING |           |        |        |
|------------------|-----------|--------|--------|
| TYPE             | AREA (SF) | COMPT. | STALLS |
| 1                | 35,750    | 1/200  | 179    |
| 2                | 35,750    | 1/300  | 119    |
|                  | TOTAL     |        | 298    |

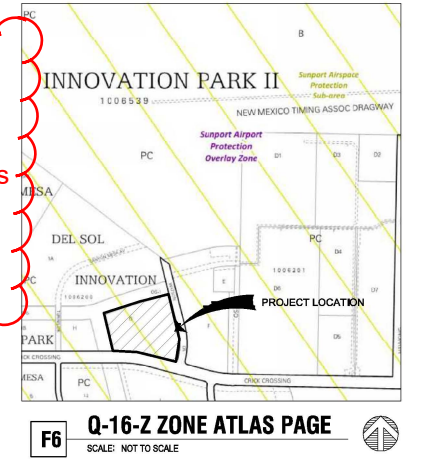
  

| PROVIDED    |           |        |        |
|-------------|-----------|--------|--------|
| TYPE        | AREA (SF) | COMPT. | STALLS |
| HANDICAPPED |           |        | 8      |
| VISITOR     |           |        | 11     |
| STAFF       |           |        | 264    |
| TOTAL       |           |        | 298    |

| AREA CALCULATIONS |            |              |  |
|-------------------|------------|--------------|--|
| SITE              | 7.40 Acres | (322,344 SF) |  |
| BUILDING (2 FLS)  |            | 76,937 SF    |  |
| FAR               |            | 38,450 SF    |  |
| LANDSCAPE         |            | 153,457 SF   |  |

\*Refer to Updated Parking Tabulations Below -JMA 10/1/2020



- TCL KEYED NOTES**
- REMOVE END ISLAND, AND PARKING STALL STRIPING. PROVIDE INFILL PAVING AND STRIPING TO INDICATED NO PARKING AS SHOWN.
  - ARROWS TO INDICATED BUS ROUTE FROM PUBLIC ROAD TO SALLYPORT. ARROWS ARE NOT PROPOSED TO BE APPLIED TO PAVEMENT, SIMPLY FOR INDICATION OF PURPOSE FOR PARKING LOT MODIFICATIONS.
  - REMOVE CURBING, AND PROVIDE INFILL ASPHALT PAVEMENT, CURB AND GUTTER AND CURB ACCESS RAMP WITH DETECTABLE WARNING SURFACE PER DETAIL A4 THIS SHEET.
  - STRIPED PARKING STALL TO INDICATE NO PARKING.
  - REFRESH AND EXTEND EXISTING CROSSWALK, 6' WIDE CONTINENTAL STRIPING.
  - RADIUS SHOWN TO ENSURE BUS WILL HAVE ROOM FOR TURNING MOVEMENT. NO STRIPING IS PROPOSED TO BE APPLIED TO PAVEMENT TO INDICATED RADIUS.
  - NEW CONCRETE CURB ACCESS RAMP WITH DETECTABLE WARNING SURFACE PER DETAILS AS THIS SHEET.
  - NEW CONCRETE CURB AND GUTTER PER DETAIL A5 THIS SHEET TO CREATE END ISLAND. PROVIDE IRRIGATION, AND LANDSCAPING PER IDO REQUIREMENTS.
- TCL GENERAL NOTES**
- SITE PLAN USED FOR TCL UPDATED WAS FROM GRADING AND DRAINAGE SUBMITTAL FROM 2011.
  - MODIFICATIONS ARE LIMITED TO THE AREAS IDENTIFIED.
  - ALL PROPOSED MODIFICATION ARE WITHIN THE SECURE PARKING AREA, THERE IS NO ACCESS FOR THE PUBLIC.

This Administrative Amendment action does not meet the applicability criteria of IDO 5-6(B), therefore no landscaping is required on the proposed end island. JMA 11/20/2020

**TABULATED PARKING:**

PER TABLE 5-5.1 OFF-STREET PARKING REQUIREMENTS FOR OFFICE SPACE  
 3.5 PARKING SPACES PER 1,000 GSF  
 BUILDING IS 38,450 SF PER FLOOR (2 STORES) = 76,900 GSF

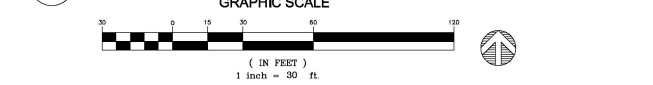
EXISTING CONDITIONS  
 PARKING COMPUTED UNDER CITY OF ALBUQUERQUE PLANNING REQUIREMENTS (PRIOR TO IDO)  
 297 SPACES (INCLUDING ADA)  
 MOTORCYCLE PARKING=5

PROPOSED CONDITIONS  
 77,900 X 3.5 = 273 SPACES REQUIRED (284 PROVIDED)  
 MOTORCYCLE PARKING=5 (Table 5-5-4)

ADA PARKING STALLS PER IDO (NM COMMERCIAL BUILDING CODE 2015) CHAPTER 11, ACCESSIBILITY (TABLE 1106.1)  
 FOR BETWEEN 100 AND 300 SPACES 8 ADA STALLS ARE REQUIRED INCLUDING 2 VAN ACCESSIBLE STALL  
 CURRENTLY PROVIDED 8 ADA INCLUDING 2 VAN (NO MODIFICATIONS REQUIRED)

1006202  
 Mesa del Sol Level 2 Plan  
 Approved By Planning Director  
 and City Engineer On 11-26-11  
 [Signature]  
 City Engineer Planning Director

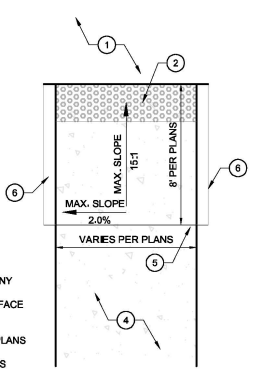
**B1 ADMINISTRATIVE AMENDMENT TO SITE PLAN**  
 1" = 30'-0"



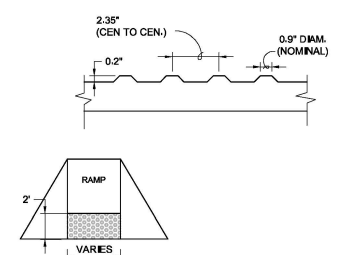
| Table 1106.1 Accessible Parking Spaces |  |   |
|--|--|---|
| Total Parking Spaces                   | Total Required Accessible Parking Spaces                                     | Number Required to be Van Accessible Spaces                 |
| 1-25                                   | 1  | 1   |
| 26-35                                  | 2  | 1   |
| 36-50                                  | 3  | 1   |
| 51-100                                 | 4  | 1   |
| 101-300                                | 8  | 2   |
| 301-500                                | 12   | 2   |
| 501-800                                | 15   | 3   |
| 801-1000                               | 20   | 3   |
| 1,001 and over                         | 20 spaces plus 1 space for every 100 spaces, or fraction thereof, over 1,000 | 1 of every 6 accessible parking spaces, or fraction thereof |

- KEYED NOTES:**
- 2% CROSS SLOPE MADE IN ANY DIRECTION.
  - DETECTABLE WARNING SURFACE PER ADAIC-501.
  - CONC. CURB, SEE PLANS.
  - CONCRETE SIDEWALK PER PLANS.
  - 1/2" EXPANSION MATERIAL.
  - STD. CONC. HEADER CURB AS REQUIRED.

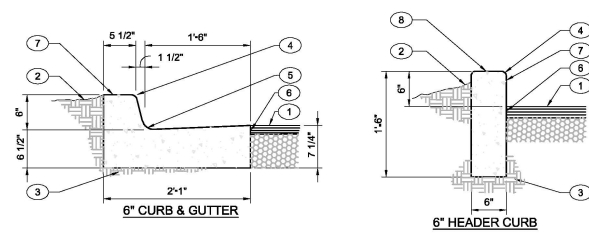
**A3 CURB ACCESS RAMPS**  
 NOT TO SCALE



**A4 DETECTABLE WARNING SURFACE**  
 NOT TO SCALE



**A5 CURB SECTIONS**  
 NOT TO SCALE



- CURB & GUTTER CONSTRUCTION NOTES:**
- CURBS, GUTTERS & CUT-OFF WALLS TO BE CONSTRUCTED OF 3500 PSF P.C.C. UNLESS OTHERWISE NOTED.
  - FINISHED GRADE.
  - PREPARED SUBGRADE.
  - 3/4" RADIUS.
  - 1 1/2" RADIUS.
  - TACK COAT.
  - CONCRETE CURB.
  - SMOOTH RUBBED FINISH.
- KEYED NOTES:**
- PAVEMENT SECTION PER DRAWINGS AND SPECS.
  - FINISHED GRADE.
  - PREPARED SUBGRADE.
  - 3/4" RADIUS.
  - 1 1/2" RADIUS.
  - TACK COAT.
  - CONCRETE CURB.
  - SMOOTH RUBBED FINISH.

|                                 |                                       |              |            |            |
|---------------------------------|---------------------------------------|--------------|------------|------------|
| APPROVED                        | ARCHITECTURAL                         | STRUCTURAL   | MECHANICAL | ELECTRICAL |
| GENERAL SERVICES ADMINISTRATION |                                       |              |            |            |
| PUBLIC BUILDING SERVICE         |                                       |              |            |            |
| BUILDING NAME                   | ICE                                   |              |            |            |
| BUILDING ADDRESS                | 5441 WATSON SE                        |              |            |            |
| BUILDING NUMBER                 | ALBUQUERQUE NEW MEXICO                |              |            |            |
| PROJECT DESCRIPTION             | ICE                                   |              |            |            |
| PROJECT NUMBER                  | ALBUQUERQUE, NEW MEXICO               |              |            |            |
| DRAWN BY                        | CKD. BY                               | DATE: 8/3/20 |            |            |
| TITLE                           | ADMINISTRATIVE AMENDMENT TO SITE PLAN |              |            |            |
| DRAWING TYPE                    | C/M/L                                 |              |            |            |
| DRAWING NUMBER                  | AA - SP                               |              |            |            |
| A-E                             | CONTRACT NUMBER                       | SEQUENCE     |            |            |

