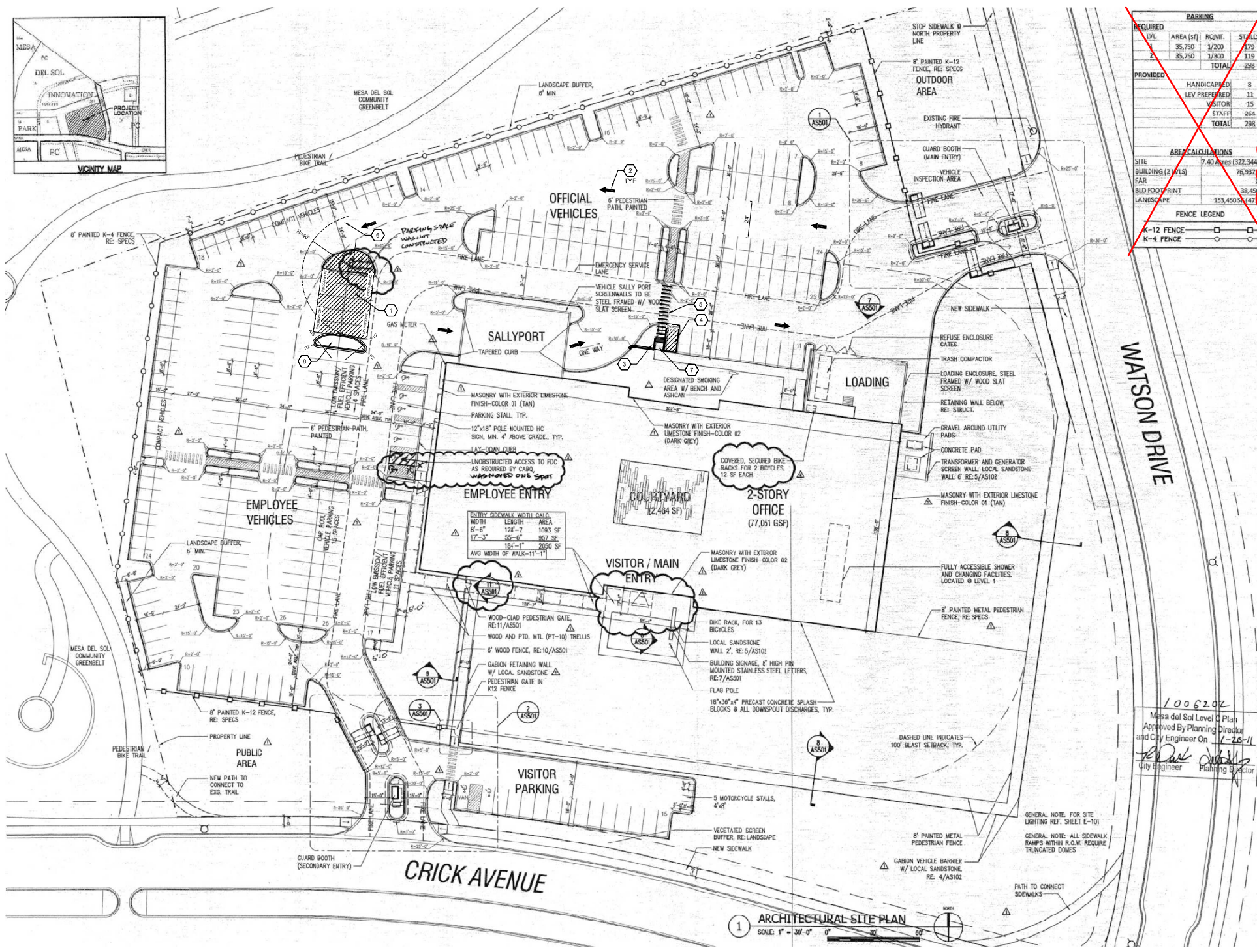


ADMINISTRATIVE AMENDMENT

FILE # _____ PROJECT # _____

APPROVED BY

DATE

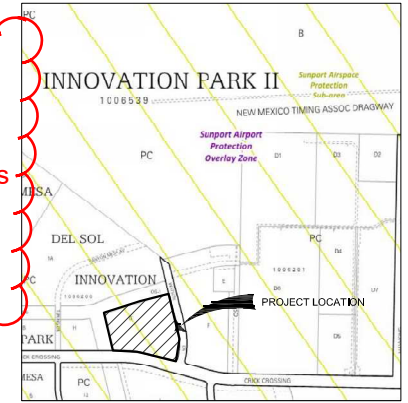


REQUIRED PARKING			
TYPE	AREA (SF)	POINT	STALLS
1	25,750	1/200	129
2	35,750	1/300	119
TOTAL			248

PROVIDED			
TYPE	AREA (SF)	POINT	STALLS
1	25,750	1/200	129
2	35,750	1/300	119
TOTAL			248

AREA CALCULATIONS			
TYPE	AREA (SF)	POINT	STALLS
SITE	7,400	1/200	370
BUILDING (2 FLOORS)	76,937	1/300	256
FAR	38,450	1/300	128
BLD FOOTPRINT	38,450	1/300	128
LANDSCAPE	153,450	1/300	511
TOTAL			813

*Refer to Updated Parking Tabulations Below -JMA 10/1/2020



Q-16-Z ZONE ATLAS PAGE
SCALE: NOT TO SCALE

- TCL KEYED NOTES**
- REMOVE END ISLAND, AND PARKING STALL STRIPING. PROVIDE INFILL PAVING AND STRIPING TO INDICATED NO PARKING AS SHOWN.
 - ARROWS TO INDICATED BUS ROUTE FROM PUBLIC ROAD TO SALLYPORT. ARROWS ARE NOT PROPOSED TO BE APPLIED TO PAVEMENT, SIMPLY FOR INDICATION OF PURPOSE FOR PARKING LOT MODIFICATIONS.
 - REMOVE CURBING, AND PROVIDE INFILL ASPHALT PAVEMENT, CURB AND GUTTER AND CURB ACCESS RAMP WITH DETECTABLE WARNING SURFACE PER DETAIL A4 THIS SHEET.
 - STRIPED PARKING STALL TO INDICATE NO PARKING.
 - REFRESH AND EXTEND EXISTING CROSSWALK, 6' WIDE CONTINENTAL STRIPINGS.
 - RADIUS SHOWN TO ENSURE BUS WILL HAVE ROOM FOR TURNING MOVEMENT. NO STRIPING IS PROPOSED TO BE APPLIED TO PAVEMENT TO INDICATED RADIUS.
 - NEW CONCRETE CURB AND GUTTER RAMP WITH DETECTABLE WARNING SURFACE PER DETAILS A3 THIS SHEET.
 - NEW CONCRETE CURB AND GUTTER PER DETAIL A5 THIS SHEET TO CREATE END ISLAND, PROVIDE IRRIGATION, AND LANDSCAPING PER IDO REQUIREMENTS.

- TCL GENERAL NOTES**
- SITE PLAN USED FOR TCL UPDATED WAS FROM GRADING AND DRAINAGE SUBMITTAL FROM 2011.
 - MODIFICATIONS ARE LIMITED TO THE AREAS IDENTIFIED.
 - ALL PROPOSED MODIFICATIONS ARE WITHIN THE SECURE PARKING AREA. THERE IS NO ACCESS FOR THE PUBLIC.

TABULATED PARKING:
PER TABLE 5-5-1 OFF-STREET PARKING REQUIREMENTS FOR OFFICE SPACE
3.5 PARKING SPACES PER 1,000 GSF
BUILDING IS 38,450 SF PER FLOOR (2 STORES) = 76,900 GSF
EXISTING CONDITIONS
PARKING COMPUTED UNDER CITY OF ALBUQUERQUE PLANNING REQUIREMENTS (PRIOR TO IDO)
297 SPACES (INCLUDING ADA)
MOTORCYCLE PARKING=5
PROPOSED CONDITIONS
77,900 X 3.5 = 273 SPACES REQUIRED (284 PROVIDED)
MOTORCYCLE PARKING=5 (Table 5-5-4)
ADA PARKING STALLS PER IDO (NM COMMERCIAL BUILDING CODE 2015) CHAPTER 11, ACCESSIBILITY (TABLE 1106.1)
FOR BETWEEN 100 AND 300 SPACES 8 ADA STALLS ARE REQUIRED INCLUDING 2 VAN ACCESSIBLE STALL
CURRENTLY PROVIDED 8 ADA INCLUDING 2 VAN (NO MODIFICATIONS REQUIRED)

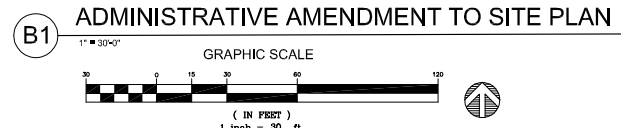
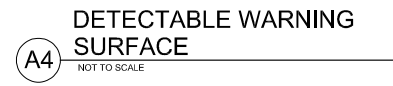
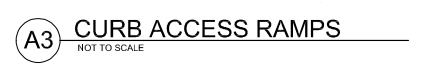


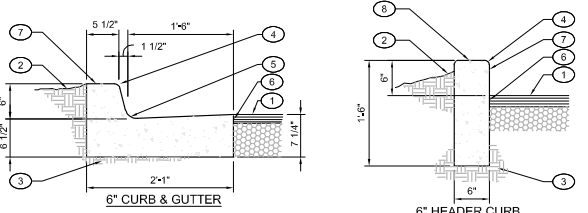
Table 1106.1 Accessible Parking Spaces

Total Parking Spaces	Total Required Accessible Parking Spaces	Number Required to be Van Accessible Spaces
1-25	1	1
26-50	2	1
51-100	3	1
101-150	4	1
151-200	5	1
201-250	6	2
251-300	7	2
301-350	8	2
351-400	9	3
401-450	10	3
451-500	11	3
501-550	12	3
551-600	13	3
601-650	14	3
651-700	15	3
701-750	16	3
751-800	17	3
801-850	18	3
851-900	19	3
901-950	20	3
951-1,000	21	3
1,001 and over	20 spaces plus 1 space for every 100 spaces, or fraction thereof, over 1,000	1 of every 6 accessible parking spaces, or fraction thereof

- KEYED NOTES:**
- 2% CROSS SLOPE MADE IN ANY DIRECTION.
 - DETECTABLE WARNING SURFACE PER AA/C-001.
 - CONC. CURB. SEE PLANS.
 - CONCRETE SIDEWALK PER PLANS.
 - 1/2" EXPANSION MATERIAL.
 - STD. CONC. HEADER CURB AS REQUIRED.



- CURB & GUTTER CONSTRUCTION NOTES:**
- CURBS, GUTTERS & CUT-OFF WALLS TO BE CONSTRUCTED OF 3500 PSF P.C.C. UNLESS OTHERWISE NOTED.
 - FINISHED GRADE.
 - PREPARED SUBGRADE.
 - 3/4" RADIUS.
 - 1 1/2" RADIUS.
 - TACK COAT.
 - CONCRETE CURB.
 - SMOOTH RUBBED FINISH.



- KEYED NOTES:**
- PAVEMENT SECTION PER DRAWINGS AND SPECS.
 - FINISHED GRADE.
 - PREPARED SUBGRADE.
 - 3/4" RADIUS.
 - 1 1/2" RADIUS.
 - TACK COAT.
 - CONCRETE CURB.
 - SMOOTH RUBBED FINISH.



APPROVED	ARCHITECTURAL	STRUCTURAL	MECHANICAL	ELECTRICAL
GENERAL SERVICES ADMINISTRATION				
PUBLIC BUILDING SERVICE				
BUILDING	NAME	ICE	ADDRESS	5441 WATSON SE
	NUMBER	ICE	CITY	ALBUQUERQUE
	DESCRIPTION	ALBUQUERQUE, NEW MEXICO	STATE	NEW MEXICO
PROJECT	NUMBER	NM1577ZZ		
	DRAWN BY	CKD	DATE	8/3/20
	TITLE	ADMINISTRATIVE AMENDMENT TO SITE PLAN		
DRAWING	TYPE	CIVIL		
	NUMBER			AA - SP
	A-E	CONTRACT NUMBER		
CONSTRUCTION				