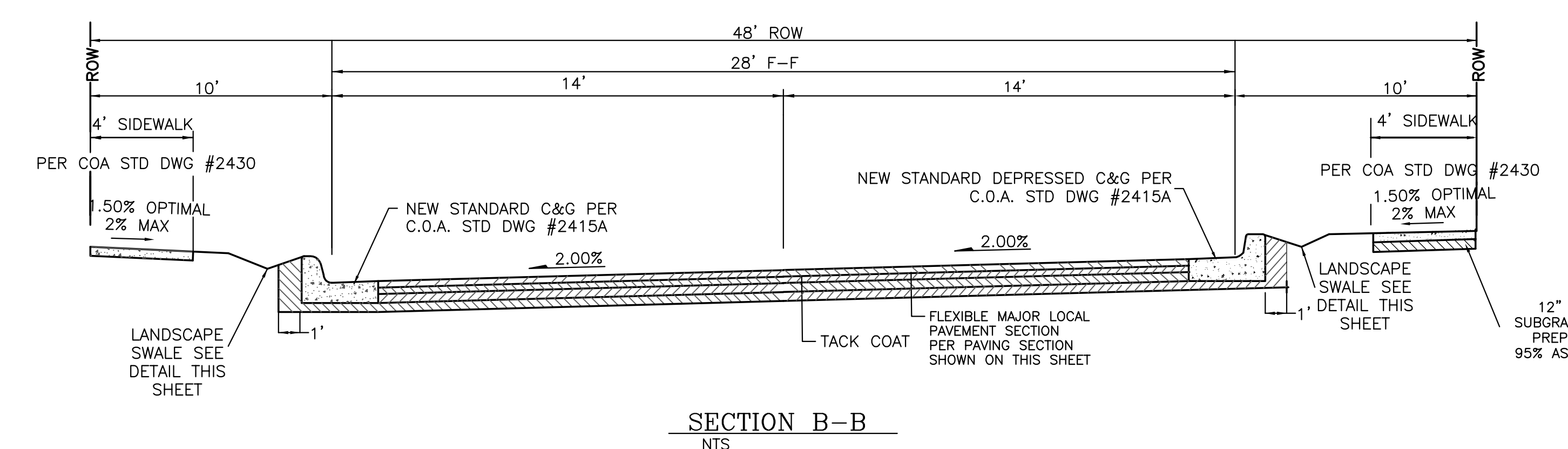
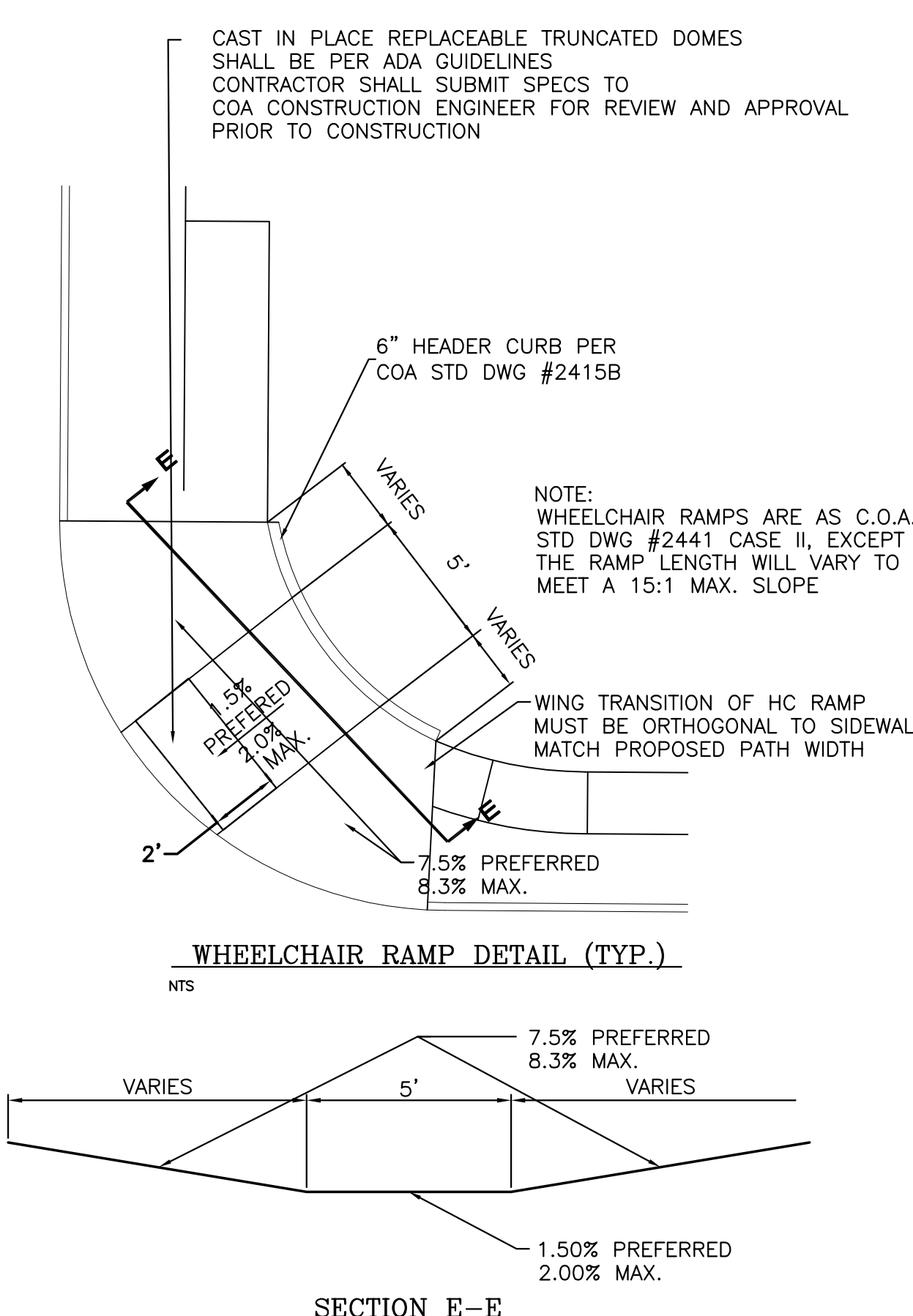


SECTION A-A  
NTS

SECTION C-C  
NTS

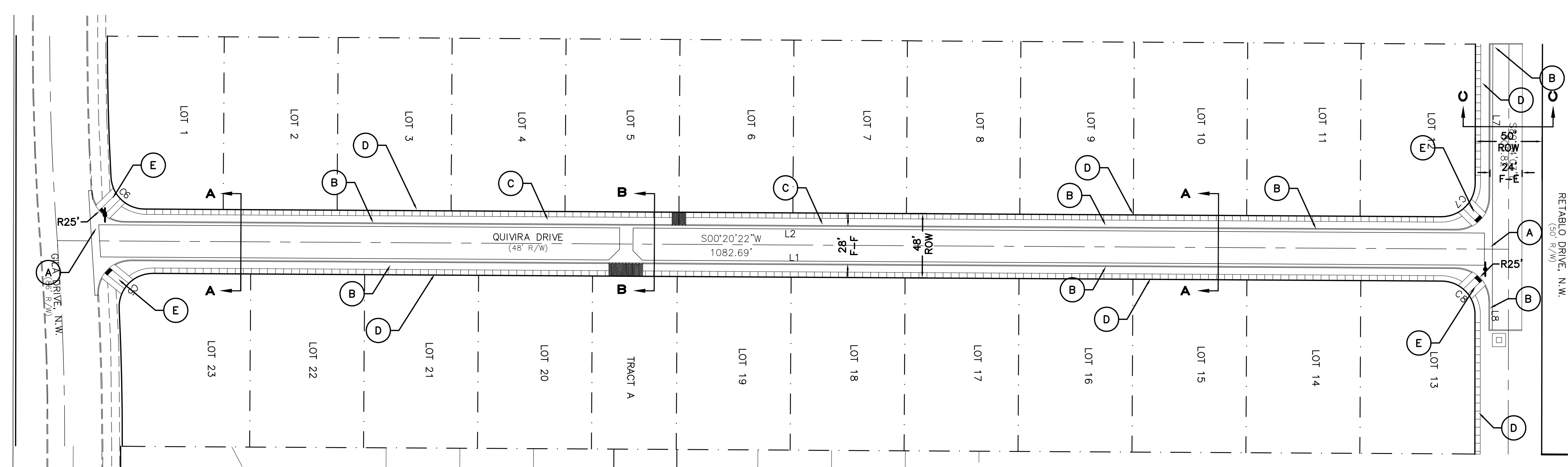


SECTION B-B  
NTS



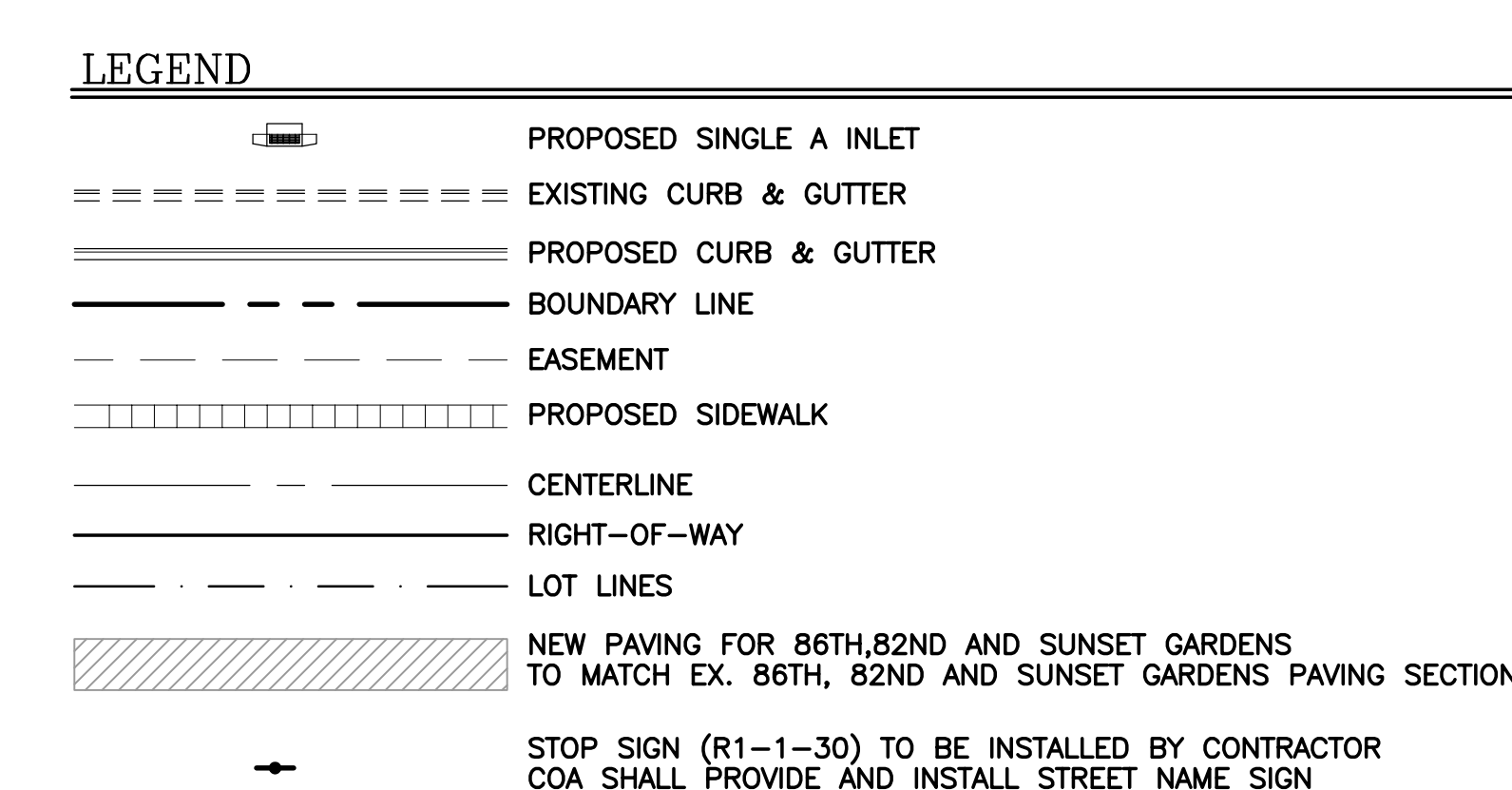
WHEELCHAIR RAMP DETAIL (TYP.)  
NTS

SECTION E-E

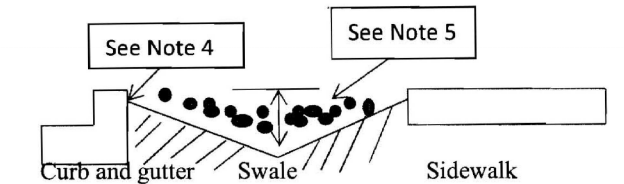


- KEYED NOTE:**
- (A) 6" VALLEY GUTTER PER C.O.A. STD DWG #2420 MODIFY CROSS SLOPE @ SEC A-A TO PROVIDE 2.00% CROSS SLOPE MAX
  - (B) STANDARD C&G PER COA STD DWG #2415A
  - (C) STANDARD DEPRESSED C&G PER COA STD DWG #2415A
  - (D) 4' SIDEWALK TO BE BUILT W/THIS PROJECT PER COA STD DWG #2430
  - (E) HANDICAP RAMP SEE DETAIL

- GENERAL NOTES:**
1. ALL WALL FOUNDATIONS/TOE MUST BE OUTSIDE COA ROW.
  2. CONTRACTOR SHALL BE RESPONSIBLE FOR INSTALLATION AND MAINTENANCE OF ALL ROADWAY SIGNS UNTIL FINAL ACCEPTANCE.



4. Streetscape Category:  
a. The landscape area between the sidewalk and back of curb is to be depressed and covered in rock to prevent erosion. See the detail and notes below:

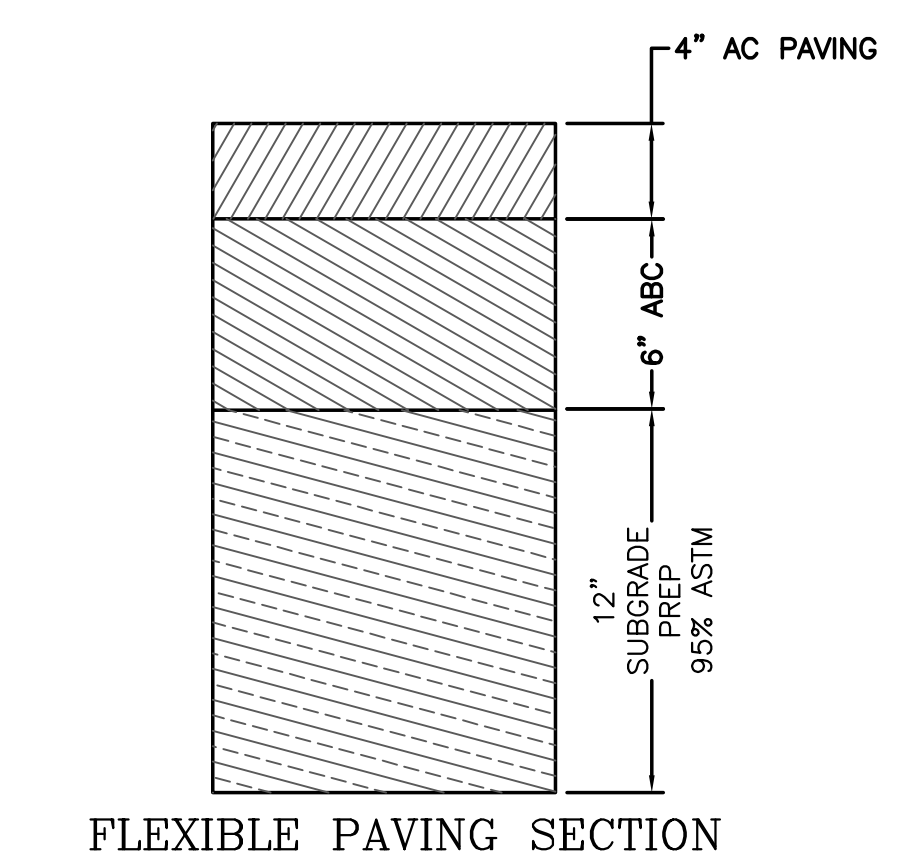


1. Swale to have side slopes of 5:1 (H:V).
2. For wide landscape buffers, greater than 10 feet, the maximum depth is 10 inches.
3. Landscape buffers 2 feet and less in width are excluded.
4. Final grade of dirt to be 1 to 2 inches below top of curb and top of sidewalk grade.
5. Surface between back of curb and sidewalk to be covered with gravel mulch (minimum 3/4"), cobbles or rip-rap. Do not fill entire swale.
6. A check dam will be required for swales on steeper longitudinal slopes, 2.5% and greater, and longer sections. The engineer will determine the location.
7. Landscape fabric is recommended, but not required, between the dirt and the stone. If landscape fabric is to be used it is to be permeable.
8. In the case where the sidewalk is existing and the landscape buffer is improved with landscaping and/or some form of erosion protection, this requirement does not apply.

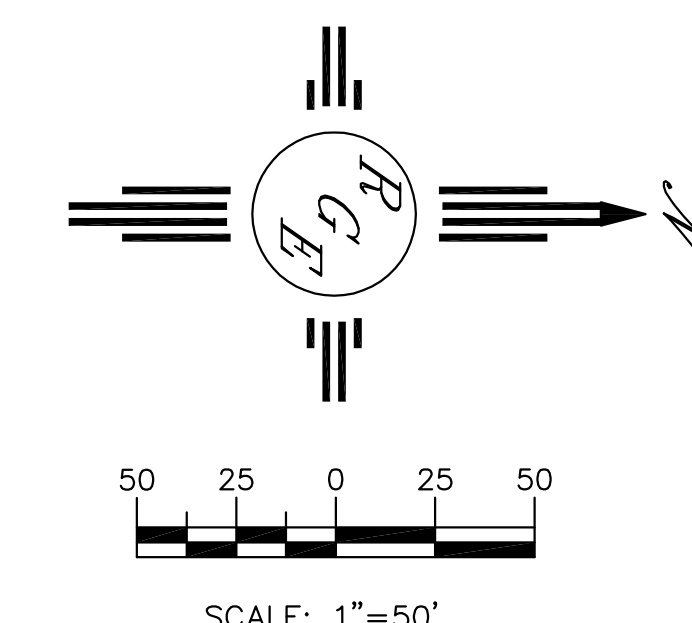
LANDSCAPE SWALE DETAIL

**PAVING NOTE**

1" SUBGRADE SOIL. R-VALUE>50. PLACED IN 2-6" COMPACTED LIFTS. 95% MIN. COMPACTION, AT OPT. MOISTURE ± 2.0%, ASTM D1557, OR OPT. MOISTURE, TO 4-4%, ASTM D698 FOR SOIL W/35% OR MORE MATERIAL PASSING THE NO. 200 SIEVE. SOIL NOT HAVING THE MIN. R-VALUE OF 50, SHALL BE REMOVED TO A DEPTH OF 2 FEET AND REPLACED BY THE CONTRACTOR WITH SUITABLE MATERIAL OR A PAVEMENT ACCOMMODATING THE EXISTING R-VALUE PER C.O.A. STANDARD SPECIFICATIONS.



FLEXIBLE PAVING SECTION



<b>AS BUILT INFORMATION</b>		CONTRACTOR	DATE
STAMPED BY	DATE	INSPECTOR'S FIELD VERIFICATION BY	DATE
RECORDED BY	DATE	MICRO-FILM INFORMATION	DATE
<b>BENCH MARKS</b>			
<b>SURVEY INFORMATION</b>		FIELD NOTES	DATE
NO.	BY		
<b>ENGINEER'S SEAL</b>			
NO.	DATE	DESIGNED BY: WCWJ	DATE: 8-06-20
		DRAWN BY: WCWJ	DATE: 8-06-20
		CHECKED BY: DS	DATE: 8-06-20
CHANGE TO SERVICE DETAIL			
NO.	DATE	REVISIONS	DESIGN
1	4/21/11		
 <b>Rio Grande Engineering</b> 2105 GOLF COURSE ROAD SUITE 8 RIO RANCHO, NM 87124 (505) 872-0999			
ABCWUA PUBLIC WORKS DEPARTMENT ENGINEERING GROUP			
<b>TITLE: QUIVIRA ESTATES MASTER PAVING PLAN</b>			
DESIGN REVIEW COMMITTEE	CITY ENGINEER APPROVAL	MO./DAY/YR.	MO./DAY/YR.
CITY PROJECT NO. -		ZONE MAP NO. -	SHEET 4 OF 10