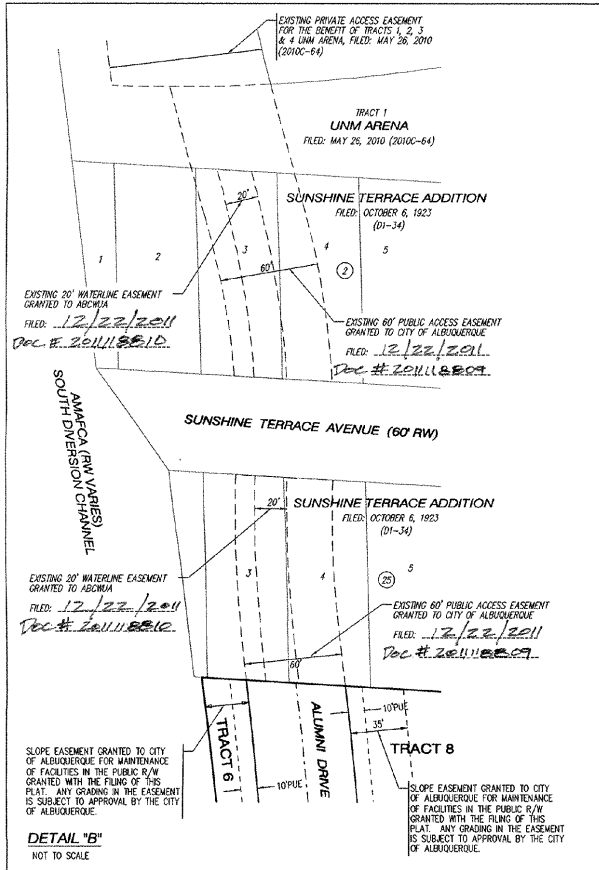






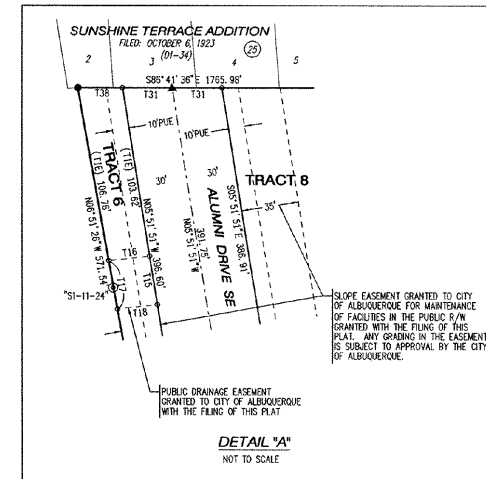
# PLAT OF UNM GIBSON COMMERCIAL DISTRICT

(A REPLAT OF TRACTS A & B,  
EVER READY SUBDIVISION  
TRACTS 4 & 5, GIBSON TRACTS  
AND TRACT A, 40/25 ASSOCIATES SUBDIVISION)  
AND UNPLATTED LAND IN SECTION 28, T10N, R3E  
ALBUQUERQUE, BERNALILLO COUNTY, NEW MEXICO  
DECEMBER, 2011



ID	DELTA	TANGENT	ARC	RADIUS	CHORD	CHORD BRG
C1	33°15'30"	133.83	260.11	448.10	256.47	N38°32'09"W
C2	133°15'51"	1260.15	1448.10	256.51	N08°38'45"W	
C3	48°19'08"	217.01	401.99	483.79	396.01	N30°38'13"W
C4	48°19'10"	175.50	345.48	1485.40	348.67	S07°06'32"W
C5	17°47'48"	138.45	270.70	871.51	269.61	S08°31'46"E
C6	11°24'59"	84.97	126.51	650.00	129.30	N59°58'10"W
C7	42°29'39"	252.73	482.06	650.00	471.11	N66°53'29"W
C8	40°19'45"	27.54	52.79	75.00	51.71	S60°24'24"E
C9	91°13'40"	13.28	20.70	13.00	18.58	S45°14'49"E
C10	23°52'56"	137.46	270.93	650.00	288.98	N07°16'32"W
C11	53°54'38"	330.55	611.59	650.00	589.28	N61°11'00"W
C12	82°16'28"	305.73	502.59	350.00	460.51	N47°00'05"W
C13	44°46'56"	257.79	508.04	650.00	495.20	N66°44'48"W
C14	10°53'45"	15.45	30.81	162.00	30.76	S71°35'03"E
C15	13°15'42"	33.48	66.60	162.00	66.51	S72°45'59"E
C16	90°50'03"	14.40	21.74	13.00	19.30	N52°34'57"E
C17	08°03'57"	42.44	84.75	602.00	84.68	N00°37'57"E
C18	06°29'01"	17.61	35.19	311.00	35.17	N00°09'31"W
C19	18°33'12"	47.21	83.59	289.00	93.18	N08°11'37"W
C20	03°58'22"	20.89	41.97	613.00	41.98	N17°25'54"W
C21	23°18'49"	120.86	236.44	586.00	236.80	S11°04'16"E
C22	04°04'48"	24.86	49.70	698.00	49.69	S02°37'32"W
C23	84°05'32"	11.72	10.06	13.00	17.41	S37°22'50"E
C24	13°15'41"	10.83	37.50	162.00	37.41	S72°47'46"E
C25	12°33'23"	31.68	63.11	288.00	62.99	S72°26'36"E
C26	44°48'56"	255.43	494.59	620.00	472.35	S66°44'48"W
C27	53°22'52"	19.10	35.40	38.00	34.14	S17°39'55"W
C28	14°43'02"	9.81	19.52	76.00	19.47	S01°40'00"E
C29	43°58'18"	17.76	33.77	44.00	32.95	S16°17'39"E
C30	04°17'09"	25.70	51.38	687.00	51.37	S36°05'15"E
C31	03°10'42"	17.01	34.00	613.00	34.00	N18°04'42"W
C32	52°18'08"	19.15	35.60	38.00	34.38	N63°49'07"W
C33	88°39'02"	73.25	116.04	75.00	104.91	N45°38'40"W
C34	52°18'08"	19.15	35.60	38.00	34.38	N27°28'12"W
C35	34°31'03"	190.44	389.30	613.00	363.74	N07°52'47"W
C36	36°33'07"	125.50	242.42	380.00	238.33	N69°51'45"W
C37	00°58'55"	2.80	5.60	338.00	5.60	N52°02'40"W
C38	46°40'16"	183.93	369.54	380.00	301.05	N28°11'59"W
C39	49°32'38"	147.67	276.70	320.00	268.16	S30°38'09"E
C40	37°04'42"	96.56	186.36	288.00	183.14	S73°56'48"E
C41	04°20'50"	14.39	28.78	379.00	28.75	N89°41'16"E
C42	35°07'47"	217.47	421.22	687.00	414.65	S70°34'25"E
C43	43°58'18"	17.76	33.77	44.00	32.95	S74°59'41"E
C44	14°43'02"	9.81	19.52	76.00	19.47	S89°37'19"E
C45	53°22'52"	19.10	35.40	38.00	34.14	N01°02'48"E
C46	44°48'56"	250.15	531.48	680.00	518.06	N66°44'48"W
C47	88°39'11"	12.69	20.11	13.00	18.16	N44°49'45"E
C48	05°52'07"	76.85	153.17	1495.40	153.10	N53°06'08"E
C49	13°15'42"	33.48	66.60	162.00	66.51	S72°45'59"E
C50	05°23'21"	15.23	30.44	289.00	30.43	N18°10'15"E
C51	08°45'31"	113.76	227.07	1485.40	226.85	S04°44'53"W
C52	01°02'25"	5.47	10.93	602.00	10.93	S04°04'44"W
C53	00°36'32"	3.71	7.42	698.00	7.42	S01°21'40"W
C54	70°18'15"	36.95	73.82	892.00	87.77	N69°05'45"E
C55	03°18'15"	19.15	35.60	38.00	34.38	N27°28'12"W
C56	25°47'01"	157.24	309.16	380.00	306.56	N75°14'48"E
C57	09°40'48"	56.16	112.06	687.00	111.94	N57°40'54"E
C58	15°20'15"	91.56	182.03	890.00	181.49	N52°01'25"E
C59	29°46'40"	178.68	349.46	680.00	345.62	S74°24'56"E
C60	06°12'41"	61.24	122.41	485.00	122.37	S07°24'59"W
C61	02°25'12"	4.98	9.96	390.00	9.96	S02°05'12"W

ID	BEARING	DISTANCE
T1	S76°05'56"W	36.32
T2	S89°15'35"E	28.78
T3	S89°20'20"E	128.78
T4	N04°28'03"W	2.77
T5	N01°42'46"E	12.77
T6	S89°10'10"E	22.49
T7	N309°22'07"E	58.67
T8	N70°46'41"W	28.67
T9	N70°22'39"W	28.64
T10	N59°06'04"W	47.44
T11	N59°12'02"W	47.43
T12	N50°32'38"W	42.79
T13	S44°21'35"W	30.35
T14	S02°47'52"E	58.57
T15	S60°05'28"W	67.41
T16	N02°47'52"E	83.71
T17	N88°50'15"E	10.00
T18	N02°47'52"E	37.68
T19	N44°21'25"E	39.19
T20	N06°51'29"W	30.07
T21	N86°55'10"E	25.07
T22	S05°51'51"E	30.04
T23	S86°55'10"W	24.54
T24	N89°07'13"E	88.78
T25	S00°22'02"W	54.73
T26	S89°24'22"W	5.81
T27	N79°26'11"W	53.60
T28	N50°32'38"W	2.89
T29	N73°42'04"E	37.05
T30	N73°42'04"E	40.33
T31	S00°45'00"W	5.88
T32	S89°08'16"W	94.58
T33	S60°05'28"W	37.10
T34	S60°05'28"W	37.11
T35	N88°08'19"W	72.98
T36	S88°41'30"E	36.39
T37	S88°08'19"E	49.33
T38	N89°08'16"E	86.43
T39	S00°22'08"W	39.02
T40	S00°22'08"W	43.29
T41	N50°32'38"W	39.90
T42	S73°42'04"W	20.10
T43	N86°41'36"W	27.24
T44	N17°18'10"E	45.08
T45	S17°18'10"W	29.86



DOCH 2011119138

12/22/2011 02:23 PM Page: 4 of 4  
10-PLAT 11-155-0-5-2011-0-0156-01 Toulous Oliveira, Bernalillo Co



**Bohannon & Huston**  
Surveyors  
7500 Jefferson St. NE Albuquerque, NM 87109-4335

SHEET 4 OF 4

Land Records Corp. FT ALB11966 BE 2011119138.004