

# PLANT SCHEDULE

TREES	COMMON NAME	SHRUBS	COMMON NAME	SHRUBS	COMMON NAME
	EXISTING TREE TO REMAIN		LARGE DECIDUOUS SHRUB CHAMISA APACHE PLUME FERNBUSH GAMBEL OAK WINDBREAKER SACATON		LOW GROUNDCOVER GRO-LOW SUMAC ARCADIA JUNIPER PRAIRIE SAGE
	LARGE DECIDUOUS TREE EMERALD SUNSHINE ELM FRONTIER ELM SHADE MASTER HONEY LOCUST SHUMARD OAK CHINESE PISTACHE JAPANESE PAGODA TREE		MEDIUM DECIDUOUS SHRUB LINDHEIMER MUHLY GRASS BLUE MIST SPIREA PAWNEE BUTTES WESTERN SAND CHERRY BUTTERFLY BUSH		LARGE VINE TRUMPET VINE SILVER LACE VINE CROSS VINE
	LARGE EVERGREEN TREE AUSTRIAN PINE AFGHAN PINE ARIZONA CYPRESS		SMALL DECIDUOUS SHRUB AUTUMN SAGE BLONDE AMBITION BLUE GRAMA EL TORO MUHLY GRASS		
	SMALL EVERGREEN TREE ESCAPMENT LIVE OAK ROCKY MOUNTAIN JUNIPER		MEDIUM EVERGREEN SHRUB THOMPSON BROOM TURPENTINE BUSH BEARGRASS RED YUCCA		
	SMALL DECIDUOUS TREE DESERT WILLOW NEW MEXICO OLIVE VITEX				

# LANDSCAPE CALCULATIONS

LANDSCAPE CALCULATIONS REFLECT COMPLETION OF PHASE 4

TOTAL SITE AREA = 9.98 AC = 435,117 SF  
 AREA OF LOT COVERED BY BUILDINGS = 96,592 SF (INCLUDING GYM)  
 NET LOT AREA = 338,525 SF

REQUIRED LANDSCAPE  
 REQUIRED LANDSCAPE AREA (15% OF NET LOT AREA) = 50,779 SF  
 PROVIDED LANDSCAPE AREA = 105,023 SF = 31%

REQUIRED TREES  
 TREES PER PARKING SPACES: REQUIRED = 1 TREE / 10 PARKING SPACES  
 TOTAL NUMBER OF PARKING = 199 SPACES  
 REQUIRED NUMBER OF PARKING LOT TREES = 20 TREES  
 PROVIDED NUMBER OF PARKING LOT TREES = 26 TREES  
 NO PARKING SPACE MAY BE MORE THAN 100 FEET AWAY FROM A TREE TRUNK

REQUIRED STREET TREES = NA  
 PROVIDED STREET TREES = NA

REQUIRED VEGETATIVE COVERAGE  
 REQUIRED VEGETATIVE COVERAGE = 78,767 SF = 75% OF PROVIDED LANDSCAPE AREA  
 A MINIMUM 25% OF REQUIRED VEGETATIVE COVERAGE BY GROUND PLANTS  
 PROVIDED TOTAL VEGETATIVE COVERAGE = 79,100 SF = 75% OF TOTAL PROVIDED LANDSCAPE AREA  
 TREE CANOPY COVERAGE = 59,140 SF  
 GROUND PLANT COVERAGE = 19,959 SF = 25% OF REQUIRED VEGETATIVE COVERAGE

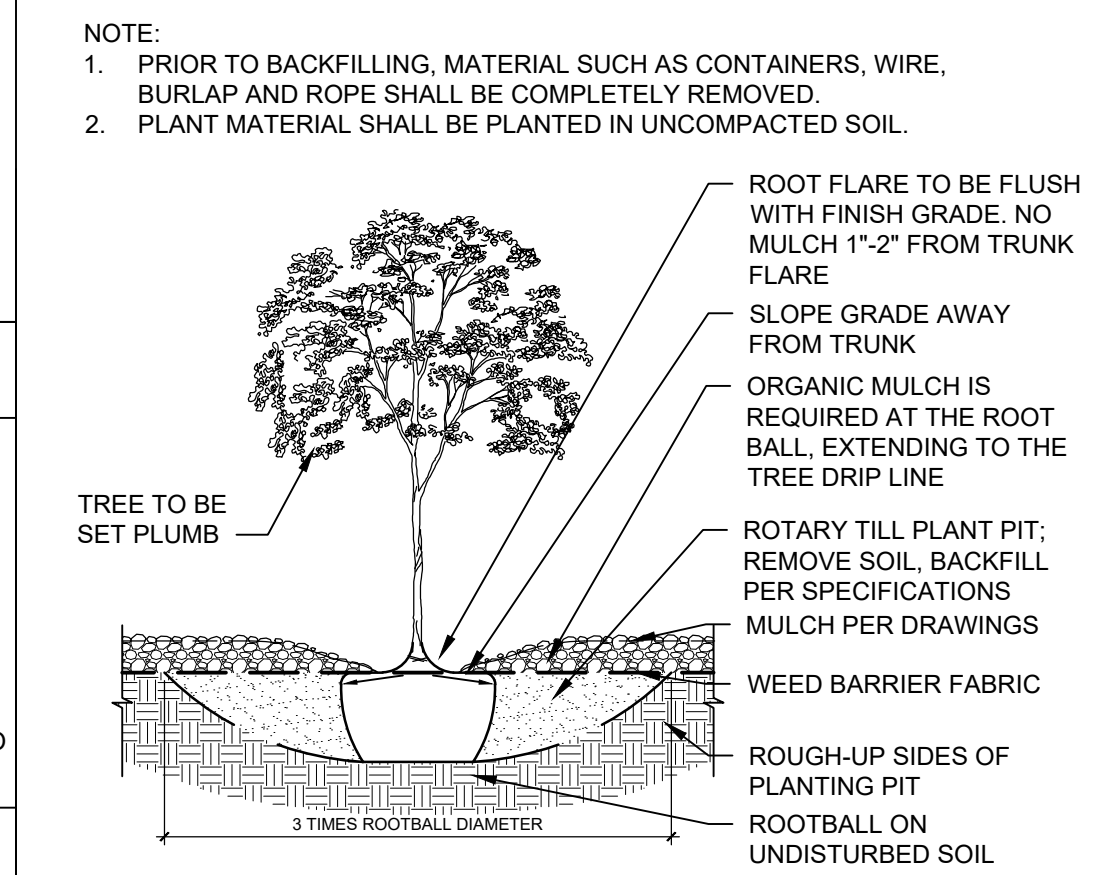
PARKING LOT AREA = 154,500 SF  
 PARKING LOT LANDSCAPING PROVIDED = 27,100 SF = 17%  
 MIN. 15% OF PARKING LOT AREA TO BE LANDSCAPED

GROUND COVER MATERIAL  
 TOTAL ROCK MULCH GROUND COVER = 34,231 SF = 53%  
 TOTAL ORGANIC MULCH GROUND COVER = 29,925 SF = 47%  
 A MAXIMUM OF 75% OF GRAVEL OR CRUSHER FINES IS PERMITTED 14-16-5-6(C)(5)(d)

# GENERAL SHEET NOTES

- A. RESPONSIBILITY FOR MAINTENANCE: THE CONTRACTOR WILL BE RESPONSIBLE FOR MAINTENANCE OF THE LANDSCAPE DURING CONSTRUCTION AND DURING A 90 DAY MAINTENANCE PERIOD FOLLOWING SUBSTANTIAL COMPLETION. THE OWNER WILL BE RESPONSIBLE FOR MAINTENANCE FOLLOWING THE 90-DAY MAINTENANCE PERIOD.
- B. STATEMENT OF COMPLIANCE WITH CITY OF ALBUQUERQUE: THE LANDSCAPE DESIGN WILL COMPLY WITH THE CITY OF ALBUQUERQUE'S GENERAL LANDSCAPING, BUFFERING, AND SCREENING REGULATIONS AND WATER CONSERVATION ORDINANCE.
- C. TIMING OF LANDSCAPE INSTALLATION: INSTALLATION OF THE LANDSCAPING SHALL BE COMPLETE WITHIN 60 DAYS OF THE RELATED BUILDING'S OCCUPANCY.
- D. SURFACE TREATMENT: ALL LANDSCAPE AREAS SHALL BE COVERED WITH TURF OR VEGETATION AND MULCH. ORGANIC MULCH IS REQUIRED AT EACH TREE ROOTBALL AREA/DRIPLINE.
- E. MINIMUM PLANT SIZES ARE AS PER CITY OF ALBUQUERQUE STANDARDS: 2" CALIPER TREES, 6' HEIGHT CONIFERS, AND 1 GALLON SHRUBS.
- F. AREAS DISTURBED DURING CONSTRUCTION, INCLUDING AREAS NOT WITHIN THE PROPERTY LINE, WILL BE STABILIZED.
- G. VEGETATIVE SCREENING SURROUNDING GROUND-MOUNTED TRANSFORMERS AND UTILITY PADS SHALL ALLOW 10' OF CLEARANCE IN FRONT OF THE EQUIPMENT DOOR AND 5' OF CLEARANCE ON THE REMAINING SIDES FOR SAFE OPERATION AND MAINTENANCE.
- H. IRRIGATED NATIVE SEEDING IS USED TO STABILIZE PERIMETER AREAS OF THE SITE WITH NATIVE GRASSES AND SHRUBS AND NATIVE DENSITIES. REGULAR AUTOMATED IRRIGATION WILL BE TURNED OFF AFTER TWO GROWING SEASONS. SEEDING WILL NOT ENCRoACH UPON THE BEAR ARROYO TRAIL TO THE SOUTH DURING OR AFTER CONSTRUCTION.

# TREE PLANTING DETAIL



# IRRIGATION NOTES

1. ALL PLANTINGS SHALL BE IRRIGATED BY AN AUTOMATED IRRIGATION SYSTEM, WITH PROGRAMMABLE SETTINGS, AUTOMATED IRRIGATION CONTROLLER, AND MOISTURE SENSOR TO AVOID OVERWATERING.
2. THE IRRIGATION SYSTEM SHALL BE DESIGNED TO MINIMIZE THE USE OF WATER.
3. THE IRRIGATION SYSTEM SHALL NOT IRRIGATE IMPERVIOUS SURFACES, INCLUDING SIDEWALKS, DRIVEWAYS, STREETS AND PARKING OR LOADING AREAS.
4. IRRIGATION POINT OF CONNECTION TO THE CITY WATER WILL BE LOCATED WITHIN PROPERTY LIMITS AND SHALL COMPLY WITH THE CITY OF ALBUQUERQUE REDUCED PRESSURE BACKFLOW PREVENTER STANDARDS AND SPECIFICATIONS.
5. RUN TIMES AND IRRIGATION ZONES SHALL BE BASED UPON PLANT SPECIES AND THEIR ESTABLISHMENT. RUN TIMES SHALL BE REGULARLY ADJUSTED ACCORDING TO PLANT MATURITY, SEASON, LOCATION AND PERFORMANCE.

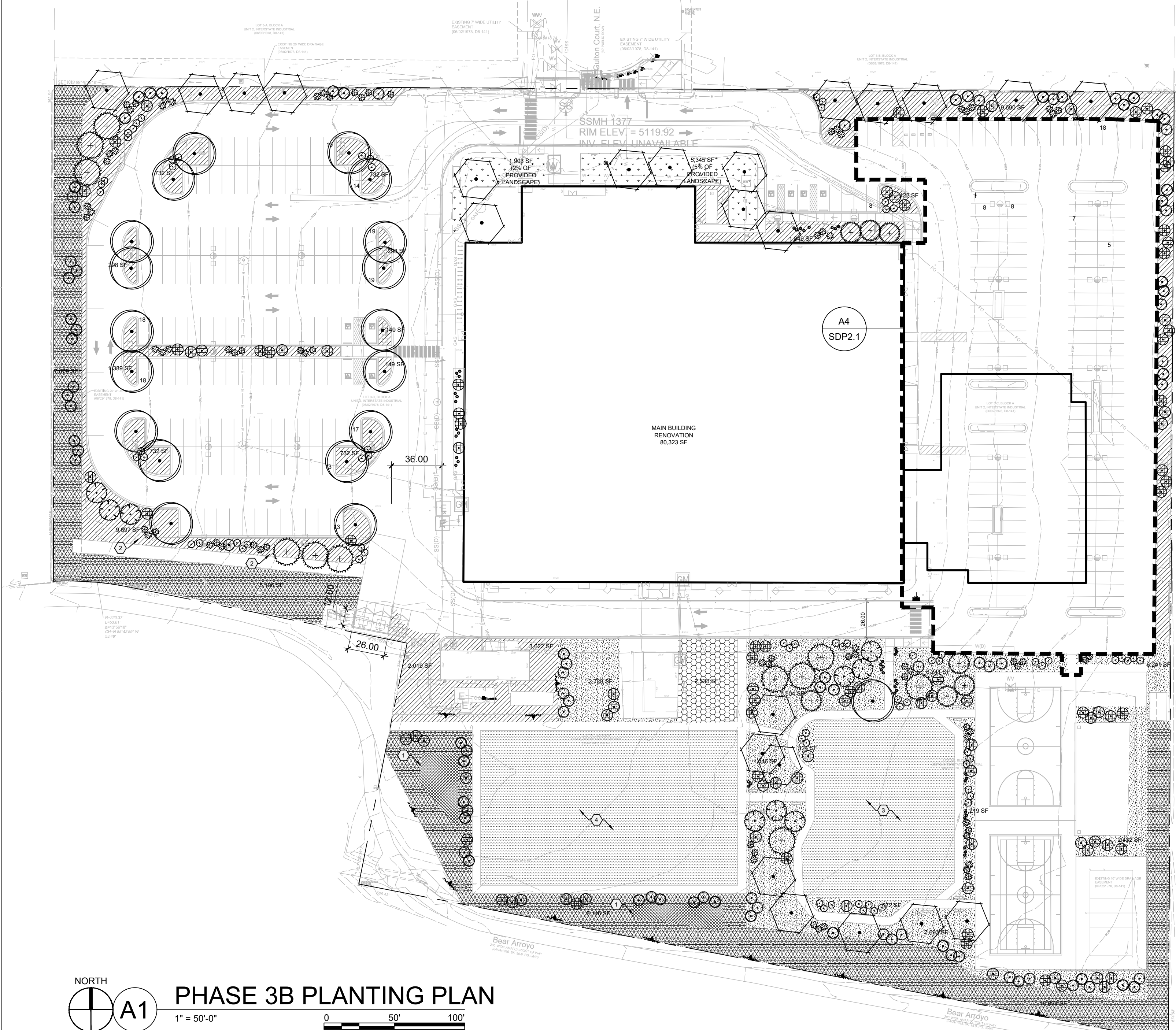
# SHEET KEYED NOTES

CODE	DESCRIPTION
1	RETENTION POND
2	PLANTING TO SCREEN PARKING LOT FROM ARROYO
3	EXISTING MULTIPURPOSE FIELD TO REMAIN
4	MULTIPURPOSE FIELD

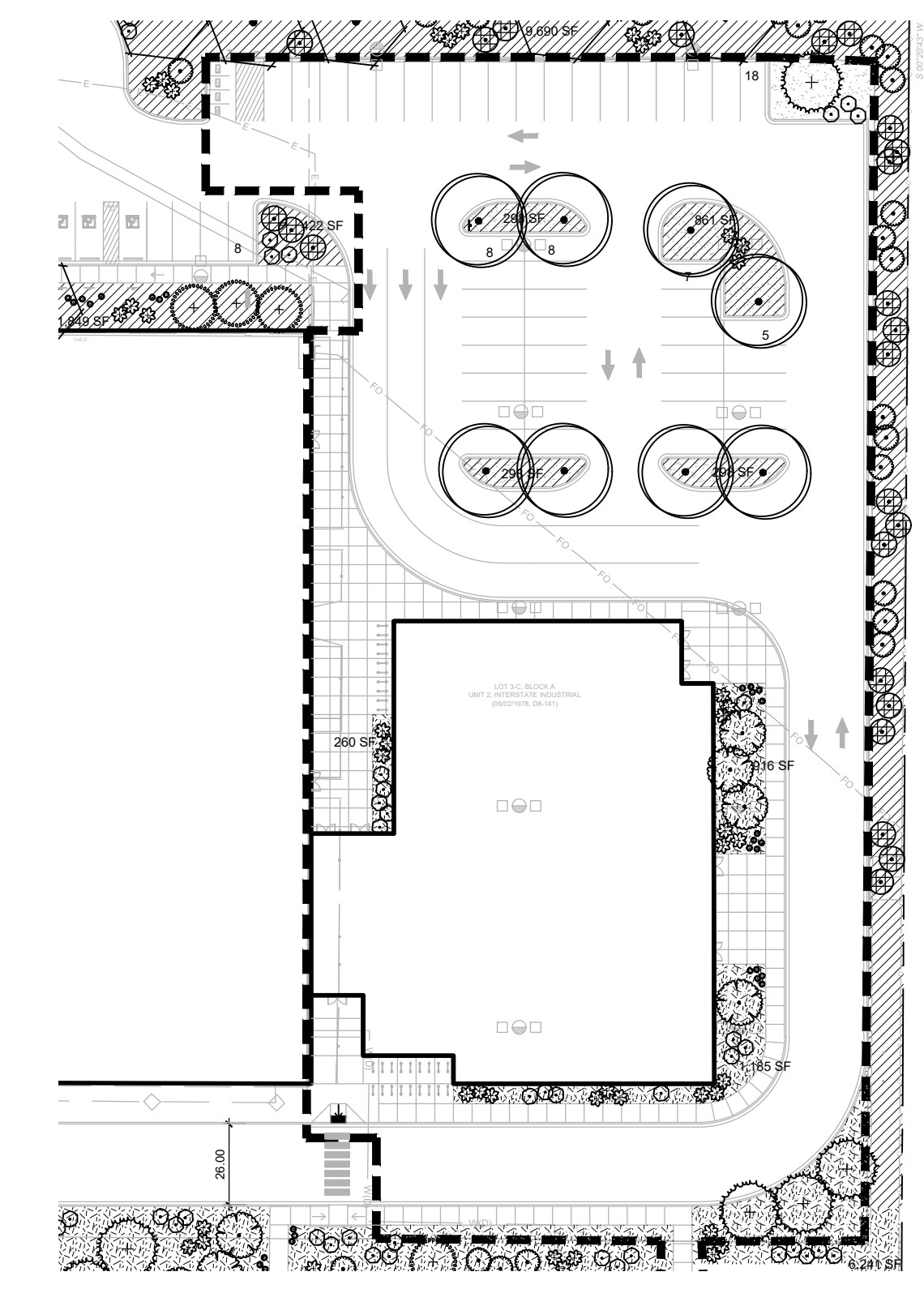
# LEGEND

SYMBOL	NOTES
	4"Ø ANGULAR GRAVEL AT 8" DEPTH OVER WEED BARRIER FABRIC
	3/4"Ø ROCK MULCH AT 3" DEPTH OVER WEED BARRIER FABRIC
	SHREDDED SCREENED BARK/WOOD MULCH 3" DEPTH OVER FILTER FABRIC
	EXISTING TURF AREA TO REMAIN
	IRRIGATED NATIVE SEED MIX BASIS OF DESIGN: GRAVELLY UPLANDS AND SLOPES SEED MIX LISTED IN CITY OF ALBUQUERQUE STANDARD SPECIFICATIONS
	SCHOOL GARDEN
	PROPERTY LINE

# VICINITY MAP



NORTH  
**A1**  
 PHASE 3B PLANTING PLAN  
 1" = 50'-0"  
 0 50' 100'



NORTH  
**A4**  
 PHASE 4 PLANTING PLAN  
 1" = 50'-0"  
 0 50' 100'



ARCHITECTURE  
 DESIGN  
 INSPIRATION

ARCHITECT

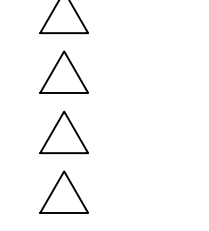


ENGINEER

PROJECT

EXPLORE ACADEMY  
 GULTON TENANT IMPROVEMENTS  
 PHASE III  
 6600 GULTON COURT NE  
 ALBUQUERQUE, NM 87109

REVISIONS



DRAWN BY	DS
REVIEWED BY	MB
DATE	1/29/21
PROJECT NO.	19-0099.003
DRAWING NAME	

PLANTING  
 PLAN

SHEET NO.

**SDP2.1**  
 OF