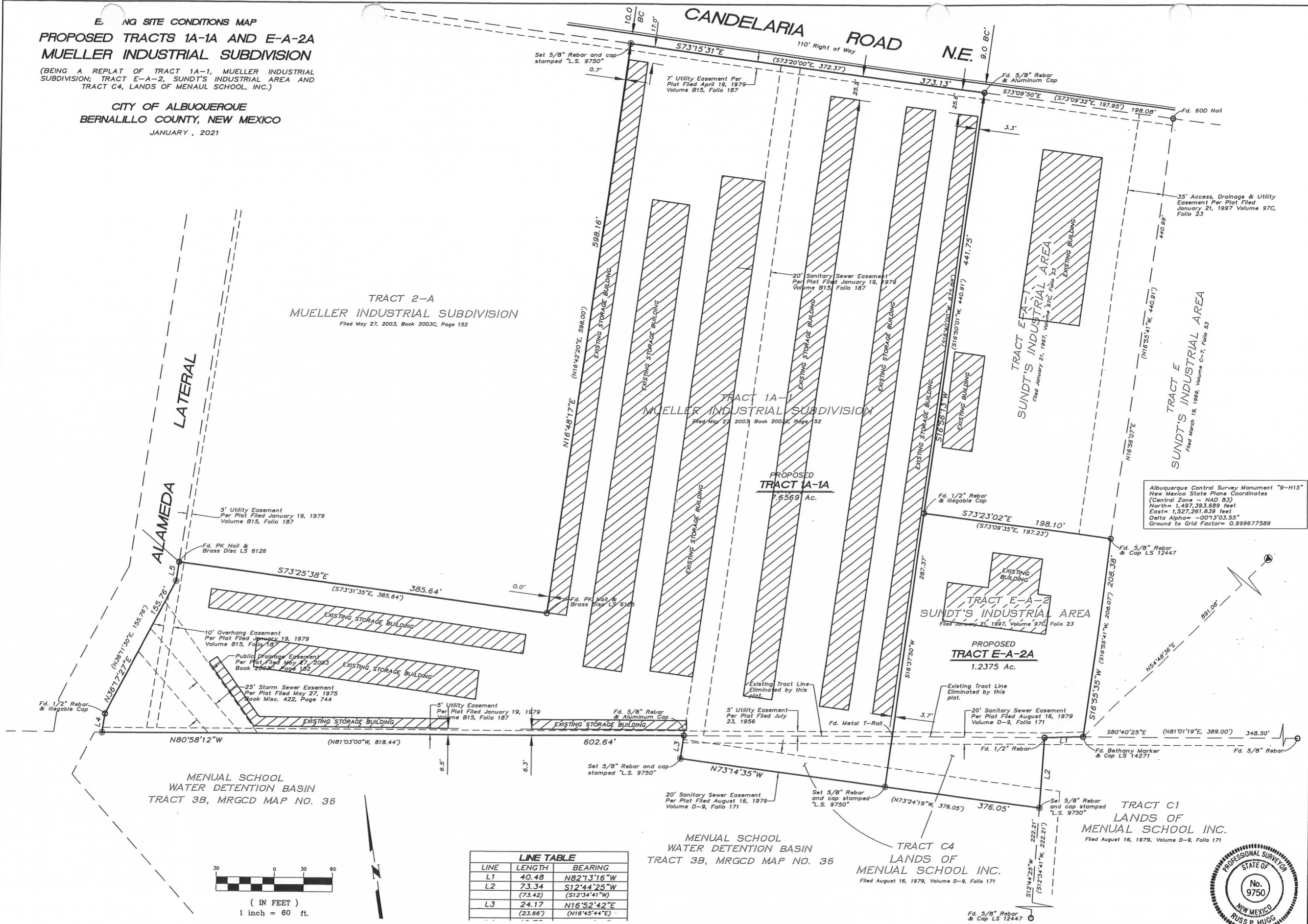


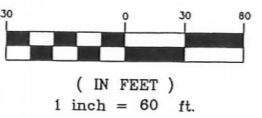
ENGINEERING SITE CONDITIONS MAP
PROPOSED TRACTS 1A-1A AND E-A-2A
MUELLER INDUSTRIAL SUBDIVISION

(BEING A REPLAT OF TRACT 1A-1, MUELLER INDUSTRIAL SUBDIVISION; TRACT E-A-2, SUNDT'S INDUSTRIAL AREA AND TRACT C4, LANDS OF MENAUL SCHOOL, INC.)

CITY OF ALBUQUERQUE
BERNALILLO COUNTY, NEW MEXICO
 JANUARY, 2021



Albuquerque Control Survey Monument "9-H15"
 New Mexico State Plane Coordinates
 (Central Zone - NAD 83)
 North = 1,497,393.689 feet
 East = 1,527,261.639 feet
 Delta Alpha = -001°3'03.55"
 Ground to Grid Factor = 0.999677589



LINE	LENGTH	BEARING
L1	40.48	N82°13'16"W
L2	73.34	S12°44'25"W
	(73.42)	(S12°34'41"W)
L3	24.17	N16°52'42"E
	(23.66)	(N16°45'44"E)

EXISTING CONDITIONS EXHIBIT

