

ADMINISTRATIVE AMENDMENT

FILE # _____ PROJECT # _____

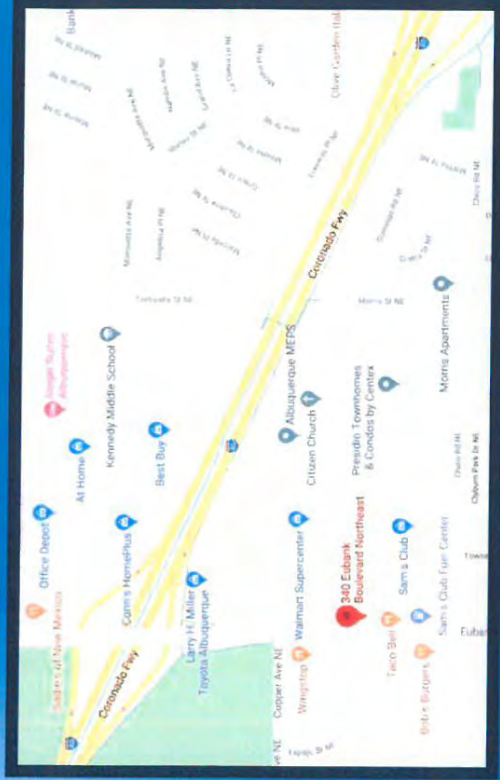
APPROVED BY

DATE

REVISED 4/21

CHASE

#38200P367110
Eubank Blvd NE and Chico Rd NE
340 Eubank Blvd NE
Albuquerque, NM 87123 USA



REVISION NOTES:

- R1: Customer Drawing - Revised building elevations - 08/14/20 TT
- R2: Customer Drawing - Chg E2 & E3 to 30ft. Interests - 08/18/20 TT
- R3: Detail Drawing - Created E2 & E3 to 30ft. Interests - 08/18/20 TT
- R4: Detail Drawing - Added detail for L23. Revised lay from L19 to E19 - 08/19/20 gmc
- R5: Detail Drawing - Revised to add new site plan and added (2) custom motorcycle parking signs - 08/27/20 gmc
- R6: Detail Drawing - Added BTRW details to all four interests. Added note to E2, E4 to check w/ construction drawings if BTRW will be necessary. Added notes for E1, E4 - 08/28/20 gmc
- R7: Detail Drawing - Added (2) custom motorcycle parking signs to E2, E4 - 08/28/20 gmc
- R8: Detail Drawing - Added (2) custom motorcycle parking signs to E2, E4 - 08/28/20 gmc
- R9: Detail Drawing - Added (2) custom motorcycle parking signs to E2, E4 - 08/28/20 gmc
- R10: Detail Drawing - Added (2) custom motorcycle parking signs to E2, E4 - 08/28/20 gmc
- R11: Detail Drawing - Added (2) custom motorcycle parking signs to E2, E4 - 08/28/20 gmc
- R12: Detail Drawing - Added (2) custom motorcycle parking signs to E2, E4 - 08/28/20 gmc
- R13: Detail Drawing - Added (2) custom motorcycle parking signs to E2, E4 - 08/28/20 gmc
- R14: Detail Drawing - Added (2) custom motorcycle parking signs to E2, E4 - 08/28/20 gmc
- R15: Detail Drawing - Chg E2 and E3 to LF-WB0-24 - 03/11/21 TT



Signtech
4444 Federal Blvd. San Diego, CA 92102
Phone: (619) 527-5100 / Fax: (619) 527-6111
signtech.com



JP Morgan Chase Bank
#38200P367110

Eubank Blvd NE and Chico Rd NE
340 Eubank Blvd NE
Albuquerque, NM 87123

Initial Date: 08/11/20
Salesperson: Arthur Navarro
Coordinator: Lorena Leon
Designer: Thomassen
Scale: As noted

CUSTOMER APPROVAL

Customer Signature _____ Date _____
COPY, COLORS & SIZES

Signtech does NOT provide primary electrical to sign location - **RESPONSIBILITY OF OTHERS!**

Customer Signature _____ Date _____
This design is the exclusive property of Signtech and may not be reproduced in whole or in part, without the prior written approval.

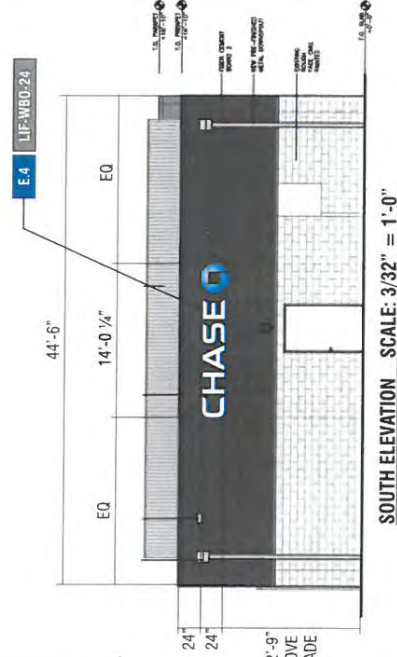
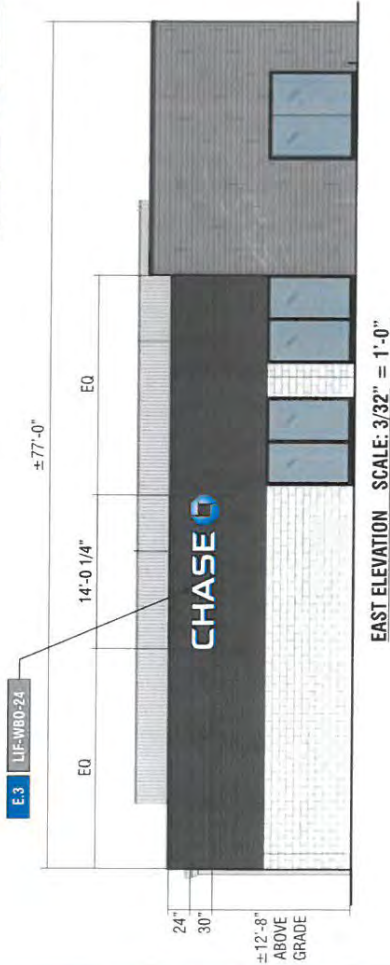
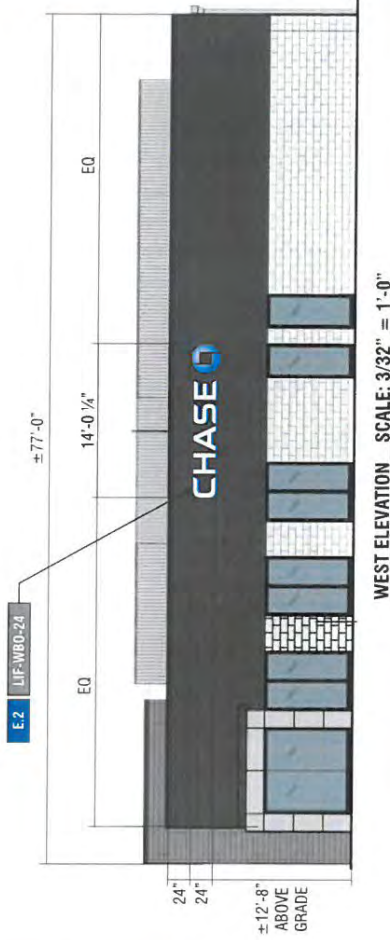
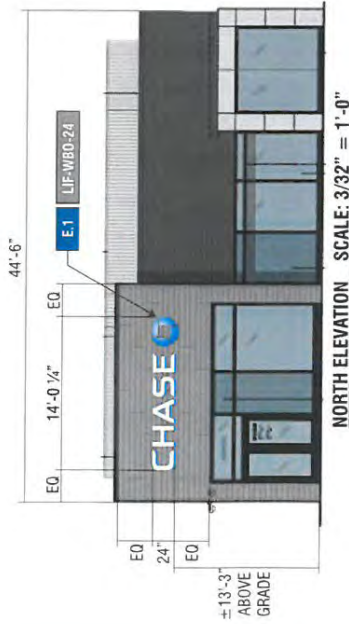
Drawing Number: 20-01034

Project ID: CHASE_38200P367110_1

Revision: R15 - 03.11.21

Page: 1 **Permit**

SIGNAGE OVERVIEW



Building Fascia: 1540.
 Sign #1: 36.9
 Sign #2: 36.9
 Signs Total: 73.8
 Ratio: 4.7

Building Fascia: 872
 Sign #1: 36.9
 Sign #2: 36.9
 Signs Total: 73.8
 Ratio: 8.4



Signtech
 4444 Federal Blvd. San Diego CA 92102
 Phone: (619) 527-5100 / Fax: (619) 527-6111
 signtech.com



JP Morgan Chase Bank
 #38200P367110
 Eubank Blvd NE and Chico Rd NE
 340 Eubank Blvd NE
 Albuquerque, NM 87123

Initial Date: 08/11/20
 Salesperson: Arthur Navarro
 Coordinator: Lorena Leon
 Designer: Thomisen
 Scale: As noted

CUSTOMER APPROVAL

Customer Signature _____ Date _____
 COPY COLORS & SIZES

Signtech does NOT provide primary electrical to sign location - **RESPONSIBILITY OF OTHERS!**

Customer Signature _____ Date _____
 This design is the exclusive property of Signtech and cannot be reproduced in whole or in part, without their prior written approval.

Drawing Number: 20-01034
 Project ID: CHASE_36200P367110_1
 Revision: R15 - 03.11.21

Exterior Elevations



Signtech
 4444 Federal Blvd. San Diego CA 92102
 Phone: (619) 527-6100 / Fax: (619) 527-6111
 signtech.com



JP Morgan Chase Bank
 #38200P367110

Eubank Blvd NE and Chico Rd NE
 340 Eubank Blvd NE
 Albuquerque, NM 87123

Initial Date: 08/11/20
 Salesperson: Arthur Navarro
 Coordinator: Lorena Leon
 Designer: Thomassen
 Scale: As noted

CUSTOMER APPROVAL

Customer Signature _____ Date _____
COPY, COLORS & SIZES

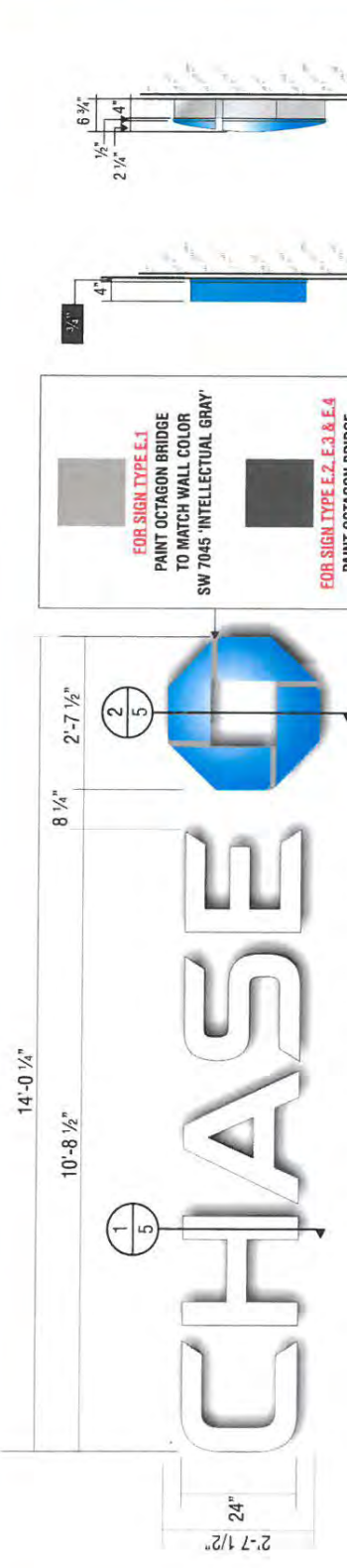
Signtech does NOT provide primary electrical to sign location - **RESPONSIBILITY OF OTHERS!**

Customer Signature _____ Date _____
 This design is the exclusive property of Signtech and cannot be reproduced in whole or in part, without their prior written approval.

Drawing Number: 20-01034

Project ID: CHASE_38200P367110_1

Revision: R15 - 03.11.21



FRONT VIEW
 SCALE : 1/2" = 1'-0"

ENDVIEW OF LETTER
 SCALE : 1/2" = 1'-0"

ENDVIEW OF LOGO
 SCALE : 1/2" = 1'-0"



FOR SIGN TYPE E.1
 PAINT OCTAGON BRIDGE TO MATCH WALL COLOR
 SW 7045 'INTELLECTUAL GRAY'

FOR SIGN TYPE E.2, E.3 & E.4
 PAINT OCTAGON BRIDGE TO MATCH WALL COLOR
 SW 7020 'BLACK FOX'

- E.1**
 - E.2**
 - E.3**
 - E.4**
- SIGN TYPE LIF-WB0-24**

MANUFACTURE AND INSTALL SETS OF ILLUMINATED LETTERS & LOGO w/PLEX FACES & RETURNS

LETTERS:
FACE: 177" ARISTECH #7328 P-95 WHITE PLEX (MATT SIDE TO BE 1ST SURFACE) CHEM WELDED TO RETURNS
RETURNS: 0.118" x 4" DEEP ARISTECH #6046 BLUE WITH 3635-70 DIFFUSER VINYL ON 2ND (INTERIOR) SURFACE.
BACKS: .080" ALUM BACK WITH 3/4" x .080" OUTSIDE ALUM RETURN AND 1/2" x 1/8" ALUM ANGLE CLIPS ON INTERIOR OF LETTER FOR FACE ATTACHMENT
PAINT: EXTERIOR PAINTED MATTHEWS MP-00366 CHASE BLUE SEMI-GLOSS FINISH (60-70 UNITS), AND INTERIOR PAINTED SPRAY-LAT STAR BRITTE WHITE LIGHT ENHANCEMENT PAINT.
ILLUMINATION: SLOAN PRISM 7100K #701269-7WSJ1-MB WHITE LEDs AND SLOAN POWER SUPPLY REQUIRED FOR PROPER EVEN ILLUMINATION.

LOGO:
BACKS: .080" ALUM BACK WITH STACK WELDED 4" x .080" ALUM RETURNS.
LOGO CAN FACE: .080" ALUM BRIDGE ELEMENTS WELDED TO INSIDE & OUTSIDE RETURNS
PLEX FACE: .118" THERMO FORMED ARISTECH #6046 BLUE LOGO ELEMENTS CHEM WELDED TO 3/4" CLEAR PLEX 2ND SURFACE FACES.
PAINT: EXTERIOR PAINT MATTHEWS "CHASE NICKEL" #MP-19891 GLOSS FINISH AND INTERIOR PAINTED SPRAY-LAT STAR BRITTE WHITE LIGHT ENHANCEMENT PAINT.
ILLUMINATION: SLOAN PRISM #701269-BLSJ1-MB BLUE LEDs AND SLOAN POWER SUPPLY AS REQUIRED FOR PROPER EVEN ILLUMINATION

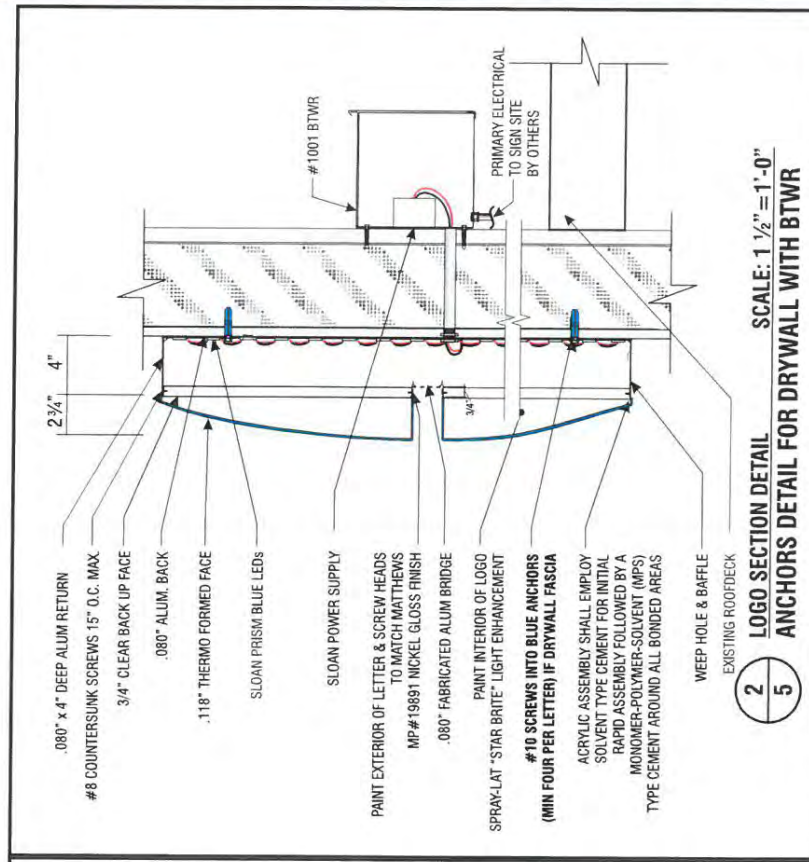
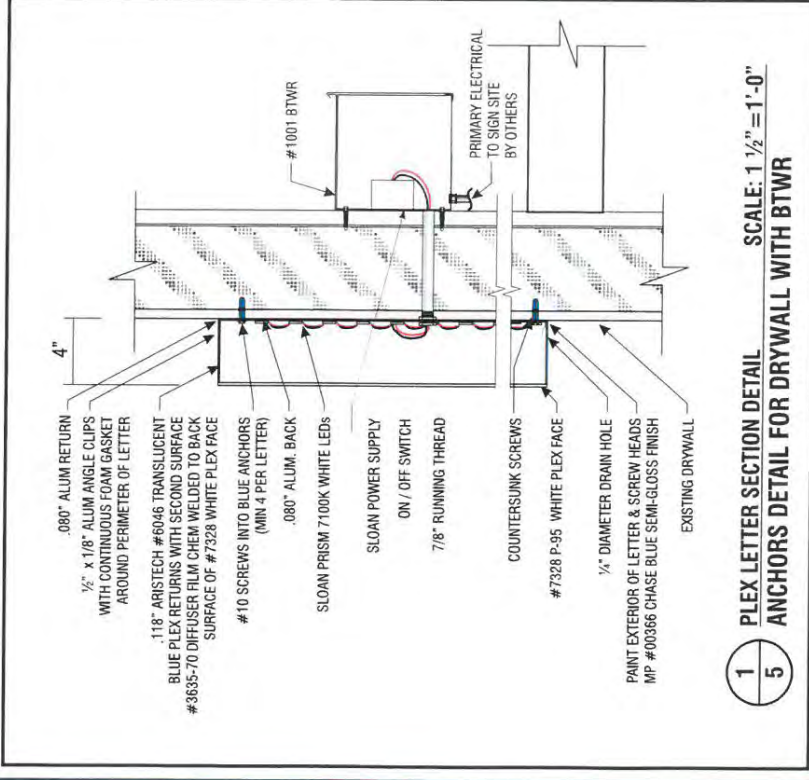


3D VIEW OF OCTAGON

ALL EXPOSED FASTENER HEADS SHALL BE PAINTED TO MATCH THE EXTERIOR SURFACE FINISH

ELECTRICAL REQUIREMENTS FOR LED ILLUMINATION
 As required by standard #2161, Signtech Electrical Advertising, Inc., exclusively uses secondary ground/fault-interrupted (GFI) transformers
 Each Sign MUST have: - A dedicated branch circuit
 - Three wires - Line, Ground, and Neutral
 - Wire Size: Min: 12 GA THHN Copper Wire
 NOTE: The gauge of the wire is dictated by the length of the run & ampereage as per NEC Article 600.
 - The ground wire must be continuous & go from the sign to the panelboard ground bus.

**ATTACHMENT METHOD TO BE VERIFIED BY INSTALLER
IN THE FIELD DEPENDING ON WALL TYPE AND ACCESS.**



Signtech
4444 Federal Blvd. San Diego, CA 92102
Phone: (619) 527-6100 / Fax: (619) 527-4111
signtech.com



JP Morgan Chase Bank
#38200P367110
Fubank Blvd NE and Chico Rd NE
340 Eubank Blvd NE
Albuquerque, NM 87123

Initial Date: 08/11/20
Salesperson: Arthur Navarro
Coordinator: Lorena Leon
Designer: Thompson
Scale: As noted

CUSTOMER APPROVAL
Customer Signature _____ Date _____
COPY, COLORS & SIZES

Signtech does NOT provide primary electrical to sign location - **RESPONSIBILITY OF OTHERS!**

Customer Signature _____ Date _____
This design is the exclusive property of Signtech and cannot be reproduced in whole or in part, without their prior written approval.
Drawing Number: 20-01034
Project ID: CHASE_38200P367110_1
Revision: R15 - 03.11.21

Page: 5 **Permit**

**VERIFY WALL MATERIAL
VERIFY IF EXPOSED RACEWAY OR BEHIND THE WALL RACEWAY IS NEEDED PRIOR TO FABRICATION FOR SIGN TYPE E.4**

EXISTING CONDITIONS



Signitech™
 4444 Federal Blvd. San Diego CA 92102
 Phone: (619) 527-6100 / Fax: (619) 527-6111
 signitech.com



JP Morgan Chase Bank
 #38200P367110

Eubank Blvd NE and Chico Rd NE
 340 Eubank Blvd NE
 Albuquerque, NM 87123

Initial Date: 08/11/20
 Salesperson: Arthur Navarro
 Coordinator: Lorena Leon
 Designer: T. Thomson
 Scale: As noted

CUSTOMER APPROVAL

Customer Signature _____ Date _____
COPY, COLORS & SIZES

Signitech does NOT provide primary electrical to sign location - **RESPONSIBILITY OF OTHERS!**

Customer Signature _____ Date _____
 This design is the exclusive property of Signitech and cannot be reproduced in whole or in part, without their prior written approval.

Drawing Number: 20-01034

Project ID: CHASE_38200P367110_1

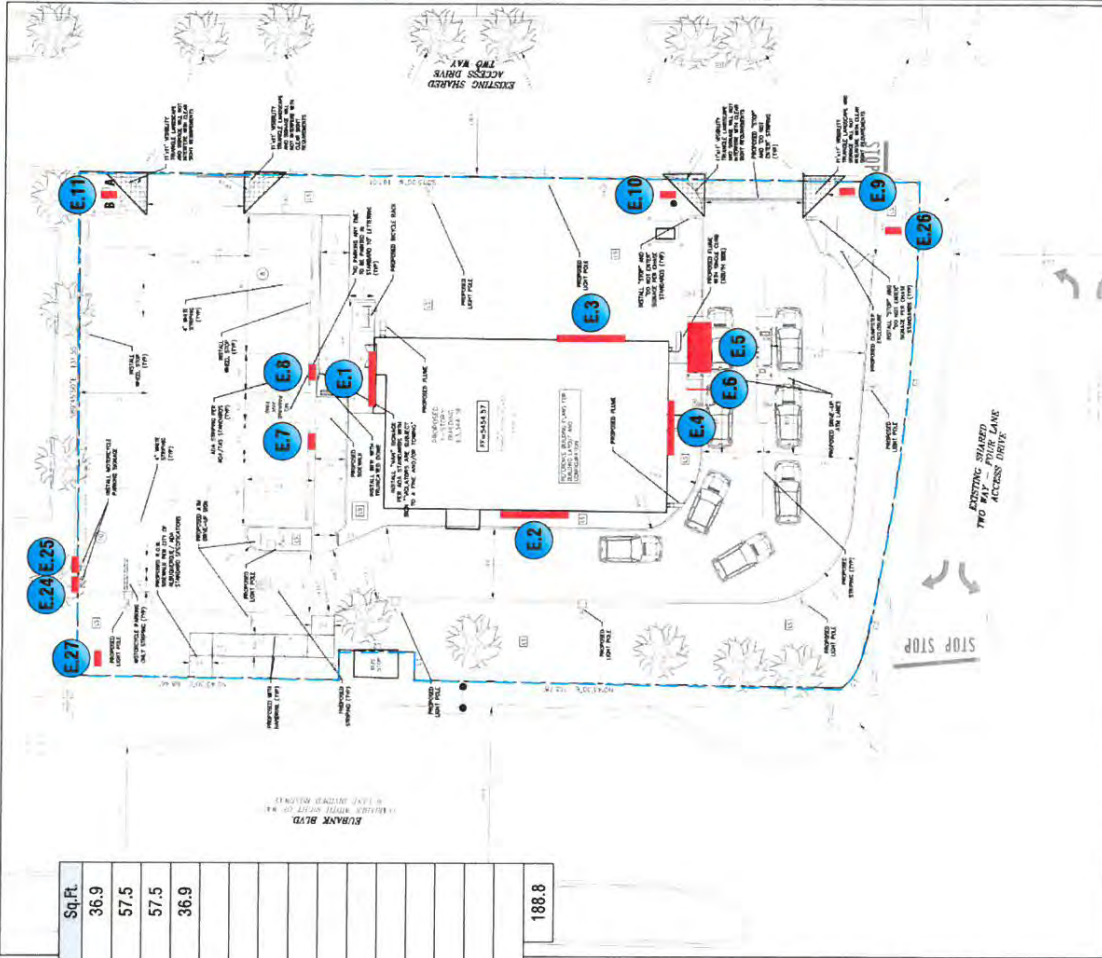
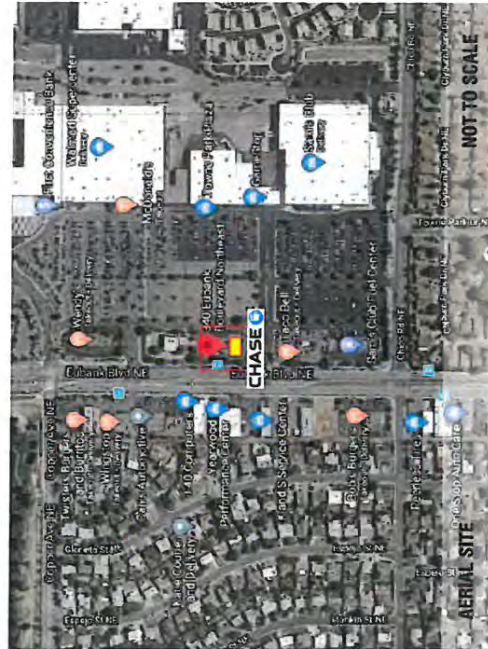
Revision: R15 - 03.11.21

Existing Conditions


Previous Request for Permit

EXTERIOR SIGN LEGEND - ALLOWED


Elevation	Sign No.	Sign Type	Description	Sq. Ft.
North	E.1	LIF-WBO-24	24" White Channel Letters and Logo	36.9
West	E.2	LIF-WBO-30	30" White Channel Letters and Logo	57.5
East	E.3	LIF-WBO-30	30" White Channel Letters and Logo	57.5
South	E.4	LIF-WBO-24	24" White Channel Letters and Logo	36.9
	E.5	CAN-ATM-SIG-OCT-NP	ATM Signature Canopy w/ Octagon - No Pedestal	
	E.6	HB-U	Headache Bar	
	E.7	TC-P-ADA-NM-RE	Post Mount Handicap Stall Sign	
	E.8	TC-P-ADA-NM-V-RE	Post Mount Handicap Stall Sign - Van Accessible	
	E.9	TC-P-DOT-DNE-RE	Post Mount Do Not Enter Sign - DOT Standard	
	E.10	TC-P-DOT-DNE-RE	Post Mount Do Not Enter Sign - DOT Standard	
	E.11	D-7.6-RE	Non-Illuminated Directional Monument	
	E.24	TC-P-MOTORCYCLE	Post Mount Motorcycle Stall Sign	
	E.25	TC-P-MOTORCYCLE	Post Mount Motorcycle Stall Sign	
	E.26	COMING SOON	Temporary Construction Site Sign	
	E.27	COMING SOON	Temporary Construction Site Sign	
Total Proposed Sq Ft				188.8



SITE PLAN SCALE: 1" = 30'-0"



Signitech
4444 Federal Blvd. San Diego CA 92102
Phone: (619) 527-6100 Fax: (619) 527-6111
signitech.com



JP Morgan Chase Bank
#38200P367110
Eubank Blvd NE and Chico Rd NE
340 Eubank Blvd NE
Albuquerque, NM 87123

Initial Date: 08/11/20
Salesperson: Arthur Navarro
Coordinator: Lorena Leon
Designer: Thomson
Scale: As noted

CUSTOMER APPROVAL

Customer Signature _____ Date _____
COPY, COLORS & SIZES

Signitech does NOT provide primary electrical to sign location - **RESPONSIBILITY OF OTHERS!**

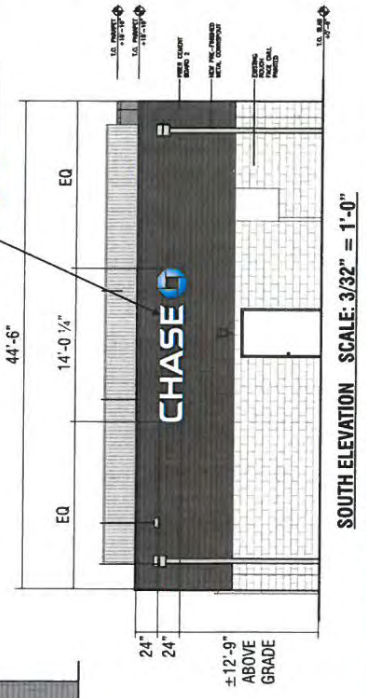
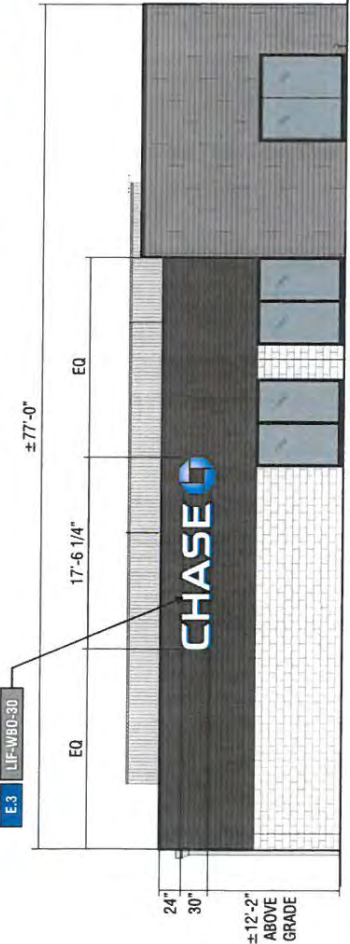
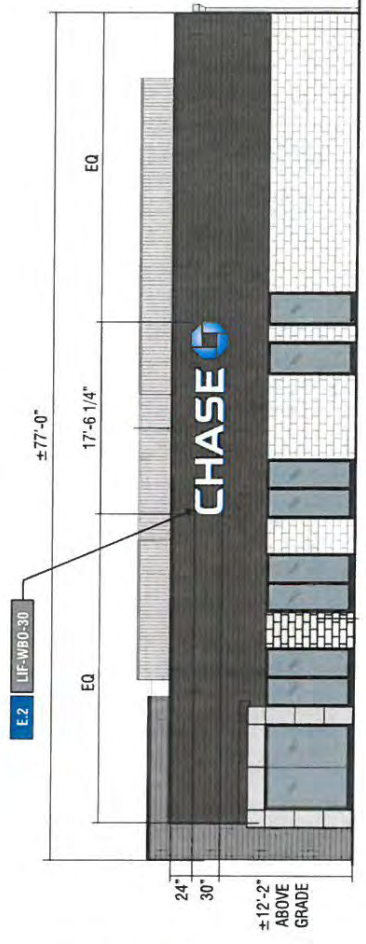
Customer Signature _____ Date _____
This design is the exclusive property of Signitech and cannot be reproduced in whole or in part, copied or used for any other project without approval.

Drawing Number: 20-01034
Project ID: CHASE_38200P367110_1
Revision: R11 - 08.15.20

Sign Legend / Site Plan

Page: 2 **DRC Page 2**

SIGNAGE OVERVIEW



Signitech
 4444 Federal Blvd., San Diego, CA 92102
 Phone: (619) 527-5100 / Fax: (619) 527-5111
 signitech.com



JP Morgan Chase Bank
 #38200P367110

Eubank Blvd NE and Chico Rd NE
 340 Eubank Blvd NE
 Albuquerque, NM 87123

Initial Date: 08/11/20
 Salesperson: Arthur Navarro
 Coordinator: Lorena Leon
 Designer: Thomson
 Scale: As noted

CUSTOMER APPROVAL

Customer Signature _____ Date _____
 COPY, COLORS & SIZES

Signitech does NOT provide primary electrical to sign location - RESPONSIBILITY OF OTHERS!

Customer Signature _____ Date _____
 This design is the exclusive property of Signitech and cannot be reproduced in whole or in part without their prior written approval.

Drawing Number: 20-01034
 Project ID: CHASE_38200P367110_1
 Revision: R11 - 09.15.20

Exterior Elevations



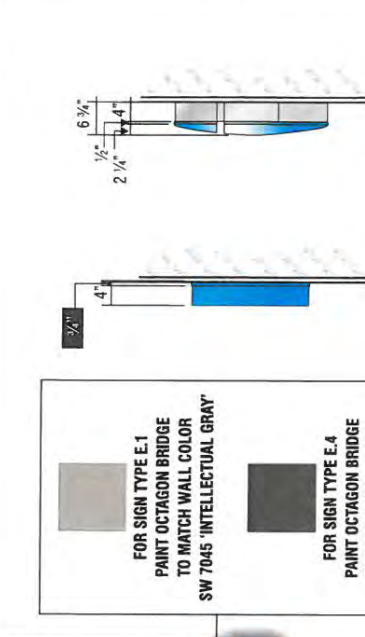
JP Morgan Chase Bank
#38200P367110
 Eubank Blvd NE and Chico Rd NE
 340 Eubank Blvd NE
 Albuquerque, NM 87123

Initial Date: 08/11/20
 Salesperson: Arthur Navarro
 Coordinator: Lorena Leon
 Designer: Thomson
 Scale: As noted

CUSTOMER APPROVAL
 Customer Signature _____ Date _____
COPY, COLORS & SIZES

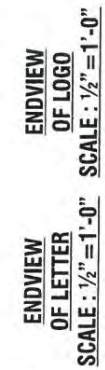
Signtech does NOT provide primary electrical to sign location - **RESPONSIBILITY OF OTHERS!**
 Customer Signature _____ Date _____
 This design is the exclusive property of Signtech and cannot be reproduced in whole or in part, without their prior written approval.

Drawing Number: 20-01034
 Project ID: CHASE_38200P367110_1
 Revision: R11 - 09.15.20



FOR SIGN TYPE E.1
 PAINT OCTAGON BRIDGE
 TO MATCH WALL COLOR
 SW 7045 'INTELLECTUAL GRAY'

FOR SIGN TYPE E.4
 PAINT OCTAGON BRIDGE
 TO MATCH WALL COLOR
 SW 7020 'BLACK FOX'



ENDVIEW OF LETTER
 SCALE: 1/2" = 1'-0"

ENDVIEW OF LOGO
 SCALE: 1/2" = 1'-0"

E.1 E.4
FOR SIGN TYPE E.4 CONFIRM W/ CONSTRUCTION DRAWINGS PRIOR TO FABRICATION IF BTWR WILL BE NECESSARY.

SIGN TYPE LIF-WB0-24

MANUFACTURE AND INSTALL TWO (2) SETS OF ILLUMINATED LETTERS & LOGO w/ PLEX FACES & RETURNS

- LETTERS:**
 FACE: 17" ARISTECH #7328 P-95 WHITE PLEX (MATTE SIDE TO BE 1ST SURFACE) CHEM WELDED TO RETURNS
 RETURNS: 0.118" x 4" DEEP ARISTECH #6046 BLUE WITH 3635-70 DIFFUSER VINYL ON 2ND (INTERIOR) SURFACE.
 BACKS: .080" ALUM BACK WITH 3/4" x .080" OUTSIDE ALUM RETURN AND 1/2" x 1/8" ALUM ANGLE CLIPS ON INTERIOR OF LETTER FOR FACE ATTACHMENT
 PAINT: EXTERIOR PAINT MATTHEWS "CHASE MICKEL" #MP-19891 GLOSS FINISH (60-70 UNITS) AND INTERIOR PAINTED SPRAY-LAT STAR BRITE WHITE LIGHT ENHANCEMENT PAINT.
 ILLUMINATION: SLOAN PRISM 7100K #701269-7WSJ1-MB WHITE LEDS AND SLOAN POWER SUPPLY REQUIRED FOR PROPER EVEN ILLUMINATION.
- LOGO:**
 BACKS: .080" ALUM BACK WITH STACK WELDED 4" x .080" ALUM RETURNS.
 LOGO CAN FACE: .080" ALUM BRIDGE ELEMENTS WELDED TO INSIDE & OUTSIDE RETURNS
 PLEX FACE: .118" THERMO FORMED ARISTECH #6046 BLUE LOGO ELEMENTS CHEM WELDED TO 3/4" CLEAR PLEX 2ND SURFACE FACES.
 PAINT: EXTERIOR PAINT MATTHEWS "CHASE MICKEL" #MP-19891 GLOSS FINISH AND INTERIOR PAINTED SPRAY-LAT STAR BRITE WHITE LIGHT ENHANCEMENT PAINT
 ILLUMINATION: SLOAN PRISM #701269-BLSJ1-MB BLUE LEDS AND SLOAN POWER SUPPLY AS REQUIRED FOR PROPER EVEN ILLUMINATION

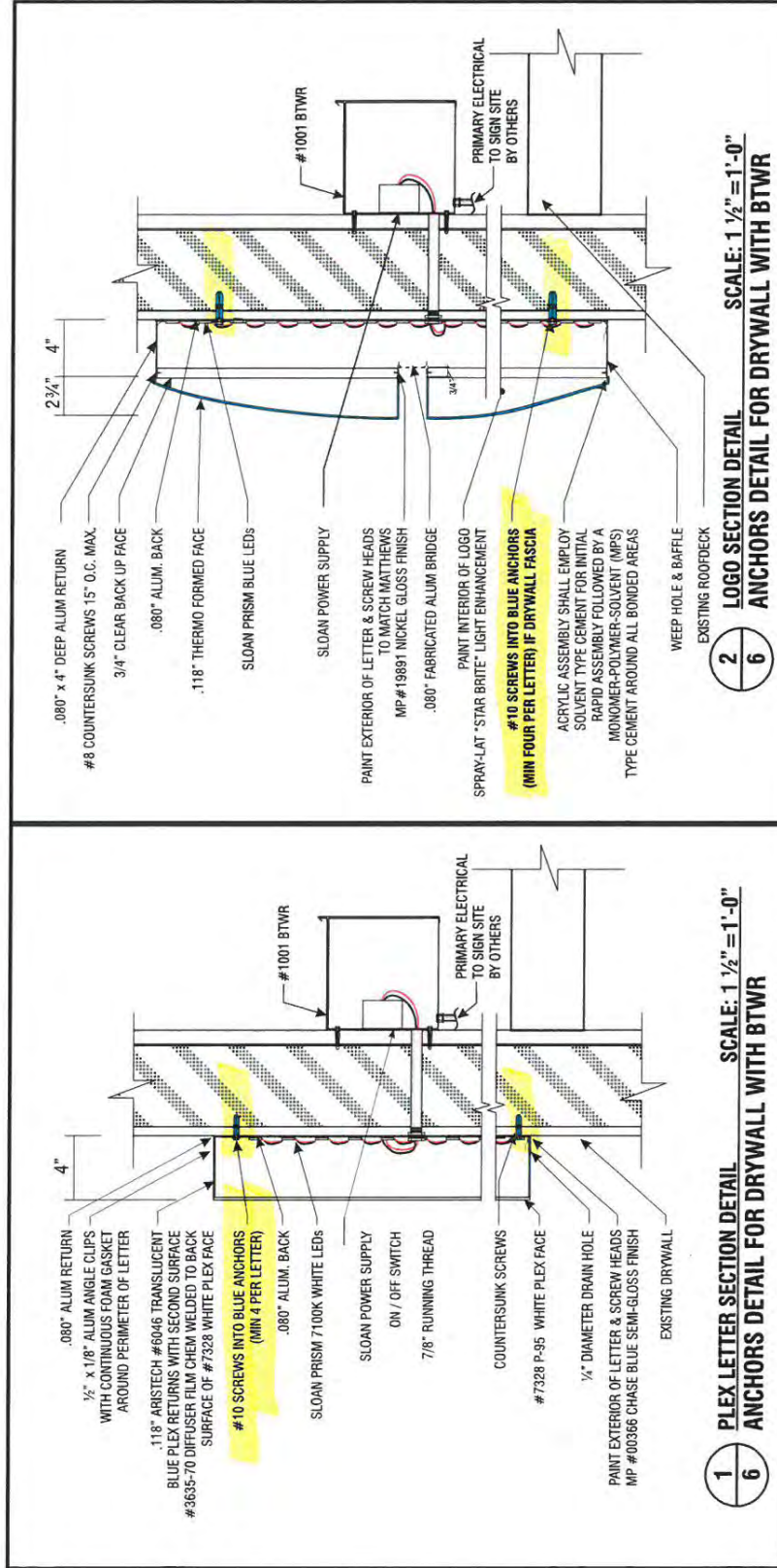


3D VIEW OF OCTAGON

ALL EXPOSED FASTENER HEADS SHALL BE PAINTED TO MATCH THE EXTERIOR SURFACE FINISH

ELECTRICAL REQUIREMENTS FOR LED ILLUMINATION
 AS required by standard #2161, Signtech Electrical Advertising, Inc., exclusively uses secondary Ground fault-interrupted (GFI) transformers.
 Each Sign MUST have:
 - Three wires - Line, Ground, and Neutral.
 - Wire Size - Min 12 GA THHN Copper Wire.
 NOTE: The gauge of the wire is dictated by the length of the run & amperage as per NEC Article 600.
 - The ground wire must be continuous & go from the sign to the panelboard ground bus.

**ATTACHMENT METHOD TO BE VERIFIED BY INSTALLER
IN THE FIELD DEPENDING ON WALL TYPE AND ACCESS.**



**VERIFY WALL MATERIAL
VERIFY IF EXPOSED RACEWAY OR BEHIND THE WALL RACEWAY IS NEEDED PRIOR TO FABRICATION FOR SIGN TYPE E.4**



Signitech
4444 Federal Blvd. San Diego CA 92102
Phone: (619) 527-6100 / Fax: (619) 527-6111
signitech.com



JP Morgan Chase Bank
#38200P367110

Eubank Blvd NE and Chico Rd NE
340 Eubank Blvd NE
Albuquerque, NM 87123

Initial Date: 08/11/20

Salesperson: Arthur Navarro

Coordinator: Lorena Leon

Designer: THORNTON

Scale: As Noted

CUSTOMER APPROVAL

Customer Signature _____ Date _____
COPY COLORS & SIZES

Signitech does NOT provide primary electrical to sign location -
RESPONSIBILITY OF OTHERS!

Customer Signature _____ Date _____
This design is the exclusive property of Signitech and cannot be reproduced in whole or in part without their prior written approval.

Drawing Number: 20-01034

Project ID: CHASE_38200P367110_1

Revision: R11 - 09.15.20



JP Morgan Chase Bank
#38200P367110
 Eubank Blvd NE and Chico Rd NE
 340 Eubank Blvd NE
 Albuquerque, NM 87123

Initial Date: 08/11/20
 Salesperson: Arthur Navarro
 Coordinator: Lorena Leon
 Designer: Thomson
 Scale: As noted

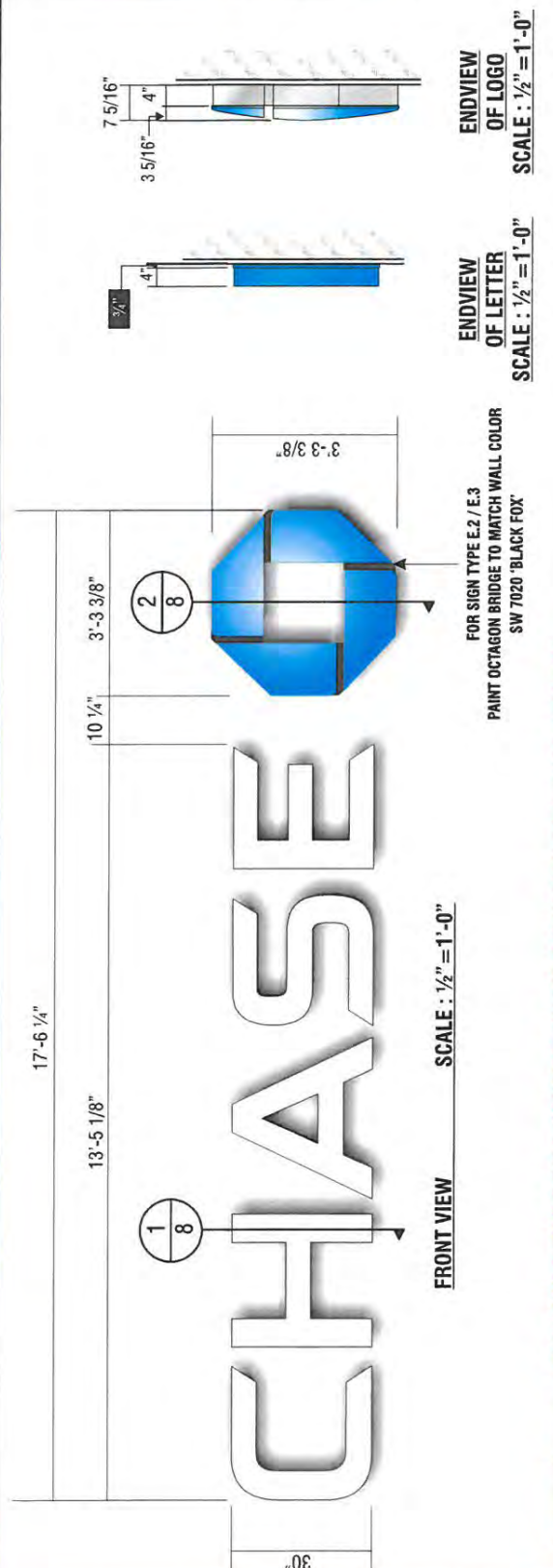
CUSTOMER APPROVAL

Customer Signature _____ Date _____
COPY, COLORS & SIZES

Signitech does NOT provide primary electrical to sign location -
RESPONSIBILITY OF OTHERS!

Customer Signature _____ Date _____
 This design is the exclusive property of Signitech and cannot be reproduced in whole or in part, without their prior written approval.

Drawing Number: 20-01034
 Project ID: CHASE_38200P367110_1
 Revision: R11 - 09.15.20



E.2 E.3 **FOR SIGN TYPES E.2/E.3 CONFIRM W/ CONSTRUCTION DRAWINGS PRIOR TO FABRICATION IF BTWR WILL BE NECESSARY.**

SIGN TYPE LIF-WB0-30

MANUFACTURE AND INSTALL TWO (2) SETS OF INTERNALLY-ILLUMINATED CHANNEL LETTERS

LETTERS:
 FACE: 177" ARISTECH #7328 P-95 WHITE PLEX (MATTIE SIDE TO BE 1ST SURFACE) CHEM WELDED TO RETURNS
 RETURNS: 0.118" x 4" DEEP ARISTECH #6046 BLUE WITH 3635-70 DIFFUSER VINYL ON 2ND (INTERIOR) SURFACE.
 BACKS: .080" ALUM BACK WITH 1/2" x .080" OUTSIDE ALUM RETURN AND 1/2" x 1/8" ALUM ANGLE CLIPS ON INTERIOR OF LETTER FOR FACE ATTACHMENT
 PAINT: EXTERIOR PAINT MATTHEWS MP-00366 CHASE BLUE SEMI-GLOSS FINISH (60-70 UNITS) AND INTERIOR SPRAY-LAT STAR BRITTE WHITE LIGHT ENHANCEMENT PAINT.
 ILLUMINATION: SLOAN PRISM 7100K #701269-7WSJ1-MB WHITE LEDS AND SLOAN POWER SUPPLY REQUIRED FOR PROPER EVEN ILLUMINATION.

LOGO:
 BACKS: .080" ALUM BACK WITH STACK WELDED 4" x .080" ALUM RETURNS.
 LOGO CAN FACE: .080" ALUM BRIDGE ELEMENTS WELDED TO INSIDE & OUTSIDE RETURNS
 PLEX FACE: .118" THERMO FORMED ARISTECH #6046 BLUE LOGO ELEMENTS CHEM WELDED TO 3/4" CLEAR PLEX 2ND SURFACE FACES.
 PAINT: EXTERIOR PAINT MATTHEWS "CHASE NICKEL" #AMP-19891 GLOSS FINISH AND INTERIOR PAINT SPRAY-LAT STAR BRITTE WHITE LIGHT ENHANCEMENT PAINT
 ILLUMINATION: SLOAN PRISM #701269-BLSJ1-MB BLUE LEDS AND SLOAN POWER SUPPLY AS REQUIRED FOR PROPER EVEN ILLUMINATION

ELECTRICAL REQUIREMENTS FOR LED ILLUMINATION
 As required by standard #2151, Signitech Electrical Advertising, Inc. exclusively uses secondary Ground fault-interrupted (GFI) transformers.
 Each Sign MUST have - A dedicated branch circuit
 - Three wires - Line, Ground, and Neutral.
 - Wire Size - Min 12 GA THHN Copper Wire.
 NOTE: The gauge of the wire is dictated by the length of the run, & ampacage as per NEC Article 600.
 - The ground wire must be continuous & go from the sign to the parabeard ground bus.



3D VIEW OF OCTAGON

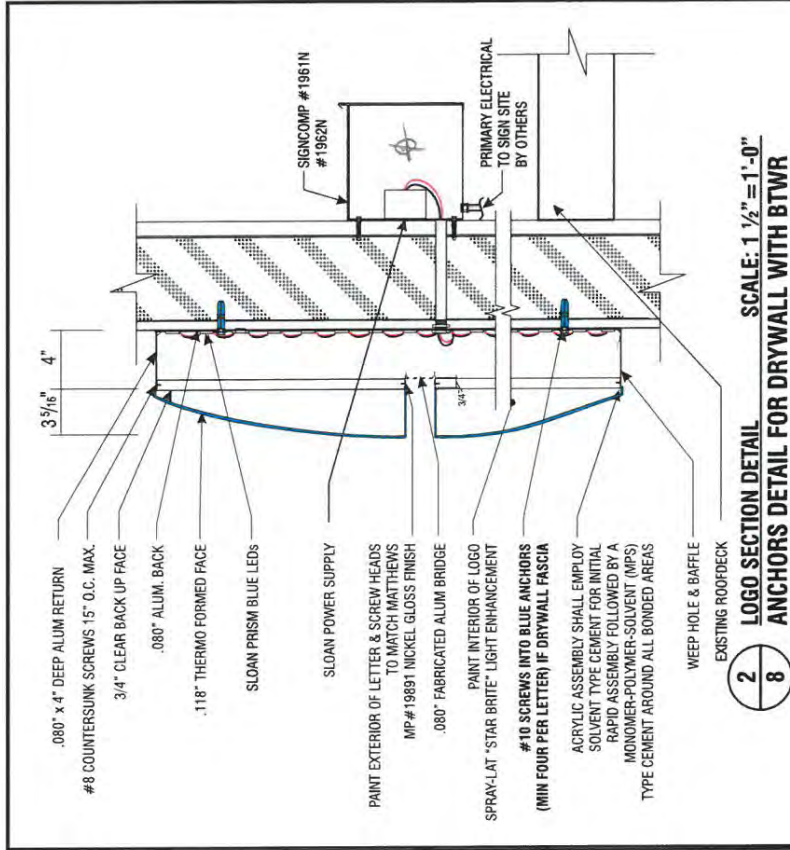
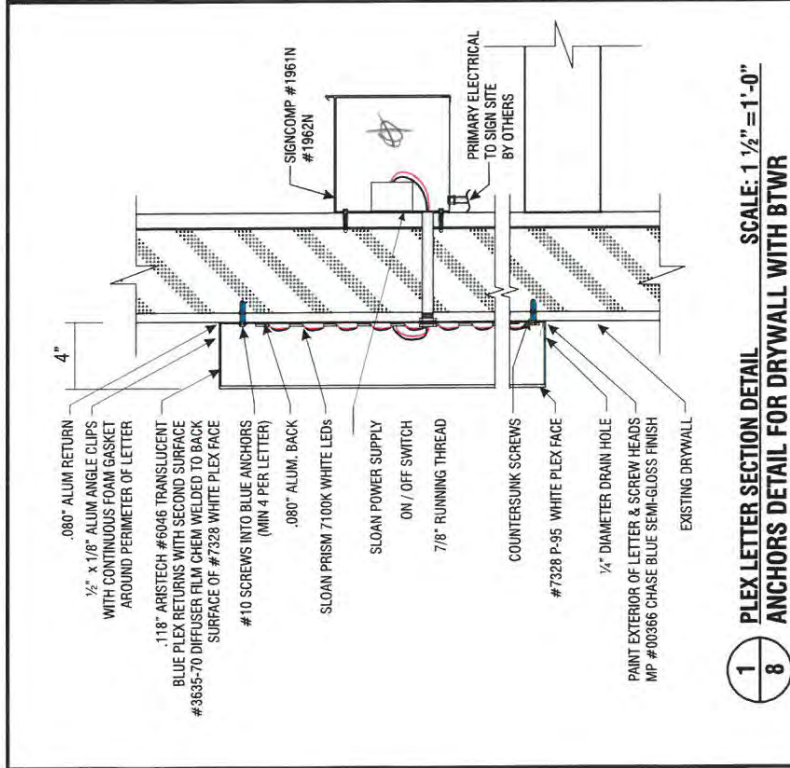
ENDVIEW OF LETTER
 SCALE: 1/2" = 1'-0"

ENDVIEW OF LOGO
 SCALE: 1/2" = 1'-0"

FRONT VIEW
 SCALE: 1/2" = 1'-0"

FOR SIGN TYPE E.2 / E.3
 PAINT OCTAGON BRIDGE TO MATCH WALL COLOR
 SW 7020 'BLACK FOX'

**ATTACHMENT METHOD TO BE VERIFIED BY INSTALLER
IN THE FIELD DEPENDING ON WALL TYPE AND ACCESS.**



**VERIFY WALL MATERIAL
VERIFY IF EXPOSED RACEWAY OR BEHIND THE WALL RACEWAY IS NEEDED PRIOR TO FABRICATION**



Signtech
 4444 Federal Blvd., San Diego CA 92102
 Phone: (619) 527-6100 / Fax: (619) 527-6111
 signtech.com



**JP Morgan Chase Bank
 #38200P367110**

Eubank Blvd NE and Chico Rd NE
 340 Eubank Blvd NE
 Albuquerque, NM 87123

Initial Date: 08/11/20
 Salesperson: Arthur Navarro
 Coordinator: Lorena Leon
 Designer: Thompson
 Scale: As noted

CUSTOMER APPROVAL

Customer Signature _____ Date _____
 COPY, COLORS & SIZES

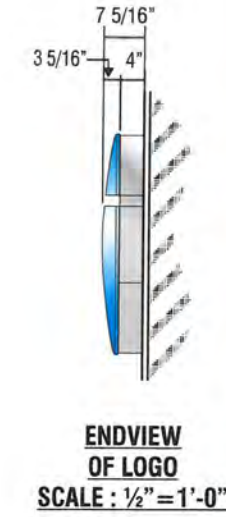
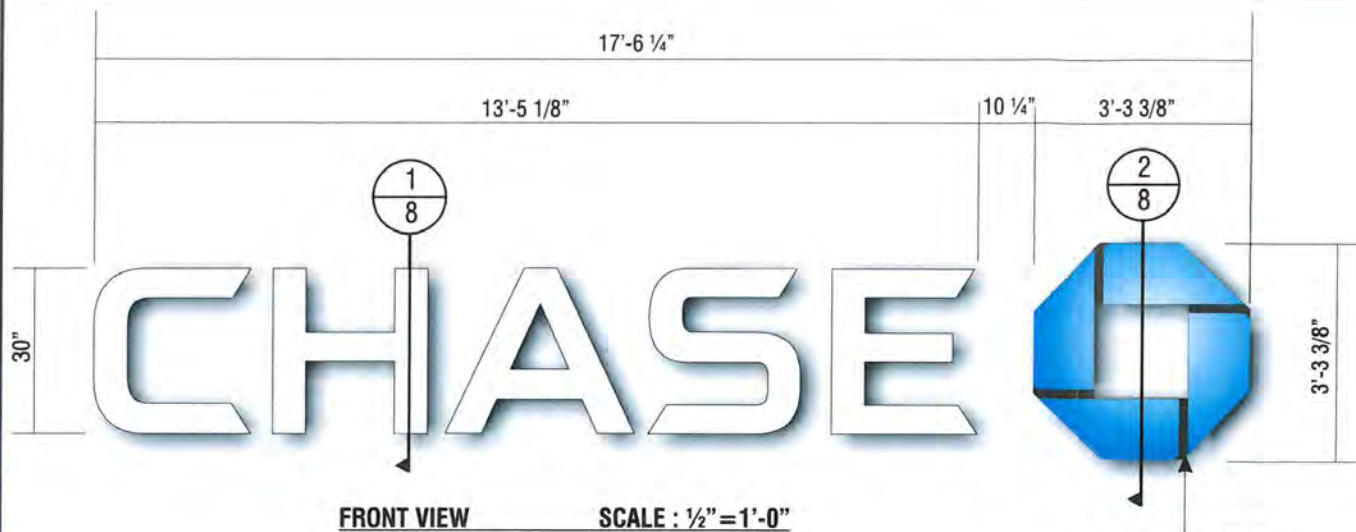
Signtech does NOT provide primary electrical to sign location - RESPONSIBILITY OF OTHERS!

Customer Signature _____ Date _____
 This design is the exclusive property of Signtech and shall not be reproduced, copied, or used without their prior written approval.

Drawing Number: 20-01034

Project ID: CHASE_38200P367110_1

Revision: R11 - 09.15.20



E.2 **E.3** **FOR SIGN TYPES E.2/E.3 CONFIRM W/ CONSTRUCTION DRAWINGS PRIOR TO FABRICATION IF BTWR WILL BE NECESSARY.**

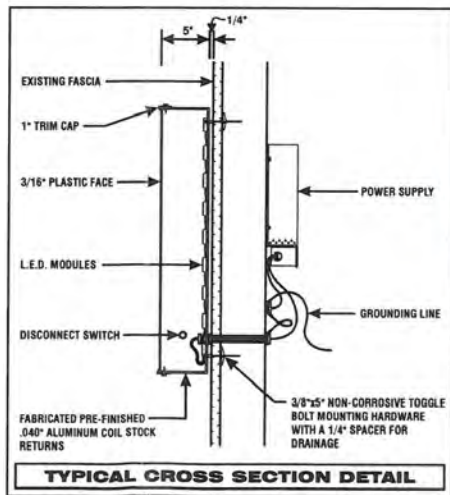
SIGN TYPE LIF-WBO-30

MANUFACTURE AND INSTALL TWO (2) SETS OF INTERNALLY-ILLUMINATED CHANNEL LETTERS

LETTERS:
FACE: .177" ARISTECH #7328 P-95 WHITE PLEX (MATTE SIDE TO BE 1ST SURFACE) CHEM WELDED TO RETURNS
RETURNS: 0.118" x 4" DEEP ARISTECH #6046 BLUE WITH 3635-70 DIFFUSER VINYL ON 2ND (INTERIOR) SURFACE.
BACKS: .080" ALUM BACK WITH 3/4" x .080" OUTSIDE ALUM RETURN AND 1/2" x 1/8" ALUM ANGLE CLIPS ON INTERIOR OF LETTER FOR FACE ATTACHMENT
PAINT: EXTERIOR PAINTED MATTHEWS MP-00366 CHASE BLUE SEMI-GLOSS FINISH (60-70 UNITS) AND INTERIOR PAINTED SPRAY-LAT STAR BRITE WHITE LIGHT ENHANCEMENT PAINT.
ILLUMINATION: SLOAN PRISM 7100K #701269-7WSJ1-MB WHITE LEDs AND SLOAN POWER SUPPLY REQUIRED FOR PROPER EVEN ILLUMINATION.

LOGO:
BACKS: .080" ALUM BACK WITH STACK WELDED 4" x .080" ALUM RETURNS.
LOGO CAN FACE: .080" ALUM BRIDGE ELEMENTS WELDED TO INSIDE & OUTSIDE RETURNS
PLEX FACE: .118" THERMO FORMED ARISTECH #6046 BLUE LOGO ELEMENTS CHEM WELDED TO 3/4" CLEAR PLEX 2ND SURFACE FACES.
PAINT: EXTERIOR PAINT MATTHEWS "CHASE NICKEL" #MP-19891 GLOSS FINISH AND INTERIOR PAINTED SPRAY-LAT STAR BRITE WHITE LIGHT ENHANCEMENT PAINT.
ILLUMINATION: SLOAN PRISM #701269-BLSJ1-MB BLUE LEDs AND SLOAN POWER SUPPLY AS REQUIRED FOR PROPER EVEN ILLUMINATION.

ELECTRICAL REQUIREMENTS FOR LED ILLUMINATION
 As required by standard #2161, Signtech Electrical Advertising, Inc., exclusively uses secondary Ground fault-Interrupted (GFI) transformers.
 Each Sign MUST have: - A dedicated branch circuit
 - Three wires : Line, Ground, and Neutral.
 - Wire Size : Min 12 GA THHN Copper Wire.
 NOTE: The gauge of the wire is dictated by the length of the run & amperage as per NEC Article 600.
 - The ground wire must be continuous & go from the sign to the panelboard ground bus.



3D VIEW OF OCTAGON

Signtech™
 4444 Federal Blvd. San Diego CA 92102
 Phone: (619) 527-6100 / Fax: (619) 527-6111
 signtech.com

MEMBER OF
 WSA ISEA CESA
 INTERNATIONAL SOCIETY OF ELECTRICAL ADVERTISING

JP Morgan Chase Bank
 #38200P367110

Eubank Blvd NE and Chico Rd NE
 340 Eubank Blvd NE
 Albuquerque, NM 87123

Initial Date: 08/11/20
 Salesperson: Arthur Navarro
 Coordinator: Lorena Leon
 Designer: TThomsen
 Scale: As noted

CUSTOMER APPROVAL

Customer Signature _____ Date _____
COPY, COLORS & SIZES

Signtech does NOT provide primary electrical to sign location - **RESPONSIBILITY OF OTHERS!**

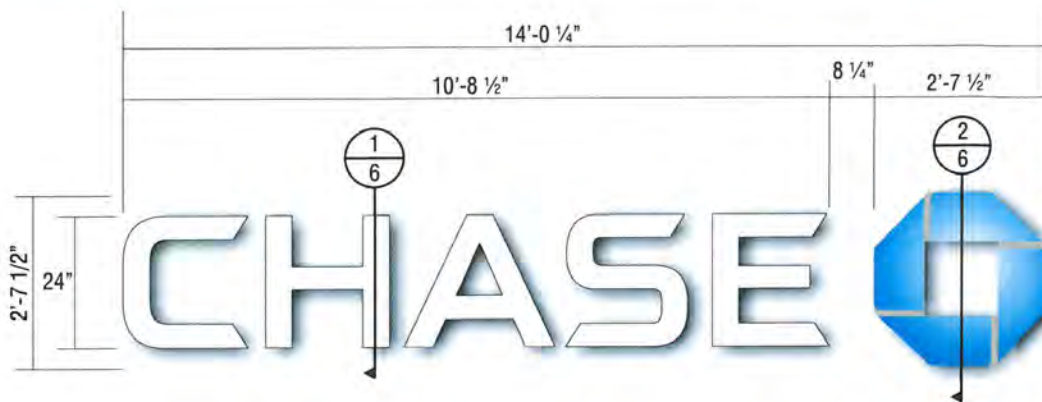
Customer Signature _____ Date _____

This design is the exclusive property of Signtech and cannot be reproduced in whole or in part, without their prior written approval.

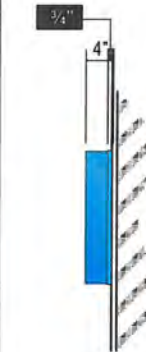
Drawing Number: _____

Project ID: _____

Revision: R11 - 09.15.20



FRONT VIEW SCALE : 1/2" = 1'-0"



ENDVIEW OF LETTER SCALE : 1/2" = 1'-0"



ENDVIEW OF LOGO SCALE : 1/2" = 1'-0"

E.1	E.4
SIGN TYPE LIF-WB0-24	

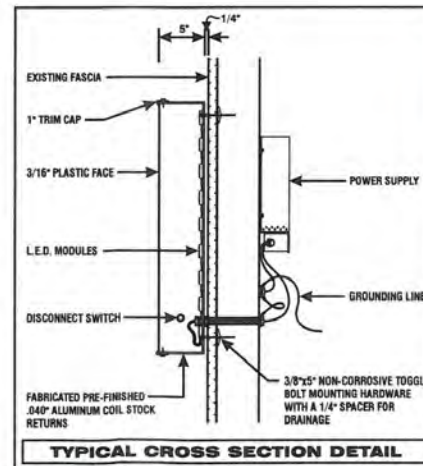
FOR SIGN TYPE E.4 CONFIRM W/ CONSTRUCTION DRAWINGS PRIOR TO FABRICATION IF BTWR WILL BE NECESSARY.

MANUFACTURE AND INSTALL TWO (2) SETS OF ILLUMINATED LETTERS & LOGO w/PLEX FACES & RETURNS

LETTERS:
FACE: .177" ARISTECH #7328 P-95 WHITE PLEX (MATTE SIDE TO BE 1ST SURFACE) CHEM WELDED TO RETURNS
RETURNS: 0.118" x 4" DEEP ARISTECH #6046 BLUE WITH 3635-70 DIFFUSER VINYL ON 2ND (INTERIOR) SURFACE.
BACKS: .080" ALUM BACK WITH 3/4" x .080" OUTSIDE ALUM RETURN AND 1/2" x 1/8" ALUM ANGLE CLIPS ON INTERIOR OF LETTER FOR FACE ATTACHMENT
PAINT: EXTERIOR PAINTED MATTHEWS MP-00366 CHASE BLUE SEMI-GLOSS FINISH (60-70 UNITS) AND INTERIOR PAINTED SPRAY-LAT STAR BRITE WHITE LIGHT ENHANCEMENT PAINT.
ILLUMINATION: SLOAN PRISM 7100K #701269-7WSJ1-MB WHITE LEDs AND SLOAN POWER SUPPLY REQUIRED FOR PROPER EVEN ILLUMINATION.

LOGO:
BACKS: .080" ALUM BACK WITH STACK WELDED 4" x .080" ALUM RETURNS.
LOGO CAN FACE: .080" ALUM BRIDGE ELEMENTS WELDED TO INSIDE & OUTSIDE RETURNS
PLEX FACE: .118" THERMO FORMED ARISTECH #6046 BLUE LOGO ELEMENTS CHEM WELDED TO 3/4" CLEAR PLEX 2ND SURFACE FACES.
PAINT: EXTERIOR PAINT MATTHEWS "CHASE NICKEL" #MP-19891 GLOSS FINISH AND INTERIOR PAINTED SPRAY-LAT STAR BRITE WHITE LIGHT ENHANCEMENT PAINT.
ILLUMINATION: SLOAN PRISM #701269-BLSJ1-MB BLUE LEDs AND SLOAN POWER SUPPLY AS REQUIRED FOR PROPER EVEN ILLUMINATION

ELECTRICAL REQUIREMENTS FOR LED ILLUMINATION
 As required by standard #2161, Signtech Electrical Advertising, Inc., exclusively uses secondary Ground fault-Interrupted (GFI) transformers.
 Each Sign MUST have: - A dedicated branch circuit
 - Three wires: Line, Ground, and Neutral.
 - Wire Size: Min 12 GA THHN Copper Wire.
 NOTE: The gauge of the wire is dictated by the length of the run & amperage as per NEC Article 600.
 - The ground wire must be continuous & go from the sign to the panelboard ground bus.



3D VIEW OF OCTAGON

ALL EXPOSED FASTENER HEADS SHALL BE PAINTED TO MATCH THE EXTERIOR SURFACE FINISH



Signtech™

4444 Federal Blvd. San Diego CA 92102
 Phone: (619) 527-6100 / Fax: (619) 527-6111
 signtech.com



JP Morgan Chase Bank #38200P367110

Eubank Blvd NE and Chico Rd NE
 340 Eubank Blvd NE
 Albuquerque, NM 87123

Initial Date: 08/11/20
 Salesperson: Arthur Navarro
 Coordinator: Lorena Leon
 Designer: TThomsen
 Scale: As noted

CUSTOMER APPROVAL

Customer Signature _____ Date _____
COPY, COLORS & SIZES

Signtech does NOT provide primary electrical to sign location - **RESPONSIBILITY OF OTHERS!**

Customer Signature _____ Date _____
 This design is the exclusive property of Signtech and cannot be reproduced in whole or in part, without their prior written approval.

Drawing Number: _____
 Project ID: _____
 Revision: R11 - 09.15.20