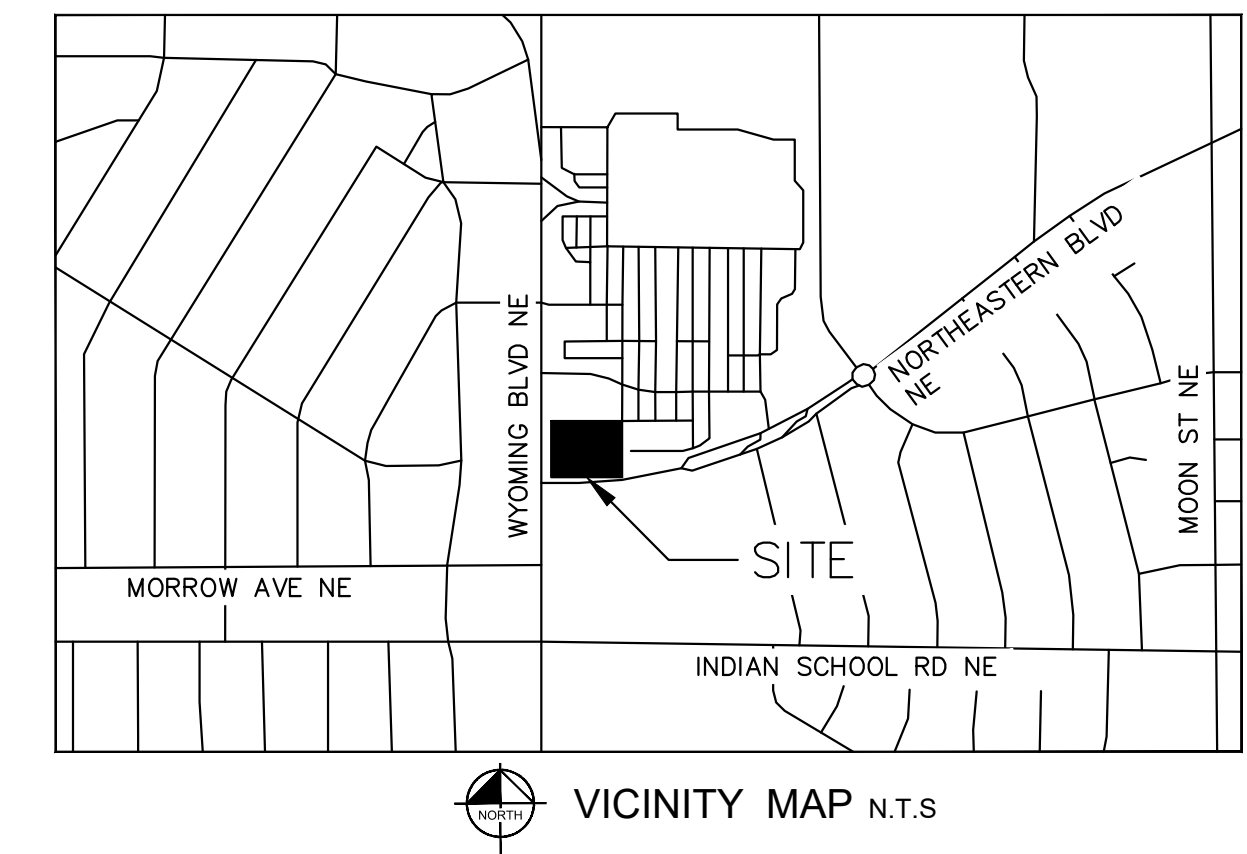
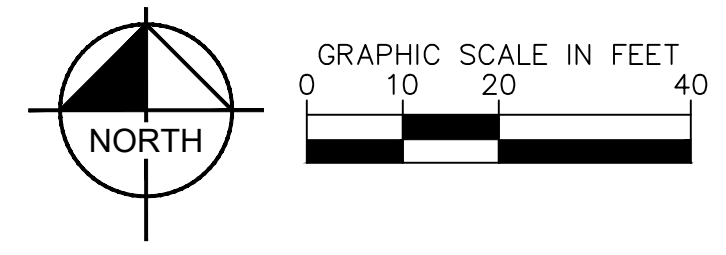
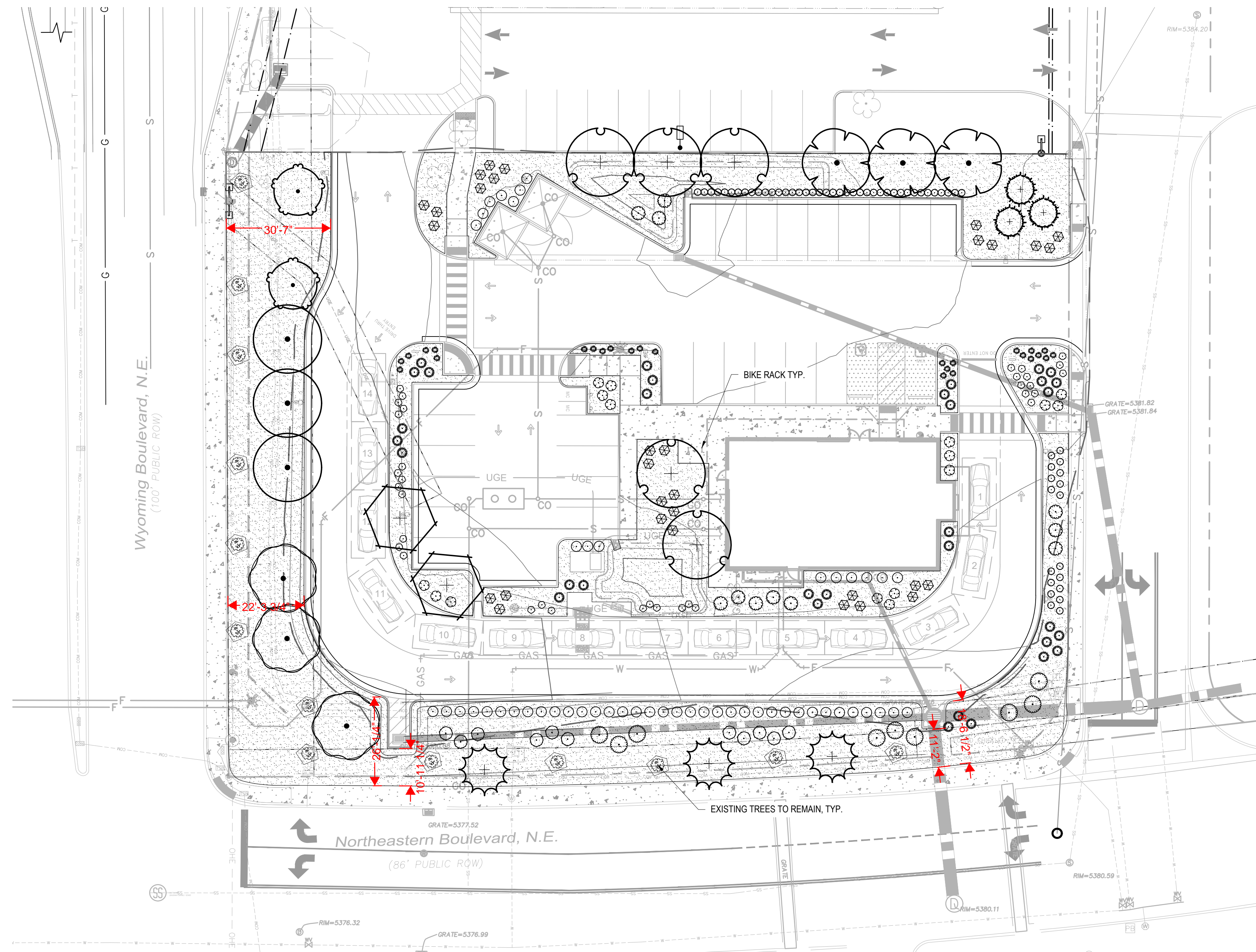


This document, together with the concepts and designs presented herein, is an instrument of service, as an instrument of service, intended only for the specific purpose and client for which it was prepared. Reuse of and improper reliance on this document without written authorization and adaptation by Kimley-Horn and Associates, Inc. shall be without liability to Kimley-Horn and Associates, Inc.



PLANT SCHEDULE

TREES	CODE	QTY	BOTANICAL NAME	COMMON NAME	CONT	CAL	SIZE
	AU	3	AMELANCHIER UTAHENSIS	UTAH SERVICEBERRY	B & B	2" CAL MIN	12' HT MIN
	CO	2	CERCIS OCCIDENTALIS	WESTERN REDBUD	B & B	2" CAL MIN	12' HT MIN
	CL	2	CHILOPSIS LINEARIS	DESERT WILLOW	B & B	2" CAL MIN	12' HT MIN
	JS	3	JUNIPERUS MONOSPERMA	ONE SEED JUNIPER	B & B		6' HT MIN
	PO	3	PINUS NIGRA 'OREGON GREEN'	OREGON GREEN AUSTRIAN PINE	B & B		6' HT MIN
	PM	3	PROSOPIS GLANDULOSA 'MAVERICK' TM	HONEY MESQUITE	B & B	2" CAL MIN	12' HT MIN
	PA2	3	PRUNUS AMERICANA	WILD PLUM	B & B	2" CAL MIN	12' HT MIN
	PC	5	PRUNUS CERASIFERA	PURPLE-LEAF PLUM	B & B	2" CAL MIN	12' HT MIN
SHRUBS	CODE	QTY	BOTANICAL NAME	COMMON NAME	CONT	SPACING	SIZE
	BW	52	BUXUS MICROPHYLLA JAPONICA 'WINTER GEM'	WINTER GEM JAPANESE BOXWOOD	5 GAL	SEE PLAN	18"-24" HT. MIN.
	CA2	33	CALAMAGROSTIS X ACUTIFLORA	FEATHER REED GRASS	1 GAL	SEE PLAN	18"-24" HT. MIN.
	CC	11	CARPENTERIA CALIFORNICA	BUSH ANEMONE	5 GAL	SEE PLAN	18" HT MIN
	CD	9	COTONEASTER DIVARICATUS	SPREADING COTONEASTER	5 GAL	SEE PLAN	18"-24" HT. MIN.
	CS	11	CYTISUS PURGANS 'SPANISH GOLD'	SPANISH GOLD BROOM	5 GAL	SEE PLAN	18"-24" HT. MIN.
	HO	26	HEMEROCALLIS X 'STELLA DE ORO'	STELLA DE ORO DAYLILY	1 GAL	SEE PLAN	12" HT MIN
	NW	59	NEPETA X FAASSENII 'WALKER'S LOW'	WALKER'S LOW CATMINT	1 GAL	SEE PLAN	18"-24" HT. MIN.
	PA	13	PENSTEMON AMBIGUUS	GILIA BEARDTONGUE	5 GAL	SEE PLAN	12" HT MIN
	PB	28	POTENTILLA FRUTICOSA 'FARGO'	DAKOTA SUNSPOT POTENTILLA	5 GAL	SEE PLAN	18"-24" HT. MIN.
	RH	37	RUDBECKIA HIRTA	BLACK-EYED SUSAN	5 GAL	SEE PLAN	12" HT MIN
GROUND COVERS	CODE	QTY	BOTANICAL NAME	COMMON NAME	CONT	SIZE	SPACING
	SG	18,144 SF	GREY BREEZE CRUSHER FINES	GREY BREEZE CRUSHER FINES	FLAT		

STARBUCKS
 CITY: Albuquerque
 COUNTY: MX-M
 ZONE: MX-M

STREET FRONTAGE LANDSCAPING				
STREET NAME	FRONTAGE LENGTH (LF)	WIDTH (FT) REQ./PROV.	TREE / LF REQ.	NO. TREES REQ./PROV.
Wyoming Blvd, N.E.	183	20/23	1/25	7/7*
Northeastern Blvd, N.E.	249	20/24	1/25	9/9*

PARKING LOT LANDSCAPE						
PARKING LOT AREA	LANDSCAPE % REQ.	LANDSCAPE AREA REQ./PROV.	TREE REQ./SPACE	NO. TREES REQ. / PROV.	BUFFER REQ.	SIDE LOT REQ.
4,415	441 (10%)	441 (10%)/ 2,258 (51%)	1/10	3/3	MASONRY WALL OR CONTINUOUS LINE OF SHRUBS 3' HT AND 10' W	2 TREES AND 6 SHRUBS PER 25 LF

PEDESTRIAN WALKWAYS		
LENGTH OF PEDESTRIAN WALKWAYS (LF)	TREES / LF REQ.	NO. TREES REQ./PROV.
264	1/25	11/11

SITE LANDSCAPE				
TOTAL SITE AREA (SF)	SITE LANDSCAPE AREA REQ./PROV. (SF)	LIVE VEGETATION COVERAGE REQ./PROV. (SF)	GROUND LEVEL PLANTS AS VEGETATION COVERAGE REQ./PROV. (SF)	MAXIMUM TURF COVERAGE (SF) REQ./PROV.
44,412	6,662 (15%)/18,108 (40%)	4,997 (75%)/ 6,747 (101%)	1,249 (25%)/ 1,802 (36%)	666 (10%)/0 (0%)

NOTES
 * 6 EXISTING TREES ON BOTH BLVD. TO COUNT TOWARDS STREET FRONTAGE REQUIREMENT
 * PER 5-6 (C)(4)(h)- 1 TREE PER 25 LF OF PEDESTRIAN WALKWAY BUT DUE TO CONFLICTS TREES HAVE BEEN PLACED ELSEWHERE THROUGHOUT PROPERTY

NO.	REVISIONS	DATE	BY



KHA PROJECT	
DATE	SCALE
	AS SHOWN
DESIGNED BY	DRAWN BY
CHECKED BY	

LANDSCAPE PLAN

STARBUCKS COFFEE COMPANY
 2401 UTAH AVENUE SOUTH
 SEATTLE, WASHINGTON 98134
 (206) 318-1575



SHEET NUMBER
L1.0

