

**ALBUQUERQUE FIRE MARSHAL'S
DIVISION OFFICE PLANS
CHECKING DIVISION
PERMIT
PERMIT NUMBER: FP 21-005153
APPROVED DATE: 11/15/24
APPROVED**

THESE CONSTRUCTION DOCUMENTS WERE REVIEWED AND APPROVED BY THE ALBUQUERQUE FIRE MARSHAL'S OFFICE IN ACCORDANCE WITH THE CITY ORDINANCE, THE INTERNATIONAL FIRE CODE, AND NFPA STANDARDS. THIS PERMIT IS VALID FOR 180 DAYS. FINAL INSPECTION IS REQUIRED.

2200 VISTA ORIENTE N.W.,
ALBUQUERQUE, NM 87120
PREVIOUS FIRE 1 PLAN 21-005153

BUILDING 1-6,770 SQ. FT
TYPE 2B CONSTRUCTION
SPRINKLED
FIRE FLOW = 1,750 GPM / 2 = 875, 1,750 MIN. = 1 FH
OCCUPANCY GROUP - RESIDENTIAL GROUP R-1
18'-0" BUILDING HEIGHT

BUILDING 2-10,080 SQ FT
TYPE 2B CONSTRUCTION
SPRINKLED
FIRE FLOW = 2,250 GPM / 2 = 1,125, 1,750 MIN. = 1 FH
OCCUPANCY GROUP - RESIDENTIAL GROUP R-1
18'-0" BUILDING HEIGHT

BUILDING 3 -11,760 SQ. FT BUILDINGS
TYPE 2B CONSTRUCTION
SPRINKLED
FIRE FLOW = 2,250 GPM / 2 = 1,125, 1,750 MIN. = 1 FH
OCCUPANCY GROUP - RESIDENTIAL GROUP R-1
18'-0" BUILDING HEIGHT.

2 EXISTING FIRE HYDRANT NEAR SITE.
1 NEW FIRE HYDRANTS ON SITE.

FIRE DEPARTMENT CONNECTION'S (FDC) SHALL BE LOCATED WITHIN 100' OF A HYDRANT AND SHALL BE 36" MIN. CLEAR SPACING.

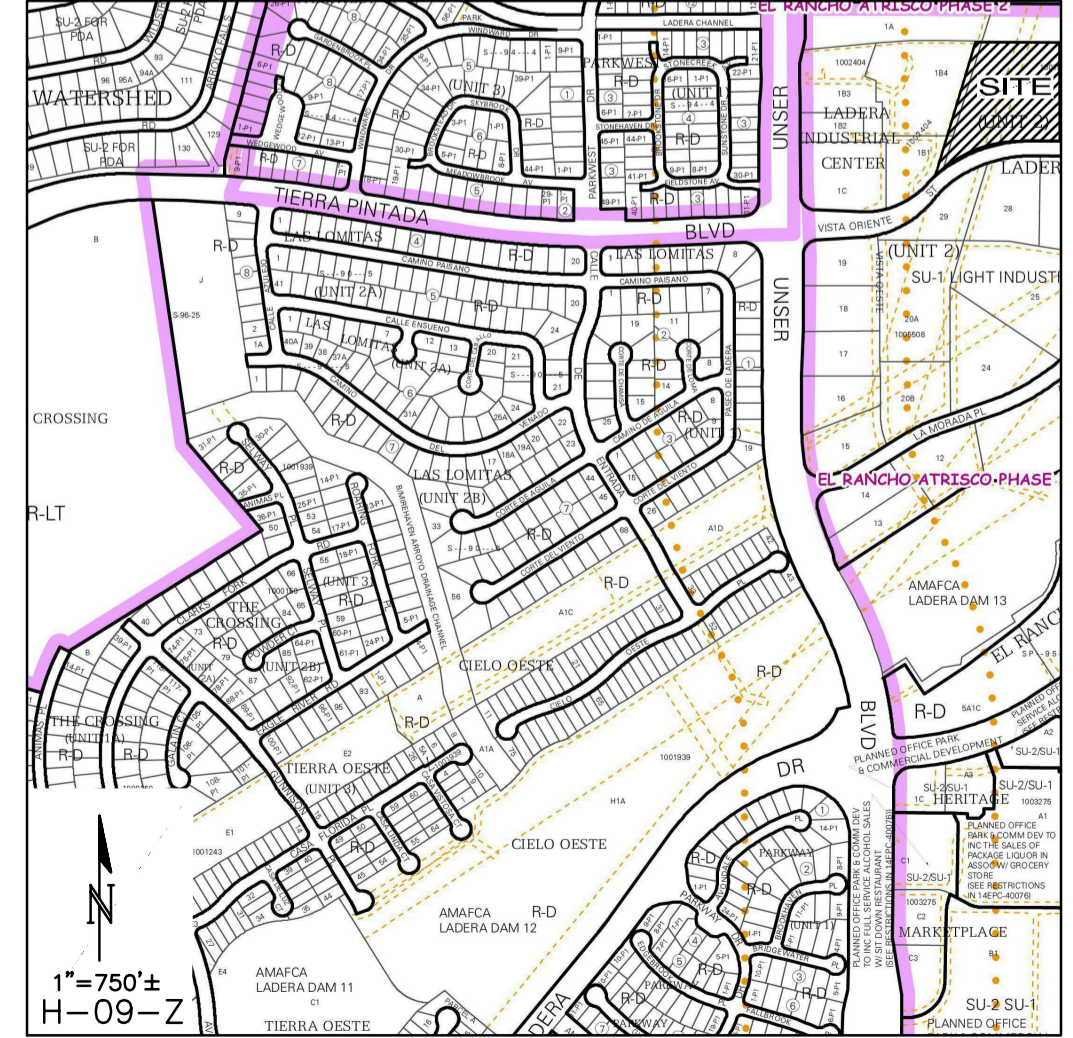
POST INDICATOR VALVES (PIV) SHALL BE PROVIDED PER NFPA 13.

ALL ACCESS ROADS AND FIRE LANES HAVE GRADES LESS THAN 10% AND A LOAD CAPACITY OF 75,000 POUNDS.

ALL ACCESS ROADS AND FIRE LANES WILL ACCOMMODATE A 28' MINIMUM TRUCK TURNING RADIUS.

FIRE APPARATUS ROADS SHALL HAVE AN UNOBSTRUCTED HEIGHT NOT LESS THAN 13'-6".

THERE ARE NO OVERHEAD OBSTRUCTIONS ON SITE TO PROHIBIT LADDER TRUCK OPERATIONS.



Isaacson & Arfman, Inc.
Civil Engineering Consultants
128 Monroe Street NE
Albuquerque, NM 87108
505-266-8828 | www.isaacson.com

© 2020 Isaacson & Arfman, Inc. This design, calculations, and concepts are owned by and remain the property of Isaacson & Arfman, Inc. and no part thereof shall be utilized by any person, firm or corporation for any purpose whatsoever except with the written permission of Isaacson & Arfman, Inc.

NOT FOR CONSTRUCTION

Engineer

**ABQ RV STORAGE & HOTEL
2200 VISTA ORIENTE NW**

DESIGN	ISSUE
DEVELOPMENT	NUMBER
PROJECT NUMBER: IA XXXX	FILE:
DRAWN BY:	CHECKED BY:
DATE:	DATE:

No	Date	Description

SHEET TITLE
**FIRE
HYDRANT
LOCATION
& ACCESS
PLAN**

SHEET NUMBER
FIRE 1