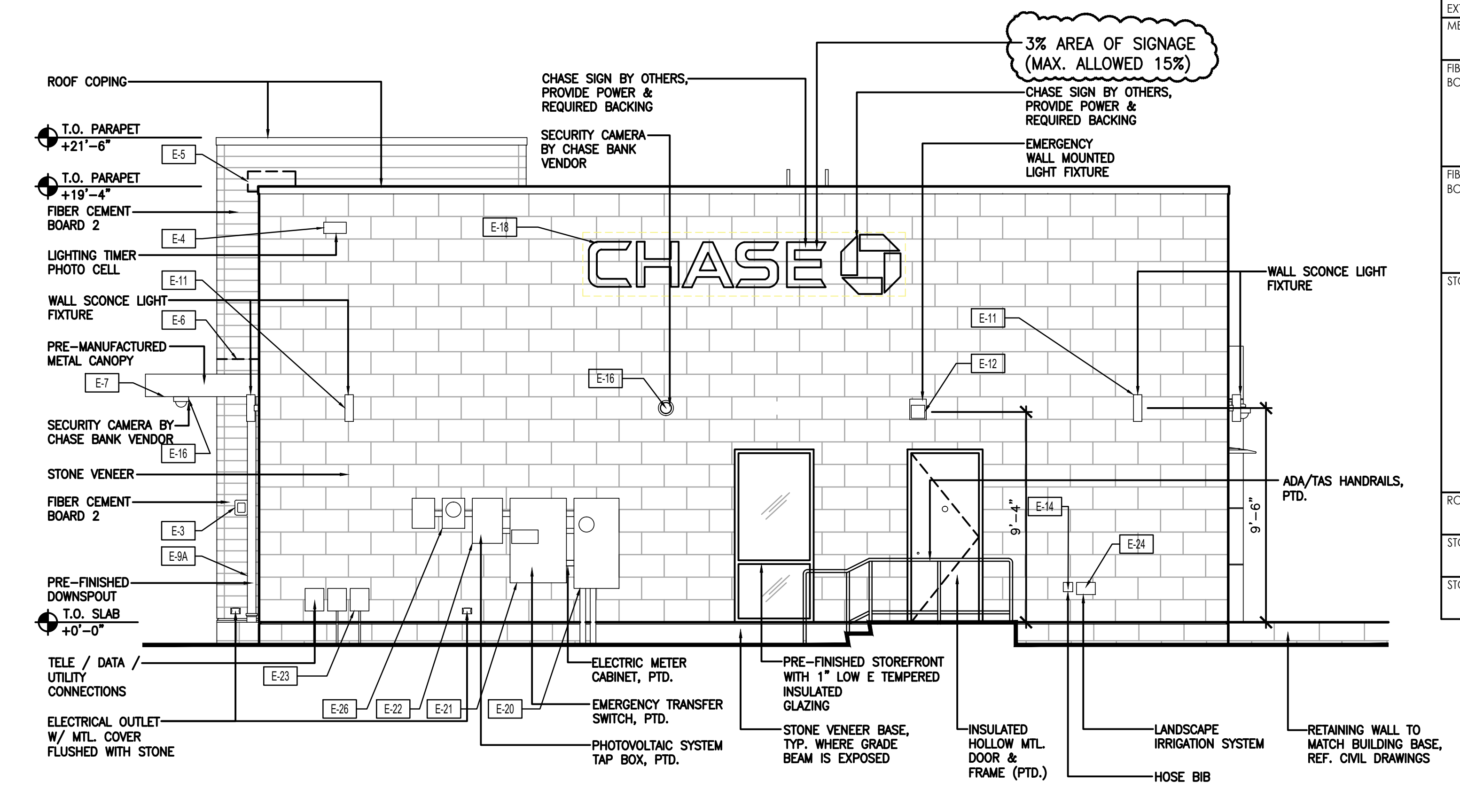
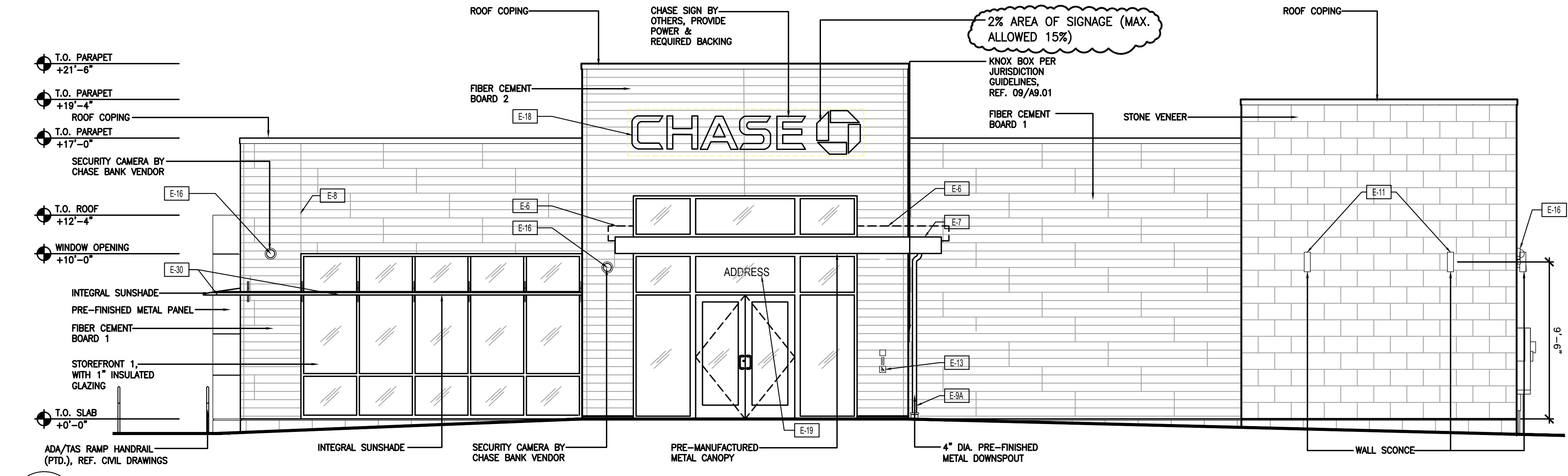


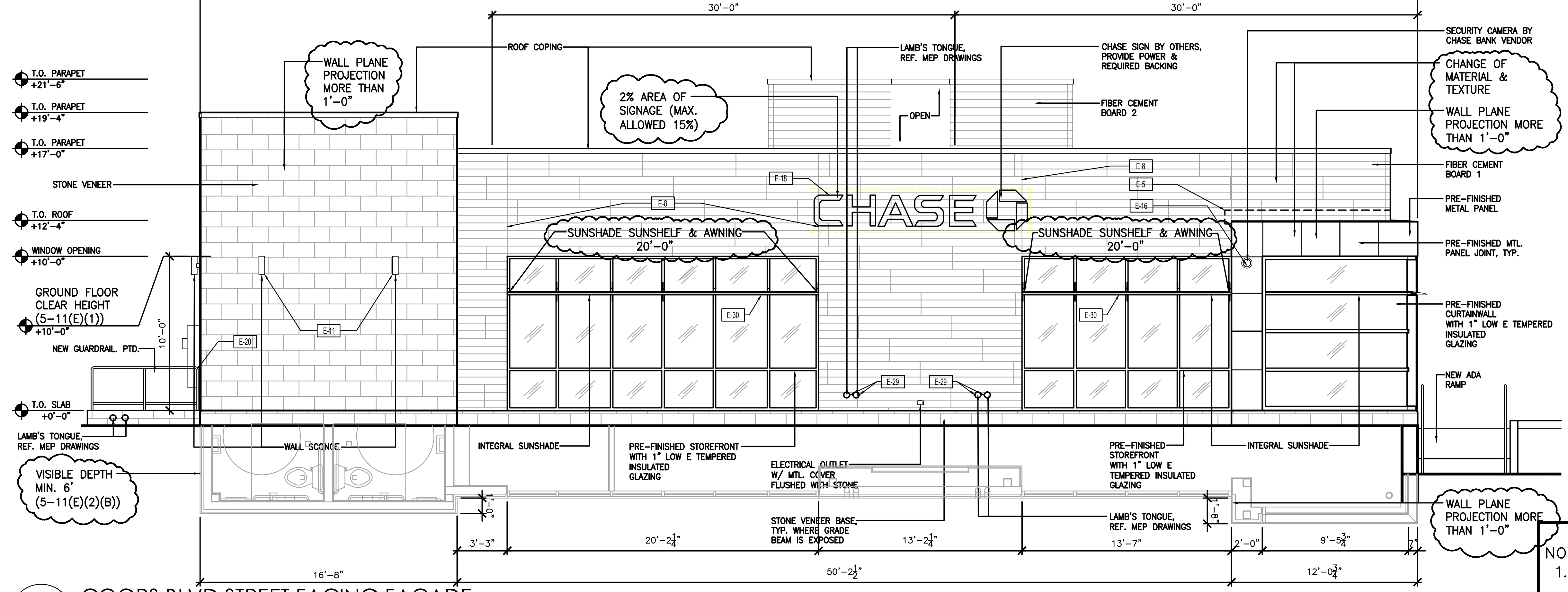
**03** NORTHEAST ELEVATION  
SCALE: 1/4"=1'-0"



**04** SOUTHWEST ELEVATION  
SCALE: 1/4"=1'-0"



**02** NORTHWEST ELEVATION  
SCALE: 1/4"=1'-0"



**01** COORS BLVD STREET FACING FACADE  
SCALE: 1/4"=1'-0"

**COORS BLVD STREET FACING FACADE CLEAR TRANSPARENT WINDOWS CALCULATION**

FACADE AREA = 1,439 SF  
 CLEAR TRANSPARENT WINDOWS AREA = 431 SF  
 CLEAR TRANSPARENT WINDOWS PERCENTAGE = 30%  
 WINDOW SILLS AT FINISHED FLOOR

- NOTE:
- GENERAL CONTRACTOR TO PROVIDE 4'-0" X 4'-0" MOCK-UP FOR ARCHITECT & DEVELOPER EXTERIOR FINISH APPROVAL.
  - INSTALL WALL MOUNTED SENSORS ON PARAPET SIDE OF FACADE.

| EXTERIOR MATERIAL LEGEND |  |
|--------------------------|--|
| METAL PANEL 1            | MANUF ALCOJA ARCH PRODUCTS<br>PRODUCT ZENTURBONE<br>COLOR DURAGLOSS 500 CHASE PROGRAM SILVER   |
| FIBER CEMENT BOARD 1     | MANUF ZICHHA<br>PRODUCT VINTAGE WOOD AWP 1818<br>COLOR BARK<br>SIZE 18" X 24" (NOMINAL)<br>NOTES PROVIDE FABRICATED 3.3" CORNERS AND MANUFACTURERS ESSENTIAL FLASHING SYSTEM   |
| FIBER CEMENT BOARD 2     | MANUF ZICHHA<br>PRODUCT VINTAGE WOOD AWP 3030<br>COLOR ASH<br>SIZE 18" X 24" (NOMINAL)<br>NOTES PROVIDE FABRICATED 3.3" CORNERS AND MANUFACTURERS ESSENTIAL FLASHING SYSTEM  |
| STONE VENEER             | MANUF CORKONADO STONE PRODUCTS<br>PRODUCT MANUFACTURED STONE VENEER<br>COLOR CREAM<br>FINISH CHISELED<br>SIZE 24" WIDE X 12" HIGH X 1" THICK<br>PATTERN FINISHING BOARD<br>MORTAR 1/4" NOMINAL JOINTS W/ FULL SMOOTH TOOLED NATURAL OFF WHITE PORTLAND CEMENT GROUT<br>NOTES FIELD CUT TO MAX LENGTHS POSSIBLE WITH BUTTED AND LAPPED INSIDE AND OUTSIDE CORNERS UTILIZING MANUF. FABRICATED RETURN CORNERS- INTERED CORNERS NOT ACCEPTABLE- CONTROL JOINTS AS RECOMMENDED BY MANUF. |
| ROOF COPING              | MANUF TAC-CITAD<br>PRODUCT TAC-CONTINUOUS<br>COLOR TBO   |
| STOREFRONT 1             | MANUF XAWNEER<br>COLOR ANOXIDIZED BLACK  |
| STOREFRONT 2             | MANUF XAWNEER<br>COLOR CLEAR ANOXIDIZED  |

| ELEVATION NOTES |  |
|-----------------|--|
| E-1             | CONCRETE FOOTINGS / FOUNDATIONS REFER TO STRUCTURAL DWGS   |
| E-2             | CONCRETE CURB AND SLABS REFER TO ARCHITECTURAL SITE PLAN AND DRIVE-UP CANOPY PLAN  |
| E-3             | EMERGENCY ACCESS KEY BOX WHERE REQUIRED BY LOCAL CODE ONLY- RECESS AMOUNT IN WALL CONSTRUCTION AS REQD. TO SET FACE FLUSH WITH ADJACENT WALL FINISH- VERIFY FINAL LOCATION WITH AUTHORITIES HAVING JURISDICTION  |
| E-4             | LIGHTING TIMER SYSTEM PHOTO SENSOR REFER TO ELECTRICAL DRAWINGS  |
| E-5             | METAL FLASHING AND COUNTER FLASHING CONCEALED BEHIND WALL FINISH AND FINISH OF EXPOSED FLASHING TO MATCH ADJACENT ROOFING COPING   |
| E-6             | FLASHING AT PREFAB CANOPY PRE-FINISHED ALUMINUM FLASHING TO SPAN GAP BETWEEN PREFAB CANOPY AND BUILDING CONCEALED BEHIND WALL FINISH- REFER TO WALL SECTIONS AND DETAILS- COLOR TO MATCH EPT-A- VERIFY FINAL FLASHING LENGTH AND CONFIGURATION WITH APPROVED CANOPY SHOP DWGS  |
| E-7             | ENTRANCE / ATM CANOPY SHOP FABRICATED SITE ASSEMBLED PRE-FINISHED BLACK CUSTOM ALUMINUM CANOPY UNIT WITH PRE-FINISHED ELECTRICAL OPENINGS AND INTEGRAL DRAINAGE SYSTEM FASTENED TO BUILDING STRUCTURE- MAPES ARCHITECTURAL CANOPIES SUPER LUMIDEX WITH FLAT SOFFIT AND 1/2" FASCIA, OR APPROVED EQUAL- REFER TO ROOF PLAN AND WALL SECTIONS- INSTALLED BY G.C. |
| E-8             | CONTROL / EXPANSION JOINT VERTICAL ELASTOMERIC SEALANT JOINT CONTINUOUS THROUGH VENEER- MATCH SEALANT COLOR TO VENEER COLOR  |
| E-9A            | SMALL CANOPY DOWNSPOUT/OVERFLOW 2" DIA ALUMINUM DOWNSPOUT PRE-FIN. TO MATCH THE CANOPY- CONNECT TO CAST IRON DRAIN AND AT GRADE AND EXTEND SUBSURFACE TO SITE DRAINAGE SYSTEM- REFER TO SITE PLAN  |
| E-9B            | LARGE CANOPY DOWNSPOUT/OVERFLOW ROUND ALUMINUM DOWNSPOUT- SIZED AS REQUIRED- WITH ATTACHMENT HARDWARE AS REQUIRED- PAINTED TO MATCH ADJACENT WALL COLUMN FINISH- SPLASH TO CONCRETE DRIVE UP ISLAND  |
| E-10            | SCUPPER REFER TO ROOF PLAN SURFACE MOUNT DECORATIVE LIGHT FIXTURE REFER TO REFLECTED CEILING PLAN AND ELECTRICAL DRAWINGS  |
| E-11            | SURFACE MOUNT EMERGENCY LIGHT FIXTURE TO BE PROVIDED ONLY WHEN DOOR BELOW IS A REQUIRED OR MARKED EXIT- REFER TO REFLECTED CEILING PLAN AND LIGHT FIXTURE SCHEDULE   |
| E-12            | AUTOMATIC DOOR OPERATOR BUTTON AND KEYCARD READER RECESSED FLUSH WITH WALL SURFACE- DO NOT SURFACE MOUNT   |
| E-13            | HOSE BIB SET FLUSH WITH FACE OF MASONRY VENEER- REFER TO PLUMBING FIXTURE SCHEDULE   |
| E-14            | ELECTRICAL OUTLET SET FLUSH WITH FACE OF MASONRY VENEER- PROVIDE METAL COVER COMPLIANT WITH NEC  |
| E-15            | SECURITY CAMERA PROVIDE CONCEALED JUNCTION BOX AND CONDUIT TO INTERIOR- REFER TO OWNER'S SECURITY CONSULTANT DRAWINGS  |
| E-16            | BANK EQUIPMENT FURNISHED AND INSTALLED BY BANK EQUIPMENT VENDOR- COORD. WALL OPENINGS AND ELECTRICAL / DATA REQUIREMENTS WITH OWNER-FURNISHED EQUIPMENT SHOP DRAWINGS AND PRODUCT DATA   |
| E-17            | SIGNAGE BY OWNER'S SIGN VENDOR- ALL C- PROVIDE ROUGH ELEC. WORK AND BLOCKING IN WALL AS REQD. FOR VENDOR INSTALLATION  |
| E-18            | BUILDING ADDRESS NUMBER WHITE VINYL NUMBERS WITH 1/2" WIDE STROKE APPLIED TO INTERIOR FACE OF GLASS TRANSOM- MIN. 6" HEIGHT OR AS REQD. BY LOCAL CODE  |
| E-19            | ELECTRICAL SERVICE CT / METER CABINET REFER TO ELECTRICAL DRAWINGS   |
| E-20            | EMERGENCY TRANSFER SWITCH REFER TO ELECTRICAL DRAWINGS   |
| E-21            | PHOTOVOLTAIC SYSTEM FUSED DISCONNECT SWITCH REFER TO ELECTRICAL DRAWINGS   |
| E-22            | TELE / DATA / UTILITY CONNECTIONS REFER TO ELECTRICAL DRAWINGS   |
| E-23            | LANDSCAPE IRRIGATION SYSTEM CONTROLLER, WIRELESS NETWORK CONNECTOR, AND DEDICATED WP POWER OUTLET- REFER TO SITE PLAN AND ELECTRICAL PLAN  |
| E-24            | GAS METER REFER TO SITE PLAN AND PLUMBING DRAWINGS   |
| E-25            | FUTURE PHOTOVOLTAIC SYSTEM DISCONNECT SWITCH AND PERFORMANCE METER REFER TO ELECTRICAL DRAWINGS  |
| E-26            | FIRE ALARM SYSTEM BELL AND STROBE WHERE REQUIRED BY LOCAL CODE ONLY- VERIFY FINAL LOCATION WITH LOCAL AUTHORITIES HAVING JURISDICTION  |
| E-27            | FIRE DEPARTMENT CONNECTION FIRE SUPPRESSION SYSTEM EXTERIOR CONNECTION WHERE REQD. BY LOCAL CODE ONLY- VERIFY FINAL LOCATION WITH LOCAL AUTHORITIES HAVING JURISDICTION  |
| E-28            | ROOF OVERFLOW DOWNSPOUT NOZZLE REFER TO PLUMBING DRAWINGS AND DESIGN INTENT ARCHITECTURAL SITE PLAN  |
| E-29            | SUN SHADE GLAZING SYSTEM MANUFACTURERS STANDARD INTEGRAL SHADE ACCESSORY- REFER TO WALL SECTIONS- MATCH GLAZING SYSTEM FINISH BASIS OF DESIGN'S XAWNEER VERSIDEL 30" WEDGE WITH ANGULAR FASCIA AND CIRCULAR BLADES   |
| E-30            | ROLLUP REFER TO ARCHITECTURAL SITE PLAN AND DRIVE-UP CANOPY PLAN   |

**CHASE RETAIL BANKING CENTER**  
 COORS BLVD & PASEO DEL NORTE  
 9261 COORS BLVD, NW  
 ALBUQUERQUE, NEW MEXICO 87114

**ROUCH ARCHITECTS**

1445 ROSS AVENUE  
 SUITE 5700  
 DALLAS, TEXAS 75202  
 214.997.6029

07/16/2021

REVISIONS

| NO. | DESCRIPTION |
|-----|-------------|
|     |             |
|     |             |
|     |             |

DATE ISSUED: FEBRUARY 03, 2021  
 JOB #: 2020049  
 SHEET NAME: EXTERIOR ELEVATIONS  
 SHEET: **A3.01**