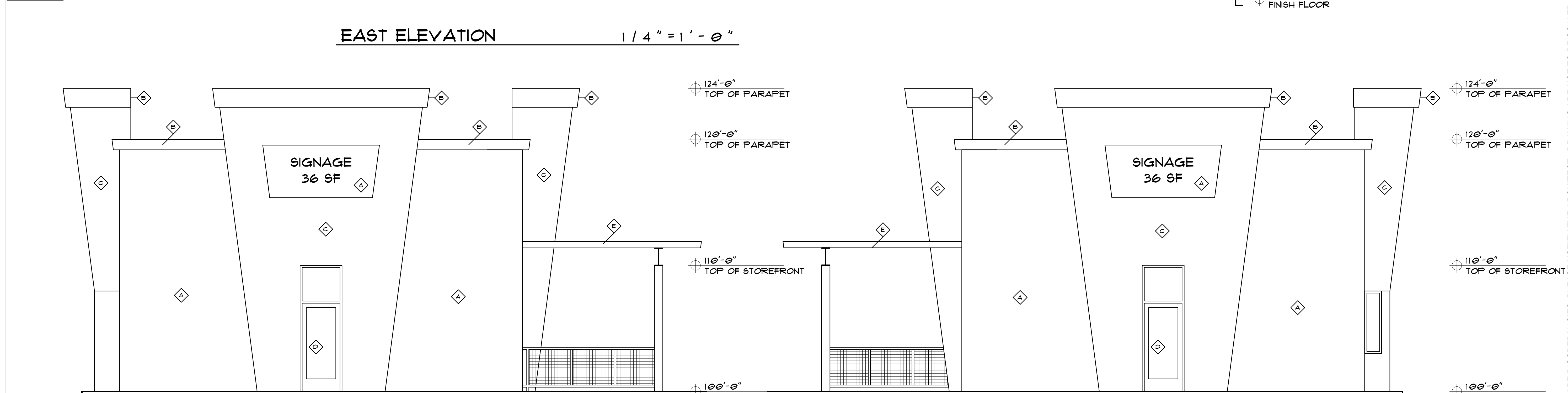
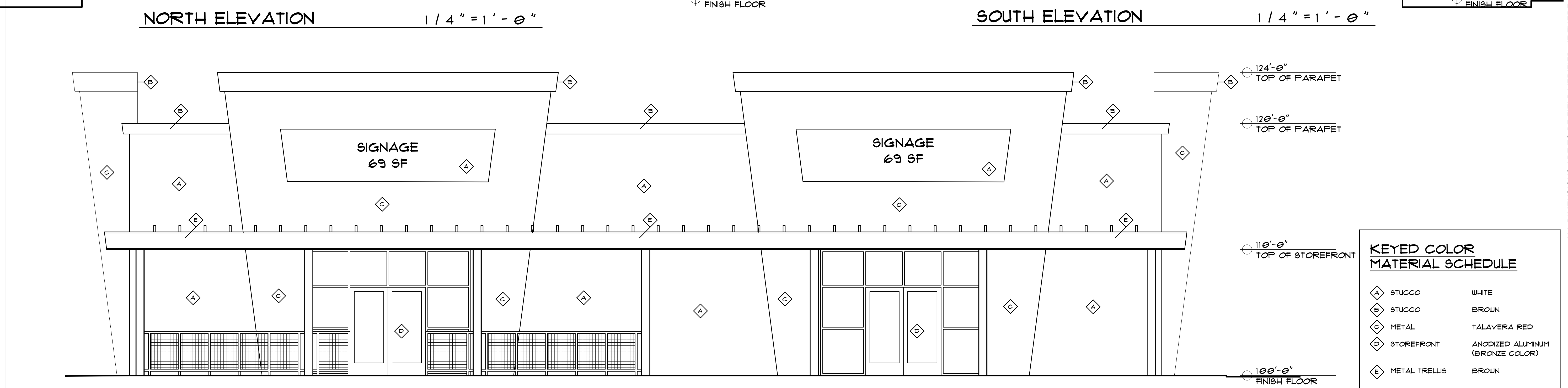


EAST ELEVATION $1/4" = 1' - 0"$



NORTH ELEVATION $1/4" = 1' - 0"$

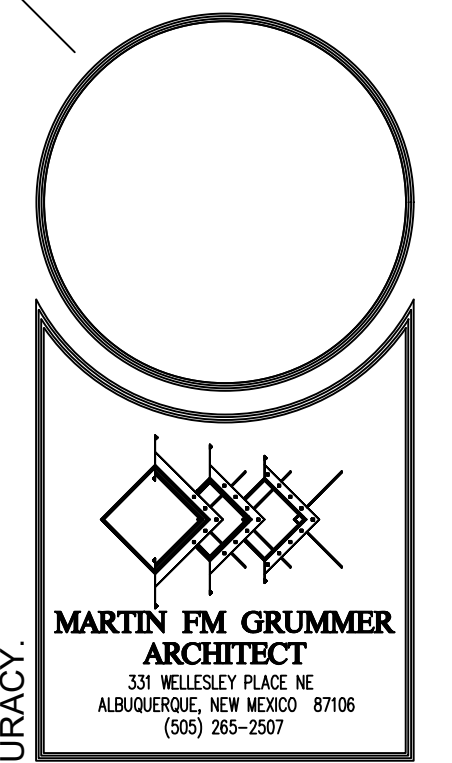
SOUTH ELEVATION $1/4" = 1' - 0"$



WEST ELEVATION $1/4" = 1' - 0"$

KEYED COLOR MATERIAL SCHEDULE

◆ A	STUCCO	WHITE
◆ B	STUCCO	BROWN
◆ C	METAL	TALAVERA RED
◆ D	STOREFRONT	ANODIZED ALUMINUM (BRONZE COLOR)
◆ E	METAL TRELLIS	BROWN



MARTIN FM GRUMMER ARCHITECT
 331 WELLESLEY PLACE NE
 ALBUQUERQUE, NEW MEXICO 87106
 (505) 265-1207



PETERSON PROPERTIES

**CENTRAL MERCADO BLDG CC
 CENTRAL & SAN PEDRO SE
 ALBUQUERQUE, NM 87108**

ELEVATIONS

DATE: 21 JUNE 2021
 DRAWN BY: MFMG
 CHECKED BY:
 VERIFIED BY:

REVISIONS

NO.	DESCRIPTION

SHEET NO:
A5.1

ALL DIMENSIONS ARE TO BE FIELD VERIFIED. IF THERE ARE DISCREPANCIES, PLEASE NOTIFY THE ARCHITECT. DRAWING ARE NOT TO BE SCALED. USE DIMENSIONS FOR ACCURACY.