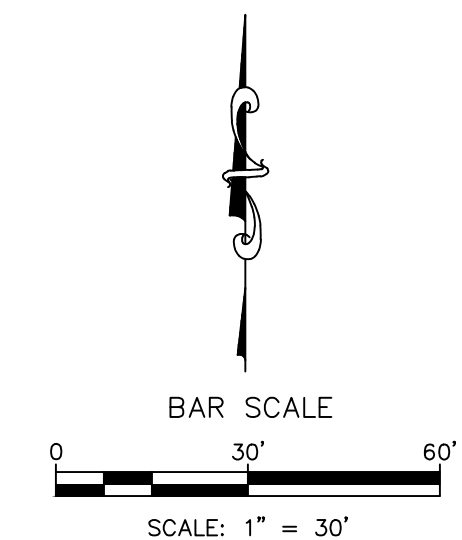


Site Sketch for Lot 1-A, Block 9 Mesa Verde Addition Being Comprised of All of Lots 1-12 and Remaining Portions of Lots 37-48, Block 9 Mesa Verde Addition City of Albuquerque, Bernalillo County, New Mexico August 2025

Legend

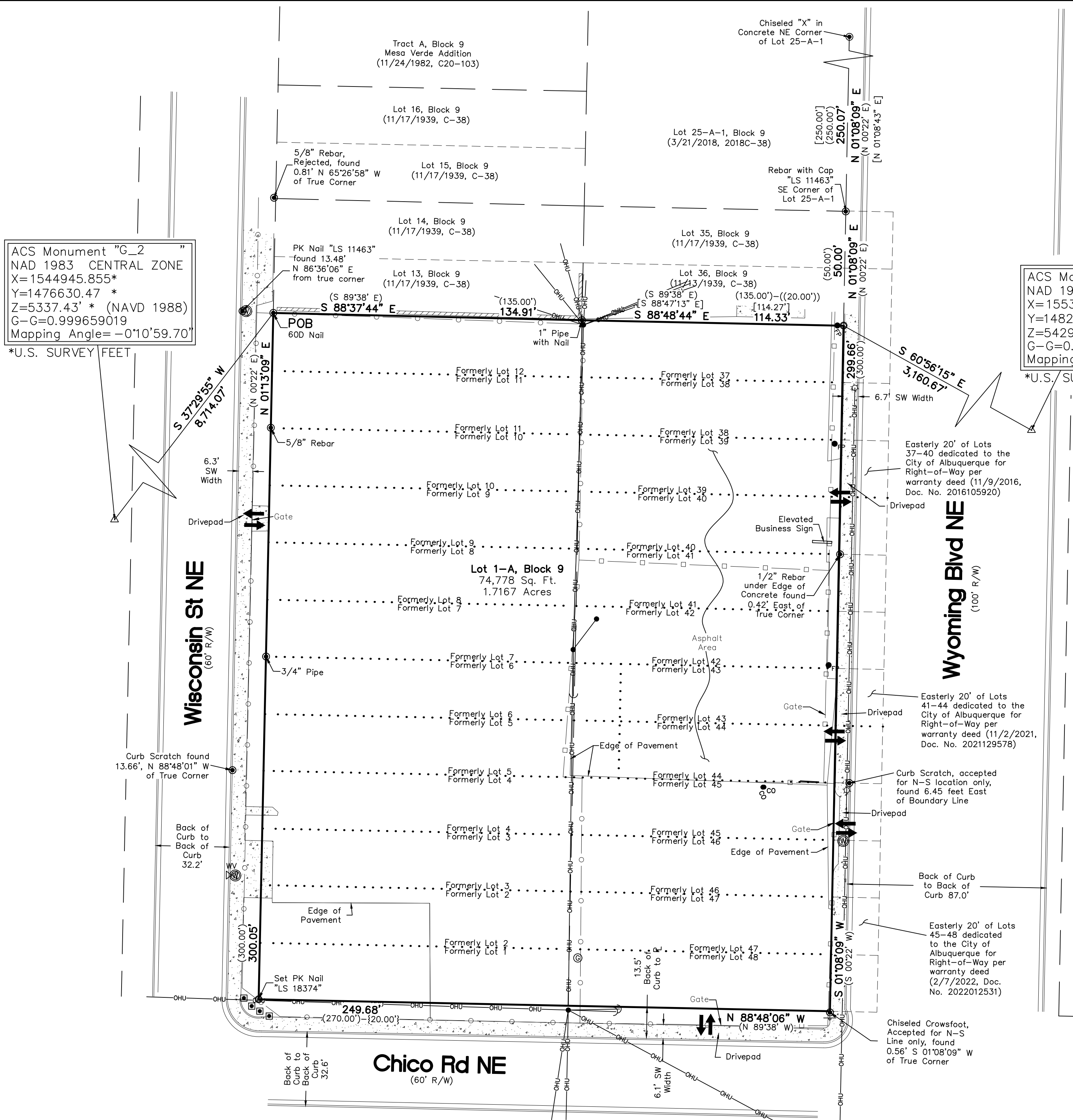
N 90°00'00" E	MEASURED BEARINGS AND DISTANCES
(N 90°00'00" E)	RECORD BEARINGS AND DISTANCES PER PLAT (11/17/1939, C-38)
[N 90°00'00" E]	RECORD BEARINGS AND DISTANCES PER PLAT (3/21/2018, 2018C-38)
{N 90°00'00" E}	RECORD BEARINGS AND DISTANCES PER DEED (2/7/2022, DOC. NO. 2022012531)
((N 90°00'00" E))	RECORD BEARINGS AND DISTANCES PER DEED (11/9/2016, DOC. NO. 2016105920)
●	FOUND MONUMENT AS INDICATED
○	SET 1/2" REBAR WITH CAP "LS 18374" UNLESS OTHERWISE NOTED
□	UTILITY PEDESTAL
—OHU—	OVERHEAD UTILITY LINE
●	UTILITY POLE
→	ANCHOR
☆	LIGHT POLE
■	CONCRETE
—x—	WIRE FENCE
—□—	METAL FENCE
▨	BLOCK WALL
—○—	CHAINLINK FENCE
●CO	SAS CLEANOUT
WV	WATER VALVE
⊙	WATER METER
—OR—	SIGN
↔	CURB CUT/INDICATION OF ACCESS TO ROADWAY
●FP	FLAGPOLE
■	BOLLARD
⊙	GAS METER



CSI-CARTESIAN SURVEYS INC.

P.O. BOX 44414 RIO RANCHO, N.M. 87174
Phone (505) 896 - 3050 Fax (505) 891 - 0244
cartesianbrian@gmail.com

Sheet 1 of 1
231818



ACS Monument "G_2"
NAD 1983 CENTRAL ZONE
X=1544945.855*
Y=1476630.47 *
Z=5337.43' * (NAVD 1988)
G-G=0.999659019
Mapping Angle=-0°10'59.70"

*U.S. SURVEY FEET

ACS Monument "5_K20"
NAD 1983 CENTRAL ZONE
X=1553259.684*
Y=1482001.249 *
Z=5429.995' * (NAVD 1988)
G-G=0.999652832
Mapping Angle=-0°10'02.59"

*U.S. SURVEY FEET