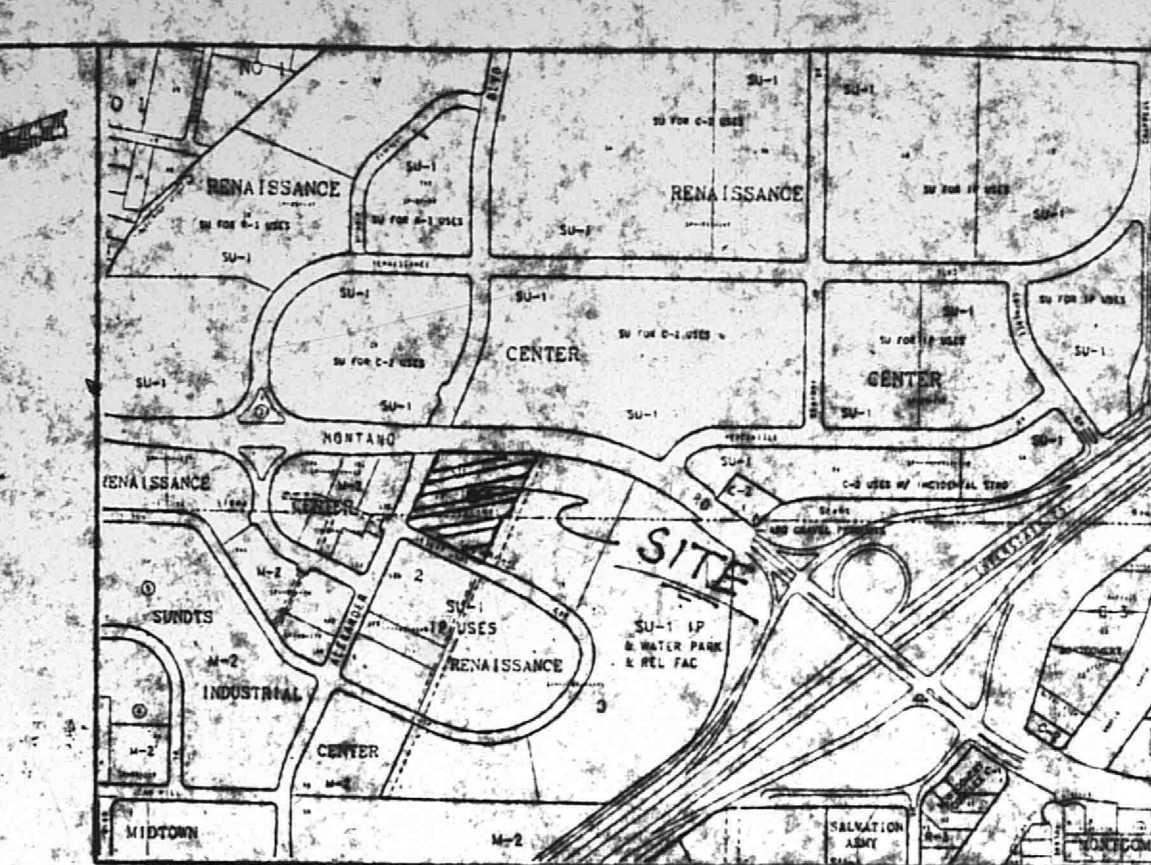


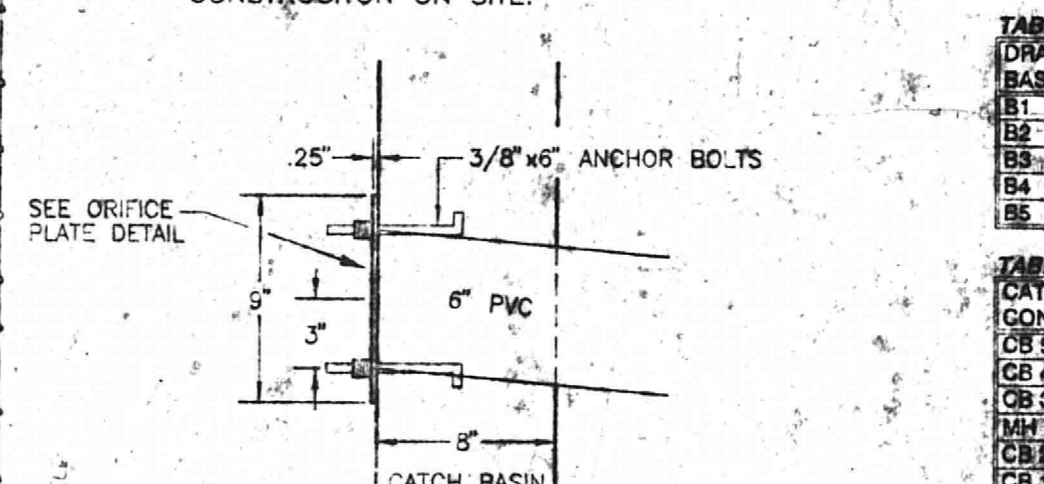
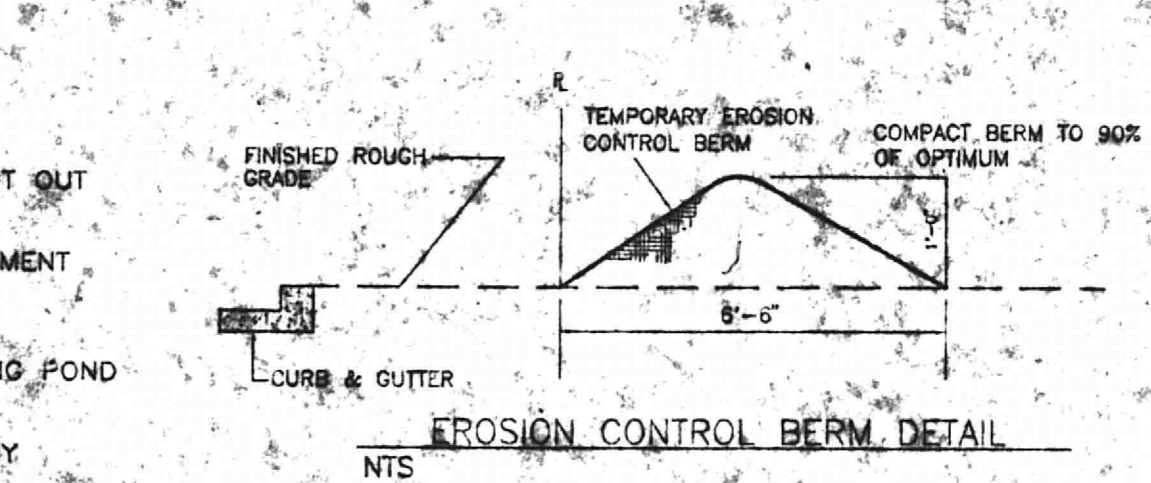
- SEE WORK ORDER 5179.90 DRAWINGS FOR CONNECTION DETAILS.
- LEGEND**
- FOUND AND USED MONUMENT AS DESIGNATED
  - FIRE HYDRANT
  - EXISTING SAS MH
  - STANDARD 6" CONCRETE CURB & GUTTER
  - GRAVEL CONCOURSE
  - WATER VALVE
  - WATER METER
  - OVERHEAD UTILITY LINES
  - SET IN CONCRETE
  - EXISTING STORM DRAIN MANHOLE
  - NEW SPOT ELEVATION (TOP OF ASPHALT)
  - NEW CATCH BASIN
  - NEW STORM DRAIN MANHOLE
  - NEW STORM DRAIN LINE
  - RETAINING WALL
  - WATER SURFACE ELEVATION



**VICINITY MAP**  
LEGAL DESCRIPTION: TRACT 11 OF RENAISSANCE CENTER F-16-Z

**GART SPORTS**  
BUILDING AREA: 45,968sf (232' X 194')  
NET LEASABLE AREA: 44,800sf  
TOTAL PARKING ON SITE: 224 SPACES  
TOTAL PARKING REQUIRED AT 5/1000sf: 224 SPACES  
MDP PARKING REQ'D: 6 SPACES  
MDP PARKING PROVIDED: 6 SPACES  
BUILDING USE: RETAIL SALES

- EROSION CONTROL PLAN NOTES**
- CONTRACTOR IS RESPONSIBLE FOR OBTAINING A TOPSOIL DISTURBANCE PERMIT PRIOR TO BEGINNING WORK.
  - CONTRACTOR IS RESPONSIBLE FOR CLEANING ALL SEDIMENT OUT OF EXISTING RIGHT-OF-WAY.
  - CONTRACTOR IS RESPONSIBLE FOR CLEANING UP ANY SEDIMENT THAT GETS INTO EXISTING RIGHT-OF-WAY.
  - EROSION CONTROL BERM IS REQUIRED ON THE SOUTH & WEST PROPERTY LINE TO DIVERT RUNOFF TO NEW DESILTING POND ON THE SOUTHWEST SIDE OF THE TRACT.
  - EROSION CONTROL BERM MUST BE IN PLACE PRIOR TO ANY CONSTRUCTION ON SITE.



**TABLE 1**

DRAINAGE BASIN (CFS)	10-YR V-RUNOFF (AG-FT)	100-YR V-RUNOFF (AG-FT)	DRIFTE PLATE SIZE ON PIPE COMING OUT OF CB
B1	2.81	3.42	6"
B2	6.86	8.30	8"
B3	3.25	3.98	6"
B4	2.81	3.42	6"
B5	1.78	2.16	6"

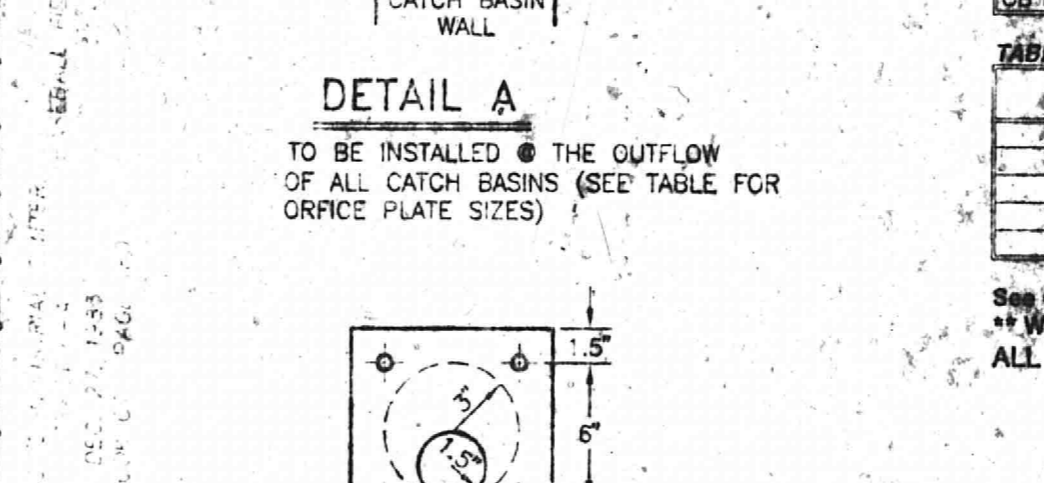
**TABLE 2**

CATCH BASIN CONNECTIONS	FLOW (CFS)	L.F. (FT)	PIPE USED	SLOPE (%)	VELOCITY (FT/S)
CB 1 TO 4	0.28	130.00	6" PVC	0.60	2.39
CB 4 TO 3	0.32	142.61	6" PVC	0.60	2.41
CB 3 TO MH	0.27	158.03	6" PVC	0.60	2.81
MH TO CB7	0.27	218.18	6" PVC	1.04	8.05
CB 6 TO 7	0.27	161.60	6" HDPE	0.60	5.98
CB 1 TO MH	0.28	148.00	12" TOP	1.17	5.02

**TABLE 3**

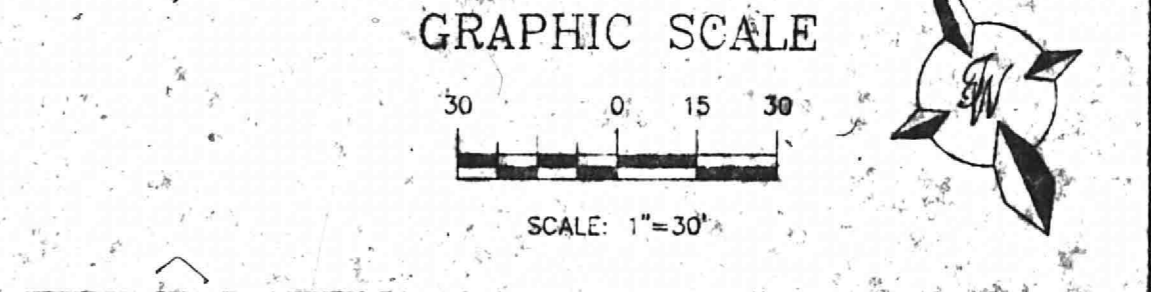
CATCH BASIN #	INV. @ CB (FT)	HW. ELEV. (FT)	RIM ELEV. (FT)	HW. HT. (FT)
B1	5024.88	5035.88	5033.45	0.63
B2	5028.16	5029.88	5027.15	0.74
B3	5027.71	5025.48	5028.71	0.74
B4	5028.47	5023.01	5022.00	1.01
B5	5029.42	5023.75	5022.95	0.80

See Grading and Drainage Plan for drainage patterns and catch basin locations.  
\* Water height (100-YEAR WATER SURFACE ELEVATION) from the rim of the catchbasin.  
ALL CATCH BASINS ARE BUILT TO CITY STD DWG # 2206



**GENERAL NOTES**

- ALL ELEVATIONS ARE AT FLOWLINE.
- WE ARE RECOMMENDING TO DRAIN THE ROOF RUN-OFF TO THE CATCH BASINS THROUGH A STORM DRAIN PIPE.
- ALL ENTRANCES SHALL HAVE A 1" WATER BLOCK.
- EAST ENTRANCE WILL BE USED AS THE EMERGENCY SPILLWAY.
- SEE DRAINAGE REPORT FOR SUPPLEMENTARY CALCULATIONS AND DETAILS ON THE DRAINAGE PIPE & ORIFICE PLATE SIZES.
- SPOT ELEVATIONS ARE TOP OF ASPHALT. CURB ELEVATIONS ARE SPOT ELEVATION PLUS 6".
- ALL WHEELCHAIR RAMPS WILL BE BUILT TO CITY STANDARD DRAWING #2441 AND 2426.
- TEMPORARY BENCH MARK LOCATED AT THE SE PROPERTY CORNER. ELEVATION SUPPLIED BY PRECISION SURVEY (5025.50). FIELD VERIFY BENCH MARK PRIOR TO USE.



APPROVAL FOR ROUGH GRADING PLAN DATE

**ENGINEER'S SEAL**  
RONALD R. BOHANNAN P.E. #7888

**ALBUQUERQUE GART SPORTS**  
GRADING & DRAINAGE PLAN

**TERRA WEST DEVELOPMENT MANAGEMENT SERVICES**  
4600 MONTGOMERY BLVD. N.E. SUITE 3  
ALBUQUERQUE, NEW MEXICO 87110  
(505) 263-7582 BLDG. DEPT.  
MAY 01 1995

**DRAWN BY: BUC**  
DATE: 02/09/95  
SHEET # 4 of 4  
JOB # 940031

CITY OF ALBUQUERQUE  
THIS MICROIMAGE IS THE BEST POSSIBLE REPRODUCTION DUE TO THE POOR QUALITY OF THE ORIGINAL DOCUMENT.

Re 15 DATE 3/16/95 OF ESD

CITY OF ALBUQUERQUE  
This microimage is certified to be a complete and accurate copy of the original as it appears in the files of the PLANNING DEPT./BUILDING & SAFETY and was prepared in the normal course of business.

The photographic process used meets the Basic Microfilm Standards of the National Micrographics Association (ANSI-1977)

*Roberta Sanchez*  
CITY CLERK

*Roberta Sanchez*  
OFFICIAL SEAL  
ROBERTA SANCHEZ  
CITY CLERK  
STATE OF NEW MEXICO  
My Commission Expires 5-8-99