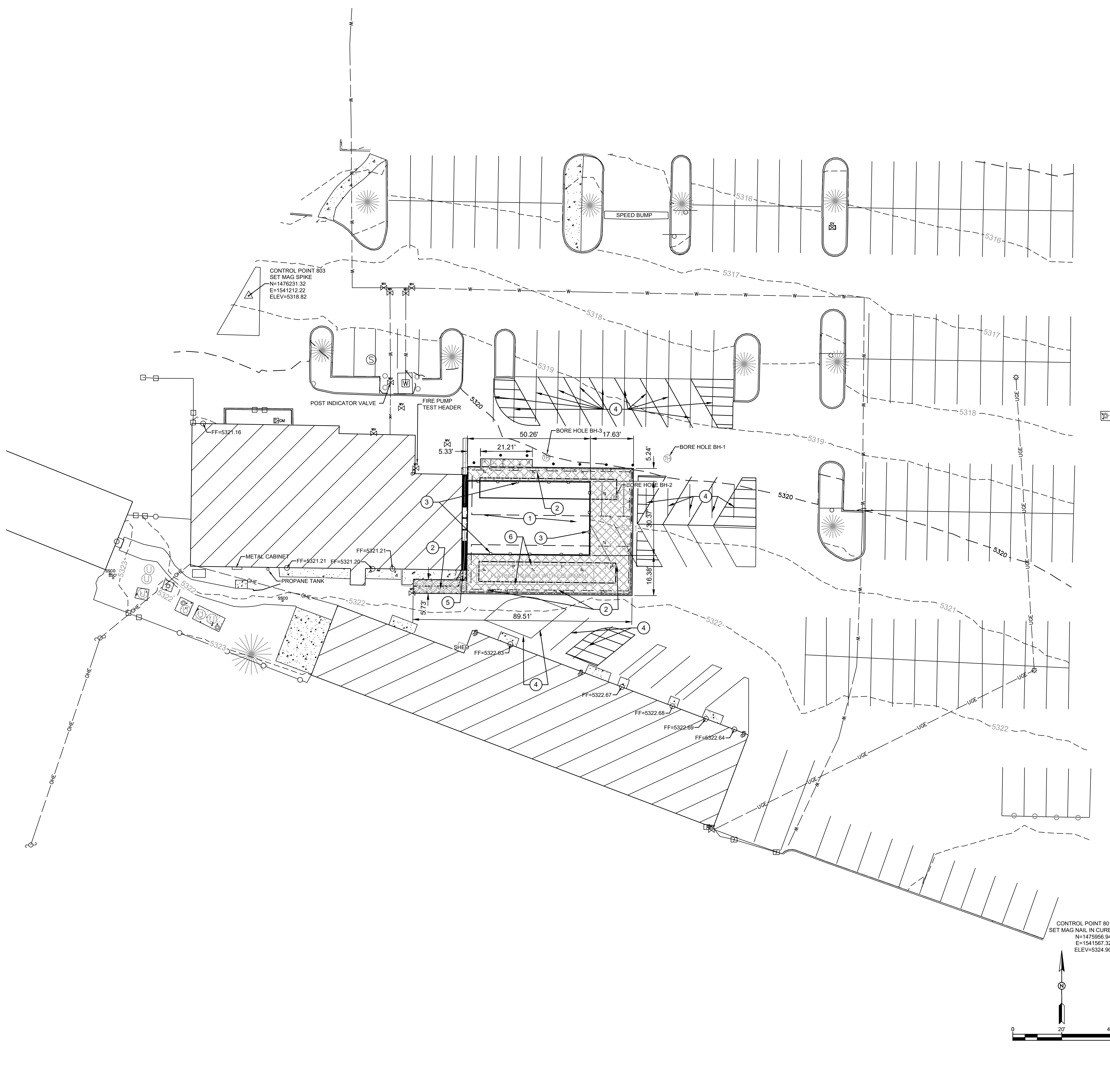


ADMINISTRATIVE AMENDMENT

FILE #: _____ PROJECT #: _____

APPROVED BY

DATE



GENERAL NOTES

- A. PROPERLY DISPOSE OF ALL REMOVED MATERIALS AT AN OFF-SITE LOCATION.
- B. SAWCUT ASPHALT TO LIMITS SHOWN.
- C. REUSE EXISTING PARKING BUMPERS THAT ARE IN GOOD CONDITION FROM PARKING SPACES TO BE REMOVED. REPLACE BUMPERS AT PARKING SPACES WHERE THE PARKING BUMPERS ARE IN BAD CONDITION.

REMOVAL NOTES

- 1. EXISTING CONCRETE PAD TO REMAIN.
- 2. REMOVE AND DISPOSE OF EXISTING ASPHALT PAVEMENT.
- 3. REMOVE AND DISPOSE OF EXISTING METAL FENCE.
- 4. OBLITERATE EXISTING STRIPING.
- 5. REMOVE AND DISPOSE OF EXISTING CONCRETE SIDEWALK. REMOVE CONCRETE TO NEAREST JOINT AND REPLACE CONCRETE.
- 6. MEP TO BE REMOVED BY OWNER.

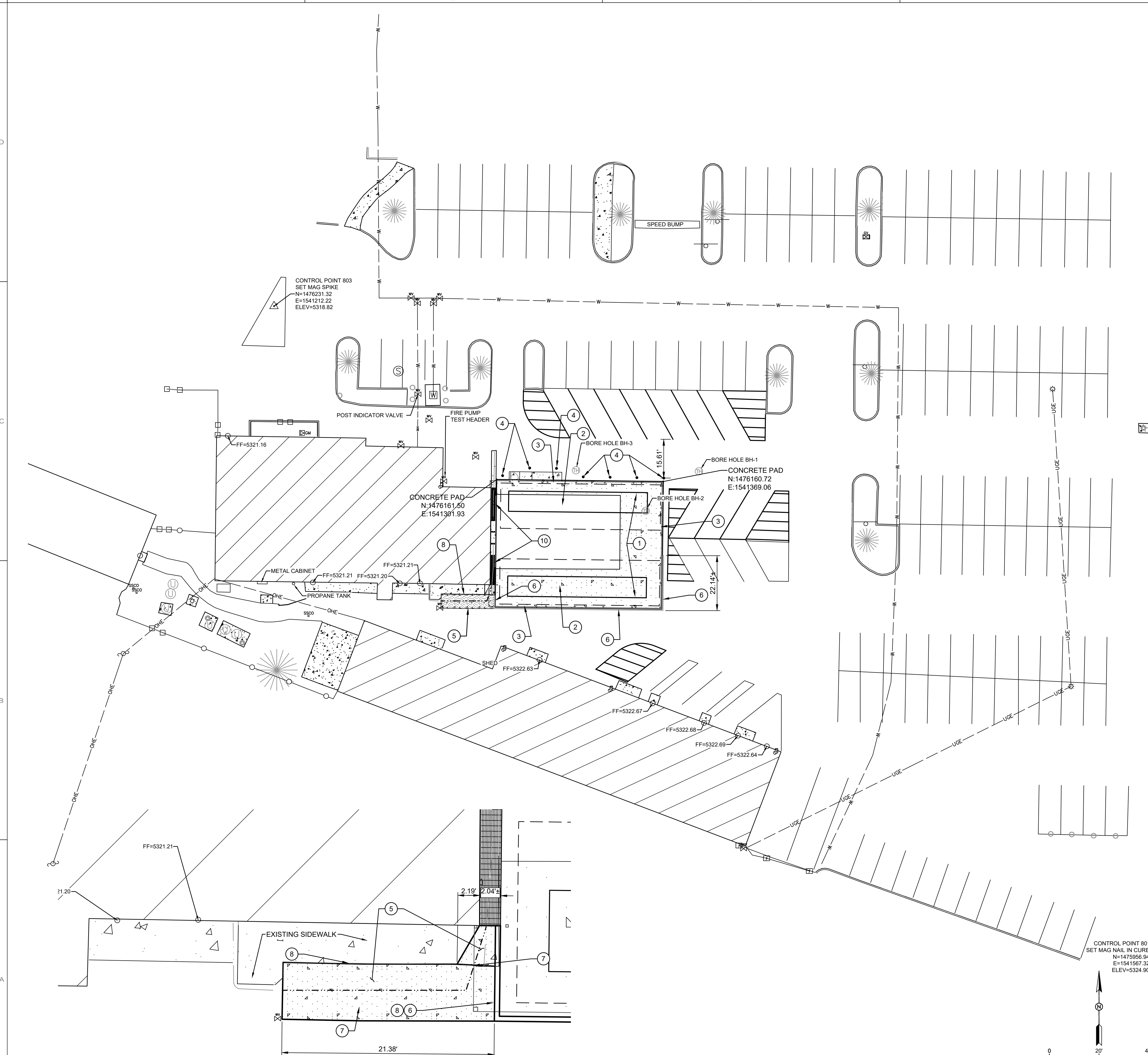
LEGEND

- EXISTING BUILDING
- ASPHALT REMOVAL
- EXISTING CONCRETE SLAB
- EXISTING FENCE
- EXISTING WATER VALVE

SMITH ENGINEERING
 Solutions for Today...
 Vision for Tomorrow
 2201 San Pedro Dr NE
 Building 4, Suite 200
 Albuquerque, NM 87110
 Phone: 505-884-0700
 www.smithengineering.pro

CITY OF ALBUQUERQUE DEPARTMENT OF MUNICIPAL DEVELOPMENT	
PROJECT TITLE: GIBSON MEDICAL CENTER, CHILLER REPLACEMENT	
DRAWING TITLE: SITE REMOVAL PLAN	
Design Review Committee	City Engineer Approval
Mo./Day/Yr.	Mo./Day/Yr.
PERMIT SET	City Project No. P7215.01 NTP#18 Zone Map No. M-18-Z DWG. CD-101 Sheet 3 OF 27

AS-BUILT INFORMATION	
CONTRACTOR	DATE
WORK STARTED BY	DATE
FIELD ACCEPTANCE BY	DATE
FIELD CHECKED BY	DATE
DRAWN BY	DATE
CHECKED BY	DATE
MICRO-FILM INFORMATION	
RECORDED BY	DATE
NO.	
BENCH MARKS	
NO.	DATE
SURVEY INFORMATION	
FIELD NOTES	BY
NO.	DATE
REVISIONS	By
No.	Date
DESIGN	
Designed By: N.P.	DATE: 05/27/22
Drawn By: J.P.	DATE: 05/27/22
Checked By: N.P.	DATE: 05/27/22



1 ENLARGED VALLEY GUTTER PLAN
SCALE: 1"=5'

GENERAL NOTES

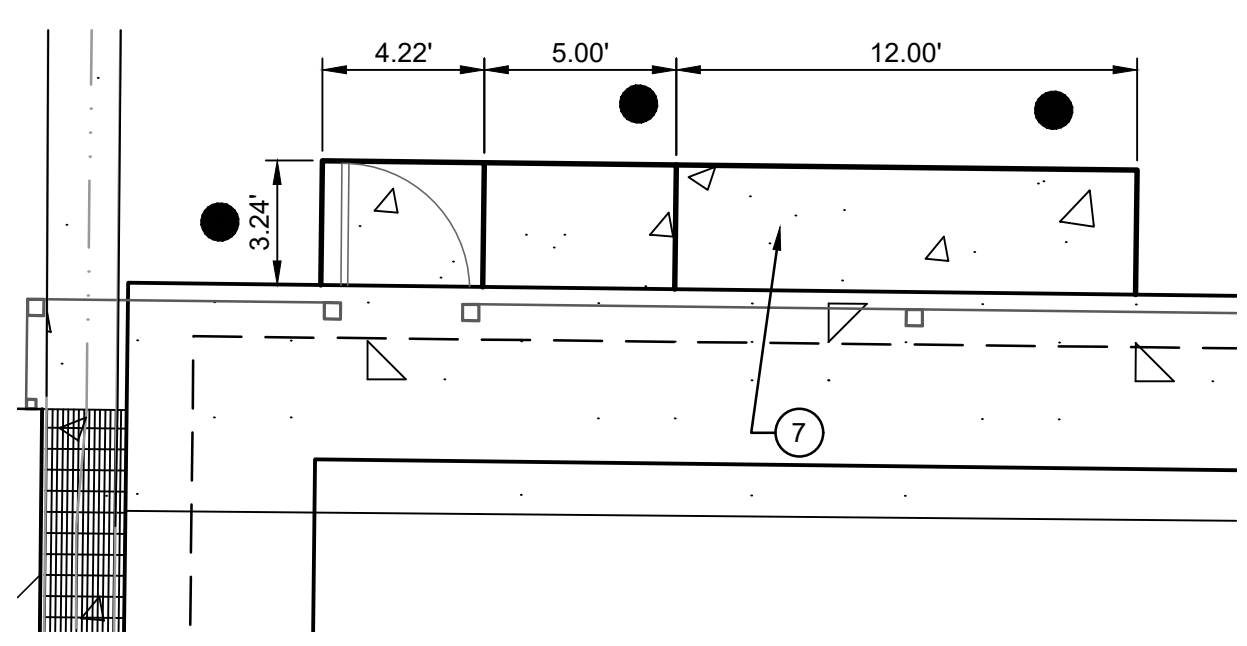
A. SEE SHEET C-301 FOR STRIPING PLAN.

KEYED NOTES

1. NEW CONCRETE PAD. SEE STRUCTURAL SHEETS.
2. NEW CHILLER. SEE MECHANICAL.
3. NEW CHILLER SCREEN WALL. SEE ARCHITECTURAL.
4. INSTALL NEW BOLLARDS (7) PER CIVIL DETAIL SHEET C-401.
5. CONSTRUCT NEW CONCRETE VALLEY GUTTER. SEE CIVIL DETAIL SHEET C-401. SEE SHEET C-201 FOR GRADES.
6. CONSTRUCT NEW HEADER CURB PER COA DRAWING #2415B. SEE SHEET C-201 FOR FLOWLINE GRADES. PLACE EXPANSION JOINT BETWEEN CONCRETE HEADER CURB AND NEW CONCRETE PAD.
7. CONTROL JOINTS.
8. SEALED EXPANSION JOINT.
9. NEW CONCRETE RAMP. SEE SHEET C-201 FOR GRADES.
10. INSTALL NEW CULVERT PLATES. MATCH EXISTING CULVERT COVER. FIELD VERIFY SIZE AND MATERIAL.

LEGEND

- EXISTING BUILDING
- CONCRETE PAD
- SCREEN WALL
- BOLLARD
- HEADER CURB

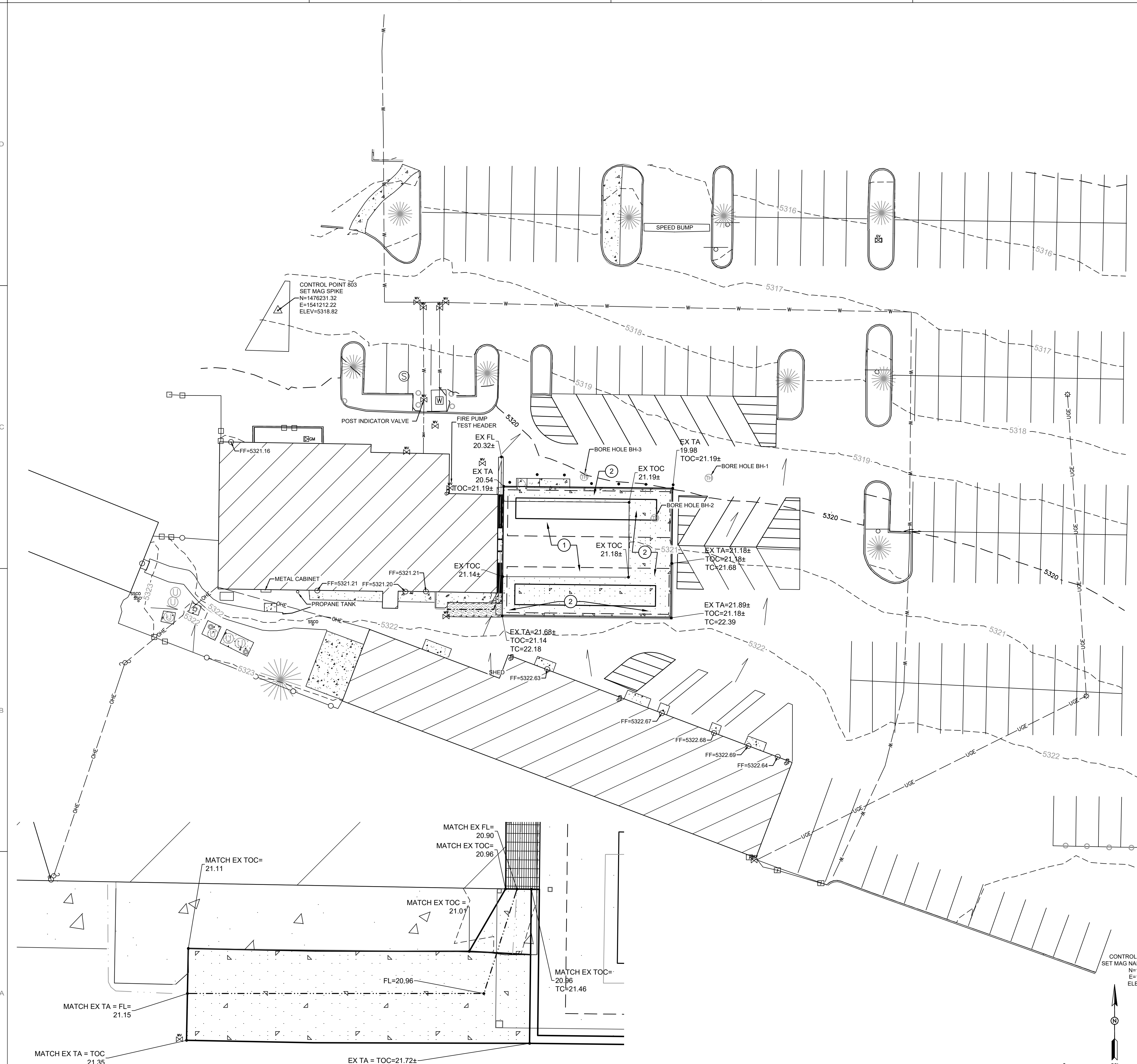


2 RAMP PLAN
SCALE: 1"=5'

SMITH ENGINEERING
Solutions for Today...
Vision for Tomorrow
2201 San Pedro Dr NE
Building 4, Suite 200
Albuquerque, NM 87110
Phone: 505-884-0700
www.smithengineering.pro

<p>CITY OF ALBUQUERQUE DEPARTMENT OF MUNICIPAL DEVELOPMENT</p>	
PROJECT TITLE: GIBSON MEDICAL CENTER, CHILLER REPLACEMENT	
DRAWING TITLE: SITE LAYOUT PLAN	
Design Review Committee	City Engineer Approval
Mo./Day/Yr.	Mo./Day/Yr.
PERMIT SET	City Project No. P7215.01 NTP#18
	Zone Map No. M-18-Z
	DWG. C-101
	Sheet 4 OF 27

AS-BUILT INFORMATION	
CONTRACTOR	DATE
WORK STARTED BY	DATE
FIELD ACCEPTANCE BY	DATE
FIELD CHECKED BY	DATE
DRAWN BY	DATE
CHECKED BY	DATE
MICRO-FILM INFORMATION	
RECORDED BY	DATE
NO.	
SURVEY INFORMATION	
FIELD NOTES	DATE
NO.	BY
REVISIONS	By
No.	Date
DESIGN	
DATE: 05/27/22	DESIGNED BY: N.P.
DATE: 05/27/22	DRAWN BY: J.P.
DATE: 05/27/22	CHECKED BY: N.P.

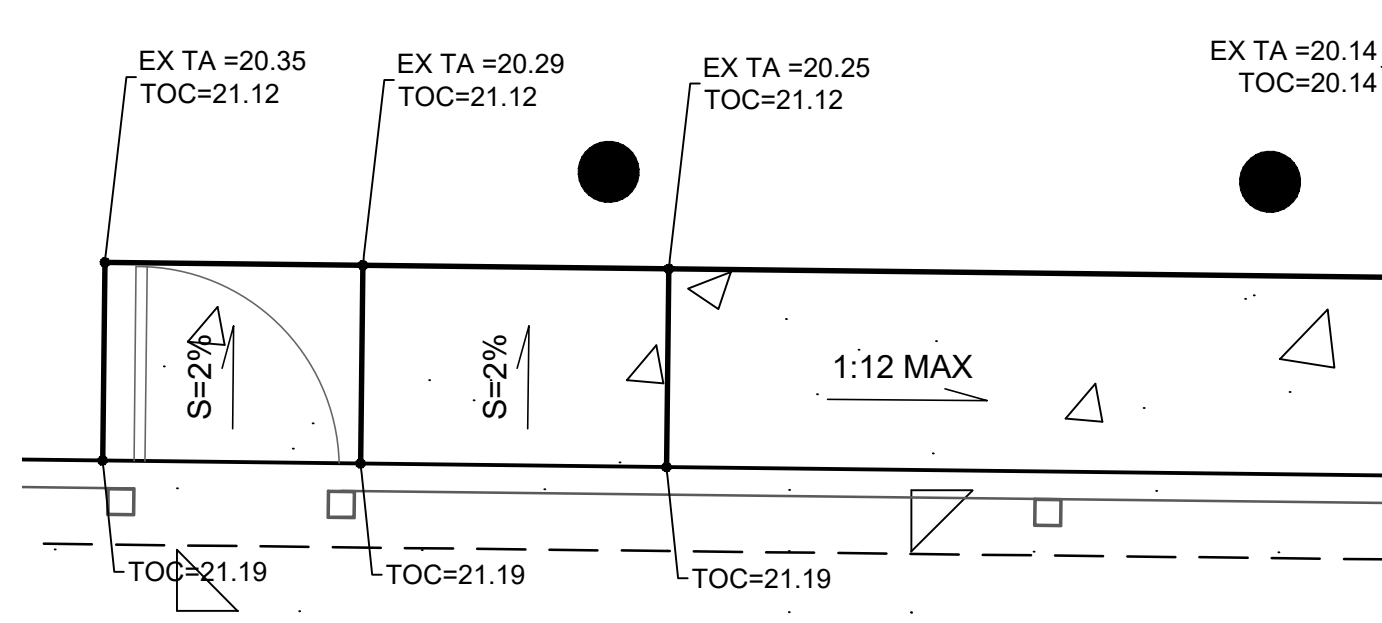


KEYED NOTES

- APPROXIMATE CONCRETE FINISHED PAD ELEVATION = 21.19±.
- NEW CONCRETE FINISHED PAD ELEVATION TO MATCH EXISTING. SEE SHEET C-401 FOR DOWEL DETAIL FROM EXISTING TO NEW CONCRETE PAD.

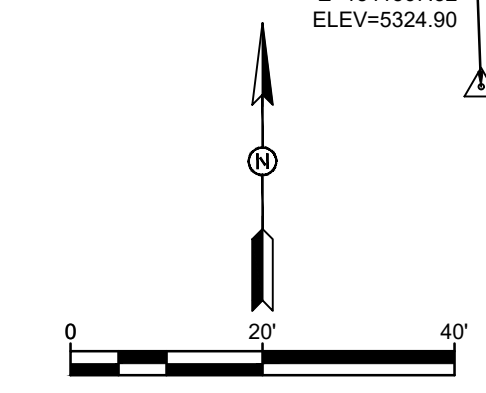
LEGEND

- TA TOP OF ASPHALT
- FL FLOWLINE
- TC TOP OF CURB
- TOC TOP OF CONCRETE
- EX EXISTING
- FP FINISHED PAD
- DIRECTION OF FLOW



2 ENLARGED RAMP GRADING PLAN
SCALE: 1"=5'

1 ENLARGED VALLEY GUTTER PLAN
SCALE: 1"=5'



AS-BUILT INFORMATION	
CONTRACTOR	DATE
WORK STARTED BY	DATE
FIELD ACCEPTANCE BY	DATE
FIELD CHECKED BY	DATE
DRAWN BY	DATE
CHECKED BY	DATE
RECORDED BY	DATE
NO.	

SURVEY INFORMATION	
FIELD NOTES	DATE
NO.	BY

SEAL	
NO.	DATE



REVISIONS	
No.	Date
By	Remarks
DESIGN	
DESIGN	
DESIGNED BY: N.P.	DATE: 05/27/22
DRAWN BY: J.P.	DATE: 05/27/22
CHECKED BY: N.P.	DATE: 05/27/22

SMITH ENGINEERING
Solutions for Today...
Vision for Tomorrow
2201 San Pedro Dr NE
Building 4, Suite 200
Albuquerque, NM 87110
Phone: 505-884-0700
www.smithengineering.pro

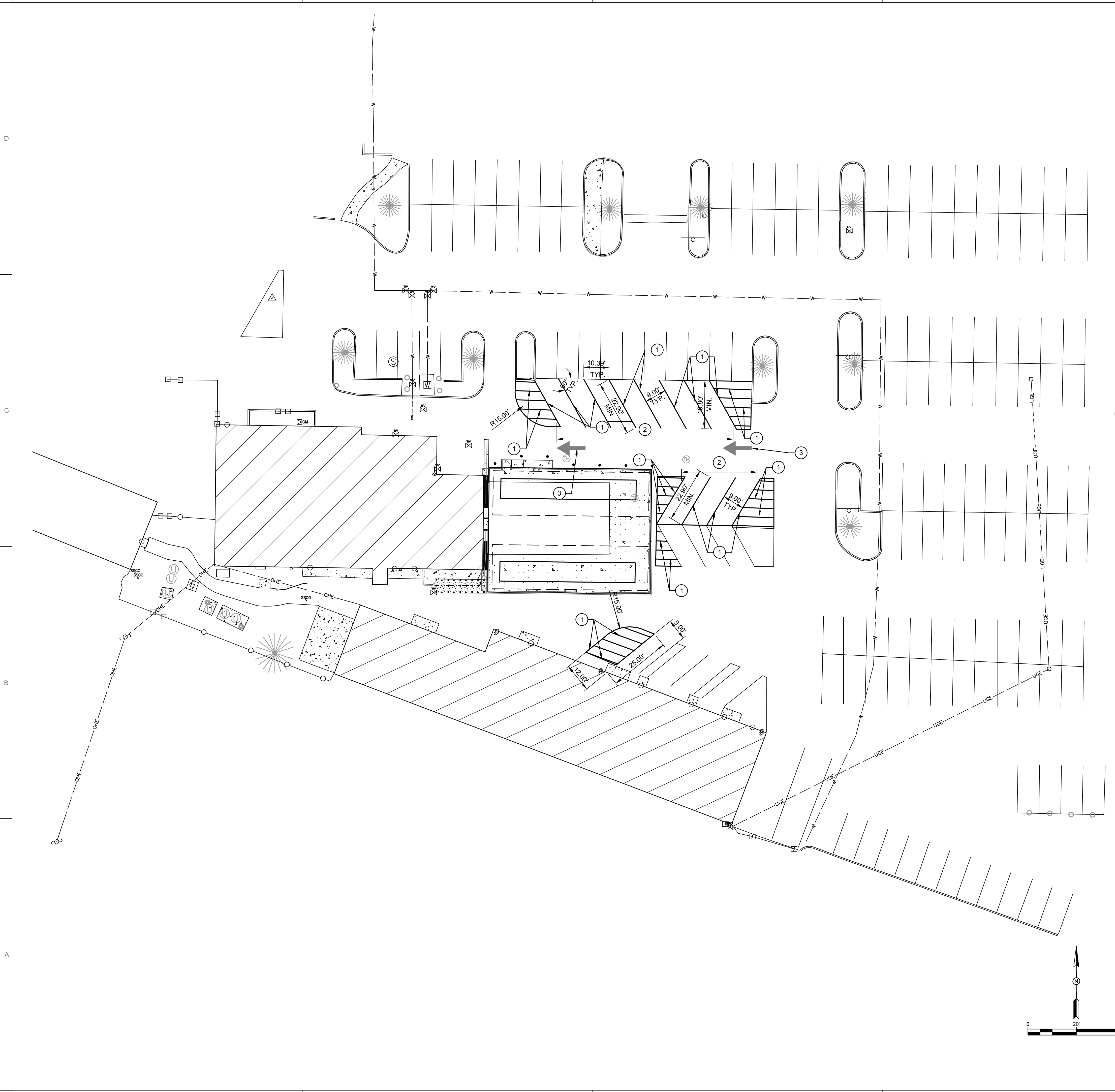
CITY OF ALBUQUERQUE
DEPARTMENT OF MUNICIPAL DEVELOPMENT

PROJECT TITLE: **GIBSON MEDICAL CENTER, CHILLER REPLACEMENT**

DRAWING TITLE: **SITE GRADING PLAN**

Design Review Committee	City Engineer Approval	Mo./Day/Yr.	Mo./Day/Yr.

PERMIT SET City Project No. **P7215.01 NTP#18** Zone Map No. **M-18-Z** DWG. **C-201** Sheet **5 OF 27**



- ### KEYED NOTES
- PAINT 4" SOLID WHITE STRIPE.
 - 60 DEGREE PARKING STALLS. CONTRACTOR IS RESPONSIBLE FOR ALL RE-STRIPING DUE TO CONSTRUCTION ACTIVITY.
 - THERMO PLASTIC SYMBOL ARROW SYMBOL.

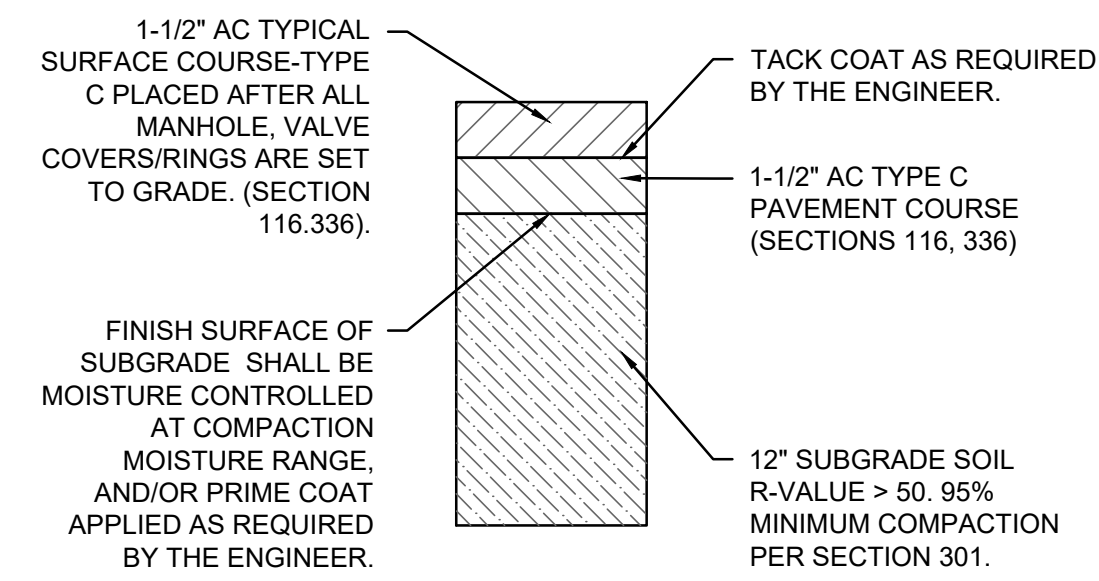
CONTRACTOR		DATE	
WORK STARTED BY		DATE	
FIELD ACCEPTANCE BY		DATE	
FIELD SUPERVISOR		DATE	
DRAWN BY		DATE	
CHECKED BY		DATE	
RECORDED BY		DATE	
NO.		NO.	

SURVEY INFORMATION		BENCH MARKS	
NO.	BY	DATE	

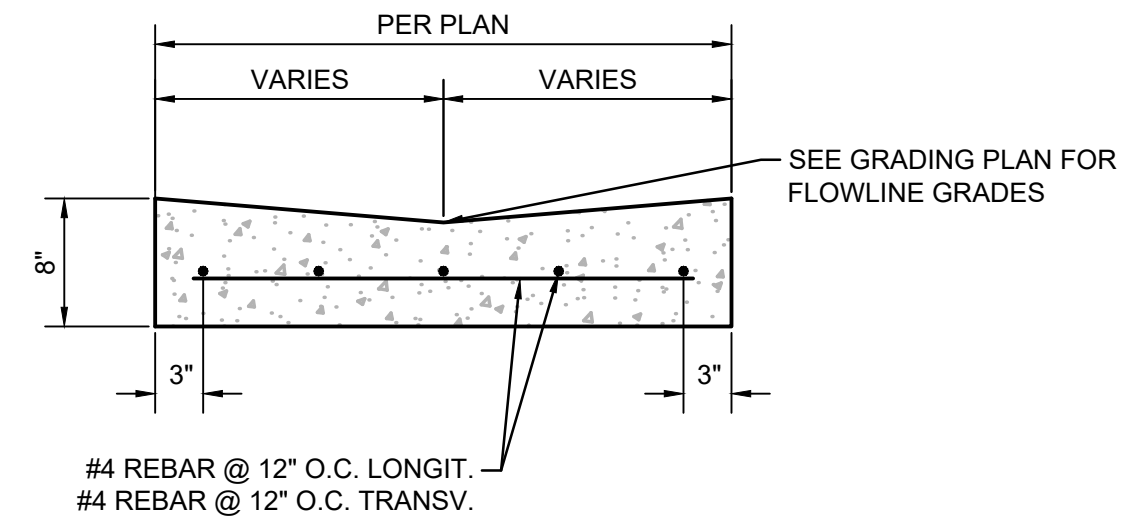
REVISIONS	DESIGN	DATE	05/27/22
DESIGN		DATE	05/27/22
		DATE	05/27/22

DESIGNED BY:	N.P.	DATE:	05/27/22
DRAWN BY:	J.P.	DATE:	05/27/22
CHECKED BY:	N.P.	DATE:	05/27/22

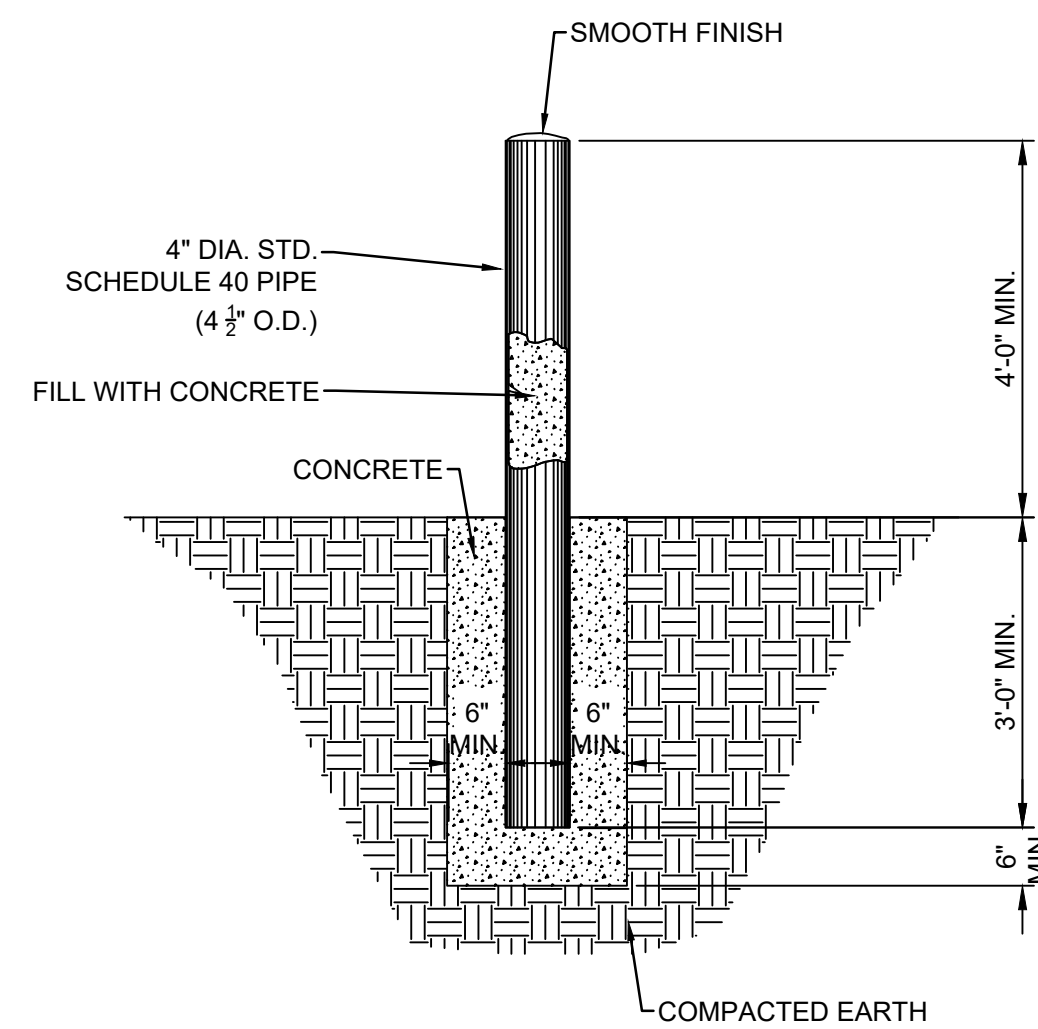
 CITY OF ALBUQUERQUE DEPARTMENT OF MUNICIPAL DEVELOPMENT			
PROJECT TITLE: GIBSON MEDICAL CENTER, CHILLER REPLACEMENT			
DRAWING TITLE: STRIPING PLAN			
Design Review Committee	City Engineer Approval	Mo./Day/Yr.	
PERMIT SET	City Project No. P7215.01 NTP#18	Zone Map No. M-18-Z	DWG. C-301 Sheet 6 OF 27



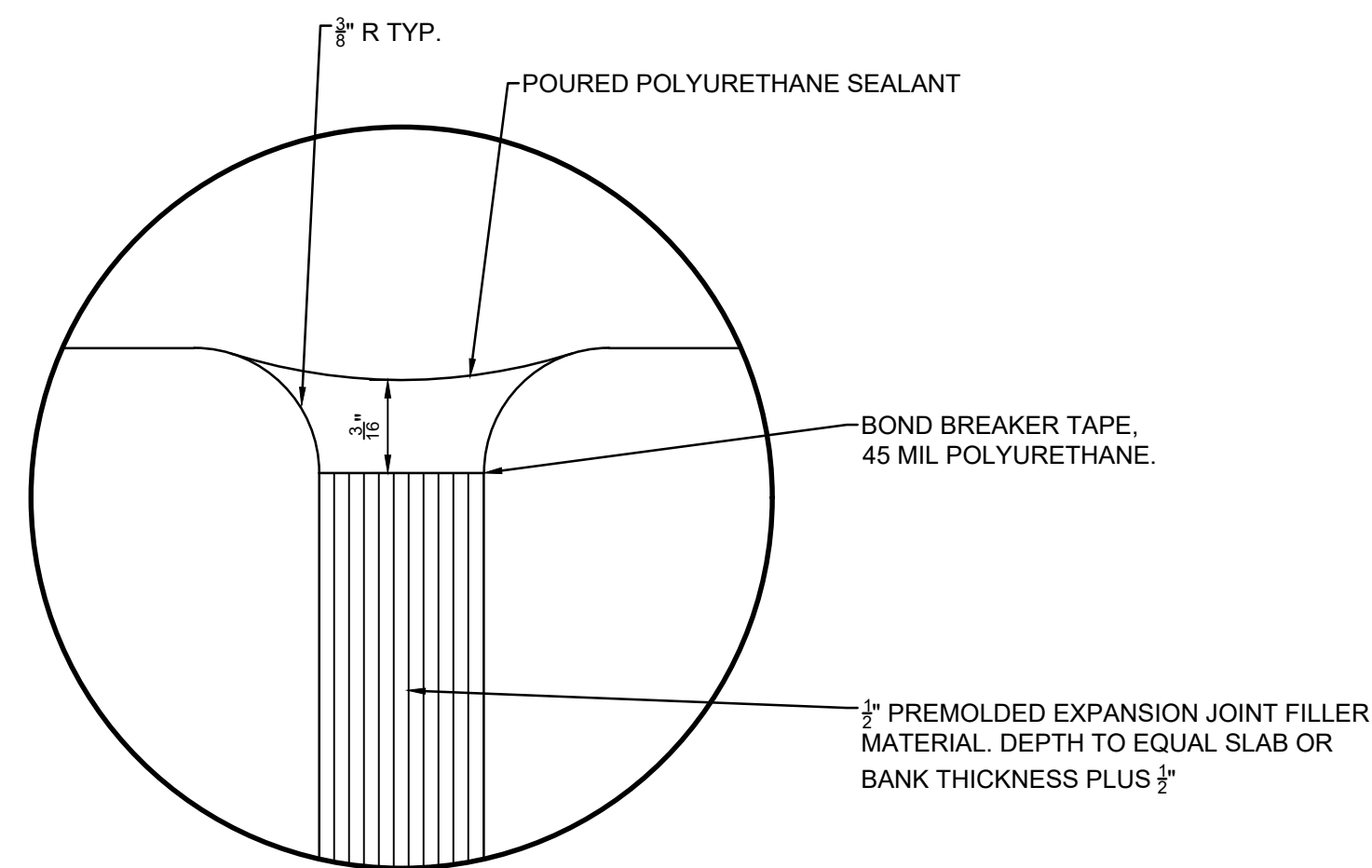
1 TYPICAL PAVEMENT SECTION
NTS



3 VALLEY GUTTER DETAIL
NTS



2 BOLLARD DETAIL
NTS



4 EXPANSION JOINT DETAIL
NTS

AS-BUILT INFORMATION	
CONTRACTOR	DATE
WORK STARTED BY	DATE
WORK STOPPED BY	DATE
FIELD ACCEPTANCE BY	DATE
FIELD CHECKED BY	DATE
DRAWN BY	DATE
CHECKED BY	DATE
MICRO-FILM INFORMATION	
RECORDED BY	DATE
NO.	DATE

BENCH MARKS	
NO.	DATE

SURVEY INFORMATION	
FIELD NOTES	DATE
NO.	BY



SEAL	
NO.	DATE

REVISIONS	
No.	DATE
REMARKS	By
DESIGN	DESIGN
DESIGNED BY: N.P.	DATE: 05/27/22
DRAWN BY: J.P.	DATE: 05/27/22
CHECKED BY: N.P.	DATE: 05/27/22

SMITH ENGINEERING
Solutions for Today...
Vision for Tomorrow
2201 San Pedro Dr NE
Building 4, Suite 200
Albuquerque, NM 87110
Phone: 505-884-0700
www.smithengineering.pro

CITY OF ALBUQUERQUE
DEPARTMENT OF MUNICIPAL DEVELOPMENT

PROJECT TITLE: **GIBSON MEDICAL CENTER, CHILLER REPLACEMENT**

DRAWING TITLE: **CIVIL DETAILS**

Design Review Committee	City Engineer Approval	Mo./Day/Yr.	

PERMIT SET City Project No. P7215.01 NTP#18 Zone Map No. M-18-Z DWG. C-401 Sheet 7 OF 27