

**MATURE TREE COVERAGE**  
SCALE: 1 inch = 40 ft.

**LANDSCAPE MATERIALS & DATA LIST - For Both Sheets**

NOTE: ALL PLANTS LISTED ARE FROM THE CITY OF ALBUQUERQUE XERISCAPES PLANT LIST PUBLICATION

QTY.	PLANT NAME	WATER USE	MINIMUM INSTALLED SIZE	MATURE HEIGHT/ SPREAD	MATURE COVERAGE EACH
<b>SHADE TREES</b>					
7	DESERT LIVE OAK - <i>Quercus turbinella</i>	LOW	2" cal. B/B	20' ht. X 25' spr.	490 SF
1	EMORY OAK - <i>Quercus emoryi</i>	MEDIUM	2" cal. B/B	35' ht. X 35' spr.	962 SF
2	SOUTHERN LIVE OAK - <i>Quercus virginiana</i>	MEDIUM	2" cal. B/B	35' ht. X 40' spr.	962 SF
4	CRIMSON SPIRE OAK - <i>Quercus x bimundorum 'Crimschmidt'</i>	MEDIUM	2" cal. B/B	45' ht. X 15' spr.	185 SF
<b>EVERGREEN TREES</b>					
4	SKYROCKET JUNIPER - <i>Juniperus scopulorum 'Skyrocket'</i> **	LOW	6' ht. B/B or cont.	40' ht. X 12' spr.	112 SF
<b>SHRUBS &amp; GRASSES</b>					
24	BLUE GRAMA GRASS - <i>Bouteloua gracilis</i>	LOW	# 1 cont.	1.5' ht. X 1.5' spr.	0 SF
21	REED GRASS - <i>Calamagrostis x acutiflora 'Karl Foerster'</i>	LOW	# 5 cont.	5' ht. X 2' spr.	3 SF
25	CURL-LEAF MOUNTAIN MAHOGANY - <i>Cercocarpus ledifolius**</i>	LOW	# 7 cont.	15' ht. X 15' spr.	175 SF
15	BUFFALO JUNIPER - <i>Juniperus sabina 'Buffalo'</i> **	LOW	# 5 cont.	1' ht. X 6' spr.	20 SF
23	ENGLISH LAVENDER - <i>Lavandula angustifolia**</i>	MEDIUM	# 5 cont.	3' ht. X 3' spr.	7 SF
10	ALGERITA - <i>Mahonia haematocarpa (syn Berberis haematocarpa)**</i>	LOW	# 7 cont.	8' ht. X 10' spr.	78 SF
9	PINK MUHLY GRASS - <i>Muhlenbergia capillans</i>	MEDIUM	# 5 cont.	3' ht. X 3' spr.	7 SF
9	MUHLY GRASS - <i>Muhlenbergia lindheimeri</i>	LOW	# 5 cont.	5' ht. X 5' spr.	20 SF
2	LYNN'S LEGACY - <i>Leucophyllum langmaniae 'Lynn's Legacy'</i> **	LOW	# 5 cont.	6' ht. X 6' spr.	28 SF
4	TEXAS RANGER - <i>Leucophyllum frutescens**</i>	LOW	# 5 cont.	4' ht. X 4' spr.	15.5 SF
17	AUTUMN SAGE - <i>Salvia greggii</i>	LOW	# 5 cont.	3' ht. X 3' spr.	7 SF
7	LAVENDER COTTON - <i>Santolina chamaecyparissus**</i>	LOW	# 5 cont.	1.5' ht. X 3' spr.	7 SF
29	LITTLE BLUESTEM - <i>Schizachyrium scoparium</i>	LOW	# 2 cont.	3' ht. X 1.5' spr.	0 SF
<b>PERENNIALS</b>					
12	CATMINT - <i>Nepeta x faassenii 'Walker's Low'</i>	LOW	# 1 cont.	2' ht. X 2' spr.	3 SF

\*\* DENOTES EVERGREEN SHRUB

**GENERAL LANDSCAPE REQUIREMENTS**

- DIAMETERS OF PLANT MATERIALS AS DRAWN ARE REPRESENTATIVE OF PLANTS AT OR NEAR MATURITY RATHER THAN AT INITIAL PLANTING.
- THE PLANT LIST IS INTENDED AS A GUIDE FOR THE LANDSCAPE CONTRACTOR. IN THE EVENT OF DISCREPANCY BETWEEN THE NUMBER OF PLANTS ON THE PLANT LIST AND ON THE DRAWING, THE GREATER NUMBER SHALL APPLY.
- ADJUSTMENTS IN LOCATIONS OF PLANT MATERIALS MAY BE NECESSARY DUE TO NEW OR EXISTING UTILITIES OR SITE OBSTRUCTIONS. ADVISE ARCHITECT'S REPRESENTATIVE BEFORE ADJUSTMENTS ARE MADE.
- LANDSCAPE CONTRACTOR SHALL COORDINATE INSTALLATION SEQUENCE WITH THE IRRIGATION CONTRACTOR.
- ALL SHRUBS OCCURRING IN CONTINUOUS ROW OR FORMAL ARRANGEMENT SHALL HAVE UNIFORM HEIGHT, SPREAD AND HABIT OF GROWTH. FOR PERENNIAL LOCATIONS, FILL AREA WITH QUANTITY OF PLANTS DESIGNATED, EVENLY SPACED.
- LANDSCAPING WILL NOT INTERFERE WITH THE CLEAR SIGHT REQUIREMENTS THEREFORE TREES AND OTHER PLANTS BETWEEN 3 AND 6 FEET TALL WILL NOT BE ACCEPTABLE WITHIN THE DESIGNATED AREAS.
- TREES AND SHRUBS SHALL BE NURSERY GROWN UNLESS OTHERWISE APPROVED AND BE HEALTHY AND VIGOROUS PLANTS, FREE FROM DEFECTS, DECAY, DISFIGURING ROOTS, SUN SCALD, INJURIES, ABRASIONS OF THE BARK, PLANT DISEASES, INSECT PEST EGGS, BORERS AND ALL FORMS OF INFESTATIONS OF OBJECTIONABLE DISFIGUREMENTS. PLANTS SHALL BE IN ACCORDANCE WITH THE CURRENT AMERICAN ASSOCIATION OF NURSERYMEN'S STANDARDS AND CONFORM IN GENERAL TO REPRESENTATIVE SPECIES.
- BALLED AND BURLAPPED OR CONTAINER TREES AND SHRUBS SHOULD BE DUG WITH FIRM, NATURAL BALLS OF EARTH OF ADEQUATE SIZE AS SPECIFIED BY THE AMERICAN ASSOCIATION OF NURSERYMEN. "AMERICAN STANDARD FOR NURSERY STOCK" WITH THE BALLS SECURELY WRAPPED.
- A MINIMUM OF 8" DEPTH OF NEW TOPSOIL SHALL BE PLACED IN ALL NEW PLANT BED AREAS BY LANDSCAPE CONTRACTOR PRIOR TO PLANT INSTALLATION. BACKFILL ALL SHRUBS AND TREES WITH BACKFILL MIX OF ONE PART COMPOST TO THREE PARTS TOPSOIL.
- FURNISH AND PLACE A MIN. 3" DEPTH OF ROCK MULCH- "BUILDOLGY BROWN CRUSHED FINES" OR APPROVED EQUAL IN DISTURBED AREAS WITHIN PROJECT LIMITS AS NOTED ON CIVIL DRAWINGS; INCLUDING OUT TO PAVEMENT EDGES. REFER TO CIVIL DRAWINGS AND VERIFY EXTENT WITH PROJECT ARCHITECT'S REPRESENTATIVE.
- THE LANDSCAPE CONTRACTOR SHALL MAINTAIN ALL NEW PLANTS, FOR A MIN. OF THE 30 DAYS AFTER ACCEPTANCE OF THE WORK. BY THE PROJECT ARCHITECT'S REPRESENTATIVE. THIS INCLUDES REGULAR WATERING AND WEEDING.
- THE LANDSCAPE CONTRACTOR SHALL GUARANTEE ALL PLANT MATERIALS FOR ONE-YEAR FROM DATE OF ACCEPTANCE. PRIOR TO END OF WARRANTY PERIOD CONTRACTOR SHALL REPLACE ALL TREES, SHRUBS OR PLANTINGS NOT ALIVE OR IN A HEALTHY GROWING CONDITION.

**LANDSCAPE CODE DATA**

LANDSCAPE AREA COVERAGE:  
TOTAL SITE AREA 1.155 AC or 50,311.8 SF  
BUILDING AREA (Building Envelope) -3,500 SF  
NET AREA 46,811.8 SF @ 15% = 7,021.77 SF REQUIRED  
15,776± SF AS SHOWN

LANDSCAPE COVERAGE:  
TREE CANOPIES 4 PLANTS SHALL COVER A MIN. OF 75% WITH A MIN. 25% OF GROUND-LEVEL PLANTS (SHRUBS, ORNAMENTAL GRASSES, ETC.)  
7,021.77 SF @ 75% = 5,266.33 SF REQUIRED  
TREE CANOPY ON-SITE COVERAGE 5,944 SF AS SHOWN (113%)  
GROUND-LEVEL PLANT COVERAGE 6,282 SF AS SHOWN (119%)

LANDSCAPE TURF:  
NO MORE THAN 10% OF REQUIRED LANDSCAPE AREAS SHALL BE TURF GRASS SPECIES REQUIRING IRRIGATION FOR SURVIVAL AFTER FIRST 2 GROWING SEASONS.  
NO TURF GRASS PROPOSED AS SHOWN

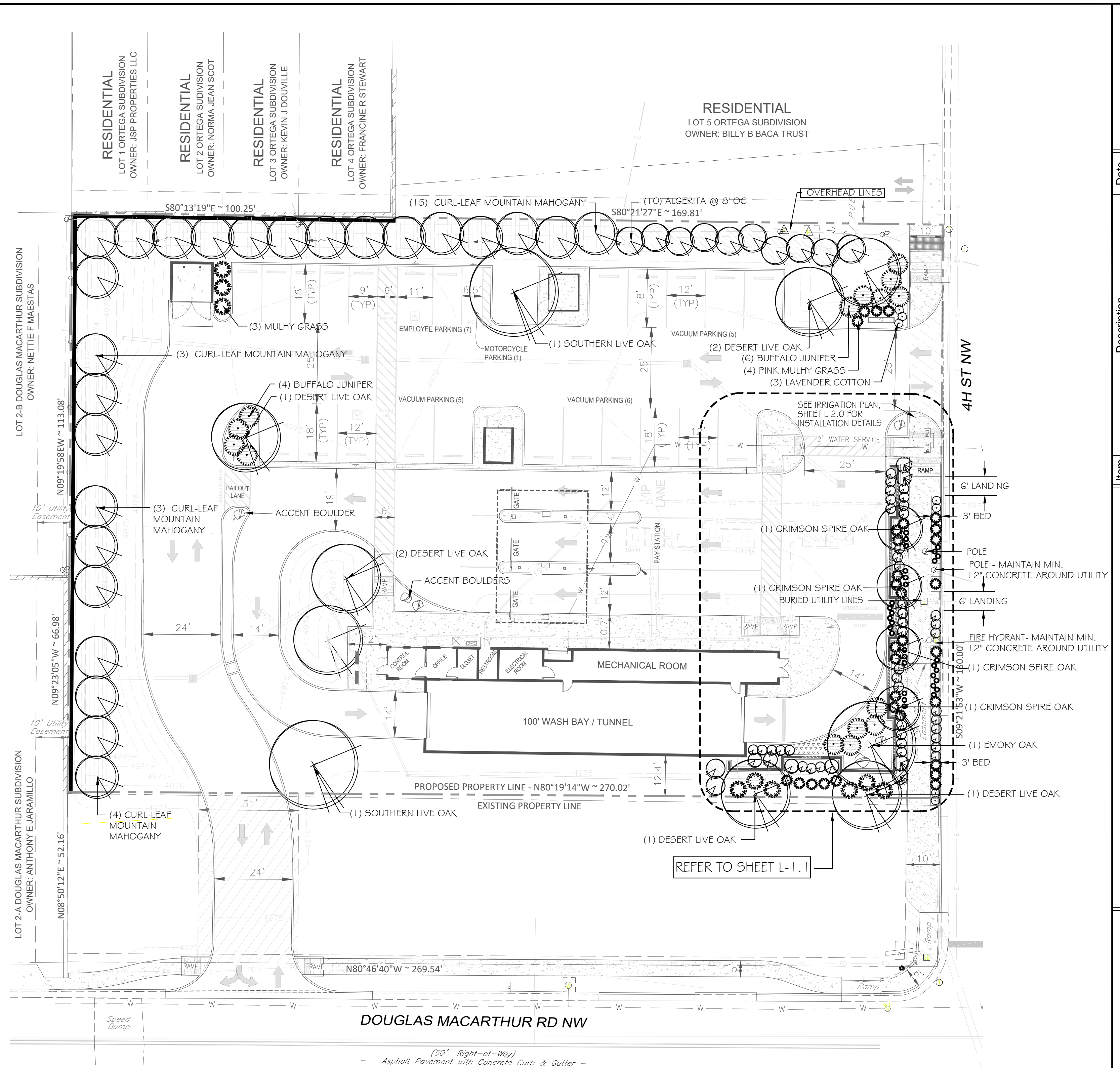
PARKING LOT AREA:  
AT LEAST 10% OF PARKING LOT AREA WITH 50 OR FEWER PARKING SPACES SHALL BE LANDSCAPED.  
TOTAL PARKING AREA (STACKING LANES) 5049 SF @ 10% = 505 SF REQUIRED

LANDSCAPE AREA: 725± SF AS SHOWN

PARKING LOT TREES:  
ONE TREE PER 10 SPACES REQUIRED  
24 TOTAL PARKING SPACES/ 10 = 2.4 or 3 TREES REQUIRED

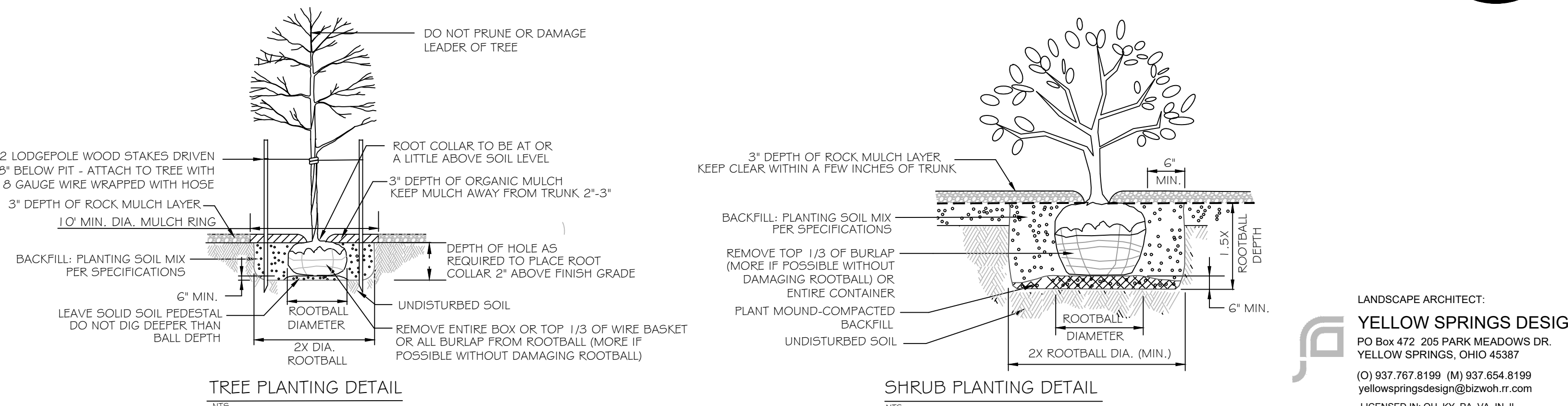
STREET TREES:  
ONE TREE PER 35 LF REQUIRED  
180 LF/35 = 5.14 or 6 TREES REQUIRED

SHADE TREES PLANTED APPROXIMATELY 25 FEET ON-CENTER ARE REQUIRED ALONG ALL REQUIRED PEDESTRIAN WALKWAYS. IF THE WALKWAY IS LESS THAN 25 FEET LONG, AT LEAST ONE TREE IS REQUIRED, OF WHERE THERE IS INSUFFICIENT SPACE FOR A TREE, A TRELLIS OF AT LEAST 8 FEET HIGH FOR AT LEAST 5 FEET ALONG THE WALKWAY SHALL BE PROVIDED.



**LANDSCAPE PLAN**  
SCALE: 1 inch = 20 ft.

**PLANT INSTALLATION DETAILS**



Know what's below. Call before you dig.

**TAKE CAUTION DURING EXCAVATION.**  
UNLESS OTHERWISE SPECIFIED, ALL UTILITIES SHALL BE MARKED BY THE UTILITY OWNERS. NOTIFY 811 IN ADVANCE OF DIGGING TO HAVE LINES MARKED.



Date	Description	Item

SITE DEVELOPMENT PLANS FOR  
**CHAMPION XPRESS CAR WASH**  
5307 4<sup>TH</sup> STREET NW  
CITY OF ALBUQUERQUE, BERNALILLO COUNTY, NEW MEXICO



Design: REB Proj:  
Draw: REB Dwg:  
Check: REB Tab:  
Scale: 1"=20'

Date: 09.14.2023

Sheet: **LANDSCAPE PLAN**

Sheet No.: **L-1.0**

LANDSCAPE ARCHITECT:  
**YELLOW SPRINGS DESIGN**  
PO Box 472 205 PARK MEADOWS DR.  
YELLOW SPRINGS, OHIO 45387  
(O) 937.767.8199 (M) 937.654.8199  
yellowspringsdesign@b2bwh.com  
LICENSED IN: OH, KY, PA, VA, IN, IL, MI, MO, TX, OK, KS, IA, MN, AZ, CO & UT



