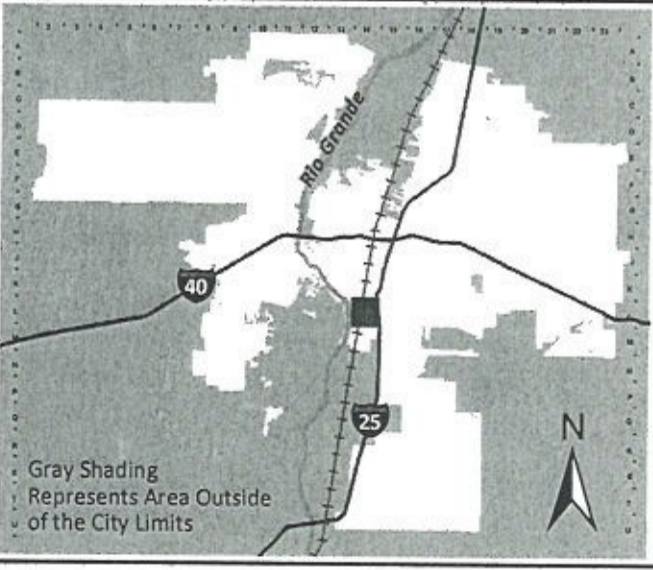


For more details about the Integrated Development Ordinance visit: <http://www.cabq.gov/planning/codes-policies-regulations/integrated-development-ordinance>

IDO Zone Atlas May 2018



IDO Zoning information as of May 17, 2018
The Zone Districts and Overlay Zones
are established by the
Integrated Development Ordinance (IDO).



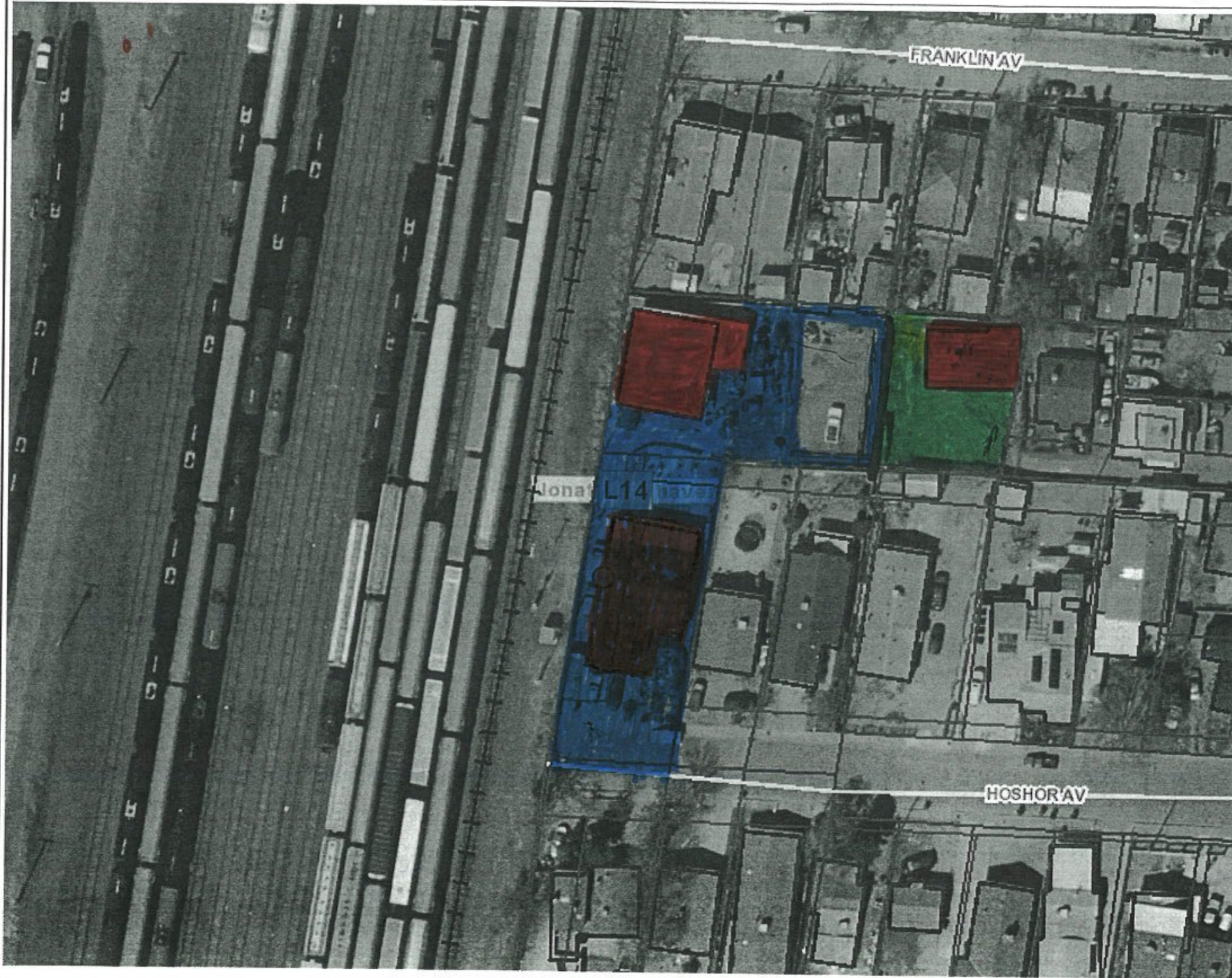
Zone Atlas Page:
L-14-Z

- Easement
- Escarpment
- Petroglyph National Monument
- Areas Outside of City Limits
- Airport Protection Overlay (APO) Zone
- Character Protection Overlay (CPO) Zone
- Historic Protection Overlay (HPO) Zone
- View Protection Overlay (VPO) Zone

0 250 500 1,000 Feet



City of Albuquerque



Legend

- City Parcels
- Zone Grid
- Primary Streets**
 - Freeway
 - Principal Arterial
 - Minor Arterial
 - Local Streets
 - + BN and SF Railroad
- Bernalillo County Parcels
- Building Footprints
- Code Enforcement Areas
- Master Development Plans
- Municipal Limits**
 - Corrales
 - Edgewood
 - Los Ranchos
 - Rio Rancho
 - Tijeras
 - UNINCORPORATED

Notes

150 0 75 150 Feet

WGS_1984_Web_Mercator_Auxiliary_Sphere
9/13/2021 © City of Albuquerque

1: 901

The City of Albuquerque ("City") provides the data on this website as a service to the public. The City makes no warranty, representation, or guaranty as to the content, accuracy, timeliness, or completeness of any of the data provided at this website. Please visit <http://www.cabq.gov/abq-data/abq-data-disclaimer-1> for more information.

THIS MAP IS NOT TO BE USED FOR NAVIGATION

9452

739

NR-GM

EAST SAN JOSE
COMM CTR & PARK
220A1
NR-PO-A

UBALDO
SANCHEZ

ANDERSON
ANDERSON

TORREON
R-1A

EAST SAN JOSE
ELEMENTARY SCHOOL
A

THAXTON
AV

R-1B

HOSHOR
HOSHOR AV

RJB
ADDN

R-1B

R-1B

ENGLEWOOD

HANILY

R-1B

MX-H
GURULE-T A

MX-H

MX-H

MX-H

MX-H

Support Airspace
Protection Sub-area
R-1B

SOUTH SAN JOSE PARISH

1007062

AT & S RAILWAY PROPERTY

M

ORTEGA

FRANCES & SHARON PADILLA

HUMANA

AV

AV

AV

AV

AV

AV

AV

WILLIAM

FUNKLE

JOHN

JOHN

JOHN

JOHN

JOHN

JOHN

JOHN

JOHN

JOHN

JOHN

JOHN

JOHN

JOHN

JOHN

JOHN

JOHN

JOHN

JOHN

JOHN

JOHN

JOHN

JOHN

JOHN

JOHN

JOHN

JOHN

JOHN

JOHN

JOHN

JOHN

JOHN

JOHN

JOHN

JOHN

JOHN

JOHN

JOHN

JOHN

JOHN

JOHN

JOHN

JOHN

JOHN

JOHN

JOHN

JOHN

JOHN

JOHN

JOHN

JOHN

JOHN

JOHN

JOHN

JOHN

JOHN

JOHN

JOHN

JOHN

JOHN

JOHN

JOHN

JOHN

JOHN

JOHN

JOHN

JOHN

JOHN

JOHN

JOHN

JOHN

JOHN

JOHN

JOHN

JOHN

JOHN

JOHN

JOHN

JOHN

JOHN

JOHN

JOHN

JOHN

JOHN

JOHN

JOHN

JOHN

JOHN

JOHN

JOHN

JOHN

JOHN

JOHN

JOHN

JOHN

JOHN

JOHN

JOHN

JOHN

JOHN

JOHN

JOHN

JOHN

JOHN

JOHN

JOHN

JOHN

JOHN

JOHN

JOHN