

ADMINISTRATIVE AMENDMENT

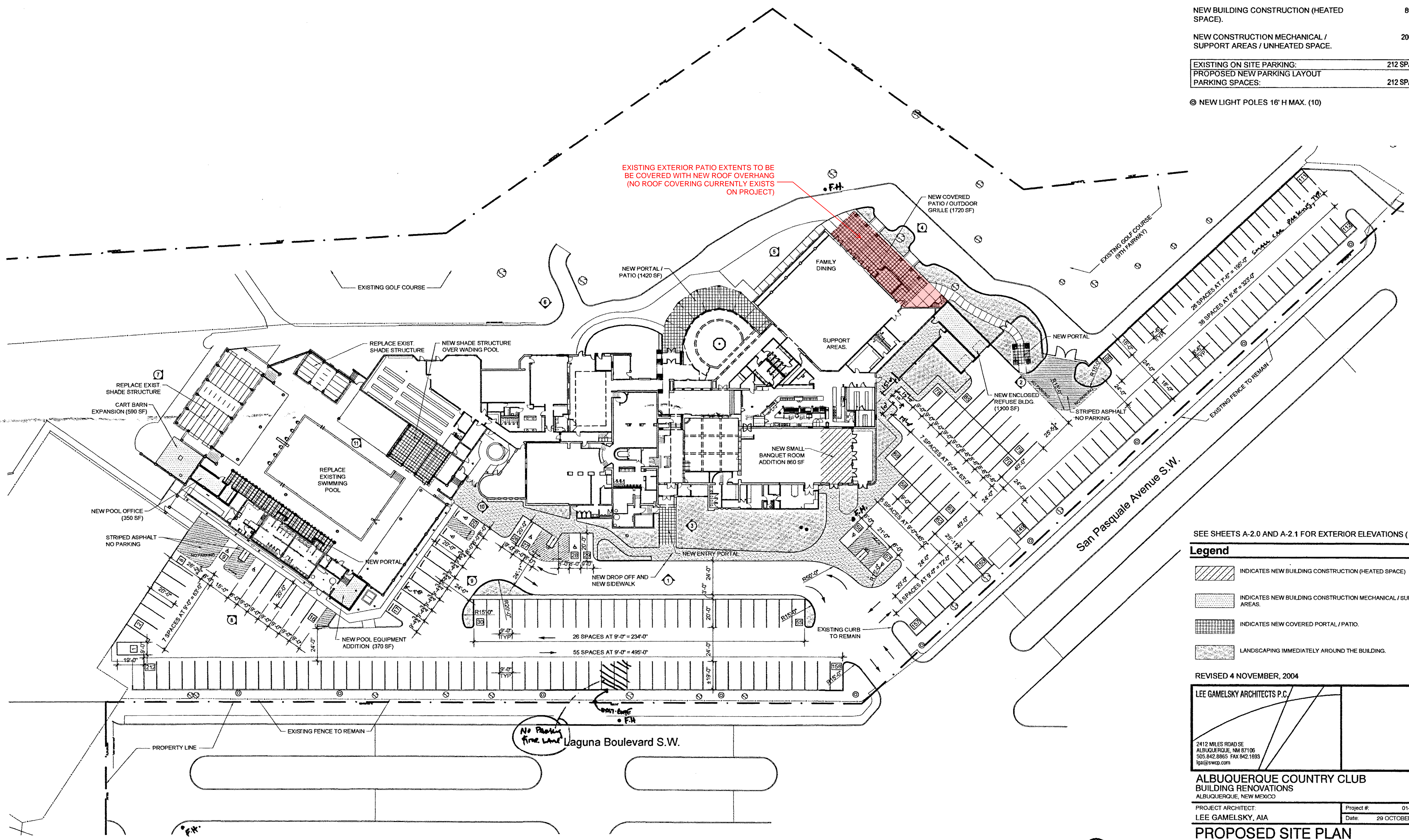
FILE #: _____ PROJECT #: _____

APPROVED BY

DATE

Area	
EXISTING BUILDING AREA:	44,157 SF
NEW BUILDING CONSTRUCTION (HEATED SPACE):	860 SF
NEW CONSTRUCTION MECHANICAL / SUPPORT AREAS / UNHEATED SPACE:	2060 SF
EXISTING ON SITE PARKING:	212 SPACES
PROPOSED NEW PARKING LAYOUT PARKING SPACES:	212 SPACES

© NEW LIGHT POLES 16' H MAX. (10)



SEE SHEETS A-2.0 AND A-2.1 FOR EXTERIOR ELEVATIONS (X)

- Legend**
- INDICATES NEW BUILDING CONSTRUCTION (HEATED SPACE)
 - INDICATES NEW BUILDING CONSTRUCTION MECHANICAL / SUPPORT AREAS.
 - INDICATES NEW COVERED PORTAL / PATIO.
 - LANDSCAPING IMMEDIATELY AROUND THE BUILDING.

REVISED 4 NOVEMBER, 2004

LEE GAMESKY ARCHITECTS P.C.	
2412 MILES ROAD SE ALBUQUERQUE, NM 87106 505.842.8865 FAX 842.1693 lga@sgwcp.com	

**ALBUQUERQUE COUNTRY CLUB
BUILDING RENOVATIONS**
ALBUQUERQUE, NEW MEXICO

PROJECT ARCHITECT:
LEE GAMESKY, AIA

Project # 01-03-P-2
Date: 29 OCTOBER, 2004

PROPOSED SITE PLAN

PROPOSED PARTIAL SITE PLAN: ALBUQUERQUE COUNTRY CLUB

By: SMO	Sheet 2 Of 4
File: ACC_AS-1_0_BASESITE.DWG	AS-1.0

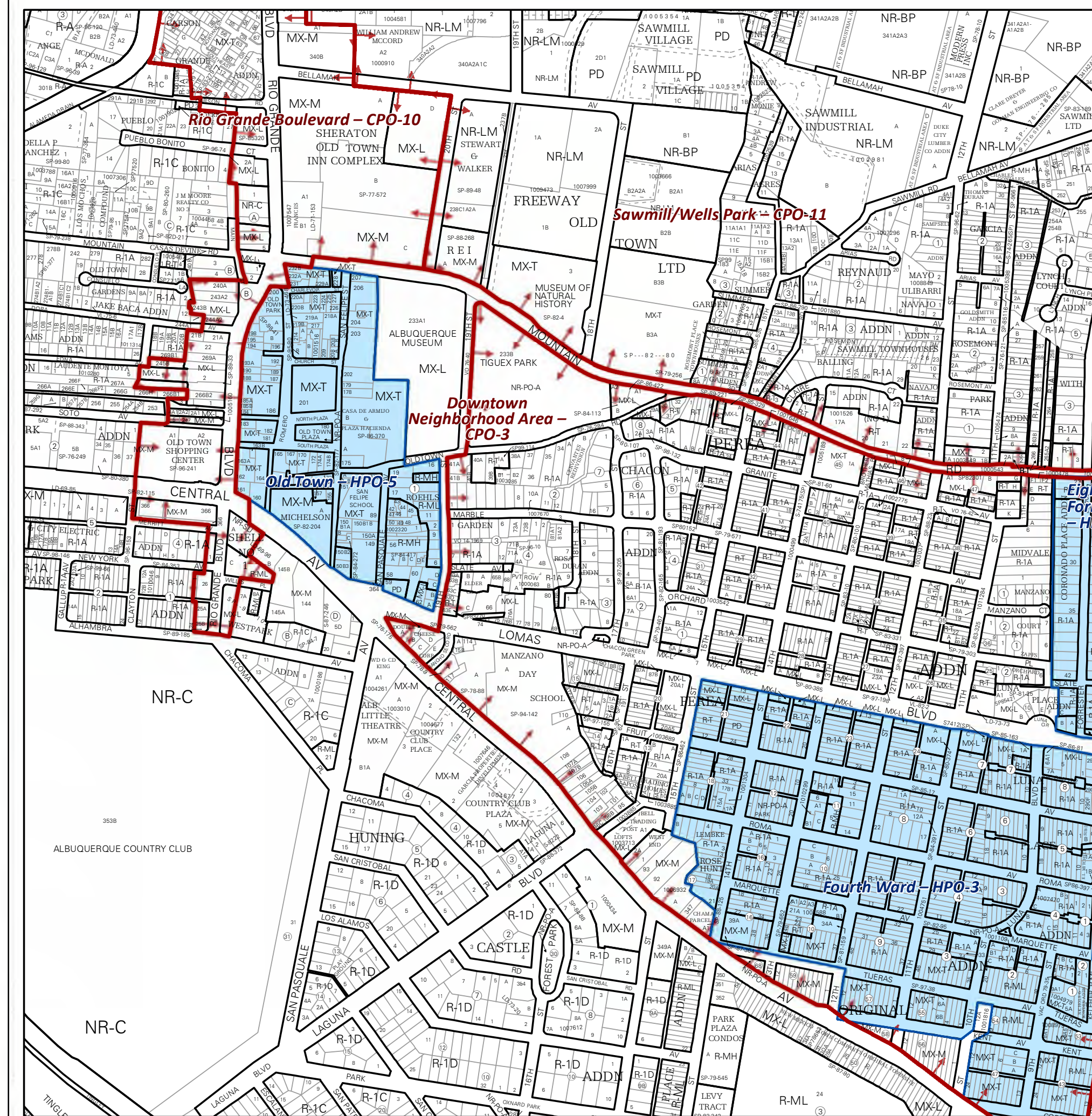


ARIA
 STUDIO CONSULTANTS, INC
 PO BOX 1515
 CEDAR CREST NM, 87008
 DANIEL@ARIASCINC.COM
 (505) 506-2314

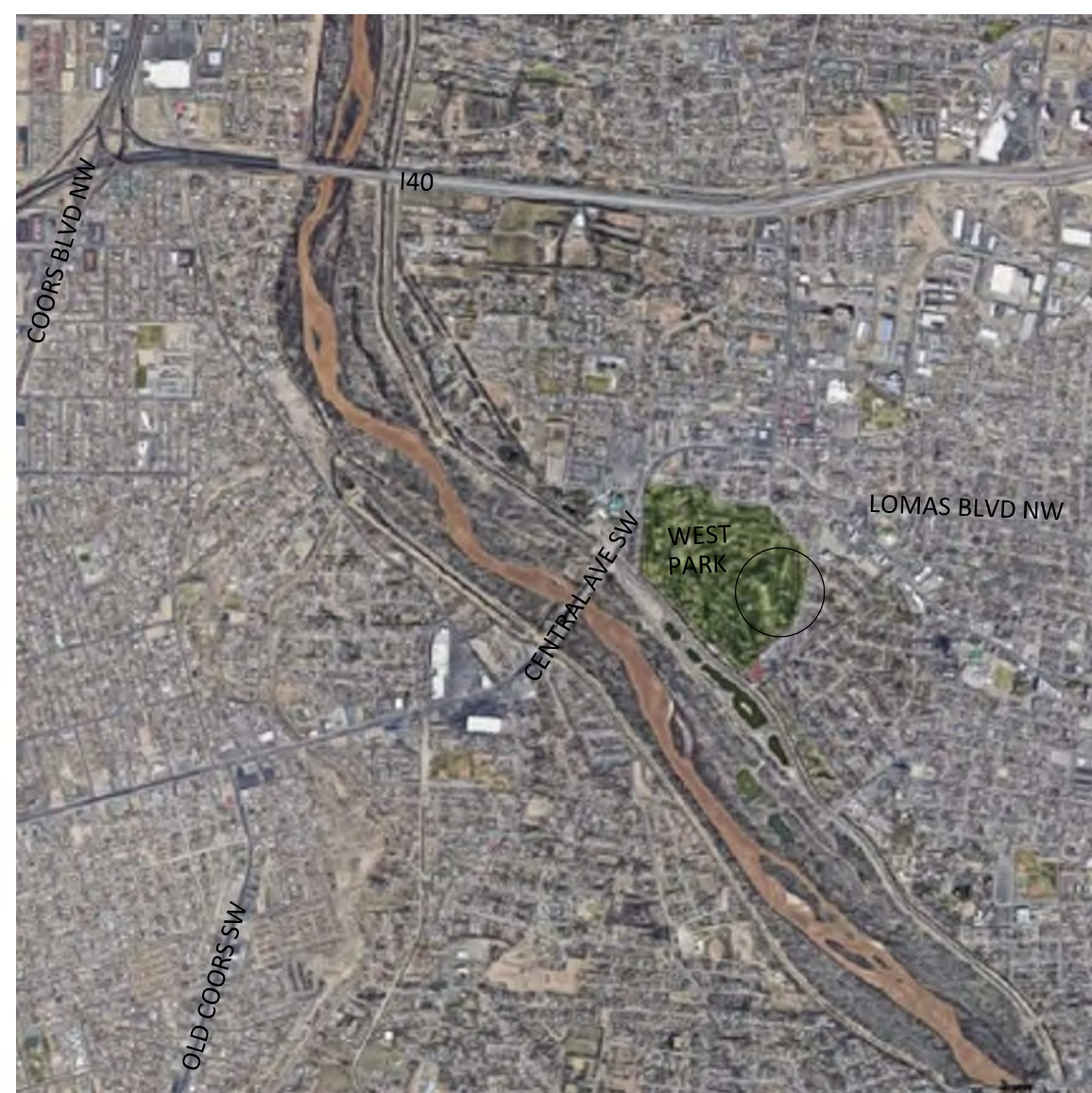
EB ENTERPRISE BUILDERS

8516 Paseo Alameda NE
 Albuquerque, NM 87113
 505.857.0050

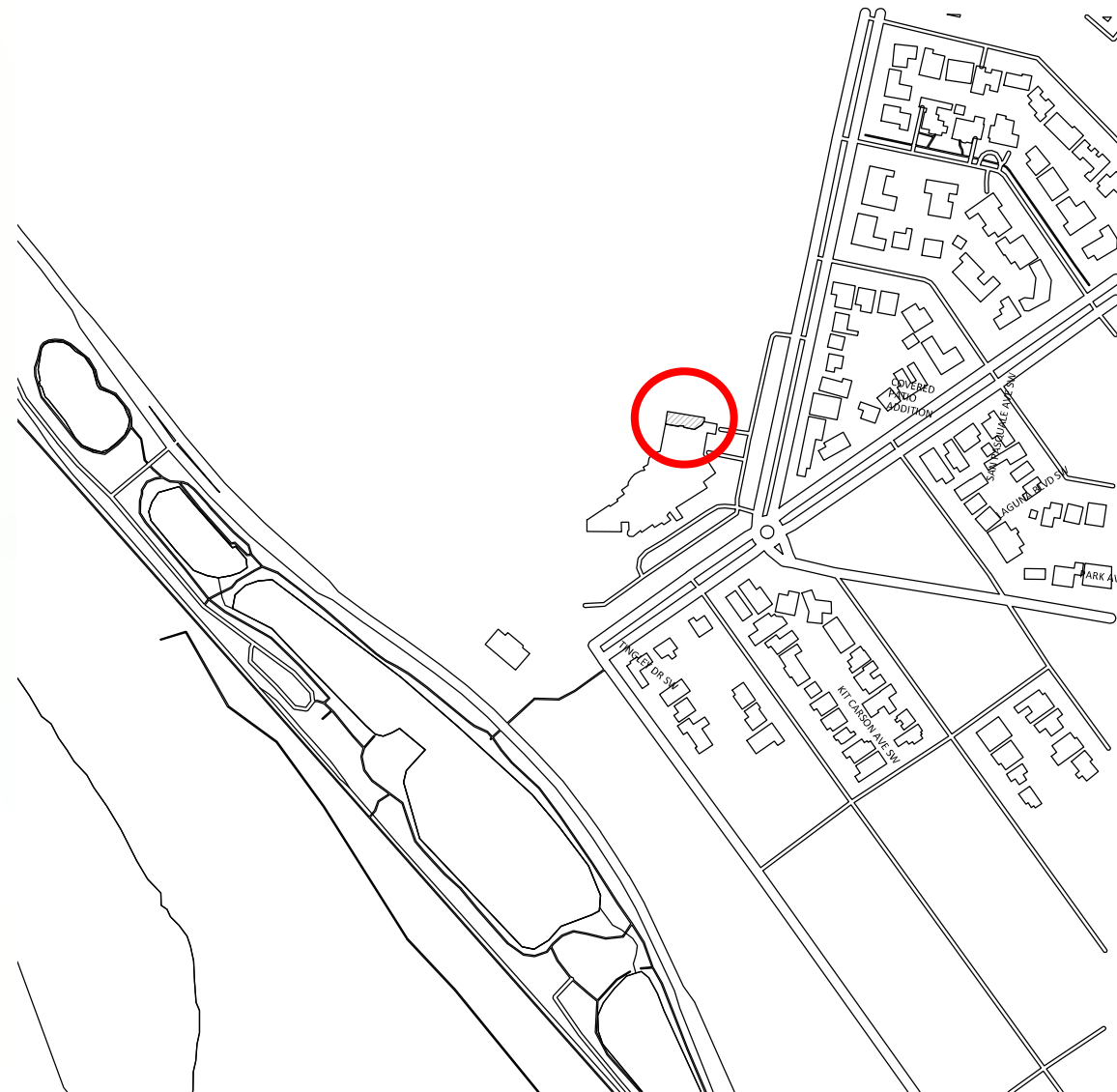
NEW COVERED PATIO ADDITION
 FOR:
Albuquerque COUNTRY CLUB
 Established 1914
 601 Laguna Blvd SW
 Albuquerque, NM 87104



VICINITY MAP



AREA MAP



FIRE TWO NOTES

FIRE PROTECTION NOTES

- FIRE PROTECTION SYSTEMS SHALL BE DEFERRED SUBMITTALS.
- SHOP DRAWINGS WILL BE SUBMITTED TO THE FIRE MARSHAL'S OFFICE FOR REVIEW AND APPROVAL OF ANY INSTALLATION OR MODIFICATION TO THE FIRE SPRINKLER SYSTEM, KITCHEN SUPPRESSION SYSTEM, OR ANY OTHER FIRE RELATED SYSTEM.
- THE FIRE SPRINKLER SYSTEM WILL BE SUPERVISED WHEN REQUIRED BY THE 2015 INTERNATIONAL FIRE CODE.
- ELEVATORS SHALL MEET ALL OF THE REQUIREMENTS IN NFPA 13, CHAPTER 8 AND 72, CHAPTER 21.

FIRE PROTECTION SYSTEM

- PROVIDE OCCUPANCY SIGN CONFORMING TO APPLICABLE BUILDING CODE REQUIREMENTS.
- DURING THE CONSTRUCTION THE G.C. IS TO PROVIDE A PORTABLE FIRE EXTINGUISHER WITH A RATING OF NOT LESS THAN 2A-10BC WITHIN 75 FOOT TRAVEL DISTANCE TO ALL PORTIONS OF THE PROJECT.
- EMERGENCY LIGHT FIXTURES TO BE 1 FT CANDLE PER SF OF EGRESS
- SHOP DRAWINGS SHALL BE SUBMITTED TO THE FIRE MARSHAL'S OFFICE FOR REVIEW AND APPROVAL OF ANY INSTALLATION OR MODIFICATION TO THE FIRE SPRINKLER SYSTEM, FIRE ALARM SYSTEM, OR ANY OTHER FIRE RELATED SYSTEM.
- AUTOMATIC SPRINKLER SYSTEMS SHALL BE SUPERVISED BY AN APPROVED CENTRAL FIRE ALARM, PROPRIETARY OR REMOTE STATION SERVICE, LOCAL ALARM WHICH GIVES AN AUDIBLE SIGNAL TO A CONSTANTLY ATTENDED LOCATION.

FIRE EXTINGUISHERS FOR CLASS A (ORDINARY MODERATE) HAZARDS (IFC 2009 AND NFPA 10)

- 3,000 S.F. MAX. FLOOR AREA FOR EACH FIRE EXTINGUISHER.
- 75' MAXIMUM TRAVEL DISTANCE TO EXTINGUISHER
- MINIMUM RATED EXTINGUISHER - 2A
- TOTAL FIRE EXTINGUISHERS = 5 MINIMUM WITHIN BUILDING
- FIRE EXTINGUISHERS SHALL HAVE A GROSS WEIGHT NOT TO EXCEED 10 lbs. AND ARE TO BE MOUNTED ON MOUNTING BRACKETS SO THAT TOP OF UNIT IS NO MORE THAN 5'-0" A.F.F.

DUCT SMOKE DETECTORS COMPLYING WITH SECTION 907.3.1 SHALL BE LOCATED AS FOLLOWS:

- IN THE MAIN RETURN AIR AND EXHAUST AIR PLENUM OF EACH AIR-CONDITIONING SYSTEM HAVING A CAPACITY GREATER THAN 2,000 CUBIC FEET PER MINUTE (CFM) (0.94 M³/2). SUCH DETECTORS SHALL BE LOCATED IN A SERVICEABLE AREA DOWNSTREAM OF THE LAST DUCT INLET.
- AT EACH CONNECTION TO A VERTICAL DUCT OR RISER SERVING TWO OR MORE STORIES FROM A RETURN AIR DUCT OR PLENUM OF AN AIR-CONDITIONING SYSTEM.

CODE DATA

APPLICABLE CODES
 CITY OF ALBUQUERQUE CODES REFERENCED:

- 2015 NEW MEXICO COMMERCIAL BUILDING CODE
- 2015 NEW MEXICO EXISTING BUILDING CODE
- 2015 NEW MEXICO MECHANICAL CODE
- 2015 NEW MEXICO PLUMBING CODE
- 2017 NEW MEXICO ELECTRICAL CODE
- 2012 NEW MEXICO ELECTRICAL SAFETY CODE
- 2009 NEW MEXICO ENERGY CONSERVATION CODE
- 2015 INTERNATIONAL FIRE CODE
- 2009 NATIONAL FIRE PROTECTION AGENCY 101 LIFE SAFETY CODE
- 2010 ADA STANDARDS FOR ACCESSIBLE DESIGN
- ANSI A117.1-2009 ACCESSIBLE AND USEABLE BUILDINGS AND FACILITIES

NO CHANGE IN OCCUPANCY

PROJECT CONSISTS OF ADDITION OF NEW STRUCTURE FOR NEW PATIO. SECTION 405 ALTERNATION

TOTAL GROSS PATIO ADDITION SQUARE FOOTAGE 2923 SF

OCCUPANCY GROUP A2 ASSEMBLY 195 OCC
 OCCUPANT LOAD 15 NET

ORIGINAL CONSTRUCTION TYPE (NO CHANGE); TYPE IIB (IBC SECTION 601)

EXISTING BUILDING FULLY SPRINKLERED
 NEW PATIO ADDITION TO BE DRY TYPE SPRINKLERED

PROJECT DIRECTORY

ARCHITECT
 ARIA STUDIO CONSULTANTS INC
 Daniel Puzak
 PO Box 1515
 Cedar Crest, NM 87008
 505.506.2314
 daniel@ariascinc.com

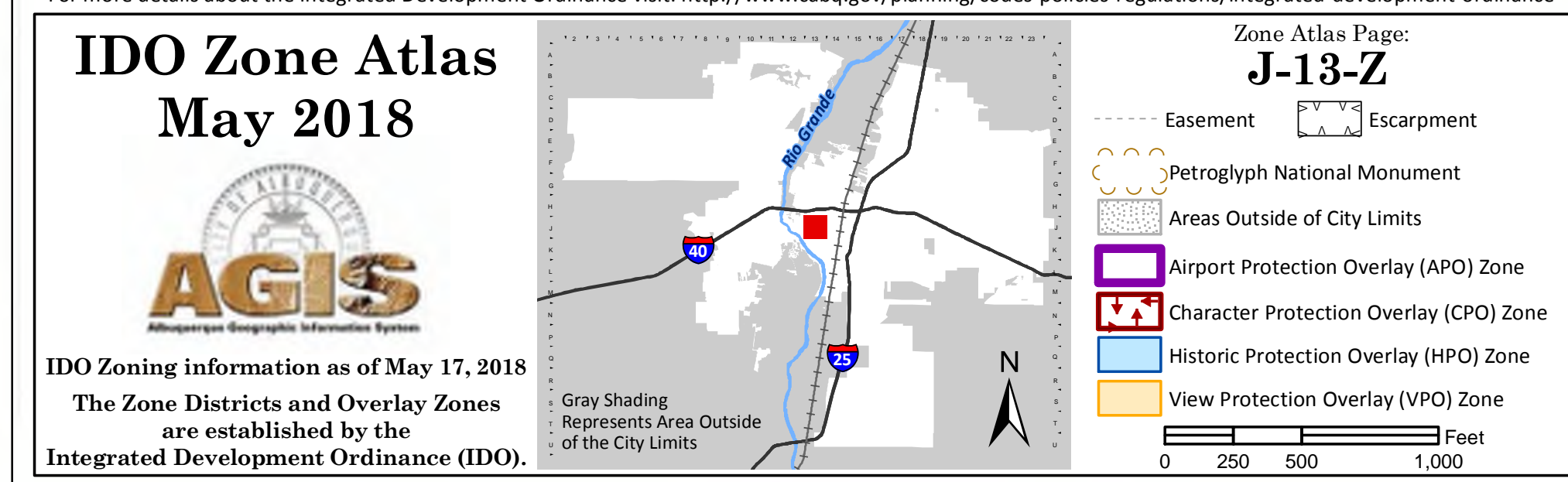
STRUCTURAL ENGINEER
 Walla Engineering LTD
 Larry E Kennedy
 6501 Americas parkway NE Ste 301
 Albuquerque, NM 87110
 505.881.3008
 larryk@wallaengineering.com

ELECTRICAL ENGINEER
 SERVICE ELECTRIC CO. INC
 JUAN ALDERETE
 3716 COMMERCIAL N.E.
 ALBUQUERQUE, NM 87107
 505.345.1955
 juan@serviceelectric.org

MECHANICAL ENGINEER
 EMeC LLC
 Salome Arciniega, PE, MSME, LEED, AP
 Consulting Engineers
 505.730.9698
 sa@emecllc.com

DRAWING INDEX

GENERAL	COVER SHEET
A001	COVER SHEET
STRUCTURAL	S001 GENERAL NOTES S101 PATIO FOUNDATION PLAN S102 PATIO FRAMING AND ROOF FRAMING PLANS S201 STRUCTURAL SECTIONS AND DETAILS S202 STRUCTURAL SECTIONS AND DETAILS S203 STRUCTURAL SECTIONS AND DETAILS
ARCHITECTURAL	A101 ARCHITECTURAL FLOOR PLAN A102 ARCHITECTURAL RCP A121 ARCHITECTURAL ROOF PLAN
A301	ARCHITECTURAL SECTION
PLUMBING	P-101 GAS PIPING
ELECTRICAL	EP-101 POWER PLAN EL-101 LIGHTING PLAN



Architect/Engineer

MARK	DATE	COA PERMIT COMMENTS	DESCRIPTION
REVISIONS			
ISSUE		2108 ACC PATIO	Construction Documents
PROJECT NO		2108_ACCPATIO_A101	
CAD DWG FILE		2108_ACCPATIO_A101	
DRAWN BY		BS	
CHECKED BY		DGP	
DATE		September 21, 2021	

COVER

A001

GENERAL NOTES

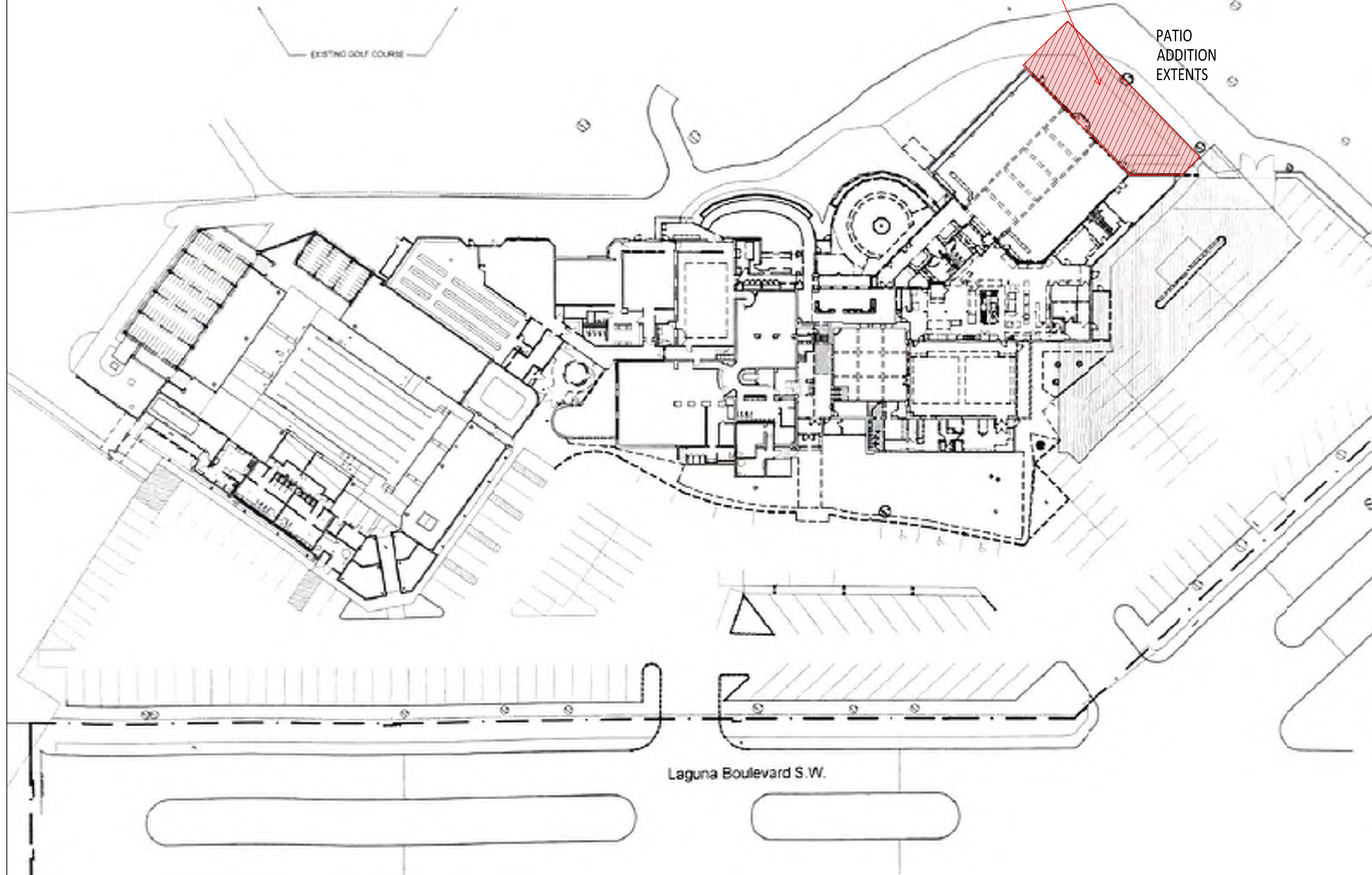
1. NO SITE WORK WITHIN SCOPE OF PROJECT.

EXISTING BUILDING DATA

PLUMBING FIXTURE COUNT: PER IBC TABLE 2902.1
 EXISTING PLUMBING FIXTURES IN BUILDING:
 CURRENT BUILDING SQFT: 42,914
 UNISEX TOILET: 1
 UNISEX SINK: 1
 FEMALE TOILETS: 15
 FEMALE SINKS: 11
 MALE TOILETS: 9
 MALE URINALS: 13
 MALE SINKS: 12

EXISTING EXTERIOR
 PATIO EXTENTS TO BE
 COVERED WITH NEW
 ROOF OVERHANG

PATIO
 ADDITION
 EXTENTS



ARIA

STUDIO CONSULTANTS, INC
 PO BOX 1515
 CEDAR CREST NM, 87008
 DANIEL@ARIASCINC.COM
 (505) 506-2314

EB ENTERPRISE BUILDERS

8516 Paseo Alameda NE
 Albuquerque, NM 87113
 505.857.0050

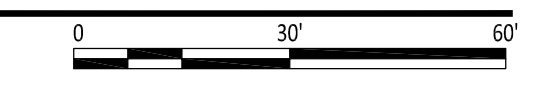
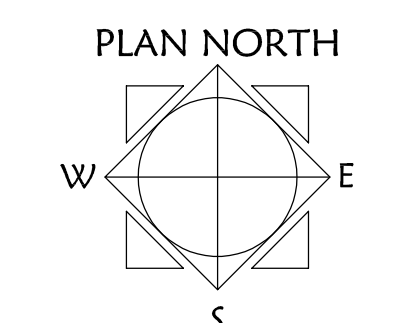
NEW COVERED PATIO
 ADDITION
 FOR:



601 Laguna Blvd SW
 Albuquerque, NM 87104

Architect/Engineer

MARK	DATE	DESCRIPTION
▲	11/18/2021	COA PERMIT COMMENTS
REVISIONS		
ISSUE	Construction Documents	
PROJECT NO	2108_ACC PATIO	
CAD DWG FILE	2108_ACCPATIO_A101	
DRAWN BY	BS	
CHECKED BY	DGP	
DATE	September 21, 2021	

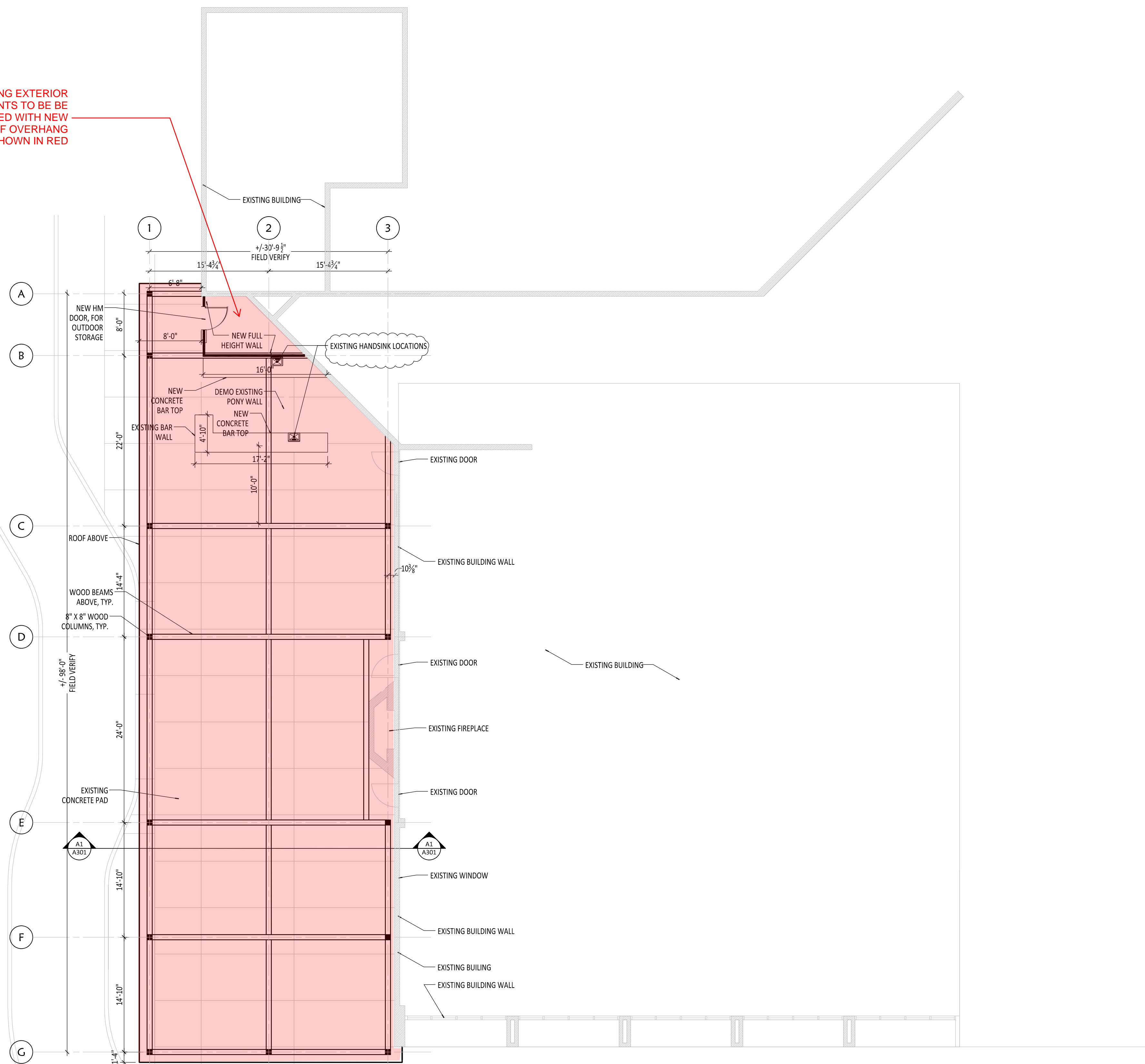


A1 ARCHITECTURAL SITE PLAN
 1" = 30'-0"

SITE PLAN

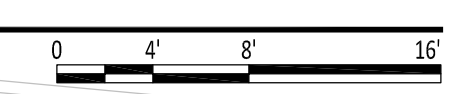
A100

EXISTING EXTERIOR PATIO EXTENTS TO BE COVERED WITH NEW ROOF OVERHANG SHOWN IN RED



A1 ALBUQUERQUE COUNTRY CLUB NEW COVERED PATIO ADDITION-FLOOR PLAN

1/8"=1'-0"

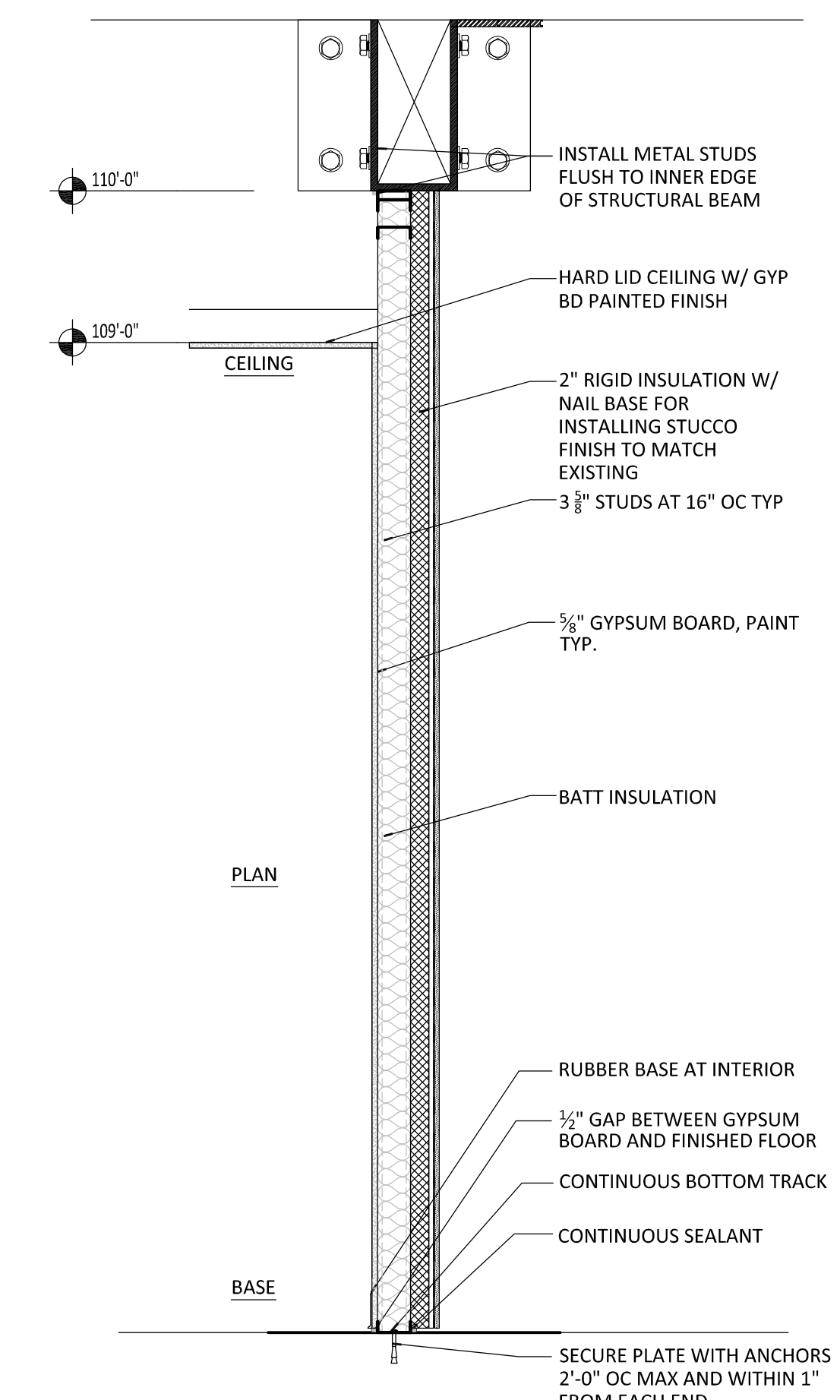


GENERAL NOTES

1. CONTRACTOR TO PROTECT IN PLACE ALL EXISTING CONDITIONS IN PLACE. PATCH AND REPAIR AS NECESSARY
2. FIELD VERIFY ALL DIMENSIONS

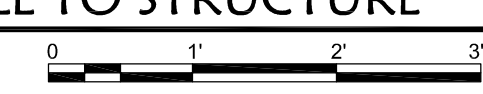
LEGEND

- EXISTING CONDITIONS TO REMAIN (GRAY)
- NEW STRUCTURAL LINES; RE STRUCTURAL
- NEW 3 3/8" METAL STUD FRAMED WALL, FULL HEIGHT TO B.O. NEW STRUCTURAL BEAM; EXTERIOR FINISH TO MATCH EXISTING, SEE A2/A101 DETAIL BELOW



A2 STORAGE WALL TO STRUCTURE

3/4" = 1'-0"



STUDIO CONSULTANTS, INC
 PO BOX 1515
 CEDAR CREST NM, 87008
 DANIEL@ARIASCINC.COM
 (505) 506-2314



8516 Paseo Alameda NE
 Albuquerque, NM 87113
 505.857.0050

NEW COVERED PATIO
 ADDITION
 FOR:



601 Laguna Blvd SW
 Albuquerque, NM 87104

Architect/Engineer

MARK	DATE	COA PERMIT COMMENTS DESCRIPTION
1	11/18/2021	
REVISIONS		
ISSUE	Construction Documents	
PROJECT NO	2108 ACC PATIO	
CAD DWG FILE	2108_ACCPATIO_A101	
DRAWN BY	BS	
CHECKED BY	DGP	
DATE	September 21, 2021	

FLOOR PLAN

A101