

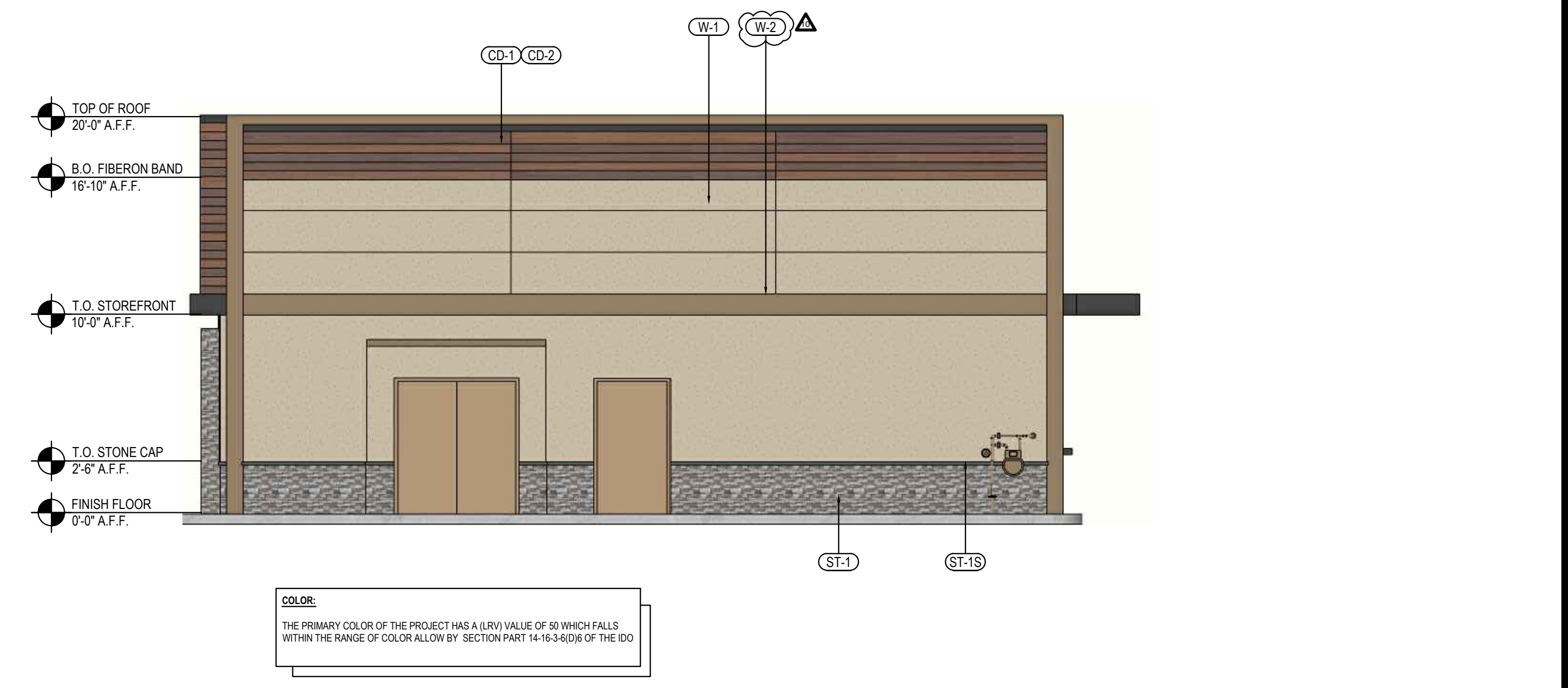
NORTH-EAST ELEVATION 4
Scale= 3/16" - 1/10" A-202



NORTH-WEST ELEVATION 2
Scale= 3/16" - 1/10" A-202



SOUTH-WEST ELEVATION 3
Scale= 3/16" - 1/10" A-202



SOUTH-EAST ELEVATION 1
Scale= 3/16" - 1/10" A-202

NO	MANUFACTURER	MFG#	COLOR	FINISH	NOTES
(W-1)	STO	3 PART STUCCO SYSTEM	SW 6149 - RELAXED KHAKI LRV: 50	FINE	BUILDING BODY
(W-2)	STO	3 PART STUCCO SYSTEM	SW 6144 - DAPPER TAN LRV: 22	FINE	ACCENT BAND
(ST-1S)	CORONADO STONE PRODUCTS	CHISELED STONE SILL	CHARCOAL	-	STONE CAP (3/8" VERTICAL JOINT - MORTAR TO MATCH STONE CAP)
(ST-1)	CORONADO STONE PRODUCTS	STRIP STONE	PRO-LEDGE - HURON	-	ENTRY PORTAL & WAINSCOT CONTACT: 864-962-1221 PROVIDE 3/8" MORTAR JOINTS MFG: ARGOS, COLOR: PUTTY
(CD-1)	FIBERON	WILDWOOD	MULGA	60% MATERIAL COVERAGE - RANDOM MIX (NON-GROOVE)	COMPOSITE DECKING - CONTACT: ERIC ATKINS @ 770-910-0930 EMAIL: EricAtkins@fiberondecking.com
(CD-2)	FIBERON	WILDWOOD	SUMAC	40% MATERIAL COVERAGE - RANDOM MIX (NON-GROOVE)	COMPOSITE DECKING - CONTACT: ERIC ATKINS @ 770-910-0930 EMAIL: EricAtkins@fiberondecking.com
(MTL-1)	EXCEPTIONAL METALS	-	"PANDA EXPRESS IRON ORE"	-	CAP FLASHING

MATERIALS



PER CITY ORDINANCE:

1. FACADE SHALL BE DESIGNED TO PROVIDE A SENSE OF HUMAN SCALE AT GROUND LEVEL BY PROVIDING A CLEAR ARCHITECTURAL DISTINCTION BETWEEN GROUND FLOOR LEVELS AND ALL ADDITIONAL LEVELS.
2. EACH STREET-FACING FACADE SHALL INCORPORATE AT LEAST (2) OF THE FOLLOWING FEATURES ALONG AT LEAST 30 PERCENT OF THE LENGTH OF THE FACADE, DISTRIBUTED ALONG THE FACADE SET BACK AT LEAST 1 OF THE INCORPORATED FEATURES OCCURS EVERY 40 FEET.
 - a. Ground-floor transparent windows, with the lower edge of windows sills no higher than 30 inches above the finished floor.
 - b. Windows on upper floors.
 - c. Primary pedestrian entrances.
 - d. Porch, awnings, canopies, trellises, awnings over windows, or other elements that provide shade or protection from the weather.
 - e. Sun shelves or other exterior building features designed to reflect sunlight in the building and reduce the need for interior lighting.
 - f. Raised planters between 12 inches and 28 inches above grade with surface planted to achieve at least 75 percent vegetative cover at maturity.

LENGTH OF BUILDING:

BUILDING LENGTH: 43'-2"
30% REQUIRED: 12'-11"
PROVIDED FEATURES: 64'-9"
a. GROUND FLOOR TRANSPARENT WINDOWS PROVIDED: 20'-9"
d. CANOPY PROVIDED: 44'-0"



PANDA EXPRESS, INC.
1683 Walnut Grove Ave.
Rosemead, California
91770
Telephone: 626.799.9898
Facsimile: 626.372.8288

All ideas, designs, arrangement and plans indicated or represented by this drawing are the property of Panda Express Inc. and were created for use on this specific project. None of these ideas, designs, arrangements or plans may be used by or disclosed to any person, firm, or corporation without the written permission of Panda Express Inc.

REVISIONS:

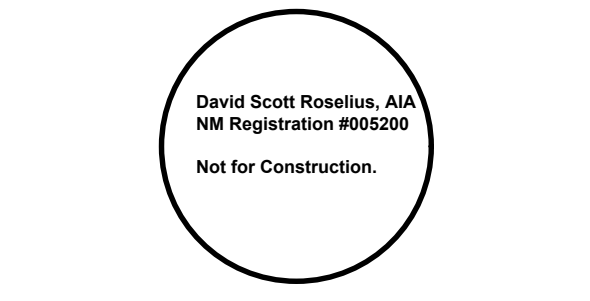
NO	DESCRIPTION	DATE
1	DRB RESUBMITTAL	04-06-22
2	DRB 2nd RESUBMITTAL	05-04-22
3	DRB 3rd RESUBMITTAL	09-21-22
4	DRB 4th RESUBMITTAL	10-19-22
5	PERMIT REVISIONS	05-23-23
6	CITY COMMENTS	08-17-23
7	CONST. ISSUE REVISIONS	09-25-23
8	CONST. ISSUE REVISIONS	10-17-23
9	CONST. ISSUE REVISIONS	05-20-24
10	ACCENT COLOR CHANGE	07-30-24

ISSUE DATE:

NO	DESCRIPTION	DATE
1	DRB SUBMITTAL	12-28-21
2	PNM SERVICE REQUEST	01-11-23
3	PERMIT ISSUE	02-13-23
4	CONSTRUCTION ISSUE	09-25-23

DRAWN BY: RM/KS/ILL

PANDA PROJECT #: S8-22-D8582
PANDA STORE #: D8582
ARCH PROJECT #: 21084



Heights Venture
ARCHITECTURE + DESIGN

HOUSTON 1111 North Loop West, Suite 800 Houston, Texas 77008 713.869.1103 V

DALLAS 5741 Legacy Drive, Suite 320 Plano, Texas 75024 972.490.7292 V

PANDA EXPRESS
TRUE WARM & WELCOME
10126 COORS BLVD. NW
ALBUQUERQUE, NM 87114

A-202

EXTERIOR
COLOR ELEVATIONS

TRUE WARM & WELCOME 2500 R1

CONSTRUCTION SET