



PANDA EXPRESS, INC.
1683 Walnut Grove Ave.
Rosemead, California
91770
Telephone: 626.799.9898
Facsimile: 626.372.8288

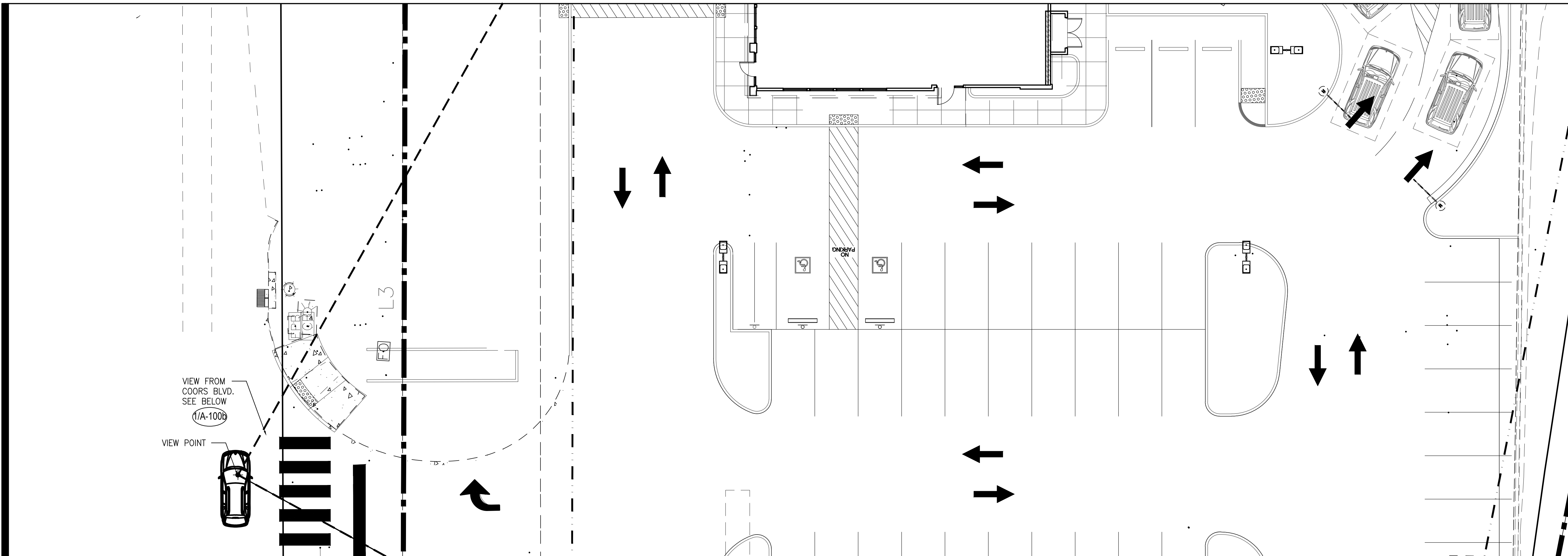
All ideas, designs, arrangement and plans indicated or represented by this drawing are the property of Panda Express Inc. and were created for use on this specific project. None of these ideas, designs, arrangements or plans may be used by or disclosed to any person, firm, or corporation without the written permission of Panda Express Inc.

REVISIONS:

△ DRB RESUBMITTAL	04-06-22
△ DRB 2nd RESUBMITTAL	05-04-22
△ DRB 3rd RESUBMITTAL	09-21-22
△ DRB 4th RESUBMITTAL	10-19-22

ISSUE DATE:

DRB SUBMITTAL	12-28-21
---------------	----------

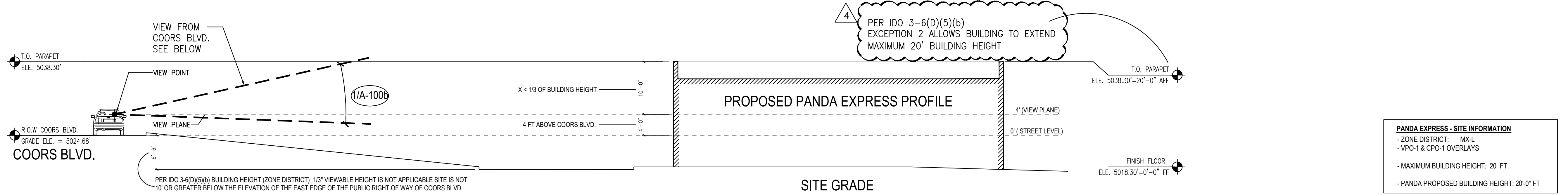


SITE PLAN VIEW - BUILDING AND STRUCTURE HEIGHT

2

Scale= 1" = 10'-0"

A-100b



SECTION - BUILDING AND STRUCTURE HEIGHT

2

Scale= 1" = 10'-0"

A-100b



ANGLED VIEW FROM COORS BLVD.

1

Scale= 1" = 10'-0"

A-100b

Heights Venture
ARCHITECTURE + DESIGN

HOUSTON 1111 North Loop West, Suite 800 Houston, Texas 77008 713.869.1103 V
DALLAS 5741 Legacy Drive, Suite 320 Plano, Texas 75024 972.490.7292 V

PANDA EXPRESS

TRUE WARM & WELCOME
10126 COORS BLVD. NW
ALBUQUERQUE, NM 87114

A-100b

VIEW ANALYSIS
VIEW FRAMES

TRUE WARM & WELCOME 2500 R1

DRB - PR-2022-006547 SI-2022-00216