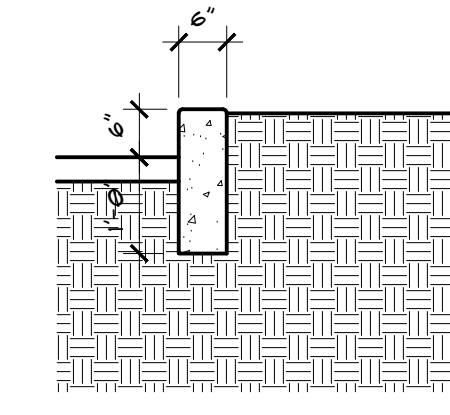
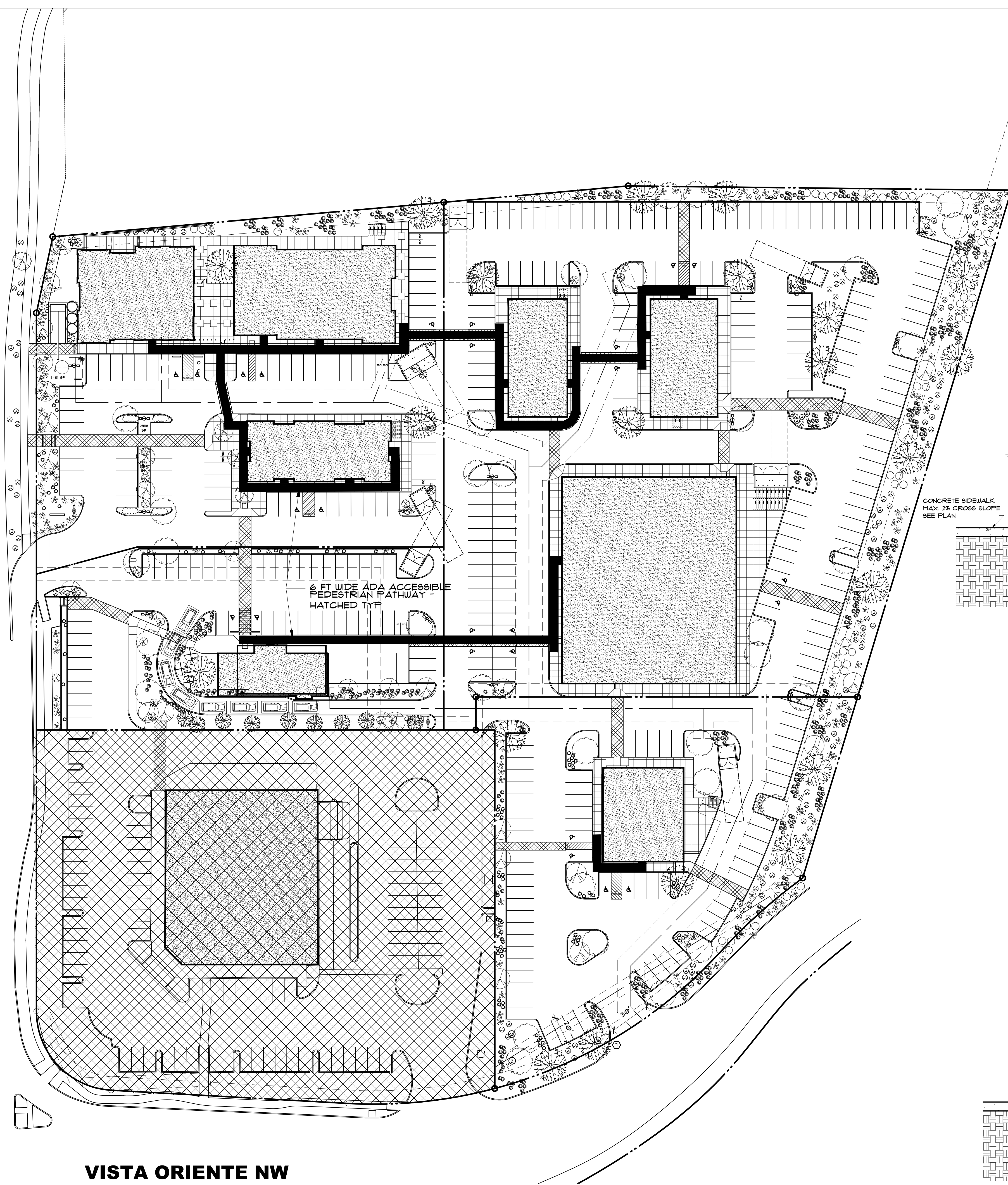


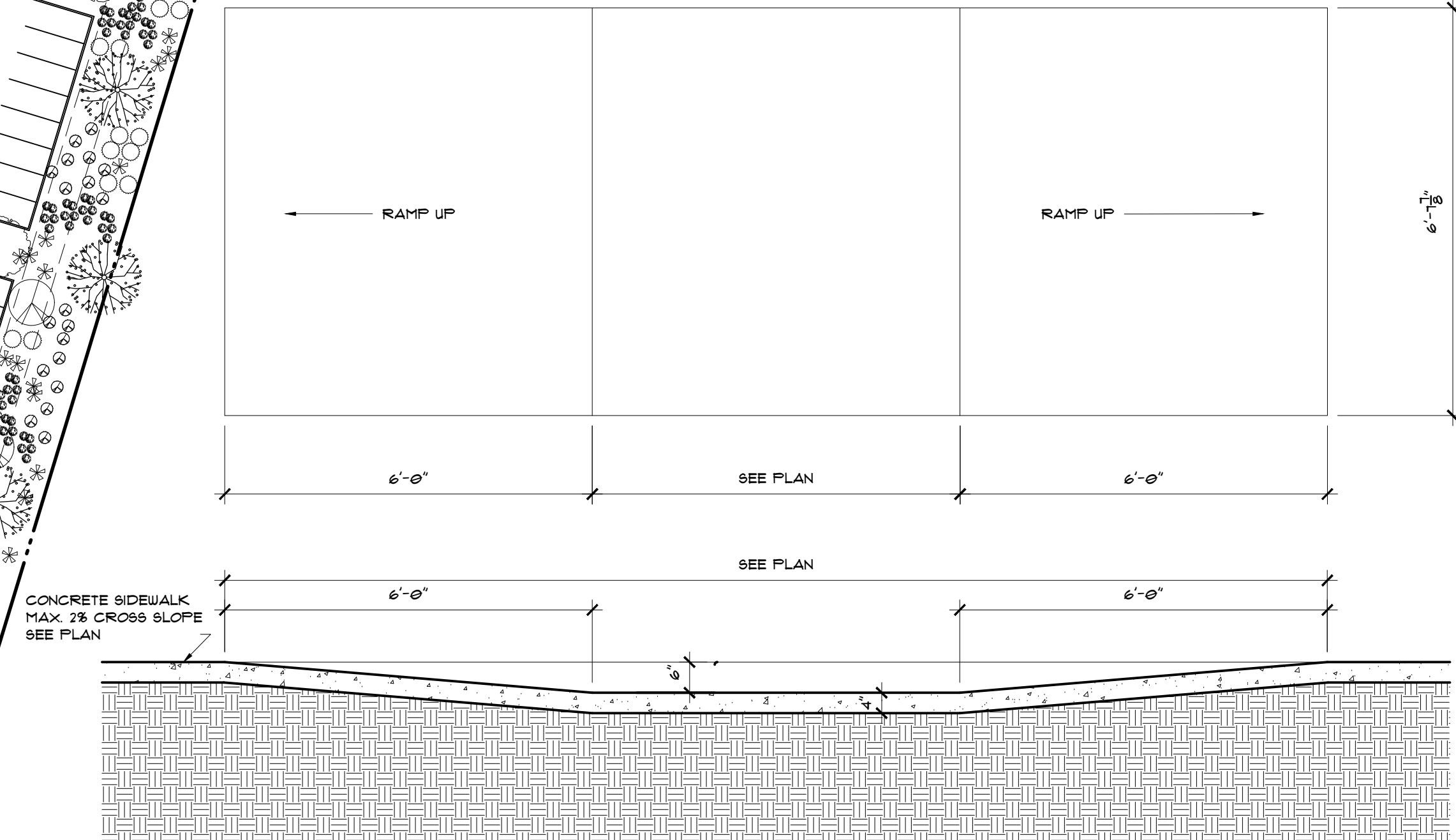
UNSER BLVD NW

VISTA ORIENTE NW

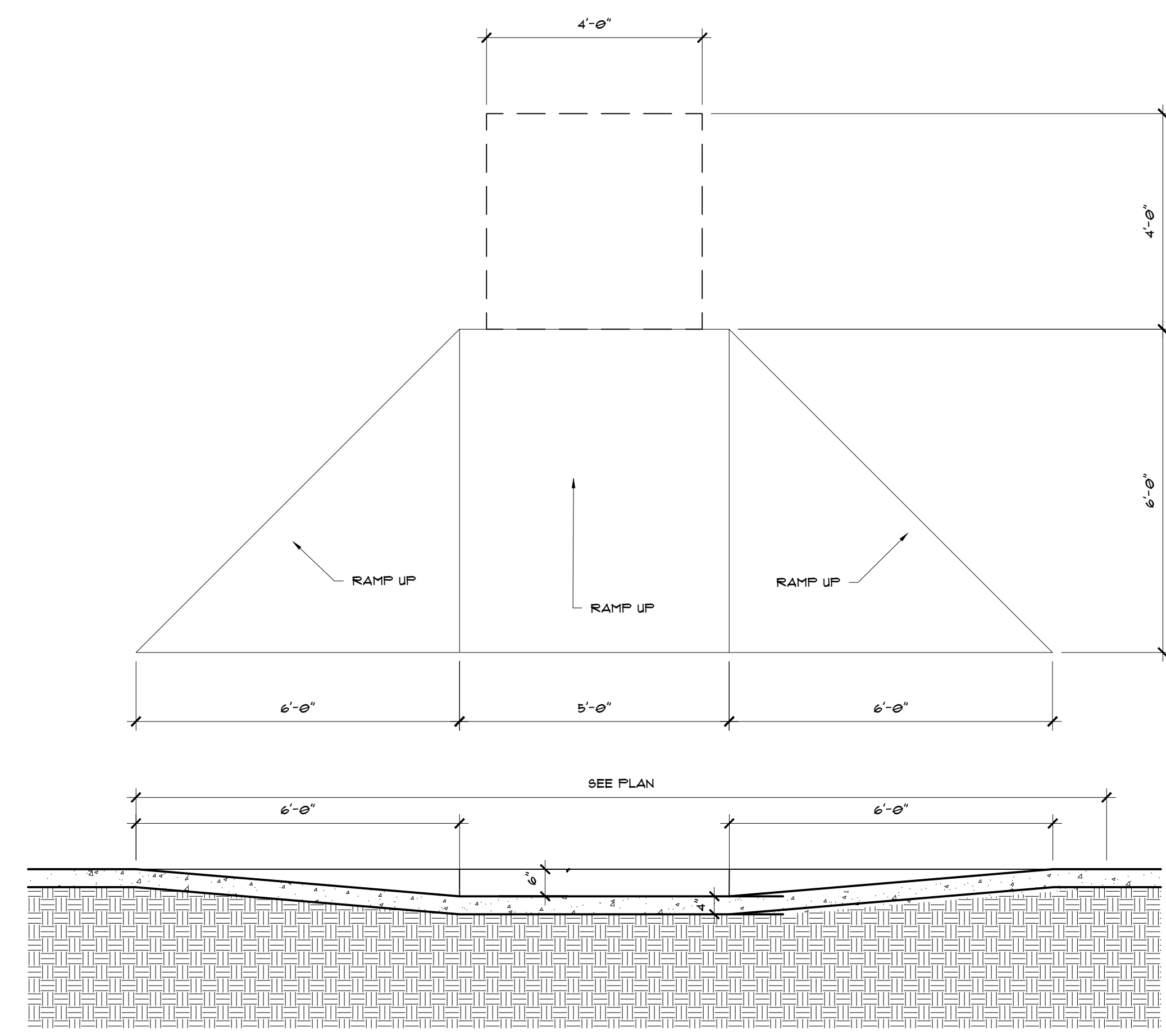
SITE PLAN 6 FT ADA ACCESSIBLE PEDESTRIAN PATHWAY 1" = 40'-0"



1 CURB DETAIL  
AI.3 1/2"=1'-0"



2 RAMP DETAIL  
AI.3 1/2"=1'-0"



3 SIDEWALK DETAIL  
AI.3 1/2"=1'-0"

ALL DIMENSIONS ARE TO BE FIELD VERIFIED. IF THERE ARE DISCREPANCIES, PLEASE NOTIFY THE ARCHITECT. DRAWING ARE NOT TO BE SCALED. USE DIMENSIONS FOR ACCURACY.



MARTIN FM GRUMMER  
ARCHITECT  
331 WILHELMY PLACE NE  
ALBUQUERQUE, NEW MEXICO 87106  
(505) 265-2507



**AA**

UNSER & VISTA ORIENTE  
2220 UNSER BLVD NW  
BUILDING #4  
ALBUQUERQUE, NM 87114  
6 FT ADA ACCESS. PPATHWAY

**BLDG. #4**

DATE:  
28 APRIL 2022  
DRAWN BY:  
MFMG  
CHECKED BY:  
VERIFIED BY:

REVISIONS  
18 MAY 2022

SHEET NO:  
**A1.3**