

**LANDSCAPE PLAN**  
1" = 20'-0"  
0 10' 20' 40'

**PLANT LEGEND**

SYMBOL	BOTANICAL / COMMON NAME	SIZE/COND.	MAT. HT.	MAT. DIA.	QTY
<b>TREES</b>					
	CELTIS OCCIDENTALIS COMMON HACKBERRY	2" CAL, B&B	40.00	30.00	2
	CELTIS OCCIDENTALIS 'JFS-KSU1' PRAIRIE SENTINEL® HACKBERRY	2" CAL, B&B	45.00	12.00	9
	CERCIS CANADENSIS 'PINK POM POMS' PINK POM POMS REDBUD	24" BOX	20.00	15.00	6
	STYPHNOLOBIUM JAPONICUM JAPANESE PAGODA TREE	2" CAL, B&B	40.00	30.00	6
	ULMUS PROPINQUA 'JFS-BIEBERICH' EMERALD SUNSHINE® ELM	4" CAL, B&B	35.00	25.00	1
<b>EVERGREEN TREES</b>					
	QUERCUS FUSIFORMIS ESCAPMENT LIVE OAK	2" CAL, B&B	30.00	30.00	6
	QUERCUS ROBUR X ALBA 'CRIMSCHMIDT' CRIMSON SPIRE™ OAK	2" CAL, B&B	35.00	10.00	18
					<b>TREE TOTAL 48</b>
<b>SHRUBS</b>					
	CARYOPTERIS X GLANDONENSIS 'DARK KNIGHT' DARK KNIGHT BLUEBEARD	#5	3.00	5.00	2
	CHRYSACTINIA MEXICANA DAMIANITA	#2	1.50	2.00	21
	LEUCOPHYLLUM CANDIDUM 'MICROBURST' MICROBURST DWARF TEXAS SAGE	#5	3.00	3.00	8
	RHAMPHIOLEPIS INDICA 'PINKIE' PINKIE INDIAN HAWTHORN	#5	3.00	4.00	7
<b>ACCENTS</b>					
	HESPERALOE PARVIFLORA 'LITTLE MISS SUNSHINE' LITTLE MISS SUNSHINE YELLOW YUCCA	#5	3.00	3.00	21
	HESPERALOE PARVIFLORA 'STOPLIGHTS' STOPLIGHTS DWARF RED YUCCA	#5	2.00	2.00	17
	HESPERALOE X FUNIFERA 'LITTLE GIANT' LITTLE GIANT DWARF HESPERALOE	#5	4.00	4.00	3
<b>EVERGREEN SHRUBS</b>					
	BERBERIS REPENS CREEPING MAHONIA	#5	1.50	3.00	6
	TAXUS X MEDIA 'DENSIFORMIS' DENSE SPREADING YEW	#5	3.00	5.00	12
<b>GRASSES</b>					
	MUHLENBERGIA LINDHEIMERI LINDHEIMER'S MUHLY	#5	5.00	5.00	7
<b>VINES</b>					
	ROSA BANKSAE 'ALBA PLENA' WHITE LADY BANK'S ROSE	#5	8.00	9.00	18

**STREET TREE LEGEND**

SYMBOL	BOTANICAL / COMMON NAME	SIZE/COND.	MAT. HT.	MAT. DIA.	QTY
<b>TREES</b>					
	CELTIS OCCIDENTALIS COMMON HACKBERRY	2" CAL, B&B	40.00	30.00	2
	CELTIS OCCIDENTALIS 'JFS-KSU1' PRAIRIE SENTINEL® HACKBERRY	2" CAL, B&B	45.00	12.00	4
	CERCIS CANADENSIS 'PINK POM POMS' PINK POM POMS REDBUD	24" BOX	20.00	15.00	4
	STYPHNOLOBIUM JAPONICUM JAPANESE PAGODA TREE	2" CAL, B&B	40.00	30.00	6
<b>EVERGREEN TREES</b>					
	QUERCUS FUSIFORMIS ESCAPMENT LIVE OAK	2" CAL, B&B	30.00	30.00	6
	QUERCUS ROBUR X ALBA 'CRIMSCHMIDT' CRIMSON SPIRE™ OAK	2" CAL, B&B	35.00	10.00	18
					<b>TREE TOTAL 40</b>

\*34 TREES PROVIDED IN PUBLIC ROW, 6 TREES PROVIDED WITHIN 30' OFFSET FROM BACK OF CURB OF ABUTTING STREET PER IDO 14-16-5-6(D)(1)(A)

**STREET TREE CANOPY COVERAGE - COA**

BOTANICAL/COMMON NAME	MAT. DIA.	QTY.	COVERAGE (m² x QTY)
CELTIS OCCIDENTALIS 'JFS-KSU1'	12	6	678.584013
CERCIS CANADENSIS 'PINK POM POMS'	15	6	1060.287521
ULMUS PROPINQUA 'JFS-BIEBERICH'	25	1	490.873852
		TOTAL	2229.745386

**GROUND PLANT COVERAGE - COA**

BOTANICAL/COMMON NAME	MAT. DIA.	QTY.	COVERAGE (m² x QTY)
CARYOPTERIS X GLANDONENSIS 'DARK KNIGHT'	5	2	39.269908
CHRYSACTINIA MEXICANA	2	18	56.548668
EHAPHIOLEPIS INDICA 'PINKIE'	4	7	87.964594
HESPERALOE PARVIFLORA 'LITTLE MISS SUNSHINE'	3	11	77.754418
HESPERALOE PARVIFLORA 'STOPLIGHTS'	2	15	47.123890
HESPERALOE X FUNIFERA 'LITTLE GIANT'	4	3	37.699112
BERBERIS REPENS	3	6	42.411501
TAXUS X MEDIA 'DENSIFORMIS'	5	11	215.984495
MUHLENBERGIA LINDHEIMERI	5	7	137.444679
ROSA BANKSAE 'ALBA PLENA'	9	18	1145.110522
		TOTAL	1887.311787

**GENERAL SHEET NOTES**

- A. PRIOR TO BEGINNING WORK ON PROJECT, REVIEW PROJECT IN THE FIELD WITH OWNER'S REPRESENTATIVE.  
B. VERIFY OR COORDINATE EXISTING UTILITY LOCATIONS BEFORE EXCAVATION OR PLANTING. UTILITIES AND ASSOCIATED EQUIPMENT SHOWN FOR REFERENCE ONLY. SEE CIVIL AND ELECTRICAL DRAWINGS.  
C. PLANTS WITHIN CLEAR SIGHT TRIANGLES SHALL NOT EXCEED A HEIGHT OF 24".  
D. VERIFY PLANT QUANTITIES. PLANT QUANTITIES ARE SHOWN FOR INFORMATIONAL PURPOSES ONLY.

**IRRIGATION NOTES**

1. PLANTINGS SHALL BE IRRIGATED BY AN AUTOMATED IRRIGATION SYSTEM, WITH PROGRAMMABLE SETTINGS, AUTOMATED IRRIGATION CONTROLLER, AND MOISTURE SENSOR TO AVOID OVERWATERING.  
2. THE IRRIGATION SYSTEM SHALL COMPLY WITH SECTION 8 OF THE ABCWUA LEGISLATION AND ORDINANCES.  
3. THE IRRIGATION SYSTEM SHALL BE DESIGNED TO MINIMIZE THE USE OF WATER.  
4. THE IRRIGATION SYSTEM SHALL NOT IRRIGATE IMPERVIOUS SURFACES, INCLUDING SIDEWALKS, DRIVEWAYS, STREETS AND PARKING OR LOADING AREAS.  
5. IRRIGATION POINT OF CONNECTION TO THE CITY WATER WILL BE LOCATED WITHIN PROPERTY LIMITS AND SHALL COMPLY WITH THE CITY OF ALBUQUERQUE REDUCED PRESSURE BACKFLOW PREVENTER STANDARDS AND SPECIFICATIONS.  
6. RUN TIMES AND IRRIGATION ZONES SHALL BE BASED UPON PLANT SPECIES AND THEIR ESTABLISHMENT. RUN TIMES SHALL BE REGULARLY ADJUSTED ACCORDING TO PLANT MATURITY, SEASON, LOCATION AND PERFORMANCE.  
7. IRRIGATION BACKFLOW PREVENTER TO BE LOCATED IN A HEATED OUTDOOR ENCLOSURE

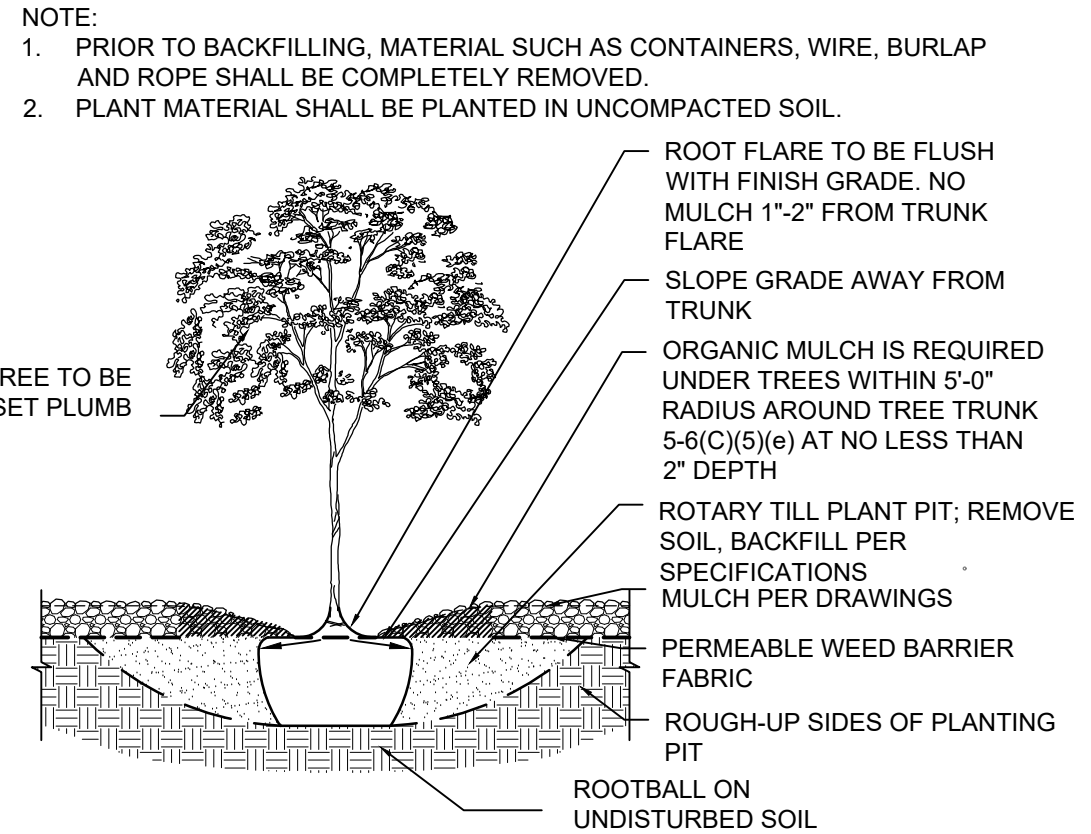
**LEGEND**

- PROPERTY LINE
- 
- 
- 
- 

**SHEET KEYED NOTES**

1. STREET TREES AT 25'-0" O.C.  
2. CLEAR SITE TRIANGLES  
3. RAISED PLANTER  
4. APPROXIMATE LOCATION OF SANITARY SEWER OR WATER LINE. SEE CIVIL  
5. STREET TREES LOCATED WITHIN 20' OFFSET FROM BACK OF CURB OF ABUTTING STREET. REFER TO REQUIRED STREET TREES UNDER COA LANDSCAPE REQUIREMENTS ON THIS SHEET

**TREE PLANTING DETAIL**



**COA LANDSCAPE REQUIREMENTS**

TOTAL SITE ACREAGE = 1.90 ACRES / 82,764 SF  
MINUS UNIMPROVED AREAS: 0.0 ACRES  
SUBMITTED DEVELOPED SITE AREA: 1.90 ACRES / 82,764 SF  
AREA OF LOT COVERED BY BUILDINGS = 47,663 SF  
NET LOT AREA = 35,101 SF

**REQUIRED LANDSCAPE**  
REQUIRED LANDSCAPE AREA (10% OF NET LOT AREA) = 3,510 SF  
PROVIDED LANDSCAPE AREA = 3,556 SF = 10.1%  
10% OF NET LOT AREA REQUIRED PER 5-6(C)(2)(b)

**REQUIRED STREET TREES**  
REQUIRED TREES = (1) TREE EVERY 25' O.C.  
LINEAR FOOTAGE = 966 LF / 25' O.C. = 39 TREES REQUIRED  
TREES PROVIDED = 40 TREES  
34 TREES PROVIDED IN PUBLIC ROW, 6 TREES PROVIDED WITHIN 20' OFFSET FROM BACK OF CURB OF ABUTTING STREET PER IDO 14-16-5-6(D)(1)(A)

**REQUIRED VEGETATIVE COVERAGE**  
REQUIRED VEGETATIVE COVERAGE = 75% OF PROVIDED LANDSCAPE = 2,785 SF  
A MINIMUM 25% OF REQUIRED VEGETATIVE COVERAGE BY GROUND PLANTS  
PROVIDED VEGETATIVE COVERAGE = 4,117 SF

**TREE CANOPY COVERAGE**  
= 2,230 SF = 54% OF PROVIDED VEGETATIVE COVERAGE  
**GROUND PLANT COVERAGE**  
= 1,887 SF = 46% OF PROVIDED VEGETATIVE COVERAGE

**GROUND COVER MATERIAL (EXCLUDING PUBLIC ROW)**  
TOTAL ROCK MULCH GROUND COVER = 1,648 SF = 46%  
TOTAL ORGANIC MULCH GROUND COVER = 1,908 SF = 54%  
A MAXIMUM OF 50% GRAVEL OR CRUSHER FINES IS PERMITTED 14-16-5-6(C)(5)(d)

\*REFER TO ARCHITECTURAL PLANS FOR OPEN SPACE CALCULATIONS



PROJECT

**UPTOWN CONNECT**  
6501 INDIAN SCHOOL NE  
Albuquerque, NM 87110

**DFT SITE PLAN  
SUBMITTAL**

<b>REVISIONS</b>	
△	
△	
△	
△	
△	
△	
DRAWN BY CB	
REVIEWED BY BG	
DATE	01/12/2026
PROJECT NO.	20-0010

DRAWING NAME  
**LANDSCAPE PLAN**



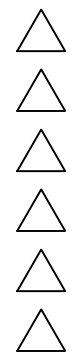
SEAL



PROJECT

UPTOWN CONNECT  
6501 INDIAN SCHOOL NE  
Albuquerque, NM 87110DFT SITE PLAN  
SUBMITTAL

REVISIONS



DRAWN BY

CB

REVIEWED BY

BG

DATE

01/12/2026

PROJECT NO.

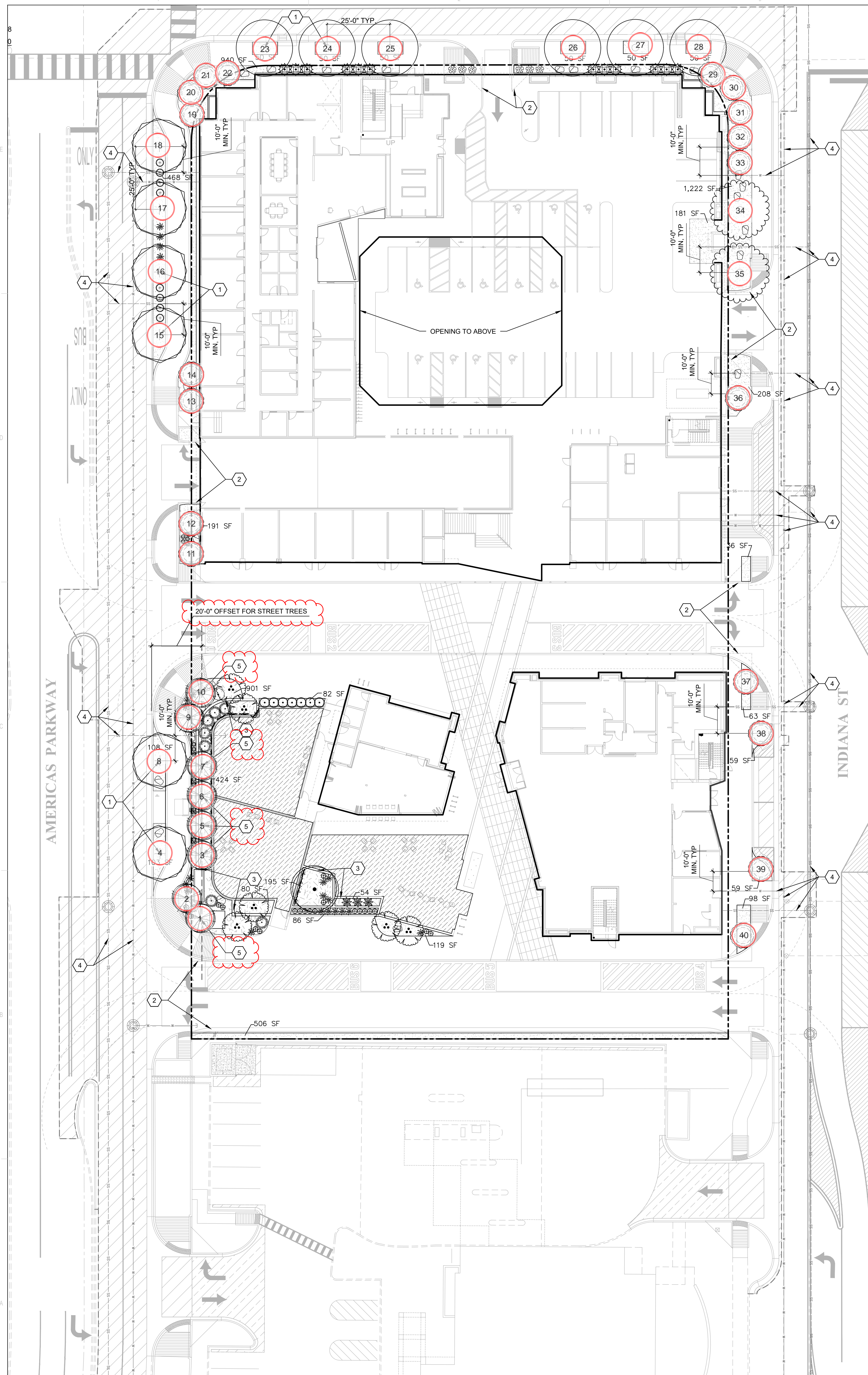
20-0010

DRAWING NAME

LANDSCAPE PLAN

SHEET NO.

SDP-2.1



NORTH



A1

## LANDSCAPE PLAN

1" = 20'-0"

0 10' 20' 40'

## PLANT LEGEND

SYMBOL	BOTANICAL / COMMON NAME	SIZE/COND.	MAT. HT.	MAT. DIA.	QTY
<b>TREES</b>					
	CELTIS OCCIDENTALIS COMMON HACKBERRY	2" CAL, B&B	40.00	30.00	2
	CELTIS OCCIDENTALIS 'JFS-KSU1' PRAIRIE SENTINEL® HACKBERRY	2" CAL, B&B	45.00	12.00	9
	CERCIS CANADENSIS 'PINK POM POMS' PINK POM POMS REDBUD	24" BOX	20.00	15.00	6
	STYPHNOLOBIUM JAPONICUM JAPANESE PAGODA TREE	2" CAL, B&B	40.00	30.00	6
	ULMUS PROPINQUA 'JFS-BIEBERICH' EMERALD SUNSHINE® ELM	4" CAL, B&B	35.00	25.00	1
<b>EVERGREEN TREES</b>					
	QUERCUS FUSIFORMIS ESCAPMENT LIVE OAK	2" CAL, B&B	30.00	30.00	6
	QUERCUS ROBUR X ALBA 'CRIMSCHMIDT' CRIMSON SPIRE™ OAK	2" CAL, B&B	35.00	10.00	18
					<b>TREE TOTAL 48</b>
<b>SHRUBS</b>					
	CARYOPTERIS X GLANDONENSIS 'DARK KNIGHT' DARK KNIGHT BLUEBEARD	#5	3.00	5.00	2
	CHRYSACTINIA MEXICANA DAMIANITA	#2	1.50	2.00	21
	LEUCOPHYLLUM CANDIDUM 'MICROBURST' MICROBURST DWARF TEXAS SAGE	#5	3.00	3.00	8
	RHAMPHOLEPIS INDICA 'PINKIE' PINKIE INDIAN HAWTHORN	#5	3.00	4.00	7
<b>ACCENTS</b>					
	HESPERALOE PARVIFLORA 'LITTLE MISS SUNSHINE'	#5	3.00	3.00	21
	HESPERALOE PARVIFLORA 'STOPLIGHTS' STOPLIGHTS DWARF RED YUCCA	#5	2.00	2.00	17
	HESPERALOE X FUNIFERA 'LITTLE GIANT' LITTLE GIANT DWARF HESPERALOE	#5	4.00	4.00	3
<b>EVERGREEN SHRUBS</b>					
	BERBERIS REPENS CREEPING MAHONIA	#5	1.50	3.00	6
	TAXUS X MEDIA 'DENSIFORMIS' DENSE SPREADING YEW	#5	3.00	5.00	12
<b>GRASSES</b>					
	MUHLENBERGIA LINDHEIMERI LINDHEIMER'S MUHLY	#5	5.00	5.00	7
<b>VINES</b>					
	ROSA BANKSAE 'ALBA PLENA' WHITE LADY BANK'S ROSE	#5	8.00	9.00	18

## STREET TREE LEGEND

SYMBOL	BOTANICAL / COMMON NAME	SIZE/COND.	MAT. HT.	MAT. DIA.	QTY
<b>TREES</b>					
	CELTIS OCCIDENTALIS COMMON HACKBERRY	2" CAL, B&B	40.00	30.00	2
	CELTIS OCCIDENTALIS 'JFS-KSU1' PRAIRIE SENTINEL® HACKBERRY	2" CAL, B&B	45.00	12.00	4
	CERCIS CANADENSIS 'PINK POM POMS' PINK POM POMS REDBUD	24" BOX	20.00	15.00	4
	STYPHNOLOBIUM JAPONICUM JAPANESE PAGODA TREE	2" CAL, B&B	40.00	30.00	6
<b>EVERGREEN TREES</b>					
	QUERCUS FUSIFORMIS ESCAPMENT LIVE OAK	2" CAL, B&B	30.00	30.00	6
	QUERCUS ROBUR X ALBA 'CRIMSCHMIDT' CRIMSON SPIRE™ OAK	2" CAL, B&B	35.00	10.00	18
					<b>TREE TOTAL 40</b>

## STREET TREE CANOPY COVERAGE - COA

BOTANICAL/COMMON NAME	MAT. DIA.	QTY.	COVERAGE (sq ft x QTY)
CELTIS OCCIDENTALIS 'JFS-KSU1'	12	6	678.584013
CERCIS CANADENSIS 'PINK POM POMS'	15	6	1060.287521
ULMUS PROPINQUA 'JFS-BIEBERICH'	25	1	490.873852
TOTAL			2229.745386

## GROUND PLANT COVERAGE - COA

BOTANICAL/COMMON NAME	MAT. DIA.	QTY.	COVERAGE (sq ft x QTY)
CARYOPTERIS X GLANDONENSIS 'DARK KNIGHT'	5	2	39.269908
CHRYSACTINIA MEXICANA	2	18	56.548668
EHAPHIOLEPIS INDICA 'PINKIE'	4	7	87.964594
HESPERALOE PARVIFLORA 'LITTLE MISS SUNSHINE'	3	11	77.754418
HESPERALOE PARVIFLORA 'STOPLIGHTS'	2	15	47.123890
HESPERALOE X FUNIFERA 'LITTLE GIANT'	4	3	37.699112
BERBERIS REPENS	3	6	42.411501
TAXUS X MEDIA 'DENSIFORMIS'	5	11	215.984495
MUHLENBERGIA LINDHEIMERI	5	7	137.444679
ROSA BANKSAE 'ALBA PLENA'	9	18	1145.110522
TOTAL			1887.311787

## GENERAL SHEET NOTES

- PRIOR TO BEGINNING WORK ON PROJECT, REVIEW PROJECT IN THE FIELD WITH OWNER'S REPRESENTATIVE.
- VERIFY OR COORDINATE EXISTING UTILITY LOCATIONS BEFORE EXCAVATION OR PLANTING. UTILITIES AND ASSOCIATED EQUIPMENT SHOWN FOR REFERENCE ONLY. SEE CIVIL AND ELECTRICAL DRAWINGS.
- PLANTS WITHIN CLEAR SIGHT TRIANGLES SHALL NOT EXCEED A HEIGHT OF 24'.
- VERIFY PLANT QUANTITIES. PLANT QUANTITIES ARE SHOWN FOR INFORMATIONAL PURPOSES ONLY.

## IRRIGATION NOTES

- PLANTINGS SHALL BE IRRIGATED BY AN AUTOMATED IRRIGATION SYSTEM, WITH PROGRAMMABLE SETTINGS, AUTOMATED IRRIGATION CONTROLLER, AND MOISTURE SENSOR TO AVOID OVERWATERING.
- THE IRRIGATION SYSTEM SHALL COMPLY WITH SECTION 8 OF THE ABCWUA LEGISLATION AND ORDINANCES.
- THE IRRIGATION SYSTEM SHALL BE DESIGNED TO MINIMIZE THE USE OF WATER.
- THE IRRIGATION SYSTEM SHALL NOT IRRIGATE IMPERVIOUS SURFACES, INCLUDING SIDEWALKS, DRIVEWAYS, STREETS AND PARKING OR LOADING AREAS.
- IRRIGATION POINT OF CONNECTION TO THE CITY WATER WILL BE LOCATED WITHIN PROPERTY LIMITS AND SHALL COMPLY WITH THE CITY OF ALBUQUERQUE REDUCED PRESSURE BACKFLOW PREVENTER STANDARDS AND SPECIFICATIONS.
- RUN TIMES AND IRRIGATION ZONES SHALL BE BASED UPON PLANT SPECIES AND THEIR ESTABLISHMENT. RUN TIMES SHALL BE REGULARLY ADJUSTED ACCORDING TO PLANT MATURITY, SEASON, LOCATION AND PERFORMANCE.
- IRRIGATION BACKFLOW PREVENTER TO BE LOCATED IN A HEATED OUTDOOR ENCLOSURE.

## LEGEND

----- PROPERTY LINE

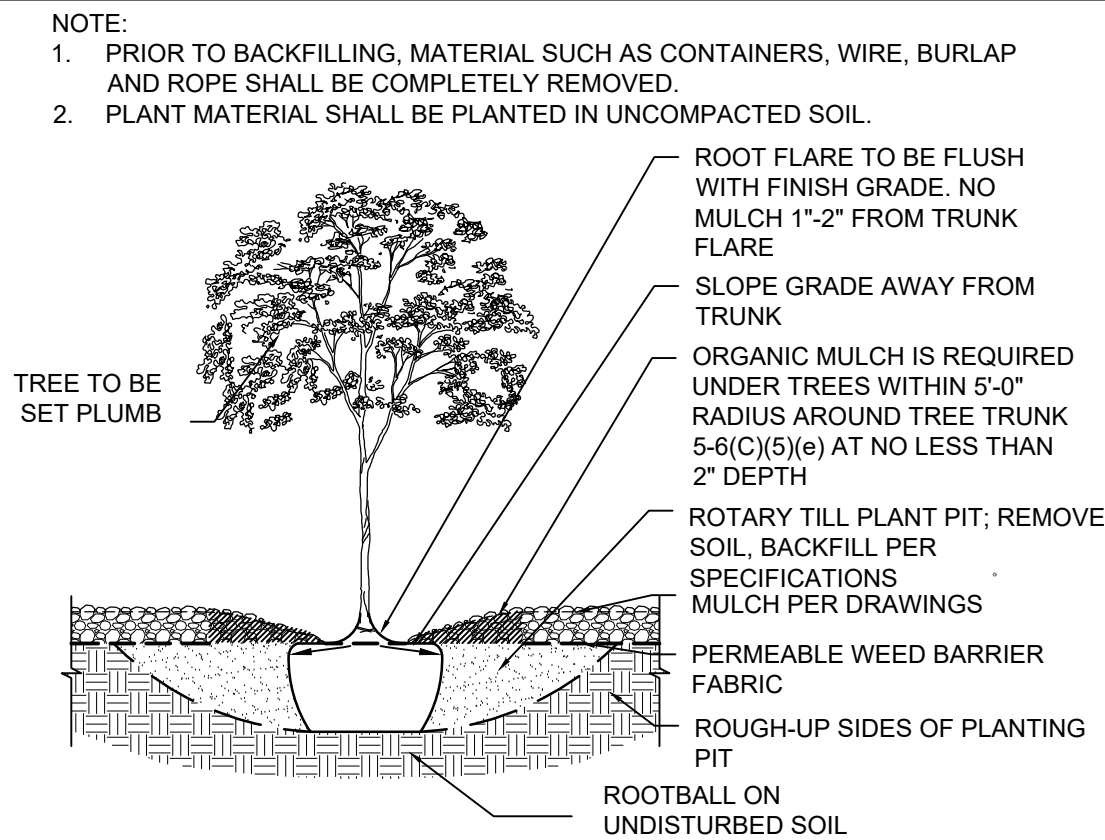
5/8" DIA ROCK MULCH, 3" DEPTH WITHOUT WEED FABRIC,  
COLOR: AMARETTO BROWNSHREDDED WOOD ORGANIC MULCH, 4" DEPTH WITHOUT  
WEED FABRICSYNTHETIC PET TURF, REFER TO ARCHITECTURAL SITE  
PLANS

LANDSCAPE BOULDER

## SHEET KEYED NOTES

- STREET TREES AT 25'-0" O.C.
- CLEAR SITE TRIANGLES
- RAISED PLANTER
- APPROXIMATE LOCATION OF SANITARY SEWER OR WATER LINE. SEE CIVIL
- STREET TREES LOCATED WITHIN 20' OFFSET FROM BACK OF CURB OF ABUTTING STREET. REFER TO REQUIRED STREET TREES UNDER COA LANDSCAPE REQUIREMENTS ON THIS SHEET

## TREE PLANTING DETAIL



## COA LANDSCAPE REQUIREMENTS

TOTAL SITE ACREAGE = 1.90 ACRES / 82,764 SF  
MINUS UNIMPROVED AREAS: 0.0 ACRES  
SUBMITTED DEVELOPED SITE AREA: 1.90 ACRES / 82,764 SF  
AREA OF LOT COVERED BY BUILDINGS = 47,663 SF  
NET LOT AREA = 35,101 SF

REQUIRED LANDSCAPE  
REQUIRED LANDSCAPE AREA (10% OF NET LOT AREA) = 3,510 SF  
PROVIDED LANDSCAPE AREA = 3,556 SF = 10.1%  
10% OF NET LOT AREA REQUIRED PER 5-6(C)(2)(b)

## REQUIRED STREET TREES

REQUIRED TREES = (1) TREE EVERY 25' O.C.

LINEAR FOOTAGE = 966 LF / 25' O.C. = 39 TREES REQUIRED

TREES PROVIDED = 40 TREES

34 TREES PROVIDED IN PUBLIC ROW, 6 TREES PROVIDED WITHIN 20' OFFSET

FROM BACK OF CURB OF ABUTTING STREET PER IDO 14-16-5-6(D)(1)(A)

## REQUIRED VEGETATIVE COVERAGE

REQUIRED VEGETATIVE COVERAGE = 75% OF PROVIDED LANDSCAPE = 2,785 SF

A MINIMUM 25% OF REQUIRED VEGETATIVE COVERAGE BY GROUND PLANTS

PROVIDED VEGETATIVE COVERAGE = 4,117 SF

## TREE CANOPY COVERAGE

= 2,230 SF = 54% OF PROVIDED VEGETATIVE COVERAGE

## GROUND PLANT COVERAGE

= 1,887 SF = 46% OF PROVIDED VEGETATIVE COVERAGE

## GROUND COVER MATERIAL (EXCLUDING PUBLIC ROW)

TOTAL ROCK MULCH GROUND COVER = 1,648 SF = 46%

TOTAL ORGANIC MULCH GROUND COVER = 1,908 SF = 54%

A MAXIMUM OF 50% GRAVEL OR CRUSHER FINES IS PERMITTED 14-16-5-6(C)(5)(d)

\*REFER TO ARCHITECTURAL PLANS FOR OPEN SPACE CALCULATIONS