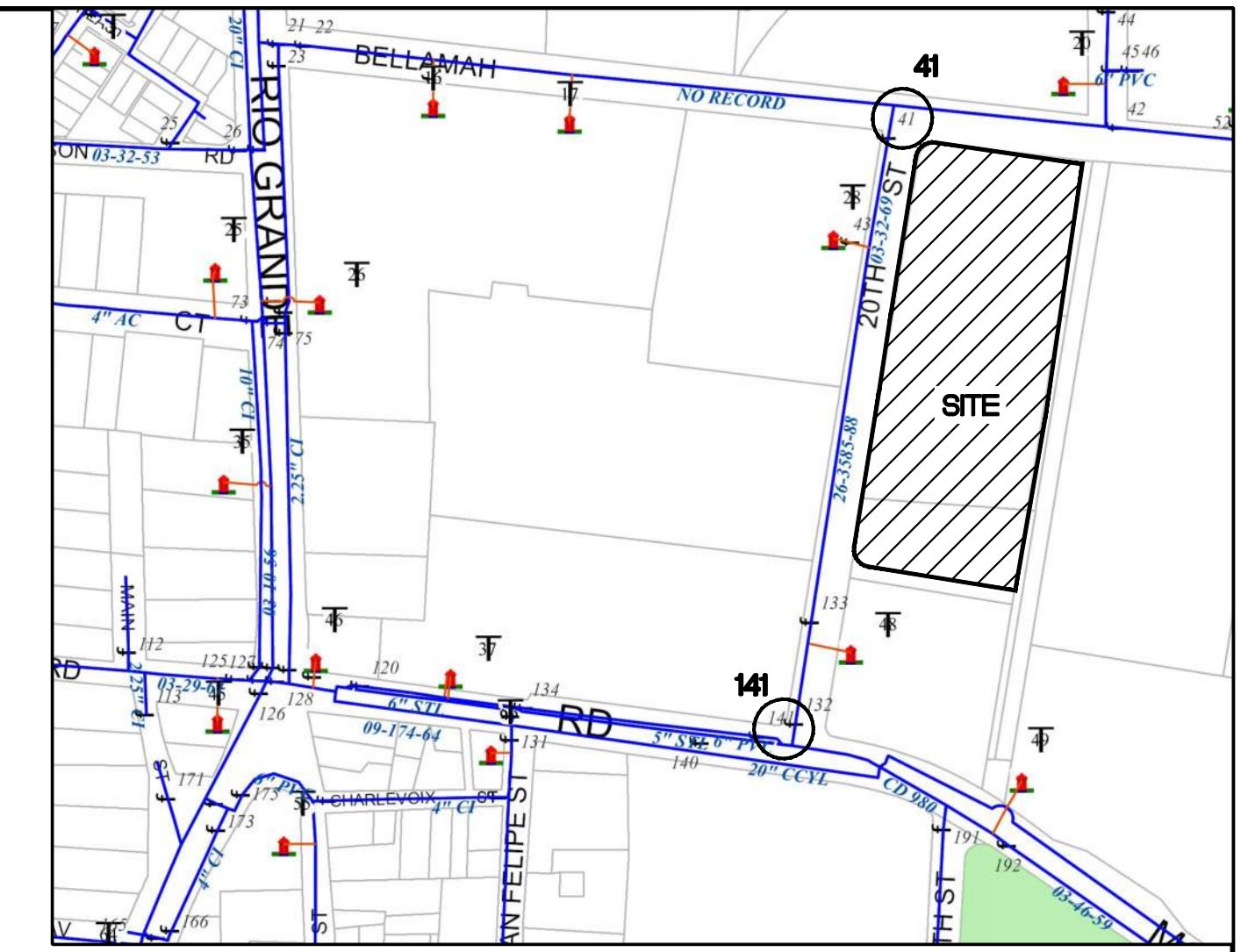


KEYED NOTES

- ① PROPOSED PRIVATE FIRE HYDRANT W/PRIVATE GATE VALVE PER COA STD. DWG #2340 TO BE PAINTED SAFETY ORANGE
- ② 6" FIRELINE
- ③ 4" RESIDENTIAL DOMESTIC WATER LINE SERVICE
- ④ 6" PUBLIC GATE VALVE
- ⑤ PROPOSED PUBLIC FIRE HYDRANT W/ PUBLIC GATE VALVE PER COA STD. DWG #2340
- ⑦ EXISTING FIRE HYDRANT
- ⑧ 6" GATE VALVE (PRIVATE)
- ⑨ TRANSFORMER
- ⑩ GENERATOR
- ⑪ BUILDING WATER SERVICE ENTRANCE
- ⑫ RESIDENTIAL 3" WATER METER PIT PER COA STD. DWG #2370
- ⑬ FDC
- ⑭ REMOVE AND REPLACE EXISTING ASPHALT PAVING PER COA STD DWG #2405B
- ⑮ POST INDICATOR VALVE
- ⑰ GAS UTILITY METER
- ⑱ 6" SANITARY SEWER CONNECTION. SEE PLUMBING PLANS FOR BUILDING CONNECTION.
- ⑳ 2" COMMERCIAL WATER METER
- ㉑ 3/4" LANDSCAPE WATER METER
- ㉒ 2.5" COMMERCIAL DOMESTIC LINE

LEGEND

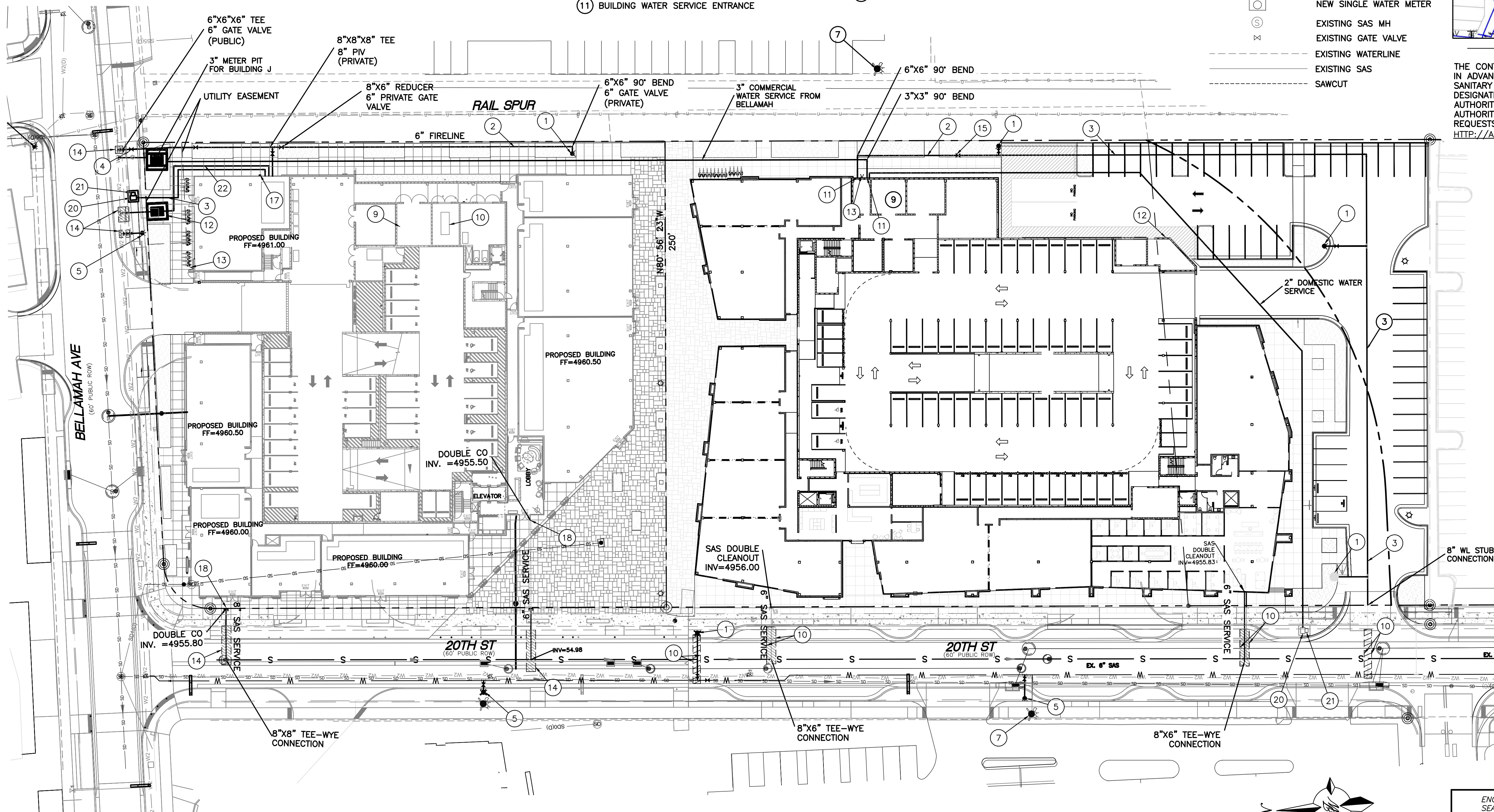
- CURB & GUTTER
- - - BOUNDARY LINE
- - - EASEMENT
- - - CENTERLINE
- - - RIGHT-OF-WAY
- ▭ BUILDING
- ▨ PROPOSED SIDEWALK
- - - EXISTING CURB & GUTTER
- ▨ LANDSCAPING
- 8" SAS SANITARY SEWER LINE
- 8" WL WATERLINE
- PROPOSED HYDRANT
- ⊕ NEW WATER VALVE
- NEW SINGLE WATER METER
- ⊙ EXISTING SAS MH
- ⊙ EXISTING GATE VALVE
- - - EXISTING WATERLINE
- - - EXISTING SAS
- - - SAWCUT



THE CONTRACTOR SHALL COORDINATE WITH THE WATER AUTHORITY SEVEN (7) DAYS IN ADVANCE OF PERFORMING WORK THAT WILL AFFECT THE PUBLIC WATER OR SANITARY SEWER INFRASTRUCTURE. WORK REQUIRING SHUTOFF OF FACILITIES DESIGNATED AS MASTER PLAN FACILITIES MUST BE COORDINATED WITH THE WATER AUTHORITY 14 DAYS IN ADVANCE OF PERFORMING SUCH WORK. ONLY WATER AUTHORITY CREWS ARE AUTHORIZED TO OPERATE PUBLIC VALVES. SHUTOFF REQUESTS MUST BE MADE ONLINE AT [HTTP://ABCWUA.ORG/CONTENT/VIEW/463/729/](http://abcwua.org/content/view/463/729/).

GENERAL UTILITY NOTES:

1. ALL WATER AND SEWER UTILITY WORK TO BE DONE IN ACCORDANCE WITH COA STANDARDS AND SPECIFICATIONS LATEST EDITION.
2. 4' MINIMUM BURY REQUIRED FOR ALL UTILITIES UNLESS OTHERWISE NOTED.
3. REFERENCE ARCHITECTURAL PLANS FOR WATER LINE RISER LOCATIONS.
4. CLEAN OUTS ARE TO BE BUILT PER UNIFORM PLUMBING CODE STANDARDS.
5. ALL PLUMBING PIPE MATERIAL TO BE USED PER UPC.
6. FIRE LINE AND DOMESTIC WATERLINE MUST HAVE BACKFLOW PREVENTORS PER UPC. IF BACKFLOW PREVENTOR IS INSTALLED EXTERIOR OF BUILDING A HOT BOX SHALL BE INSTALLED AND USED.
7. ALL EX. SD INLETS AND MH SHALL HAVE CONCRETE COLLARS POURED AND BE ADJUSTED TO FINISHED GRADE.
8. ALL EXCAVATION, TRENCHING AND SHORING ACTIVITIES MUST BE CARRIED-OUT IN ACCORDANCE WITH OSHA 29 CFR 1926.650 SUBPART P.
9. ALL UTILITY DISTANCES SHOWN ARE FOR REFERENCE ONLY.
10. PNM HAS NUMEROUS ELECTRIC FACILITIES AT THIS SITE CURRENTLY SERVING EXISTING CUSTOMERS. THE APPLICANT SHALL COORDINATE WITH PNM REGARDING THESE EXISTING FACILITIES. ANY RELOCATION, CHANGES OR REALIGNMENT OF EXISTING ELECTRIC UTILITIES WILL BE THE DEVELOPER EXPENSE. IN SOME CASES, RELOCATION OR CHANGES TO EXISTING FACILITIES MAY NOT BE FEASIBLE DUE TO PHYSICAL, USE OR SAFETY CLEARANCE CONSTRAINTS.
11. PNM WILL REVIEW ALL TECHNICAL NEEDS, ISSUES AND SAFETY CLEARANCES FOR ITS ELECTRIC POWER SYSTEMS. ANY EXISTING AND PROPOSED PUBLIC UTILITY EASEMENTS SHALL BE INDICATED ON THE SITE PLAN UTILITY SHEET PRIOR TO DRB REVIEW. PNM'S STANDARD FOR PUBLIC UTILITY EASEMENTS IS 10 FEET IN WIDTH TO ENSURE ADEQUATE, SAFE CLEARANCES.
12. SCREENING SHALL BE DESIGNED TO ALLOW FOR ACCESS TO UTILITY FACILITIES. IT IS NECESSARY TO PROVIDE ADEQUATE CLEARANCE OF TEN FEET SURROUNDING ALL GROUND-MOUNTED UTILITIES FOR SAFE OPERATION, MAINTENANCE AND REPAIR PURPOSES.
13. COORDINATION WITH WATER AUTHORITY CROSS CONNECTION SECTION WILL BE REQUIRED TO ENSURE PROPER BACKFLOW CONTAINMENT IS IN PLACE PRIOR TO RELEASE OF METER FOR THE SITE. CONTACT THE CROSS CONNECTION SECTION AT 505-289-3454.
14. COORDINATION WITH THE WATER AUTHORITY PRE-TREATMENT ENGINEER IS REQUIRED TO ENSURE THE SITE COMPLIES WITH WATER AUTHORITY SEWER USE ORDINANCE. CONTACT THE PRE-TREATMENT ENGINEER AT 505-289-3439.



INSPECTION NOTE

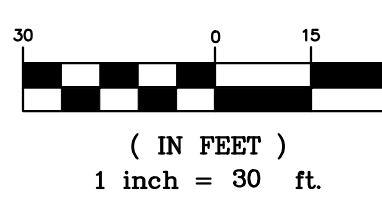
CONTRACTOR SHALL CONSULT THE LOCAL BUILDING DEPARTMENT OFFICIALS FOR ANY PLAN REVIEW, PERMITTING REQUIREMENTS OR BUILDING CODE INSPECTIONS THAT MAY BE REQUIRED TO ENFORCE LOCAL, STATE OR NATIONAL BUILDING CODES PRIOR TO CONSTRUCTING IMPROVEMENTS

CAUTION

ALL EXISTING UTILITIES SHOWN WERE OBTAINED FROM RESEARCH, AS-BUILTS, SURVEYS OR INFORMATION PROVIDED BY OTHERS. IT SHALL BE THE SOLE RESPONSIBILITY OF THE CONTRACTOR TO CONDUCT ALL NECESSARY FIELD INVESTIGATIONS PRIOR TO AND INCLUDING ANY EXCAVATION, TO DETERMINE THE ACTUAL LOCATION OF UTILITIES AND OTHER IMPROVEMENTS, PRIOR TO STARTING THE WORK. ANY CHANGES FROM THIS PLAN SHALL BE COORDINATED WITH AND APPROVED BY THE ENGINEER.



GRAPHIC SCALE



	800 20TH ST ALBUQUERQUE, NM	DRAWN BY SB
	OVERALL SAWMILL UTILITY EXHIBIT	DATE 04/23/24
ENGINEER'S SEAL RONALD R. BOHANNAN P.E. #7868	TIERRA WEST, LLC 5571 MIDWAY PARK PL NE ALBUQUERQUE, NEW MEXICO 87109 (505) 858-3100 www.tierrawestllc.com	DRAWING
		SHEET # MU-1
		JOB # 2022136