

SITE DATA

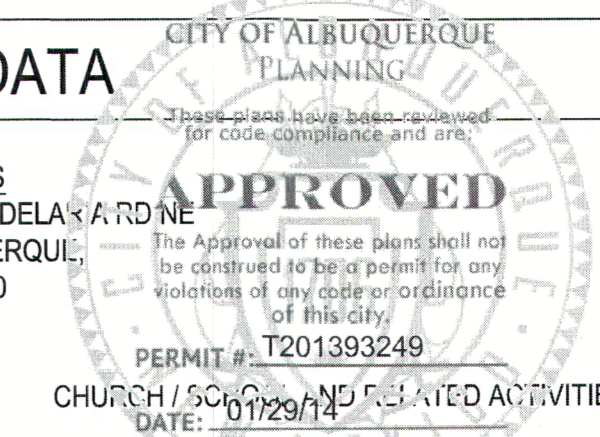
ADDRESS
7701 CANDELARIA ROAD NE
ALBUQUERQUE, NM 87100

ZONING
SU-1

SITE USE
PRIVATE CHURCH AND SCHOOL

BUILDING USE
MAIN SCHOOL BUILDING - K-8 SCHOOL

TOTAL SCHOOL OCCUPANCY



PERMIT # - T201393249
DATE: 07/29/14
CHURCH / SCHOOL AND RELATED ACTIVITIES

CHURCH OFFICES
SCHOOL OFFICES

(250 STUDENTS)

PARKING

1 SPACE PER TEACHER REQUIRED FOR SCHOOL - 12 TEACHERS = 12 PARKING SPOTS
1 SPACE PER FOUR SEATS IN SANCTUARY 510 SEATS = 127 SPACES
TOTAL PARKING EXISTING = 132 SPACES

SPACES ARE NOT CUMULATIVE SINCE CHURCH AND SCHOOL ARE ON DIFFERENT DAYS
ADA REQUIREMENTS 5 SPACES FOR 101-150 SPACES IN PARKING LOT

architecture
interiors
landscape
planning
engineering

**Dekker
Perich
Sabatini**

7601 Jefferson NE Suite 100
Albuquerque, NM 87109
505 761-9700
fax 761-4222
dps@dpsdesign.org

ARCHITECT

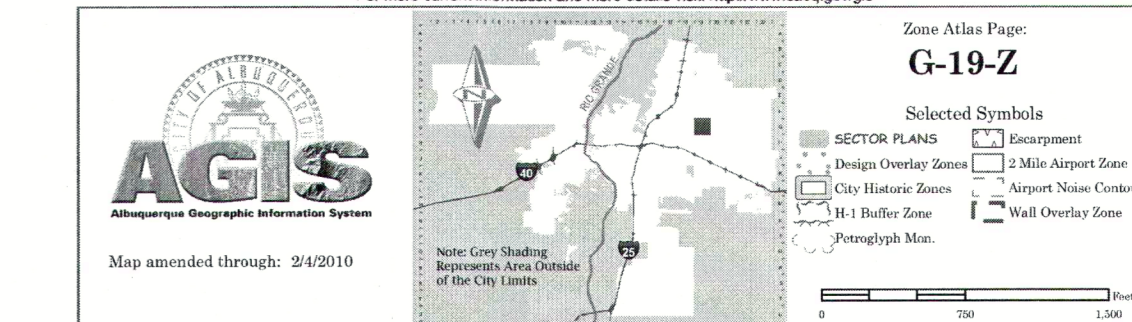
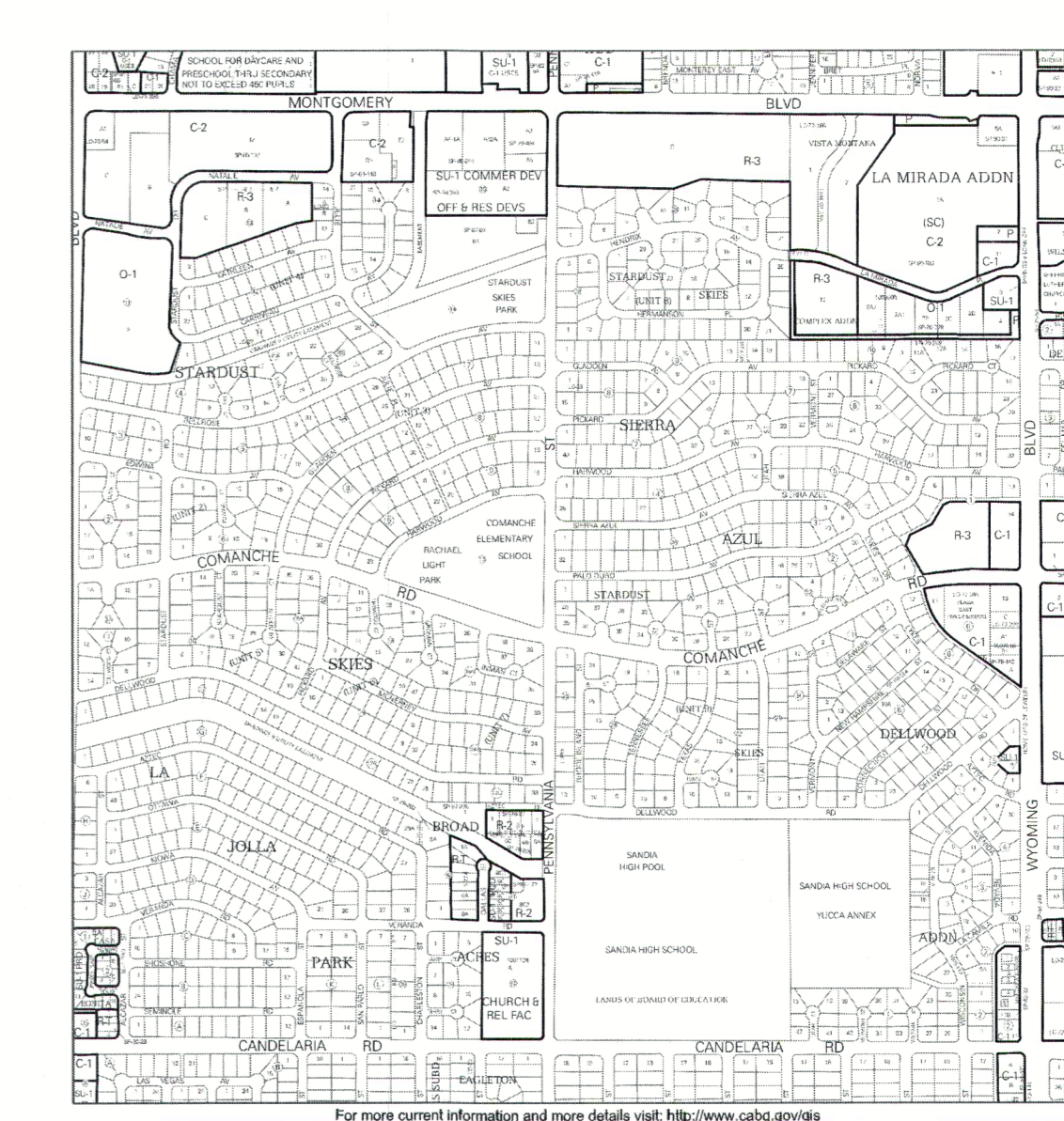
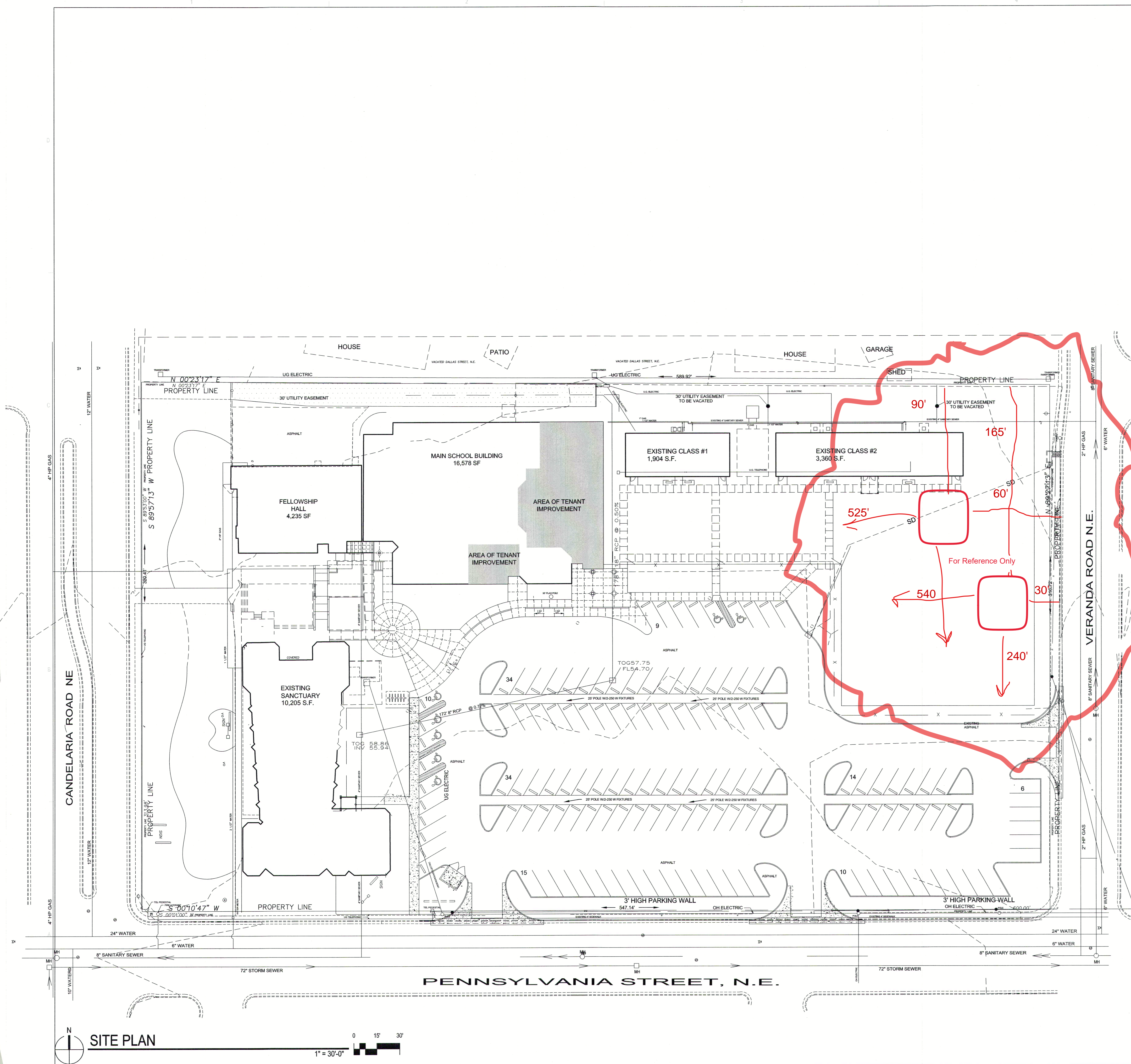
STATE OF NEW MEXICO
CHRISTOPHER R. GUNNING
No. 3203
REGISTERED ARCHITECT

ENGINEER

PROJECT

Christ Lutheran School Building
Tenant Improvement
7701 Candelaria Road NE
Albuquerque, New Mexico 87110

Add 2 14'x14' shingle post fabric shades



VICINITY MAP
Portion of:
Zone Atlas Map G-19-Z

REVISIONS

1	1/8/14	1ST PERMIT REVIEW
2		
3		
4		

DRAWN BY: MRM
REVIEWED BY: RH
DATE: 12/24/2013
PROJECT NO.: 13-0066.003

DRAWING NAME
SITE PLAN

SHEET NO.
AS-101
OF

SITE PLAN

1" = 30'-0"

0 15' 30'