

GENERAL NOTES

DESIGN LOADS

| | |
|---------------|--|
| BUILDING CODE | INTERNATIONAL BUILDING CODE 2015 |
| LIVE LOADS | 5 PSF |
| SNOW LOAD | 5 PSF |
| WIND LOADS | 115 MPH* and 180 MPH with Fabric Off 3-Sec. Gust, RISK CATEGORY II & EXPOSURE C |

* 115 MPH ACCORDING TO THE ULTIMATE WIND SPEED MAPS OF ASCE 7-10 IS EQUIVALENT TO THE NOMINAL WIND SPEED OF 90 MPH ACCORDING ASCE 7-05 AND IBC 2015 EQ. 16-33.

STRUCTURAL STEEL

- ALL STRUCTURAL SHAPES SHALL BE COLD FORMED HSS ASTM A500 GRADE C. UNLESS OTHERWISE NOTED. TYPICAL MECHANICAL PROPERTIES FOR HSS PRODUCTS:

| | |
|------------------------|---------------------------------------|
| SQUARE AND RECTANGULAR | 50,000 PSI YIELD / 62,000 PSI TENSILE |
| ROUND PIPE | 46,000 PSI YIELD / 62,000 PSI TENSILE |
- ALL GALVANIZED STEEL TUBE PRODUCTS ARE MANUFACTURED PER ASTM A500, TYPICAL MECHANICAL PROPERTIES ACHIEVED FOR GALVANIZED TUBE PRODUCTS:

| | |
|------------|---------------------------------------|
| ROUND TUBE | 45,000 PSI YIELD / 48,000 PSI TENSILE |
|------------|---------------------------------------|
- ALL PLATES SHALL COMPLY WITH ASTM A572 GRADE 50.
- ALL STEEL TUBING SHALL BE TRIPLE COATED FOR RUST PROTECTION USING THE IN-LINE ELECTROPLATING COAT PROCESS. TUBING SHALL BE INTERNALLY COATED WITH ZINC AND ORGANIC COATINGS TO PREVENT CORROSION AS MANUFACTURED BY ALLIED TUBE & CONDUIT.
- STRUCTURAL STEEL SHALL BE DETAILED, FABRICATED AND ERECTED IN ACCORDANCE WITH A.I.S.C. SPECIFICATIONS.
- ALL SHOP WELDS SHALL BE EXECUTED IN ACCORDANCE WITH THE LATEST EDITION OF THE AMERICAN WELDING SOCIETY (AWS) D1.1 SPECIFICATIONS. ALL WELDS SHALL BE CONTINUOUS WHERE LENGTH IS NOT GIVEN, UNLESS OTHERWISE SHOWN OR NOTED ON DRAWINGS. ALL WELDS SHALL DEVELOP THE FULL STRENGTH OF THE WEAKER MEMBER. ALL WELDS SHALL BE MADE USING E70XX .045 WIRE.
- SHOP CONNECTIONS SHALL BE WELDED UNLESS NOTED OTHERWISE. FIELD CONNECTIONS SHALL BE AS INDICATED ON THE DRAWINGS (IF REQUIRED). ALL FILLET WELDS SHALL BE A MINIMUM OF 3/16" UNLESS OTHERWISE NOTED. FIELD WELDS SHALL NOT BE ALLOWED.
- ALL HIGH STRENGTH BOLTS SHALL COMPLY WITH ASTM F3125 GRADE A325 (GALVANIZED). ALL NUTS SHALL COMPLY WITH ASTM A563DH, AND WASHERS SHALL COMPLY WITH ASTM F436.
- ALL HIGH STRENGTH BOLTS SHALL BE TIGHTENED TO A SNUG TIGHT CONDITION.
- ALL STAINLESS STEEL BOLTS / STUDS SHALL COMPLY WITH ASTM F-593, ALLOY GROUP 1 OR 2. ALL NUTS SHALL COMPLY WITH ASTM F-594 ALLOY GROUP 1 OR 2.
- ALL STRUCTURAL STEEL SHALL BE POWDER COATED WITH ONE SHOP COAT (2.5 MILS MIN.) OF ZINC-RICH PRIMER, UNDERCOAT, AND FINISH COAT, OR EQUIVALENT PAINT SYSTEM. THIS COAT IS A WEATHER RESISTANT POWDER COATING BASED ON POLYESTER TGIC (MANUFACTURED BY SHERWIN WILLIAMS, ASKO NOBEL, PPG OR TIGER DRYLAC). TO ACHIEVE OPTIMUM ADHESION, IT IS RECOMMENDED THAT THE PROPER TREATMENT AND DRYING TAKE PLACE BEFORE COATING. POLYESTER POWDER (TGIC) SPECIFICATIONS SHALL BE AS FOLLOWS:
 - PENCIL HARDNESS (ASTM D-3363).
 - HUMIDITY (ASTM D-2247).
 - SOLVENT RESISTANCE (PCI METHOD) - 50 DBL RUBS SL. SOFTNESS.

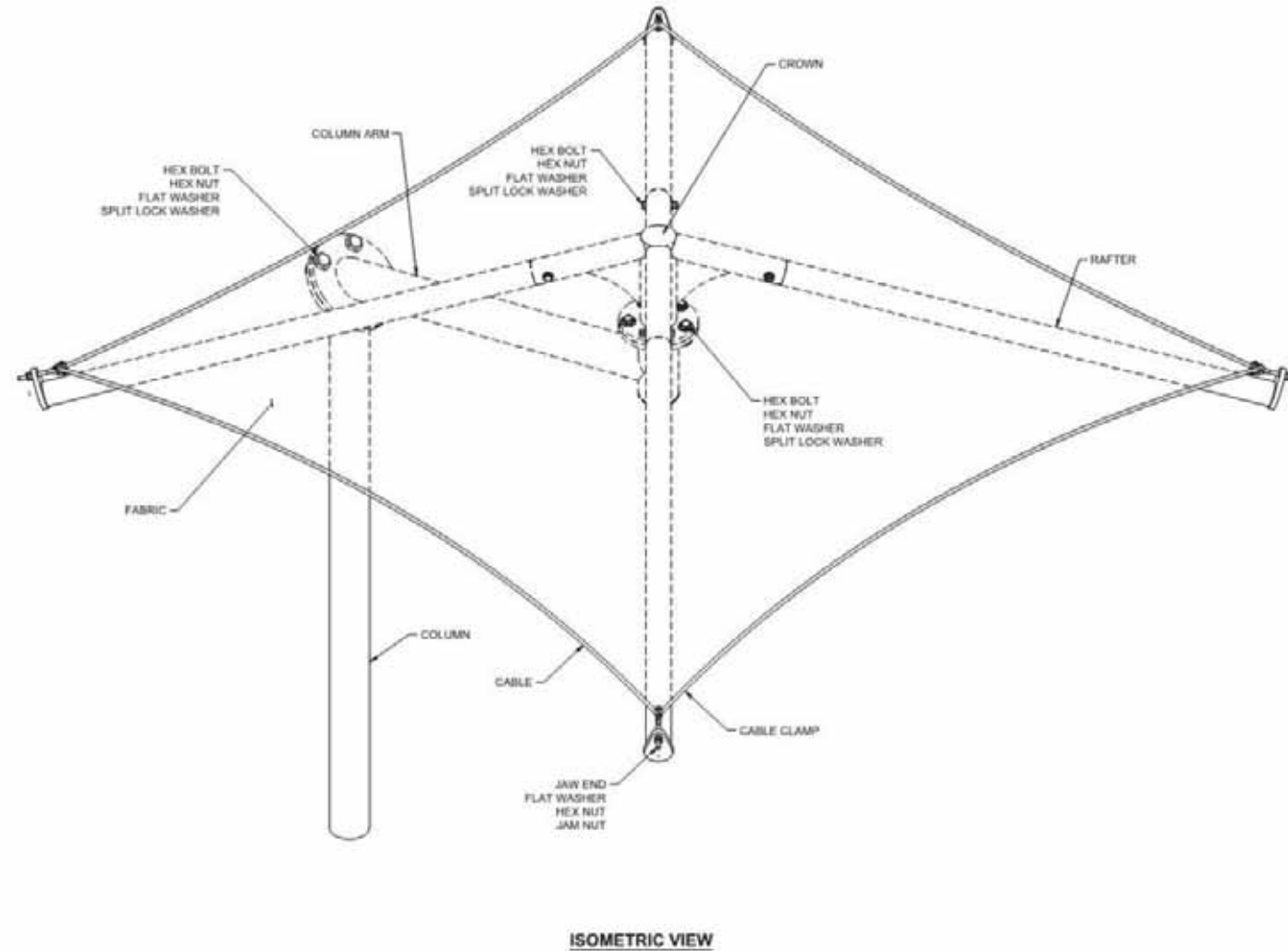
FABRIC SPECIFICATION

- FABRIC SHALL BE A HIGH DENSITY POLYETHYLENE WITH ULTRA VIOLET ADDITIVES, WITH MONOFILAMENT AND TAPE CONSTRUCTION GIVING A STABLE MATERIAL AND RACHEL KNITTED TO ENSURE MATERIAL WILL NOT UNRAVEL IF CUT
- | | | |
|----------------|--------------------------------------|--------------------------------------|
| | <u>SOLID COLORS</u> | <u>STRIPE COLORS</u> |
| TEAR STRENGTH | WARP 220.4622 LB WEFT 462.9707 LB | WARP 182.9836 LB WEFT 401.2413 LB |
| BURST STRENGTH | 37.7098 PSIA | 33.0686 PSIA |
| FADING | MINIMUM FADING AFTER 5 YEARS | |

LIFE EXPECTANCY: A MINIMUM OF 8 YEARS CONTINUOUS EXPOSURE TO THE SUN
FIRE TEST ON FABRIC: NFPA 701 TEST 2 AND ASTM E 84
- THREAD-PTFE (TEFLON) USED MEET THE FOLLOWING SPECIFICATIONS: HIGH STRENGTH, LOW SHRINKAGE, WIDE TEMPERATURE RANGE, FLEX ABRASION RESISTANT AND UV RADIATION IMMUNITY. LOCKSTITCH - 1200 DENIER. CHAINSTITCH THREAD - 2400 DENIER.

AIRCRAFT CABLE

- WIRE ROPE CABLE SHALL BE 7x19 STRAND CORE GALVANIZED WIRE ROPE WITH A BREAKING STRENGTH VALUE OF 7,000 LBS (1/4" DIAMETER)
- CABLES SHALL BE FED THROUGH THE FABRIC SLEEVES AROUND THE PERIMETER OF THE CANOPY AND TENSIONED UNTIL THE FABRIC PANELS (DESIGNED PURPOSEFULLY UNDERSIZED) REACH A TAUNT APPEARANCE. ANY LONG TERM CABLE SAG SHALL BE MINIMIZED DURING THE MAINTENANCE RE-TIGHTENING VISITS AS REQUIRED.



LIST OF MATERIALS

| ITEM | QTY | DESCRIPTION | SMI PART No. |
|-------------------|-----|---|------------------------|
| BOLT | 5 | BOLT,HEX,3/4"-10 x 3",GLV ASTM A325 | 308073 |
| HEX NUT | 5 | NUT,HEX,3/4",GLV A194 2H | 307687 |
| WASHER | 10 | WASHER,FLAT,3/4",GLV ASTM F436 | 307624 |
| SPLIT LOCK WASHER | 5 | WASHER,SPLIT LOCK, 3/4",GLV | 307832 |
| BOLT | 4 | BOLT,HEX,1"-8 x 4",GLV ASTM A325 | 307722 |
| HEX NUT | 4 | NUT,HEX,1"-8, GLV, A194 2H | 307968 |
| SPLIT LOCK WASHER | 4 | WASHER,SPLIT LOCK, 1",GLV | 307620 |
| FLAT WASHER | 8 | WASHER,FLAT,1",GLV ASTM F436 | 307619 |
| ANCHOR ROD | 4 | ANCHOR ROD Sets,7/8"x24" F1554 GR55 | 307612 |
| BOLT | 4 | BOLT,HEX,1/2"-13 x 4-1/2",GLV ASTM A325 | 309108 |
| HEX NUT | 4 | NUT,HEX,1/2",GLV 1213 A 194 2H | 308069 |
| WASHER | 4 | WASHER,SPLIT LOCK, 1/2",GLV | 307625 |
| FLAT WASHER | 8 | WASHER,FLAT,1/2" GLV ASTM F436 | 307622 |
| JAW END | 4 | JAW,W/BNC RH&HDW,1/2"x6" DF GLV | 308046 |
| FLAT WASHER | 4 | WASHER,FLAT,1/2" GLV ASTM F436 | 307622 |
| HEX NUT | 4 | NUT,HEX,1/2",GLV 1213 A 194 2H | 308069 |
| JAM NUT | 4 | NUT,HEX,1/2"-13NC,GLV,(JAM NUT) | 308081 |
| CABLE CLAMP | 4 | CLAMPS,CABLE,1/4" DF GLV | 307633 |
| COLUMN | 1 | HSS 5.563 x 0.258 | SPUBPCOL-CANT-5663-112 |
| FABRIC | 1 | FABRIC SHADESURE ROYAL BLUE | 200000SRB |
| CABLE | 1 | WIRE ROPE, 7x19, 1/4", GALV | 307604 |
| RAFTER | 4 | 3.5 GA 08 RD TUBING | SPR-350-QRE-112 |
| BEAM | 1 | HSS 5.563 x 0.258 | SPARM-CANT-5663-88 |
| CROWN | 1 | UNPAINTED SPPCP-350-F3-QRE | SPPCP-350-F3-QRE |

NOTICE

- FABRIC TOP NEEDS TO BE REMOVED IF SNOW EXCEEDING 5 PSF IS ANTICIPATED
- FABRIC TOP NEEDS TO BE REMOVED IF WINDS EXCEEDING 115 MPH ARE ANTICIPATED. SEE NOTES FOR DESIGN LOADS

CODE ANALYSIS

| BUILDING | OCCUPANCY | CONSTRUCTION TYPE | AREA (SQFT) | OCCUPANT LOAD |
|------------------------------------|-----------|-------------------|-------------|---------------|
| SHADE STRUCTURE 14' 0" x 14' 0" | U | V-B | 196 | N/A |

THESE PLANS AND SPECIFICATIONS ARE THE PROPERTY OF USA SHADE AND FABRIC STRUCTURES AND SHALL NOT BE REPRODUCED WITHOUT THEIR WRITTEN PERMISSION.



CORPORATE HEADQUARTERS
2580 ESTERS BLVD., SUITE 100
DFW AIRPORT, TX 75261
800-966-5005

CERTIFICATIONS:
IAS CERTIFICATION No: FA-428
CLARK COUNTY MANUFACTURER CERTIFICATION NUMBER (NEVADA): 355

CUSTOMER:
Creative Recreational Designs
PROJECT NAME:
82500-Christ Lutheran School
LOCATION:
Albuquerque NM
PROJECT NUMBER:
Q-024676

STRUCTURE TYPE:
Single Post Pyramid Cantilever QRE 127

SIZE:
14' 0" x 14' 0" x 8' 0"e

SCALE: AS NOTED

DRAWING SIZE

B

| | |
|------------------------------|----|
| ENG | MP |
| CHK | MP |
| DRW | MP |
| DATE | |
| DESCRIPTION FOR CONSTRUCTION | |
| RELEASE FOR CONSTRUCTION | |
| REV | NC |

| | |
|--------------|----|
| Eng. By: | MP |
| Design By: | MP |
| Approved By: | MP |

DRAWING DESCRIPTION:
NOTES / LOM

| | |
|------|------|
| DWG. | |
| PAGE | 1000 |

REV
NC



THESE PLANS AND SPECIFICATIONS ARE THE PROPERTY OF USA SHADE AND FABRIC STRUCTURES AND SHALL NOT BE REPRODUCED WITHOUT THEIR WRITTEN PERMISSION.



CORPORATE HEADQUARTERS
2580 ESTERS BLVD., SUITE 100
DFW AIRPORT, TX 75261
800-966-5005

CERTIFICATIONS:
IAS CERTIFICATION No: FA-428
CLARK COUNTY MANUFACTURER CERTIFICATION NUMBER (NEVADA): 355

CUSTOMER:
Creative Recreational Designs
PROJECT NAME:
82500-Christ Lutheran School
LOCATION:
Albuquerque NM
PROJECT NUMBER:
Q-024676

STRUCTURE TYPE:
Single Post Pyramid Cantilever QRE 127
SIZE:
14' 0" x 14' 0" x 8' 0"e

SCALE: AS NOTED

DRAWING SIZE

B

| REV | DESCRIPTION | DATE | DRW | CHK | ENG |
|-----|--------------------------|------|-----|-----|-----|
| NC | RELEASE FOR CONSTRUCTION | | MP | MP | MP |

Eng. By: MP
Design By: MP
Approved By: MP

DRAWING DESCRIPTION:
ELEVATIONS AND DETAILS

DWG. PAGE 2000

REV **NC**

TABLE OF DIMENSIONS

| W | L | H | C | HT | CL | COL | RL |
|--------|--------|-------|-------|--------|--------|-------|-------|
| 14' 0" | 14' 0" | 8' 0" | 3' 8" | 11' 8" | 0' 11" | 9' 4" | 9' 4" |

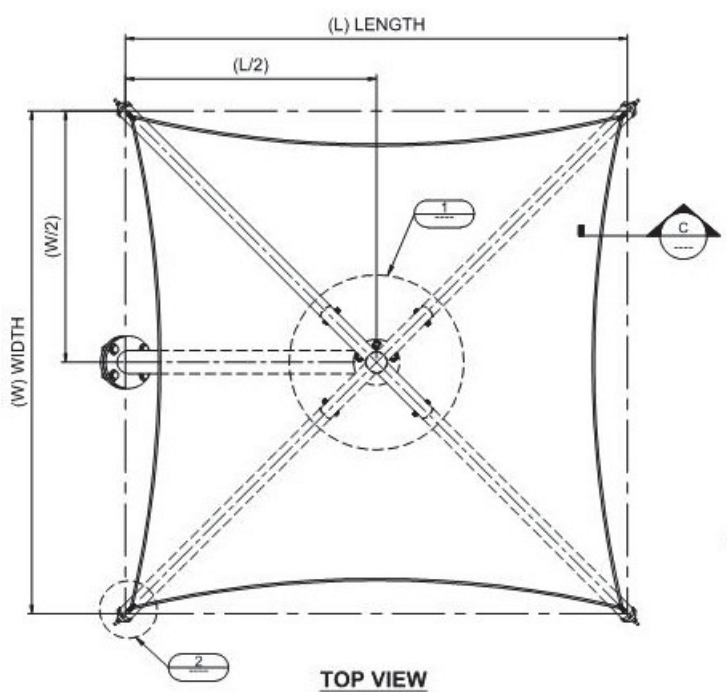
TABLE OF DIMENSIONS KEY

| | |
|-----|--------------------------|
| W | WIDTH |
| L | LENGTH |
| H | ENTRY HEIGHT |
| C | SHADE HEIGHT |
| HT | TOTAL HEIGHT |
| CL | FABRIC CATENARY - LENGTH |
| COL | COLUMN LENGTH |
| RL | RAFTER LENGTH |

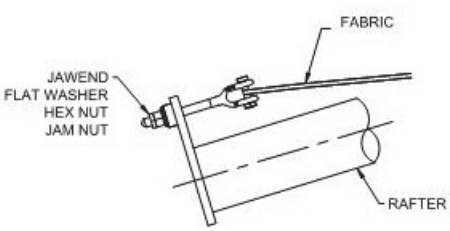
PLAN NORTH



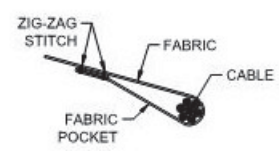
FOR TRUE NORTH
SEE CUSTOMER'S
SITE PLAN



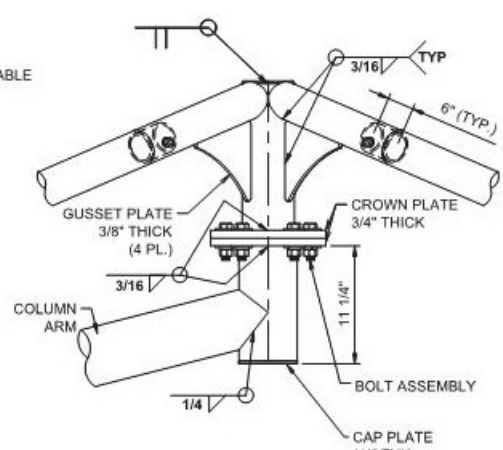
TOP VIEW



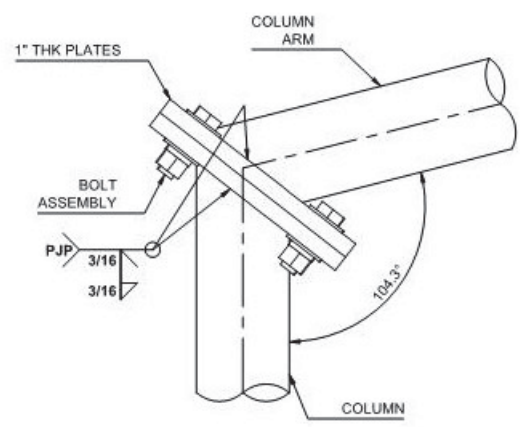
VIEW B-B



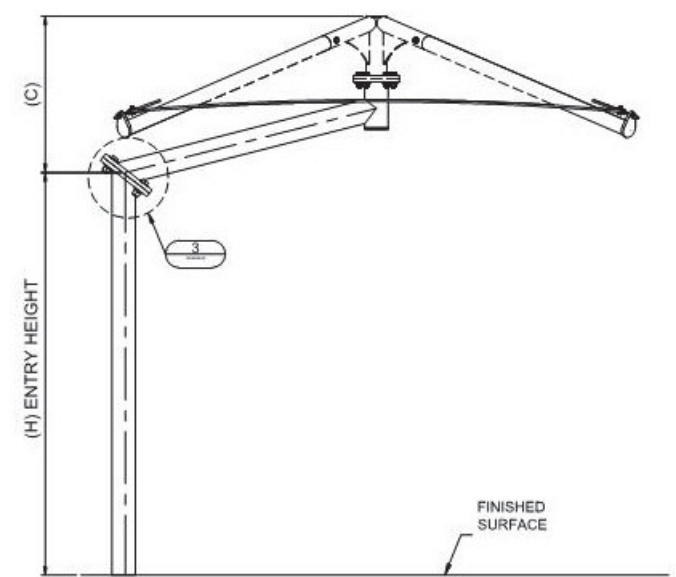
SECTION C-C



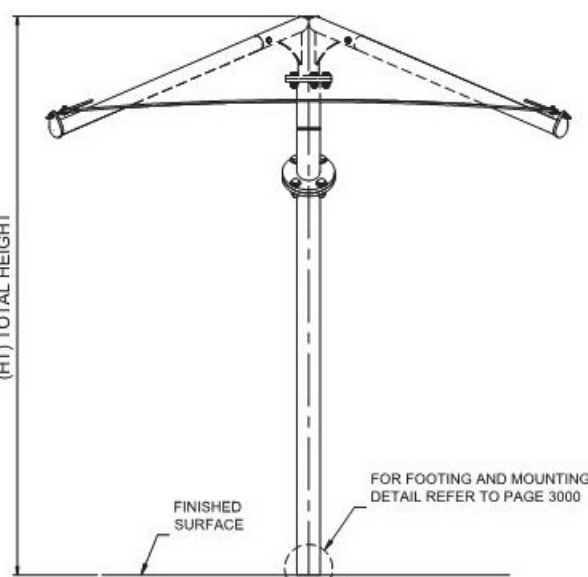
VIEW A-A
(FABRIC OMITTED FOR CLARITY)



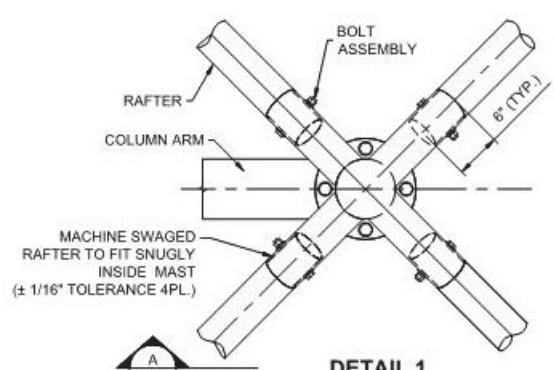
DETAIL 3



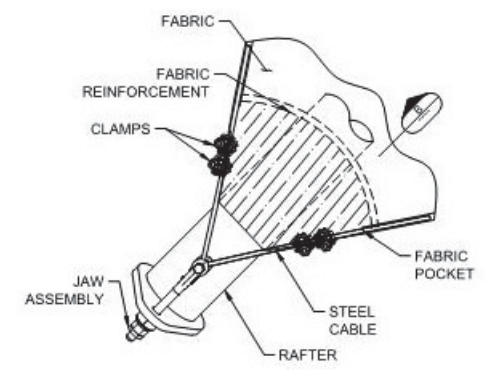
FRONT ELEVATION



SIDE ELEVATION



DETAIL 1
(FABRIC OMITTED FOR CLARITY)



DETAIL 2





THESE PLANS AND SPECIFICATIONS ARE THE PROPERTY OF USA SHADE AND FABRIC STRUCTURES AND SHALL NOT BE REPRODUCED WITHOUT THEIR WRITTEN PERMISSION.



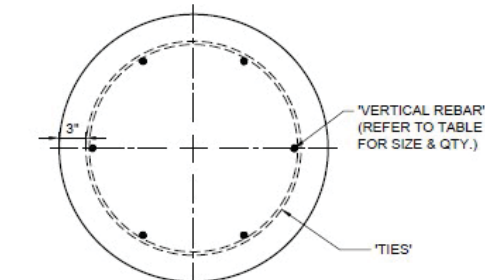
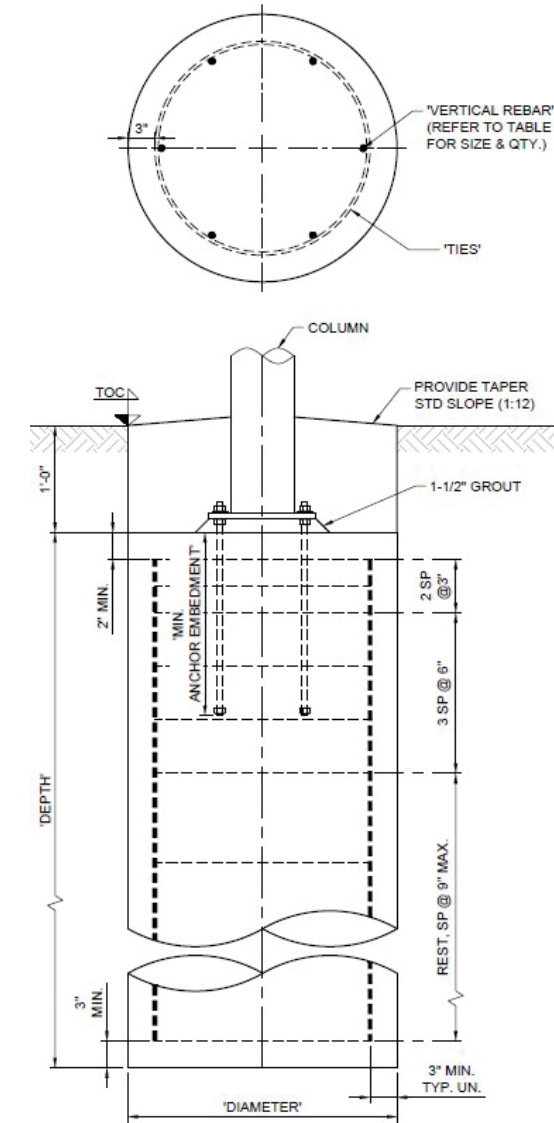
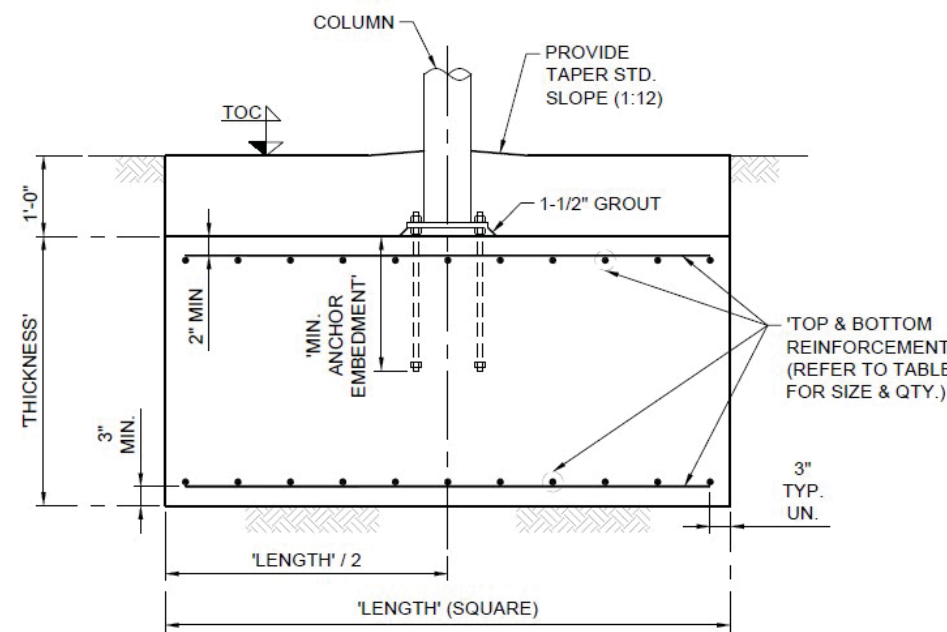
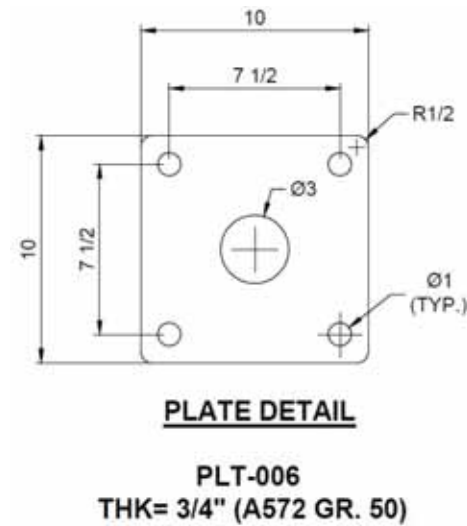
CORPORATE HEADQUARTERS
2580 ESTERS BLVD., SUITE 100
DFW AIRPORT, TX 75261
800-966-5005

REINFORCED CONCRETE NOTES

- CONCRETE WORK SHALL BE EXECUTED IN ACCORDANCE WITH THE LATEST EDITION OF THE AMERICAN CONCRETE INSTITUTE SPECIFICATION FOR STRUCTURAL CONCRETE ACI 301 AND BUILDING CODE ACI 318. CONCRETE SPECIFICATIONS SHALL BE AS FOLLOWS:
 - 28 DAY STRENGTH: 2500 PSI
 - SLUMP: 3-5
 - PORTLAND CEMENT SHALL CONFORM TO C-150
 - AGGREGATE SHALL CONFORM TO ASTM C-33
- ALL REINFORCEMENT STEEL SHALL CONFORM TO ASTM A-615 GRADE 60; AND SHALL BE DETAILED, FABRICATED AND PLACED IN ACCORDANCE WITH THE LATEST ACI SPECIFICATION FOR STRUCTURAL CONCRETE ACI 301, ACI DETAILING MANUAL AND CRSI MANUAL OF STANDARD PRACTICE.
- ALL ANCHOR BOLTS SET IN NEW CONCRETE (WHEN APPLICABLE) SHALL COMPLY WITH ASTM F-1554 GRADE 55 (GALVANIZED).
- ALL NON-SHRINK GROUT SHALL HAVE A MINIMUM 28 DAYS COMPRESSIVE STRENGTH OF 5000 PSI, AND SHALL COMPLY THE REQUIREMENTS OF ASTM C109, ASTM C939, ASTM C1090, ASTM C1107, WHEN APPLICABLE.
- SOIL PARAMETERS FOR FOOTING ANALYSIS; TABLE 1806.2, CLASS : 5 - 1500(PSI)
- FOR SPREAD FOOTING, EDGE OF COLUMN OR ANCHOR BOLTS MUST BE SET AT LEAST 12" FROM THE EDGE OF SPREAD FOOTING EDGE.
- FOR DRILLED PIER, THE EDGE OF COLUMN MUST BE SET AT LEAST 3/4" FROM REBAR WITHIN DRILLED PIER.
- SPREAD FOOTING ALLOWED TO BE ROTATED AS REQUIRED.
- ANCHOR ROD Sets, 7/8"x24" F1554 GR55, Qty 4

| TABLE FOR SPREAD FOOTING | | | | | | | | |
|--------------------------|-----------|------------------------------|------|--------------|------|-------------------------------|---|----|
| LENGTH | THICKNESS | TOP AND BOTTOM REINFORCEMENT | | | | MIN. COLUMN EMBEDMENT (EMBED) | MIN. ANCHOR EMBEDMENT (RECESS. & SURFACE) | |
| (FT) | (FT) | QTY. | SIZE | SPACING (IN) | | (IN) | (IN) | |
| 5.00 | 3.00 | 7 | #5 | @ | 9.00 | O.C.E.W. | 33 | 19 |

| TABLE FOR NON-CONSTRAINED DRILLED PIER FOOTING | | | | | | | | |
|--|-------|----------------|------|------|-------------|-------------------------------|---|----|
| DIAMETER | DEPTH | VERTICAL REBAR | | TIES | | MIN. COLUMN EMBEDMENT (EMBED) | MIN. ANCHOR EMBEDMENT (RECESS. & SURFACE) | |
| (FT) | (FT) | QTY. | SIZE | QTY. | Ø LOOP (FT) | SIZE | (IN) | |
| 2.00 | 7.00 | 6.00 | #8 | 13 | 1.50 | #4 | 36 | 19 |



CERTIFICATIONS:
IAS CERTIFICATION No: FA-428
CLARK COUNTY MANUFACTURER CERTIFICATION NUMBER (NEVADA): 355

CUSTOMER:
Creative Recreational Designs
PROJECT NAME:
82500-Christ Lutheran School
LOCATION:
Albuquerque NM
PROJECT NUMBER:
Q-024676

STRUCTURE TYPE:
Single Post Pyramid Cantilever QRE 127

SIZE:
14' 0" x 14' 0" x 8' 0"e

SCALE: AS NOTED

DRAWING SIZE

B

| REV | DESCRIPTION | DATE | DRW | CHK | ENG |
|-----|--------------------------|------|-----|-----|-----|
| NC | RELEASE FOR CONSTRUCTION | | MP | MP | MP |

Eng. By: MP
Design By: MP
Approved By: MP

DRAWING DESCRIPTION:
FOOTING DETAILS

DWG. PAGE 3000

REV **NC**

