

PLANT SCHEDULE OVERALL

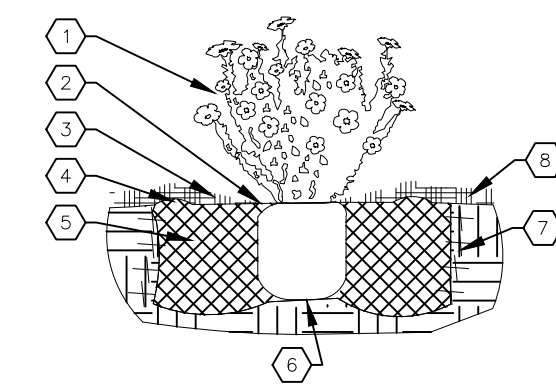
SYMBOL	QTY	BOTANICAL / COMMON NAME	CONT	CAL
TREES				
	12	Acer tataricum 'Hot Wings' / Hot Wings Tatarian Maple	2.5" cal	2.5"
	3	Chilopsis linearis / Desert Willow	2.5" cal	
	10	Fraxinus americana 'Autumn Purple' / Autumn Purple Ash	2.5" cal	2.5"
	6	Gleditsia triacanthos / Honey Locust	2.5" cal	
	9	Malus x 'Radiant' / Radiant Crab Apple	15 gal	
	4	Pinus nigra / Austrian Pine	2" cal	6'
	2	Populus fremontii / Fremont Cottonwood	2.5" cal	
	4	Quercus fusiformis / Texas Live Oak	2.5" cal	
SHRUBS				
	6	Atriplex canescens / Fourwing Saltbush	5 gal	
	6	Caesalpinia gilliesii / Yellow Bird of Paradise	5 gal	Low
	44	Caryopteris x clandonensis / Blue Mist Spirea	5 gal	Low
	6	Chrysothamnus nauseosa / Chamisa	5 gal	RW
	16	Dasylirion texanum / Texas Sotol	5 gal	RW
	6	Fallugia paradoxa / Apache Plume	5 gal	RW
	22	Hesperaloe parviflora / Red Yucca	5 gal	Low+
	12	Hibiscus syriacus / Rose Of Sharon	5 gal	Medium
	12	Lagerstroemia indica 'Dynamite' / Dynamite Crape Myrtle	5 gal	Medium
	34	Rhampholepis indica / Indian Hawthorn	5 gal	Medium
	54	Rosa x 'Double Knockout' / Rose	5 gal	
GRASSES				
	75	Calamagrostis x acutiflora 'Karl Foerster' / Feather Reed Grass	1 gal	Medium

Other Materials

SYMB.	QTY	TYPE
	6 EA	Large Boulders (3' x 2' x 2') To be placed at contractor's discretion
	24950 SF	Landscape Gravel A with Filter Fabric 1-2" Amaretto Brown Gravel
	7400 SF	Oversize Landscape Gravel with Filter Fabric (Except Ponding Area) 2-4" Blue Sais Cobble
	84204 SF	Hydro Seed Pop-Up Irrigation

LANDSCAPE CALCULATIONS

ZONING: CABQ	PD: PLANNED DEVELOPMENT
APPLICABLE REGULATION(S)	IDO 14-16-5-6 AND PART 6-6-2 OF ROA 1994
TOTAL LOT AREA (ACRES)	6.33
TOTAL LOT AREA (SF)	275734.800
BUILDING AREA (SF)	99967
NET LOT AREA (SF)	175,768
REQUIRED LANDSCAPE (%)	15
REQUIRED LANDSCAPE (SF)	26365
LANDSCAPE PROVIDED (SF)	51150
VEGETATIVE COVER (% - REQ)	75.0
VEGETATIVE COVER (SF - REQ)	38363
VEGETATIVE COVER (SF - PROV.)	121621
REQ. TREES - 1ST AND 2ND STORY UNITS	21
PROVIDED UNIT TREES	71

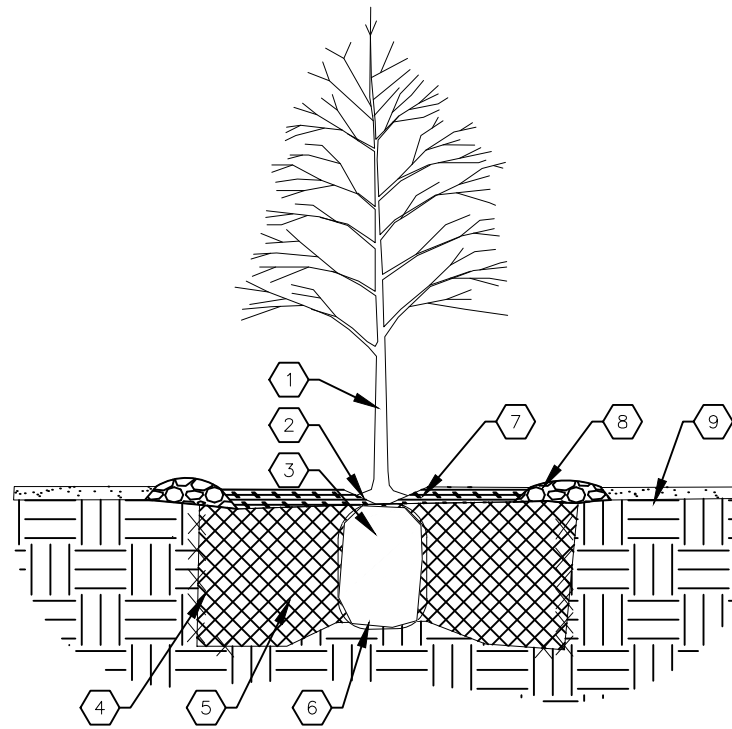


SHRUB PLANTING KEYED NOTES

1. SHRUB LOCATION, SPECIES, AND CONDITION AS PER PLAN.
2. INSTALL WITH TOP OF ROOT BALL FLUSH WITH SUBGRADE (BOTTOM OF MULCH).
3. USE WOOD CHIP MULCH OVER ROOTBALL, FEATHERED TO A 2" DEPTH AND HELD BACK 2" FROM TRUNKS AND STEMS.
4. 2" HIGH X 16" WIDE BERM.
5. BACKFILL PER SPECIFICATIONS. LIGHTLY TAMP IN LIFTS AND WATER-IN TO ELIMINATE VIDS AND AIR POCKETS.
6. UNDISTURBED NATIVE SOIL.
7. SCARIFY AND LOOSEN EDGES OF PLANTING PIT.
8. MULCH - SEE PLANTING PLAN. 3" DEPTH UNLESS OTHERWISE NOTED.

01 SHRUB PLANTING

NTS



TREE PLANTING KEYED NOTES

1. TREE LOCATION, SPECIES, AND CONDITION AS PER PLAN.
2. REMOVING EXISTING SOIL (FROM NURSERY) AS NEEDED TO EXPOSE ROOT FLARE. INSTALL WITH ROOT FLARE FLUSH WITH SUBGRADE (BOTTOM OF MULCH).
3. INSTALL TREE PLUMB. REMOVE WIRE BASKET, WOOD BOX, PLASTIC, TWINE, AND/OR ROPE PRIOR TO BACKFILL. REMOVE BURIAL EXCEPT FROM BOTTOM OF ROOT BALL.
4. SCARIFY AND LOOSEN EDGES OF PLANTING PIT.
5. BACKFILL PER SPECIFICATIONS. LIGHTLY TAMP IN LIFTS AND WATER-IN TO ELIMINATE VIDS AND AIR POCKETS.
6. UNDISTURBED NATIVE SOIL UNDER ROOTBALL TO PREVENT SETTLING.
7. INSTALL WOOD CHIP ORGANIC MULCH OVER ROOTBALL AND BELOW DRIP LINE. GENERALLY, MULCH SHOULD BE HELD 4" BACK FROM TREE TRUNK.
8. 4" HIGH X 16" WIDE COBBLE BERM AT DRIP LINE.
9. MULCH - SEE PLANTING PLAN.

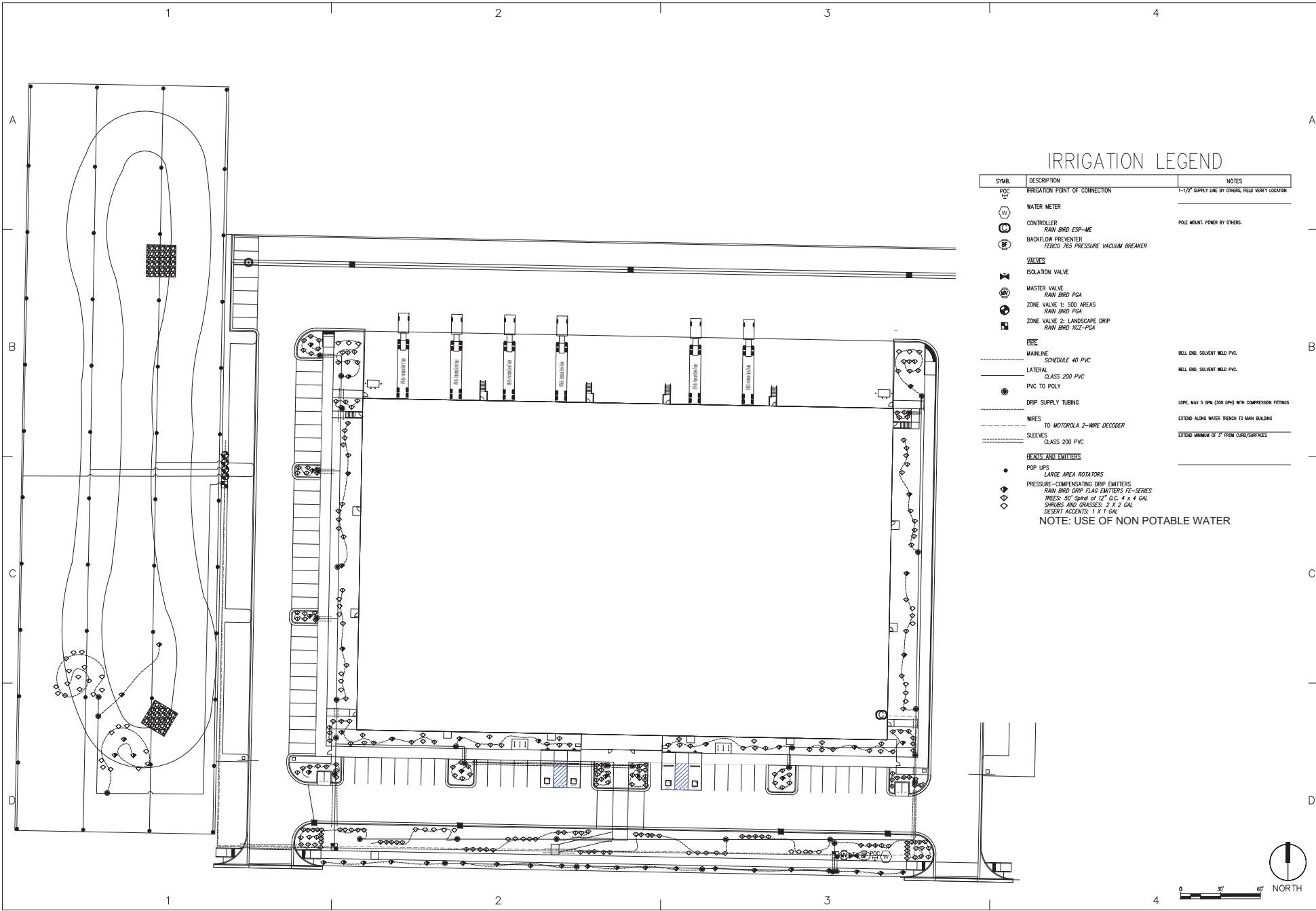
02 TREE PLANTING

NTS

LANDSCAPE CALCULATIONS

ZONING: MESA DEL SOL	PD: PLANNED DEVELOPMENT
APPLICABLE REGULATION(S)	-
TYPE 1: ENTRANCE / COMMON AREAS	TYPE 2: STREET FRONTAGE
TOTAL ENTRANCE / COMMON AREAS AREA (SF)	TOTAL STREET FRONTAGE (SF)
2266	27000
REQUIRED VEGETATIVE COVERAGE (%)	REQUIRED VEGETATIVE COVERAGE (%)
85	85
VEGETATIVE COVERAGE (SF - REQ.)	VEGETATIVE COVERAGE (SF - REQ.)
1,926	22950.0000
VEGETATIVE COVERAGE (SF - PROV.)	VEGETATIVE COVERAGE (SF - PROV.)
11235	43652
TYPE 3: SURFACE PARKING LOT	Type 4: Perimeter and Loading Areas
TOTAL SURFACE PARKING LOT AREA (SF)	Total Street Frontage (SF)
5005	84983
REQUIRED VEGETATIVE COVERAGE (%)	REQUIRED VEGETATIVE COVERAGE (%)
60	60
VEGETATIVE COVERAGE (SF - REQ.)	VEGETATIVE COVERAGE (SF - REQ.)
3003.00000	50989.8000
0	00
VEGETATIVE COVER (SF - PROV.)	VEGETATIVE COVER (SF - PROV.)
3804	57320





IRRIGATION LEGEND

SYMB.	DESCRIPTION	NOTES
POC TFC	IRRIGATION POINT OF CONNECTION	1-1/2" SUPPLY LINE BY OTHERS, FIELD VERIFY LOCATION
(WM)	WATER METER	
(C)	CONTROLLER RAIN BRD ESP-4E	POLE MOUNT, POWER BY OTHERS
(BP)	BACKFLOW PREVENTER FERCO 765 PRESSURE VACUUM BREAKER	
VALVES		
(IV)	ISOLATION VALVE	
(MV)	MASTER VALVE RAIN BRD PGA	
(ZV1)	ZONE VALVE 1: SOO AREAS RAIN BRD PGA	
(ZV2)	ZONE VALVE 2: LANDSCAPE DRIP RAIN BRD XCE-PGA	
PVC		
-----	MAINLINE SCHEDULE 40 PVC	BELL END, SOLVENT WELD PVC
-----	LATERAL CLASS 200 PVC	BELL END, SOLVENT WELD PVC
-----	PVC TO POLY	
-----	DRIP SUPPLY TUBING	LOWL, MAX 5 GPM (300 GPM) WITH COMPRESSION FITTINGS
-----	WRES TO MOTOROLA 2-WIRE DECODER	EXTEND ALONG WATER TRENCH TO MAIN BUILDING
-----	SLEEVES CLASS 200 PVC	EXTEND MINIMUM OF 3" FROM CURB/SURFACES
HEADS AND EMITTERS		
(•)	POP UPS LARGE AREA ROTATORS	
(◊)	PRESSURE-COMPENSATING DRIP EMITTERS RAIN BRD DRIP FLAG EMITTERS FE-SERIES	
(◊)	TREES: 50" SHADE OF 12" O.C. - 1 x 4 GAL	
(◊)	SHRUBS AND GRASSES: 2 x 2 GAL	
(◊)	DESERT ACCENTS: 1 x 1 GAL	
NOTE: USE OF NON POTABLE WATER		



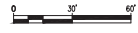
**MDS ROSE WAREHOUSE
PHASE 1**
NW OF CIRCK AVE SE AND HAWKING DR SE
ALBUQUERQUE, NM 87105

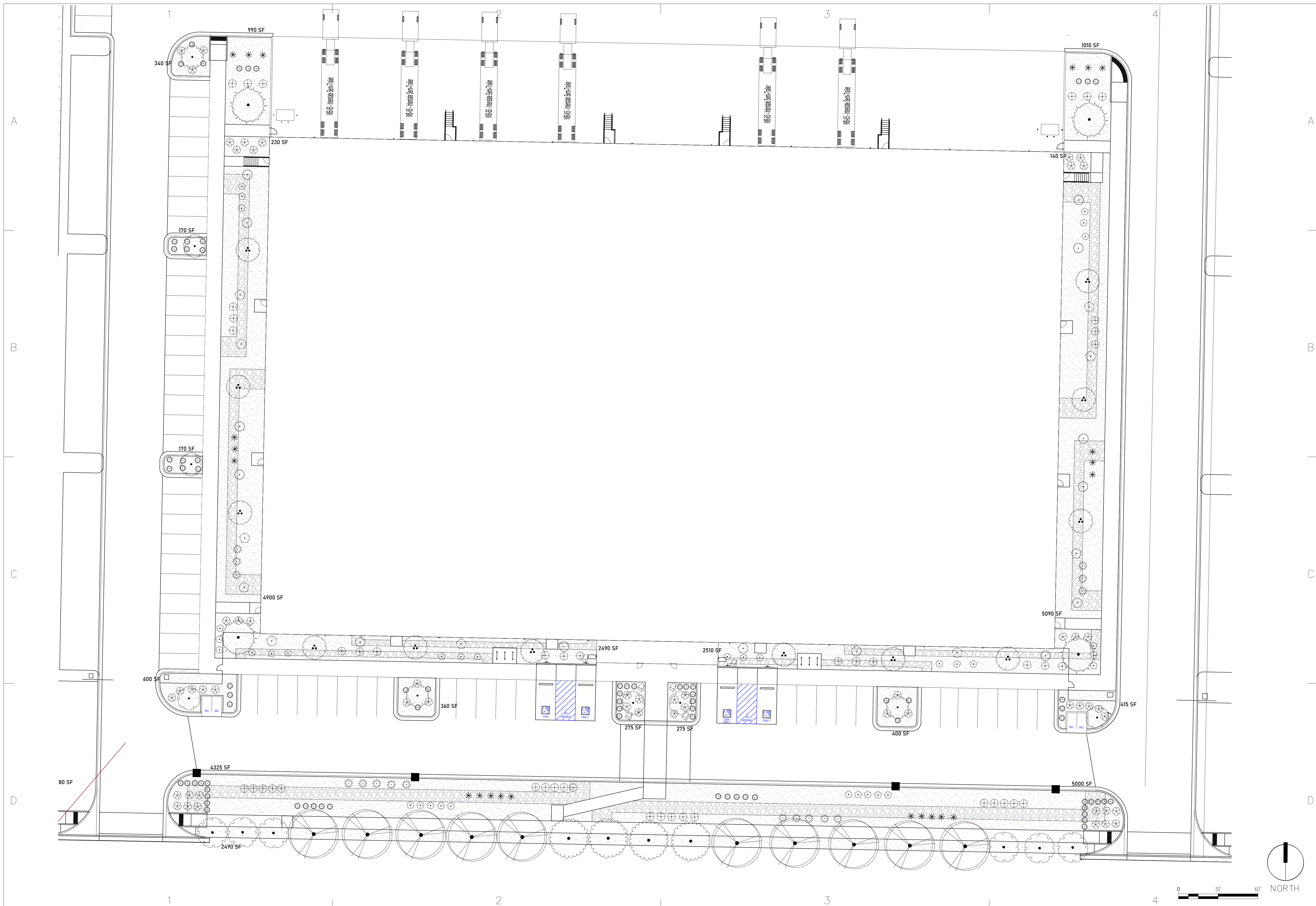
ISSUE DATE: 04/18/2024
FILED
DRAWN BY: JLT
CHECKED BY: ASB

REVISION	DATE	DESCRIPTION

SHEET TITLE
Landscape Plan

SHEET NUMBER
LI-001





**MDS ROSE WAREHOUSE
PHASE 1**
NW OF CIRCK AVE SE AND HAWKING DR SE
ALBUQUERQUE, NM 87105

ISSUE DATE: 05/01/2024
FILE:
DRAWN BY: JFL
CHECKED BY: AGB

REVISION	DATE	DESCRIPTION

SHEET TITLE
Landscape Plan
SHEET NUMBER
LP-001