



**ALBUQUERQUE FIRE MARSHAL'S  
DIVISION OFFICE PLANS  
CHECKING DIVISION**

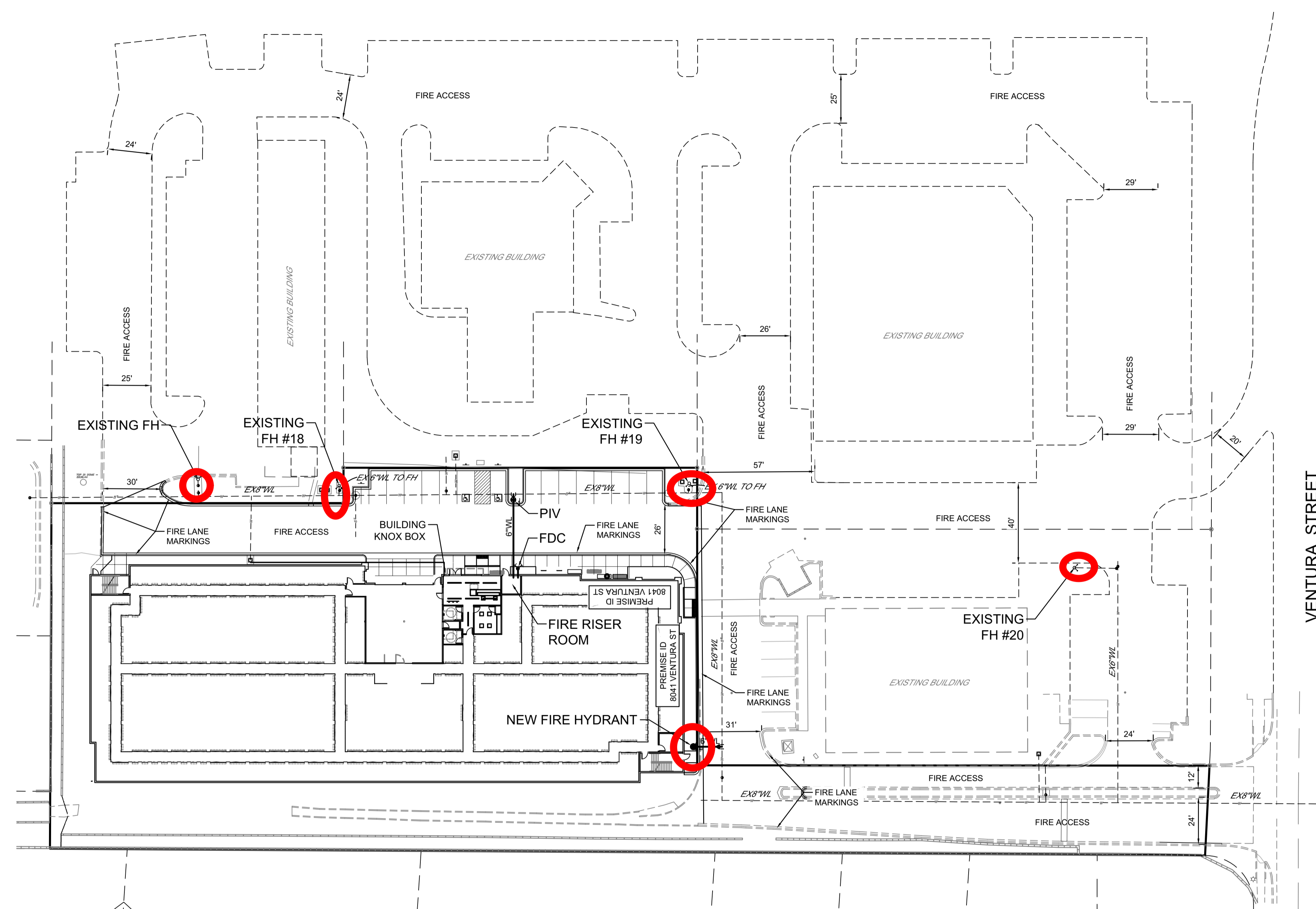
**PERMIT**

PERMIT NUMBER: FP-22-011013  
APPROVED DATE: 07/26/23

**APPROVED**

THESE CONSTRUCTION DOCUMENTS WERE REVIEWED AND APPROVED BY THE ALBUQUERQUE FIRE MARSHAL'S OFFICE IN ACCORDANCE WITH THE CITY ORDINANCE, THE INTERNATIONAL FIRE CODE, AND NFPA STANDARDS. THIS PERMIT IS VALID FOR 180 DAYS. FINAL INSPECTION IS REQUIRED.

**FIRE FLOW:** 1875GPM 2HYDRANTS



VENTURA STREET

**BUILDING INFORMATION**

8041 VENTURA ST. NE  
ALBUQUERQUE, NM

32,502 SQ. FT BUILDING  
29' - 8" BUILDING HEIGHT  
OCCUPANCY GROUP - S-1  
TYPE IIB CONSTRUCTION  
SPRINKLED  
FLOWS = 6500 GPM / 2 = 3250 GPM  
= 4 FH

3 EXISTING FIRE HYDRANTS NEAR SITE  
1 NEW FIRE HYDRANT.

FDC IS WITHIN 100' OF A FIRE HYDRANT AND INLETS ARE 18" TO 48" ABOVE GRADE.

BUILDING TO HAVE PREMISE ID SIGN VISIBLE FROM VENTURA ST. AND PASEO DEL NORTE.

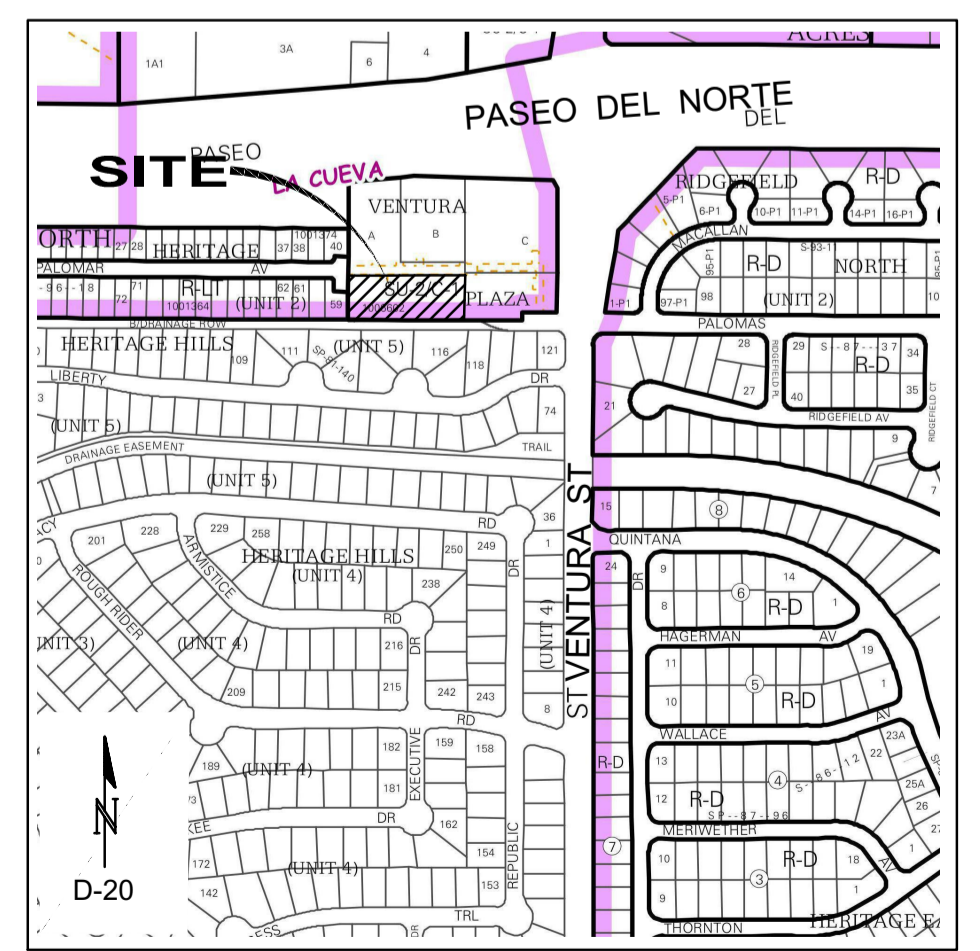
ALL ACCESS ROADS AND FIRE LANES HAVE GRADES LESS THAN 10% AND A LOAD CAPACITY OF 75,000 POUNDS.

ALL ACCESS ROADS AND FIRE LANES WILL ACCOMMODATE A 28' MINIMUM TRUCK TURNING RADIUS.

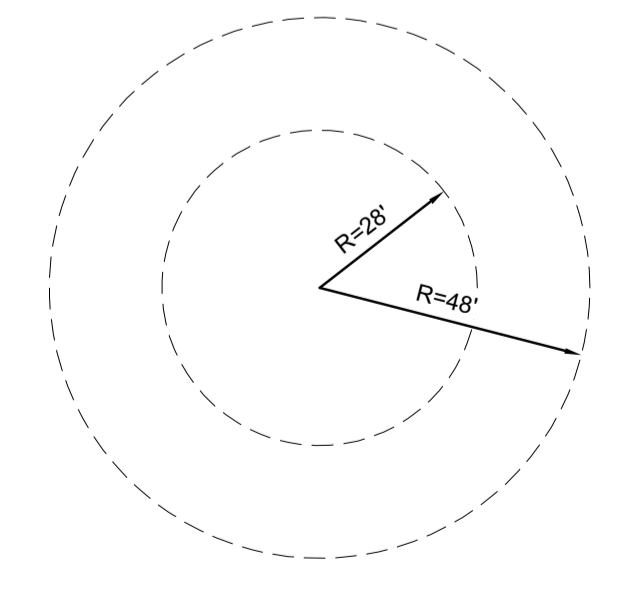
FIRE ACCESS LANE DOES NOT EXCEED 150' PER IFC 503.2.5

FIRE APPARATUS ROADS SHALL HAVE AN UNOBSTRUCTED HEIGHT NOT LESS THAN 13'-6".

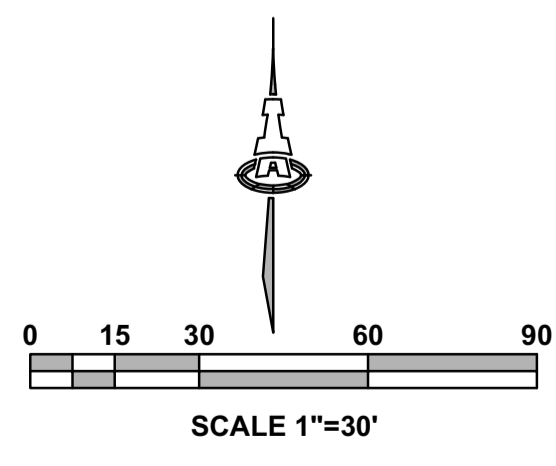
THERE ARE NO OVERHEAD OBSTRUCTIONS ON SITE TO PROHIBIT LADDER TRUCK OPERATIONS



VICINITY MAP



FIRE APPARATUS TURNING RADIUS  
1"=30'



SCALE 1"=30'

**Isaacson & Arfman, Inc.**  
Civil Engineering Consultants  
128 Monroe Street NE  
Albuquerque, NM 87108  
505-266-8828 | www.isaai.com

© 2020 Isaacson & Arfman, Inc.  
This design, calculations, and concepts are owned by and remain the property of Isaacson & Arfman, Inc. and no part thereof shall be utilized by any person, firm or corporation for any purpose whatsoever except with the written permission of Isaacson & Arfman, Inc.

Engineer

**VENTURA PLAZA SELF STORAGE**  
8041 VENTURA ST NE  
FP-22-01013

DESIGN	ISSUE	DATE	Description
DEVELOPMENT	IA 2512		
PROJECT NUMBER:	IA 2512		
FILE:	DEC		
DRAWN BY:	FCA		
CHECKED BY:			
DATE:	07-2022		

SHEET TITLE

**FIRE HYDRANT LOCATION & ACCESS PLAN**

SHEET NUMBER

**FIRE 1**