



**a&m**  
A&M ASSOCIATES, INC.  
2727 N. CENTRAL AVENUE  
PHOENIX, ARIZONA 85004  
P: 602.263.6841

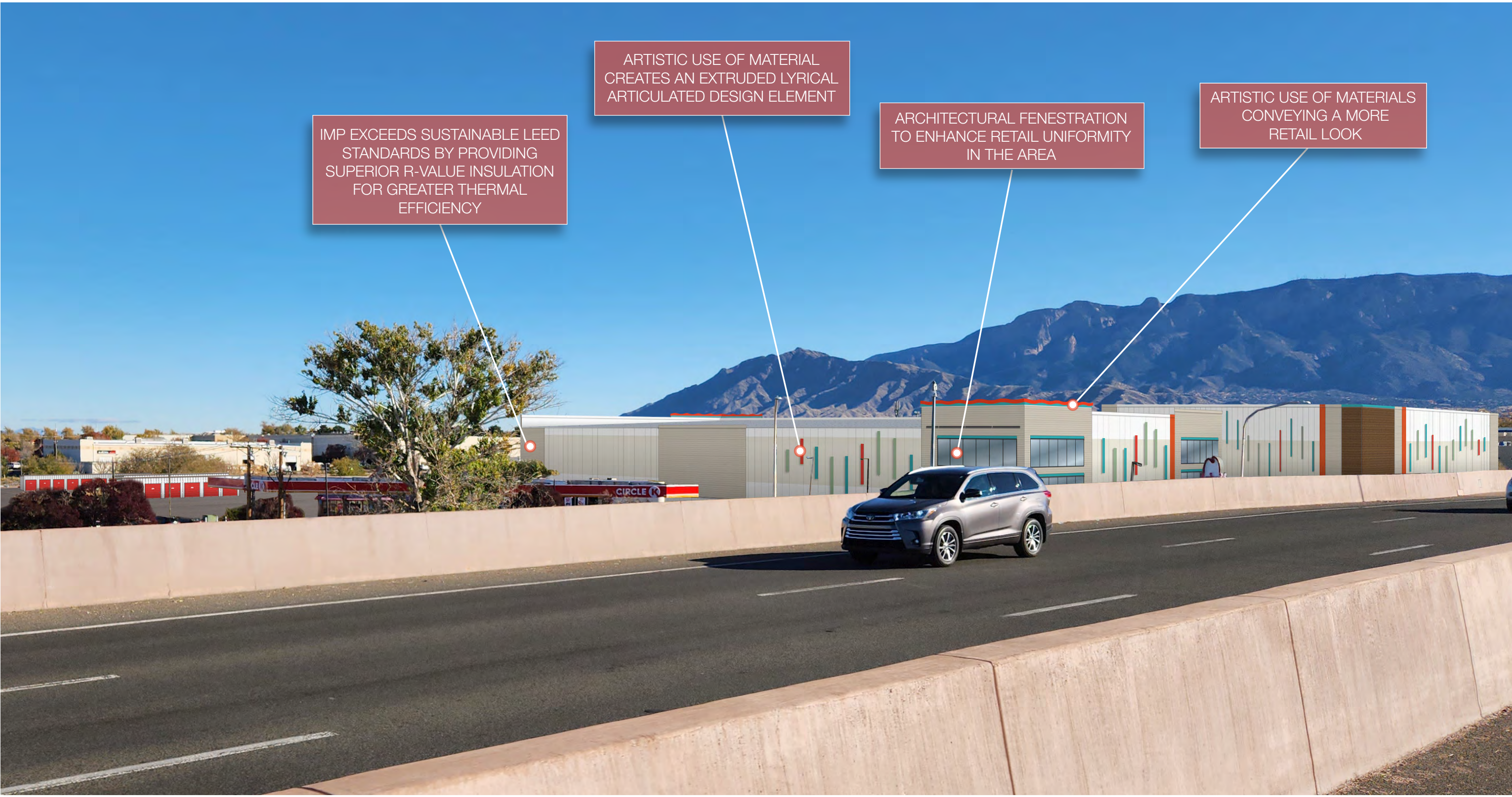
**U-HAUL**  
of Journal Center  
Albuquerque, NM  
(724081)

Preliminary Proposal

**SHEET 01**

©2023 ALL RIGHTS RESERVED 2023-09-22





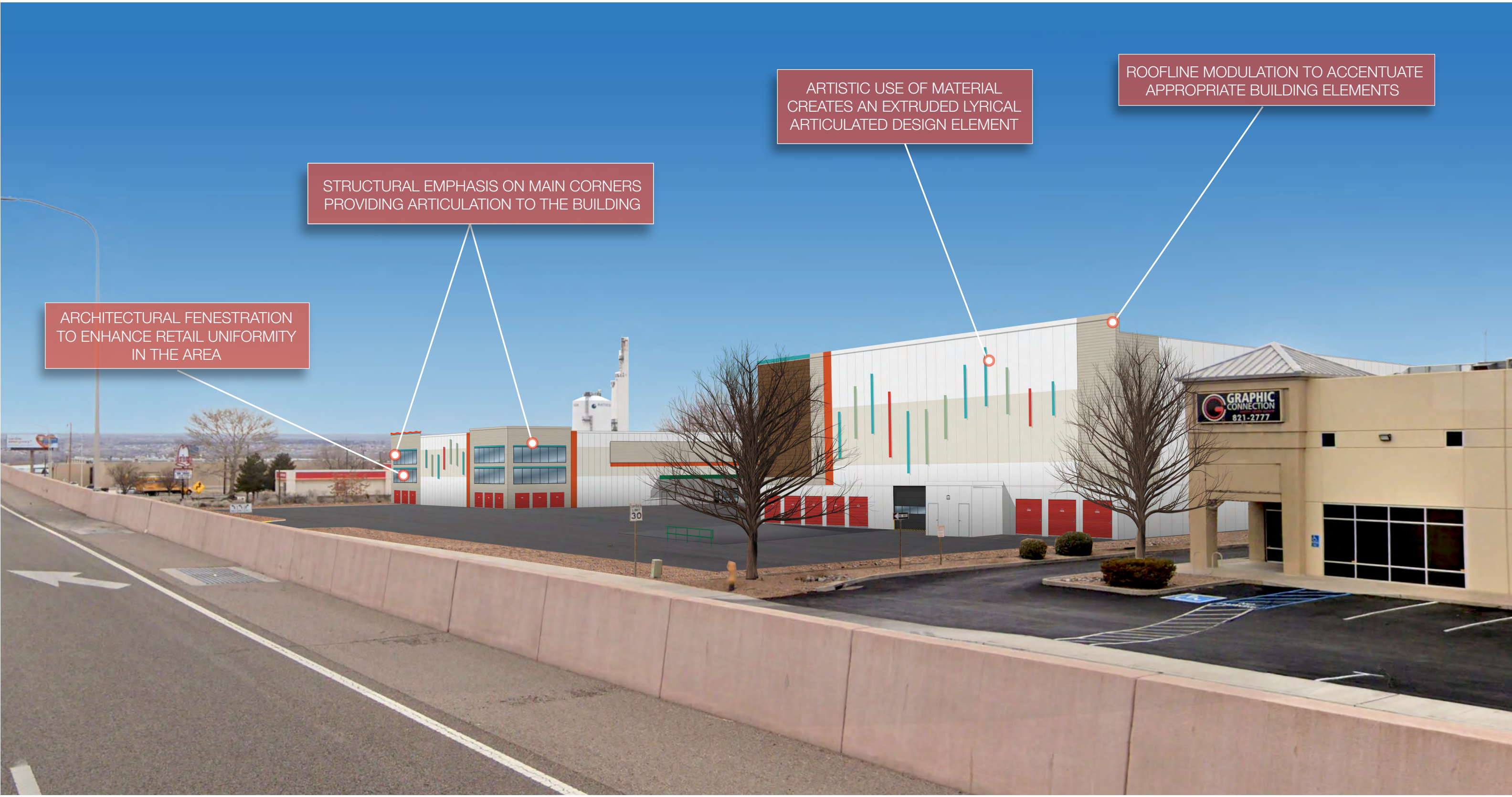
IMP EXCEEDS SUSTAINABLE LEED STANDARDS BY PROVIDING SUPERIOR R-VALUE INSULATION FOR GREATER THERMAL EFFICIENCY

ARTISTIC USE OF MATERIAL CREATES AN EXTRUDED LYRICAL ARTICULATED DESIGN ELEMENT

ARCHITECTURAL FENESTRATION TO ENHANCE RETAIL UNIFORMITY IN THE AREA

ARTISTIC USE OF MATERIALS CONVEYING A MORE RETAIL LOOK





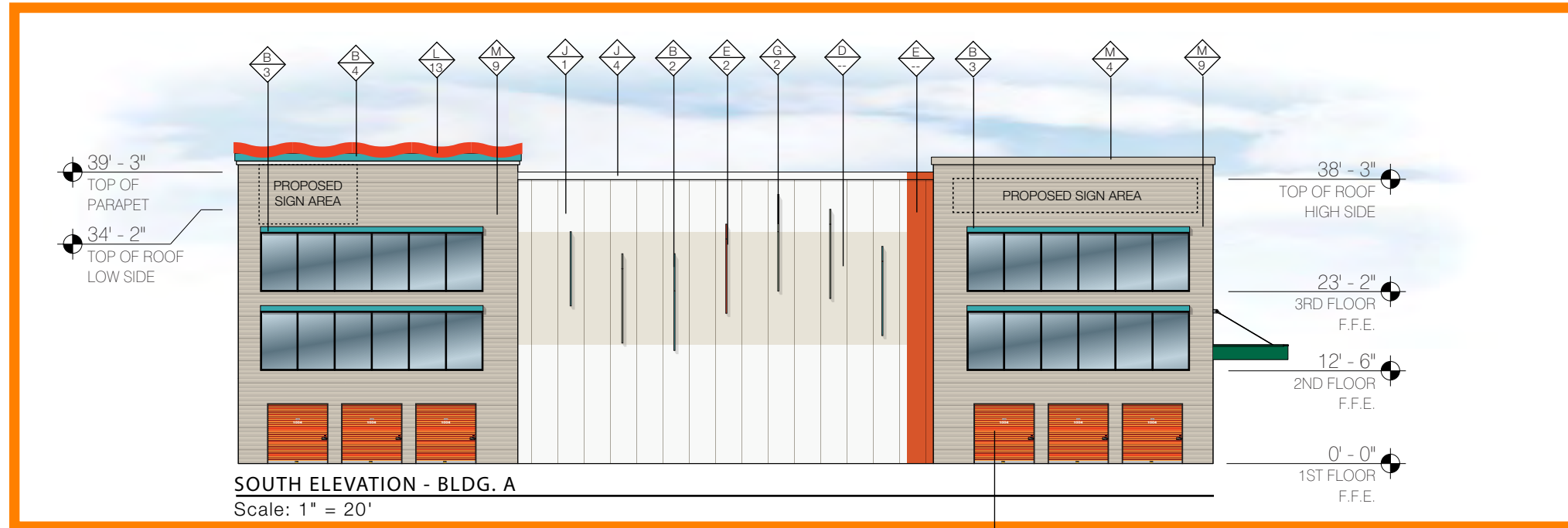
ARCHITECTURAL FENESTRATION TO ENHANCE RETAIL UNIFORMITY IN THE AREA

STRUCTURAL EMPHASIS ON MAIN CORNERS PROVIDING ARTICULATION TO THE BUILDING

ARTISTIC USE OF MATERIAL CREATES AN EXTRUDED LYRICAL ARTICULATED DESIGN ELEMENT

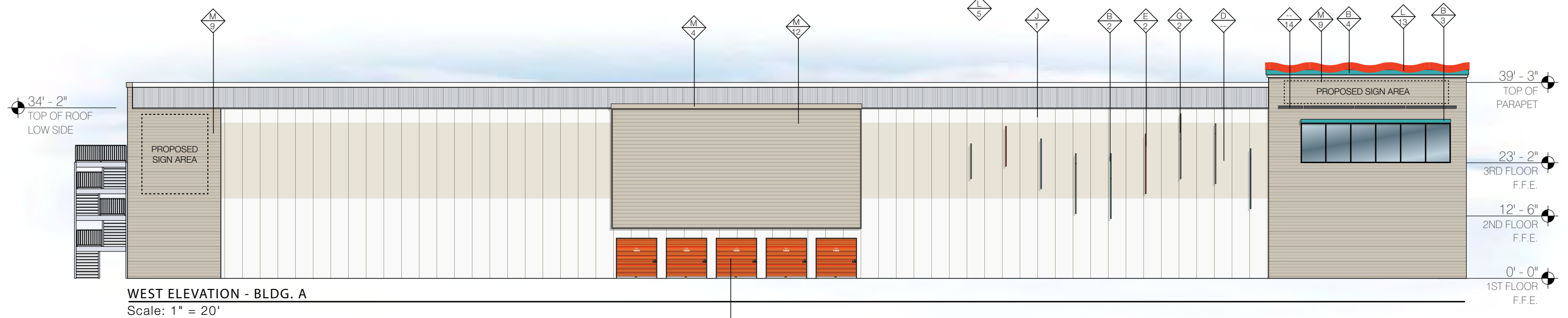
ROOFLINE MODULATION TO ACCENTUATE APPROPRIATE BUILDING ELEMENTS





**SOUTH ELEVATION - BLDG. A**

Scale: 1" = 20'



**WEST ELEVATION - BLDG. A**

Scale: 1" = 20'

COLORS	
A	MBCI U-HAUL GREEN
B	SW 6767 AQUARIUM
C	WALNUT
D	SW 7011 NATURAL CHOICE
E	SW 6884 OBSTINATE ORANGE
F	LIGHT BROOM TILT CONCRETE
G	SW 6451 NURTURE GREEN
H	SW EGGHELL BLACK
I	GALVANIZED TRIM
J	POLAR WHITE
K	U-HAUL PROMO GREEN
L	SIERRA SUNSET
M	SANDSTONE

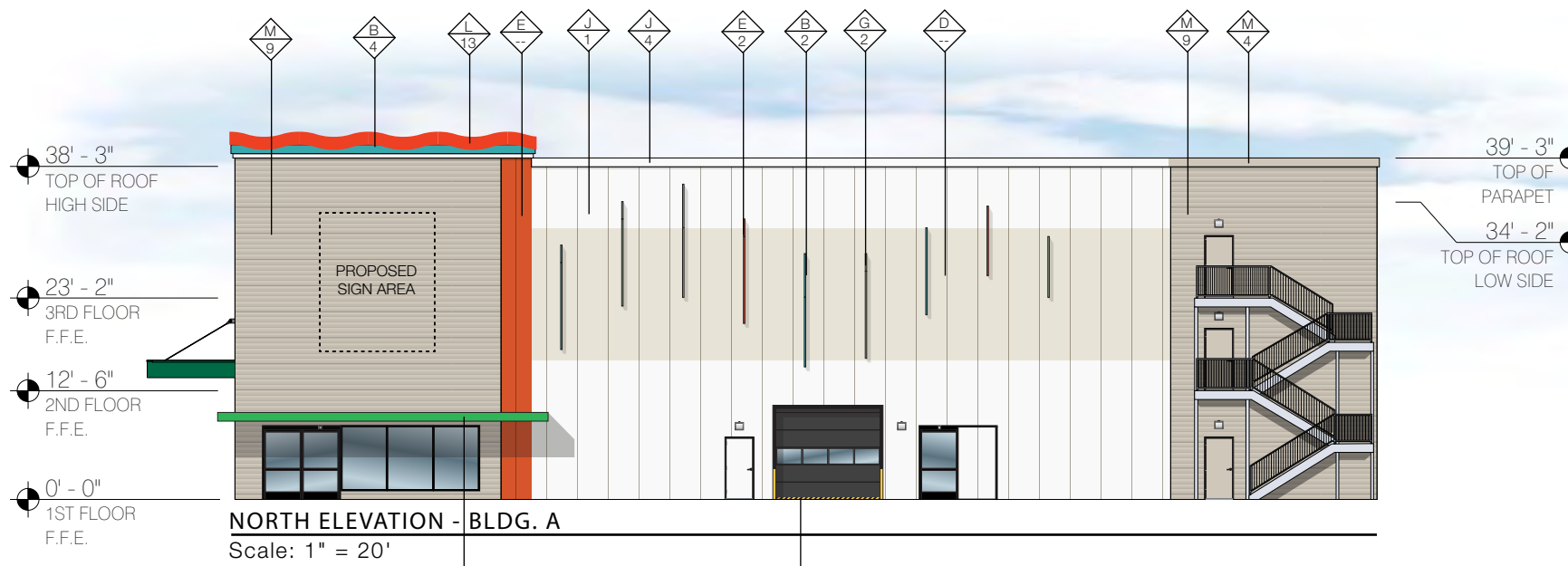
MATERIALS	
1	42"W METL-SPAN SANTA FE STUCCO EMBOSSED VERTICAL IMP
2	9"D LYRICAL ARTICULATED DESIGN ELEMENT
3	9"H x 3"D ARCHITECTURAL DETAILS
4	12"H ROOF TRIMS TYP.
5	ARCHITECTURAL DETAILS
6	2'H x 57'W x 10'D STORAGE: LOAD/UNLOAD AWNING
7	LIGHT BROOM FINISHED CONCRETE TILT-UP WALLS
8	ULTRA-GRAIN CLASSIC WALNUT CARRIAGE DOORS
9	36"W METL-SPAN 7.2 HORIZONTAL IMP
10	2"W GALVANIZED TRIM ON SIDES OF WALNUT PANELS
11	1'H x 38'W x 2'D CUSTOMER ENTRANCE AWNING
12	16"W METL-SPAN CS-620 HORIZONTAL PANELS
13	ARTISTIC USE OF MATERIALS CONVEYING A MORE RETAIL LOOK
14	SCUPPERS
15	HORIZONTAL LAP SIDING

**GENERAL NOTES:**  
 D1 - THE PROPOSED IMP USES FULL-WIDTH PANELS. DO NOT CUT PANELS DUE TO PAINT VARIATIONS. CONSULT WITH UHI CONSTRUCTION DEPT. OR A&M ASSOCIATES BEFORE CUTTING IMP.  
 D2 - THE PROPOSED PROJECT CONSISTS OF 42" WIDE IMP. DEVIATING FROM THIS SIZE PANEL WILL ALTER THE LYRICAL FIN DESIGN. PLEASE CONSULT WITH UHI CONSTRUCTION DEPT. OR A&M ASSOCIATES BEFORE CHANGING THE PLACEMENT AND WIDTH OF THIS PANEL.

**a&m**  
**A&M ASSOCIATES, INC.**  
 2727 N. CENTRAL AVENUE  
 PHOENIX, ARIZONA 85004  
 P: 602.263.6841

**U-HAUL**  
 of Journal Center  
 Albuquerque, NM  
 (724081)

**Colors & Materials**  
**SHEET 04**



COLORS	
A	MBCI U-HAUL GREEN
B	SW 6767 AQUARIUM
C	WALNUT
D	SW 7011 NATURAL CHOICE
E	SW 6884 OBSTINATE ORANGE
F	LIGHT BROOM TILT CONCRETE
G	SW 6451 NURTURE GREEN
H	SW EGGHELL BLACK
I	GALVANIZED TRIM
J	POLAR WHITE
K	U-HAUL PROMO GREEN
L	SIERRA SUNSET
M	SANDSTONE

MATERIALS	
1	42"W METL-SPAN SANTA FE STUCCO EMBOSSED VERTICAL IMP
2	9"D LYRICAL ARTICULATED DESIGN ELEMENT
3	9"H x 3"D ARCHITECTURAL DETAILS
4	12"H ROOF TRIMS TYP.
5	ARCHITECTURAL DETAILS
6	2'H x 57'W x 10'D STORAGE: LOAD/UNLOAD AWNING
7	LIGHT BROOM FINISHED CONCRETE TILT-UP WALLS
8	ULTRA-GRAIN CLASSIC WALNUT CARRIAGE DOORS
9	36"W METL-SPAN 7.2 HORIZONTAL IMP
10	2"W GALVANIZED TRIM ON SIDES OF WALNUT PANELS
11	1'H x 38'W x 2'D CUSTOMER ENTRANCE AWNING
12	16"W METL-SPAN CS-620 HORIZONTAL PANELS
13	ARTISTIC USE OF MATERIALS CONVEYING A MORE RETAIL LOOK
14	SCUPPERS
15	HORIZONTAL LAP SIDING

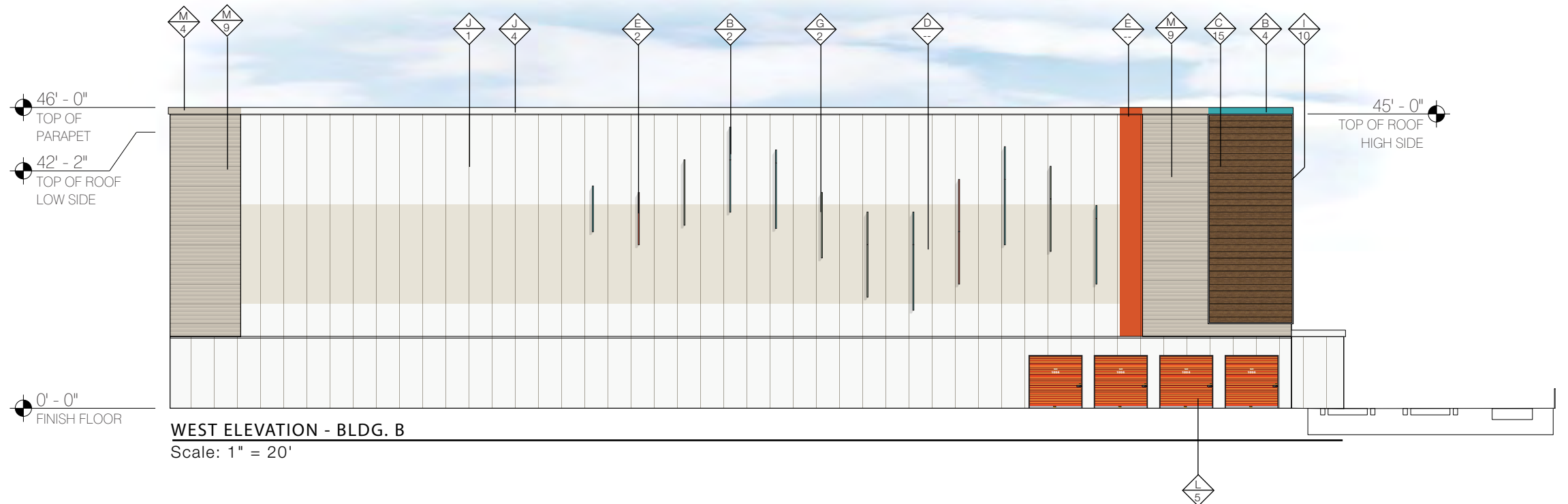
**GENERAL NOTES:**  
 D1 - THE PROPOSED IMP USES FULL-WIDTH PANELS. DO NOT CUT PANELS DUE TO PAINT VARIATIONS. CONSULT WITH UHI CONSTRUCTION DEPT. OR A&M ASSOCIATES BEFORE CUTTING IMP.  
 D2 - THE PROPOSED PROJECT CONSISTS OF 42" WIDE IMP. DEVIATING FROM THIS SIZE PANEL WILL ALTER THE LYRICAL FIN DESIGN. PLEASE CONSULT WITH UHI CONSTRUCTION DEPT. OR A&M ASSOCIATES BEFORE CHANGING THE PLACEMENT AND WIDTH OF THIS PANEL.

**a&m**  
**A&M ASSOCIATES, INC.**  
 2727 N. CENTRAL AVENUE  
 PHOENIX, ARIZONA 85004  
 P: 602.263.6841

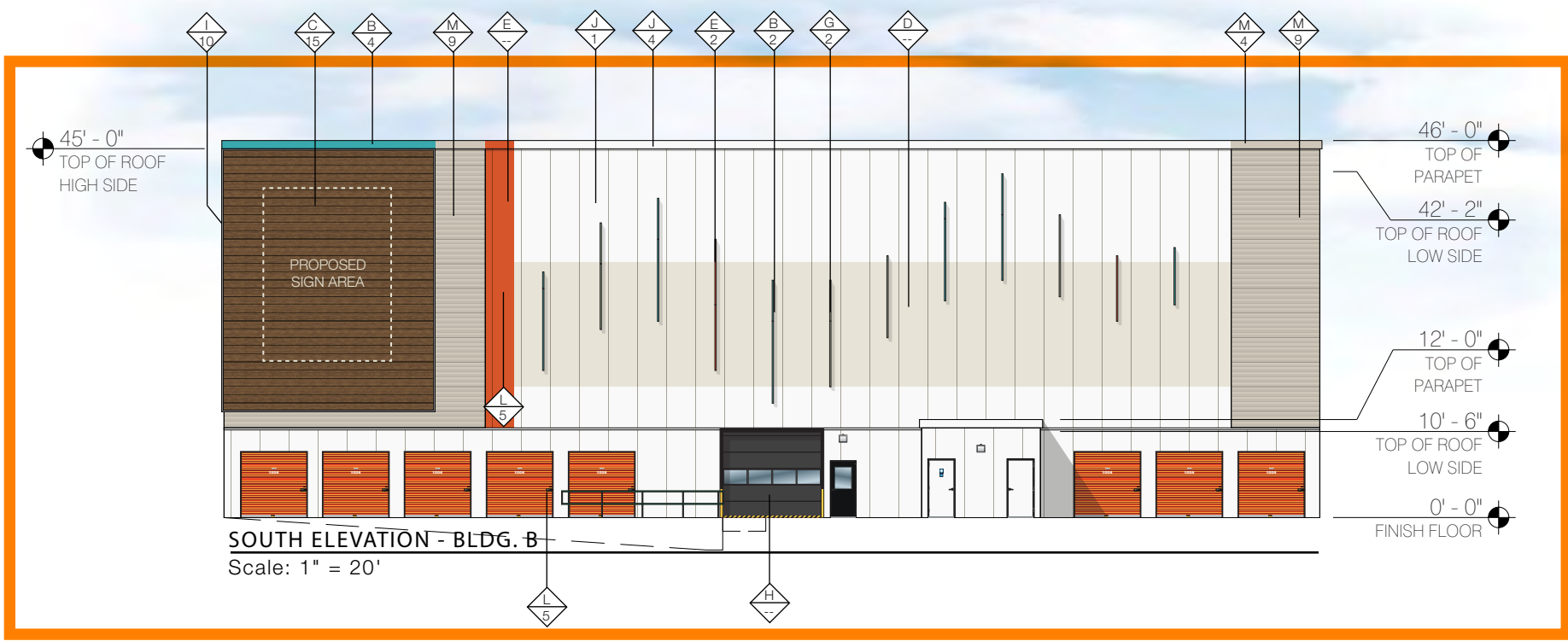
**U-HAUL**  
 of Journal Center  
 Albuquerque, NM  
 (724081)

Colors & Materials

**SHEET 05**



**WEST ELEVATION - BLDG. B**  
Scale: 1" = 20'



**SOUTH ELEVATION - BLDG. B**  
Scale: 1" = 20'

**GENERAL NOTES:**  
 D1 - THE PROPOSED IMP USES FULL-WIDTH PANELS. DO NOT CUT PANELS DUE TO PAINT VARIATIONS. CONSULT WITH UHI CONSTRUCTION DEPT. OR A&M ASSOCIATES BEFORE CUTTING IMP.  
 D2 - THE PROPOSED PROJECT CONSISTS OF 42" WIDE IMP. DEVIATING FROM THIS SIZE PANEL WILL ALTER THE LYRICAL FIN DESIGN. PLEASE CONSULT WITH UHI CONSTRUCTION DEPT. OR A&M ASSOCIATES BEFORE CHANGING THE PLACEMENT AND WIDTH OF THIS PANEL.

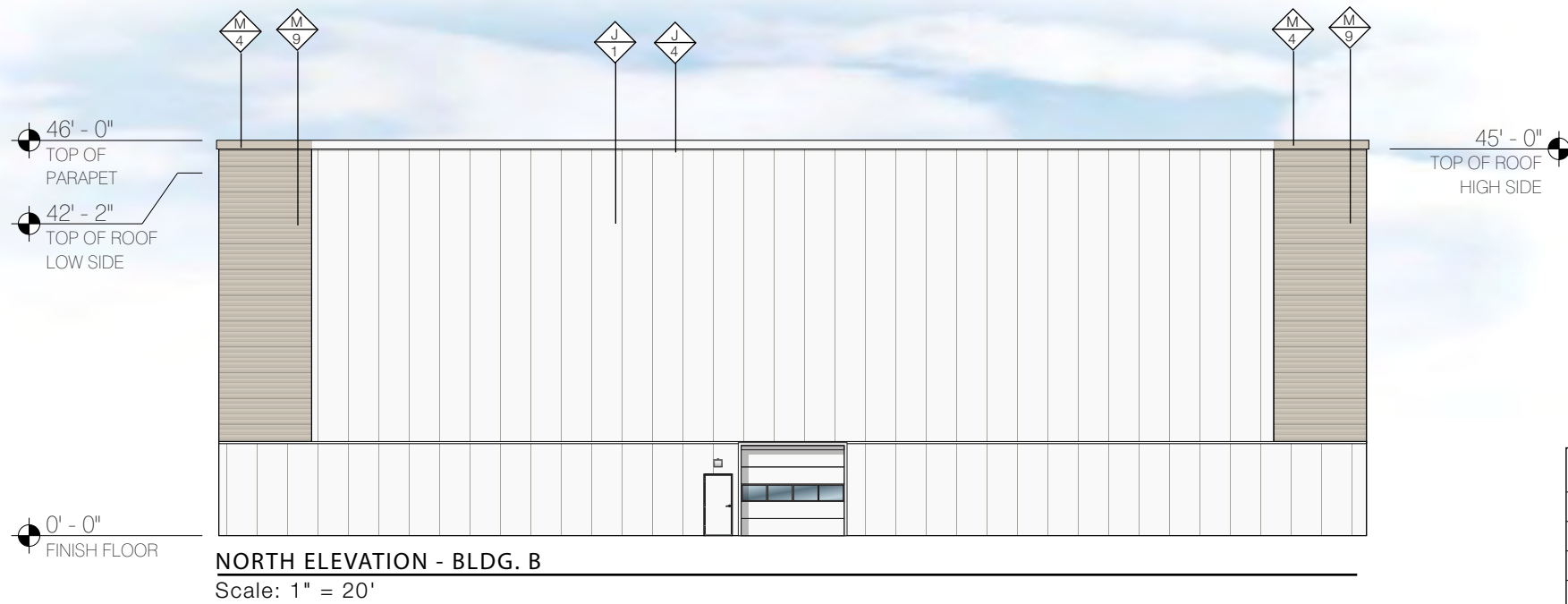
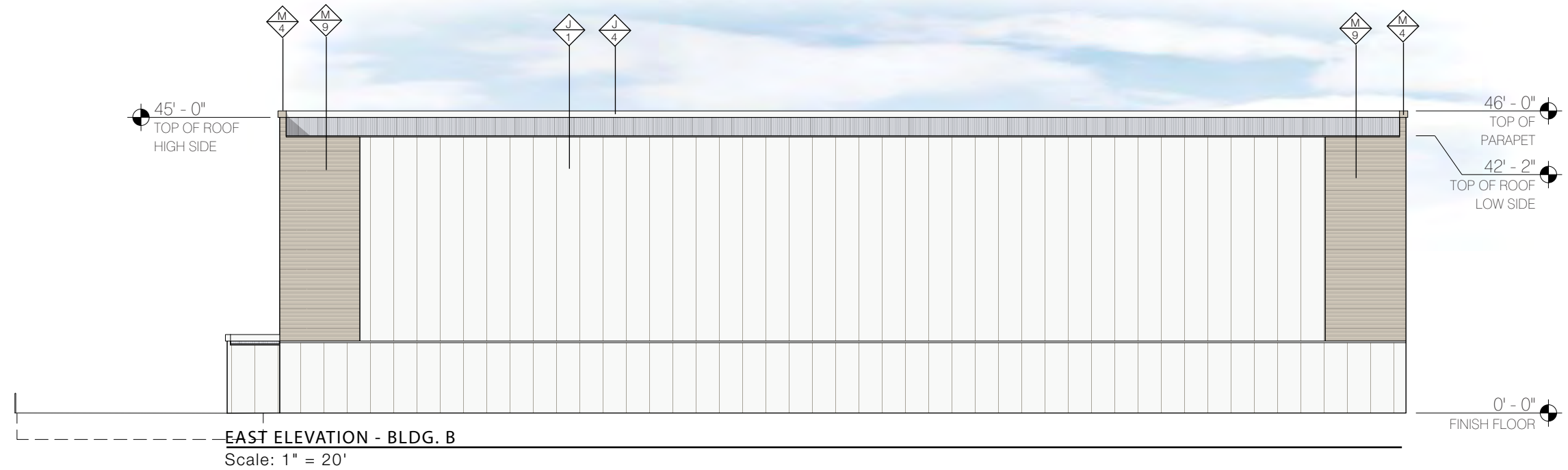
COLORS	
A	MBCI U-HAUL GREEN
B	SW 6767 AQUARIUM
C	WALNUT
D	SW 7011 NATURAL CHOICE
E	SW 6884 OBSTINATE ORANGE
F	LIGHT BROOM TILT CONCRETE
G	SW 6451 NURTURE GREEN
H	SW EGGHELL BLACK
I	GALVANIZED TRIM
J	POLAR WHITE
K	U-HAUL PROMO GREEN
L	SIERRA SUNSET
M	SANDSTONE

MATERIALS	
1	42"W METL-SPAN SANTA FE STUCCO EMBOSSED VERTICAL IMP
2	9"D LYRICAL ARTICULATED DESIGN ELEMENT
3	9"H x 3"D ARCHITECTURAL DETAILS
4	12"H ROOF TRIMS TYP.
5	ARCHITECTURAL DETAILS
6	2'H x 57'W x 10'D STORAGE: LOAD/UNLOAD AWNING
7	LIGHT BROOM FINISHED CONCRETE TILT-UP WALLS
8	ULTRA-GRAIN CLASSIC WALNUT CARRIAGE DOORS
9	36"W METL-SPAN 7.2 HORIZONTAL IMP
10	2"W GALVANIZED TRIM ON SIDES OF WALNUT PANELS
11	1'H x 38'W x 2'D CUSTOMER ENTRANCE AWNING
12	16"W METL-SPAN CS-620 HORIZONTAL PANELS
13	ARTISTIC USE OF MATERIALS CONVEYING A MORE RETAIL LOOK
14	SCUPPERS
15	HORIZONTAL LAP SIDING

**a&m**  
**A&M ASSOCIATES, INC.**  
 2727 N. CENTRAL AVENUE  
 PHOENIX, ARIZONA 85004  
 P: 602.263.6841

**U-HAUL**  
 of Journal Center  
 Albuquerque, NM  
 (724081)

**Colors & Materials**  
**SHEET 06**



COLORS	
A	MBCI U-HAUL GREEN
B	SW 6767 AQUARIUM
C	WALNUT
D	SW 7011 NATURAL CHOICE
E	SW 6884 OBSTINATE ORANGE
F	LIGHT BROOM TILT CONCRETE
G	SW 6451 NURTURE GREEN
H	SW EGGSHHELL BLACK
I	GALVANIZED TRIM
J	POLAR WHITE
K	U-HAUL PROMO GREEN
L	SIERRA SUNSET
M	SANDSTONE

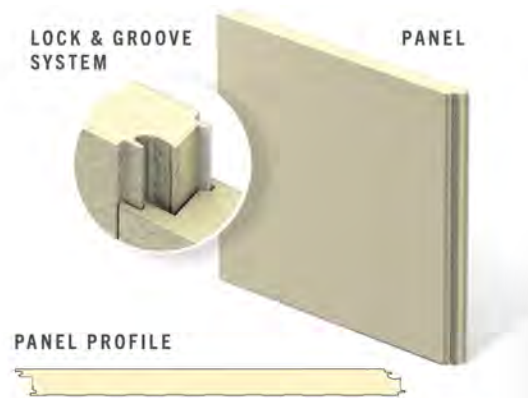
MATERIALS	
1	42"W METL-SPAN SANTA FE STUCCO EMBOSSED VERTICAL IMP
2	9"D LYRICAL ARTICULATED DESIGN ELEMENT
3	9"H x 3"D ARCHITECTURAL DETAILS
4	12"H ROOF TRIMS TYP.
5	ARCHITECTURAL DETAILS
6	2'H x 57'W x 10'D STORAGE: LOAD/UNLOAD AWNING
7	LIGHT BROOM FINISHED CONCRETE TILT-UP WALLS
8	ULTRA-GRAIN CLASSIC WALNUT CARRIAGE DOORS
9	36"W METL-SPAN 7.2 HORIZONTAL IMP
10	2"W GALVANIZED TRIM ON SIDES OF WALNUT PANELS
11	1'H x 38'W x 2'D CUSTOMER ENTRANCE AWNING
12	16"W METL-SPAN CS-620 HORIZONTAL PANELS
13	ARTISTIC USE OF MATERIALS CONVEYING A MORE RETAIL LOOK
14	SCUPPERS
15	HORIZONTAL LAP SIDING

**GENERAL NOTES:**  
 D1 - THE PROPOSED IMP USES FULL-WIDTH PANELS. DO NOT CUT PANELS DUE TO PAINT VARIATIONS. CONSULT WITH UHI CONSTRUCTION DEPT. OR A&M ASSOCIATES BEFORE CUTTING IMP.  
 D2 - THE PROPOSED PROJECT CONSISTS OF 42" WIDE IMP. DEVIATING FROM THIS SIZE PANEL WILL ALTER THE LYRICAL FIN DESIGN. PLEASE CONSULT WITH UHI CONSTRUCTION DEPT. OR A&M ASSOCIATES BEFORE CHANGING THE PLACEMENT AND WIDTH OF THIS PANEL.



# Metl-Span Santa Fe (or Equivalent IMP)

The Metl-Span CF Santa Fe panel has a flat exterior profile with a heavy, embossed stucco texture that mimics the look of a masonry stucco finish but with the added value of an insulated metal panel. The profile is flush with the warmth of an old-world finish, providing a visually pleasing building.



## PRODUCT SPECIFICATIONS

**WIDTH** • 24", 30", 36", 42"

**THICKNESS** • 2", 2½", 2¾", 3", 4"

**LENGTH** • 8'-0" to 32'-0" Horizontal  
8'-0" to 40'-0" Vertical

**EXTERIOR PROFILE** • Flat profile with heavy embossing resembling desert southwestern appearance

**EXTERIOR FACE** • G-90 galvanized or AZ-50 aluminum-zinc coated steel in 24 and 22 Ga.

**INTERIOR PROFILE** • Light Mesa, nominal ⅛" deep, embossed or unembossed

**INTERIOR FACE** • G-90 galvanized or AZ-50 aluminum-zinc coated in 26, 24 and 22 Ga.

**CORE** • Foamed-in-place, PUR Foam Core, zero ozone depleting (zero ODP) Class 1 foam

**JOINT** • Offset double tongue-and-groove with extended metal shelf for positive face fastening

**REVEAL** • Up to 1" reveal options in ¼", ½", ¾" and 1" increments

### U-FACTORS AND R-VALUES\*\*

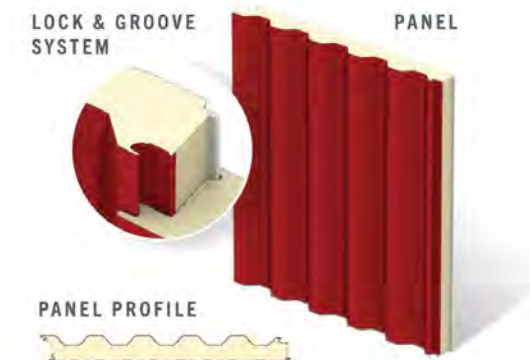
U-FACTOR (BTU/h-ft <sup>2</sup> ·F)		R-VALUE (h-ft <sup>2</sup> ·F/BTU)	
PANEL WIDTH: 42"		PANEL WIDTH: 42"	
2"	0.059	2"	17.5
2.5"	0.046	2.5"	21.9
3"	0.038	3"	26.2
4"	0.028	4"	35.0

\*Available only from Nevada plant.  
\*\*Based on ASTM C518, ASTM C1363 and thermal modeling



# Metl-Span CF 7.2 (or Equivalent IMP)

The CF 7.2 Insul-Rib insulated metal panel combines a traditional 7.2 rib panel with an insulated core. With a bold, ribbed pattern, this panel creates a unique building profile that stands out, ideal for any commercial or industrial application. The 7.2 Insul-Rib panel can be installed both vertically and horizontally, allowing architects flexibility with design.



## PRODUCT SPECIFICATIONS

**WIDTH** • Nominal 36"

**THICKNESS** • 3", 4" Rib height included in thickness

**LENGTH** • NON-DIRECTIONAL EMBOSSED  
8'-0" to 32'-0" Horizontal  
8'-0" to 40'-0" Vertical  
  
• UNEMBOSSED  
8'-0" to 32'-0" Horizontal  
8'-0" to 40'-0" Vertical

**EXTERIOR PROFILE** • 7.2" on center rib pattern, 1 ½" tall, embossed or unembossed

**EXTERIOR FACE** • G-90 galvanized or AZ-50 aluminum-zinc coated steel in 26, 24 and \*\*22 Ga.

**INTERIOR PROFILE** • Mesa, nominal ⅛" deep, embossed or unembossed

**INTERIOR FACE** • G-90 galvanized or AZ-50 aluminum-zinc coated steel in 26, 24 and 22 Ga.

**CORE** • Foamed-in-place, PUR Foam Core, zero ozone depleting (zero ODP) Class 1 foam

**JOINT** • Offset double tongue-and-groove with extended metal shelf for positive face fastening<sup>Δ</sup>

### U-FACTORS AND R-VALUES\*

U-FACTOR (BTU/h-ft <sup>2</sup> ·F)		R-VALUE (h-ft <sup>2</sup> ·F/BTU)	
PANEL WIDTH: 36"		PANEL WIDTH: 36"	
	35°		35°
3"	0.066	3"	15.2
4"	0.043	4"	23.3

\*Based on ASTM C1363 and thermal modeling.  
\*\*not available in unembossed  
Δ Through fastening required at panels ends



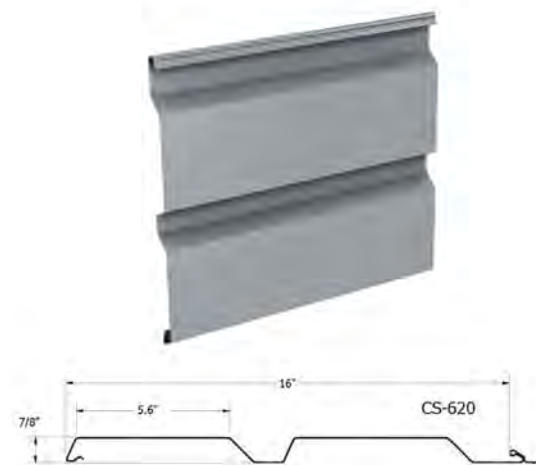


## CS-620 Panel (or Equivalent Panel)

Concept Series single-skin wall panels feature concealed fasteners and a common-lock joint that allows the panels to be integrated with each other. CS-620 interchangeable single-skin metal panels have 16" wide coverage along with 7/8" deep profiled panels featuring two asymmetrical ribs.

Concealed fastener metal siding systems may vary from an uninsulated screen wall to a lock joint metal wall system utilizing BW Systems, an insulated composite backup panel system. This wall panel system has two attachment clip options.

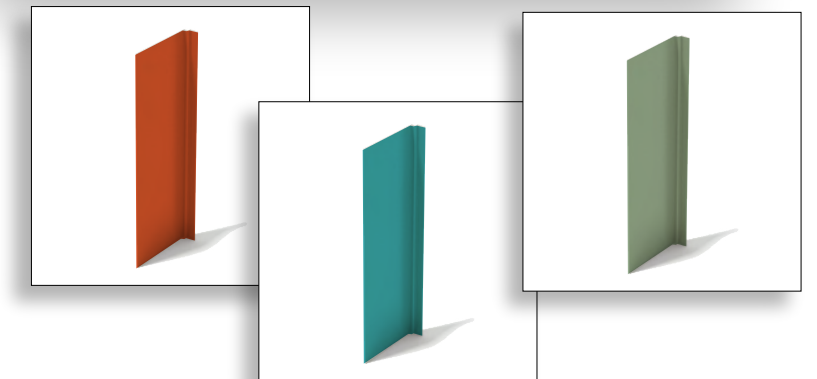
All Concept Series wall panels can be installed in a variety of horizontal or vertical rainscreen applications to form a complete wall system.



16" w panel - CS-620



## 9"D Lyrical Articulated Design Element



Horizontal Lap Siding  
Embossed Walnut  
EXAMPLE



Light Broom Finished  
TILT-UP CONCRETE WALL  
EXAMPLE



Stucco  
Embossed IMP  
EXAMPLE



2727 N. CENTRAL AVENUE  
PHOENIX, ARIZONA 85004  
P: 602.263.6841



Materials

SHEET 09