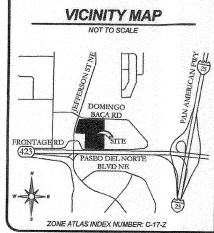


Doc# 2024022855
02/28/2025 09:52:28 AM 1.47 2.4 820.00
Bernalillo County

PLAT OF HARLEY TRACT WITHIN LOOP INDUSTRIAL DISTRICT, UNIT NO. 1, A REPLAT OF HARLEY TRACT FOR U-HAUL LOCATED IN: SECTION 14, TOWNSHIP 11 NORTH, RANGE 3 EAST, ELENA GALLEGOS GRANT CITY OF ALBUQUERQUE, BERNALILLO COUNTY, NEW MEXICO 87107 OCTOBER, 2025



RECORD DESCRIPTION

SPECIAL WARRANTY DEED 0300723 DL THAT CERTAIN TRACT OF LAND SITUATE IN THE SOUTHEAST QUARTER OF SECTION 14, TOWNSHIP 11 NORTH, RANGE 3 EAST, NEW MEXICO PRINCIPAL MERIDIAN, WITHIN THE ELENA GALLEGOS GRANT, BERNALILLO COUNTY, NEW MEXICO, BEING IDENTIFIED AS HARLEY TRACT WITHIN LOOP INDUSTRIAL DISTRICT, UNIT NO. 1, AND BEING MORE PARTICULARLY DESCRIBED BY METES AND BOUNDS SURVEY AS FOLLOWS:
BEGINNING AT THE SOUTHWEST CORNER OF THE TRACT OF LAND HERIN DESCRIBED, A POINT ON THE NORTHERLY RIGHT-OF-WAY LINE OF LOS ANGELES BLVD. NE, HAVING THE QUARTER CORNER COMMON TO SECTIONS 14 AND 23, TOWNSHIP 11 NORTH, RANGE 3 EAST, AL.M.A.N., BEARING S 88°20'00" W, 488.85 FEET DISTANCE; THENCE N 0°17'00" E, 303.00 FEET DISTANCE TO A POINT ON A CURVE ON THE EASTWLY RIGHT-OF-WAY LINE OF JEFFERSON STREET NE; THENCE ALONG SAID EASTWLY RIGHT-OF-WAY LINE OF JEFFERSON STREET NE, ALONG THE ARC OF A CURVE BEARING TO THE RIGHT, BEING ARC HAVING A RADIUS OF 29.39 FEET AND CHORD WHICH BEARS 10.34 FEET DISTANCE TO A POINT OF TANGENCY; THENCE N 17°02'25" E, 117.90 FEET DISTANCE TO A POINT ON THE SOUTHERLY RIGHT-OF-WAY LINE OF A DRAINAGE CHANNEL (AMAPCA) AND THE NORTHWEST CORNER OF THE TRACT OF LAND HERIN DESCRIBED;
THENCE S 89°00'00" E, 63.69 FEET DISTANCE ALONG THE SOUTHERLY RIGHT-OF-WAY LINE OF A DRAINAGE CHANNEL (AMAPCA) TO THE NORTHEAST CORNER OF THE TRACT OF LAND HERIN DESCRIBED;
THENCE S 00°17'00" E, 73.00 FEET DISTANCE TO A POINT ON THE NORTHERLY RIGHT-OF-WAY LINE OF LOS ANGELES BLVD. NE AND THE SOUTHWEST CORNER OF THE TRACT OF LAND HERIN DESCRIBED;
THENCE N 89°00'00" W, 473.64 FEET DISTANCE ALONG THE NORTHERLY RIGHT-OF-WAY LINE OF LOS ANGELES BLVD. NE TO THE PLACE OF BEGINNING.

SURVEY DESCRIPTION

A PORTION OF LAND LOCATED IN THE SOUTHWEST QUARTER OF SECTION 14, TOWNSHIP 11 NORTH, RANGE 3 EAST, NEW MEXICO PRINCIPAL MERIDIAN, WITHIN THE ELENA GALLEGOS GRANT, BERNALILLO COUNTY, NEW MEXICO, BEING IDENTIFIED AS HARLEY TRACT WITHIN LOOP INDUSTRIAL DISTRICT, UNIT NO. 1, AND BEING MORE PARTICULARLY DESCRIBED BY METES AND BOUNDS SURVEY AS FOLLOWS:
BEGINNING AT THE QUARTER CORNER COMMON TO SECTIONS 14 AND 23, THENCE NORTH 89°19'59" EAST 488.85 FEET TO THE CENTERLINE OF PASADO DEL NORTE BOULEVARD NORTHEAST; THENCE LEAVING SAID CENTERLINE NORTH 00°20'00" EAST 51.77 FEET TO THE TRUE POINT OF BEGINNING; THENCE NORTH 89°37'12" WEST 238.79 FEET; THENCE ALONG THE ARC BEARING CAPLED 9889° THENCE NORTH 89°37'12" WEST 238.79 FEET; THENCE ALONG THE ARC OF A CURVE TO THE RIGHT WITH A RADIUS OF 88.40 FEET WITH A CHORD BEARING AND DISTANCE OF NORTH 12°02'10" EAST 124.11 FEET; THENCE NORTH 17°02'25" EAST 124.11 FEET; THENCE SOUTH 89°00'00" WEST 177.90 FEET; THENCE SOUTH 00°17'00" WEST 636.83 FEET; THENCE NORTH 89°35'55" WEST 473.64 FEET TO THE POINT OF BEGINNING, CONTAINING 4.881 ACRES, MORE OR LESS, SUBJECT TO EASEMENTS AND RIGHT-OF-WAYS OF RECORD.

MISCELLANEOUS NOTES

COMPLETED FIELD WORK: JULY 2, 2025
REFERENCE DOCUMENTS: SPECIAL WARRANTY DEED FILED IN DEED 0300723 DL
BASIS OF BEARING: THE BASIS OF BEARING OF THIS SURVEY IS GRID NORTH, BASED ON NEW MEXICO STATE PLANE COORDINATE SYSTEM (CENTRAL ZONE 10403)
SOME FEATURES SHOWN ON THIS PLAT MAY BE SHOWN OUT OF SCALE FOR CLARITY.
DIMENSIONS ON THIS PLAT ARE EXPRESSED IN FEET AND DECIMAL FRACTIONS THEREOF UNLESS OTHERWISE NOTED. MONUMENTS WERE FOUND AT POINTS WHERE INDICATED.
EXCEPT AS SPECIFICALLY STATED OR SHOWN ON THIS PLAT, THIS SURVEY DOES NOT PURPORT TO REFLECT OR ANY OF THE FOLLOWING WHICH MAY BE APPLICABLE TO THE SUBJECT PROPERTY: EASEMENTS, OTHER THAN POSSIBLE EASEMENTS WHICH WERE VISIBLE AT THE TIME OF SURVEY; RESTRICTIVE COVENANTS; SUBDIVISION RESTRICTIONS OR OTHER LAND USE REGULATIONS; AND ANY OTHER FACTS WHICH AN ACCURATE TITLE SEARCH MAY DISCLOSE.
THE TERM "CERTIFY" OR "CERTIFICATION" AND "CORRECT" AS NOTED HEREIN AND AS IF PERTAINS TO LAND SURVEYING SERVICES AS SHOWN ON THIS DOCUMENT SHALL MEAN "A STATEMENT ISSUED BY THE PROFESSIONAL LAND SURVEYOR AT THE TIME OF THE SURVEY AND IS NOT A WARRANTY OR WARRANTY, EITHER IMPLIED OR EXPRESSED."
PURSUANT TO SECTION 14-1-4.7 OF THE CITY OF ALBUQUERQUE CODE OR ORDINANCES, NO PROPERTY WITHIN THE AREA OF THIS PLAT SHALL AT ANY TIME BE SUBJECT TO A DEED RESTRICTION COVENANT, OR BOUNDARY AGREEMENT PROMISSING SOLAR COLLECTORS FROM BEING INSTALLED ON BUILDINGS OR ERECTED ON THE LOTS OF PARCELS WITHIN THE AREA OF PROPOSED PLAT. THE FOREGOING RESTRICTIONS SHALL BE A CONDITION TO APPROVAL OF THIS PLAT.

JURISDICTIONAL AFFIDAVIT:
I, WILLIAM G. GAGNER, A REGISTERED PROFESSIONAL NEW MEXICO SURVEYOR, HEREBY AFFIRM THAT THE PROPERTY DESCRIBED DOES LIE WITHIN THE PLATTING AND JURISDICTION JURISDICTION OF THE CITY OF ALBUQUERQUE.

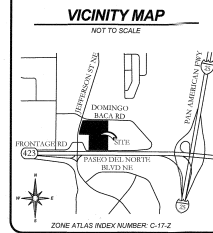
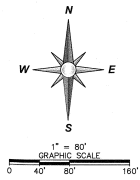
UTILITY APPROVALS:	DATE
CITY ENGINEER	11/17/2025
WATER SERVICES	10/29/2025
NEW MEXICO GAS COMPANY	
Thomas McClintin	12/1/2025
SEWER/LIDAR	
Mike Martinez	11/18/2025
COMCAST	
CITY APPROVALS:	
CITY ENGINEER for Loren Risenhoover	10/16/2025
CITY ENGINEER	
N/A	
HEALTH DEPARTMENT (CONDITIONAL)	
N/A	
ENVIRONMENTAL HEALTH DEPARTMENT (CONDITIONAL)	
Conrad Dwyer	03/03/2026
TRAFFIC ENGINEER, TRANSPORTATION DIVISION	
John G. Galt	03/13/2026
INSURANCE	
Mike Del	03/03/2026
PARKS AND RECREATION DEPARTMENT	
Kara Radwin	12/23/2025
AMAPCA	
Cheryl Chaves	03/05/2026
HYDROLOGY	
John Galt	03/03/2026
CODE ENFORCEMENT	
John Galt	03/03/2026
PLANNING DEPARTMENT	
John Galt	03/13/2026
CITY ENGINEER	
N/A	
AMAPCA (CONDITIONAL)	

I, AS IS TO CERTIFY THIS TAKE AS CORRECT AND HAD ON PLAT 10/17/2025
PROPERTY OWNER OF RECORD
DANIELA ROSA BUSTAMANTE
BERNALILLO COUNTY DEPARTMENT OF PLANNING
COURT REPORTER: 8/2/2025

FLOOD ZONE INFORMATION

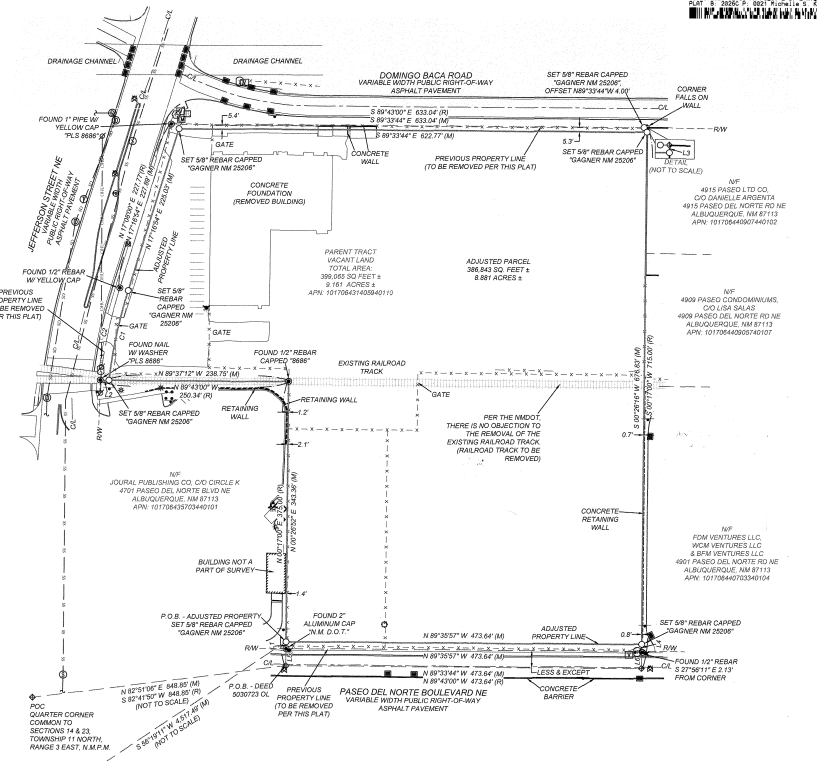
BY GRAPHIC PLOTTING ONLY NO PORTION OF THIS PROPERTY IS IN ZONE "A" OR "C" OR "D" OR "E" OR "F" OR "G" OR "H" OR "I" OR "J" OR "K" OR "L" OR "M" OR "N" OR "O" OR "P" OR "Q" OR "R" OR "S" OR "T" OR "V" OR "X" OR "Y" OR "Z" OR "AA" OR "BB" OR "CC" OR "DD" OR "EE" OR "FF" OR "GG" OR "HH" OR "II" OR "JJ" OR "KK" OR "LL" OR "MM" OR "NN" OR "OO" OR "PP" OR "QQ" OR "RR" OR "SS" OR "TT" OR "VV" OR "XX" OR "YY" OR "ZZ" OR "AAA" OR "BBB" OR "CCC" OR "DDD" OR "EEE" OR "FFF" OR "GGG" OR "HHH" OR "III" OR "JJJ" OR "KKK" OR "LLL" OR "MMM" OR "NNN" OR "OOO" OR "PPP" OR "QQQ" OR "RRR" OR "SSS" OR "TTT" OR "VVV" OR "XXX" OR "YYY" OR "ZZZ" OR "AAAA" OR "BBBB" OR "CCCC" OR "DDDD" OR "EEEE" OR "FFFF" OR "GGGG" OR "HHHH" OR "IIII" OR "JJJJ" OR "KKKK" OR "LLLL" OR "MMMM" OR "NNNN" OR "OOOO" OR "PPPP" OR "QQQQ" OR "RRRR" OR "SSSS" OR "TTTT" OR "VVVV" OR "XXXX" OR "YYYY" OR "ZZZZ" OR "AAAAA" OR "BBBBB" OR "CCCCC" OR "DDDDD" OR "EEEEE" OR "FFFFF" OR "GGGGG" OR "HHHHH" OR "IIIII" OR "JJJJJ" OR "KKKKK" OR "LLLLL" OR "MMMMM" OR "NNNNN" OR "OOOOO" OR "PPPPP" OR "QQQQQ" OR "RRRRR" OR "SSSSS" OR "TTTTT" OR "VVVVV" OR "XXXXX" OR "YYYYY" OR "ZZZZZ" OR "AAAAA" OR "BBBBB" OR "CCCCC" OR "DDDDD" OR "EEEEE" OR "FFFFF" OR "GGGGG" OR "HHHHH" OR "IIIII" OR "JJJJJ" OR "KKKKK" OR "LLLLL" OR "MMMMM" OR "NNNNN" OR "OOOOO" OR "PPPPP" OR "QQQQQ" OR "RRRRR" OR "SSSSS" OR "TTTTT" OR "VVVVV" OR "XXXXX" OR "YYYYY" OR "ZZZZZ" OR "AAAAA" OR "BBBBB" OR "CCCCC" OR "DDDDD" OR "EEEEE" OR "FFFFF" OR "GGGGG" OR "HHHHH" OR "IIIII" OR "JJJJJ" OR "KKKKK" OR "LLLLL" OR "MMMMM" OR "NNNNN" OR "OOOOO" OR "PPPPP" OR "QQQQQ" OR "RRRRR" OR "SSSSS" OR "TTTTT" OR "VVVVV" OR "XXXXX" OR "YYYYY" OR "ZZZZZ" OR "AAAAA" OR "BBBBB" OR "CCCCC" OR "DDDDD" OR "EEEEE" OR "FFFFF" OR "GGGGG" OR "HHHHH" OR "IIIII" OR "JJJJJ" OR "KKKKK" OR "LLLLL" OR "MMMMM" OR "NNNNN" OR "OOOOO" OR "PPPPP" OR "QQQQQ" OR "RRRRR" OR "SSSSS" OR "TTTTT" OR "VVVVV" OR "XXXXX" OR "YYYYY" OR "ZZZZZ" OR "AAAAA" OR "BBBBB" OR "CCCCC" OR "DDDDD" OR "EEEEE" OR "FFFFF" OR "GGGGG" OR "HHHHH" OR "IIIII" OR "JJJJJ" OR "KKKKK" OR "LLLLL" OR "MMMMM" OR "NNNNN" OR "OOOOO" OR "PPPPP" OR "QQQQQ" OR "RRRRR" OR "SSSSS" OR "TTTTT" OR "VVVVV" OR "XXXXX" OR "YYYYY" OR "ZZZZZ" OR "AAAAA" OR "BBBBB" OR "CCCCC" OR "DDDDD" OR "EEEEE" OR "FFFFF" OR "GGGGG" OR "HHHHH" OR "IIIII" OR "JJJJJ" OR "KKKKK" OR "LLLLL" OR "MMMMM" OR "NNNNN" OR "OOOOO" OR "PPPPP" OR "QQQQQ" OR "RRRRR" OR "SSSSS" OR "TTTTT" OR "VVVVV" OR "XXXXX" OR "YYYYY" OR "ZZZZZ" OR "AAAAA" OR "BBBBB" OR "CCCCC" OR "DDDDD" OR "EEEEE" OR "FFFFF" OR "GGGGG" OR "HHHHH" OR "IIIII" OR "JJJJJ" OR "KKKKK" OR "LLLLL" OR "MMMMM" OR "NNNNN" OR "OOOOO" OR "PPPPP" OR "QQQQQ" OR "RRRRR" OR "SSSSS" OR "TTTTT" OR "VVVVV" OR "XXXXX" OR "YYYYY" OR "ZZZZZ" OR "AAAAA" OR "BBBBB" OR "CCCCC" OR "DDDDD" OR "EEEEE" OR "FFFFF" OR "GGGGG" OR "HHHHH" OR "IIIII" OR "JJJJJ" OR "KKKKK" OR "LLLLL" OR "MMMMM" OR "NNNNN" OR "OOOOO" OR "PPPPP" OR "QQQQQ" OR "RRRRR" OR "SSSSS" OR "TTTTT" OR "VVVVV" OR "XXXXX" OR "YYYYY" OR "ZZZZZ" OR "AAAAA" OR "BBBBB" OR "CCCCC" OR "DDDDD" OR "EEEEE" OR "FFFFF" OR "GGGGG" OR "HHHHH" OR "IIIII" OR "JJJJJ" OR "KKKKK" OR "LLLLL" OR "MMMMM" OR "NNNNN" OR "OOOOO" OR "PPPPP" OR "QQQQQ" OR "RRRRR" OR "SSSSS" OR "TTTTT" OR "VVVVV" OR "XXXXX" OR "YYYYY" OR "ZZZZZ" OR "AAAAA" OR "BBBBB" OR "CCCCC" OR "DDDDD" OR "EEEEE" OR "FFFFF" OR "GGGGG" OR "HHHHH" OR "IIIII" OR "JJJJJ" OR "KKKKK" OR "LLLLL" OR "MMMMM" OR "NNNNN" OR "OOOOO" OR "PPPPP" OR "QQQQQ" OR "RRRRR" OR "SSSSS" OR "TTTTT" OR "VVVVV" OR "XXXXX" OR "YYYYY" OR "ZZZZZ" OR "AAAAA" OR "BBBBB" OR "CCCCC" OR "DDDDD" OR "EEEEE" OR "FFFFF" OR "GGGGG" OR "HHHHH" OR "IIIII" OR "JJJJJ" OR "KKKKK" OR "LLLLL" OR "MMMMM" OR "NNNNN" OR "OOOOO" OR "PPPPP" OR "QQQQQ" OR "RRRRR" OR "SSSSS" OR "TTTTT" OR "VVVVV" OR "XXXXX" OR "YYYYY" OR "ZZZZZ" OR "AAAAA" OR "BBBBB" OR "CCCCC" OR "DDDDD" OR "EEEEE" OR "FFFFF" OR "GGGGG" OR "HHHHH" OR "IIIII" OR "JJJJJ" OR "KKKKK" OR "LLLLL" OR "MMMMM" OR "NNNNN" OR "OOOOO" OR "PPPPP" OR "QQQQQ" OR "RRRRR" OR "SSSSS" OR "TTTTT" OR "VVVVV" OR "XXXXX" OR "YYYYY" OR "ZZZZZ" OR "AAAAA" OR "BBBBB" OR "CCCCC" OR "DDDDD" OR "EEEEE" OR "FFFFF" OR "GGGGG" OR "HHHHH" OR "IIIII" OR "JJJJJ" OR "KKKKK" OR "LLLLL" OR "MMMMM" OR "NNNNN" OR "OOOOO" OR "PPPPP" OR "QQQQQ" OR "RRRRR" OR "SSSSS" OR "TTTTT" OR "VVVVV" OR "XXXXX" OR "YYYYY" OR "ZZZZZ" OR "AAAAA" OR "BBBBB" OR "CCCCC" OR "DDDDD" OR "EEEEE" OR "FFFFF" OR "GGGGG" OR "HHHHH" OR "IIIII" OR "JJJJJ" OR "KKKKK" OR "LLLLL" OR "MMMMM" OR "NNNNN" OR "OOOOO" OR "PPPPP" OR "QQQQQ" OR "RRRRR" OR "SSSSS" OR "TTTTT" OR "VVVVV" OR "XXXXX" OR "YYYYY" OR "ZZZZZ" OR "AAAAA" OR "BBBBB" OR "CCCCC" OR "DDDDD" OR "EEEEE" OR "FFFFF" OR "GGGGG" OR "HHHHH" OR "IIIII" OR "JJJJJ" OR "KKKKK" OR "LLLLL" OR "MMMMM" OR "NNNNN" OR "OOOOO" OR "PPPPP" OR "QQQQQ" OR "RRRRR" OR "SSSSS" OR "TTTTT" OR "VVVVV" OR "XXXXX" OR "YYYYY" OR "ZZZZZ" OR "AAAAA" OR "BBBBB" OR "CCCCC" OR "DDDDD" OR "EEEEE" OR "FFFFF" OR "GGGGG" OR "HHHHH" OR "IIIII" OR "JJJJJ" OR "KKKKK" OR "LLLLL" OR "MMMMM" OR "NNNNN" OR "OOOOO" OR "PPPPP" OR "QQQQQ" OR "RRRRR" OR "SSSSS" OR "TTTTT" OR "VVVVV" OR "XXXXX" OR "YYYYY" OR "ZZZZZ" OR "AAAAA" OR "BBBBB" OR "CCCCC" OR "DDDDD" OR "EEEEE" OR "FFFFF" OR "GGGGG" OR "HHHHH" OR "IIIII" OR "JJJJJ" OR "KKKKK" OR "LLLLL" OR "MMMMM" OR "NNNNN" OR "OOOOO" OR "PPPPP" OR "QQQQQ" OR "RRRRR" OR "SSSSS" OR "TTTTT" OR "VVVVV" OR "XXXXX" OR "YYYYY" OR "ZZZZZ" OR "AAAAA" OR "BBBBB" OR "CCCCC" OR "DDDDD" OR "EEEEE" OR "FFFFF" OR "GGGGG" OR "HHHHH" OR "IIIII" OR "JJJJJ" OR "KKKKK" OR "LLLLL" OR "MMMMM" OR "NNNNN" OR "OOOOO" OR "PPPPP" OR "QQQQQ" OR "RRRRR" OR "SSSSS" OR "TTTTT" OR "VVVVV" OR "XXXXX" OR "YYYYY" OR "ZZZZZ" OR "AAAAA" OR "BBBBB" OR "CCCCC" OR "DDDDD" OR "EEEEE" OR "FFFFF" OR "GGGGG" OR "HHHHH" OR "IIIII" OR "JJJJJ" OR "KKKKK" OR "LLLLL" OR "MMMMM" OR "NNNNN" OR "OOOOO" OR "PPPPP" OR "QQQQQ" OR "RRRRR" OR "SSSSS" OR "TTTTT" OR "VVVVV" OR "XXXXX" OR "YYYYY" OR "ZZZZZ" OR "AAAAA" OR "BBBBB" OR "CCCCC" OR "DDDDD" OR "EEEEE" OR "FFFFF" OR "GGGGG" OR "HHHHH" OR "IIIII" OR "JJJJJ" OR "KKKKK" OR "LLLLL" OR "MMMMM" OR "NNNNN" OR "OOOOO" OR "PPPPP" OR "QQQQQ" OR "RRRRR" OR "SSSSS" OR "TTTTT" OR "VVVVV" OR "XXXXX" OR "YYYYY" OR "ZZZZZ" OR "AAAAA" OR "BBBBB" OR "CCCCC" OR "DDDDD" OR "EEEEE" OR "FFFFF" OR "GGGGG" OR "HHHHH" OR "IIIII" OR "JJJJJ" OR "KKKKK" OR "LLLLL" OR "MMMMM" OR "NNNNN" OR "OOOOO" OR "PPPPP" OR "QQQQQ" OR "RRRRR" OR "SSSSS" OR "TTTTT" OR "VVVVV" OR "XXXXX" OR "YYYYY" OR "ZZZZZ" OR "AAAAA" OR "BBBBB" OR "CCCCC" OR "DDDDD" OR "EEEEE" OR "FFFFF" OR "GGGGG" OR "HHHHH" OR "IIIII" OR "JJJJJ" OR "KKKKK" OR "LLLLL" OR "MMMMM" OR "NNNNN" OR "OOOOO" OR "PPPPP" OR "QQQQQ" OR "RRRRR" OR "SSSSS" OR "TTTTT" OR "VVVVV" OR "XXXXX" OR "YYYYY" OR "ZZZZZ" OR "AAAAA" OR "BBBBB" OR "CCCCC" OR "DDDDD" OR "EEEEE" OR "FFFFF" OR "GGGGG" OR "HHHHH" OR "IIIII" OR "JJJJJ" OR "KKKKK" OR "LLLLL" OR "MMMMM" OR "NNNNN" OR "OOOOO" OR "PPPPP" OR "QQQQQ" OR "RRRRR" OR "SSSSS" OR "TTTTT" OR "VVVVV" OR "XXXXX" OR "YYYYY" OR "ZZZZZ" OR "AAAAA" OR "BBBBB" OR "CCCCC" OR "DDDDD" OR "EEEEE" OR "FFFFF" OR "GGGGG" OR "HHHHH" OR "IIIII" OR "JJJJJ" OR "KKKKK" OR "LLLLL" OR "MMMMM" OR "NNNNN" OR "OOOOO" OR "PPPPP" OR "QQQQQ" OR "RRRRR" OR "SSSSS" OR "TTTTT" OR "VVVVV" OR "XXXXX" OR "YYYYY" OR "ZZZZZ" OR "AAAAA" OR "BBBBB" OR "CCCCC" OR "DDDDD" OR "EEEEE" OR "FFFFF" OR "GGGGG" OR "HHHHH" OR "IIIII" OR "JJJJJ" OR "KKKKK" OR "LLLLL" OR "MMMMM" OR "NNNNN" OR "OOOOO" OR "PPPPP" OR "QQQQQ" OR "RRRRR" OR "SSSSS" OR "TTTTT" OR "VVVVV" OR "XXXXX" OR "YYYYY" OR "ZZZZZ" OR "AAAAA" OR "BBBBB" OR "CCCCC" OR "DDDDD" OR "EEEEE" OR "FFFFF" OR "GGGGG" OR "HHHHH" OR "IIIII" OR "JJJJJ" OR "KKKKK" OR "LLLLL" OR "MMMMM" OR "NNNNN" OR "OOOOO" OR "PPPPP" OR "QQQQQ" OR "RRRRR" OR "SSSSS" OR "TTTTT" OR "VVVVV" OR "XXXXX" OR "YYYYY" OR "ZZZZZ" OR "AAAAA" OR "BBBBB" OR "CCCCC" OR "DDDDD" OR "EEEEE" OR "FFFFF" OR "GGGGG" OR "HHHHH" OR "IIIII" OR "JJJJJ" OR "KKKKK" OR "LLLLL" OR "MMMMM" OR "NNNNN" OR "OOOOO" OR "PPPPP" OR "QQQQQ" OR "RRRRR" OR "SSSSS" OR "TTTTT" OR "VVVVV" OR "XXXXX" OR "YYYYY" OR "ZZZZZ" OR "AAAAA" OR "BBBBB" OR "CCCCC" OR "DDDDD" OR "EEEEE" OR "FFFFF" OR "GGGGG" OR "HHHHH" OR "IIIII" OR "JJJJJ" OR "KKKKK" OR "LLLLL" OR "MMMMM" OR "NNNNN" OR "OOOOO" OR "PPPPP" OR "QQQQQ" OR "RRRRR" OR "SSSSS" OR "TTTTT" OR "VVVVV" OR "XXXXX" OR "YYYYY" OR "ZZZZZ" OR "AAAAA" OR "BBBBB" OR "CCCCC" OR "DDDDD" OR "EEEEE" OR "FFFFF" OR "GGGGG" OR "HHHHH" OR "IIIII" OR "JJJJJ" OR "KKKKK" OR "LLLLL" OR "MMMMM" OR "NNNNN" OR "OOOOO" OR "PPPPP" OR "QQQQQ" OR "RRRRR" OR "SSSSS" OR "TTTTT" OR "VVVVV" OR "XXXXX" OR "YYYYY" OR "ZZZZZ" OR "AAAAA" OR "BBBBB" OR "CCCCC" OR "DDDDD" OR "EEEEE" OR "FFFFF" OR "GGGGG" OR "HHHHH" OR "IIIII" OR "JJJJJ" OR "KKKKK" OR "LLLLL" OR "MMMMM" OR "NNNNN" OR "OOOOO" OR "PPPPP" OR "QQQQQ" OR "RRRRR" OR "SSSSS" OR "TTTTT" OR "VVVVV" OR "XXXXX" OR "YYYYY" OR "ZZZZZ" OR "AAAAA" OR "BBBBB" OR "CCCCC" OR "DDDDD" OR "EEEEE" OR "FFFFF" OR "GGGGG" OR "HHHHH" OR "IIIII" OR "JJJJJ" OR "KKKKK" OR "LLLLL" OR "MMMMM" OR "NNNNN" OR "OOOOO" OR "PPPPP" OR "QQQQQ" OR "RRRRR" OR "SSSSS" OR "TTTTT" OR "VVVVV" OR "XXXXX" OR "YYYYY" OR "ZZZZZ" OR "AAAAA" OR "BBBBB" OR "CCCCC" OR "DDDDD" OR "EEEEE" OR "FFFFF" OR "GGGGG" OR "HHHHH" OR "IIIII" OR "JJJJJ" OR "KKKKK" OR "LLLLL" OR "MMMMM" OR "NNNNN" OR "OOOOO" OR "PPPPP" OR "QQQQQ" OR "RRRRR" OR "SSSSS" OR "TTTTT" OR "VVVVV" OR "XXXXX" OR "YYYYY" OR "ZZZZZ" OR "AAAAA" OR "BBBBB" OR "CCCCC" OR "DDDDD" OR "EEEEE" OR "FFFFF" OR "GGGGG" OR "HHHHH" OR "IIIII" OR "JJJJJ" OR "KKKKK" OR "LLLLL" OR "MMMMM" OR "NNNNN" OR "OOOOO" OR "PPPPP" OR "QQQQQ" OR "RRRRR" OR "SSSSS" OR "TTTTT" OR "VVVVV" OR "XXXXX" OR "YYYYY" OR "ZZZZZ" OR "AAAAA" OR "BBBBB" OR "CCCCC" OR "DDDDD" OR "EEEEE" OR "FFFFF" OR "GGGGG" OR "HHHHH" OR "IIIII" OR "JJJJJ" OR "KKKKK" OR "LLLLL" OR "MMMMM" OR "NNNNN" OR "OOOOO" OR "PPPPP" OR "QQQQQ" OR "RRRRR" OR "SSSSS" OR "TTTTT" OR "VVVVV" OR "XXXXX" OR "YYYYY" OR "ZZZZZ" OR "AAAAA" OR "BBBBB" OR "CCCCC" OR "DDDDD" OR "EEEEE" OR "FFFFF" OR "GGGGG" OR "HHHHH" OR "IIIII" OR "JJJJJ" OR "KKKKK" OR "LLLLL" OR "MMMMM" OR "NNNNN" OR "OOOOO" OR "PPPPP" OR "QQQQQ" OR "RRRRR" OR "SSSSS" OR "TTTTT" OR "VVVVV" OR "XXXXX" OR "YYYYY" OR "ZZZZZ" OR "AAAAA" OR "BBBBB" OR "CCCCC" OR "DDDDD" OR "EEEEE" OR "FFFFF" OR "GGGGG" OR "HHHHH" OR "IIIII" OR "JJJJJ" OR "KKKKK" OR "LLLLL" OR "MMMMM" OR "NNNNN" OR "OOOOO" OR "PPPPP" OR "QQQQQ" OR "RRRRR" OR "SSSSS" OR "TTTTT" OR "VVVVV" OR "XXXXX" OR "YYYYY" OR "ZZZZZ" OR "AAAAA" OR "BBBBB" OR "CCCCC" OR "DDDDD" OR "EEEEE" OR "FFFFF" OR "GGGGG" OR "HHHHH" OR "IIIII" OR "JJJJJ" OR "KKKKK" OR "LLLLL" OR "MMMMM" OR "NNNNN" OR "OOOOO" OR "PPPPP" OR "QQQQQ" OR "RRRRR" OR "SSSSS" OR "TTTTT" OR "VVVVV" OR "XXXXX" OR "YYYYY" OR "ZZZZZ" OR "AAAAA" OR "BBBBB" OR "CCCCC" OR "DDDDD" OR "EEEEE" OR "FFFFF" OR "GGGGG" OR "HHHHH" OR "IIIII" OR "JJJJJ" OR "KKKKK" OR "LLLLL" OR "MMMMM" OR "NNNNN" OR "OOOOO" OR "PPPPP" OR "QQQQQ" OR "RRRRR" OR "SSSSS" OR "TTTTT" OR "VVVVV" OR "XXXXX" OR "YYYYY" OR "ZZZZZ" OR "AAAAA" OR "BBBBB" OR "CCCCC" OR "DDDDD" OR "EEEEE" OR "FFFFF" OR "GGGGG" OR "HHHHH" OR "IIIII" OR "JJJJJ" OR "KKKKK" OR "LLLLL" OR "MMMMM" OR "NNNNN" OR "OOOOO" OR "PPPPP" OR "QQQQQ" OR "RRRRR" OR "SSSSS" OR "TTTTT" OR "VVVVV" OR "XXXXX" OR "YYYYY" OR "ZZZZZ" OR "AAAAA" OR "BBBBB" OR "CCCCC" OR "DDDDD" OR "EEEEE" OR "FFFFF" OR "GGGGG" OR "HHHHH" OR "IIIII" OR "JJJJJ" OR "KKKKK" OR "LLLLL" OR "MMMMM" OR "NNNNN" OR "OOOOO" OR "PPPPP" OR "QQQQQ" OR "RRRRR" OR "SSSSS" OR "TTTTT" OR "VVVVV" OR "XXXXX" OR "YYYYY" OR "ZZZZZ" OR "AAAAA" OR "BBBBB" OR "CCCCC" OR "DDDDD" OR "EEEEE" OR "FFFFF" OR "GGGGG" OR "HHHHH" OR "IIIII" OR "JJJJJ" OR "KKKKK" OR "LLLLL" OR "MMMMM" OR "NNNNN" OR "OOOOO" OR "PPPPP" OR "QQQQQ" OR "RRRRR" OR "SSSSS" OR "TTTTT" OR "VVVVV" OR "XXXXX" OR "YYYYY" OR "ZZZZZ" OR "AAAAA" OR "BBBBB" OR "CCCCC" OR "DDDDD" OR "EEEEE" OR "FFFFF" OR "GGGGG" OR "HHHHH" OR "IIIII" OR "JJJJJ" OR "KKKKK" OR "LLLLL" OR "MMMMM" OR "NNNNN" OR "OOOOO" OR "PPPPP" OR "QQQQQ" OR "RRRRR" OR "SSSSS" OR "TTTTT" OR "VVVVV" OR "XXXXX" OR "YYYYY" OR "ZZZZZ" OR "AAAAA" OR "BBBBB" OR "CCCCC" OR "DDDDD" OR "EEEEE" OR "FFFFF" OR "GGGGG" OR "HHHHH" OR "IIIII" OR "JJJJJ" OR "KKKKK" OR "LLLLL" OR "MMMMM" OR "NNNNN" OR "OOOOO" OR "PPPPP" OR "QQQQQ" OR "RRRRR" OR "SSSSS" OR "TTTTT" OR "VVVVV" OR "XXXXX" OR "YYYYY" OR "ZZZZZ" OR "AAAAA" OR "BBBBB" OR "CCCCC" OR "DDDDD" OR "EEEEE" OR "FFFFF" OR "GGGGG" OR "HHHHH" OR "IIIII" OR "JJJJJ" OR "KKKKK" OR "LLLLL" OR "MMMMM" OR "NNNNN" OR "OOOOO" OR "PPPPP" OR "QQQQQ" OR "RRRRR" OR "SSSSS" OR "TTTTT" OR "VVVVV" OR "XXXXX" OR "YYYYY" OR "ZZZZZ" OR "AAAAA" OR "BBBBB" OR "CCCCC" OR "DDDDD" OR "EEEEE" OR "FFFFF" OR "GGGGG" OR "HHHHH" OR "IIIII" OR "JJJJJ" OR "KKKKK" OR "LLLLL" OR "MMMMM" OR "NNNNN" OR "OOOOO" OR "PPPPP" OR "QQQQQ" OR "RRRRR" OR "SSSSS" OR "TTTTT" OR "VVVVV" OR "XXXXX" OR "YYYYY" OR "ZZZZZ" OR "AAAAA" OR "BBBBB" OR "CCCCC" OR "DDDDD" OR "EEEEE" OR "FFFFF" OR "GGGGG" OR "HHHHH" OR "IIIII" OR "JJJJJ" OR "KKKKK" OR "LLLLL" OR "MMMMM" OR "NNNNN" OR "OOOOO" OR "PPPPP" OR "QQQQQ" OR "RRRRR" OR "SSSSS" OR "TTTTT" OR "VVVVV" OR "XXXXX" OR "YYYYY" OR "ZZZZZ" OR "AAAAA" OR "BBBBB" OR "CCCCC" OR "DDDDD" OR "EEEEE" OR "FFFFF" OR "GGGGG" OR "HHHHH" OR "IIIII" OR "JJJJJ" OR "KKKKK" OR "LLLLL" OR "MMMMM" OR "NNNNN" OR "OOOOO" OR "PPPPP" OR "QQQQQ" OR "RRRRR" OR "SSSSS" OR "TTTTT" OR "VVVVV" OR "XXXXX" OR "YYYYY" OR "ZZZZZ" OR "AAAAA" OR "BBBBB" OR "CCCCC" OR "DDDDD" OR "EEEEE" OR "FFFFF" OR "GGGGG" OR "HHHHH" OR "IIIII" OR "JJJJJ" OR "KKKKK" OR "LLLLL" OR "MMMMM" OR "NNNNN" OR "OOOOO" OR "PPPPP" OR "QQQQQ" OR "RRRRR" OR "SSSSS" OR "TTTTT" OR "VVVVV" OR "XXXXX" OR "YYYYY" OR "ZZZZZ" OR "AAAAA" OR "BBBBB" OR "CCCCC" OR "DDDDD" OR "EEEEE" OR "FFFFF" OR "GGGGG" OR "HHHHH" OR "IIIII" OR "JJJJJ" OR "KKKKK" OR "LLLLL" OR "MMMMM" OR "NNNNN" OR "OOOOO" OR "PPPPP" OR "QQQQQ" OR "RRRRR" OR "SSSSS" OR "TTTTT" OR "VVVVV" OR "XXXXX" OR "YYYYY" OR "ZZZZZ" OR "AAAAA" OR "BBBBB" OR "CCCCC" OR "DDDDD" OR "EEEEE" OR "FFFFF" OR "GGGGG" OR "HHHHH" OR "IIIII" OR "JJJJJ" OR "KKKKK" OR "LLLLL" OR "MMMMM" OR "NNNNN" OR "OOOOO" OR "PPPPP" OR "QQQQQ" OR "RRRRR" OR "SSSSS" OR "TTTTT" OR "VVVVV" OR "XXXXX" OR "YYYYY" OR "ZZZZZ" OR "AAAAA" OR "BBBBB" OR "CCCCC" OR "DDDDD" OR "EEEEE" OR "FFFFF" OR "GGGGG" OR "HHHHH" OR "IIIII" OR "JJJJJ" OR "KKKKK" OR "LLLLL" OR "MMMMM" OR "NNNNN" OR "OOOOO" OR "PPPPP" OR "QQQQQ" OR "RRRRR" OR "SSSSS" OR "TTTTT" OR "VVVVV" OR "XXXXX" OR "YYYYY" OR "ZZZZZ" OR "AAAAA" OR "BBBBB" OR "CCCCC" OR "DDDDD" OR "EEEEE" OR "FFFFF" OR "GGGGG" OR "HHHHH" OR "IIIII" OR "JJJJJ" OR "KKKKK" OR "LLLLL" OR "MMMMM" OR "NNNNN" OR "OOOOO" OR "PPPPP" OR "QQQQQ" OR "RRRRR" OR "SSSSS" OR "TTTTT" OR "VVVVV" OR "XXXXX" OR "YYYYY" OR "ZZZZZ" OR "AAAAA" OR "BBBBB" OR "CCCCC" OR "DDDDD" OR "EEEEE" OR "FFFFF" OR "GGGGG" OR "HHHHH" OR "IIIII" OR "JJJJJ" OR "KKKKK" OR "LLLLL" OR "MMMMM" OR "NNNNN" OR "OOOOO" OR "PPPPP" OR "QQQQQ" OR "RRRRR" OR "SSSSS" OR "TTTTT" OR "VVVVV" OR "XXXXX" OR "YYYYY" OR "ZZZZZ" OR "AAAAA" OR "BBBBB" OR "CCCCC" OR "DDDDD" OR "EEEEE" OR "FFFFF" OR "GGGGG" OR "HHHHH" OR "IIIII" OR "JJJJJ" OR "KKKKK" OR "LLLLL" OR "MMMMM" OR "NNNNN" OR "OOOOO" OR "PPPPP" OR "QQQQQ" OR "RRRRR" OR "SSSSS" OR "TTTTT" OR "VVVVV" OR "XXXXX" OR "YYYYY" OR "ZZZZZ" OR "AAAAA" OR "BBBBB" OR "CCCCC" OR "DDDDD" OR "EEEEE" OR "FFFFF" OR "GGGGG" OR "HHHHH" OR "IIIII" OR "JJJJJ" OR "KKKKK" OR "LLLLL" OR "MMMMM" OR "NNNNN" OR "OOOOO" OR "PPPPP" OR "QQQQQ" OR "RRRRR" OR "SSSSS" OR "TTTTT" OR "VVVVV" OR "XXXXX" OR "YYYYY" OR "ZZZZZ" OR "AAAAA" OR "BBBBB" OR "CCCCC" OR "DDDDD" OR "EEEEE" OR "FFFFF" OR "GGGGG" OR "HHHHH" OR "IIIII" OR "JJJJJ" OR "KKKKK" OR "LLLLL" OR "MMMMM" OR "NNNNN" OR "OOOOO" OR "PPPPP" OR "QQQQQ" OR "RRRRR" OR "SSSSS" OR "TTTTT" OR "VVVVV" OR "XXXXX" OR "YYYYY" OR "ZZZZZ" OR "AAAAA" OR "BBBBB" OR "CCCCC" OR "DDDDD" OR "EEEEE" OR "FFFFF" OR "GGGGG" OR "HHHHH" OR "IIIII" OR "JJJJJ" OR "KKKKK" OR "LLLLL" OR "MMMMM" OR "NNNNN" OR "OOOOO" OR "PPPPP" OR "QQQQQ" OR "RRRRR" OR "SSSSS" OR "TTTTT" OR "VVVVV" OR "XXXXX" OR "YYYYY" OR "ZZZZZ" OR "AAAAA" OR "BBBBB" OR "CCCCC" OR "DDDDD" OR "EEEEE" OR "FFFFF" OR "GGGGG" OR "HHHHH" OR "IIIII" OR "JJJJJ" OR "KKKKK" OR "LLLLL" OR "MMMMM" OR "NNNNN" OR "OOOOO" OR "PPPPP" OR "QQQQQ" OR "RRRRR" OR "SSSSS" OR "TTTTT" OR "VVVVV" OR "XXXXX" OR "YYYYY" OR "ZZZZZ" OR "AAAAA" OR "BBBBB" OR "CCCCC" OR "DDDDD" OR "EEEEE" OR "FFFFF" OR "GGGGG" OR "HHHHH" OR "IIIII" OR "JJJJJ" OR "KKKKK" OR "LLLLL" OR "MMMMM" OR "NNNNN" OR "OOOOO" OR "PPPPP" OR "QQQQQ" OR "RRRRR" OR "SSSSS" OR "TTTTT" OR "VVVVV" OR "XXXXX" OR "YYYYY" OR "ZZZZZ" OR "AAAAA" OR "BBBBB" OR "CCCCC" OR "DDDDD" OR "EEEEE" OR "FFFFF" OR "GGGGG" OR "HHHHH" OR "IIIII" OR "JJJJJ" OR "KKKKK" OR "LLLLL" OR "MMMMM" OR "NNNNN" OR "OOOOO" OR "PPPPP" OR "QQQQQ" OR "RRRRR" OR "SSSSS" OR "TTTTT" OR "VVVVV" OR "XXXXX" OR "YYYYY" OR "ZZZZZ" OR "AAAAA" OR "BBBBB" OR "CCCCC" OR "DDDDD" OR "EEEEE" OR "FFFFF" OR "GGGGG" OR "HHHHH" OR "IIIII" OR "JJJJJ" OR "KKKKK" OR "LLLLL" OR "MMMMM" OR "NNNNN" OR "OOOOO" OR "PPPPP" OR "QQQQQ" OR "RRRRR" OR "SSSSS" OR "TTTTT" OR "VVVVV" OR "XXXXX" OR "YYYYY" OR "ZZZZZ" OR "AAAAA" OR "BBBBB" OR "CCCCC" OR "DDDDD" OR "EEEEE" OR "FFFFF" OR "GGGGG" OR "HHHHH" OR "IIIII" OR "JJJJJ" OR "KKKKK" OR "LLLLL" OR "MMMMM" OR "NNNNN" OR "OOOOO" OR "PPPPP" OR "QQQQQ" OR "RRRRR" OR "SSSSS" OR "TTTTT" OR "VVVVV" OR "XXXXX" OR "YYYYY" OR "ZZZZZ" OR "AAAAA" OR "BBBBB" OR "CCCCC" OR "DDDDD" OR "EEEEE" OR "FFFFF" OR "GGGGG" OR "HHHHH" OR "IIIII" OR "JJJJJ" OR "KKKKK" OR "LLLLL" OR "MMMMM" OR "NNNNN" OR "OOOOO" OR "PPPPP" OR "QQQQQ" OR "RRRRR" OR "SSSSS" OR "TTTTT" OR "VVVVV" OR "XXXXX" OR "YYYYY" OR "ZZZZZ" OR "AAAAA" OR "BBBBB" OR "CCCCC" OR "DDDDD" OR "EEEEE" OR "FFFFF" OR "GGGGG" OR "HHHHH" OR "IIIII" OR "JJJJJ" OR "KKKKK" OR "LLLLL" OR "MMMMM" OR "NNNNN" OR "OOOOO" OR "PPPPP" OR "QQQQQ" OR "RRRRR" OR "SSSSS" OR "TTTTT" OR "VVVVV" OR "XXXXX" OR "YYYYY" OR "ZZZZZ" OR "AAAAA" OR "BBBBB" OR "CCCCC" OR "DDDDD" OR "EEEEE" OR "FFFFF" OR "GGGGG" OR "HHHHH" OR "IIIII" OR "JJJJJ" OR "KKKKK" OR "LLLLL" OR "MMMMM" OR "NNNNN" OR "OOOOO" OR "PPPPP" OR "QQQQQ" OR "RRRRR" OR "SSSSS" OR "TTTTT" OR "VVVVV" OR "XXXXX" OR "YYYYY" OR "ZZZZZ" OR "AAAAA" OR "BBBBB" OR "CCCCC" OR "DDDDD" OR "EEEEE" OR "FFFFF" OR "GGGGG" OR "HHHHH" OR "IIIII" OR "JJJJJ" OR "KKKKK" OR "LLLLL" OR "MMMMM" OR "NNNNN" OR "OOOOO" OR "PPPPP" OR "QQQQQ" OR "RRRRR" OR "SSSSS" OR "TTTTT" OR "VVVVV" OR "XXXXX" OR "YYYYY" OR "ZZZZZ" OR "AAAAA" OR "BBBBB" OR "CCCCC" OR "DDDDD" OR "EEEEE" OR "FFFFF" OR "GGGGG" OR "HHHHH" OR "IIIII" OR "JJJJJ" OR "KKKKK" OR "LLLLL" OR "MMMMM" OR "NNNNN" OR "OOOOO" OR "PPPPP" OR "QQQQQ" OR "RRRRR" OR "SS

PLAT OF
HARLEY TRACT WITHIN LOOP INDUSTRIAL DISTRICT, UNIT NO. 1,
A REPLAT OF HARLEY TRACT FOR U-HAUL
 LOCATED IN: SECTION 14, TOWNSHIP 11 NORTH, RANGE 3 EAST, ELENA GALLEGOS GRANT
 CITY OF ALBUQUERQUE, BERNALILLO COUNTY, NEW MEXICO 87107
 OCTOBER, 2025



LINE TABLE

LINE	BEARING	DISTANCE
L1(M)	N 80°29'27"E	9.50'
L2(M)	N 80°27'12"W	11.50'
L3(M)	S 80°29'19"W	8.10'
L4(M)	S 80°29'19"W	8.10'
L5(M)	S 80°29'52"W	22.45'
L6(M)	N 80°28'19"E	22.95'



LEGEND & SYMBOLS

- FOUND MONUMENT (AS NOTED)
- ⊕ COMPUTED POINT
- ⊙ SET MONUMENT (AS NOTED)
- ⊙ LIGHT POLE
- ⊙ POWER POLE
- ⊙ GUY WIRE ANCHOR
- ⊙ ELECTRIC METER
- ⊙ ELECTRIC CABINET
- ⊙ ELECTRIC VALVE
- ⊙ ELECTRIC BODY
- ⊙ TELEPHONE PEDESTAL
- ⊙ TELEPHONE MANHOLE
- ⊙ FIRE HYDRANT
- ⊙ WATER VALVE
- ⊙ SEWER MANHOLE
- ⊙ DRAINAGE MANHOLE
- ⊙ MANHOLE
- ⊙ GRATED INLET
- ⊙ SIGN
- ⊙ UTILITY VAULT
- ⊙ YARD HYDRANT
- ⊙ BOLLARD
- ⊙ OVERHEAD POWER LINE
- ⊙ RIGHT-OF-WAY (RW)
- ⊙ CENTERLINE (CL)
- ⊙ UNDERGROUND SWER LINE
- ⊙ UNDERGROUND STORM LINE
- ⊙ CENTERLINE RAILROAD
- ⊙ RETAINING WALL
- ⊙ ADJUSTED PROPERTY LINE
- ⊙ FLOOD ZONE AE
- ⊙ NOW OR FORMERLY
- ⊙ MEASURED/CALCULATED DIMENSION
- ⊙ RECORD DIMENSION

VERTICAL & HORIZONTAL SURVEY MON.
 FOUND 3.5 BRASS DISC BEARS S 19113
 GEODETIC REFERENCE ID REVES 2 - F01738
 GEOSPHERIC POSITION (WGS 1983)
 NM STATE PLANE COORDINATES
 (CENTRAL ZONE IS SURVEY FOOT)
 N 1316588.742 US FT. E 1342008.82 US FT
 GROUND TO GRID FACTOR 0.9997342
 DELTA ALPHA -00°12'16.1"
 NAVD 1988 ELEVATION 5078.000 US FT

CURVE TABLE

CURVE	RADIUS	ARC LENGTH	DELTA ANGLE	CHORD BEARING	CHORD LENGTH
C1(M)	851.60'	121.58'	16°39'11"	N 72°29'10"E	121.11'
C2(M)	873.20'	124.71'	10°38'50"	N 11°58'51"E	124.53'
C3(B)	873.20'	124.71'	N/A	N/A	124.53'

DISCLAIMER:
 IN APPROVING THIS PLAT, PUBLIC SERVICE COMPANY OF NEW MEXICO (P.S.C.O. NEW MEXICO GAS COMPANY (NMGC) AND GASTEC CORPORATION, DBA CENTURYLINK (CWEST) DID NOT CONDUCT A TITLE SEARCH OF THE PROPERTIES SHOWN HEREON. CONSEQUENTLY, NMGC AND GASTEC DO NOT WAIVE OR RELEASE ANY EASEMENT OR EASEMENT RIGHTS WHICH MAY HAVE BEEN GRANTED BY PRIOR PLAT, DEED OR OTHER DOCUMENT AND WHICH ARE NOT SHOWN ON THIS PLAT.

BLEW & ASSOCIATES, P.A.

3825 N. SHELDON DRIVE - FAYETTEVILLE, AR 72703
 OFFICE: 479.443.4506 - FAX: 479.582.1883
 SURVEY@BLEWINC.COM
 WWW.BLEWINC.COM

SURVEYOR JOB NUMBER: 21-0102-01	SURVEY DRAWN BY: AUC - 07/07/2025
SURVEY REVIEWED BY: TSM	SCALE: 1" = 80'

FOR THE USE AND BENEFIT OF:
AMERCO