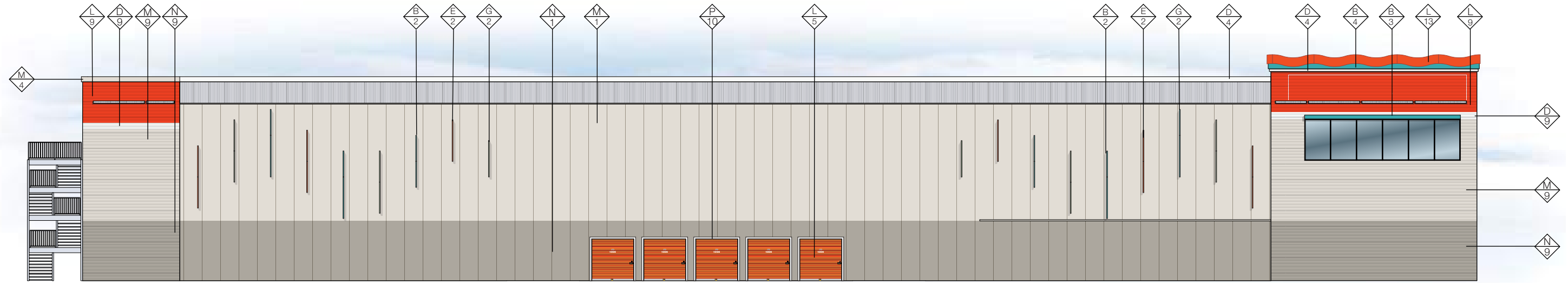


SOUTH ELEVATION - BLDG. A

Scale: 1" = 20'



WEST ELEVATION - BLDG. A

Scale: 1" = 20'

GENERAL NOTES:

D1 - THE PROPOSED IMP USES FULL-WIDTH PANELS. DO NOT CUT PANELS DUE TO PAINT VARIATIONS. CONSULT WITH UHI CONSTRUCTION DEPT. OR A&M ASSOCIATES BEFORE CUTTING IMP.

D2 - THE PROPOSED PROJECT CONSISTS OF 42" WIDE IMP. DEVIATING FROM THIS SIZE PANEL WILL ALTER THE LYRICAL FIN DESIGN. PLEASE CONSULT WITH UHI CONSTRUCTION DEPT. OR A&M ASSOCIATES BEFORE CHANGING THE PLACEMENT AND WIDTH OF THIS PANEL.

COLORS

A	U-HAUL GREEN (MBCI CUSTOM COLOR)
B	SW 6767 DESERT JEWEL P62
C	IRONWOOD (FAUX WOODGRAIN FINISH)
D	SW 6182 ETHEREAL WHITE P57
E	SW 6884 AMBER EARTH P63
F	LIGHT BROOM FINISHED TILT WALL
G	SW 6451 NURTURE GREEN P61
H	SW EGGHELL BLACK P100
I	GALVANIZED TRIM
J	POLAR WHITE (IMP CUSTOM COLOR)
K	U-HAUL PROMO GREEN P5
L	SIERRA SUNSET LRV:21 P6
M	SANDSTONE LRV:44 (IMP CUSTOM COLOR)
N	DRIFTWOOD LRV:35 (IMP CUSTOM COLOR)
O	SILVERSMITH LRV:50 (CS-620)
P	ULTRA WHITE P1

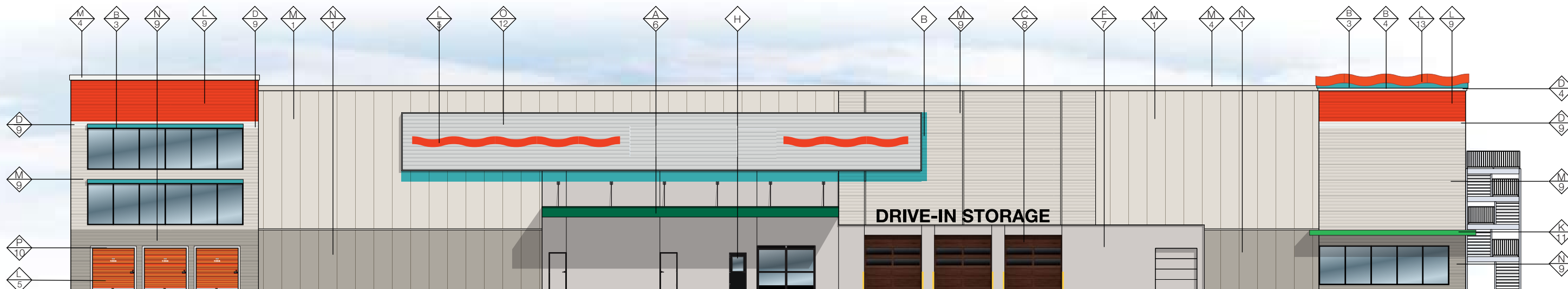
MATERIALS

1	42"W METL-SPAN SANTA FE STUCCO EMBOSSED VERTICAL IMP
2	9"D LYRICAL ARTICULATED DESIGN ELEMENT
3	9"H x 3"D ARCHITECTURAL DETAILS
4	12"H ROOF TRIMS TYP.
5	ARCHITECTURAL DETAILS
6	2'H x 57'W x 10'D STORAGE: LOAD/UNLOAD AWNING
7	LIGHT BROOM FINISHED CONCRETE TILT-UP WALLS
8	ULTRA-GRAIN CLASSIC WALNUT CARRIAGE DOORS
9	36"W METL-SPAN 7.2 HORIZONTAL IMP
10	4.5"H TRIM TYP.
11	1'H x 38'W x 2'D CUSTOMER ENTRANCE AWNING
12	16"W METL-SPAN CS-620 HORIZONTAL PANELS
13	CORNICE DETAIL
14	SCUPPERS
15	12"W METL-SPAN CONCEPT SERIES IW-10A HORIZONTAL PANELS



NORTH ELEVATION - BLDG. A

Scale: 1" = 20'



EAST ELEVATION - BLDG. A

Scale: 1" = 20'

GENERAL NOTES:

D1 - THE PROPOSED IMP USES FULL-WIDTH PANELS. DO NOT CUT PANELS DUE TO PAINT VARIATIONS. CONSULT WITH UHI CONSTRUCTION DEPT. OR A&M ASSOCIATES BEFORE CUTTING IMP.

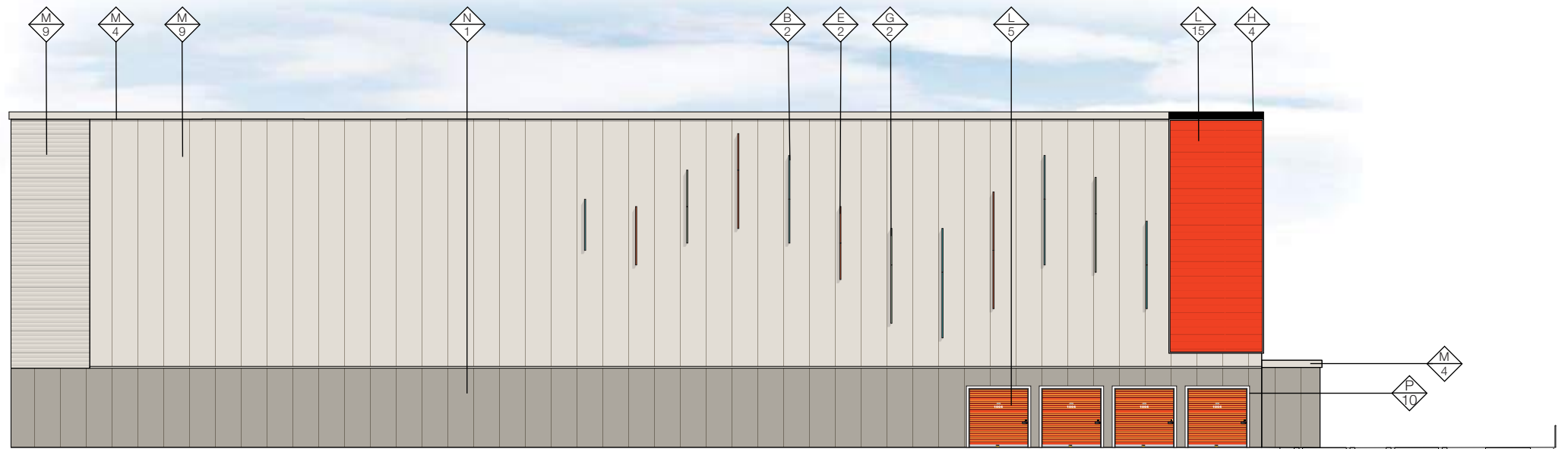
D2 - THE PROPOSED PROJECT CONSISTS OF 42" WIDE IMP. DEVIATING FROM THIS SIZE PANEL WILL ALTER THE LYRICAL FIN DESIGN. PLEASE CONSULT WITH UHI CONSTRUCTION DEPT. OR A&M ASSOCIATES BEFORE CHANGING THE PLACEMENT AND WIDTH OF THIS PANEL.

COLORS

A	U-HAUL GREEN (MBCI CUSTOM COLOR)
B	SW 6767 DESERT JEWEL P62
C	IRONWOOD (FAUX WOODGRAIN FINISH)
D	SW 6182 ETHEREAL WHITE P57
E	SW 6884 AMBER EARTH P63
F	LIGHT BROOM FINISHED TILT WALL
G	SW 6451 NURTURE GREEN P61
H	SW EGGHELL BLACK P100
I	GALVANIZED TRIM
J	POLAR WHITE (IMP CUSTOM COLOR)
K	U-HAUL PROMO GREEN P5
L	SIERRA SUNSET LRV:21 P6
M	SANDSTONE LRV:44 (IMP CUSTOM COLOR)
N	DRIFTWOOD LRV:35 (IMP CUSTOM COLOR)
O	SILVERSMITH LRV:50 (CS-620)
P	ULTRA WHITE P1

MATERIALS

1	42"W METL-SPAN SANTA FE STUCCO EMBOSSED VERTICAL IMP
2	9"D LYRICAL ARTICULATED DESIGN ELEMENT
3	9"H x 3"D ARCHITECTURAL DETAILS
4	12"H ROOF TRIMS TYP.
5	ARCHITECTURAL DETAILS
6	2'H x 57'W x 10'D STORAGE: LOAD/UNLOAD AWNING
7	LIGHT BROOM FINISHED CONCRETE TILT-UP WALLS
8	ULTRA-GRAIN CLASSIC WALNUT CARRIAGE DOORS
9	36"W METL-SPAN 7.2 HORIZONTAL IMP
10	4.5"H TRIM TYP.
11	1'H x 38'W x 2'D CUSTOMER ENTRANCE AWNING
12	16"W METL-SPAN CS-620 HORIZONTAL PANELS
13	CORNICE DETAIL
14	SCUPPERS
15	12"W METL-SPAN CONCEPT SERIES IW-10A HORIZONTAL PANELS



WEST ELEVATION - BLDG. B

Scale: 1" = 20'



SOUTH ELEVATION - BLDG. B

Scale: 1" = 20'

GENERAL NOTES:

D1 - THE PROPOSED IMP USES FULL-WIDTH PANELS. DO NOT CUT PANELS DUE TO PAINT VARIATIONS. CONSULT WITH UHI CONSTRUCTION DEPT. OR A&M ASSOCIATES BEFORE CUTTING IMP.

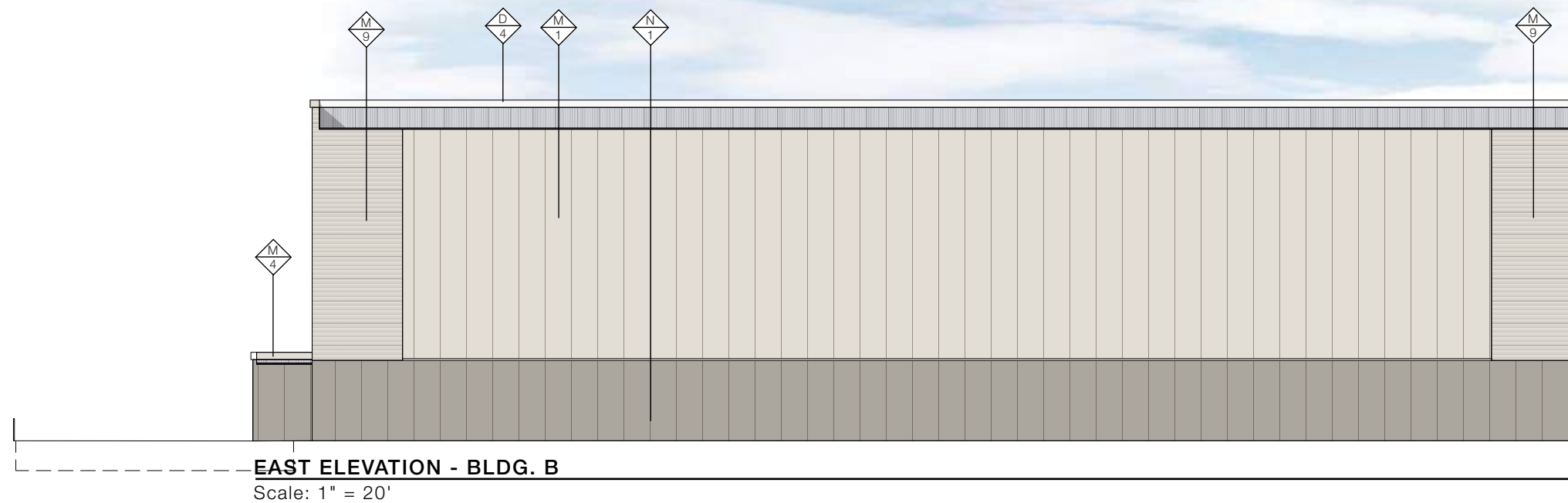
D2 - THE PROPOSED PROJECT CONSISTS OF 42" WIDE IMP. DEVIATING FROM THIS SIZE PANEL WILL ALTER THE LYRICAL FIN DESIGN. PLEASE CONSULT WITH UHI CONSTRUCTION DEPT. OR A&M ASSOCIATES BEFORE CHANGING THE PLACEMENT AND WIDTH OF THIS PANEL.

COLORS

A	U-HAUL GREEN (MBCI CUSTOM COLOR)
B	SW 6767 DESERT JEWEL P62
C	IRONWOOD (FAUX WOODGRAIN FINISH)
D	SW 6182 ETHEREAL WHITE P57
E	SW 6884 AMBER EARTH P63
F	LIGHT BROOM FINISHED TILT WALL
G	SW 6451 NURTURE GREEN P61
H	SW EGGHELL BLACK P100
I	GALVANIZED TRIM
J	POLAR WHITE (IMP CUSTOM COLOR)
K	U-HAUL PROMO GREEN P5
L	SIERRA SUNSET LRV:21 P6
M	SANDSTONE LRV:44 (IMP CUSTOM COLOR)
N	DRIFTWOOD LRV:35 (IMP CUSTOM COLOR)
O	SILVERSMITH LRV:50 (CS-620)
P	ULTRA WHITE P1

MATERIALS

1	42"W METL-SPAN SANTA FE STUCCO EMBOSSED VERTICAL IMP
2	9"D LYRICAL ARTICULATED DESIGN ELEMENT
3	9"H x 3"D ARCHITECTURAL DETAILS
4	12"H ROOF TRIMS TYP.
5	ARCHITECTURAL DETAILS
6	2'H x 57'W x 10'D STORAGE: LOAD/UNLOAD AWNING
7	LIGHT BROOM FINISHED CONCRETE TILT-UP WALLS
8	ULTRA-GRAIN CLASSIC WALNUT CARRIAGE DOORS
9	36"W METL-SPAN 7.2 HORIZONTAL IMP
10	4.5"H TRIM TYP.
11	1'H x 38'W x 2'D CUSTOMER ENTRANCE AWNING
12	16"W METL-SPAN CS-620 HORIZONTAL PANELS
13	CORNICE DETAIL
14	SCUPPERS
15	12"W METL-SPAN CONCEPT SERIES IW-10A HORIZONTAL PANELS



EAST ELEVATION - BLDG. B

Scale: 1" = 20'



NORTH ELEVATION - BLDG. B

Scale: 1" = 20'

GENERAL NOTES:

D1 - THE PROPOSED IMP USES FULL-WIDTH PANELS. DO NOT CUT PANELS DUE TO PAINT VARIATIONS. CONSULT WITH UHI CONSTRUCTION DEPT. OR A&M ASSOCIATES BEFORE CUTTING IMP.

D2 - THE PROPOSED PROJECT CONSISTS OF 42" WIDE IMP. DEVIATING FROM THIS SIZE PANEL WILL ALTER THE LYRICAL FIN DESIGN. PLEASE CONSULT WITH UHI CONSTRUCTION DEPT. OR A&M ASSOCIATES BEFORE CHANGING THE PLACEMENT AND WIDTH OF THIS PANEL.

COLORS

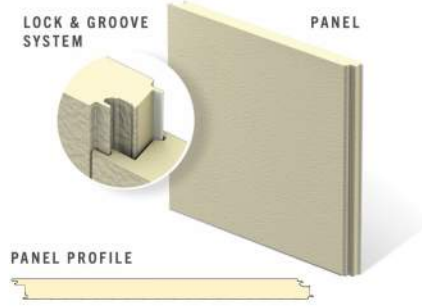
A	U-HAUL GREEN (MBCI CUSTOM COLOR)
B	SW 6767 DESERT JEWEL P62
C	IRONWOOD (FAUX WOODGRAIN FINISH)
D	SW 6182 ETHEREAL WHITE P57
E	SW 6884 AMBER EARTH P63
F	LIGHT BROOM FINISHED TILT WALL
G	SW 6451 NURTURE GREEN P61
H	SW EGGHELL BLACK P100
I	GALVANIZED TRIM
J	POLAR WHITE (IMP CUSTOM COLOR)
K	U-HAUL PROMO GREEN P5
L	SIERRA SUNSET LRV:21 P6
M	SANDSTONE LRV:44 (IMP CUSTOM COLOR)
N	DRIFTWOOD LRV:35 (IMP CUSTOM COLOR)
O	SILVERSMITH LRV:50 (CS-620)
P	ULTRA WHITE P1

MATERIALS

1	42"W METL-SPAN SANTA FE STUCCO EMBOSSED VERTICAL IMP
2	9"D LYRICAL ARTICULATED DESIGN ELEMENT
3	9"H x 3"D ARCHITECTURAL DETAILS
4	12"H ROOF TRIMS TYP.
5	ARCHITECTURAL DETAILS
6	2'H x 57'W x 10'D STORAGE: LOAD/UNLOAD AWNING
7	LIGHT BROOM FINISHED CONCRETE TILT-UP WALLS
8	ULTRA-GRAIN CLASSIC WALNUT CARRIAGE DOORS
9	36"W METL-SPAN 7.2 HORIZONTAL IMP
10	4.5"H TRIM TYP.
11	1'H x 38'W x 2'D CUSTOMER ENTRANCE AWNING
12	16"W METL-SPAN CS-620 HORIZONTAL PANELS
13	CORNICE DETAIL
14	SCUPPERS
15	12"W METL-SPAN CONCEPT SERIES IW-10A HORIZONTAL PANELS

Metl-Span Santa Fe (or Equivalent IMP)

The Metl-Span CF Santa Fe panel has a flat exterior profile with a heavy, embossed stucco texture that mimics the look of a masonry stucco finish but with the added value of an insulated metal panel. The profile is flush with the warmth of an old-world finish, providing a visually pleasing building.



PRODUCT SPECIFICATIONS

WIDTH • 24", 30", 36", 42"

THICKNESS • 2", 2½", 2¾", 3", 4"

LENGTH • 8'-0" to 32'-0" Horizontal
8'-0" to 40'-0" Vertical

EXTERIOR PROFILE • Flat profile with heavy embossing resembling desert southwestern appearance

EXTERIOR FACE • G-90 galvanized or AZ-50 aluminum-zinc coated steel in 24 and 22 Ga.

INTERIOR PROFILE • Light Mesa, nominal ¼" deep, embossed or unembossed

INTERIOR FACE • G-90 galvanized or AZ-50 aluminum-zinc coated in 26, 24 and 22 Ga.

CORE • Foamed-in-place, PUR Foam Core, zero ozone depleting (zero ODP) Class 1 foam

JOINT • Offset double tongue-and-groove with extended metal shelf for positive face fastening

REVEAL • Up to 1" reveal options in ¼", ½", ¾" and 1" increments

U-FACTORS AND R-VALUES**

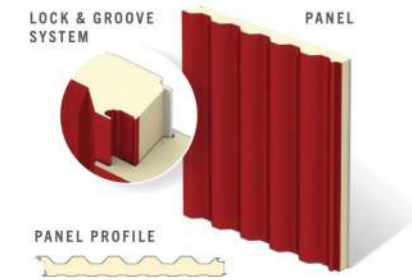
U-FACTOR (BTU/h-ft ² -F)		R-VALUE (h-ft ² -F/BTU)	
PANEL WIDTH: 42"		PANEL WIDTH: 42"	
2"	0.059	2"	17.5
2.5"	0.046	2.5"	21.9
3"	0.038	3"	26.2
4"	0.028	4"	35.0

*Available only from Nevada plant
**Based on ASTM C518, ASTM C1363 and thermal modeling



Metl-Span CF 7.2 (or Equivalent IMP)

The CF 7.2 Insul-Rib insulated metal panel combines a traditional 7.2 rib panel with an insulated core. With a bold, ribbed pattern, this panel creates a unique building profile that stands out, ideal for any commercial or industrial application. The 7.2 Insul-Rib panel can be installed both vertically and horizontally, allowing architects flexibility with design.



PRODUCT SPECIFICATIONS

WIDTH • Nominal 36"

THICKNESS • 3", 4" Rib height included in thickness

LENGTH • NON-DIRECTIONAL EMBOSSED
8'-0" to 32'-0" Horizontal
8'-0" to 40'-0" Vertical
• UNEMBOSSED
8'-0" to 32'-0" Horizontal
8'-0" to 40'-0" Vertical

EXTERIOR PROFILE • 7.2" on center rib pattern, 1½" tall, embossed or unembossed

EXTERIOR FACE • G-90 galvanized or AZ-50 aluminum-zinc coated steel in 26, 24 and **22 Ga.

INTERIOR PROFILE • Mesa, nominal ¼" deep, embossed or unembossed

INTERIOR FACE • G-90 galvanized or AZ-50 aluminum-zinc coated steel in 26, 24 and 22 Ga.

CORE • Foamed-in-place, PUR Foam Core, zero ozone depleting (zero ODP) Class 1 foam

JOINT • Offset double tongue-and-groove with extended metal shelf for positive face fastening^Δ

U-FACTORS AND R-VALUES*

U-FACTOR (BTU/h-ft ² -F)		R-VALUE (h-ft ² -F/BTU)	
PANEL WIDTH: 36"		PANEL WIDTH: 36"	
		35"	
3"	0.066	3"	15.2
4"	0.043	4"	23.3

*Based on ASTM C1363 and thermal modeling.
**Not available in unembossed
Δ Through fastening required at panels ends.



IW-10A Panel (or Equivalent Panel)

The concealed fastener IW Series metal siding rainscreen panels eliminate exposed fasteners for a clean, unbroken, and appealing aesthetic. The IW-10A single skin metal panels offer a 12" sleek look and is an ideal option for both new industrial metal rainscreen construction and retrofit projects.

With the ability to install the panels year-round, installation time is shortened, leading to fast-track scheduling and a potential reduction in construction costs.

All IW panels share a common lock-joint design, making them interchangeable on projects.



12" w panel - IW-10A

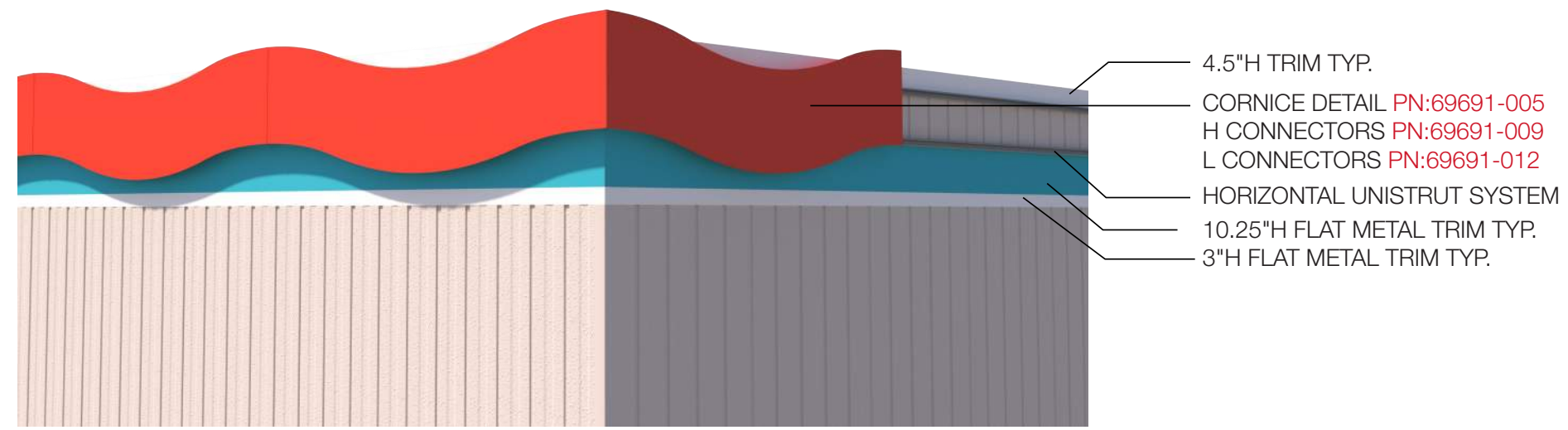


Light Broom Finished
TILT-UP CONCRETE
EXAMPLE

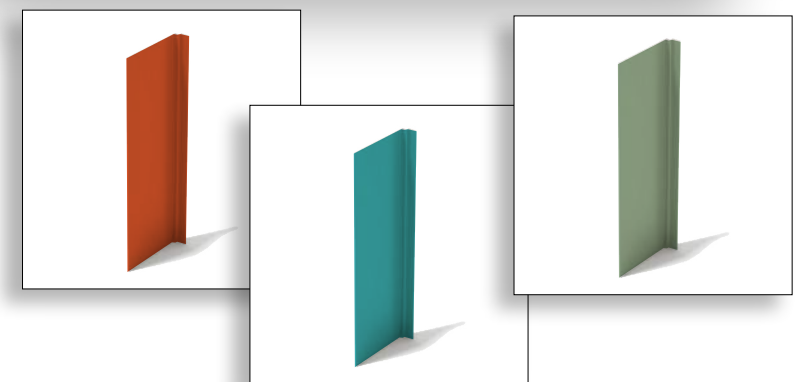


Stucco
Embossed IMP
EXAMPLE

Parapet Cornice Detail



9"D Lyrical Articulated Design Element



CS-260 Panel (or Equivalent Panel)

Concept Series single-skin concealed fastener metal siding panels feature concealed fasteners and a common-lock joint that allows the panels to be integrated with each other. CS-260 interchangeable single-skin metal panels have 12" wide coverage, 7/8" deep profiled panels featuring three asymmetrical ribs.

Systems may vary from an uninsulated screen wall to a lock joint metal wall panel system utilizing BW Systems, which is an insulated composite backup panel system. This wall panel system has two attachment clip options.

All Concept Series wall panels can be installed in a variety of horizontal or vertical rainscreen applications to form a complete wall system.

