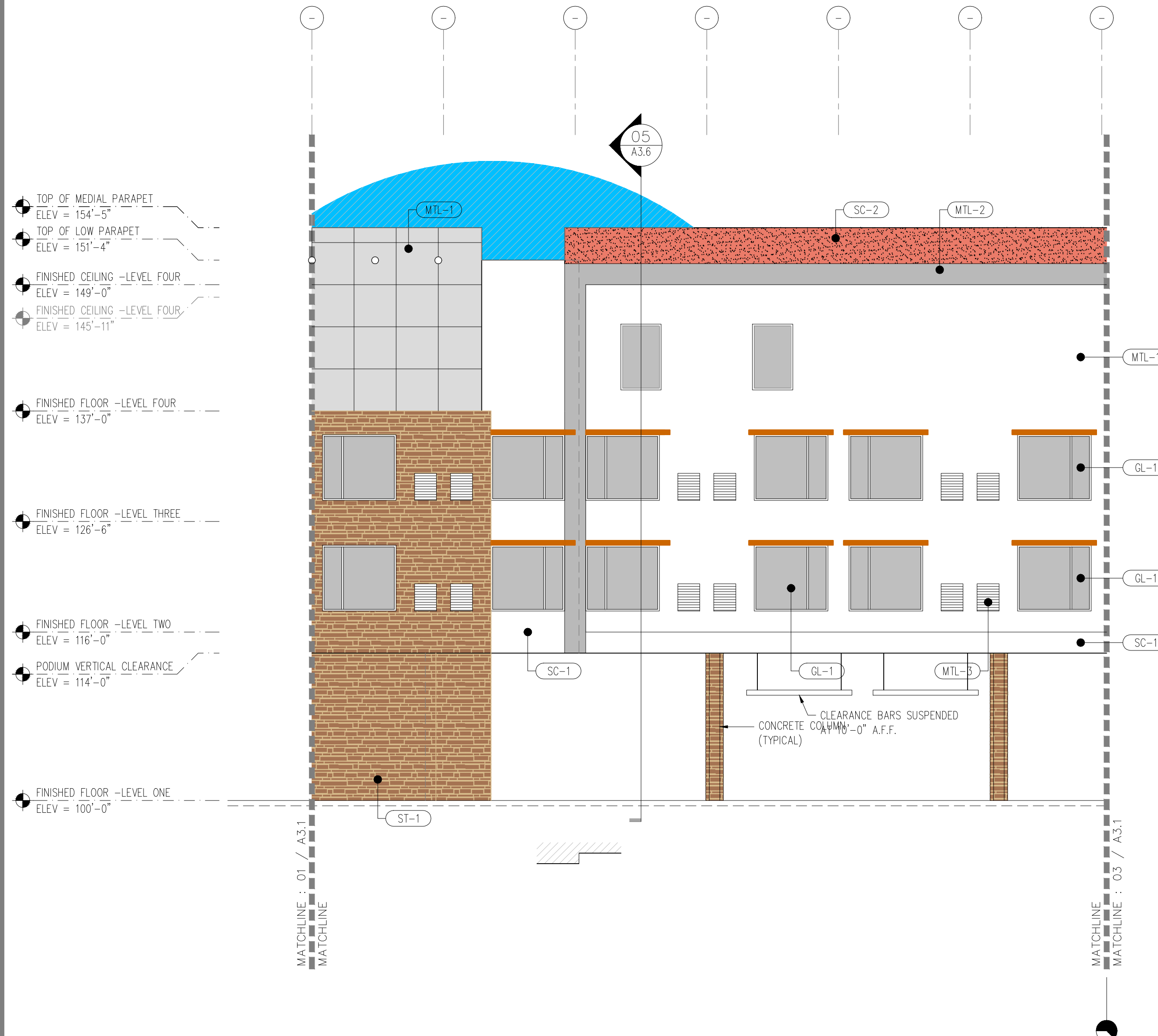


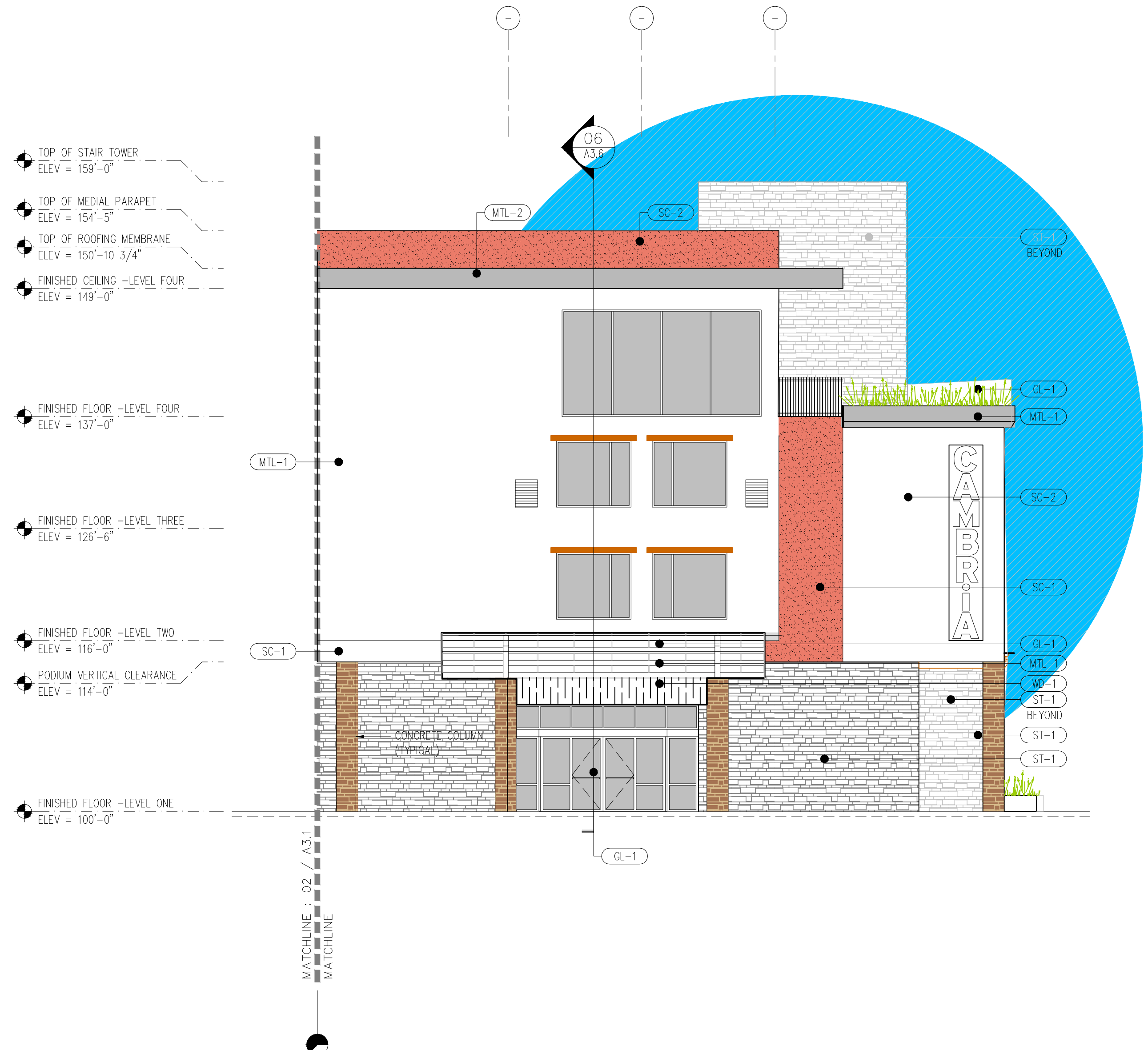
The project has been approved by the City of Albuquerque for all information, all or in part, on the date of this approval.



01 EXTERIOR ELEVATION
EAST FACADE
SCALE: 1/8" = 1'-0"



02 EXTERIOR ELEVATION
EAST FACADE
SCALE: 1/8" = 1'-0"



03 EXTERIOR ELEVATION
EAST FACADE - LEG
SCALE: 1/8" = 1'-0"

EXTERIOR FINISHES KEYNOTE LEGEND

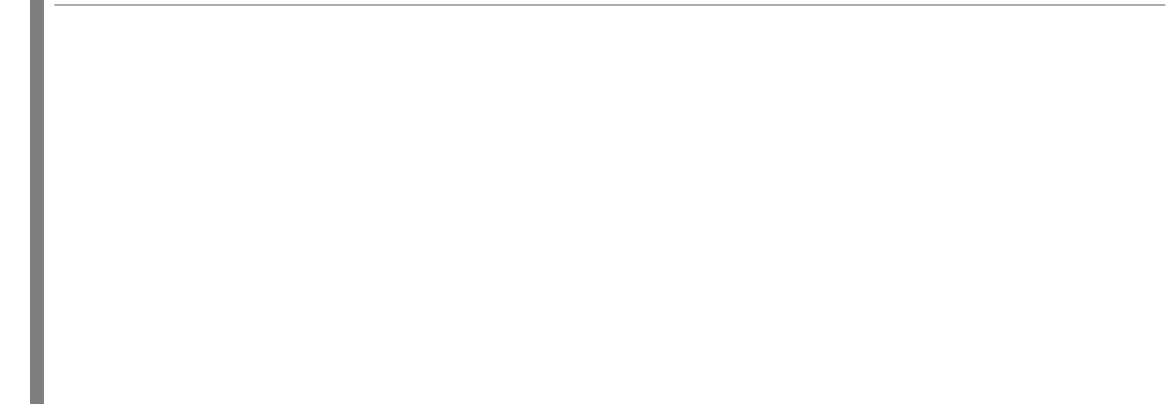
	GL-1	VISION GLASS
	SP-1	SPANDREL GLASS
	MTL-1	METAL PANEL SYSTEM
	MTL-2	COLORIZED METAL ACCENT PANELS
	MTL-3	ALUMINUM PTAC LOUVER
	LTS-1	LED LIGHT STRIPS
	SC-1	STUCCO - COLOR 1
	SC-2	STUCCO - COLOR 2
	P-1	PAINT - TO MATCH PT-1
	ST-1	STONE

EXTERIOR FINISHES SCHEDULE

FINISH TAG	MATERIAL	ITEM DESCRIPTION
GL-1	VISION GLASS	VISION GLASS WITH LOW-E FILM APPLIED, KAWNEER CLEAR ANODIZED FINISH AA 4325
SP-1	SPANDREL GLASS	SPANDREL GLASS, 3 MM4BCY.5 BOY GREY
MTL-1	METAL PANEL SYSTEM	COLOR TO MATCH SW 6256 SERIOUS GREY
MTL-2	COLORIZED METAL ACCENT PANELS	COLOR TO MATCH SW 6346 PENNY WISE
MTL-3	ALUMINUM PTAC LOUVER	AGX-AEL 42 CLEAR ANODIZED, RELIABLE PRODUCTS
LTS-1	LED LIGHT STRIPS	LED LIGHT STRIPS, xxxxxxx
SC-1	STUCCO	STUCCO, COLOR TBD
SC-2	STUCCO	STUCCO, COLOR TBD
P-1	PAINT	PAINT, TBD
ST-1	STONE	LEDGE STONE - COLOR AND TEXTURE - TBD
	PRE-ENGINEERED ORNAMENTAL ROOF STRUCTURE	

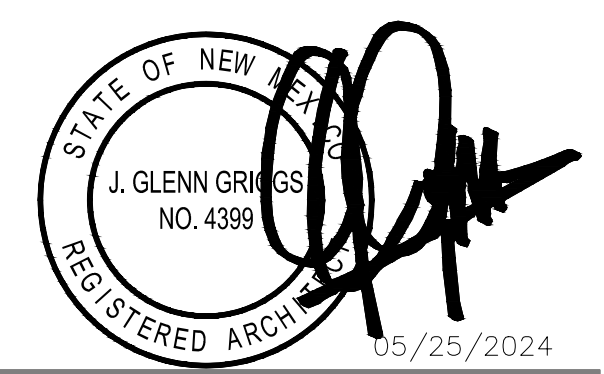
PER IDO SECTION 5-11(E)(2)(b)
WINDOWS ON UPPER FLOORS SHALL BE RECESSED NOT LESS THAN 2".

KEY PLAN



hospitality design management

DALLAS FT. WORTH - MEMPHIS
NO. 214.288.8885
www.g2gm.com



SEAL

DATE: 05/25/2024

SCALE: 1/8" = 1'-0"

PROJECT: CAMBRIA HOTELS

LOCATION: 2026 CENTRAL AVENUE, ALBUQUERQUE, NM

APPLICATION #: SI-2024-00597

DATE: MAY 24, 2024

REVISION DESCRIPTION

01/17/23 30% BRAND SUBMITTAL

02/16/23 01 REVISED 30% DESIGN SUBMITTAL WITH REVISED OWNER DIRECTION

07/31/23 60% DESIGN DEVELOPMENT BRAND SUBMITTAL

11/20/23 60% DESIGN DEVELOPMENT BRAND RESUBMITTAL, WITHOUT INTERIOR DESIGN

DATE: MAY 24, 2024

REVISION DESCRIPTION

01/17/23 30% BRAND SUBMITTAL

02/16/23 01 REVISED 30% DESIGN SUBMITTAL WITH REVISED OWNER DIRECTION

07/31/23 60% DESIGN DEVELOPMENT BRAND SUBMITTAL

11/20/23 60% DESIGN DEVELOPMENT BRAND RESUBMITTAL, WITHOUT INTERIOR DESIGN

DATE: MAY 24, 2024

REVISION DESCRIPTION

01/17/23 30% BRAND SUBMITTAL

02/16/23 01 REVISED 30% DESIGN SUBMITTAL WITH REVISED OWNER DIRECTION

07/31/23 60% DESIGN DEVELOPMENT BRAND SUBMITTAL

11/20/23 60% DESIGN DEVELOPMENT BRAND RESUBMITTAL, WITHOUT INTERIOR DESIGN

DATE: MAY 24, 2024

REVISION DESCRIPTION

01/17/23 30% BRAND SUBMITTAL

02/16/23 01 REVISED 30% DESIGN SUBMITTAL WITH REVISED OWNER DIRECTION

07/31/23 60% DESIGN DEVELOPMENT BRAND SUBMITTAL

11/20/23 60% DESIGN DEVELOPMENT BRAND RESUBMITTAL, WITHOUT INTERIOR DESIGN

DATE: MAY 24, 2024

REVISION DESCRIPTION

01/17/23 30% BRAND SUBMITTAL

02/16/23 01 REVISED 30% DESIGN SUBMITTAL WITH REVISED OWNER DIRECTION

07/31/23 60% DESIGN DEVELOPMENT BRAND SUBMITTAL

11/20/23 60% DESIGN DEVELOPMENT BRAND RESUBMITTAL, WITHOUT INTERIOR DESIGN

DATE: MAY 24, 2024

REVISION DESCRIPTION

01/17/23 30% BRAND SUBMITTAL

02/16/23 01 REVISED 30% DESIGN SUBMITTAL WITH REVISED OWNER DIRECTION

07/31/23 60% DESIGN DEVELOPMENT BRAND SUBMITTAL

11/20/23 60% DESIGN DEVELOPMENT BRAND RESUBMITTAL, WITHOUT INTERIOR DESIGN

DATE: MAY 24, 2024

REVISION DESCRIPTION

01/17/23 30% BRAND SUBMITTAL

02/16/23 01 REVISED 30% DESIGN SUBMITTAL WITH REVISED OWNER DIRECTION

07/31/23 60% DESIGN DEVELOPMENT BRAND SUBMITTAL

11/20/23 60% DESIGN DEVELOPMENT BRAND RESUBMITTAL, WITHOUT INTERIOR DESIGN

DATE: MAY 24, 2024

REVISION DESCRIPTION

01/17/23 30% BRAND SUBMITTAL

02/16/23 01 REVISED 30% DESIGN SUBMITTAL WITH REVISED OWNER DIRECTION

07/31/23 60% DESIGN DEVELOPMENT BRAND SUBMITTAL

11/20/23 60% DESIGN DEVELOPMENT BRAND RESUBMITTAL, WITHOUT INTERIOR DESIGN

DATE: MAY 24, 2024

REVISION DESCRIPTION

01/17/23 30% BRAND SUBMITTAL

02/16/23 01 REVISED 30% DESIGN SUBMITTAL WITH REVISED OWNER DIRECTION

07/31/23 60% DESIGN DEVELOPMENT BRAND SUBMITTAL

11/20/23 60% DESIGN DEVELOPMENT BRAND RESUBMITTAL, WITHOUT INTERIOR DESIGN

DATE: MAY 24, 2024

REVISION DESCRIPTION

01/17/23 30% BRAND SUBMITTAL

02/16/23 01 REVISED 30% DESIGN SUBMITTAL WITH REVISED OWNER DIRECTION

07/31/23 60% DESIGN DEVELOPMENT BRAND SUBMITTAL

11/20/23 60% DESIGN DEVELOPMENT BRAND RESUBMITTAL, WITHOUT INTERIOR DESIGN

DATE: MAY 24, 2024

REVISION DESCRIPTION

01/17/23 30% BRAND SUBMITTAL

02/16/23 01 REVISED 30% DESIGN SUBMITTAL WITH REVISED OWNER DIRECTION

07/31/23 60% DESIGN DEVELOPMENT BRAND SUBMITTAL

11/20/23 60% DESIGN DEVELOPMENT BRAND RESUBMITTAL, WITHOUT INTERIOR DESIGN

DATE: MAY 24, 2024

REVISION DESCRIPTION

01/17/23 30% BRAND SUBMITTAL

02/16/23 01 REVISED 30% DESIGN SUBMITTAL WITH REVISED OWNER DIRECTION

07/31/23 60% DESIGN DEVELOPMENT BRAND SUBMITTAL

11/20/23 60% DESIGN DEVELOPMENT BRAND RESUBMITTAL, WITHOUT INTERIOR DESIGN

DATE: MAY 24, 2024

REVISION DESCRIPTION

01/17/23 30% BRAND SUBMITTAL

02/16/23 01 REVISED 30% DESIGN SUBMITTAL WITH REVISED OWNER DIRECTION

07/31/23 60% DESIGN DEVELOPMENT BRAND SUBMITTAL

11/20/23 60% DESIGN DEVELOPMENT BRAND RESUBMITTAL, WITHOUT INTERIOR DESIGN

DATE: MAY 24, 2024

REVISION DESCRIPTION

01/17/23 30% BRAND SUBMITTAL

02/16/23 01 REVISED 30% DESIGN SUBMITTAL WITH REVISED OWNER DIRECTION

07/31/23 60% DESIGN DEVELOPMENT BRAND SUBMITTAL

11/20/23 60% DESIGN DEVELOPMENT BRAND RESUBMITTAL, WITHOUT INTERIOR DESIGN

DATE: MAY 24, 2024

REVISION DESCRIPTION

01/17/23 30% BRAND SUBMITTAL

02/16/23 01 REVISED 30% DESIGN SUBMITTAL WITH REVISED OWNER DIRECTION

07/31/23 60% DESIGN DEVELOPMENT BRAND SUBMITTAL

11/20/23 60% DESIGN DEVELOPMENT BRAND RESUBMITTAL, WITHOUT INTERIOR DESIGN

DATE: MAY 24, 2024

REVISION DESCRIPTION

01/17/23 30% BRAND SUBMITTAL

02/16/23 01 REVISED 30% DESIGN SUBMITTAL WITH REVISED OWNER DIRECTION

07/31/23 60% DESIGN DEVELOPMENT BRAND SUBMITTAL

11/20/23 60% DESIGN DEVELOPMENT BRAND RESUBMITTAL, WITHOUT INTERIOR DESIGN

DATE: MAY 24, 2024

REVISION DESCRIPTION

01/17/23 30% BRAND SUBMITTAL

02/16/23 01 REVISED 30% DESIGN SUBMITTAL WITH REVISED OWNER DIRECTION

07/31/23 60% DESIGN DEVELOPMENT BRAND SUBMITTAL

11/20/23 60% DESIGN DEVELOPMENT BRAND RESUBMITTAL, WITHOUT INTERIOR DESIGN

DATE: MAY 24, 2024

REVISION DESCRIPTION

01/17/23 30% BRAND SUBMITTAL

02/16/23 01 REVISED 30% DESIGN SUBMITTAL WITH REVISED OWNER DIRECTION

07/31/23 60% DESIGN DEVELOPMENT BRAND SUBMITTAL

11/20/23 60% DESIGN DEVELOPMENT BRAND RESUBMITTAL, WITHOUT INTERIOR DESIGN

DATE: MAY 24, 2024

REVISION DESCRIPTION

01/17/23 30% BRAND SUBMITTAL

02/16/23 01 REVISED 30% DESIGN SUBMITTAL WITH REVISED OWNER DIRECTION

07/31/23 60% DESIGN DEVELOPMENT BRAND SUBMITTAL

11/20/23 60% DESIGN DEVELOPMENT BRAND RESUBMITTAL, WITHOUT INTERIOR DESIGN

DATE: MAY 24, 2024

REVISION DESCRIPTION

01/17/23 30% BRAND SUBMITTAL

02/16/23 01 REVISED 30% DESIGN SUBMITTAL WITH REVISED OWNER DIRECTION

07/31/23 60% DESIGN DEVELOPMENT BRAND SUBMITTAL

11/20/23 60% DESIGN DEVELOPMENT BRAND RESUBMITTAL, WITHOUT INTERIOR DESIGN

DATE: MAY 24, 2024

REVISION DESCRIPTION

01/17/23 30% BRAND SUBMITTAL

02/16/23 01 REVISED 30% DESIGN SUBMITTAL WITH REVISED OWNER DIRECTION

07/31/23 60% DESIGN DEVELOPMENT BRAND SUBMITTAL

11/20/23 60% DESIGN DEVELOPMENT BRAND RESUBMITTAL, WITHOUT INTERIOR DESIGN

DATE: MAY 24, 2024

REVISION DESCRIPTION

01/17/23 30% BRAND SUBMITTAL

02/16/23 01 REVISED 30% DESIGN SUBMITTAL WITH REVISED OWNER DIRECTION

07/31/23 60% DESIGN DEVELOPMENT BRAND SUBMITTAL

11/20/23 60% DESIGN DEVELOPMENT BRAND RESUBMITTAL, WITHOUT INTERIOR DESIGN

DATE: MAY 24, 2024

REVISION DESCRIPTION

01/17/23 30% BRAND SUBMITTAL

02/16/23 01 REVISED 30% DESIGN SUBMITTAL WITH REVISED OWNER DIRECTION

07/31/23 60% DESIGN DEVELOPMENT BRAND SUBMITTAL

11/20/23 60% DESIGN DEVELOPMENT BRAND RESUBMITTAL, WITHOUT INTERIOR DESIGN

DATE: MAY 24, 2024

REVISION DESCRIPTION

01/17/23 30% BRAND SUBMITTAL

02/16/23 01 REVISED 30% DESIGN SUBMITTAL WITH REVISED OWNER DIRECTION

07/31/23 60% DESIGN DEVELOPMENT BRAND SUBMITTAL

11/20/23 60% DESIGN DEVELOPMENT BRAND RESUBMITTAL, WITHOUT INTERIOR DESIGN

DATE: MAY 24, 2024

REVISION DESCRIPTION

01/17/23 30% BRAND SUBMITTAL

02/16/23 01 REVISED 30% DESIGN SUBMITTAL WITH REVISED OWNER DIRECTION

07/31/23 60% DESIGN DEVELOPMENT BRAND SUBMITTAL

11/20/23 60% DESIGN DEVELOPMENT BRAND RESUBMITTAL, WITHOUT INTERIOR DESIGN

DATE: MAY 24, 2024

REVISION DESCRIPTION

01/17/23 30% BRAND SUBMITTAL

02/16/23 01 REVISED 30% DESIGN SUBMITTAL WITH REVISED OWNER DIRECTION

07/31/23 60% DESIGN DEVELOPMENT BRAND SUBMITTAL

11/20/23 60% DESIGN DEVELOPMENT BRAND RESUBMITTAL, WITHOUT INTERIOR DESIGN

DATE: MAY 24, 2024

REVISION DESCRIPTION

01/17/23 30% BRAND SUBMITTAL

02/16/23 01 REVISED 30% DESIGN SUBMITTAL WITH REVISED OWNER DIRECTION

07/31/23 60% DESIGN DEVELOPMENT BRAND SUBMITTAL

11/20/23 60% DESIGN DEVELOPMENT BRAND RESUBMITTAL, WITHOUT INTERIOR DESIGN

DATE: MAY 24, 2024

REVISION DESCRIPTION

01/17/23 30% BRAND SUBMITTAL

02/16/23 01 REVISED 30% DESIGN SUBMITTAL WITH REVISED OWNER DIRECTION

07/31/23 60% DESIGN DEVELOPMENT BRAND SUBMITTAL

11/20/23 60% DESIGN DEVELOPMENT BRAND RESUBMITTAL, WITHOUT INTERIOR DESIGN

DATE: MAY 24, 2024

REVISION DESCRIPTION

01/17/23 30% BRAND SUBMITTAL

02/16/23 01 REVISED 30% DESIGN SUBMITTAL WITH REVISED OWNER DIRECTION

07/31/23 60% DESIGN DEVELOPMENT BRAND SUBMITTAL

11/20/23 60% DESIGN DEVELOPMENT BRAND RESUBMITTAL, WITHOUT INTERIOR DESIGN

DATE: MAY 24, 2024

REVISION DESCRIPTION