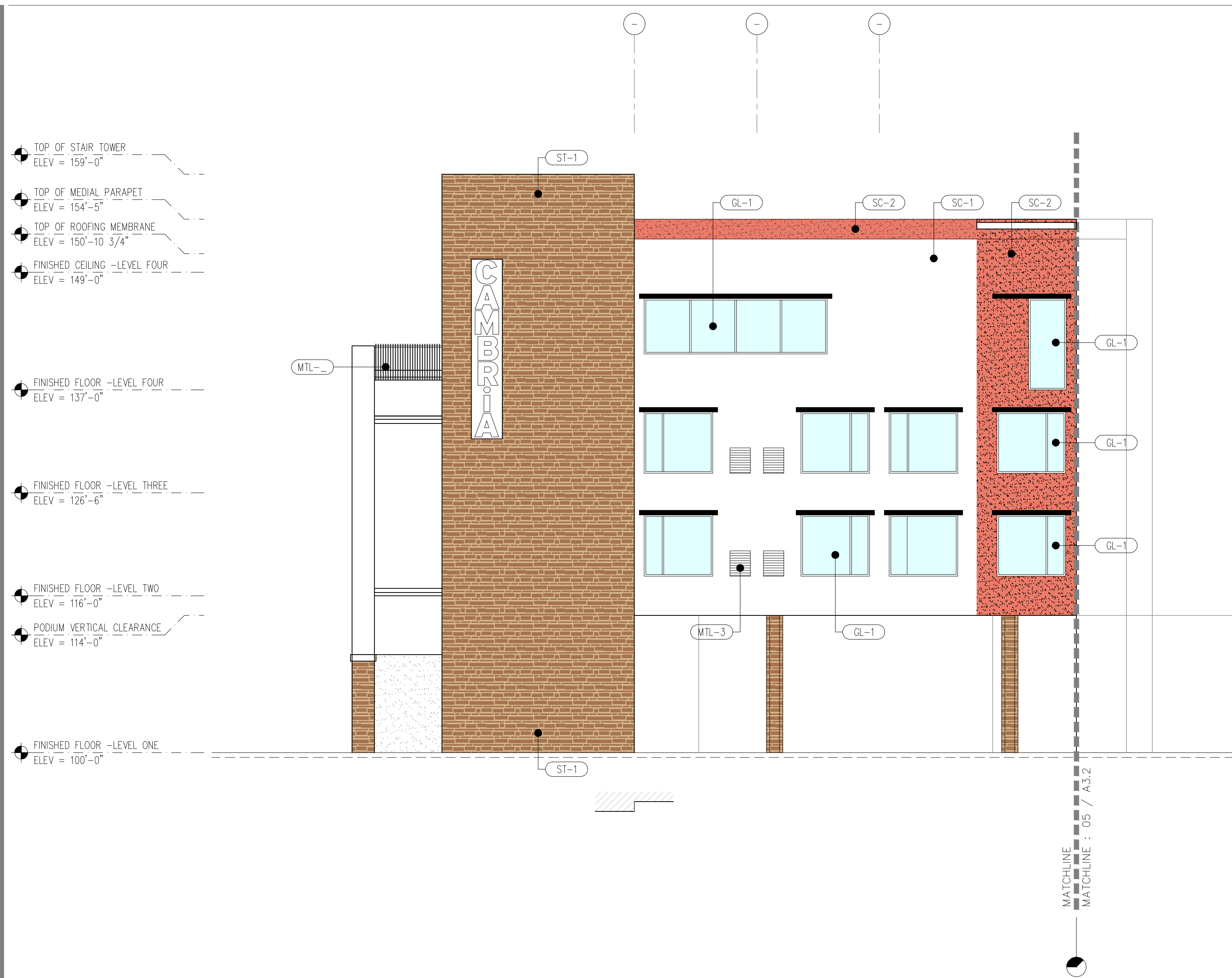


The architect has been advised by the City that this information is for informational use only and is not to be used for any other purpose.



04 EXTERIOR ELEVATION
WEST FACADE - LEG
SCALE: 1/8" = 1'-0"



05 EXTERIOR ELEVATION
WEST FACADE
SCALE: 1/8" = 1'-0"



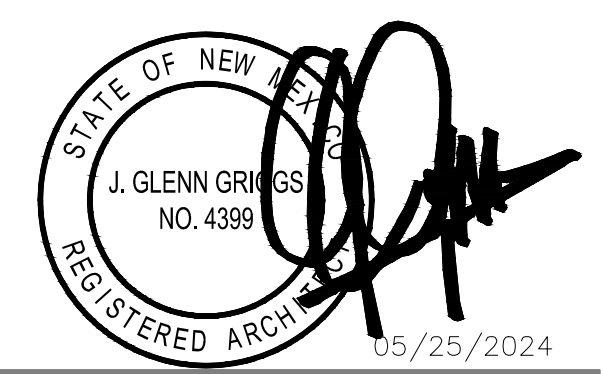
06 EXTERIOR ELEVATION
WEST FACADE
SCALE: 1/8" = 1'-0"

PER IDO SECTION 5-11(E)(2)(b)
WINDOWS ON UPPER FLOORS SHALL BE RECESSED NOT LESS THAN 2".



hospitality
design
management

DALLAS TX 75201
www.g2group.com



SEAL CONSULTANT LOGO

SEAL CONSULTANT SEAL

CAMBRIA
hotels
DEVELOPED BY
GATEHOUSE CAPITAL
FOR ALVARADO HOTELS

2026 CENTRAL AVENUE
ALBUQUERQUE, NM
APPLICATION #: SI-2024-00597

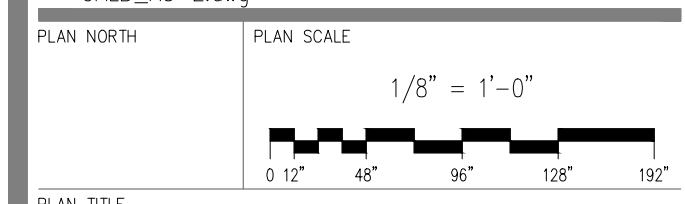
SITE DEVELOPMENT
SUBMITTAL

MAY 24, 2024

DATE (Y/M/D)	REVISION DESCRIPTION
01/17/23	30% BRAND SUBMITTAL
02/16/23	01 REVISED 30% DESIGN SUBMITTAL WITH REVISED OWNER DIRECTION
07/31/23	60% DESIGN DEVELOPMENT BRAND SUBMITTAL
11/20/23	60% DESIGN DEVELOPMENT BRAND RESUBMITTAL, WITHOUT INTERIOR DESIGN

ELECTRONIC NOT DATE STAMP
Tuesday, June 11, 2024 7:12:24 AM

ELECTRONIC FLSM STAMP
CALB_A3-2.dwg



EXTERIOR ELEVATIONS

PLAN NUMBER
A3.2

© 2024 - G2 Group, Inc. All rights reserved. Project: Cambria Hotels, Dallas, TX. Date: 05/24/24