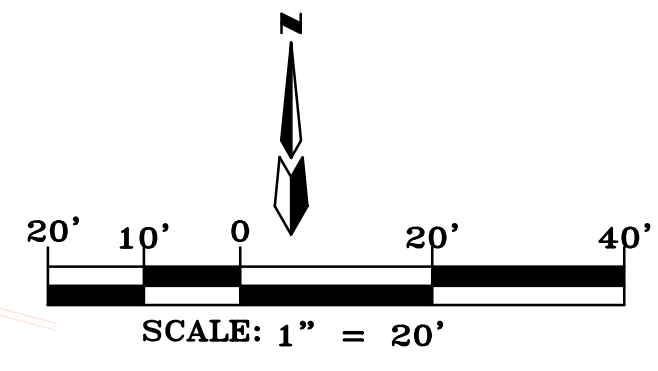
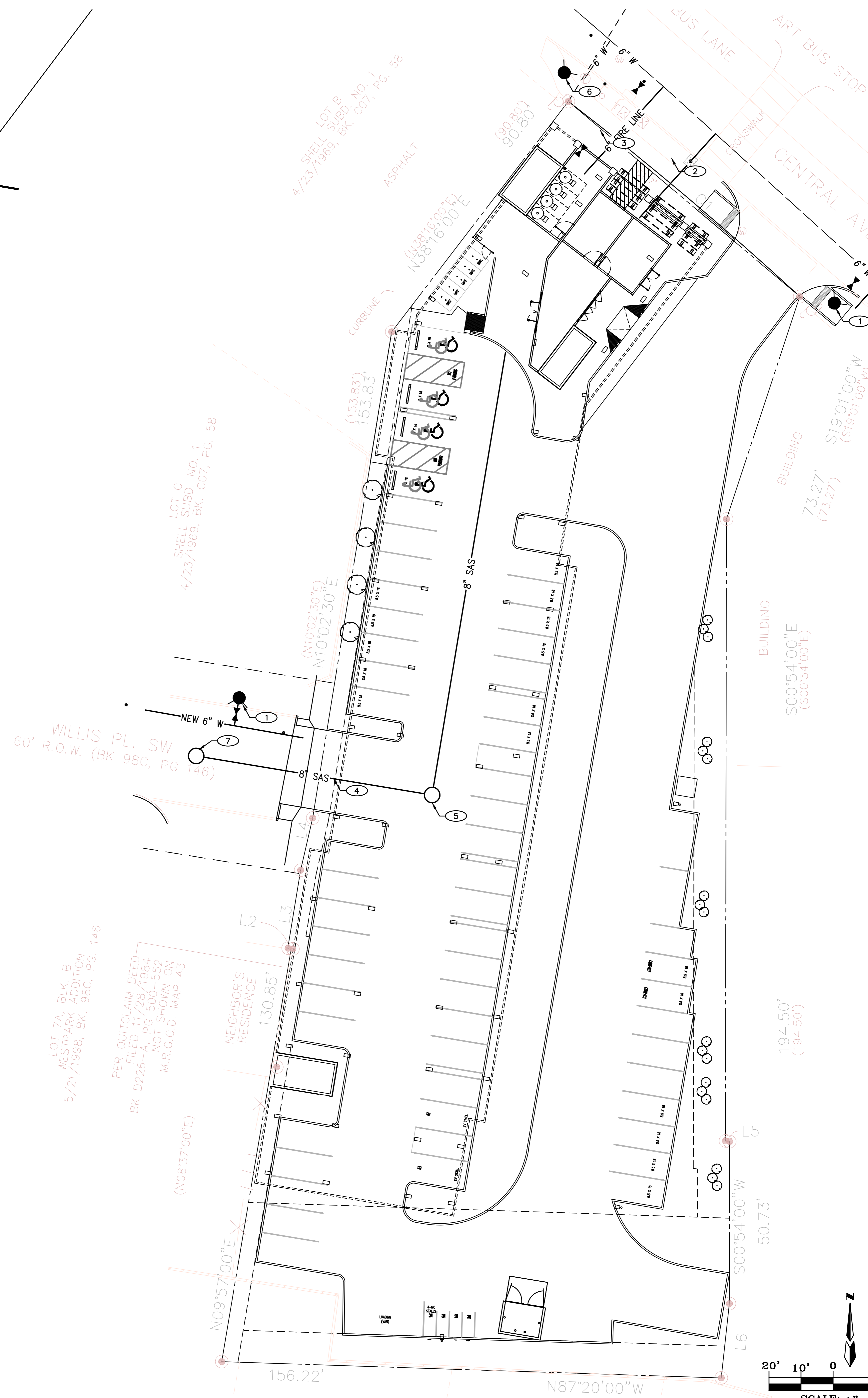


60' ROW



KEYED NOTES

1. NEW PUBLIC FIRE HYDRANT
2. NEW PRIVATE 2" WATER SERVICE
3. NEW PRIVATE 6" FIRE LINE
4. NEW PRIVATE 8" SAS SERVICE
5. NEW PRIVATE 4' MANHOLE
6. EXISTING PUBLIC FIRE HYDRANT
7. EXISTING PUBLIC MANHOLE

GENERAL NOTES:

1. COORDINATION WITH WATER AUTHORITY CROSS CONNECTION SECTION WILL BE REQUIRED TO ENSURE PROPER BACKFLOW CONTAINMENT IS IN PLACE PRIOR TO RELEASE OF METER FOR THE SITE. CONTACT THE CROSS CONNECTION SECTION AT 505-289-3454.
2. COORDINATION WITH THE WATER AUTHORITY PRE-TREATMENT ENGINEER IS REQUIRED TO ENSURE THE SITE COMPLIES WITH WATER AUTHORITY SEWER USE ORDINANCE. CONTACT THE PRE-TREATMENT ENGINEER AT 505-289-3439.

LEGEND

- FIRE HYDRANT
- WATER VALVE
- EX SAS MANHOLE
- PROP SAS MANHOLE
- # SAS PROPOSED SANITARY SEWER
- SAS EX SANITARY SEWER
- # W PROPOSED WATER LINE
- # W EX WATER LINE



1. THIS SET OF DRAWINGS EXIST AS A WHOLE. IF THE SOLE CONTRACTOR INVOLVED IN THE PROJECT HAS ANY QUESTIONS REGARDING THE DRAWINGS, CONTACT THE PROFESSIONAL ENGINEER TO OBTAIN CLARIFICATION. 2. DUE TO POTENTIAL INCONSISTENCIES BETWEEN PLAN AND ELEVATION DRAWINGS, THE CONTRACTOR SHALL VERIFY ALL DIMENSIONS FIELD RECOMMENDED.

PROJECT ADDRESS:
**2026 CENTRAL AVE. S.W.
 ALBUQUERQUE, NM**

CLIENT'S NAME:

PROJECT NAME:
CONCEPTUAL UTILITY PLAN

PROJECT NAME:
CAMBRIA HOTEL

PROJECT NUMBER:

PROJECT PROGRESS:
PERMIT

DRAWN BY:
REH

CHECKED BY: / APPROVED BY:
REH / REH

DATE:
MAY 31, 23

SCALE:
AS NOTED

SHEET:
U1