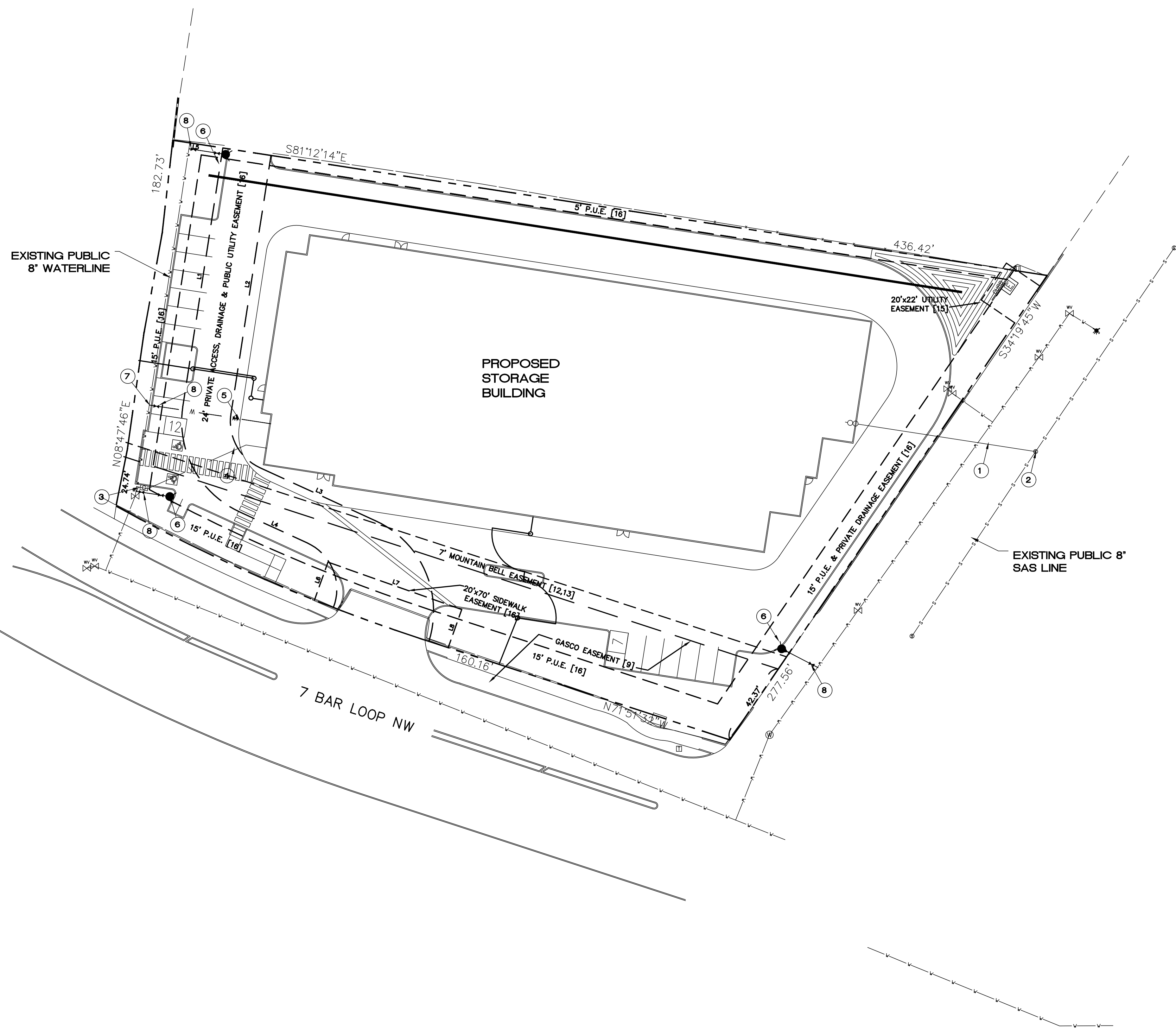


\\TWNASVZ_Drive\2024\2024014_Storage_Facility_1.9_Acres\dwg_DRB\2024014_MUB.dwg Oct. 02, 2024 - 10:37am



LEGEND

- CURB & GUTTER
- BOUNDARY LINE
- - - EASEMENT
- RIGHT-OF-WAY
- BUILDING
- SIDEWALK
- SCREEN WALL
- RETAINING WALL
- - - EXISTING CURB & GUTTER
- - - EXISTING BOUNDARY LINE
- 36" SD — STORM SEWER LINE
- PUBLIC SANITARY SEWER LINE
- PRIVATE SANITARY SEWER LINE
- WATERLINE
- FIRE LINE
- o SINGLE CLEAN OUT
- ∞ DOUBLE CLEAN OUT
- ⊕ EXISTING SD MANHOLE
- ⊕ EXISTING INLET
- ⊕ EXISTING SAS MANHOLE
- ⊕ EXISTING FIRE HYDRANT
- ⊕ EXISTING WATER VALVE
- ⊕ EXISTING WATER METER
- EXISTING POWER POLE
- ⊕ EXISTING GAS VALVE
- EX. UG — EXISTING UNDERGROUND UTILITIES
- - - EX. 2" GAS — EXISTING GAS
- - - EX. 8" SAS — EXISTING SANITARY SEWER LINE
- - - EX. 10" WL — EXISTING WATER LINE
- - - EX. 18" RCP — EXISTING STORM SEWER LINE

KEYED NOTES

- 1 PRIVATE 4" SAS SERVICE LINE AT 2% SLOPE INSTALL CLEAN OUTS PER UPC
- 2 CONNECT TO EXISTING PUBLIC SAS MANHOLE PER APPROVED ABCWUA UTILITY CONNECTION PERMIT.
- 3 15" WATER SERVICE LINE AND METER BOX PER ABCWUA. 15" HOT TAP AT 6" WATER MAIN.
- 4 PRIVATE 15" DOMESTIC WATER LINE
- 5 PRIVATE 6" FIRE LINE WITH 6" GATE VALVE.
- 6 PRIVATE FIRE HYDRANT PAINTED ORANGE CONNECT WITH 6" FIRE LINE AND PRIVATE 6" GATE VALVE
- 7 CONNECT TO EXISTING 8" WATER MAIN 6"x8" TEE CONNECTION
- 8 PUBLIC 6" GATE VALVE PER ABCWUA STD DWG 2326

GENERAL UTILITY NOTES:

- ALL WATER AND SEWER UTILITY WORK TO BE DONE IN ACCORDANCE WITH THE ALBUQUERQUE BERNALILLO COUNTY WATER UTILITY AUTHORITY, 2019.
1. REFERENCE ARCHITECTURAL PLANS FOR WATER LINE RISER LOCATIONS.
 2. CLEAN OUTS ARE TO BE BUILT PER UNIFORM PLUMBING CODE STANDARDS.
 3. ALL PLUMBING PIPE MATERIAL TO BE USED PER UPC.
 4. IRRIGATION AND DOMESTIC WATERLINE MUST HAVE BACKFLOW PREVENTORS PER UPC. IF BACKFLOW PREVENTOR IS INSTALLED EXTERIOR OF BUILDING A HOT BOX SHALL BE INSTALLED AND USED.
 5. ALL EXCAVATION, TRENCHING AND SHORING ACTIVITIES MUST BE CARRIED-OUT IN ACCORDANCE WITH OSHA 29 CFR 1926.650 SUBPART P.
 6. ALL UTILITY DISTANCES SHOWN ARE FOR REFERENCE ONLY. CALL 811 FOR PUBLIC UTILITIES LOCATES.
 7. PNM WILL REVIEW ALL TECHNICAL NEEDS, ISSUES AND SAFETY CLEARANCES FOR ITS ELECTRIC POWER SYSTEMS. ANY EXISTING AND PROPOSED PUBLIC UTILITY EASEMENTS SHALL BE INDICATED ON THE SITE PLAN UTILITY SHEET PRIOR TO DRB REVIEW. PNM'S STANDARD FOR PUBLIC UTILITY EASEMENTS IS 10 FEET IN WIDTH TO ENSURE ADEQUATE, SAFE CLEARANCES.

GENERAL UTILITY NOTES:

1. CONTRACTOR MUST COORDINATE WATER SYSTEM WITH SEWER SYSTEM TO PREVENT ANY CONFLICTS WHERE THESE LINES INTERSECT ONE ANOTHER.
2. PROVIDE 3 FEET OF COVER MINIMUM FOR ALL PROPOSED WATER LINES.
3. AREAS WHERE WATER PIPES CROSS OVER SEWER PIPES SHALL NOT HAVE ANY JOINTS.
4. NO FENCES, SIGNS, TREES OR ROCKWALLS TO BE PLACED WITHIN UTILITY EASEMENTS.
5. CONTACT UTILITY COMPANIES FOR EXACT LOCATION OF UNDERGROUND UTILITIES IN THIS AREA BEFORE EXCAVATION.
6. INSTALL A TRENCH SAFETY SYSTEM TO PROVIDE FOR THE SAFE EXCAVATION OF ALL TRENCHES EXCEEDING A DEPTH OF (5') FEET AS PER O.S.H.A. STANDARDS.
7. PROVIDE ADEQUATE CONCRETE THRUST BLOCKING AT THE FOLLOWING: TAPPING SLEEVES, TEES, BENDS, PLUGS AND ALL FITTINGS. REFER TO ABCWUA STANDARD DETAIL DRAWING 2320
8. P.V.C. PIPE SHALL BE PLACED WITH SELECT BEDDING MATERIAL ALL AROUND.
9. CAUTION: VERIFY LOCATION & DEPTH OF EXISTING GAS MAIN IN THE AREA OF CONSTRUCTION, BEFORE INSTALLING WATER LINE.
10. CONTRACTOR TO ADJUST WATER VALVES TO FINAL GRADE WHERE NECESSARY.

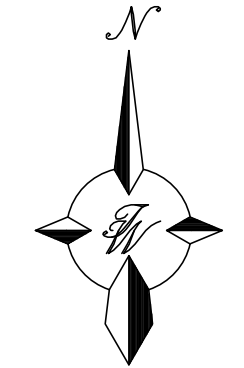
ABCWUA NOTES:

COORDINATION WITH WATER AUTHORITY CROSS CONNECTION SECTION WILL BE REQUIRED TO ENSURE PROPER BACKFLOW CONTAINMENT IS IN PLACE PRIOR TO RELEASE OF METER FOR THE SITE. CONTACT THE CROSS CONNECTION SECTION AT 505-289-3454.

COORDINATION WITH THE WATER AUTHORITY PRE-TREATMENT ENGINEER IS REQUIRED TO ENSURE THE SITE COMPLIES WITH WATER AUTHORITY SEWER USE ORDINANCE. CONTACT THE PRE-TREATMENT ENGINEER AT 505-289-3439.

EASEMENTS, MAINTENANCE RESPONSIBILITIES AND NOTES, AS SHOWN, NOTED AND PROVIDED FOR ON THE PLAT RECORDED JANUARY 10, 2006 IN PLAT BOOK 2006C, PAGE 9.

ALL PUBLIC INFRASTRUCTURE SHALL BE CONSTRUCTED WITH A CONNECTION PERMIT THROUGH THE WATER AUTHORITY



GRAPHIC SCALE



CAUTION:

ALL EXISTING UTILITIES SHOWN WERE OBTAINED FROM RESEARCH, AS-BUILTS, SURVEYS OR INFORMATION PROVIDED BY OTHERS. IT SHALL BE THE SOLE RESPONSIBILITY OF THE CONTRACTOR TO CONDUCT ALL NECESSARY FIELD INVESTIGATIONS PRIOR TO AND INCLUDING ANY EXCAVATION, TO DETERMINE THE ACTUAL LOCATION OF UTILITIES AND OTHER IMPROVEMENTS, PRIOR TO STARTING THE WORK. ANY CHANGES FROM THIS PLAN SHALL BE COORDINATED WITH AND APPROVED BY THE ENGINEER.

PRELIMINARY NOT FOR CONSTRUCTION		
ENGINEER'S SEAL 	STORAGE FACILITY 7 BAR LOOP, ALBUQUERQUE, NM	DRAWN BY BF
	UTILITY PLAN	DATE 10/02/2024
 10/02/2024 RONALD R. BOHANNAN P.E. #7868	 TIERRA WEST, LLC 5571 MIDWAY PARK PLACE NE ALBUQUERQUE, NM 87109 (505) 858-3100 www.tierrawestllc.com	2024014_MUB
		SHEET # MU-1
		JOB # 2024014