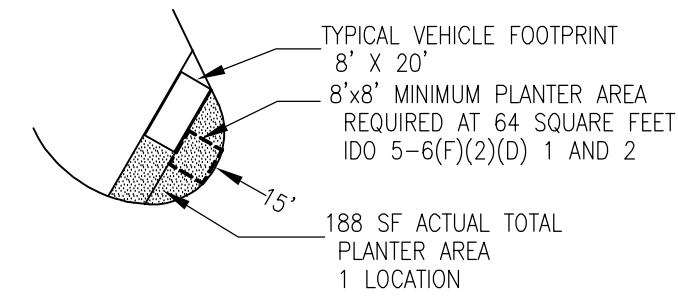


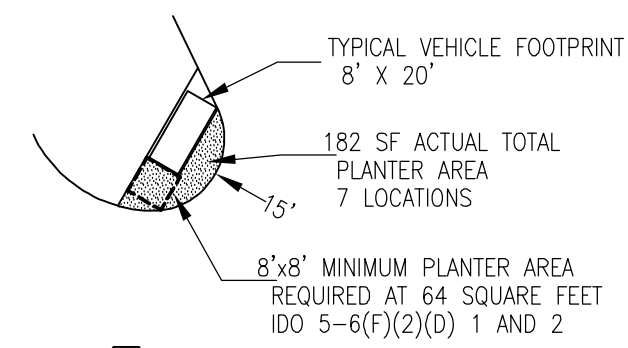
**LANDSCAPED AREAS LEGEND**

LED AREA LIGHTING ON 25' TALL POLE  
 11 INSTALLED IN DISPLAY AREAS

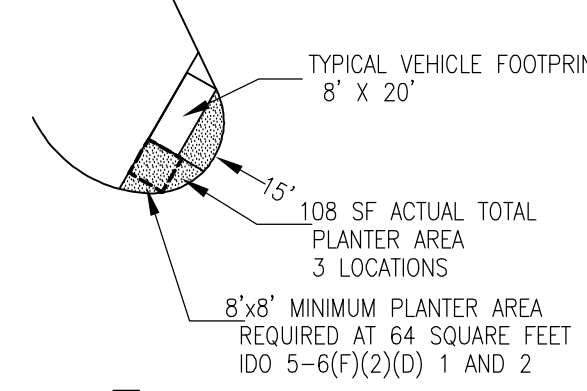
**POLE MOUNTED AREA LIGHTING**



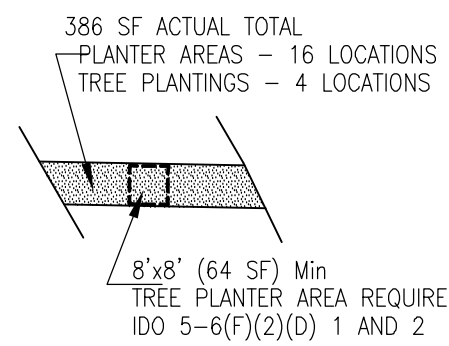
TYPE ① - PARKING AISLE LANDSCAPE ISLAND 188 SF PLANTING AREA



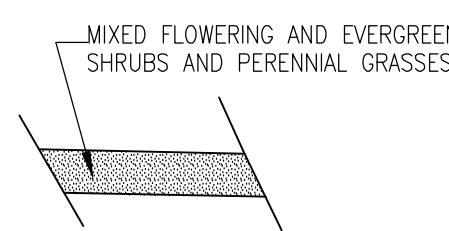
TYPE ② - PARKING AISLE LANDSCAPE ISLAND 1,274 SF PLANTING AREA



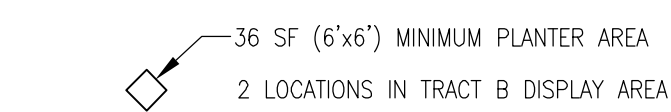
TYPE ③ - PARKING AISLE LANDSCAPE ISLAND 324 SF PLANTING AREA



TYPE ④ - INTERIOR LANDSCAPE PLANTERS 6,176 SF PLANTING AREA



TYPE ⑤ - LOT 5 PERIMETER PLANTING BEDS 2,172 SF PLANTING AREA



TYPE ⑥ - INTERIOR TREE PLANTERS 72 SF PLANTING AREA  
 INTERIOR PLANTER LANDSCAPING 10,206 SF TOTAL AREA

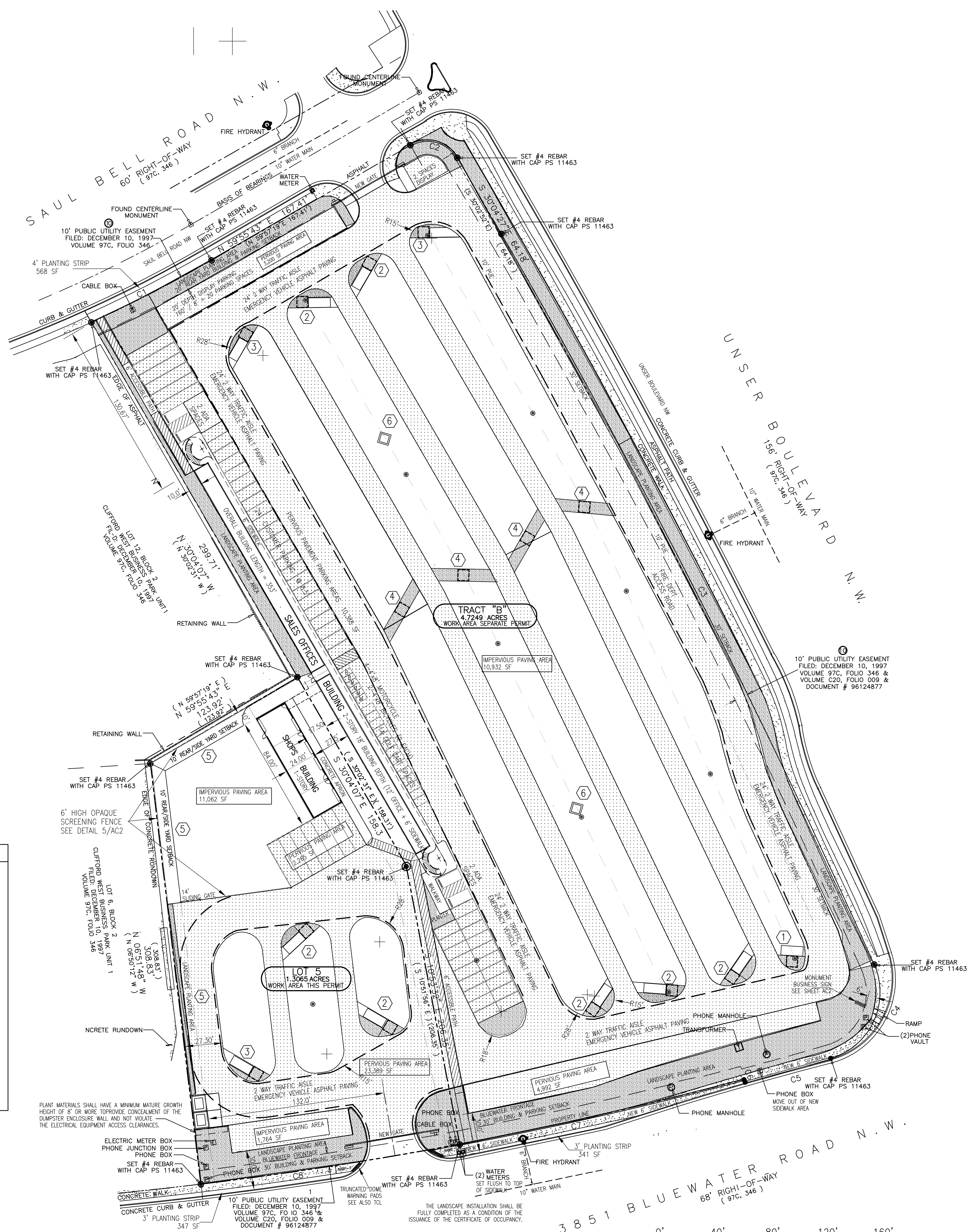
**PAVEMENT AREAS LEGEND**

**PARKING AND TRAFFIC PAVEMENTS**

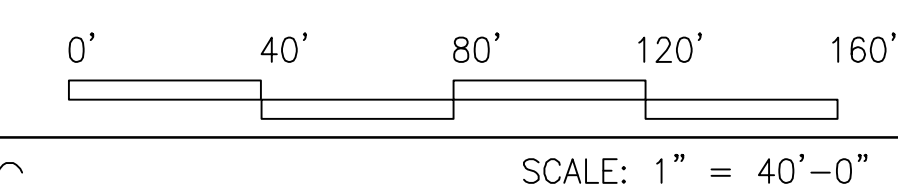
	IMPERVIOUS ASPHALT PAVING	104,089 SF
	PARKING AREAS PERVIOUS PAVING	105,264 SF
<b>TOTAL PAVING AREAS</b>		<b>210,528 SF</b>

**LANDSCAPED AREAS**

SEE ALSO LANDSCAPE PLAN



**1 PAVING PLAN**  
 AC3 BASED ON THE USE OF PERVIOUS PAVING



**MASTERWORKS ARCHITECTS, INC**  
 1809 ILLINOIS ST NE 242-1866  
 ALBUQUERQUE, NEW MEXICO 87110

©MWA, Inc 2023

FILE # 2317G-SITE  
 23 FEB 2025

*James B. Clark*  
 JAMES BENJAMIN CLARK III  
 1047  
 REGISTERED ARCHITECT

CONSTRUCTION OF A NEW FACILITY FOR  
**D&B U-SELL-IT**  
 8531 BLUEWATER ST.  
 ALBUQUERQUE, NM 87121

PAVING LAYOUT PLAN  
 PARKING LOT PLANTER AREAS

**AC3**

Project No. PR-2024-010446  
 Application No. SI-2024-00774