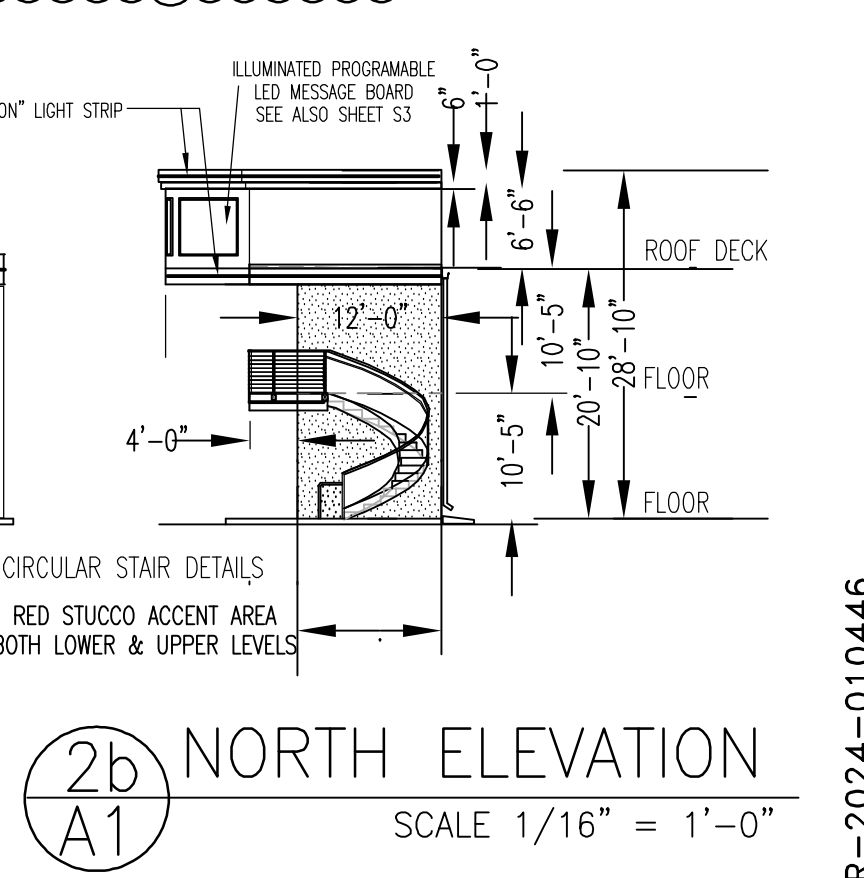
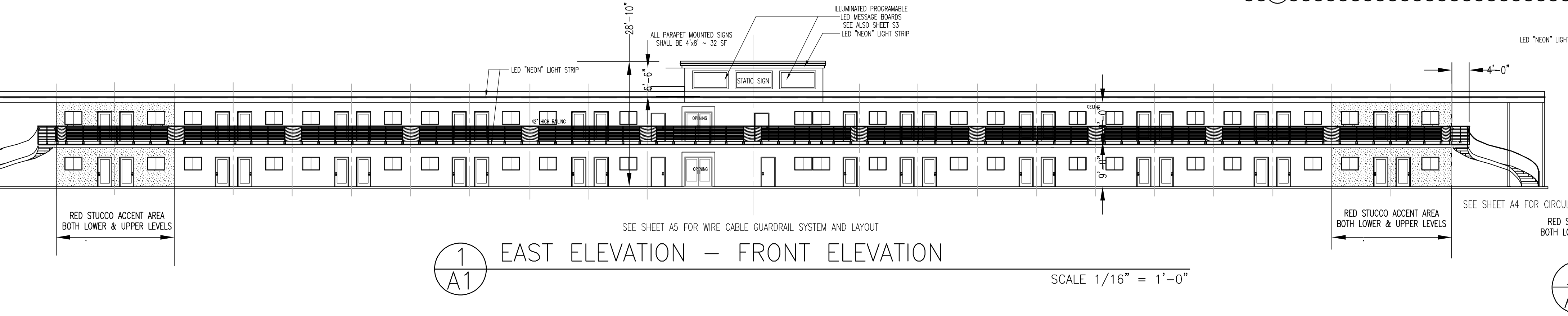
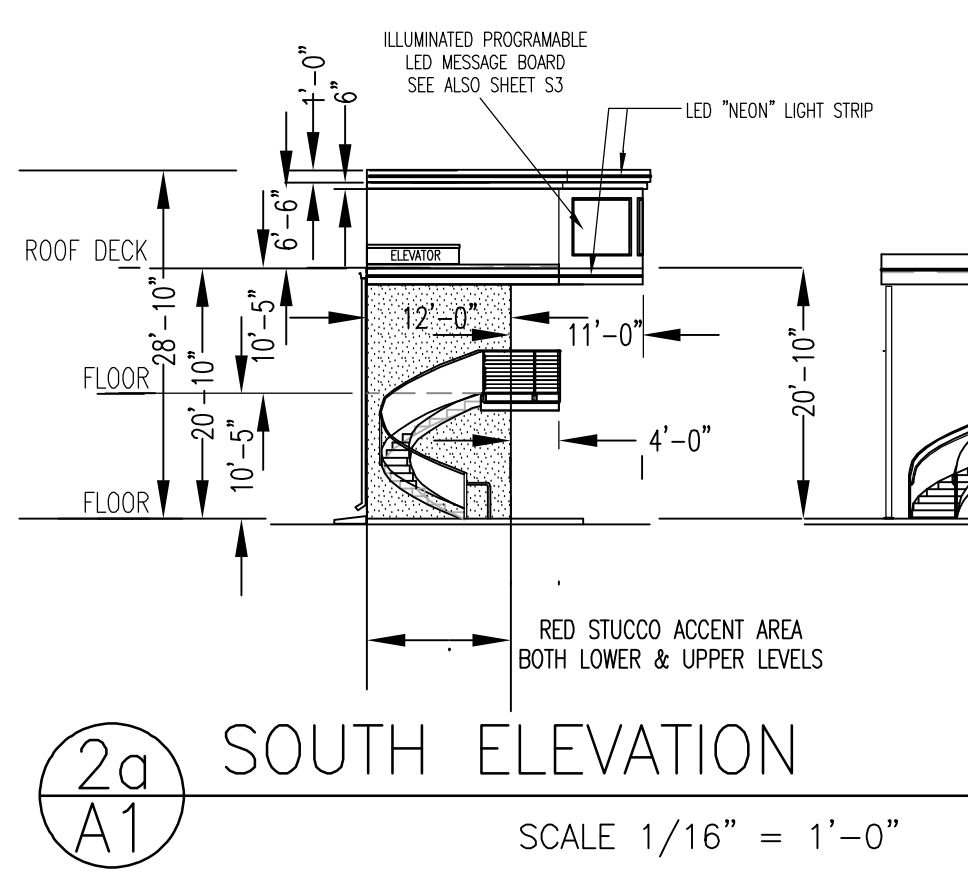


DECORATIVE LIGHTING ACCENT
 LED "NEON" LIGHT STRIP, EXTERIOR GRADE, IP65 TOP BENDABLE SINGLE COLOR "WHITE" 6000K, 120° LIGHT ANGLE SURFACE MOUNT WITH RETAINER CLIPS, 24 VOLT @ 4.3 WATTS/FT

EXTERIOR FINISHES
 EAST (Front) WALL - STUCCO, Color TAN with RED ACCENTS
 NORTH And SOUTH (End) WALLS - STUCCO, Color RED
 WEST (Rear) WALL - PREFINISHED METAL SIDING, Color TAN
 ROOF & BALCONY FASCIA - PREFINISHED METAL, Color RED
 SERVICE EQUIP, GUTTERS DOWNSPOUTS, FLASHINGS, ETC. - PAINT TO MATCH WALL



MASTERWORKS ARCHITECTS, INC
 1809 ILLINOIS ST NE 242-1866
 ALBUQUERQUE, NEW MEXICO 87110
 © MWA, Inc 2023

FILE # 2317G ARCH
 3 JAN 2024
 JAMES BENJAMIN CLARK III
 1047
 REGISTERED ARCHITECT

CONSTRUCTION OF NEW FACILITY FOR
D&B U-SELL-IT
 401 UNSER BLVD NW
 ALBUQUERQUE, NM 87121

OFFICE BUILDING
 FLOOR PLANS
 EXTERIOR ELEVATIONS
A1

Project No. PR-2024-010446
 Application No. SI-2024-00774