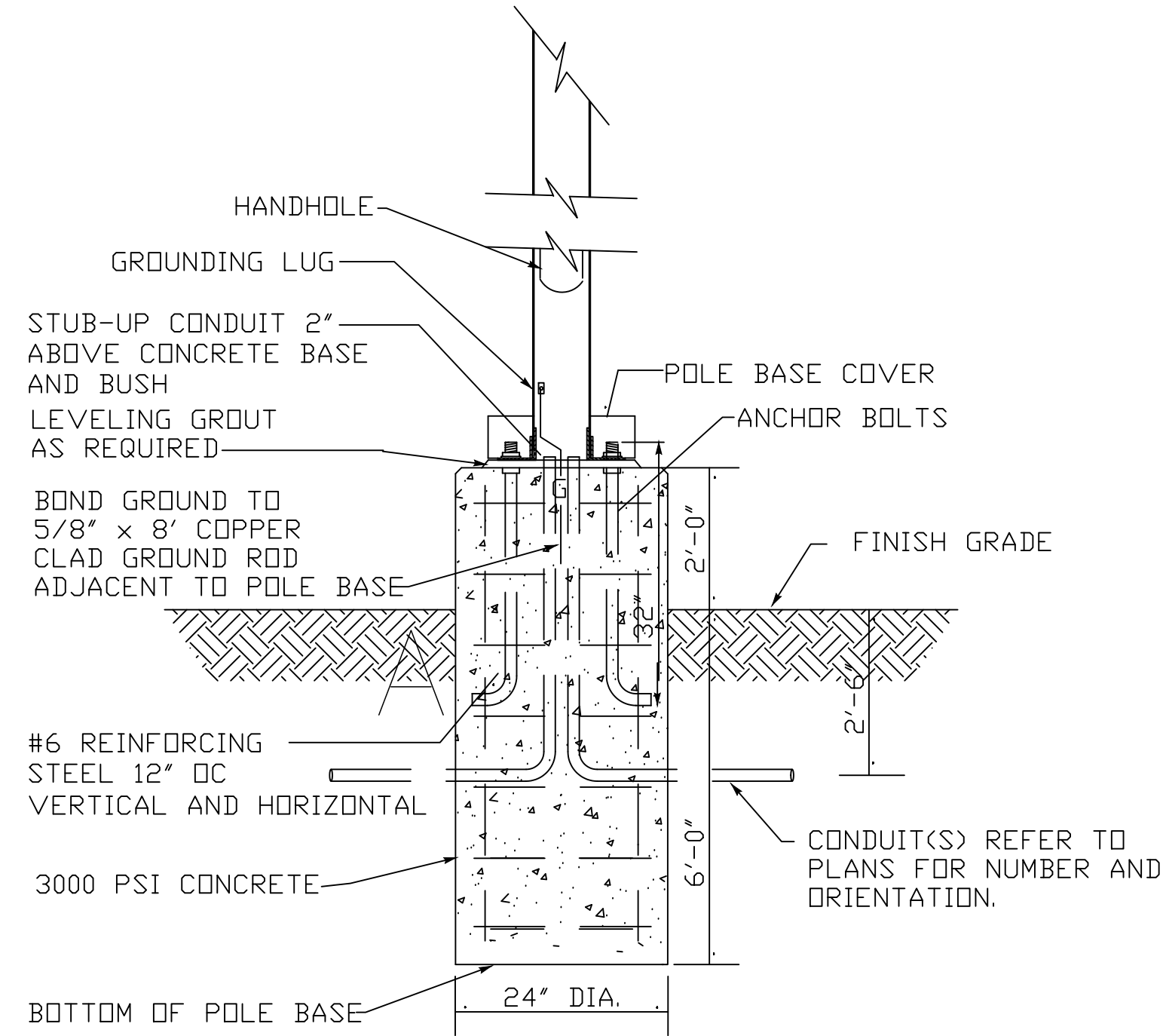


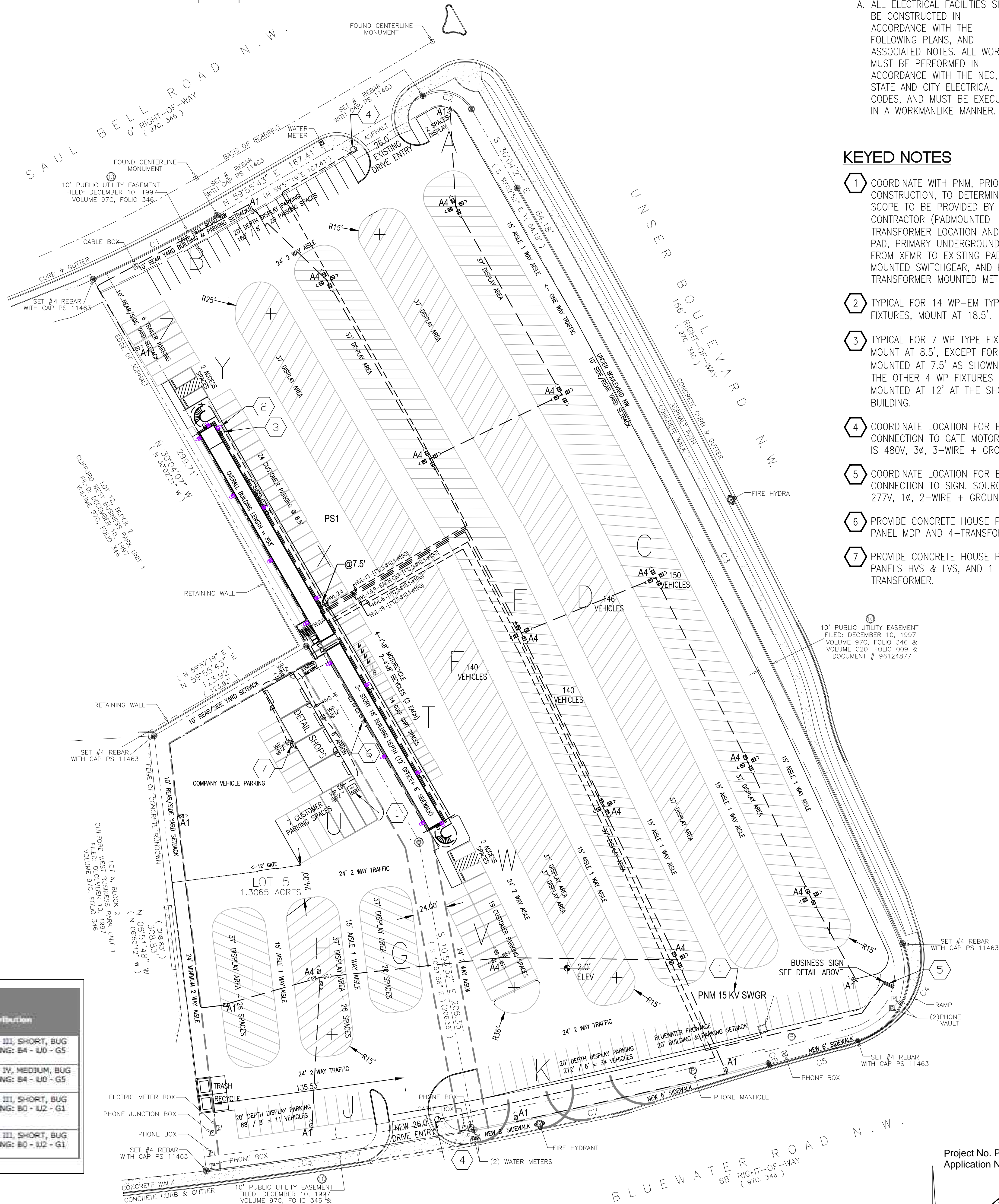
C405.4.2 Exterior lighting power allowance. Use Zone 2 (0.2 W/sq. ft.), Outdoor Sales, Open areas (including vehicle sales lots). Total exterior lighting power = 17,881 Watts. Total exterior sq. ft = Lot 5 (56,911 sq. ft) + Tract B (205,817 sq. ft) = 262,728.  $17881/262,728 = 0.07$  W/sq. ft., which is less than the 0.2 W/sq. ft. allowance.



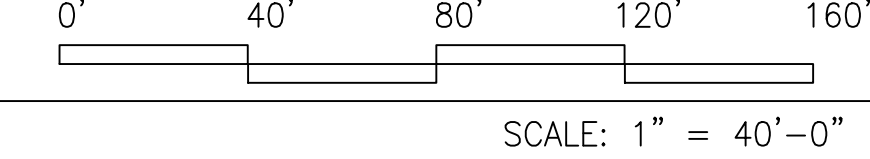
POLE BASE DETAIL (25')  
NTS

Type	Qty	Division	Catalog #
A1	9	AMER	ATB2 P905 MVOLT R3 BZ
A1 POLE	9	AMER	SSS 25 55C D01 W5 BZ FSTXXX FSTXXX, HZ 12IN 1A BOW SQT BZ, (2)FGIUS BZ, AB-26-4 RFD341254
A4	48	AMER	ATB2 P605 MVOLT R4 BZ
A4 POLE	12	AMER	SSS 25 55C D04 W5 BZ FSTXXX FSTXXX, (4)HZ 12IN 1A BOW SQT BZ, (2)FGIUS BZ, AB-26-4 RFD341253
WP-EM	10	HOLO	WCNG P1 40K T3M MVOLT ZT 10KV BZSDP LTCH NPR ELSW
WP	15	HOLO	WCNG P1 40K T3M MVOLT ZT 10KV BZSDP LTCH NPR

Symbol	Label	Quantity	Manufacturer	Catalog Number	Description	Number Lamps	Lumens Per Lamp	Lumen Multiplier	Light Loss Factor	Wattage	Distribution
	A1	9	American Electric Lighting	ATB2 P905 R3 4K	Autobahn Large P905 Package Roadway Type III 4000K/5000K CCT	1	53937	1	0.9	369	TYPE III, SHORT, BUG RATING: B4 - UJ - G5
	A4	12	American Electric Lighting	ATB2 P605 R4 4K	Autobahn Large P605 Package Roadway Type IV 4000K/5000K CCT	1	36796	1	0.9	1180	TYPE IV, MEDIUM, BUG RATING: B4 - UJ - G5
	WP-EM	10	Holophane	WCNG P1 40K T3M	WCNG P1 Performance Package 4000K CCT Type III(Emergency Battery Pack Mode)	1	2194	0.91	0.9	15.99	TYPE III, SHORT, BUG RATING: B0 - UJZ - G1
	WP	15	Holophane	WCNG P1 40K T3M	WCNG P1 Performance Package 4000K CCT Type III	1	2194	1	0.9	15.99	TYPE III, SHORT, BUG RATING: B0 - UJZ - G1



1 ELECTRICAL SITE PLAN



GENERAL NOTES

A. ALL ELECTRICAL FACILITIES SHALL BE CONSTRUCTED IN ACCORDANCE WITH THE FOLLOWING PLANS, AND ASSOCIATED NOTES. ALL WORK MUST BE PERFORMED IN ACCORDANCE WITH THE NEC, STATE AND CITY ELECTRICAL CODES, AND MUST BE EXECUTED IN A WORKMANLIKE MANNER.

KEYED NOTES

- COORDINATE WITH PNM, PRIOR TO ANY CONSTRUCTION, TO DETERMINE WORK SCOPE TO BE PROVIDED BY THE CONTRACTOR (PADMOUNTED TRANSFORMER LOCATION AND XFMR PAD, PRIMARY UNDERGROUND CONDUIT FROM XFMR TO EXISTING PAD MOUNTED SWITCHGEAR, AND PROPOSED TRANSFORMER MOUNTED METER.
- TYPICAL FOR 14 WP-EM TYPE FIXTURES, MOUNT AT 18.5'.
- TYPICAL FOR 7 WP TYPE FIXTURES, MOUNT AT 8.5', EXCEPT FOR 1 MOUNTED AT 7.5' AS SHOWN. NOTE: THE OTHER 4 WP FIXTURES ARE MOUNTED AT 12' AT THE SHOP BUILDING.
- COORDINATE LOCATION FOR ELECTRICAL CONNECTION TO GATE MOTOR. SOURCE IS 480V, 3Ø, 3-WIRE + GROUND.
- COORDINATE LOCATION FOR ELECTRICAL CONNECTION TO SIGN. SOURCE IS 277V, 1Ø, 2-WIRE + GROUND.
- PROVIDE CONCRETE HOUSE PAD FOR PANEL MDP AND 4-TRANSFORMERS.
- PROVIDE CONCRETE HOUSE PAD FOR PANELS HVS & LVS, AND 1 - TRANSFORMER.

MASTERWORKS ARCHITECTS, INC  
1809 ILLINOIS ST. NE 242-1866  
ALBUQUERQUE, NEW MEXICO 87110  
©MWA, Inc 2023

FILE # 2317G-SITE  
23 AUG 2023

D&B U-SELL-IT  
8531 BLUEWATER RD NW  
ALBUQUERQUE, NM 87121

ELECTRICAL SITE PLAN  
ELECTRICAL SERVICE  
SITE AREA LIGHTING

Project No. PR-2024-010446  
Application No. SI-2024-00774

