

HIWAY HOTEL	NUMBER OF LEVEL	LOBBY	LOUNGE/ BREAKFAST /BAR	ADMIN	FITNESS	BOH/ KITCHEN/ STORAGE	GUEST ROOM AREA	HOTEL MODULES		KEYS PER LEVEL	PARKING GARAGE AREA	GROSS BUILDING AREA*
								DELUXE	SUITE			
LEVEL B1 (PARKING GARAGE)	1	227				417					20,485	940
LEVEL 1 (LOBBY)	1	1,385	2,489	693	994	3,244	8,879	27	2	29		21,949
LEVEL 2 (HOTEL KEYS)	1					620	14,544	44	3	47		20,386
LEVEL 3 (HOTEL KEYS)	1	196	2,067			1,596	10,966	34	2	36		18,929
TOTAL	4	1,808	4,556	693	994	5,877	34,389	105	7	112	20,485	62,204
							%	94%	6%	100%	(*) gross building area does not include parking garage	

PARKING GARAGE - HOTEL	62
STREET PARKING - HOTEL	28
STREET PARKING - PUBLIC	40
TOTAL PARKING PROVIDED	130

1.16 space per keys



Central Avenue, S.E.

Bryn Mawr Road, S.E.

Wellesley Avenue, S.E.

16' Alley

BUILDING ABOVE

62 PARKING SPACES

11 STREET PARKING SPACES

RAMP DN. TO GARAGE
8%

RAMP DN. TO GARAGE
5%

MEP
417 SF

LOBBY
227 SF

LOT 12, BLOCK 2
MONTEVISTA
ADDITION
(01/20/1940,
C-183)

LOT 14 BLOCK
40,
UNIVERSITY
HEIGHTS
ADDITION
(02/07/1916,
D-27)

LOT 13
BLOCK
40,
UNIVERSITY
HEIGHTS
ADDITION
(02/07/1916,
D-27)

LOT 12
BLOCK
40,
UNIVERSITY
HEIGHTS
ADDITION
(02/07/1916,
D-27)

LOT 11
BLOCK
40,
UNIVERSITY
HEIGHTS
ADDITION
(02/07/1916,
D-27)

LOT 10
BLOCK
40,
UNIVERSITY
HEIGHTS
ADDITION
(02/07/1916,
D-27)

LOT 9
BLOCK
40,
UNIVERSITY
HEIGHTS
ADDITION
(02/07/1916,
D-27)

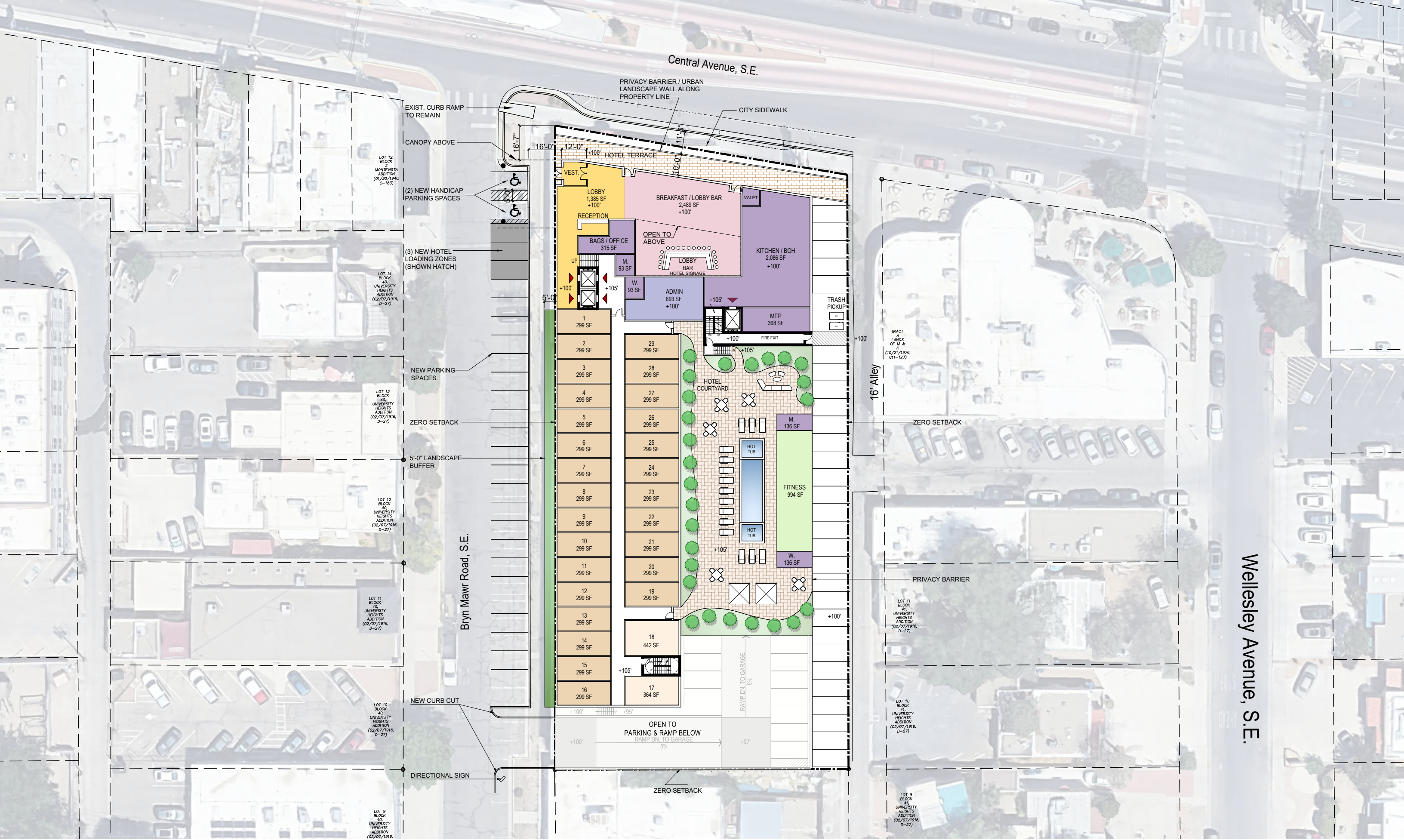
TRACT
LANDS
OF M &
(10/21/1976,
C11-123)

LOT 11
BLOCK
41,
UNIVERSITY
HEIGHTS
ADDITION
(02/07/1916,
D-27)

LOT 10
BLOCK
41,
UNIVERSITY
HEIGHTS
ADDITION
(02/07/1916,
D-27)

LOT 9
BLOCK
41,
UNIVERSITY
HEIGHTS
ADDITION
(02/07/1916,
D-27)



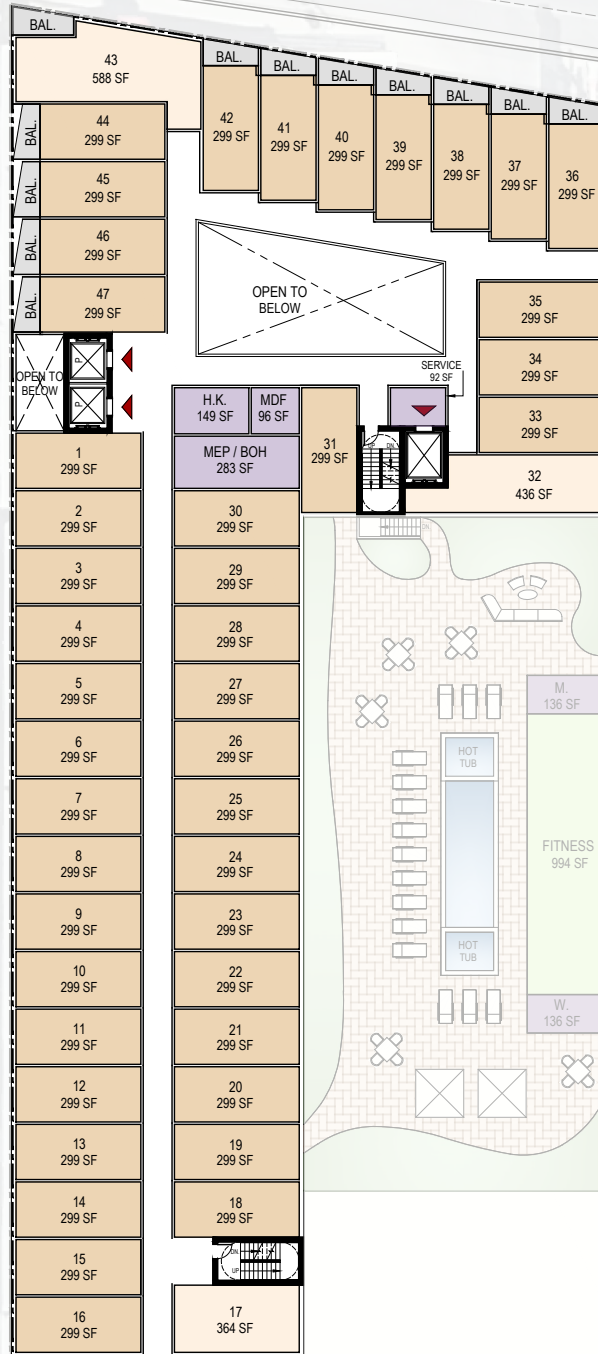


Central Avenue, S.E.

Bryn Mawr Road, S.E.

16' Alley

Wellesley Avenue, S.E.



LOT 12, BLOCK 2, MONTEVISTA ADDITION (01/20/1940, C-183)

LOT 14, BLOCK 40, UNIVERSITY HEIGHTS ADDITION (02/07/1916, D-27)

LOT 13, BLOCK 40, UNIVERSITY HEIGHTS ADDITION (02/07/1916, D-27)

LOT 12, BLOCK 40, UNIVERSITY HEIGHTS ADDITION (02/07/1916, D-27)

LOT 11, BLOCK 40, UNIVERSITY HEIGHTS ADDITION (02/07/1916, D-27)

LOT 10, BLOCK 40, UNIVERSITY HEIGHTS ADDITION (02/07/1916, D-27)

LOT 9, BLOCK 40, UNIVERSITY HEIGHTS ADDITION (02/07/1916, D-27)

TRACT LANDS OF W & (10/21/1976, C11-123)

LOT 11, BLOCK 40, UNIVERSITY HEIGHTS ADDITION (02/07/1916, D-27)

LOT 10, BLOCK 40, UNIVERSITY HEIGHTS ADDITION (02/07/1916, D-27)

LOT 9, BLOCK 40, UNIVERSITY HEIGHTS ADDITION (02/07/1916, D-27)

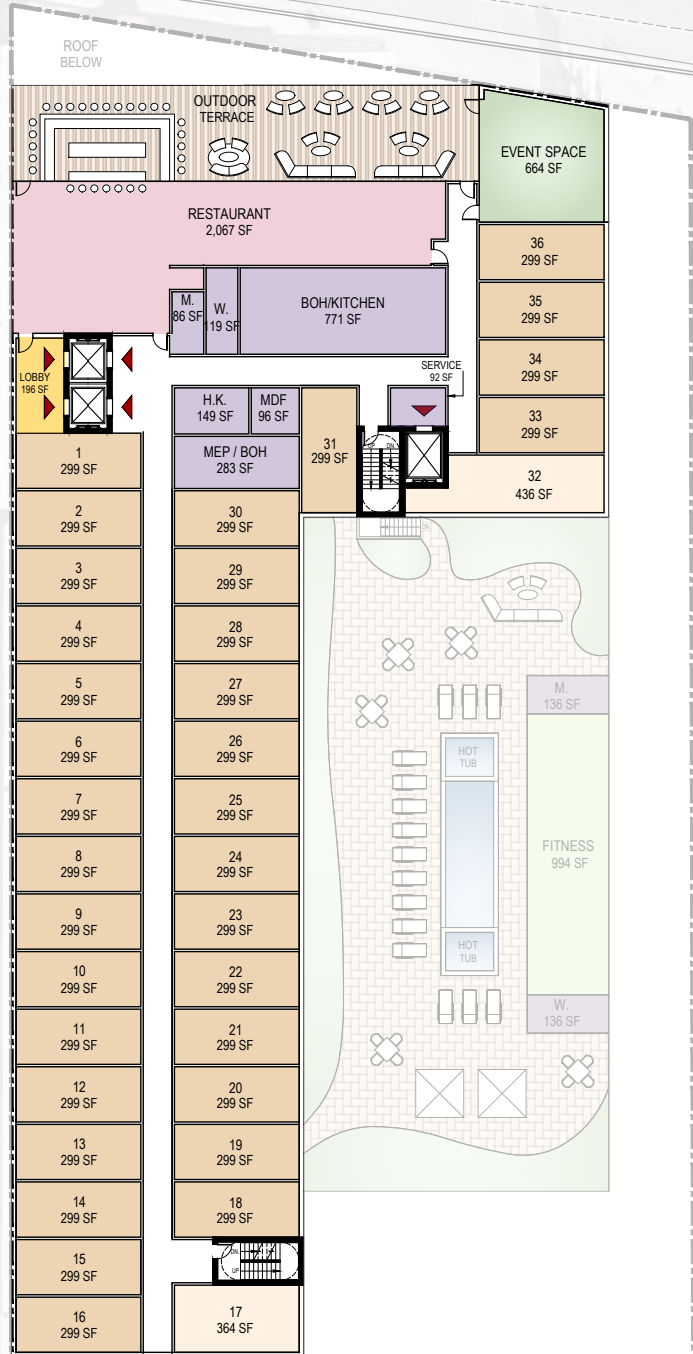


Central Avenue, S.E.

Bryn Mawr Road, S.E.

16' Alley

Wellesley Avenue, S.E.



LOT 12, BLOCK 2 MONTEVISTA ADDITION (01/20/1940, C-183)

LOT 14 BLOCK 40, UNIVERSITY HEIGHTS ADDITION (02/07/1916, D-27)

LOT 13 BLOCK 40, UNIVERSITY HEIGHTS ADDITION (02/07/1916, D-27)

LOT 12 BLOCK 40, UNIVERSITY HEIGHTS ADDITION (02/07/1916, D-27)

LOT 11 BLOCK 40, UNIVERSITY HEIGHTS ADDITION (02/07/1916, D-27)

LOT 10 BLOCK 40, UNIVERSITY HEIGHTS ADDITION (02/07/1916, D-27)

LOT 9 BLOCK 40, UNIVERSITY HEIGHTS ADDITION (02/07/1916, D-27)

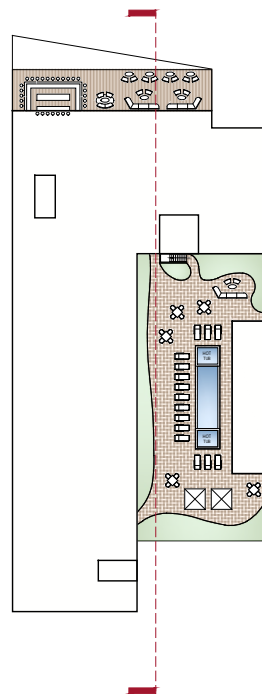
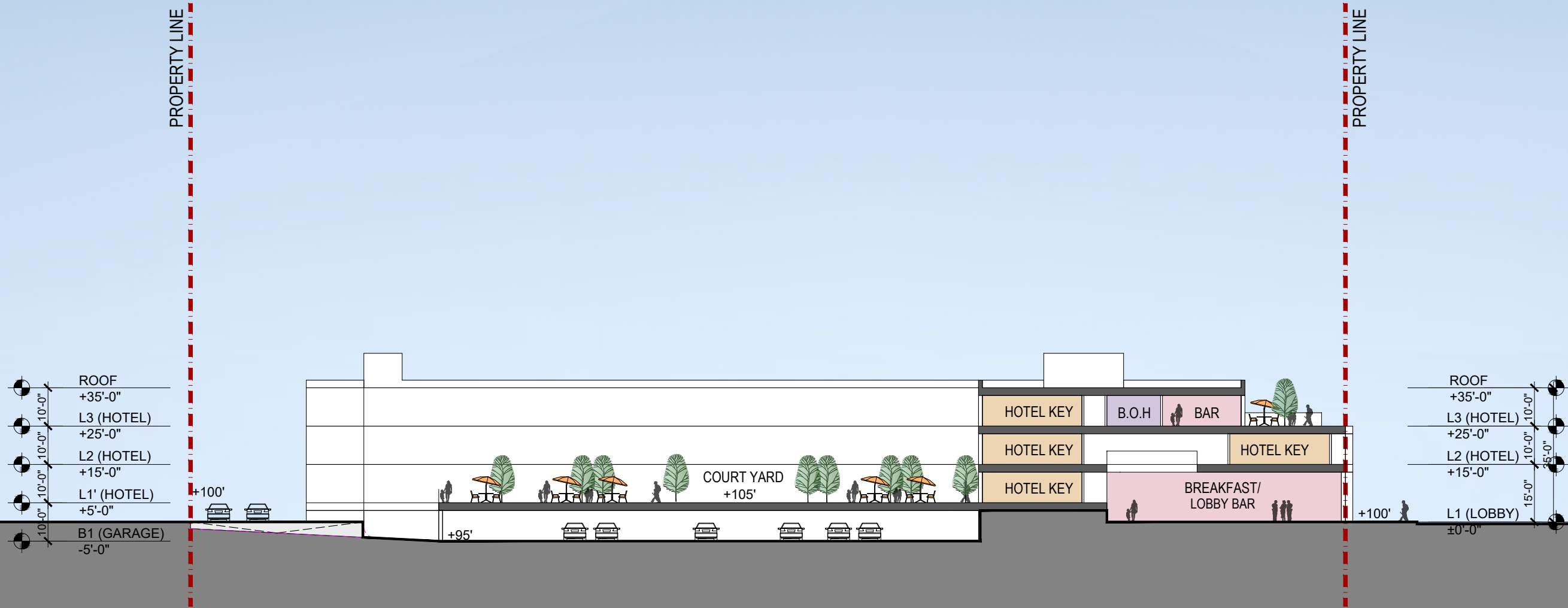
TRACT LANDS OF W & (10/21/1976, C11-123)

LOT 11 BLOCK 40, UNIVERSITY HEIGHTS ADDITION (02/07/1916, D-27)

LOT 10 BLOCK 40, UNIVERSITY HEIGHTS ADDITION (02/07/1916, D-27)

LOT 9 BLOCK 40, UNIVERSITY HEIGHTS ADDITION (02/07/1916, D-27)





SECTION