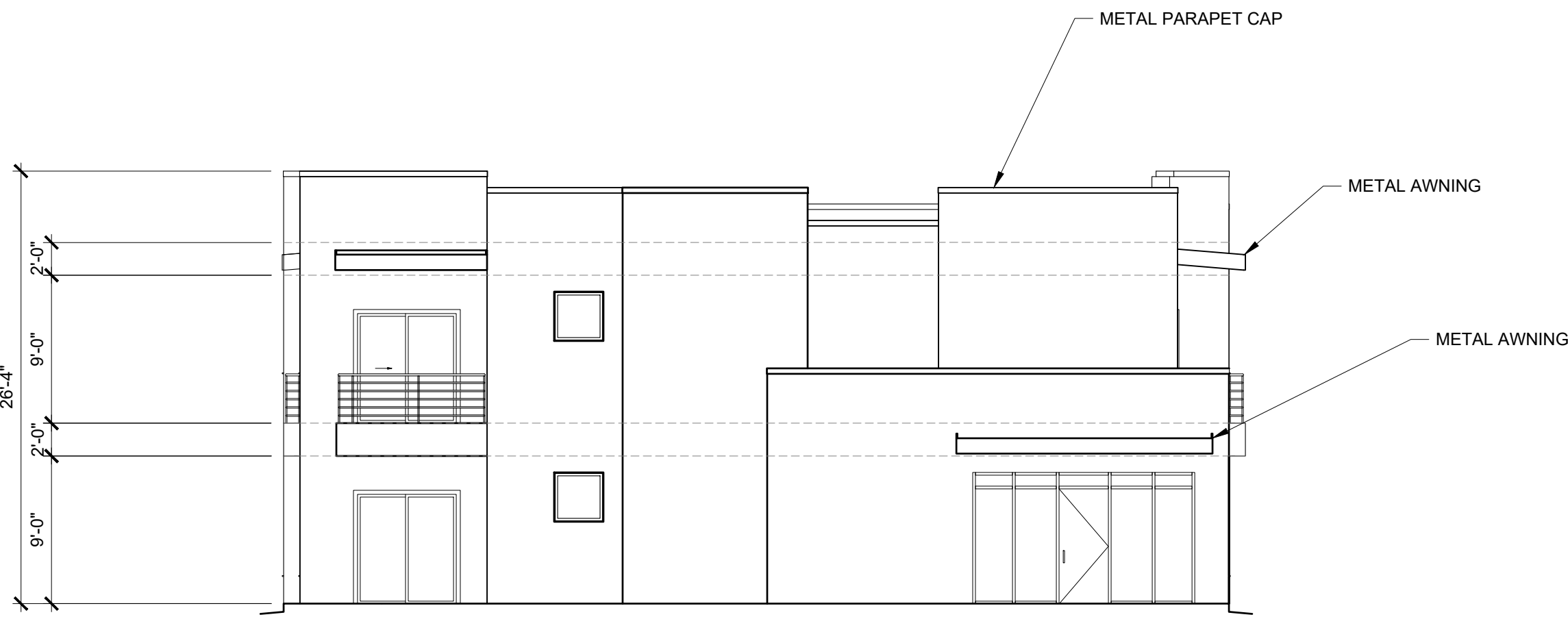




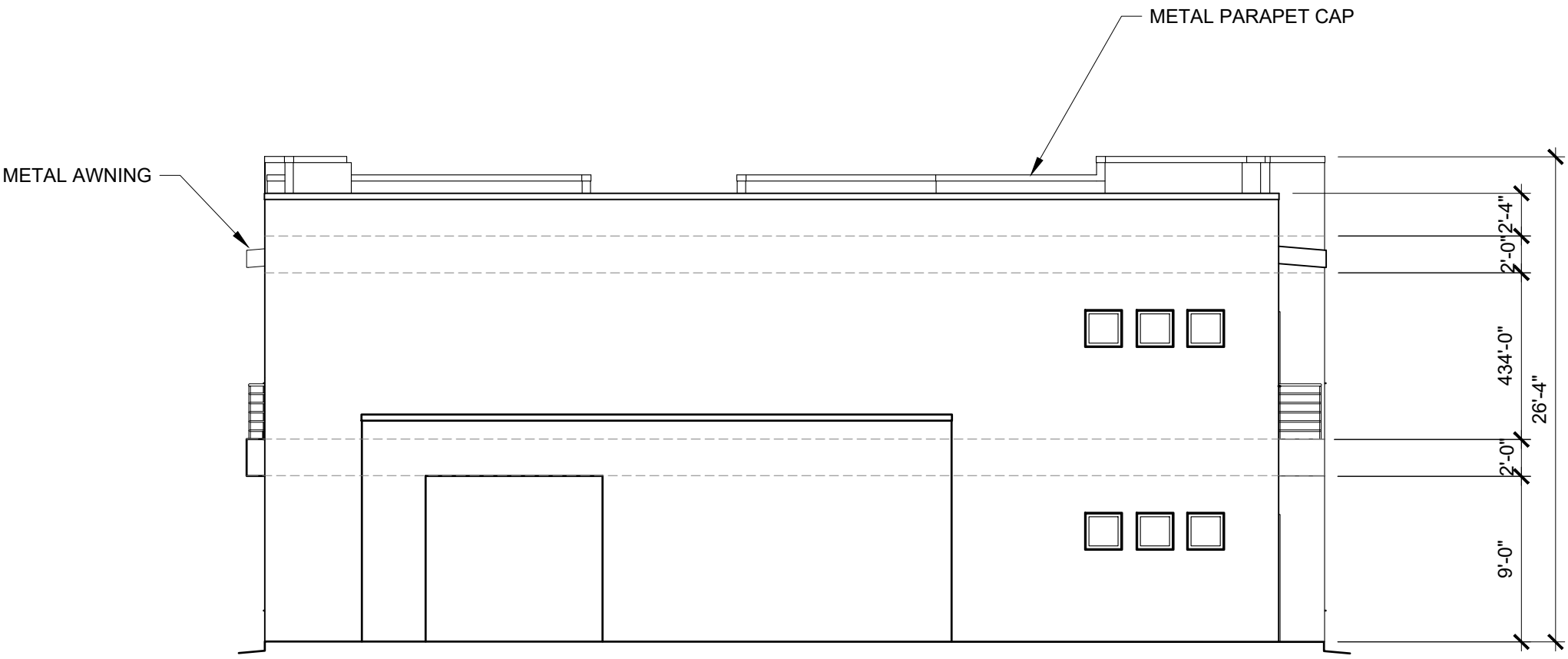
**SOUTH ELEVATION**

SCALE: 1/8" = 1'-0"



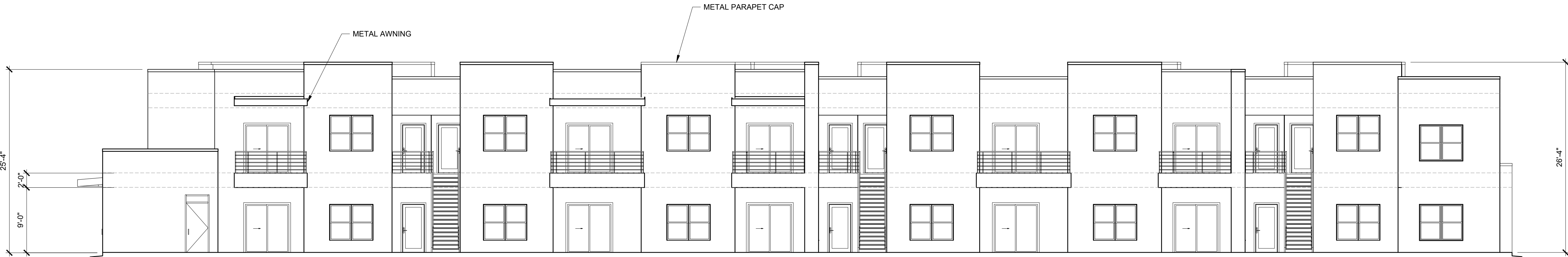
**EAST ELEVATION**

SCALE: 1/8" = 1'-0"



**WEST ELEVATION**

SCALE: 1/8" = 1'-0"



**NORTH ELEVATION**

SCALE: 1/8" = 1'-0"


- GENERAL NOTES:
- SUBMIT MANUFACTURER'S STANDARD COLOR CHART TO OWNER FOR THE SELECTION OF THE STUCCO COLOR.
  - STUCCO UNDERLAYMENT TO BE ONE PLY 15LBS, 20PSI, GRADE D. WEATHERLAP EDGES 4 INCHES MIN. ATTACH WITH LARGE HEAD PLASTIC WASHER HEAD SCREWS OR 1 INCH CROWN STAPLES.
  - INSTALL 17GA STUCCO NETTING OVER SHEATHING AND UNDERLAYMENT PROVIDING 1 INCH LAP AT ENDS.
  - APPLY TWO COAT PORTLAND CEMENT PLASTER IN ACCORDANCE WITH ASTM C926, MANUFACTURER'S INSTRUCTIONS, AND APPLICABLE CODES.
  - BROWN COAT TO BE APPLIED WITH A MIN 3/8 INCH THICKNESS WITH SUFFICIENT TROWEL PRESSURE TO KEY PLASTER INTO STUCCO MESH. ROD SURFACE TO A TRUE PLANE. EMBED FIBERGLASS REINFORCEMENT INTO WET BROWN COAT. FLOAT OR LIGHTLY BROOM TO PROVIDE FOR BOND WITH FINISH COAT.
  - MOIST CURE FIRST COAT WITH FOG SPRAY OF CLEAR WATER WITH FREQUENT APPLICATIONS TO MAINTAIN PLASTER MOISTURE FOR A MIN OF 48 HOURS FOLLOWING APPLICATION.
  - EXTERIOR FINISH COAT TO BE FACTORY MIXED, WATER BASED, ACRYLIC POLYMER COATING WITH GRADED AGGREGATE AND INTEGRAL COLOR. APPLY OVER CURED SCRATCH AND BROWN COATS TO A MIN 1/8 INCH THICKNESS. FINISH TEXTURE AND THICKNESS TO MATCH OWNER APPROVED SAMPLE.

No	Revision	Item	Date



**SCOTT C. ANDERSON**  
& associates architects  
2818 4th St NW, Suite C Albuquerque NM 87107  
scott@scarchitects.com  
505.401.7575

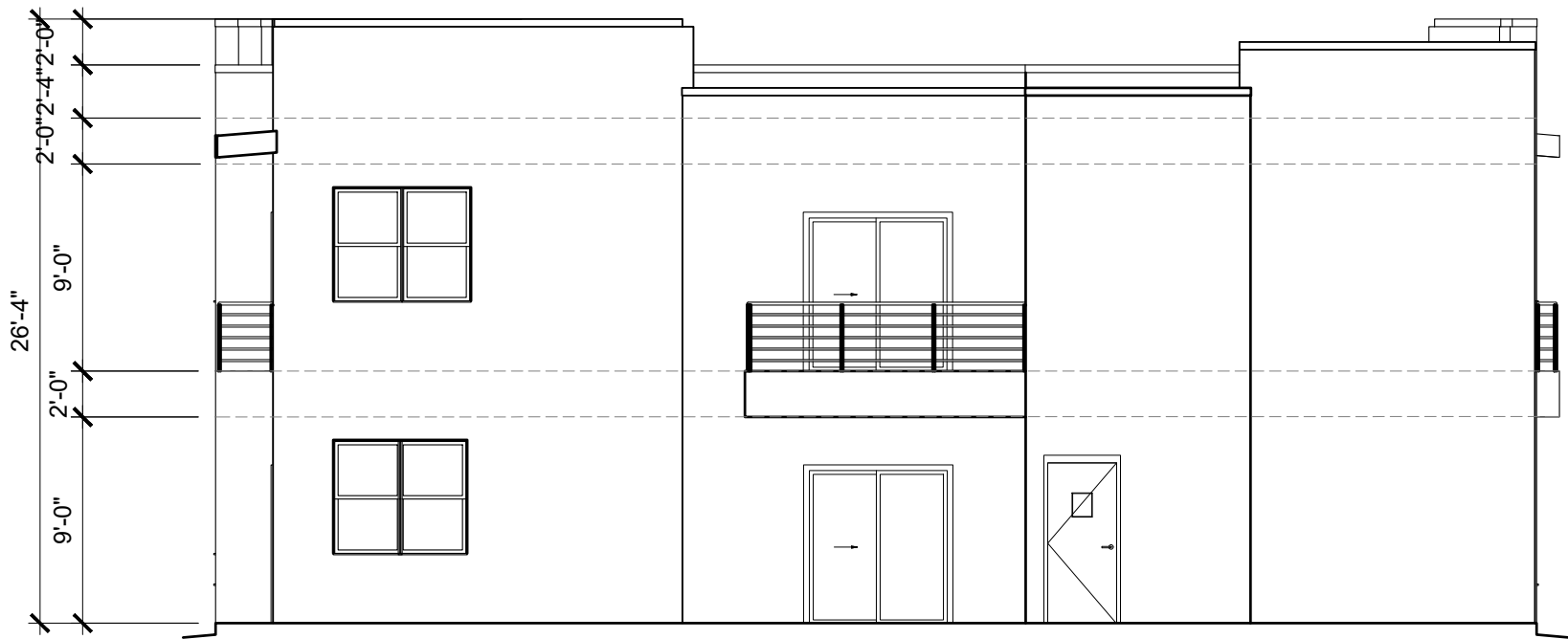
**SAMANA APARTMENTS**  
1111 BATAAN DR SW  
ALBUQUERQUE, NM 87121

DRAWING TITLE			
BUILDING 5 ELEVATIONS			
<div><div>SEAL</div><div></div></div>	DESIGNED	PROJECT NO	
	DRAWN	SCALE	
	CHECKED	DRAWING NO	
	REVIEWED	<b>A-202</b> _____ OF _____	
	DATE 9/18/2025		



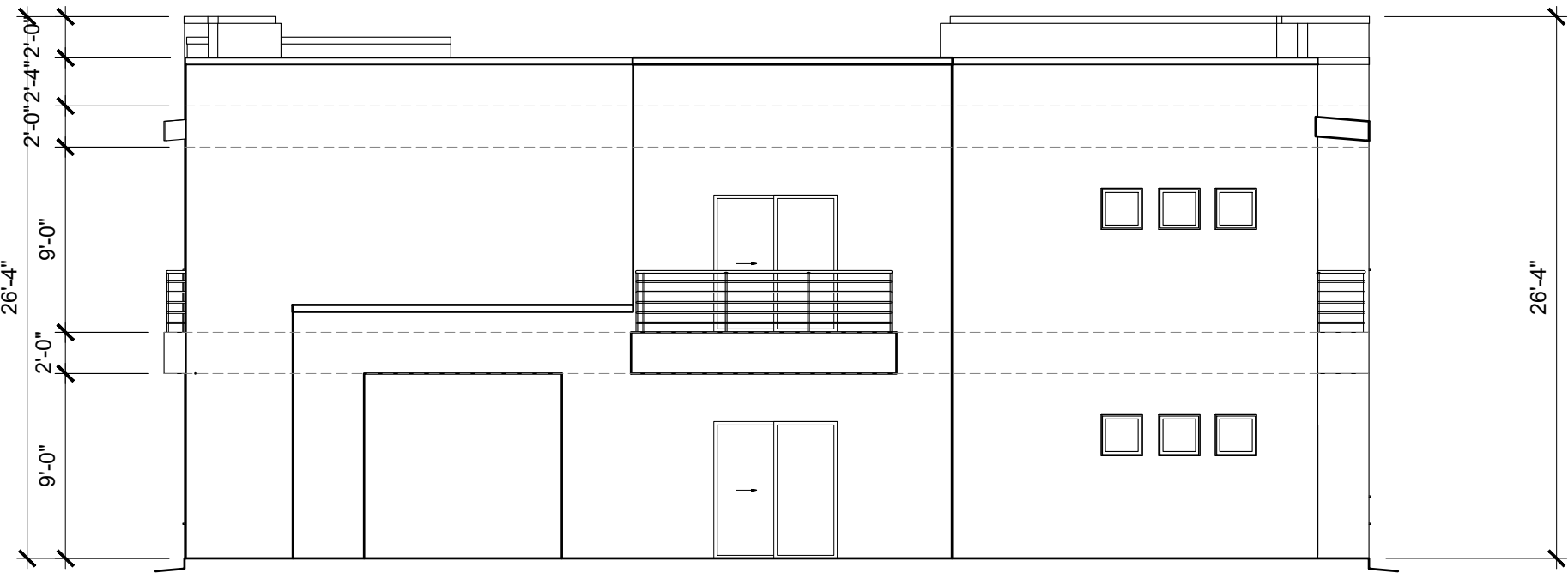
SOUTH ELEVATION

SCALE: 1/8" = 1'-0"



EAST ELEVATION

SCALE: 1/8" = 1'-0"



WEST ELEVATION

SCALE: 1/8" = 1'-0"



NORTH ELEVATION

SCALE: 1/8" = 1'-0"


- GENERAL NOTES:
- SUBMIT MANUFACTURER'S STANDARD COLOR CHART TO OWNER FOR THE SELECTION OF THE STUCCO COLOR.
  - STUCCO UNDERLAYMENT TO BE ONE PLY 15LBS, 20PSI, GRADE D. WEATHERLAP EDGES 4 INCHES MIN. ATTACH WITH LARGE HEAD PLASTIC WASHER HEAD SCREWS OR 1 INCH CROWN STAPLES.
  - INSTALL 17GA STUCCO NETTING OVER SHEATHING AND UNDERLAYMENT PROVIDING 1 INCH LAP AT ENDS.
  - APPLY TWO COAT PORTLAND CEMENT PLASTER IN ACCORDANCE WITH ASTM C926, MANUFACTURER'S INSTRUCTIONS, AND APPLICABLE CODES.
  - BROWN COAT TO BE APPLIED WITH A MIN 3/8 INCH THICKNESS WITH SUFFICIENT TROWEL PRESSURE TO KEY PLASTER INTO STUCCO MESH. ROD SURFACE TO A TRUE PLANE. EMBED FIBERGLASS REINFORCEMENT INTO WET BROWN COAT. FLOAT OR LIGHTLY BROOM TO PROVIDE FOR BOND WITH FINISH COAT.
  - MOIST CURE FIRST COAT WITH FOG SPRAY OF CLEAR WATER WITH FREQUENT APPLICATIONS TO MAINTAIN PLASTER MOISTURE FOR A MIN OF 48 HOURS FOLLOWING APPLICATION.
  - EXTERIOR FINISH COAT TO BE FACTORY MIXED, WATER BASED, ACRYLIC POLYMER COATING WITH GRADED AGGREGATE AND INTEGRAL COLOR. APPLY OVER CURED SCRATCH AND BROWN COATS TO A MIN 1/8 INCH THICKNESS. FINISH TEXTURE AND THICKNESS TO MATCH OWNER APPROVED SAMPLE.

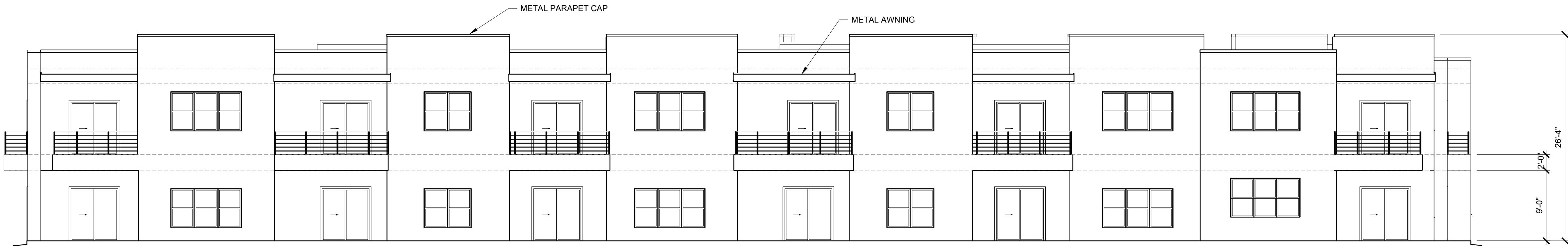
No	Revision	Item	Date



**SCOTT C. ANDERSON**  
& associates architects  
2818 4th St NW, Suite C Albuquerque NM 87107  
scott@scarchitects.com  
505.401.7575

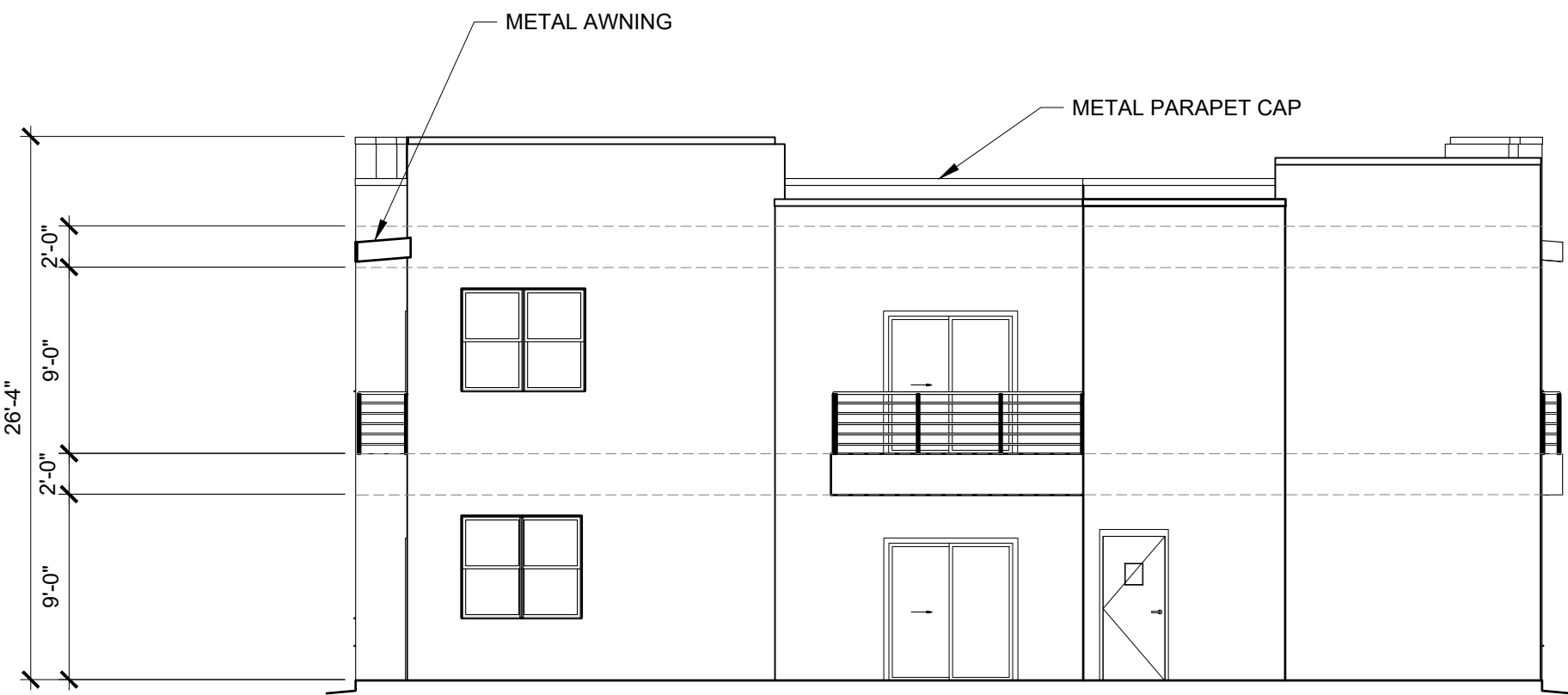
SAMANA APARTMENTS  
1111 BATAAN DR SW  
ALBUQUERQUE, NM 87121

DRAWING TITLE			
BUILDING 6 ELEVATIONS			
	DESIGNED	PROJECT NO	
	DRAWN	SCALE	
	CHECKED	DRAWING NO	
	REVIEWED	<b>A-203</b>	
	DATE 9/18/2025		



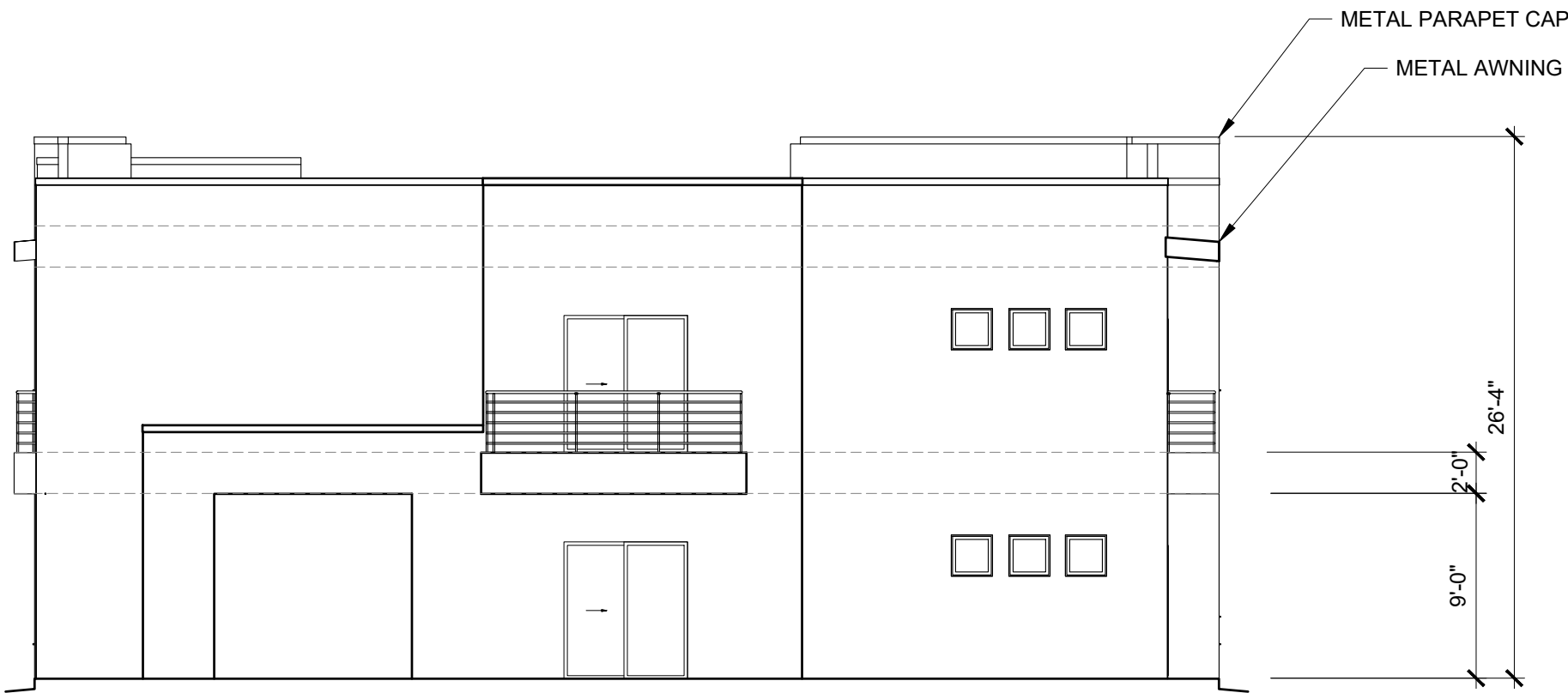
**SOUTH ELEVATION**

SCALE: 1/8" = 1'-0"



**EAST ELEVATION**

SCALE: 1/8" = 1'-0"



**WEST ELEVATION**

SCALE: 1/8" = 1'-0"



**NORTH ELEVATION**

SCALE: 1/8" = 1'-0"


- GENERAL NOTES:
- SUBMIT MANUFACTURER'S STANDARD COLOR CHART TO OWNER FOR THE SELECTION OF THE STUCCO COLOR.
  - STUCCO UNDERLAYMENT TO BE ONE PLY 15LBS, 20PSI, GRADE D. WEATHERLAP EDGES 4 INCHES MIN. ATTACH WITH LARGE HEAD PLASTIC WASHER HEAD SCREWS OR 1 INCH CROWN STAPLES.
  - INSTALL 17GA STUCCO NETTING OVER SHEATHING AND UNDERLAYMENT PROVIDING 1 INCH LAP AT ENDS.
  - APPLY TWO COAT PORTLAND CEMENT PLASTER IN ACCORDANCE WITH ASTM C926, MANUFACTURER'S INSTRUCTIONS, AND APPLICABLE CODES.
  - BROWN COAT TO BE APPLIED WITH A MIN 3/8 INCH THICKNESS WITH SUFFICIENT TROWEL PRESSURE TO KEY PLASTER INTO STUCCO MESH. ROD SURFACE TO A TRUE PLANE. EMBED FIBERGLASS REINFORCEMENT INTO WET BROWN COAT. FLOAT OR LIGHTLY BROOM TO PROVIDE FOR BOND WITH FINISH COAT.
  - MOIST CURE FIRST COAT WITH FOG SPRAY OF CLEAR WATER WITH FREQUENT APPLICATIONS TO MAINTAIN PLASTER MOISTURE FOR A MIN OF 48 HOURS FOLLOWING APPLICATION.
  - EXTERIOR FINISH COAT TO BE FACTORY MIXED, WATER BASED, ACRYLIC POLYMER COATING WITH GRADED AGGREGATE AND INTEGRAL COLOR. APPLY OVER CURED SCRATCH AND BROWN COATS TO A MIN 1/8 INCH THICKNESS. FINISH TEXTURE AND THICKNESS TO MATCH OWNER APPROVED SAMPLE.

No	Revision	Item	Date



**SCOTT C. ANDERSON**  
& associates architects  
2818 4th St NW, Suite C | Albuquerque NM 87107  
scott@scarchitects.com  
505.401.7575

SAMANA APARTMENTS  
1111 BATAAN DR SW  
ALBUQUERQUE, NM 87121

DRAWING TITLE			
BUILDINGS 8, 9 & 10 ELEVATIONS			
<div>SEAL<div></div></div>	DESIGNED	PROJECT NO	
	DRAWN	SCALE	
	CHECKED	DRAWING NO	
	REVIEWED	<div>A-204<div>_____ OF _____</div></div>	
	DATE		