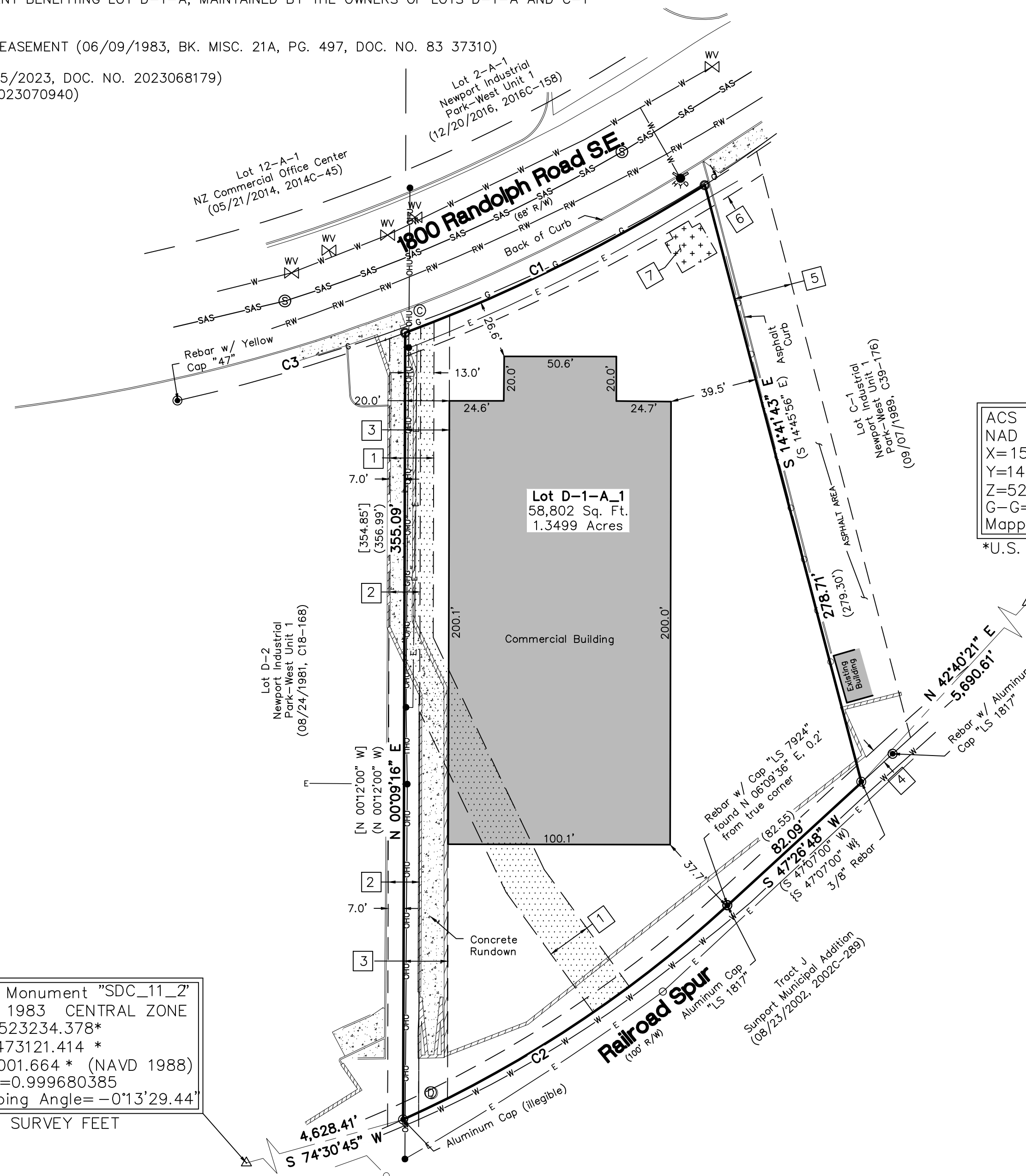


**Easement Notes**

- 1 EXISTING 20' TEMPORARY DRAINAGE EASEMENT GRANTED BY (02/23/1981, C18-11), RELOCATED BY PLAT (8/24/1981, C18-168) AND AS SHOWN ON PLAT (09/07/1989, C39-176) PORTIONS VACATED WITH THE FILING OF THIS PLAT, SHOWN HEREON AS [Pattern]
- 2 EXISTING 14' PUBLIC UTILITY EASEMENT (02/23/1981, C18-11) AND AS SHOWN ON PLAT (09/07/1989, C39-176)
- 3 EXISTING 20' PRIVATE DRAINAGE EASEMENT (09/07/1989, C39-176)
- 4 EXISTING 7' UTILITY EASEMENT (02/23/1981, C18-11) AND AS SHOWN ON PLAT (09/07/1989, C39-176)
- 5 EXISTING 26.5' ACCESS EASEMENT BENEFITING LOT D-1-A, MAINTAINED BY THE OWNERS OF LOTS D-1-A AND C-1 (09/07/1989, C39-176)
- 6 EXISTING 10' PNM AND MST&T EASEMENT (06/09/1983, BK. MISC. 21A, PG. 497, DOC. NO. 83 37310)
- 7 EXISTING PNM EASEMENT (10/25/2023, DOC. NO. 2023068179) AND (11/07/2023, DOC. NO. 2023070940)

**Site Sketch for  
Lot D-1-A-1  
Newport Industrial Park-West, Unit 1  
Being Comprised of  
Lot D-1-A  
Newport Industrial Park-West, Unit 1  
City of Albuquerque  
Bernalillo County, New Mexico  
March 2025**

Curve Table					
Curve #	Length	Radius	Delta	Chord Length	Chord Direction
C1	150.94' [186.55'] - (35.60')	765.35' (765.35') [765.35']	11°17'59"	150.69'	N 63°44'40" E
C2	176.11' (212.36') [175.83']	553.79' (553.79') [553.79']	18°13'14"	175.37'	N 56°33'23" E
C3	107.32' [107.32'] [107.32']	765.35' [765.35'] [765.35']	8°02'03"	107.23'	S 73°24'41" W

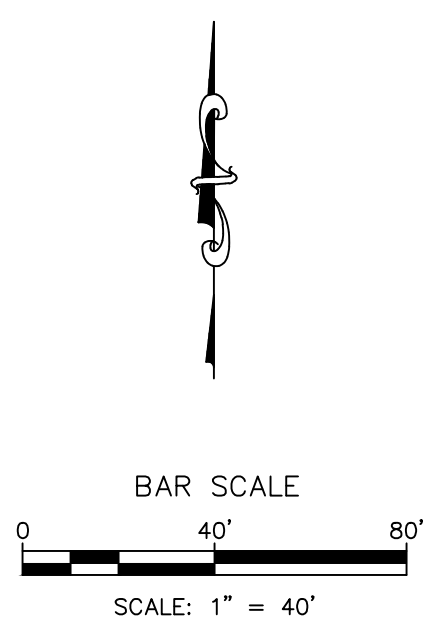


ACS Monument "19\_L16"  
NAD 1983 CENTRAL ZONE  
X=1531755.929 \*  
Y=1478691.641 \*  
Z=5297.506 \* (NAVD 1988)  
G-G=0.999664048  
Mapping Angle=-0°12'31.00"  
\*U.S. SURVEY FEET

ACS Monument "SDC\_11\_2"  
NAD 1983 CENTRAL ZONE  
X=1523234.378 \*  
Y=1473121.414 \*  
Z=5001.664 \* (NAVD 1988)  
G-G=0.999680385  
Mapping Angle=-0°13'29.44"  
\*U.S. SURVEY FEET

**Legend**

- N 90°00'00" E MEASURED BEARINGS AND DISTANCES
- (N 90°00'00" E) RECORD BEARINGS AND DISTANCES PER PLAT (09/07/1989, C39-176)
- [N 90°00'00" E] RECORD BEARINGS AND DISTANCES PER PLAT (08/24/1981, C18-168)
- {N 90°00'00" E} RECORD BEARINGS AND DISTANCES PER PLAT (02/23/1981, C18-11)
- FOUND MONUMENT AS INDICATED
- SET 1/2" REBAR WITH CAP "LS 18374" UNLESS OTHERWISE NOTED
- [Pattern] CONCRETE
- [Pattern] BLOCK WALL
- CHAINLINK FENCE
- OHU— OVERHEAD UTILITY LINE
- UTILITY POLE
- ⊙ CABLE MANHOLE
- WV WATER VALVE
- ⊙ FIRE HYDRANT
- ⊙ SANITARY SEWER MANHOLE
- ⊙ STORM DRAIN MANHOLE
- RW— UNDERGROUND REUSE WATER UTILITY LINE
- G— UNDERGROUND GAS UTILITY LINE
- W— UNDERGROUND WATER UTILITY LINE
- SAS— UNDERGROUND SANITARY SEWER LINE
- E— UNDERGROUND ELECTRIC UTILITY LINE
- SD— UNDERGROUND STORM DRAIN UTILITY LINE



**CSI-CARTESIAN SURVEYS INC.**

P.O. BOX 44414 RIO RANCHO, N.M. 87174  
Phone (505) 896-3050 Fax (505) 891-0244  
cartesianbrian@gmail.com