

Easement Notes

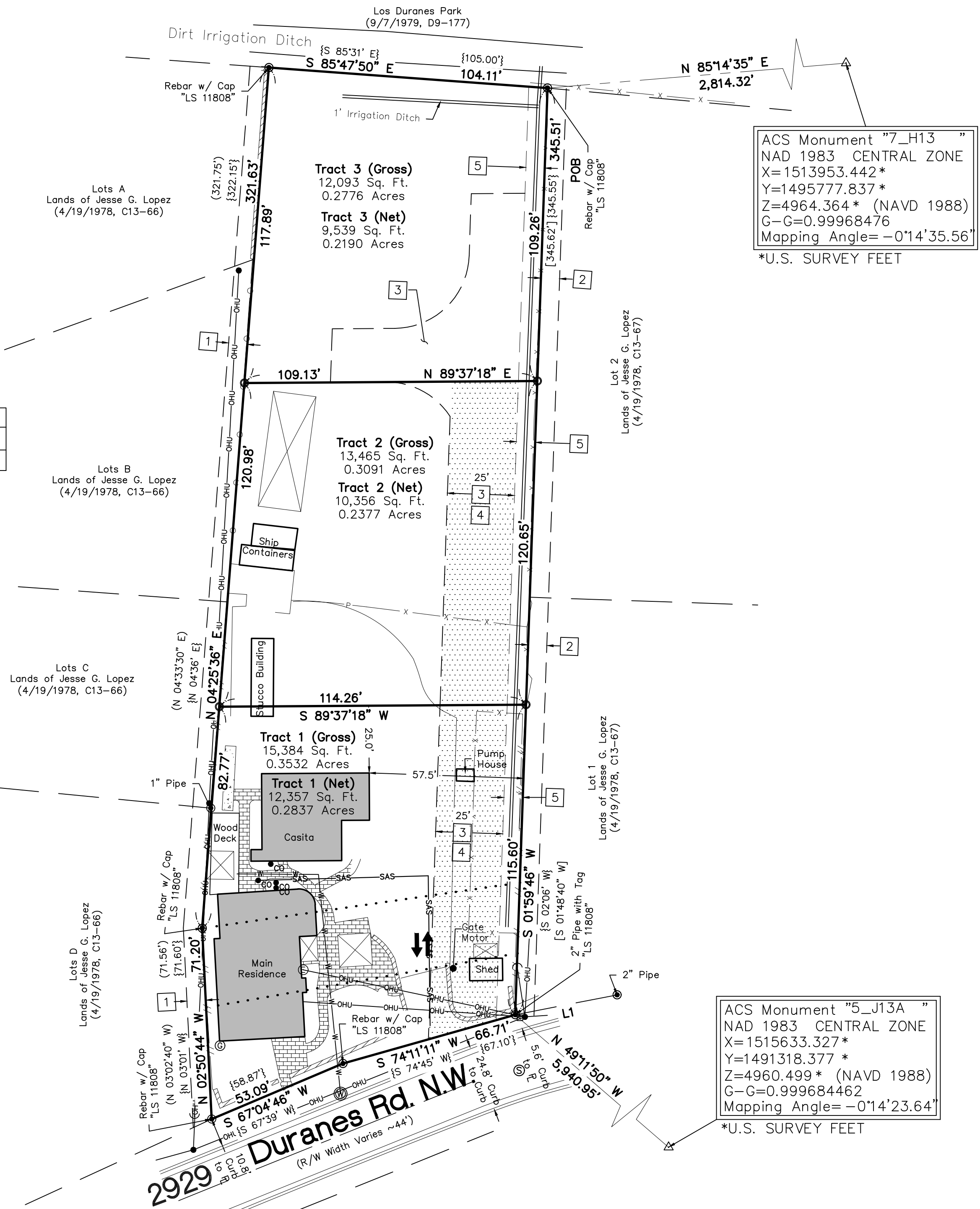
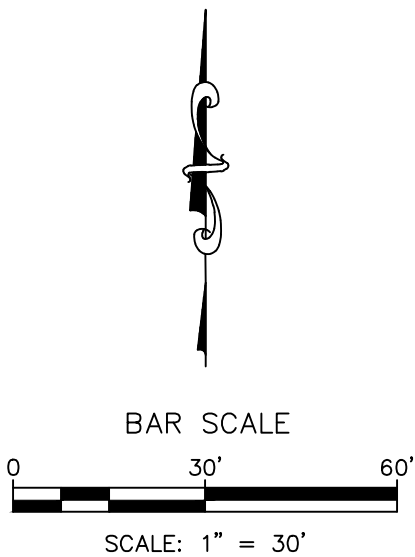
- 1
- EXISTING 7' P.U.E. (04/19/1978, C13-66)
- 2
- EXISTING 7' P.U.E. (04/19/1978, C13-67)
- 3
- PRIVATE ACCESS EASEMENT, BENEFITING AND MAINTAINED BY TRACTS 2 AND 3, GRANTED WITH THE FILING OF THIS PLAT
- 4
- PUBLIC WATER AND SANITARY SEWER EASEMENT, GRANTED WITH THE FILING OF THIS PLAT, SHOWN HEREON AS
- 5
- 7' IRRIGATION EASEMENT, BENEFITING TRACTS 1 THRU 3, MAINTAINED BY THE IRRIGATION USERS, GRANTED WITH THE FILING OF THIS PLAT

Line Table		
Line #	Direction	Length (ft)
L1	N 78°57'27" E [N 78°10'00" E]	38.69' [37.50']

Site Sketch for
Tracts 1 thru 3,
Lands of Morin
Being Comprised of
Tracts 195, 194-B, and
194-A-1-A-7-B, MRGCD Map No. 35
City of Albuquerque
Bernalillo County, New Mexico
May 2025

Legend

N 90°00'00" E	MEASURED BEARINGS AND DISTANCES
(N 90°00'00" E)	RECORD BEARINGS AND DISTANCES PER PLAT (4/19/1978, C13-66)
[N 90°00'00" E]	RECORD BEARINGS AND DISTANCES PER PLAT (4/19/1978, C13-67)
{N 90°00'00" E}	RECORD BEARINGS AND DISTANCES PER DEED (7/20/2015, DOC. NO. 2015061775)
●	FOUND MONUMENT AS INDICATED
○	SET 1/2" REBAR WITH CAP "LS 18374" UNLESS OTHERWISE NOTED
⊠	COVERED AREA
▨	BRICK
▩	BLOCK WALL
—//—	WOOD FENCE
—x—	WIRE FENCE
—□—	METAL FENCE
—○—	CHAINLINK FENCE
—P—	PIPE FENCE
■	BOLLARD
□	UTILITY PEDESTAL
—OHU—	OVERHEAD UTILITY LINE
•	UTILITY POLE
↪	ANCHOR
ⓔ	ELECTRIC METER
ⓖ	GAS METER
Ⓢ	WATER METER
Ⓢ	MANHOLE
•co	SAS CLEANOUT
↕	CURB CUT/INDICATION OF ACCESS TO ROADWAY
—G—	UNDERGROUND GAS UTILITY LINE
—W—	UNDERGROUND WATER UTILITY LINE
—SAS—	UNDERGROUND SANITARY SEWER LINE
—E—	UNDERGROUND ELECTRIC UTILITY LINE



CSI-CARTESIAN SURVEYS INC.

P.O. BOX 44414 RIO RANCHO, N.M. 87174
Phone (505) 896 - 3050 Fax (505) 891 - 0244
cartesianbrian@gmail.com