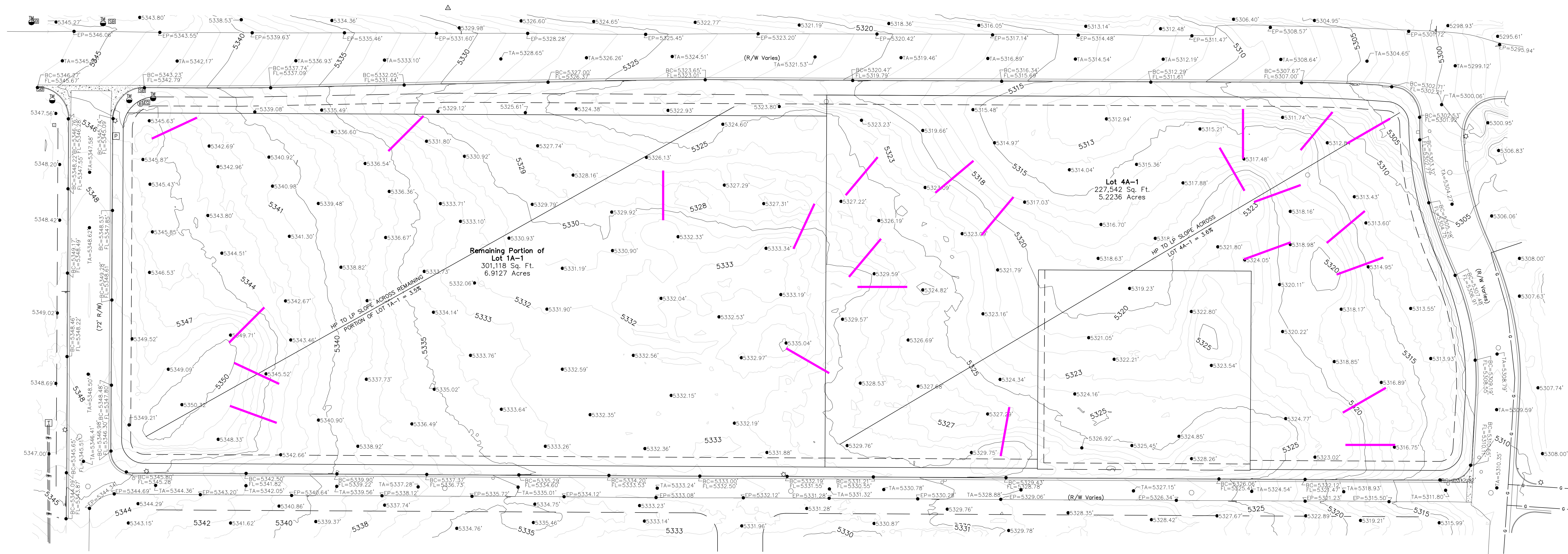


Escarpment
Land with 9 percent slope or more, where development is discouraged. The Northwest Mesa Escarpment is part of the Petroglyph National Monument, which is also designated as Major Public Open Space. See also Open Space Definitions for Major Public Open Space.

Steep Slope
Land with 9 percent slope or more, where development is discouraged.

Nothing in the IDO definitions requires slope measurements to span an entire parcel nor to use long transects to negate the existence of localized topographic relief by claiming the average is lower.

Boundary Survey,
ALTA/NSPS Land Title Survey
and
Slopes Analysis
for
Portion of Lot 1A-1 and all
of Lot 4A-1, Block 3
Volcano Cliffs Unit 26
City of Albuquerque
Bernalillo County, New Mexico
July 2025



Each Magenta Bar is scaled to 55 Feet
Wherever a bar crosses 5 contours, the
slope is 9.09% or greater.

Line Table		
Line #	Direction	Length (ft)
L1	S 03°29'11" W	47.52'
L2	N 00°18'54" E	1.00'
L3	N 00°18'54" E	1.00'
L4	S 89°44'04" E	91.31'

Curve Table					
Curve #	Length	Radius	Delta	Chord Length	Chord Direction
C1	111.76'	1422.00'	4°30'11"	111.73'	S 87°28'09" E
C2	37.00'	25.00'	84°48'28"	33.72'	S 42°48'50" E
C3	163.74'	386.00'	24°18'18"	162.52'	S 12°33'45" E
C4	29.66'	456.46'	3°43'21"	29.65'	S 22°22'06" E
C5	127.72'	309.30'	23°39'30"	126.81'	S 06°49'03" E
C6	37.89'	25.00'	86°49'43"	34.36'	S 46°54'03" W
C7	39.26'	25.00'	89°58'44"	35.35'	N 44°41'44" W
C8	54.96'	35.00'	89°58'18"	49.49'	N 45°16'47" E
C9	17.89'	35.00'	29°17'20"	17.70'	S 14°56'18" W
C10	37.09'	35.00'	60°42'45"	35.38'	S 59°54'34" W

