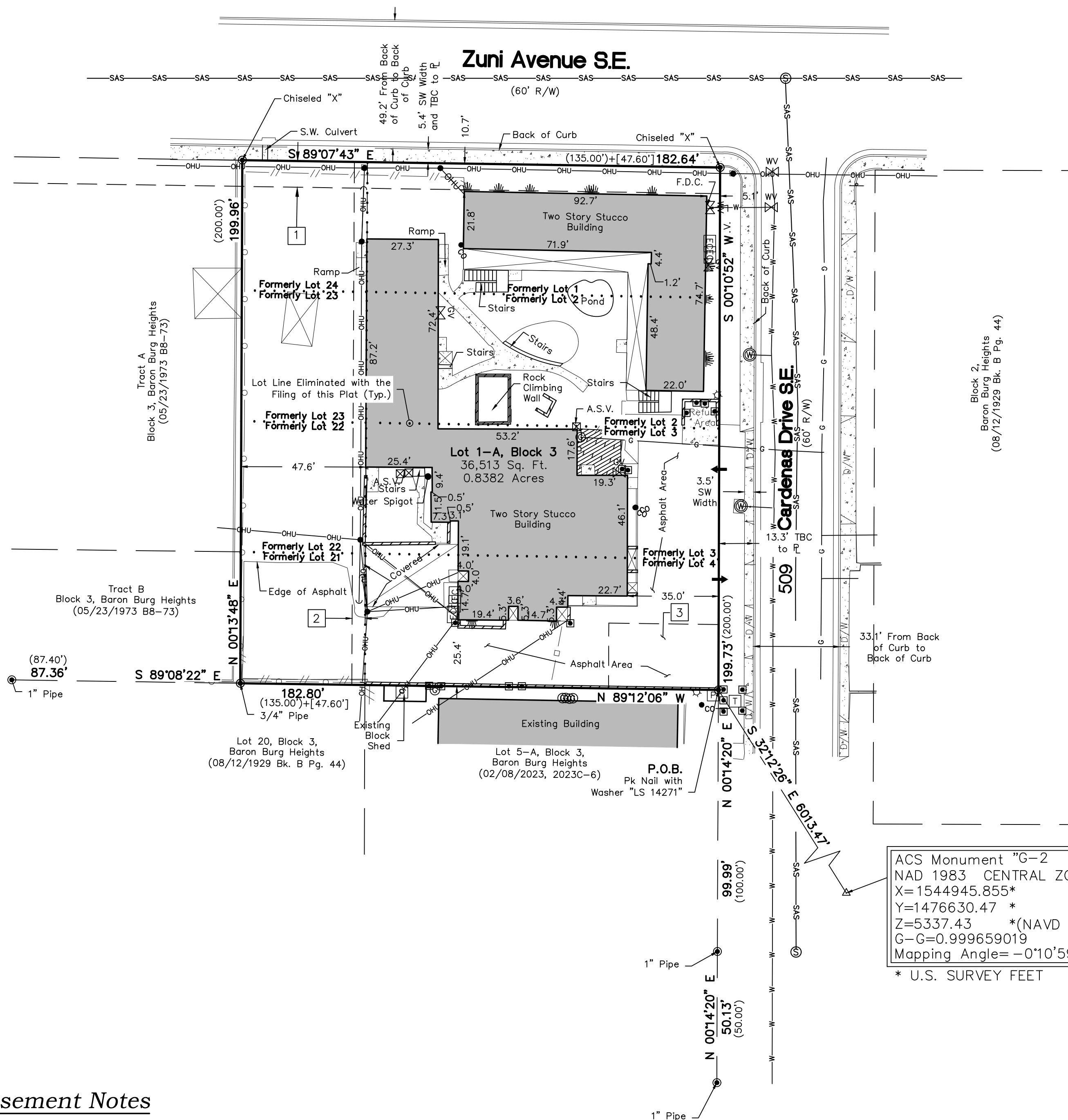
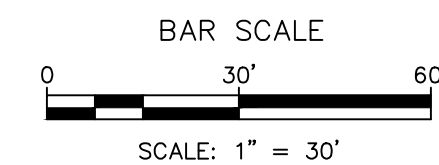


**Site Sketch for  
Lot 1-A, Block 3  
Baron Burg Heights Addition  
Being Comprised of  
Lots 1, 2, 3, 4 and Portions of  
Lots 21, 22, 23 and 24 of  
Shirley's Subdivision, Block 3,  
Baron Burg Heights Addition  
City of Albuquerque, Bernalillo County, New Mexico  
October 2025**



**Legend**

N 90°00'00" E	MEASURED BEARINGS AND DISTANCES
(N 90°00'00" E)	RECORD BEARINGS AND DISTANCES PER PLAT (08/12/1929 B-44)
[N 90°00'00" E]	RECORD BEARINGS AND DISTANCES PER PLAT (05/23/1973 B8-73)
●	FOUND MONUMENT AS INDICATED
○	SET MONUMENT AS INDICATED
⊠	COVERED AREA
▨	CONCRETE
▩	WOOD DECK
▧	BLOCK WALL
—//—	WOOD FENCE
—○—	CHAINLINK FENCE
■	BOLLARD
—OHU—	OVERHEAD UTILITY LINE
•	UTILITY POLE
⌋	ANCHOR
☆	LIGHT POLE
⊙	ELECTRIC METER
⊞	ELECTRIC CABINET
⊚	GAS METER
⊞	GAS VALVE (NO METER)
⊞	WATER METER
⊞	ROOF DRAIN
⊞	SANITARY SEWER MANHOLE
⊞	SAS CLEANOUT
⊞	IRRIGATION BOX
FDC	FIRE DEPARTMENT CONNECTION
PIV	POST INDICATOR VALVE
ASV	ANTI-SIPHON VALVE
↕	CURB CUT/INDICATION OF ACCESS TO ROADWAY



**Easement Notes**

- 1 10' P.N.M. AND M.S.T.&T.CO. EASEMENT (09/29/1953 VOL. D-256, PG. 326 AS DOC. NO. 1827)
- 2 5' P.N.M. AND M.S.T.&T.CO. (09/24/1968 VOL. 116, PG. 157 AS DOC. NO. 8888)
- 3 25'x40' PRIVATE RECIPROCAL ACCESS EASEMENT FOR COMMON AREAS (1/14/2025, DOC. NO. 2025002500)

**CSI-CARTESIAN SURVEYS INC.**  
P.O. BOX 44414 RIO RANCHO, N.M. 87174  
Phone (505) 896-3050 Fax (505) 891-0244  
cartesianbrian@gmail.com