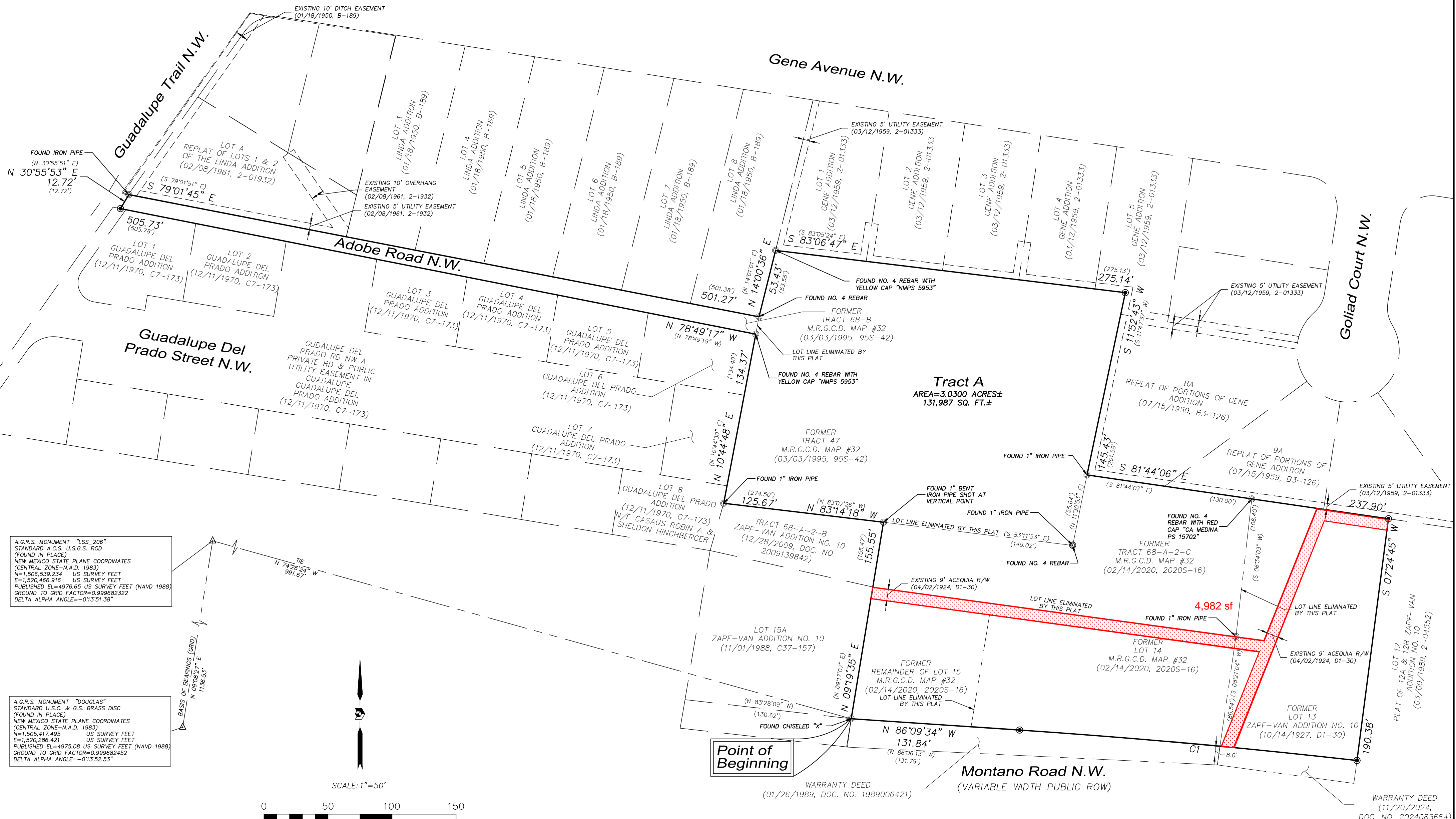


# Legal Description

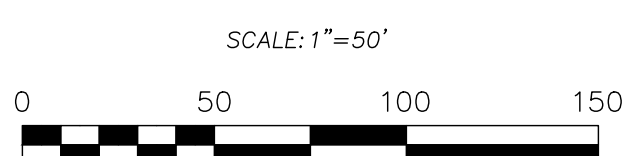
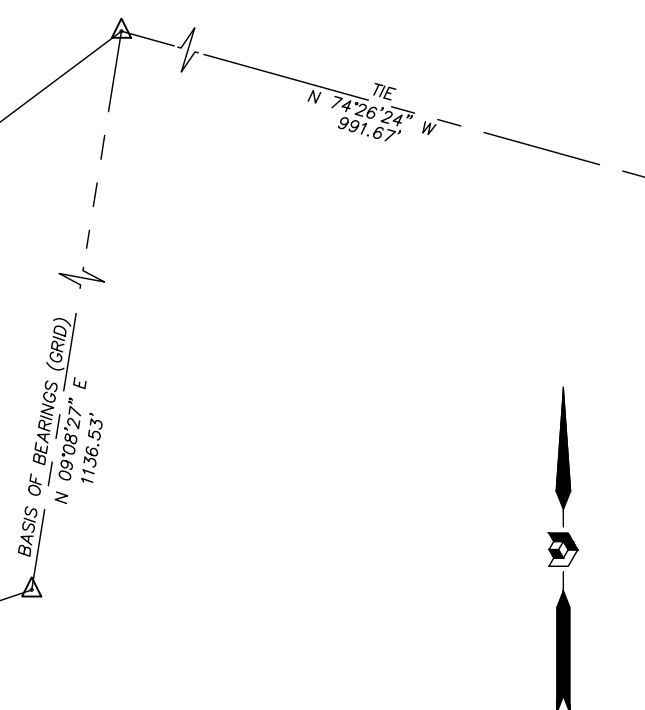
A TRACT OF LAND LYING AND SITUATE WITHIN THE ELENA GRANT, PROJECTED SECTION 32, TOWNSHIP 11 NORTH, RANGE 3 EAST, N.M.P.M., CITY OF ALBUQUERQUE, BERNALILLO COUNTY, NEW MEXICO, COMPRISING OF TRACTS 68-B AND 47, M.R.G.C.D. MAP 32, AS THE SAME IS SHOWN AND DESIGNATED ON THE PLAT THEREOF, FILED IN THE OFFICE OF THE COUNTY CLERK OF BERNALILLO COUNTY, NEW MEXICO ON MARCH 3, 1995 IN PLAT VOLUME 95S, FOLIO 42, TOGETHER WITH TRACT 68-A-2-C MRGDC MAP 32, LOT 14 AND AN EASTERLY PORTION OF LOT 15, ZAPF-VAN ADDITION NO. 10, AS THE SAME IS SHOWN AND DESIGNATED ON THE PLAT THEREOF, FILED IN THE OFFICE OF THE COUNTY CLERK OF BERNALILLO COUNTY, NEW MEXICO ON FEBRUARY 14, 2020 IN PLAT BOOK 2020S, PAGE 0016, AND TOGETHER WITH LOT 13 ZAPF-VAN ADDITION NO. 10, AS THE SAME IS SHOWN AND DESIGNATED ON THE PLAT THEREOF, FILED IN THE OFFICE OF THE COUNTY CLERK OF BERNALILLO COUNTY, NEW MEXICO ON APRIL 2, 1924 IN PLAT BOOK D1, PAGE 30, NOW COMPRISING TRACT A, LAS COLONIAS MEDICAL.

Plat of  
 Tract A,  
**Las Colonias Medical**  
 Elena Gallegos Grant  
 Projected Section 32, Township 11 North, Range 3 East, N.M.P.M.  
 Albuquerque, Bernalillo County, New Mexico  
 October 2025



A.G.R.S. MONUMENT "LSS-206"  
 STANDARD A.C.S. U.S.G.S. ROD  
 (FOUND IN PLACE)  
 NEW MEXICO STATE PLANE COORDINATES  
 (CENTRAL ZONE-N.A.D. 1983)  
 N=1,506,539.234 US SURVEY FEET  
 E=1,520,466.916 US SURVEY FEET  
 PUBLISHED EL=4976.66 US SURVEY FEET (NAVD 1988)  
 GROUND TO GRID FACTOR=0.999682322  
 DELTA ALPHA ANGLE=-0°13'51.38"

A.G.R.S. MONUMENT "DOUGLAS"  
 STANDARD U.S.C. & G.S. BRASS DISC  
 (FOUND IN PLACE)  
 NEW MEXICO STATE PLANE COORDINATES  
 (CENTRAL ZONE-N.A.D. 1983)  
 N=1,505,417.495 US SURVEY FEET  
 E=1,520,286.421 US SURVEY FEET  
 PUBLISHED EL=4975.08 US SURVEY FEET (NAVD 1988)  
 GROUND TO GRID FACTOR=0.999682452  
 DELTA ALPHA ANGLE=-0°13'52.53"



## Curve Table

CURVE	RADIUS	ARC LENGTH	CHORD LENGTH	CHORD BEARING	DELTA ANGLE
C1	5774.97'	264.55'	264.53'	N 84°50'50" W	2°37'29"
	(5772.58')	(156.88')	(156.88')	(N 85°19'30" W)	1°33'26"

## Legend

- N 90°00'00" E MEASURED BEARING AND DISTANCES
- (N 90°00'00" E)
- RECORD BEARINGS AND DISTANCES
- FOUND AND USED MONUMENT AS DESIGNATED
- DENOTES NO. 5 REBAR WITH PINK PLASTIC CAP "PS 11993" SET THIS SURVEY
- △ FOUND ALUMINUM AGRS MONUMENT AS DESIGNATED

**PRECISION SURVEYS, INC.**  
A COMPANY

**OFFICE LOCATION:**  
5501 Wilshire Avenue, NE - Suite E  
Albuquerque, NM 87113

505.856.5700 PHONE  
505.856.7900 FAX

**PROJECT INFORMATION**

CREW/TECH: MC	DATE OF SURVEY: 04/29-05/05/25
DRAWN BY: HJK/M	CHECKED BY: LM
PSI JOB NO. 7682P	SHEET NUMBER 3 OF 3