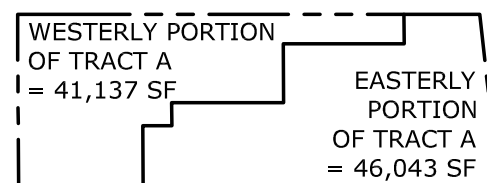


**PHASE 1 - BUILD OFFICE, SINGLE STORAGE BAY, LOADING DOCK AND REFUSE ENCLOSURE**

- PHASE 1 ADDITION
- 5'-0" WIDE FRONT YARD SETBACK
- EXISTING BUILDING TO REMAIN

**LANDSCAPE AREA REQUIREMENTS**



WESTERN PORTION OF SITE	41,136.73 SF
BUILDING AREA	9,520.00 SF
NET SITE AREA	31,616.73 SF
REQ'D LANDSCAPE AREA (15% OF NET)	4,742.51 SF

LANDSCAPE AREA PROVIDED = 4,761 SF

# 6TH STREET WAREHOUSE SITE PLAN - PHASE 1

SCALE: 1" = 40'-0"



GREER STAFFORD ARCHITECTURE  
1717 Louisiana Blvd NE, Suite 205  
Albuquerque, NM 87110  
PH: (505) 821-0235 | FAX: (505) 821-0348  
www.greer-stafford.com

CONSULTANT



**CITY OF ALBUQUERQUE**  
6TH Street Warehouse

CITY OF ALBUQUERQUE  
604 MENAUL BLVD NW  
ALBUQUERQUE, NM 87107

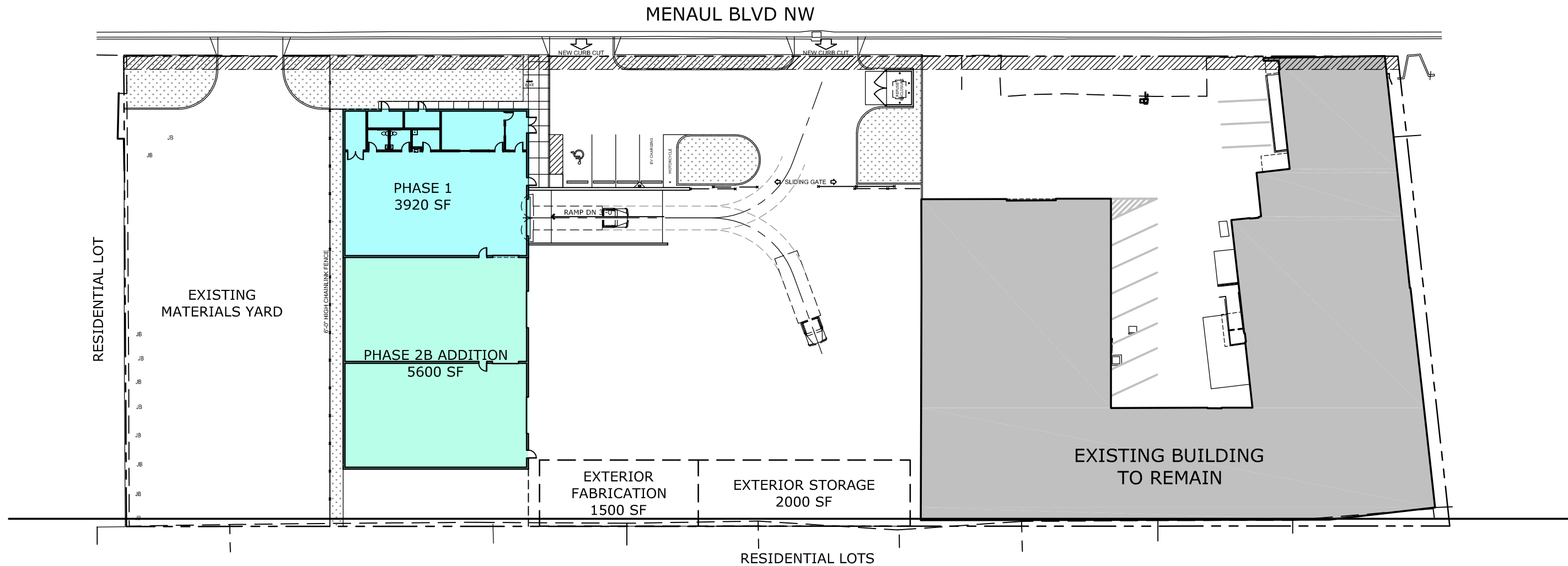
SHEET INFORMATION  
GS PROJ. NO. 5506.02  
DATE AUGUST 6, 2025

SHEET TITLE  
SITE PLAN  
PHASE 1

DRAWING SHEET

AS101

© GREER STAFFORD ARCHITECTURE



**PHASE 1** - OFFICE, SINGLE STORAGE BAY, LOADING DOCK AND REFUSE ENCLOSURE

- PHASE 1
- 5'-0" WIDE FRONT YARD SETBACK
- EXISTING BUILDING TO REMAIN

**PHASE 2** - STORAGE BAYS

- PHASE 2

## 6TH STREET WAREHOUSE SITE PLAN - PHASE 2

SCALE: 1" = 40'-0"



GREER STAFFORD ARCHITECTURE  
1717 Louisiana Blvd NE, Suite 205  
Albuquerque, NM 87110  
PH: (505) 821-0235 | FAX: (505) 821-0348  
www.greer-stafford.com

CONSULTANT



**CITY OF ALBUQUERQUE**  
6TH Street Warehouse

CITY OF ALBUQUERQUE  
604 MENAUL BLVD NW  
ALBUQUERQUE, NM 87107

SHEET INFORMATION  
GS PROJ. NO. 5506.02  
DATE AUGUST 6, 2025

SHEET TITLE  
SITE PLAN  
PHASE 2

DRAWING SHEET

AS102

© GREER STAFFORD ARCHITECTURE