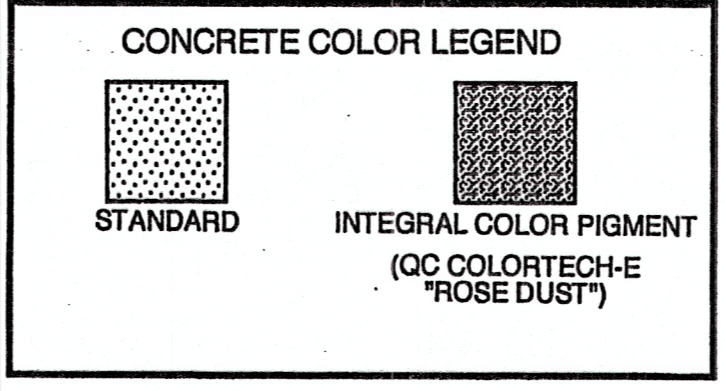


- ### KEYED NOTES
- SEE CIVIL DRAWINGS AND GENERAL MATERIALS NOTES ON SHEET A-1.1 FOR ITEMS NOT FULLY DESCRIBED BELOW.
 - 1. 10' PUBLIC UTILITY EASEMENT.
 - 2. 10' PUBLIC WATERLINE EASEMENT.
 - 3. 20' PRIVATE STORM DRAINAGE EASEMENT, SEE CIVIL.
 - 4. NEW CONCRETE SIDEWALK. SEE LEGEND FOR CONCRETE COLOR.
 - 5. SIDEWALK CULVERT, SEE CIVIL.
 - 6. ASPHALT PAVING.
 - 7. NOT USED.
 - 8. CONCRETE HEADER CURB, SEE CIVIL.
 - 9. (NOT USED).
 - 10. 8' HIGH DUMPSTER ENCLOSURE WITH SOLID PANEL METAL GATE. (CMU WALLS WITH CEMENT STUCCO FINISH WITH PAINTED STEEL SOLID PANEL DOUBLE LEAF GATE. SEE ELEVATIONS ON SHEET A-3.1 AND ENLARGED PLAN & SECTION ON B/A5-2.)
 - 11. BENCH SEATING FOR 4 UNDER PORCHED ENTRY. (BENCH N.I.C.)
 - 12. 5 FT. Ø TREE GRATE.
 - 13. SITE WALL ENCLOSING VIEW GARDEN, CMU WITH CEMENT STUCCO FINISH TOP OF WALL ELEVATION = 8'-8" AFF. EL.
 - 14. EXISTING CMU RETAINING WALL.
 - 15. BICYCLE RACK (CAPACITY 5 BIKES).
 - 16. DROP INLET, SEE CIVIL.
 - 17. PRECAST CONCRETE PARKING BUMPERS, TYP.
 - 18. HANDICAP PARKING SIGNS, SEE DETAIL 7/A3-2.
 - 19. SEE CIVIL FOR RIGHT OF WAY INFRASTRUCTURE IMPROVEMENTS: NEW RADIUS ENTRY DRIVE AND CONCRETE VALLEY; NEW CONCRETE SIDEWALK. ALL TO BE CONSTRUCTED PER CITY OF ALBUQUERQUE STANDARDS.
 - 20. WALL MOUNTED 12" HIGH CAST ALUMINUM LETTERING, SEE ELEVATIONS SHEET A-3.1.
 - 21. 18 FT. HIGH LIGHT POLE, SEE ELECTRICAL.
 - 22. LIGHTED MONUMENT SIGN, SEE DETAIL 1/A5-1.
 - 23. MONUMENT SIGN: INTERNALLY LIGHTED METAL SIGN BOX (COLOR: ROSEWOOD), WITH CUT OUT WHITE TRANSLUCENT ACRYLIC LETTERS (FONT: TIMES ITALIC) AS SHOWN BOTH EAST AND WEST SIDES.
 - 24. 12" Ø CONCRETE MONUMENT SIGN PEDESTALS WITH (4) #4 DOWELS VERTICAL WITH #3 TIES AT 12" O.C. CONCRETE TO BE INTEGRAL COLOR: WARM TONE TAN (CC COLORTECH-E "ROSE DUST").
 - 25. 2'-0" X 2'-0" X 1'-0" THICK CONCRETE FOOTING WITH (8) #4 REBAR EACH WAY.
 - 26. ELECTRICAL TRANSFORMER & CONCRETE PAD, SEE DRAWING E-2.1 KEYED NOTE 15 FOR PAD SPECIFICATIONS. SEE FOUNDATION PLAN S-1.1 FOR DIMENSIONS & LOCATION.



DESIGN DATA

ZONING: C-2-SC
 OCCUPANCY TYPE: B-2
 CONSTRUCTION TYPE: V-N
 CODE: UNIFORM BUILDING CODE, 1997 EDITION

AREA / PARKING RECAP

PHASE 1 - DENTAL CLINIC

HEATED BUILDING AREA - CLINIC 1ST FLOOR	5560 SF
TOTAL	5560 SF

PHASE 1 PARKING

REGULAR SPACES	12
SMALL CAR SPACES	3
HANDICAP SPACES	2

TOTAL PARKING PROVIDED: 17 SPACES (REQUIRED 5 PER DOCTOR = 10)

BICYCLE RACK: 3 SPACES PROVIDED

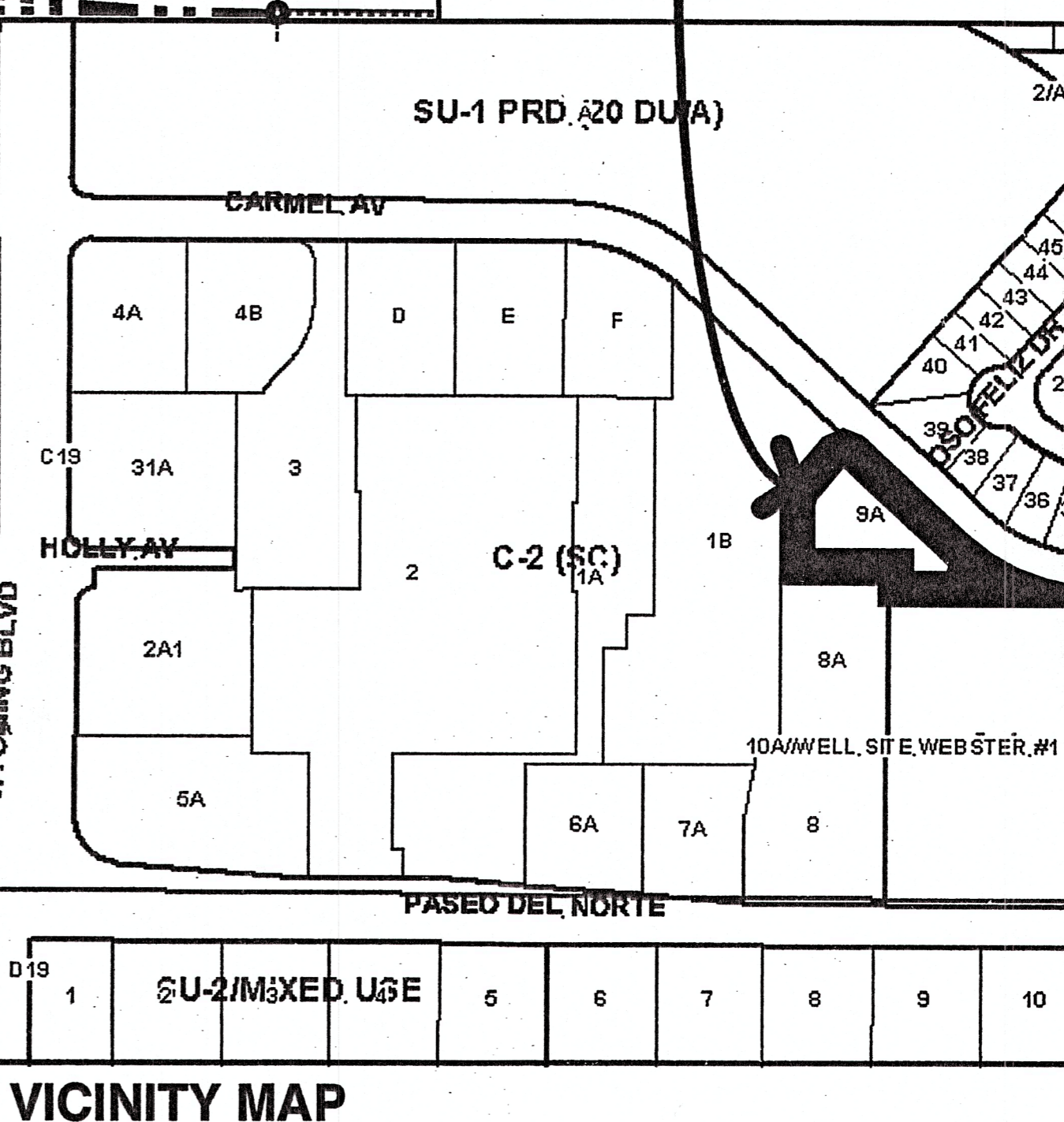
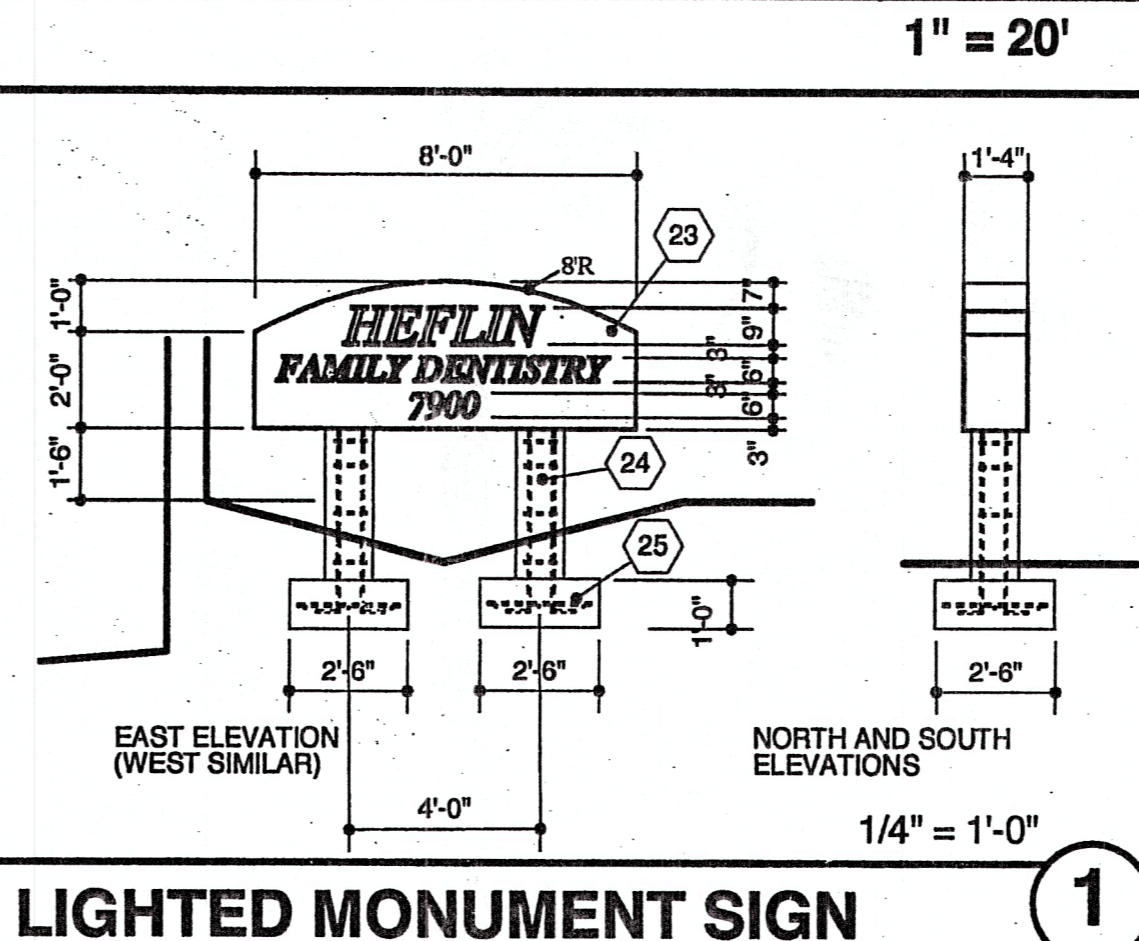
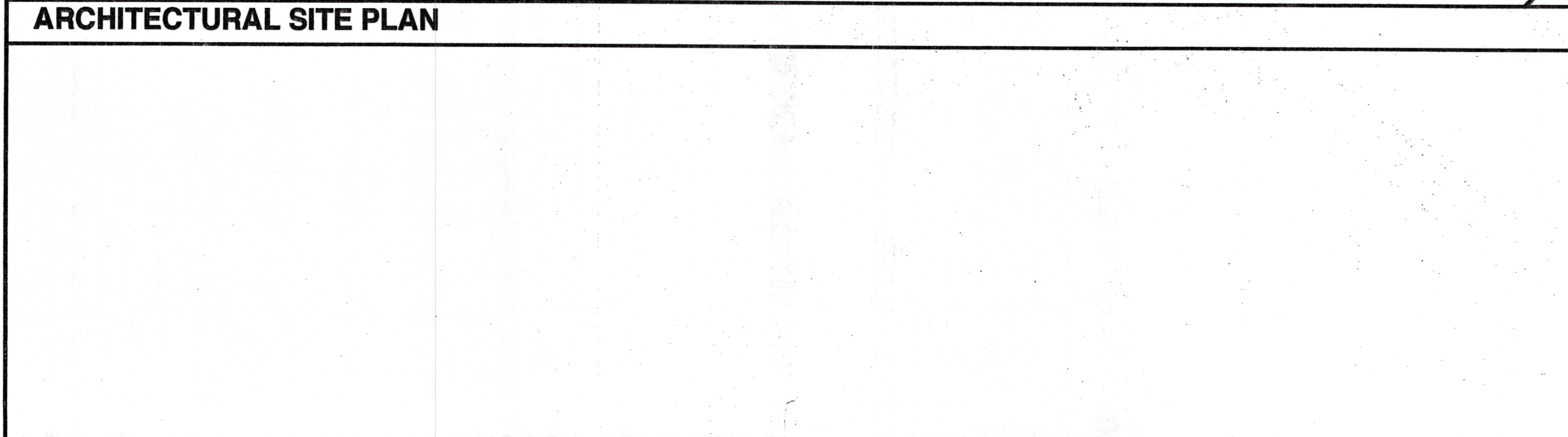
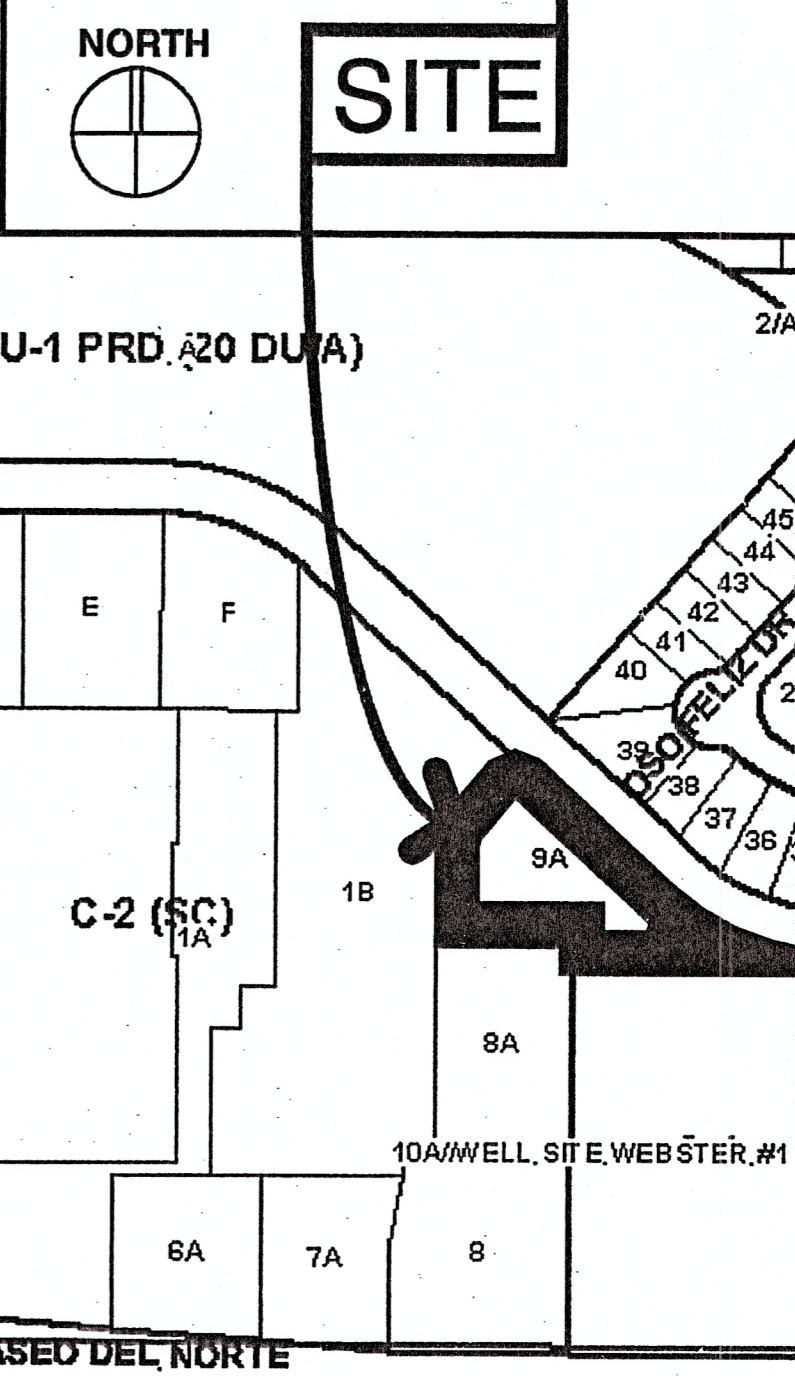
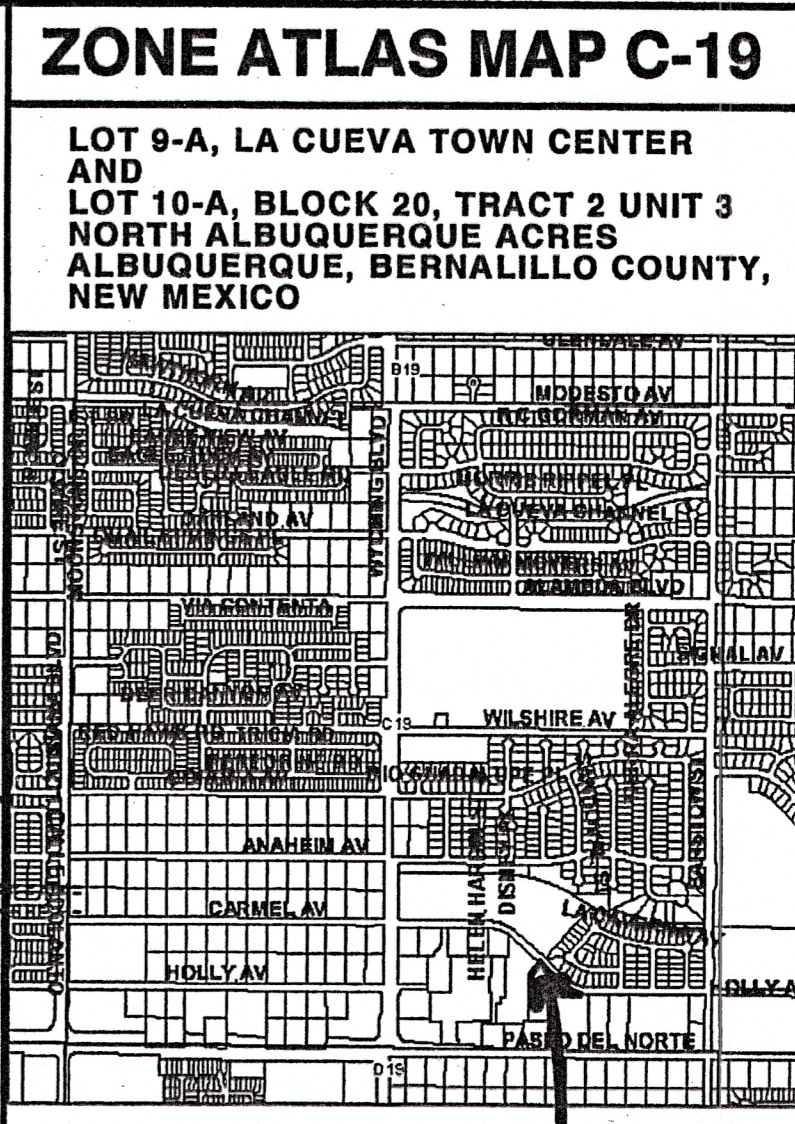
FUTURE PHASE 2 - BUILDING

HEATED BUILDING AREA - OFFICE 1ST FLOOR	3200 SF
TOTAL	3200 SF

PHASE 2 PARKING (TO BE BUILT AS PART OF PHASE 1 CONSTRUCTION)

REGULAR SPACES	12
SMALL CAR SPACES	3
HANDICAP SPACES	1

TOTAL PARKING PROVIDED: 16 SPACES (REQUIRED 1 PER 200SF = 16)



ARCHITECTURAL SITE PLAN
 HEFLIN DENTAL CLINIC
 7900 CARMEL NE - ALBUQUERQUE, NM
 7 SEPTEMBER 2005

MAHLMAN & MILES ARCHITECTS
 208 BROADWAY SE
 ALBUQUERQUE, NEW MEXICO 87102
 505-243-0101

AS-1