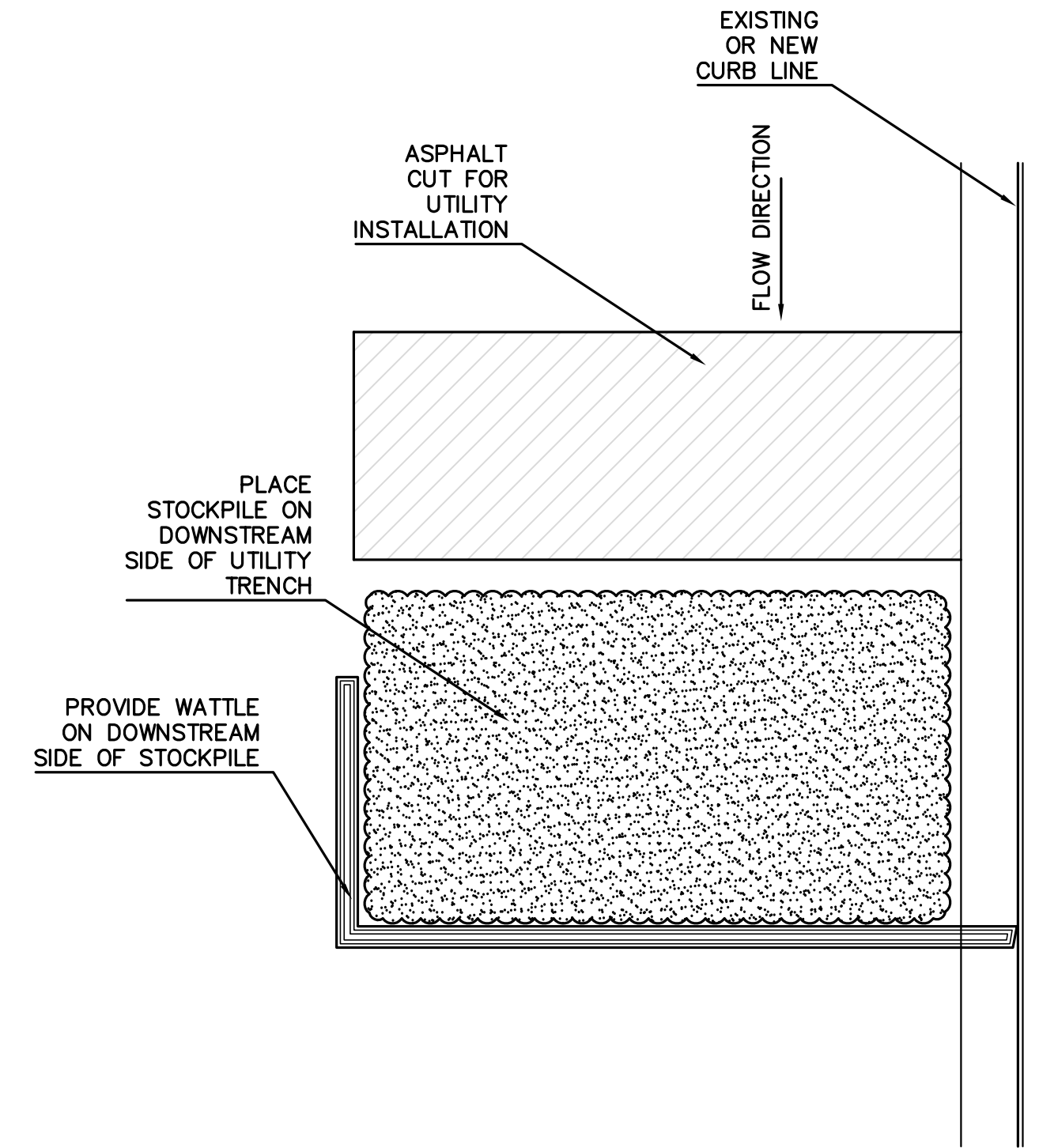
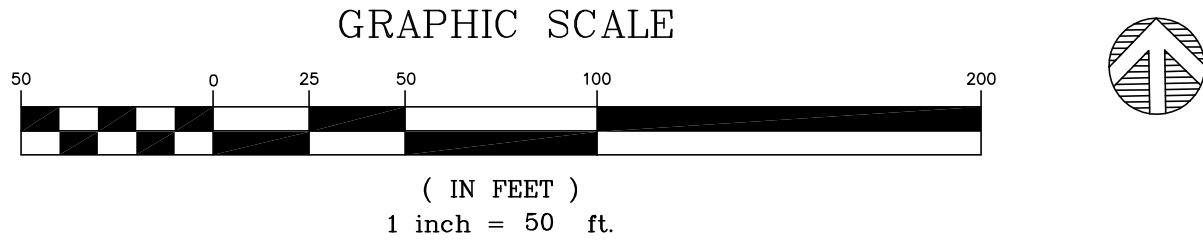
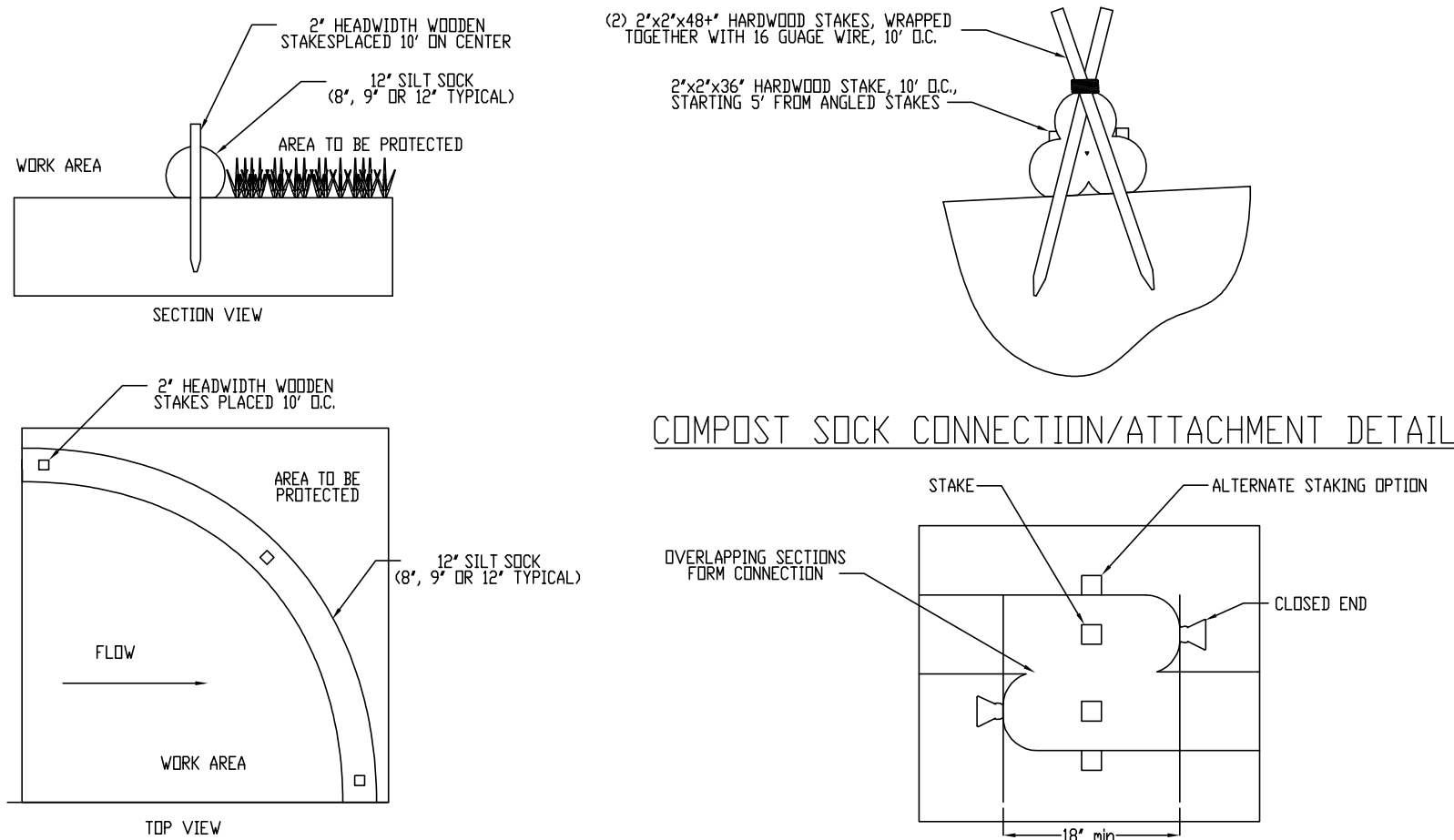


D1 TEMPORARY EROSION AND SEDIMENT CONTROL PLAN
SCALE: 1" = 50'-0"

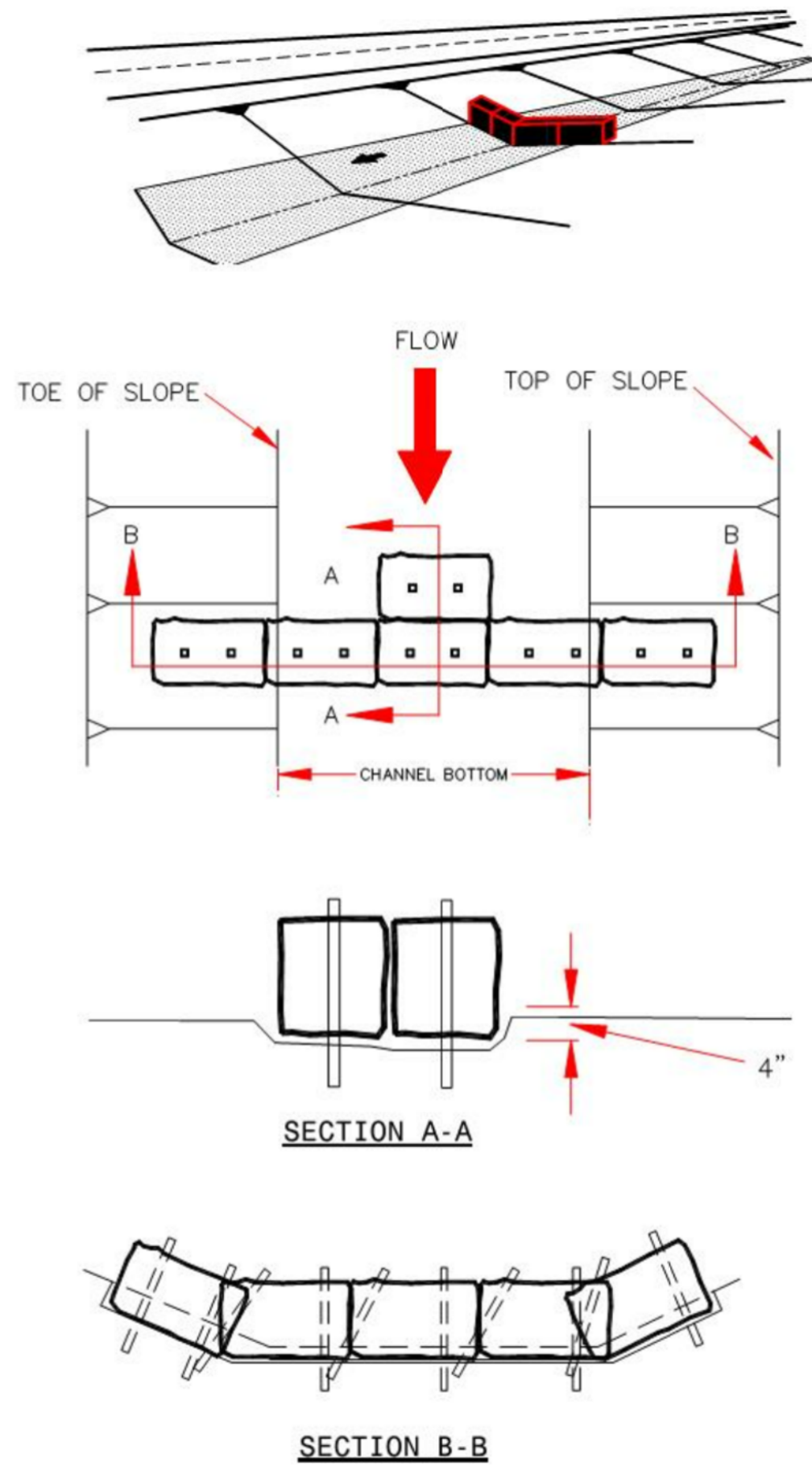


TYPICAL UTILITY CUT DETAIL
NOT TO SCALE

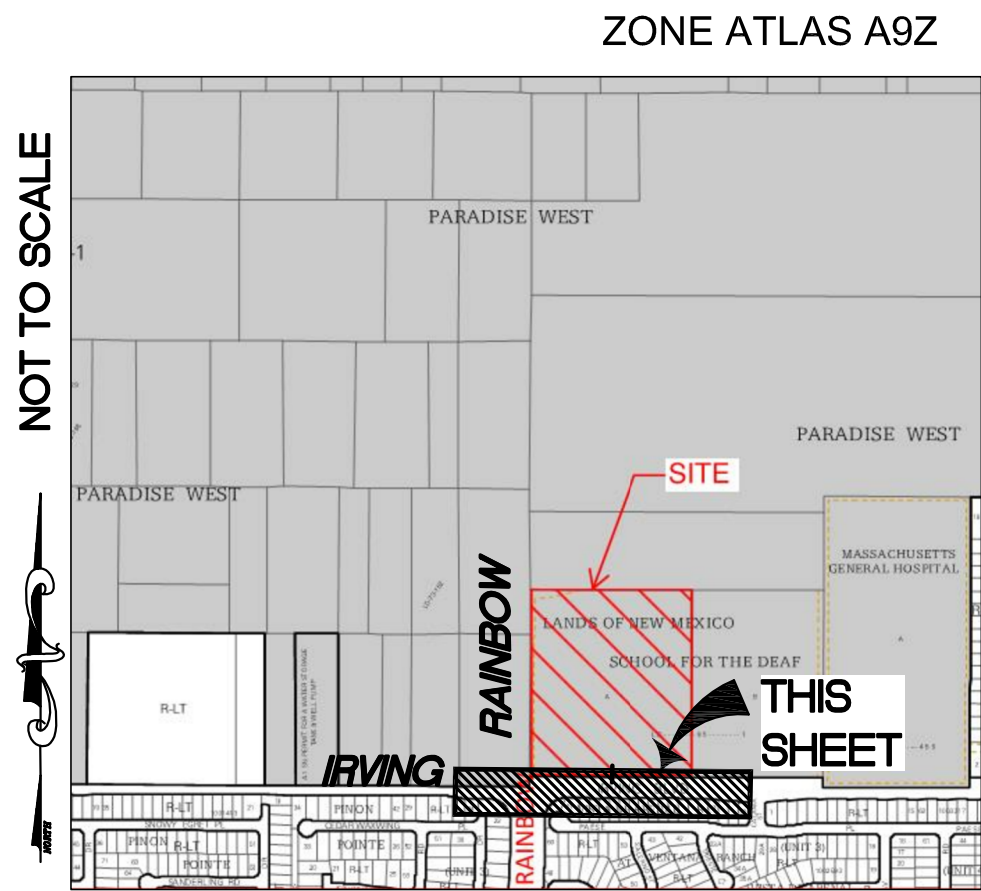
NOTE:
AN ALTERNATIVE TEMPORARY EROSION AND SEDIMENT CONTROL OPTION IS TO PLACE STOCK PILE ON UPSTREAM SIDE OF UTILITY CUT.
CONTRACTOR TO APPLY FOR eNOI WITH THE EPA PRIOR TO BEGINNING ANY SAWCUTTING OR UTILITY TRENCHING.



TYPICAL WATTLE DETAIL
NOT TO SCALE



TYPICAL HAY BALE DETAIL
NOT TO SCALE



VICINITY MAP

THE HARTMAN + MAJEWSKI
Design Group
120 VASSAR DRIVE SE SUITE 100
ALBUQUERQUE, NEW MEXICO 87106
PHONE : 505.242.6880 FAX : 505.242.6881

CITY OF ALBUQUERQUE
PUBLIC WORKS DEPARTMENT
ENGINEERING GROUP

TITLE: ALBUQUERQUE PUBLIC SCHOOLS
FAMILY SCHOOL NORTH WEST CAMPUS
TEMPORARY EROSION AND SEDIMENT CONTROL PLAN

Design Review Committee	City Engineer Approval	Mo./Day/Yr.	Mo./Day/Yr.

City Project No. 793782 Zone Map A-9-Z Sheet 2 Of 13

SURVEY INFORMATION		BENCH MARK		AS-BUILT INFORMATION	
FIELD NOTES					
NO.	BY	DATE	CONTROL STATION "NCS, LSS 103"		CONTRACTOR
			3 3/4 INCH DIAMETER ALUMINIM DISK		WORK STARTED BY: DATE
			NEW MEXICO STATE PLANE COORDINATES		INSPECTOR'S ACCEPTANCE BY: DATE
			(CENTRAL ZONE-N.A.D. 1983)		FIELD VERIFICATION BY: DATE
			X=1,530,978.77		DRAWINGS CORRECTED BY: DATE
			Y=1,505,524.23		MICRO-FILM INFORMATION
			CGSF=1,000,335,0235		
			ELEV=5294.87 (NAVD 88)		
					RECORDED BY: DATE
					RECORDED BY: DATE

DAVID A. AUBE

REGISTERED PROFESSIONAL ENGINEER

STATE OF NEW MEXICO

14221

5-8-17

REVISIONS

NO.	DATE	REMARKS	BY