

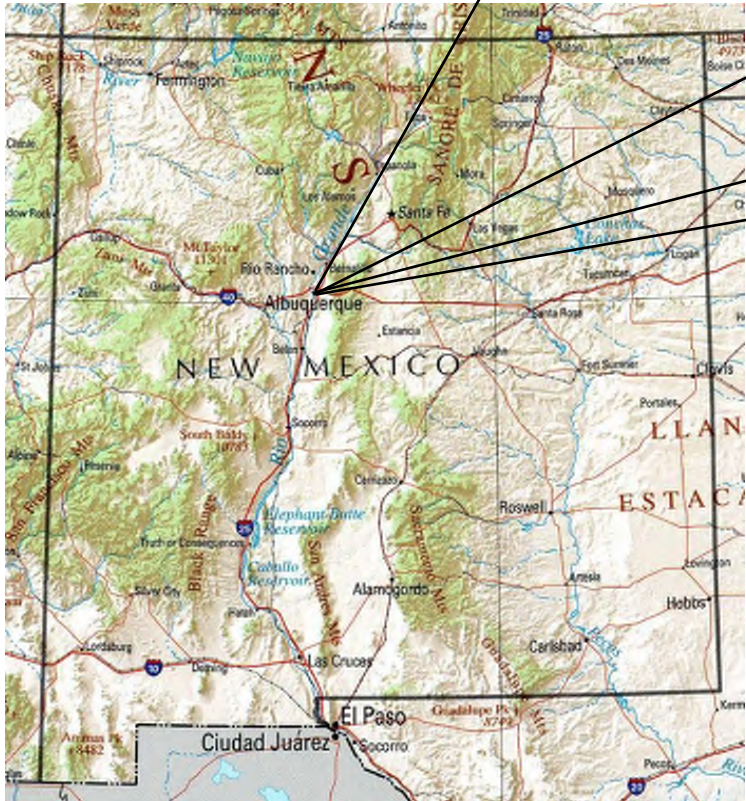
# BROOKLINE SUBDIVISION HOMES

## TEMPORARY SEDIMENT AND EROSION CONTROL DRAWINGS

### ALBUQUERQUE, BERNALILLO COUNTY, NM

#### DRAWING INDEX

- 1 COVER SHEET
- 2 PROJECT DETAILS
- 3 GENERAL NOTES
- 4 BEST MANAGEMENT PRACTICES
- 5 BEST MANAGEMENT PRACTICES
- 6 BEST MANAGEMENT PRACTICES
- 7 BEST MANAGEMENT PRACTICES
- 8 TEMPORARY EROSION & SEDIMENT CONTROL PLAN
- 9 FINAL STABILIZATION



SWPPP  
Stormwater  
Erosion Control  
Reclamation  
Seeding

www.e2rc.com | 505.867.4040



DATE	REVISION ITEM	#

LITTLE BUBBAS  
CONSTRUCTION, LLC  
BROOKLINE SUBDIVISION  
HOMES  
ALBUQUERQUE, NM

DESIGNED BY:  
K. FETTER, P.E.  
DRAWN BY:  
C. FETTER PINNEY

SHEET:  
COVER

PROJECT DETAILS

NPDES ID: NMR10040J, NMR100406

ADDRESS: BROOKLINE DRIVE NW, ALBUQUERQUE, NM 87114

GPS COORDINATES: 35.213247, -106.711794

TOTAL ACREAGE: 1.25

ANITCIPATED DISTURBED ACREAGE: 1.25

FIRST RECEIVING WATERS: ARROYO DE LAS CALABACILLAS

WATERS WITHIN ONE MILE OF PROJECT: ARROYO DE LAS CALABACILLAS, UNNAMED ARROYO, UNNAMED ARROYO

IMPAIRED/TIERED WATERS: NONE

ENDANGERED SPECIES: CRITERION A

SUPPORT ACTIVITIES: SEE SECTION 3.6 OF SWPPP NARRATIVE

SOIL TYPE: SEE NRCS SOIL REPORT PROVIDED IN SWPPP BINDER

TYPE PRE-CONSTRUCTION COVER: <15 % VEGETATIVE COVER, ASPHALT PAVEMENT

STABILIZATION MEASURES AND DEADLINES: SEE SECTION 6.0 OF SWPPP NARRATIVE

REGULATING AUTHORITY: ENVIRONMENTAL PROTECTION AGENCY (EPA)

REGULATING PERMIT: 2017 CONSTRUCTION GENERAL PERMIT

OPERATORS

PROPERTY OWNER:  
JOHN DEBASSIGE  
10819 ROCKY MOUNTAIN DR. NW

ALBUQUERQUE, NM 87114

OWNER CONTACT:  
JOHN DEBASSIGE  
(505) 710-3775  
JRDEBASSIGE@YAHOO.COM

GENERAL CONTRACTOR (GC):  
LITTLE BUBBAS CONSTRUCTION, LLC  
3404 STANFORD DR. NE  
ALBUQUERQUE, NM 87107

GC CONTACT:  
BEN MEDINA  
(505) 610-1339  
BENMEDINA.LBC@GMAIL.COM

STORMWATER TEAM

SEE SECTION 2.0 OF THE SWPPP NARRATIVE FOR THE PROJECT'S STORMWATER TEAM, RESPONSIBILTIES AND CONTACT INFORMATION

SEQUENCE OF ACTIVITIES

REFER TO THE ANTICIPATED CONSTRUCTION SCHEDULE INCLUDED WITH THE SWPPP BINDER.

PHASE I: SITE PREPARATION AND PRE – CONSTRUCTION

- 1.PRIOR TO BEGINNING EARTH DISTURBING ACTIVITIES, THE OPERATOR(S) WILL CLEARLY DEMARCATATE THE LIMITS OF DISTURBANCE WITH STAKES, RIBBONS, CONSTRUCTION FENCING, OR OTHER APPROPRIATE METHOD. THESE DEMARCATIONS SHALL REMAIN VISIBLE FOR THE DURATION OF THE PROJECT.
- 2.THE INITIAL EROSION CONTROL MEASURES SHALL BE INSTALLED PRIOR TO EARTH DISTURBANCE. THE INITIAL CONTROL MEASURES MAY INCLUDE BUT ARE NOT LIMITED TO:
- a.PERIMETER CONTROLS (E.G., SILT FENCE, WATTLES, CONSTRUCTION FENCE)
  - b.VEHICLE TRACKING PAD IF THE SITE ENTERS/EXITS ONTO A PAVED PUBLIC ROADWAY
  - c.NPDES NOTIFICATION POSTING
  - d.DESIGNATED STAGING AREA
  - e.ANCHORED SANILETS
  - f.DUMPSTERS

PHASE II: CONSTRUCTION ACTIVITIES

- 1.THE OPERATORS WILL MINIMIZE THE AREA DISTURBED AS MUCH AS FEASIBLY POSSIBLE.
- 2.ANY DISTURBED AREA IN WHICH CONSTRUCTION ACTIVITIES HAVE TEMPORARILY CEASED SHALL TEMPORARILY STABILIZED USING THE METHODS DESCRIBED IN SECTION 6.4 OF THE SWPPP NARRATIVE. SECTION 6.3 OF THE SWPPP NARRATIVE PROVIDES THE TEMPORARY STABILIZATION DEADLINES.
- 3.THE LOCATION OF SOME BMPS MAY REQUIRE ALTERATION IF DRAINAGE PATTERNS CHANGE DURING CONSTRUCTION. THE OPERATORS SHALL INSTALL ADDITIONAL BMPS OR UPGRADE BMPS IF NECESSARY.
- 4.IF CONCRETE IS USED ONSITE AND CONCRETE TRUCKS ARE UNABLE TO WASHOUT OFFSITE, THE OPERATORS WILL PROVIDE ONE OR MORE DESIGNATED CONCRETE WASHOUT AREAS. THE CONCRETE WASHOUTS MUST BE INSTALLED PRIOR TO CONCRETE USE ONSITE AND REMOVED ONLY AFTER CONCRETE WORK IS COMPLETE.

PHASE III: FINAL STABILIZATION AND CONSTRUCTION COMPLETION

- 1.IF APPLICABLE, REVEGETATION OR LANDSCAPING SHALL BE INITIATED IMMEDIATELY UPON KNOWING WORK IN A DISTURBED AREA HAS PERMANENTLY STOPPED AND THE AREA IS NOT COVERED BY PERMANENT STRUCTURES, UNLESS INFEASIBLE. SECTION 6.5 OF THE SWPPP NARRATIVE DISCUSSES PERMANENT STABILIZATION AND ASSOCIATED DEADLINES.
- 2.THE OPERATORS SHALL REMOVE TEMPORARY BMPS ONLY AFTER FINAL STABILIZATION IS COMPLETE.



					DATE
					REVISION ITEM
					#

GAMMA DEVELOPMENT, LLC  
ASCENSION SUBDIVISION  
SWPPP NOTES

DESIGNED BY:  
K. FETTER, P.E.  
DRAWN BY:  
S. FETTER

SHEET:  
GENERAL  
NOTES



GENERAL NOTES

THE NPDES COMPLIANCE SWPPP DRAIING AND ASSOCITAED DOCUMENTATION IS AND SHALL BE CONSIDERED A LIVING DOCUMENT ALLOWING FOR MODIFICATIONS AS SITE CONDITIONS CHANGE OR DICTATE.

ALL SITE FEATURES (EXISTING/PROPOSED GRADES, EXISTING CONSTRUCTION, FUTURE CONSTRUCTION, ETC.) SHOWN IS PER INFORMATION FROM OTHERS.

MINIMUM REQUIREMENTS TO FURTHER DEVELOP OR MODIFY THIS STORMWATER POLLUTION PREVENTION PLAN (SWPPP) DRAWING SHALL BE BASED ON THE CURRENT EDITION OF THE NEW MEXICO STATE HIGHWAY AND TRANSPORTATION DEPARTMENT (NMSHTD), NPDES LAW AND CITY OF ALBUQUERQUE ORDINANCE § 14-5-2-11.

ALL OPERATORS SHALL SUBMIT A NOTICE OF INTENT (NOI). THE NOI SHALL BE ACTIVE AND POSTED ON THE EPA'S WEBSITE PRIOR TO COMMENCING EARTH DISTURBING ACTIVITIES.

LOCATE TEMPORARY WASHOUT, ANCHORED TOILETS, CONSTRUCTION ENTRANCE AND PARKING, STAGING, REFUELING, TRASH CONTAINMENT AREA TO MINIMIZE SITE DISTURBANCE DURING CONSTRUCTION ACTIVITY.

THE OPERATOR IS REQUIRED TO REGULARLY PERFORM STREET SWEEPING AND CLEAN - UP MEASURES IN THE EVENT OF SEDIMENT TRACK - OUT.

THE FOLLOWING ARE STANDARD EROSION CONTROL REQUIREMENTS PER THE CITY OF ALBUQUERQUE STORMWATER QUALITY DEPARTMENT (MARCH 24, 2021):

ALL EROSION AND SEDIMENT CONTROL (ESC) WORK ON THESE PLANS, EXCEPT AS OTHERWISE STATED OR PROVIDED HEREON SHALL BE PERMITTED, CONSTRUCTED, INSPECTED, AND MAINTAINED IN ACCORDANCE WITH:

THE CITY ORDINANCE § 14-5-2-11, THE ESC ORDINANCE;  
THE EPA'S 2017 CONSTRUCTION GENERAL PERMIT (CGP); AND  
THE CITY OF ALBUQUERUQ CONSTRUCTION BMP MANUAL

ALL TEMPORARY SEDIMENT AND EROSION CONTROL MEASURES MUST BE INSTALLED PRIOR TO BEGINNING ANY EARTH MOVING ACTIVITIES EXCEPT AS SPECIFIED HEREON IN THE PHASING PLAN. CONSTRUCTION OF EARTHEN BMPS SUCH AS SEDIMENT TRAPS, SEDIMENT BASINS, AND DIVERSION BERMS SHALL BE COMPLETED AND INSPECTED PRIOR TO ANY OTHER CONSTRUCTION OR EARTHWORK. SELF-INSPECTION IS REQUIRED AFTER INSTALLATION OF THE BMPS AND PRIOR TO BEGINNING CONSTRUCTION.

SEE SECTION 3.5 OF THE SWPPP NARRATIVE OR THE CONTRACTOR'S SCHEDULE (TAB II OF SWPPP BINDER) FOR BMP SCHEDULING OR PHASING.

SELF-INSPECTIONS - AT A MINIMUM A ROUTINE COMPLIANCE SELF-INSPECTION IS REQUIRED TO REVIEW THE PROJECT FOR COMPLIANCE WITH THE CONSTRUCTION GENERAL PERMIT ONCE EVERY 14 DAYS AND AFTER ANY PRECIPITATION EVENT OF 1/4 INCH OR GREATER UNTIL THE SITE CONSTRUCTION HAS BEEN COMPLETED AND THE SITE DETERMINED AS STABILIZED BY THE CITY. REPORTS OF THESE INSPECTIONS SHALL BE KEPT BY THE PERSON OR ENTITY AUTHORIZED TO DIRECT THE CONSTRUCTION ACTIVITIES ON THE SITE AND MADE AVAILABLE UPON REQUEST.

CORRECTIVE ACTION REPORTS MUST BE KEPT BY THE PERSON OR ENTITY AUTHORIZED TO DIRECT THE CONSTRUCTION ACTIVITIES ON THE SITE AND MADE AVAILABLE UPON REQUEST.

STABILIZATION REPORTS MUST BE KEPT BY THE PERSON OR ENTITY AUTHORIZED TO DIRECT THE CONSTRUCTION ACTIVITIES ON THE SITE AND MADE AVAILABLE UPON REQUEST. REPORTS SHOULD INCLUDE RECORDS OF WEED REMOVAL PER CITY ORDINANCE (§ 9-8-1), STERILIZATION, SOIL TEST RESULTS AND RECOMMENDATION, MATERIALS AND MANUFACTURER'S SPECIFICATIONS FOR APPLICATION RATES, ESTIMATED FUNCTIONAL LONGEVITY, METHODS OF APPLICATION, INSPECTION AND MAINTENANCE. THE REDUCED SELF-INSPECTION SCHEDULE IN CGP 4.4.1 APPLIES TO STABILIZED AREA AND ANY DAMAGED OR WORN STABILIZATION MUST BE IDENTIFIED IN THE REPORTS ALONG WITH WEED PROBLEMS. CORRECTIVE ACTIONS FOR STABILIZATION SHALL BE DOCUMENTED IN A STABILIZATION REPORT INCLUDING ACTUAL RATES AND DATES OF STABILIZATION, AND THE MATERIALS AND MANUFACTURER'S SPECIFICATIONS USED.

BMPS SHALL BE INSPECTED AND MAINTAINED UNTIL ALL DISTURBED AREAS ARE STABILIZED IN ACCORDANCE WITH THE FINAL STABILIZATION CRITERIA (CGP 2.2.14.B). GENERALLY, ALL DISTURBED AREAS, OTHER THAN STRUCTURES AND IMPERVIOUS SURFACES, MUST HAVE UNIFORM PERENNIAL VEGETATION THAT PROVIDES 70 PERCENT OR MORE OF THE COVER PROVIDED BY NATIVE VEGETATION OR SEED THE DISTURBED AREA AND PROVIDE NON-VEGETATIVE MULCH THAT PROVIDES COVER FOR AT LEAST THREE YEARS WITHOUT ACTIVE MAINTENANCE. FINAL STABILIZATION MUST BE APPROVED BY THE CITY OF ALBUQUERQUE PRIOR TO REMOVAL OF BMPS AND DISCONTINUATION OF INSPECTIONS.



					DATE
					REVISION ITEM
					#

GAMMA DEVELOPMENT, LLC  
ASCENSION SUBDIVISION  
SWPPP NOTES

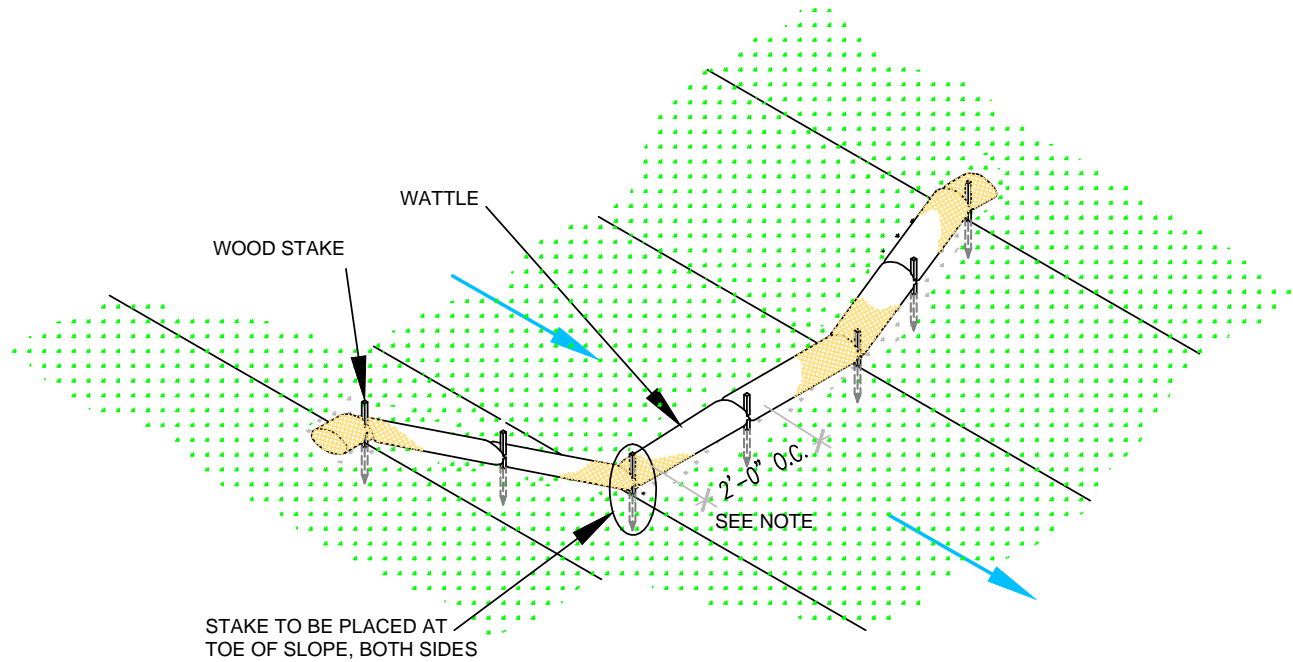




SWPPP  
Stormwater  
Erosion Control  
Reclamation  
Seeding

DESIGNED BY:  
K. FETTER, P.E.  
DRAWN BY:  
S. FETTER

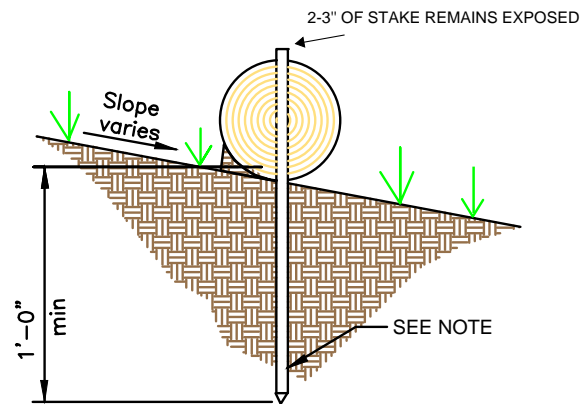
SHEET:  
GENERAL  
NOTES



**WATTLE  
WITHOUT BLANKET**

NTS

2' FOR DRAWING ONLY. 8' MAX  
SPACING BETWEEN STAKES



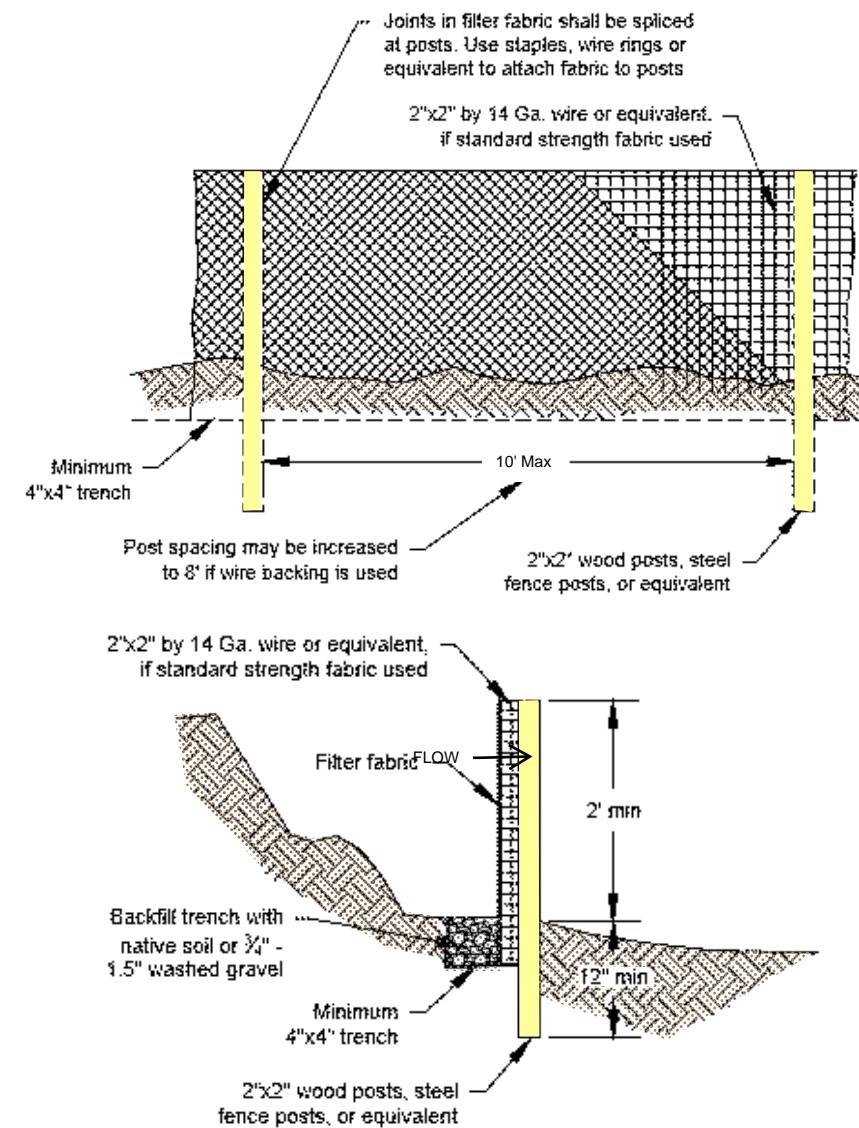
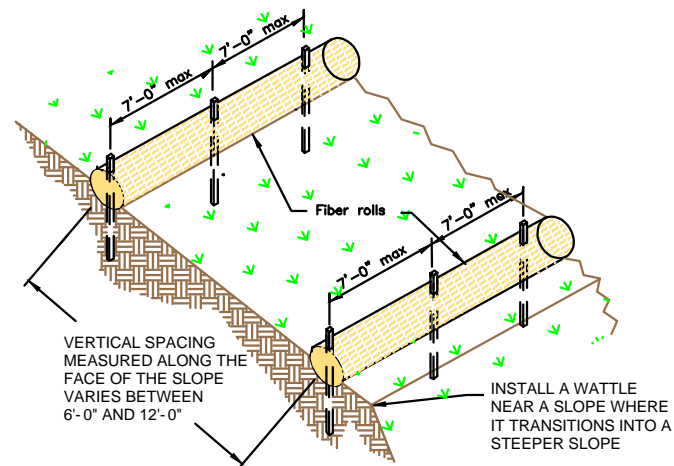
**WATTLE**

NTS

SECURE WATTLE WITH 18-24" STAKES EVERY 3-4' AND STAKES ON EACH END OF THE WATTLE.

DRIVE STAKES PERPENDICULAR TO THE SLOPE FACE AND THROUGH THE MIDDLE OF THE WATTLE LEAVING AT LEAST 2-3" OF THE STAKE ABOVE THE WATTLE.

VERTICAL SPACING DEPENDENT ON SLOPE GRADIENT.



**SILT FENCE**

NTS

SILT FENCE IS TO BE PLACED PERPENDICULAR TO THE SLOPE OF THE SITE.

DIG A 4"X4" MINIMUM TRENCH UPSTREAM OF THE SILT FENCE. DRIVE STAKES AT LEAST 1' DEEP ON THE DOWNSTREAM EDGE.

RUN THE SILT FENCE ON THE INSIDE OF THE STAKES AND SECURE WITH HOG RINGS, WIRE, ZIP TIES OR STAPLES.

IF ONE CONTINUOUS PIECE OF FABRIC IS NOT AVAILABLE, OVERLAP THE FABRIC AT LEAST THE WIDTH OF THE STAKE AND SECURE WITH HOG RINGS, WIRE, ZIP TIES OR STAPLES.

COVER TRENCH WITH BACKFILLED COMPACTED SOIL, GRAVEL OR ROCK.



				DATE
				REVISION ITEM
				#

BROOKLINE SUBDIVISION  
HOMES  
BMP DETAILS

DESIGNED BY:  
K. FETTER, P.E.  
DRAWN BY:  
C. FETTER PINNEY

SHEET:

4



SWPPP  
Stormwater  
Erosion Control  
Reclamation  
Seeding

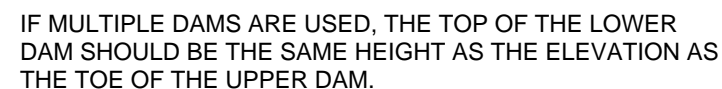
www.e2rc.com | 505.867.4040



ONCE/IF THE SPOILS STOCKPILE IS DEPLETED OR MOVED,  
REMOVE THE WATTLES AND REUSE THEM IN THE NEXT  
LOCATION.



ONCE THE TRANCH IS BACKFILLED, WATTLES MAY BE REMOVED AND REUSED IN THE NEXT SECTION OF EXCAVATION PROVIDED THEY ARE IN GOOD CONDITION.



2-3" OF THE WOODEN STAKE SHOULD BE PRESENT ABOVE THE WATTLE.



USE EQUIPMENT TO COMPACT EARTHEN BERM BY ROLLING OVER BERM TO MINIMIZE SPREAD.



SWPPP  
Stormwater  
Erosion Control  
Reclamation  
Seeding

www.e2rc.com | 505.867.4040



# BROOKLINE SUBDIVISION HOMES BMP DETAILS

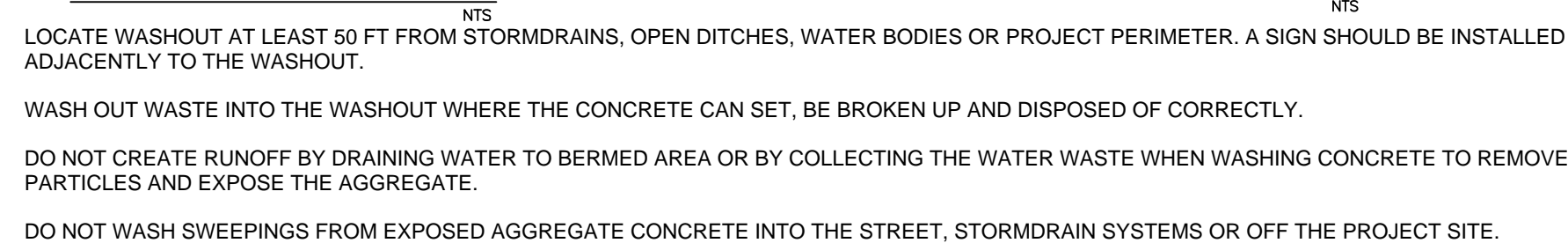
DESIGNED BY:  
K. FETTER, P.E.  
DRAWN BY:  
C. FETTER PINNEY

SHEET:

# 5







CONSTRUCT THE ENTRANCE ON A LEVEL SURFACE WHERE AN UNPAVED ROAD MEETS A PAVED ROAD. TYPICALLY AT PROJECTS ACCESS AREA.

GRADE THE ENTRANCE TOWARD THE CONSTRUCTION SITE  
TO PREVENT RUNOFF.

INSPECT THE ENTRANCE TO KEEP TRASH AND DEBRIS OUT OF THE WAY.

AFTER PRECIPITATION EVENTS, INSPECT THE ENTRANCE FOR ANY REPAIRS THAT MAY BE NEEDED.

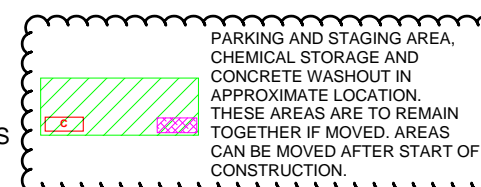
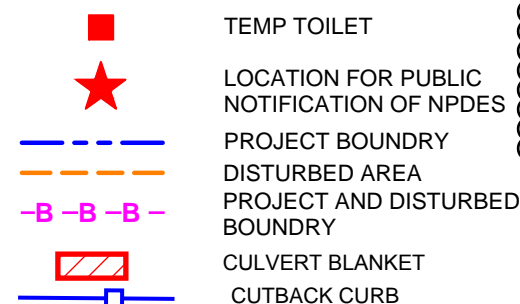
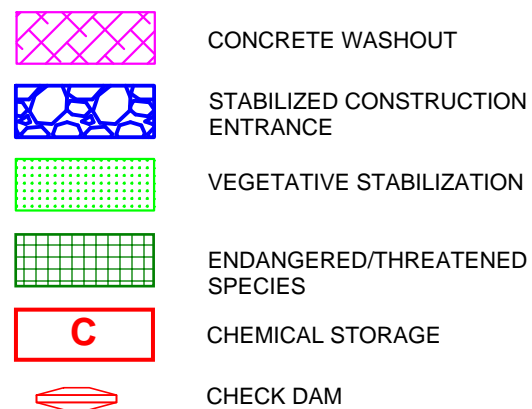
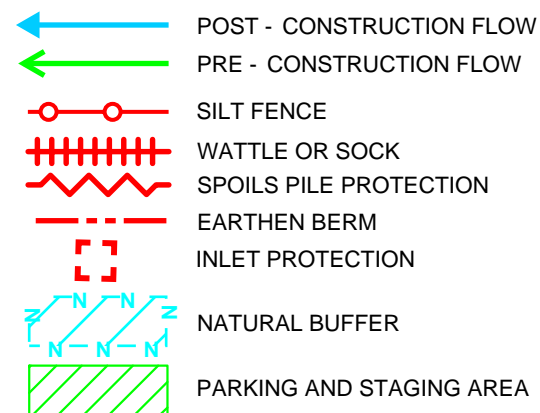


- SWPPP
- Stormwater
- Erosion Control
- Reclamation
- Seeding

DESIGNED BY:  
K. FETTER, P.E.  
DRAWN BY:  
C. FETTER PINNEY

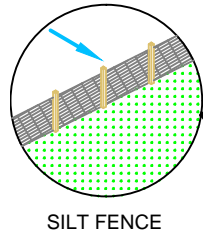
SHEET:

www.e2rc.com | 505.867.4040

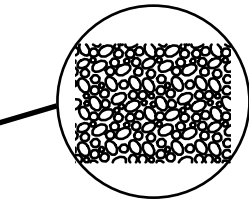
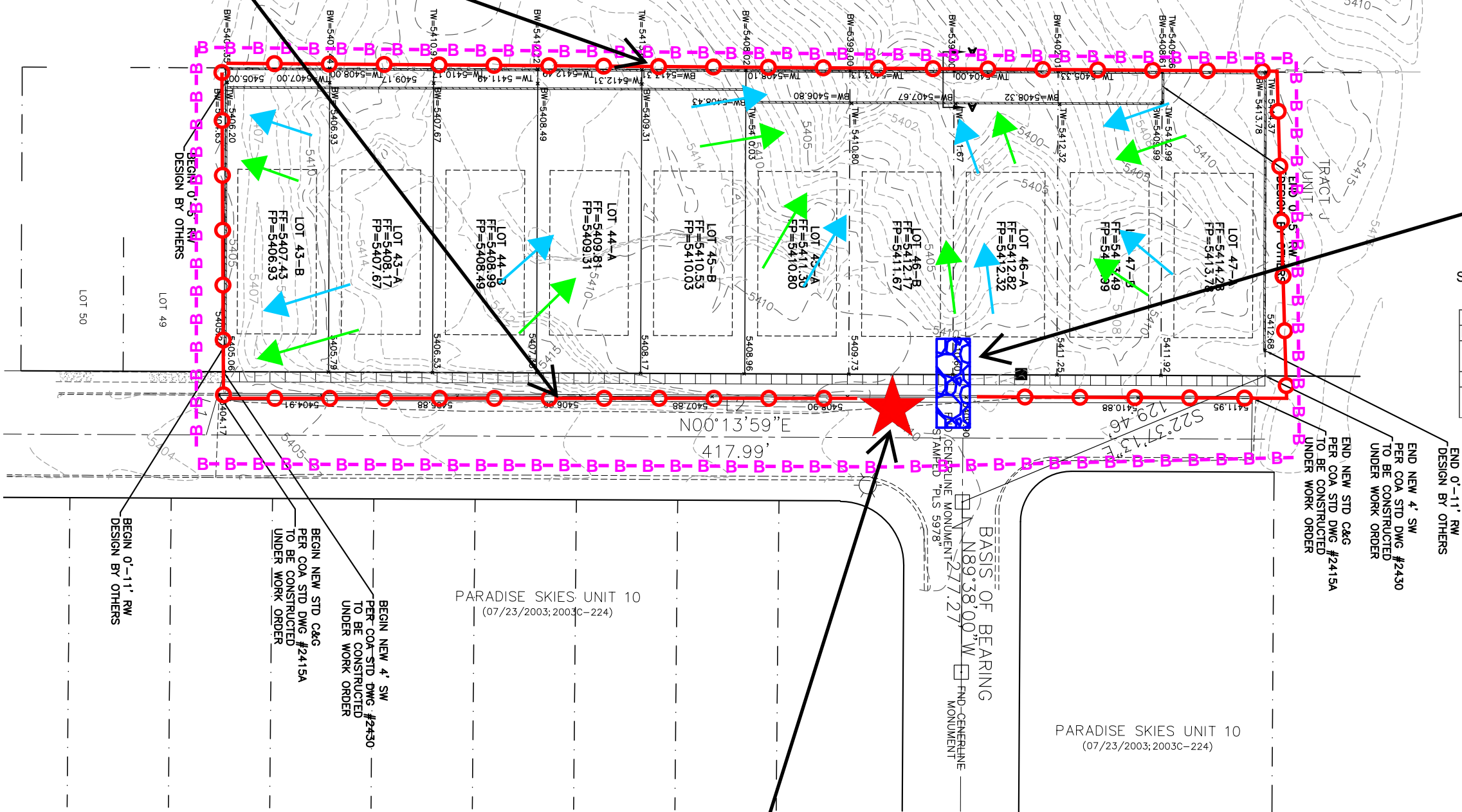


## DRAWING KEY

IMPLEMENTATION	
BMP INSTALL	BMP REMOVE
5/27/21	
FINAL STABILIZATION	

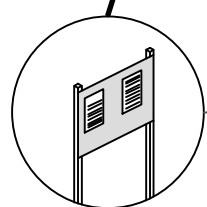


TRACT B. BULK LAND PLAT OF  
TRACTS A THRU D  
LANDS OF PARADISE HEIGHTS, LLC  
(06/24/2003; 2003C-189)



IMPLEMENTATION	
BMP INSTALL	BMP REMOVE
5/27/21	
FINAL STABILIZATION	

IMPLEMENTATION	
BMP INSTALL	BMP REMOVE
5/27/21	
FINAL STABILIZATION	



SWPPP  
Stormwater  
Erosion Control  
Reclamation  
Seeding

www.e2rc.com | 505.867.4040



DATE	REVISION ITEM	#

BROOKLINE SUBDIVISION  
HOMES  
TESCP

DESIGNED BY:  
K. FETTER, P.E.  
DRAWN BY:  
C. FETTER PINNEY

SHEET:  
8



FINAL STABILIZATION

CONCRETE CURB AND GUTTERS

LANDSCAPING - SEE LANDSCAPING PLANS FOR DETAILS

FINAL STABILIZATION

VERTICAL STRUCTURES

FINAL STABILIZATION

PROPOSED SIDEWALK

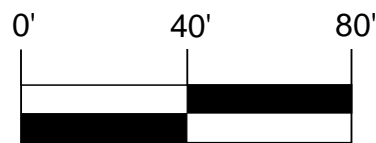
FINAL STABILIZATION

END NEW 4' SW  
PER COA STD DWG #2430  
TO BE CONSTRUCTED  
UNDER WORK ORDER

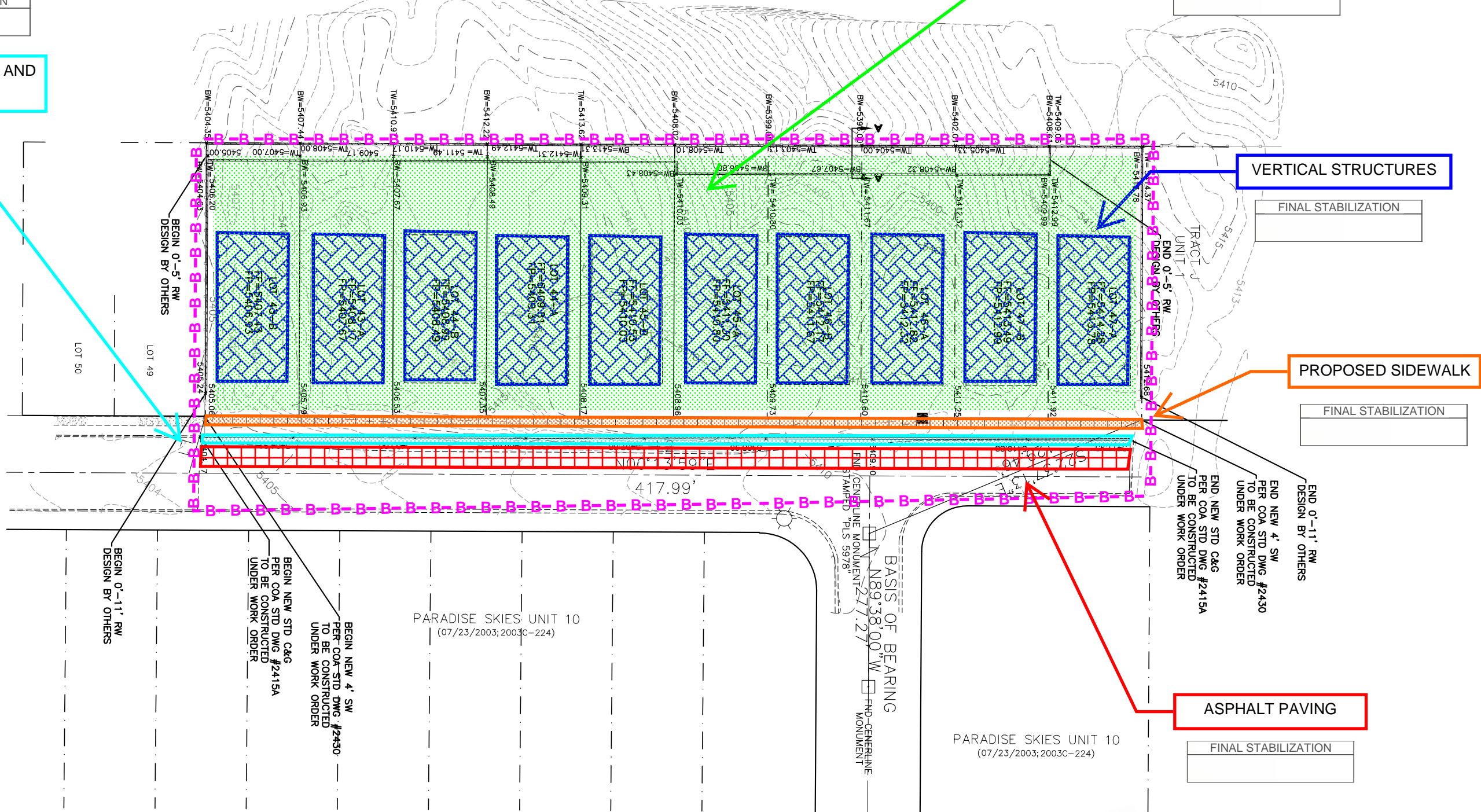
END NEW STD C&G  
PER COA STD DWG #2415A  
TO BE CONSTRUCTED  
UNDER WORK ORDER

ASPHALT PAVING

FINAL STABILIZATION



TRACT B BULK LAND PLAT OF  
TRACTS A THRU D  
LANDS OF PARADISE HEIGHTS, LLC  
(06/24/2003; 2003C-189)



PARADISE SKIES UNIT 10  
(07/23/2003; 2003C-224)

PARADISE SKIES UNIT 10  
(07/23/2003; 2003C-224)



SWPPP  
Stormwater  
Erosion Control  
Reclamation  
Seeding

www.e2rc.com | 505.867.4040



DATE	REVISION ITEM	#

BROOKLINE SUBDIVISION  
HOMES  
FINAL STABILIZATION

DESIGNED BY:  
K. FETTER, P.E.  
DRAWN BY:  
C. FETTER PINNEY

SHEET:  
9