

CITY OF ALBUQUERQUE



December 17, 2005

Mr. Steve Salazar, PE
WILSON & COMPANY
2600 American Road
Suite 100
Rio Rancho, NM 87124

RE: SEVILL SUBDIVISION, UNIT 3A (A-10/D2B)
Engineers Certification for Release of Financial Guaranty
Engineers Stamp dated 12/16/2004
Engineers Certification dated 12/15/2005

Dear Steve:

P.O. Box 1293
Based upon the information provided in your Engineer's Certification Submittal dated 12/16/2005, the above referenced plan is adequate to satisfy the Grading and Drainage Certification for Release of Financial Guaranty.

Albuquerque
If you have any questions, you can contact me at 924-3982.

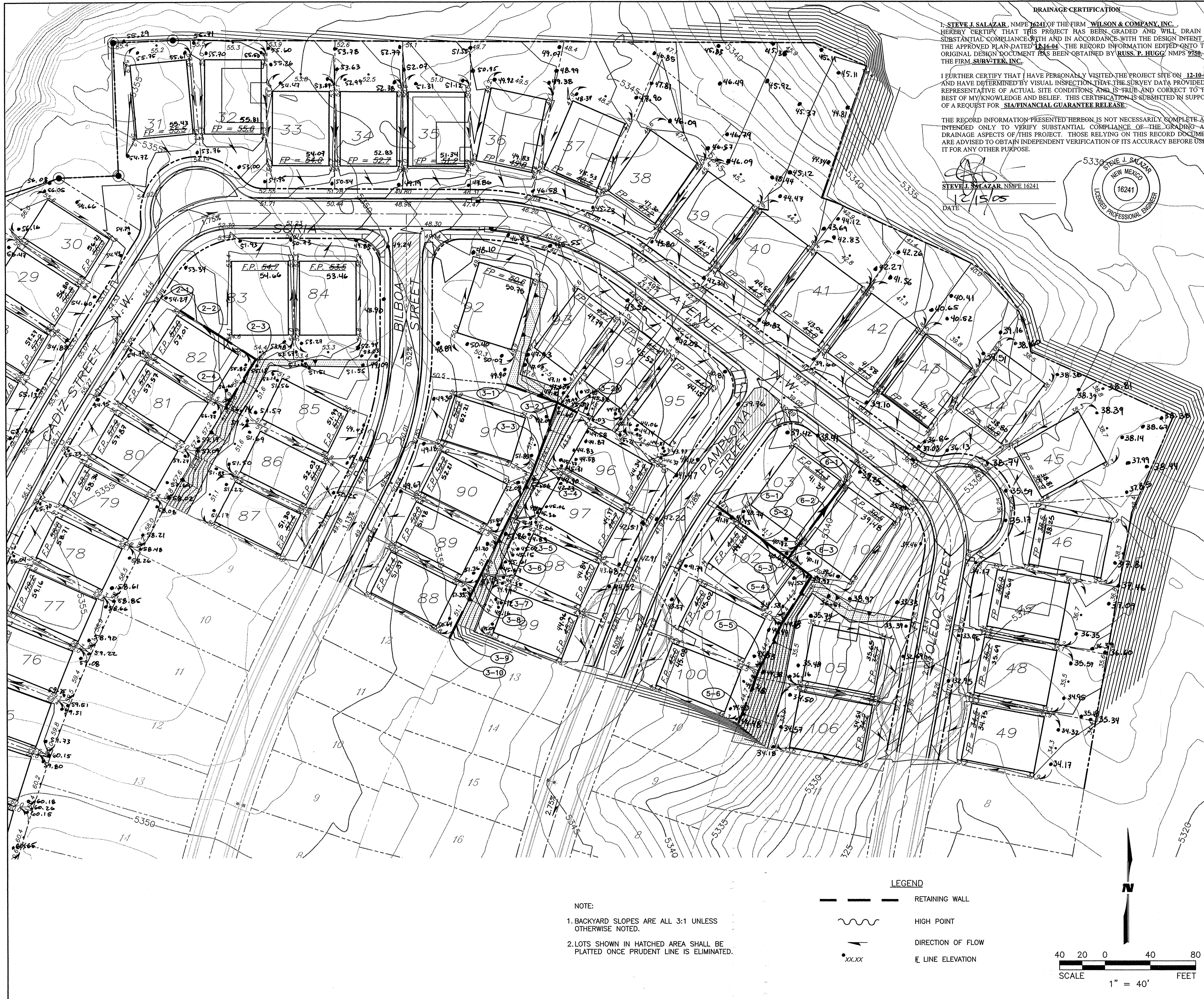
New Mexico 87103

www.cabq.gov

Sincerely,

Arlene V. Portillo
Plan Checker, Planning Dept.- Hydrology
Development and Building Services

C: Marilyn Maldonado, COA# 702082
File



DRAINAGE CERTIFICATION

I, STEVE J. SALAZAR, NMPE 16241 OF THE FIRM WILSON & COMPANY, INC. HEREBY CERTIFY THAT THIS PROJECT HAS BEEN GRADED AND WILL DRAIN IN SUBSTANTIAL COMPLIANCE WITH AND IN ACCORDANCE WITH THE DESIGN INTENT OF THE APPROVED PLAN DATED 12-16-04. THE RECORD INFORMATION EDITED ONTO THE ORIGINAL DESIGN DOCUMENT HAS BEEN OBTAINED BY RUSS, P. HUGG, NMPS 2750 OF THE FIRM SURV-TEK, INC.

I FURTHER CERTIFY THAT I HAVE PERSONALLY VISITED THE PROJECT SITE ON 12-10-05 AND HAVE DETERMINED BY VISUAL INSPECTION THAT THE SURVEY DATA PROVIDED IS REPRESENTATIVE OF ACTUAL SITE CONDITIONS AND IS TRUE AND CORRECT TO THE BEST OF MY KNOWLEDGE AND BELIEF. THIS CERTIFICATION IS SUBMITTED IN SUPPORT OF A REQUEST FOR SIA/FINANCIAL GUARANTEE RELEASE.

THE RECORD INFORMATION PRESENTED HEREON IS NOT NECESSARILY COMPLETE AND INTENDED ONLY TO VERIFY SUBSTANTIAL COMPLIANCE OF THE GRADING AND DRAINAGE ASPECTS OF THIS PROJECT. THOSE RELYING ON THIS RECORD DOCUMENT ARE ADVISED TO OBTAIN INDEPENDENT VERIFICATION OF ITS ACCURACY BEFORE USING IT FOR ANY OTHER PURPOSE.

STEVE J. SALAZAR, NMPE 16241
DATE 12/15/05



RETAINING WALL TABLE

WALL POINT	TOP OF WALL ELEV	TOP OF FOOTING ELEV	WALL HEIGHT (FT)	APPROX. WALL LENGTH (FT)
2-1	55.67	53.00		
2-2	55.67/56.33	53.00	2.67	43.00
2-3	56.33/57.00	53.00/53.67	3.33	21.00
2-4	57.00	55.00	3.33-2.00	20.00
3-1	51.67	50.33		
3-2	51.67	50.33	1.33	43.00
3-2A	47.00	50.33/43.00	1.33-5.33	33.00
3-3	51.67/52.33	50.33/47.00	1.33-6.00	15.00
3-4	52.33	47.00/46.33	6.00	44.00
3-5	52.33	46.33/47.00	5.33	20.00
3-6	52.33	47.00	5.33	36.00
3-7	52.33	47.00/48.33	4.00	15.00
3-8	52.33	48.33	4.00	36.00
3-9	52.33	48.33/49.67	4.00-1.33	15.00
3-10	52.33	49.67		

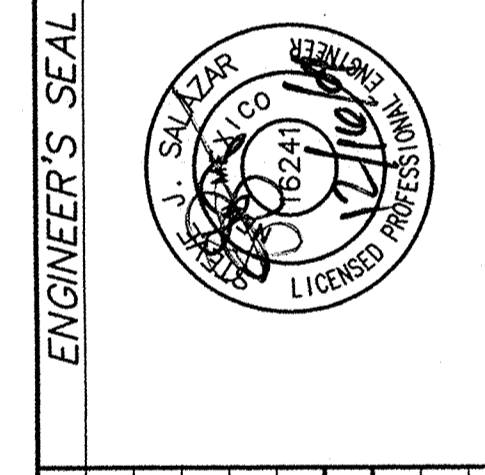
5-1	42.67	39.33		
5-2	42.67/43.33	39.33	3.33	50.00
5-3	43.33/44.00	39.33/38.00	4.00	28.00
5-4	44.00	38.00	6.00	72.00
5-5	44.00	41.33	6.00-2.67	48.00
5-6	44.00	42.67	2.67-1.33	50.00
6-1	40.00	37.33		
6-2	40.00/40.67	37.33/38.00	2.67	31.00
6-3	40.67	38.00	2.67	54.00

AS-BUILT INFORMATION

CONTRACTOR: A.C.S. Survey Monument "SANDBERY"
 WORK STAMPED BY: New Mexico State Plane Coord's, Central Zone (NAD 27) as published:
 DATE: 12/15/05
 FIELD ELEVATION BY: SURV-TEK, INC.
 DRAWINGS BY: SURV-TEK, INC.
 CHECKED BY: SURV-TEK, INC.
 MICRO-FILM INFORMATION: Elevation = 5456.92 (SLD 1929)
 RECORDED BY: SURV-TEK, INC.
 DATE: 09/29/05
 NO.: 0.99966079

SURVEY INFORMATION

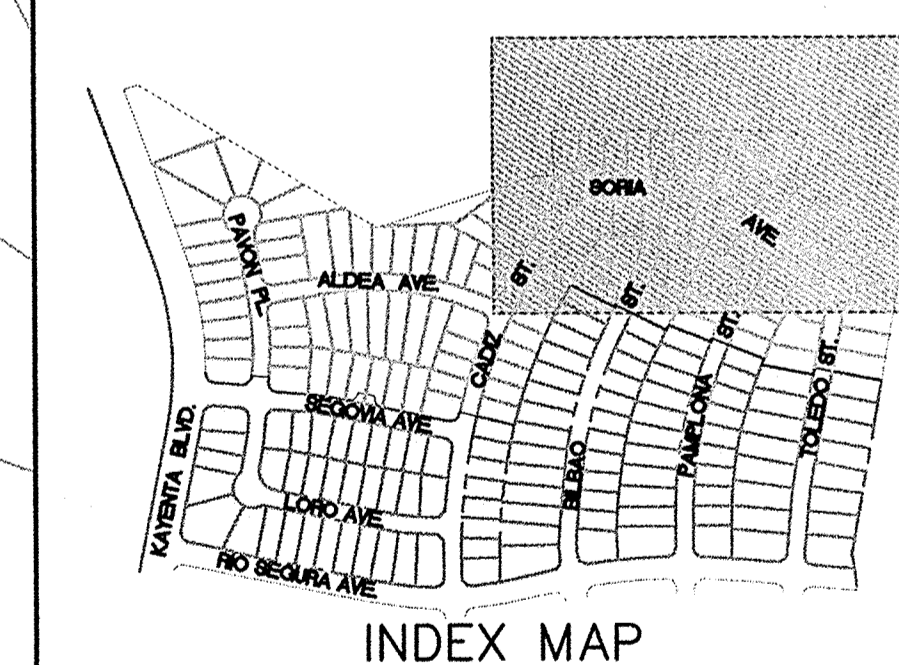
FIELD NOTES BY: T.R. MANN & ASSOC.
 PHOTOGRAMMETRY BY: SURV-TEK, INC.
 DATE: 12/15/05
 FIELD SURVEYS BY: SURV-TEK, INC.
 DATE: 12/15/05



REVISIONS

NO.	DATE	REMARKS	BY

DESIGNED BY: WILSON & COMPANY, ENGINEERS & ARCHITECTS
 DRAWN BY: WILSON & COMPANY, ENGINEERS & ARCHITECTS
 CHECKED BY: WILSON & COMPANY, ENGINEERS & ARCHITECTS
 DATE: SEPT. 04
 DATE: SEPT. 04



WILSON & COMPANY
 2600 THE AMERICAN ROAD S.E.
 SUITE 100
 RIO RANCHO, NEW MEXICO
 87124
 (505) 898-8021

CITY OF ALBUQUERQUE
 PUBLIC WORKS DEPARTMENT
 ENGINEERING GROUP

**SEVILLE SUBDIVISION - UNIT 3A
 GRADING & DRAINAGE PLAN**

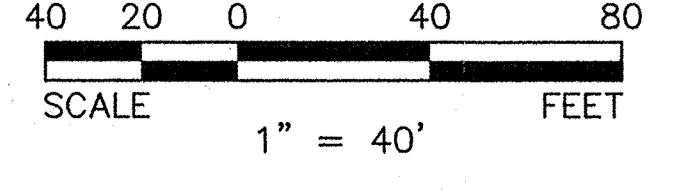
Design Review Committee	City Engineer Approval	Mo./Day/Yr.	Mo./Day/Yr.

City Project No. 702082
 Zone Map No. A-10-Z
 Sheet 9 of 32

NOTE:

- BACKYARD SLOPES ARE ALL 3:1 UNLESS OTHERWISE NOTED.
- LOTS SHOWN IN HATCHED AREA SHALL BE PLATTED ONCE PRUDENT LINE IS ELIMINATED.

- LEGEND**
- RETAINING WALL
 - ~ HIGH POINT
 - DIRECTION OF FLOW
 - xx.xx E LINE ELEVATION





RETAINING WALL TABLE

WALL POINT	TOP OF WALL ELEV	TOP OF FOOTING ELEV	WALL HEIGHT (FT)	APPROX. WALL LENGTH (FT)
1-1	67.67	64.33	3.33	10.00
1-2	67.67	64.33	3.33	54.00
1-3	67.67	64.33	3.33	54.00
2-1	55.67	53.00	2.67	43.00
2-2	55.67/56.33	53.00	3.33	21.00
2-3	56.33/57.00	53.00/53.67	3.33-2.00	20.00
2-4	57.00	55.00		

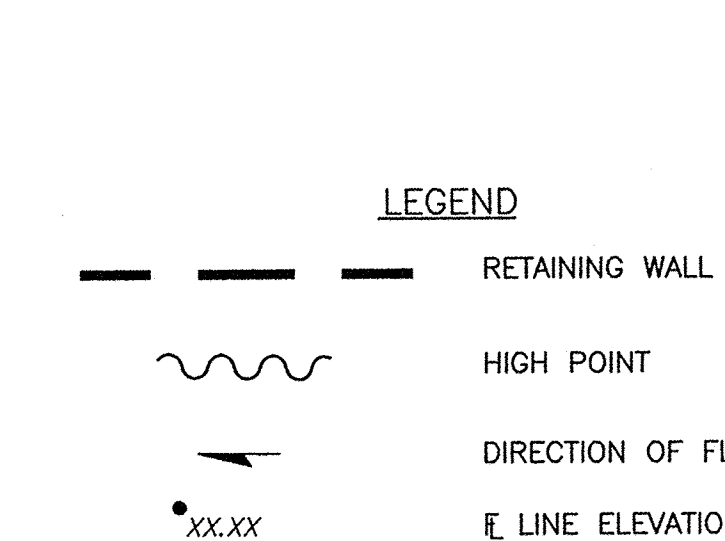
LEGEND

- RETAINING WALL
- HIGH POINT
- DIRECTION OF FLOW
- LINE ELEVATION

NOTE:

- BACKYARD SLOPES ARE ALL 3:1 UNLESS OTHERWISE NOTED.
- LOTS SHOWN IN HATCHED AREA SHALL BE PLATTED ONCE PRUDENT LINE IS ELIMINATED.

SCALE
1" = 40'



DRAINAGE CERTIFICATION

I, STEVE J. SALAZAR, NMPE 16241 OF THE FIRM WILSON & COMPANY, INC. HEREBY CERTIFY THAT THIS PROJECT HAS BEEN GRADED AND WILL DRAIN IN SUBSTANTIAL COMPLIANCE WITH AND IN ACCORDANCE WITH THE DESIGN INTENT OF THE APPROVED PLAN DATED 12-16-04. THE RECORD INFORMATION EDITED ONTO THE ORIGINAL DESIGN DOCUMENT HAS BEEN OBTAINED BY RUSS. P. HUGG, NMPS 9750 OF THE FIRM SURV-TEK, INC.

I FURTHER CERTIFY THAT I HAVE PERSONALLY VISITED THE PROJECT SITE ON 12-10-05 AND HAVE DETERMINED BY VISUAL INSPECTION THAT THE SURVEY DATA PROVIDED IS REPRESENTATIVE OF ACTUAL SITE CONDITIONS AND IS TRUE AND CORRECT TO THE BEST OF MY KNOWLEDGE AND BELIEF. THIS CERTIFICATION IS SUBMITTED IN SUPPORT OF A REQUEST FOR FINANCIAL GUARANTEE RELEASE.

THE RECORD INFORMATION PRESENTED HEREON IS NOT NECESSARILY COMPLETE AND INTENDED ONLY TO VERIFY SUBSTANTIAL COMPLIANCE OF THE GRADING AND DRAINAGE ASPECTS OF THIS PROJECT. THOSE RELYING ON THIS RECORD DOCUMENT ARE ADVISED TO OBTAIN INDEPENDENT VERIFICATION OF ITS ACCURACY BEFORE USING IT FOR ANY OTHER PURPOSE.

STEVE J. SALAZAR, NMPE 16241
DATE: 12/15/05

STEVE J. SALAZAR
NEW MEXICO
16241
LICENSED PROFESSIONAL ENGINEER

WILSON & COMPANY
2600 THE AMERICAN ROAD S.E.
SUITE 100
RIO RANCHO, NEW MEXICO
87124
(505) 898-8021

**CITY OF ALBUQUERQUE
PUBLIC WORKS DEPARTMENT
ENGINEERING GROUP**

**SEVILLE SUBDIVISION - UNIT 3A
GRADING & DRAINAGE PLAN**

NO.	DATE	REMARKS	BY
DESIGNED BY	JUV	WILSON & COMPANY, ENGINEERS & ARCHITECTS	DATE: SEPT. 04
DRAWN BY	JUV	WILSON & COMPANY, ENGINEERS & ARCHITECTS	DATE: SEPT. 04
CHECKED BY	SJS	WILSON & COMPANY, ENGINEERS & ARCHITECTS	DATE: SEPT. 04

Design Review Committee City Engineer Approval

City Project No. 702082 Zone Map No. A-10-Z Sheet 10 of 32

AS-BUILT INFORMATION

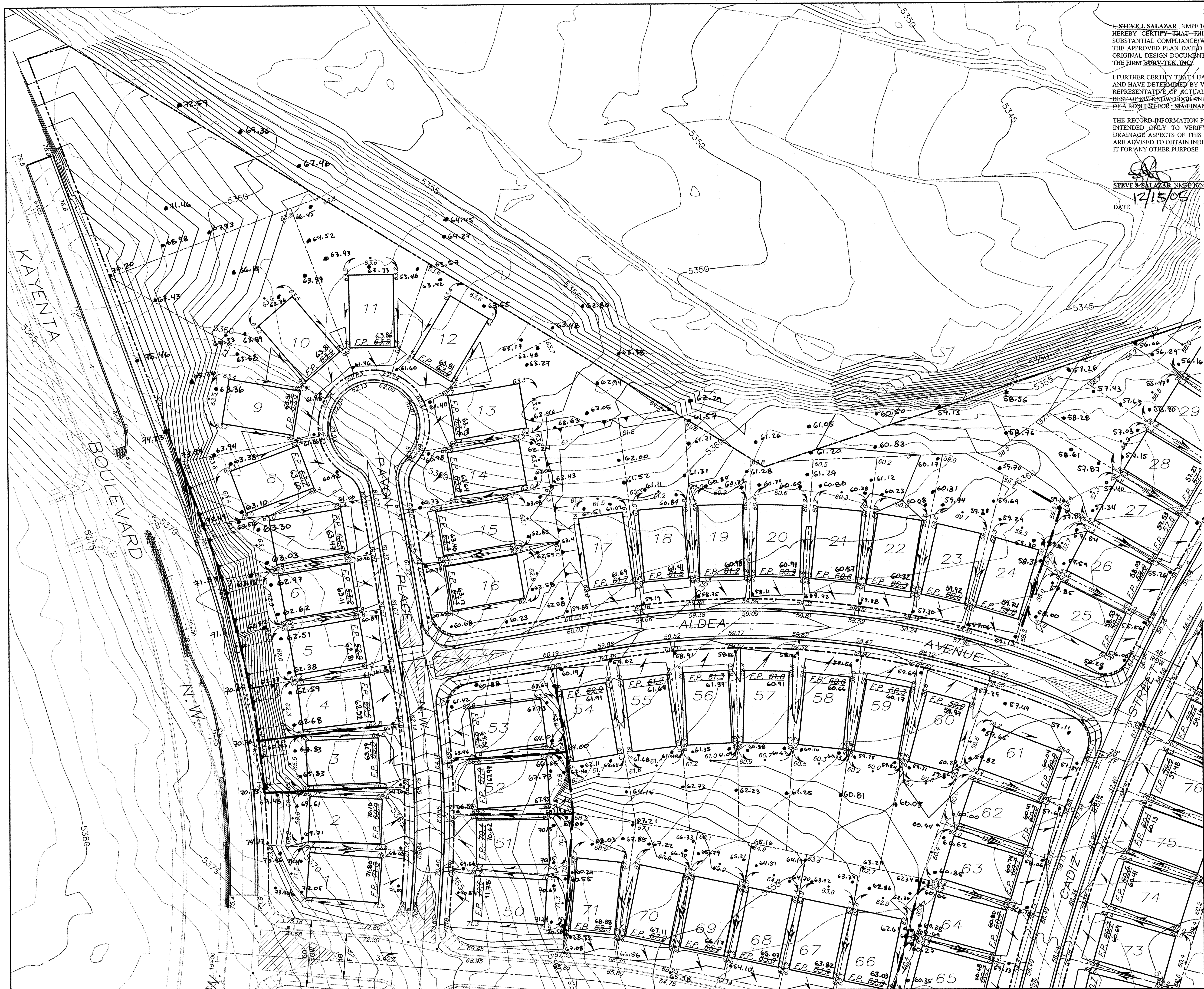
CONTRACTOR: A.C.S. Survey Monument "SANDBERN"
 WORK: New Mexico State Plane Coords, Central Zone (NAD 27) as published:
 INSPECTORS: Y = 1,534,209.29
 ACCEPTANCE BY: X = 361,854.29
 DATE: Elevation = 5456.92 (SLD 1929)
 DRAWINGS: SURV-TEK, INC. Ground to grid factor = 0.99966079
 MICRO-FILM INFORMATION: RECORDED BY: NO.

ENGINEER'S SEAL

REVISIONS

DATE **BY**

12/15/05



STEVE J. SALAZAR, NMPE 16241 OF THE FIRM WILSON & COMPANY, INC. HEREBY CERTIFY THAT THIS PROJECT HAS BEEN GRADED AND WILL DRAIN IN SUBSTANTIAL COMPLIANCE WITH AND IN ACCORDANCE WITH THE DESIGN INTENT OF THE APPROVED PLAN DATED 12-16-04. THE RECORD INFORMATION EDITED ON THE ORIGINAL DESIGN DOCUMENT HAS BEEN OBTAINED BY RUSS, P. HUGG, NMPS 9750, OF THE FIRM SURV-TEK, INC.

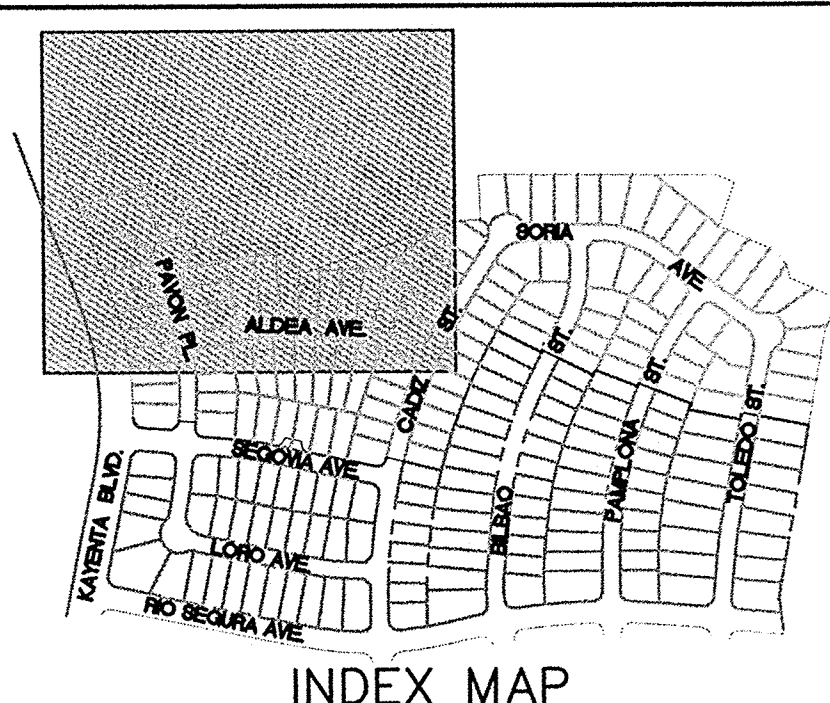
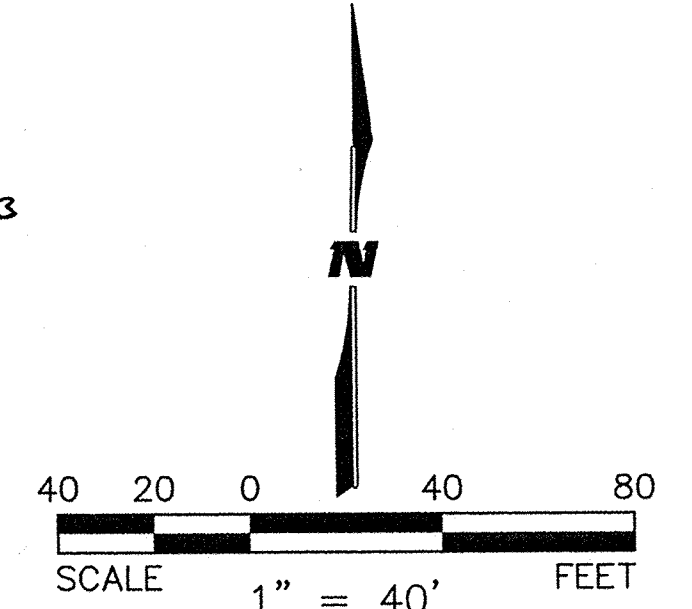
I FURTHER CERTIFY THAT I HAVE PERSONALLY VISITED THE PROJECT SITE ON 12-10-05 AND HAVE DETERMINED BY VISUAL INSPECTION THAT THE SURVEY DATA PROVIDED IS REPRESENTATIVE OF ACTUAL SITE CONDITIONS AND IS TRUE AND CORRECT TO THE BEST OF MY KNOWLEDGE AND BELIEF. THIS CERTIFICATION IS SUBMITTED IN SUPPORT OF A REQUEST FOR A FINANCIAL GUARANTEE RELEASE.

THE RECORD INFORMATION PRESENTED HEREON IS NOT NECESSARILY COMPLETE AND INTENDED ONLY TO VERIFY SUBSTANTIAL COMPLIANCE OF THE GRADING AND DRAINAGE ASPECTS OF THIS PROJECT. THOSE RELYING ON THIS RECORD DOCUMENT ARE ADVISED TO OBTAIN INDEPENDENT VERIFICATION OF ITS ACCURACY BEFORE USING IT FOR ANY OTHER PURPOSE.

STEVE J. SALAZAR
 STEVE J. SALAZAR, NMPE 16241
 DATE 12/15/05



- LEGEND**
- RETAINING WALL
 - ~ HIGH POINT
 - DIRECTION OF FLOW
 - xx.xx E LINE ELEVATION
- NOTE:**
1. BACKYARD SLOPES ARE ALL 3:1 UNLESS OTHERWISE NOTED.
 2. LOTS SHOWN IN HATCHED AREA SHALL BE PLATTED ONCE PRUDENT LINE IS ELIMINATED.



WILSON & COMPANY
 2600 THE AMERICAN ROAD S.E.
 SUITE 100
 RIO RANCHO, NEW MEXICO
 87124
 (505) 898-8021

CITY OF ALBUQUERQUE
 PUBLIC WORKS DEPARTMENT
 ENGINEERING GROUP

**SEVILLE SUBDIVISION - UNIT 3A
 GRADING & DRAINAGE PLAN**

Design Review Committee	City Engineer Approval	Mo./Day/Yr.	Mo./Day/Yr.
City Project No.	Zone Map No.	Sheet	Of
702082	A-10-Z	11	32

AS-BUILT INFORMATION		CONTRACTOR	
DATE	DATE	WORK BY	NO.
DATE	DATE	INSPECTOR'S ACCEPTANCE BY	NO.
DATE	DATE	VERIFICATION BY	NO.
DATE	DATE	RECORDED BY	NO.
BENCH MARKS		ENGINEER'S SEAL	
A.C.S. Survey Monument "SANDBERN"			
New Mexico State Plane Coord's, Central Zone (NAD 27) as published:			
SURVEY INFORMATION		REVISIONS & ARCHITECTS	
FIELD NOTES	DATE	NO.	BY
PHOTOGRAMMETRY BY 3/29/99	PHOTOGRAMMETRY BY 3/29/99		
T.R. MANN & ASSOC.	T.R. MANN & ASSOC.		
FIELD SURVEYS BY SURV-TEK, INC.	FIELD SURVEYS BY SURV-TEK, INC.		
Elevation = 5456.92 (SLD 1929)	Elevation = 5456.92 (SLD 1929)		
Ground to grid factor = 0.99966079	Ground to grid factor = 0.99966079		
REMARKS		DATE	
WILSON & COMPANY, ENGINEERS & ARCHITECTS		DESIGNED BY	
DESIGNED BY		DATE	
DRAWN BY		DATE	
DRAWN BY		DATE	